

# Your Ultimate Source for OEM Repair Manuals

FactoryManuals.net is a great resource for anyone who wants to save money on repairs by doing their own work. The manuals provide detailed instructions and diagrams that make it easy to understand how to fix a vehicle.

## 2024 Jeep Wagoneer L Service and Repair Manual

[Go to manual page](#)

YOUR CURRENT VEHICLE

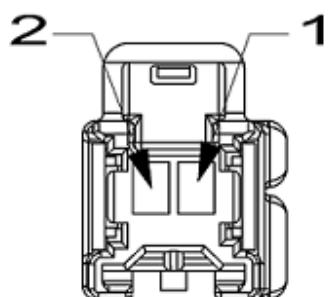
Switch-Seat-Passenger

SWITCH-SEAT-PASSENGER

SWITCH No:D2290A		Option:MEMORY
Connector Details		Harness Family
Color	BLACK	
Part Number	7289-7402-30	SEAT_CUSHION_PASSENGER
Repair Kit Part Number		SEAT_CUSHION_PASSENGER
Part Description		SEAT_CUSHION_PASSENGER
Cavity Count	6	SEAT_CUSHION_PASSENGER
Location View	<a href="#">Location View</a>	SEAT_CUSHION_PASSENGER

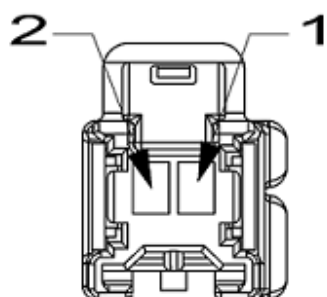
Connector Views
Mating Side:

## Connector Views



Pin	Circuit	Circuit Function	Color	Gauge/Size	Option
SEAT_3RD_ROW					
1	R97	SIGNAL	DB	0.35	
2	R99	DETECTION SIGNAL	DB	0.35	3RD ROW OCCUPANT DETECTION

## Connector Views



Pin	Cicuit	Cicuit Function	Color	Gauge/Size	Option
SEAT_2ND_ROW_LEFT					
1	R71	SIGNAL	BU	0.35	
2	R729	SENSOR RETURN	GN	0.35	EXCEPT 2ND ROW OCCUPANT DETECTION SENSOR
2	R91	DETECTION SIGNAL	GN	0.35	2ND ROW OCCUPANT DETECTION SENSOR

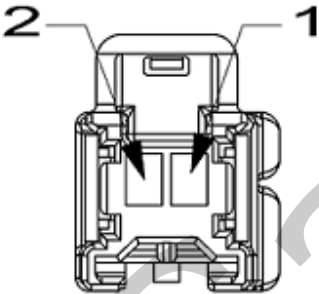
## SWITCH-SEATBELT BUCKLE-REAR LEFT

SWITCH No:D2899A		Option:EXCEPT 3RD ROW
Connector Details		Harness Family
Color	GREEN	
Part Number	7282-6444-60	SEAT_BACK_2ND_ROW

SWITCH No:D2900A		Option:EXCEPT 3RD ROW
Connector Details		Harness Family
Repair Kit Part Number	68087932AA	SEAT_BACK_2ND_ROW
Part Description	KAIZEN YESC SUB ASSEMBLY	SEAT_BACK_2ND_ROW
Cavity Count	2	SEAT_BACK_2ND_ROW
Location View	<a href="#">Location View</a>	SEAT_BACK_2ND_ROW

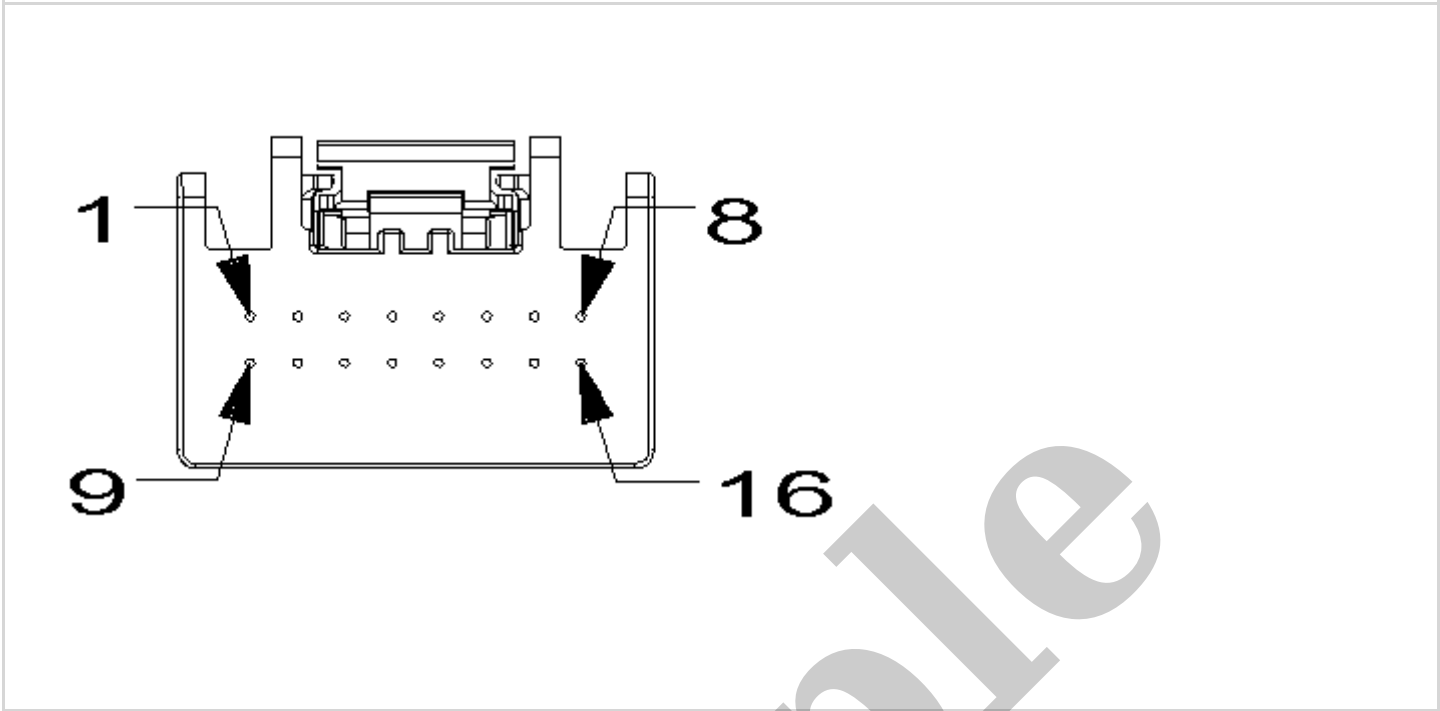
Connector Views

Wire Insertion Side:



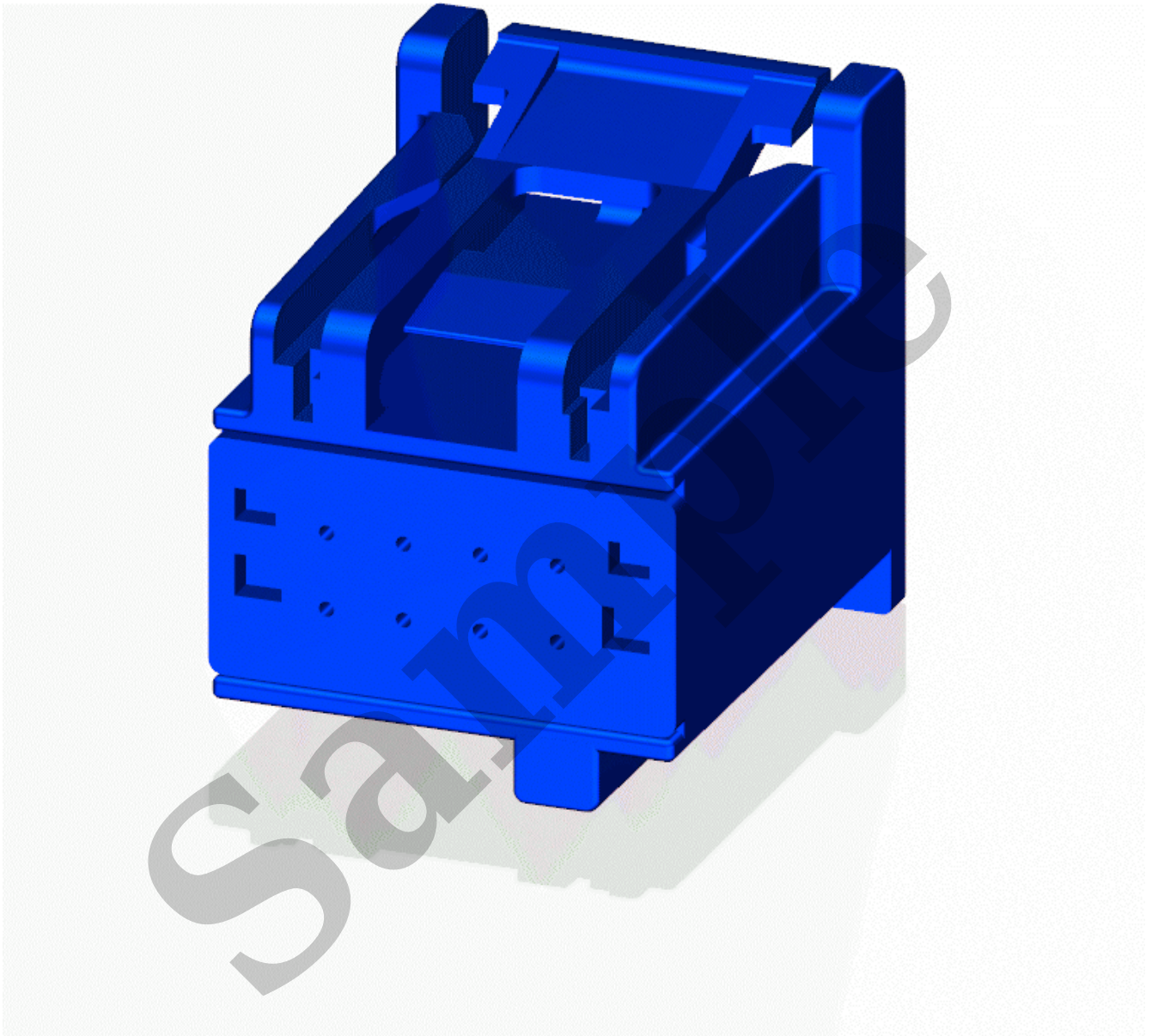
Pin	Cicuit	Cicuit Function	Color	Gauge/Size	Option
SEAT_BACK_2ND_ROW					
1	R72	SIGNAL	VT	0.35	
2	R92	DETECTION SIGNAL	GN	0.35	2ND ROW OCCUPANT DETECTION SENSOR

Connector Views



Pin	Cicuit	Cicuit Function	Color	Gauge/Size	Option
JUMPER_DOOR_TRIM_DRIVER					
1	D903	LIN BUS	GN	0.35	
2	N0	NO CONNECT	NA	0	
3	N0	NO CONNECT	NA	0	
4	N0	NO CONNECT	NA	0	
5	N0	NO CONNECT	NA	0	
6	N0	NO CONNECT	NA	0	
7	E13	DIMMING SIGNAL	OG	0.35	
8	N0	NO CONNECT	NA	0	
9	D512	RETURN	GY	0.35	
10	P743	RETURN	BG	0.35	

## Connector Views



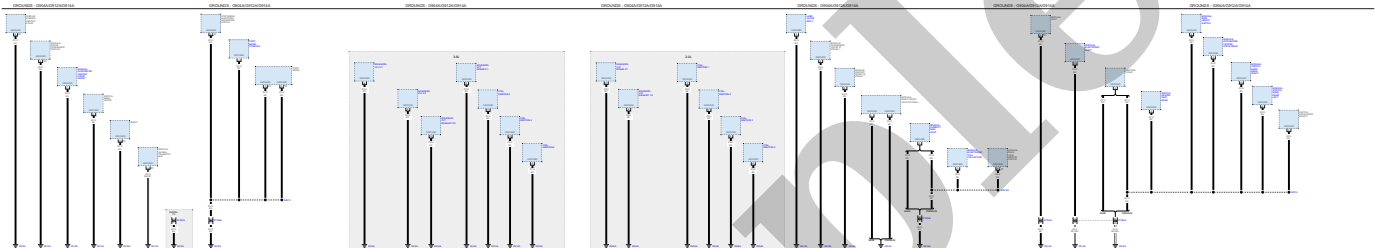
Wire Insertion Side:

YOUR CURRENT VEHICLE

Grounds - G904a/G912a/G914a

GROUNDS - G904A/G912A/G914A

GROUNDS - G904A/G912A/G914A



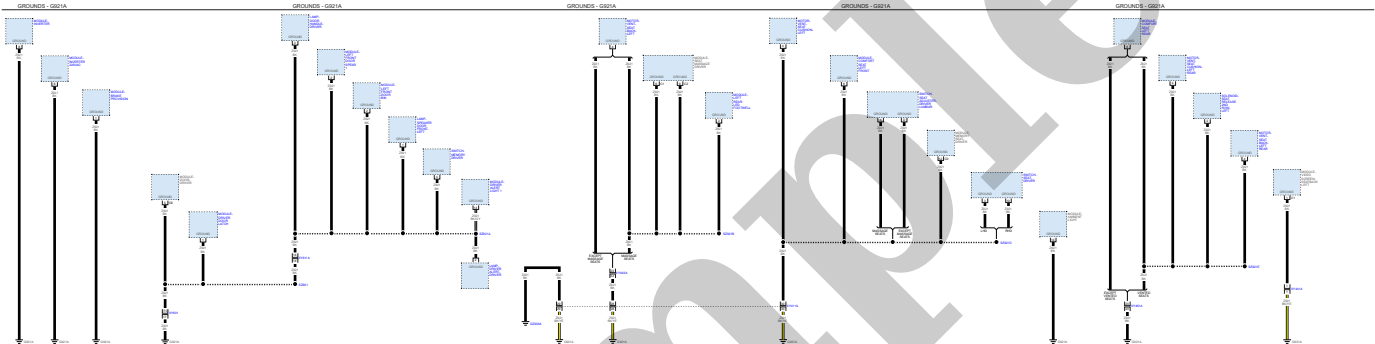


YOUR CURRENT VEHICLE

Grounds - G921a

GROUNDS - G921A

GROUNDS - G921A



YOUR CURRENT VEHICLE

Grounds - G935a/G935b

GROUNDS - G935A/G935B

GROUNDS - G935A/G935B

