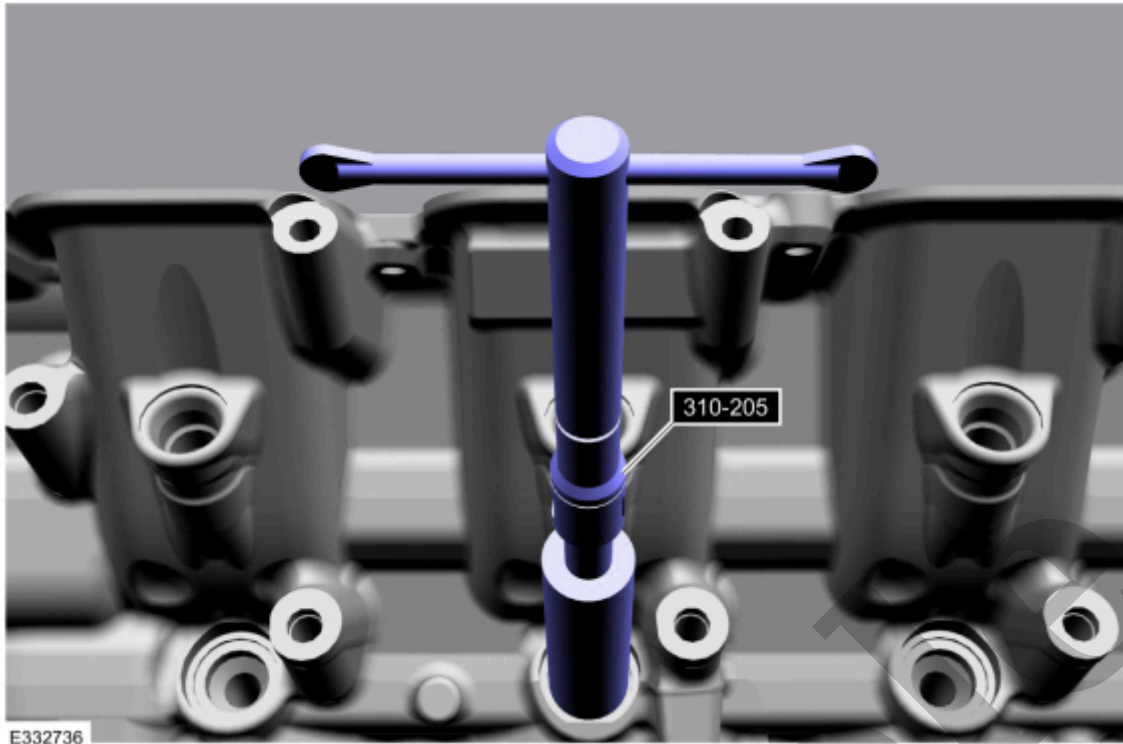


Your Ultimate Source for OEM Repair Manuals

FactoryManuals.net is a great resource for anyone who wants to save money on repairs by doing their own work. The manuals provide detailed instructions and diagrams that make it easy to understand how to fix a vehicle.

2022 Ford Edge Service and Repair Manual

[Go to manual page](#)



[Click here to learn about symbols, color coding, and icons used in this manual.](#)

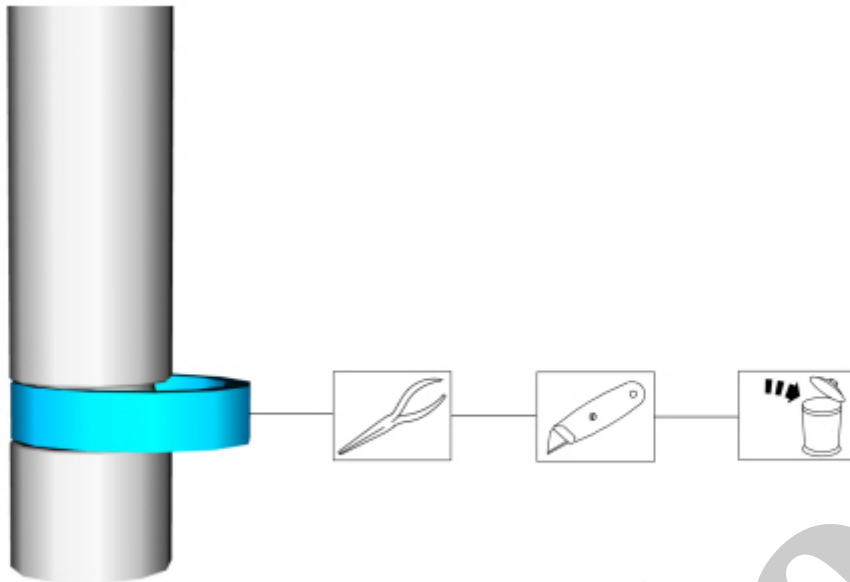
11. 1. Remove and discard the fuel injector O-ring seals.

2. **NOTE**

Note the correct orientation of the fuel injector support rings for correct installation of the NEW fuel injector support rings.

Remove and discard the fuel injector support rings.

3. Inspect the inlet stopper, if it is damaged or comes off then discard the inlet stopper. The inlet stopper is not needed for proper function. Ensure that any debris from the inlet stopper are removed. If the inlet stopper is intact and undamaged do not remove the inlet stopper from the fuel injector.



E168006

[Click here to learn about symbols, color coding, and icons used in this manual.](#)

Installation

1. NOTICE

Do not lubricate the new lower Teflon® fuel injector seals.

1. Install the Teflon® Seal Guide onto the fuel injector tip.

Use Special Service Tool : 310-207 Installer, Fuel Injector Seal Assembly

2. NOTICE

Once the Teflon® seal is installed on the Teflon® Seal Guide, it should immediately be installed onto the fuel injector to avoid excessive expansion of the Teflon® seal.

NOTE

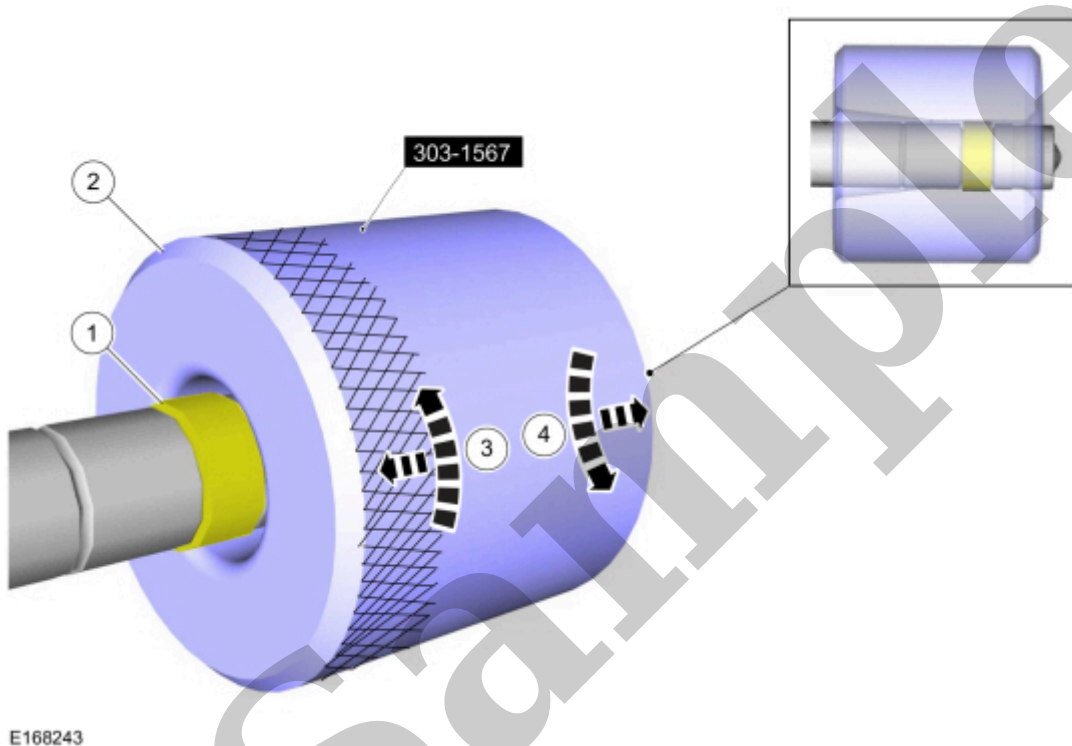
Make sure that new lower fuel injector Teflon® seals are installed.

Install the new Teflon® seals onto the Teflon® Seal Guide, using the Pusher Tool, slide the Teflon® seals along the Teflon® Seal Guide.

2. Massage and warm the Teflon® seal with your fingers before the Teflon® seal sizer tool is installed. This will aid in installing the Teflon® seal sizer tool.
3. Position the Teflon® seal sizer tool with the larger opening towards the Teflon® seal. Push while turning the Teflon® seal sizer tool 180 degrees.

Use Special Service Tool : 303-1567 Sizer, Teflon Seal

4. Once the Teflon® seal sizer tool is installed, check and make sure the Teflon® seal is in the sizing portion of the Teflon® seal sizer tool.
5. After one minute, turn the Teflon® seal sizer tool back 180 degrees and remove.



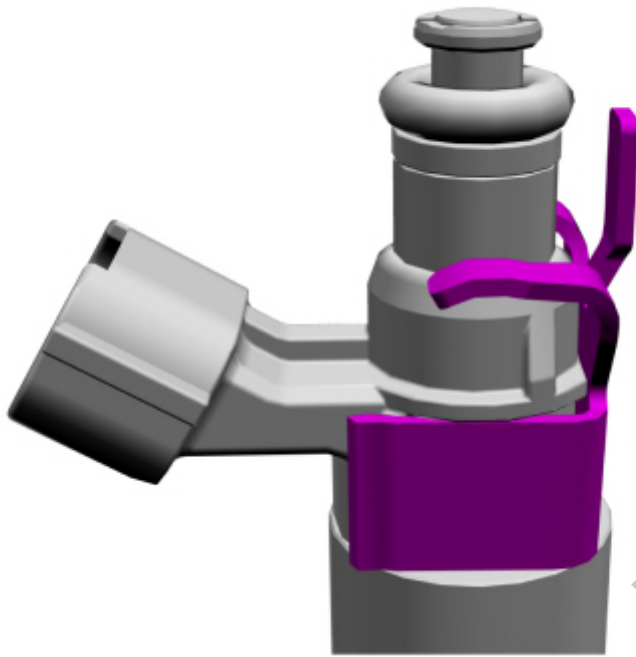
[Click here to learn about symbols, color coding, and icons used in this manual.](#)

3. NOTE

Make sure that new fuel injector support rings and new fuel injector O-ring seals are installed.

1. Install the new fuel injector O-rings. The O-rings are pre-lubricated, no additional lubricant is required.

2. NOTICE



E257412

[Click here to learn about symbols, color coding, and icons used in this manual.](#)

5. **NOTE**

The anti-rotation finger of the fuel injector must slip into the groove of the fuel rail cup.

Install the fuel injectors to the fuel rail.

7. NOTE

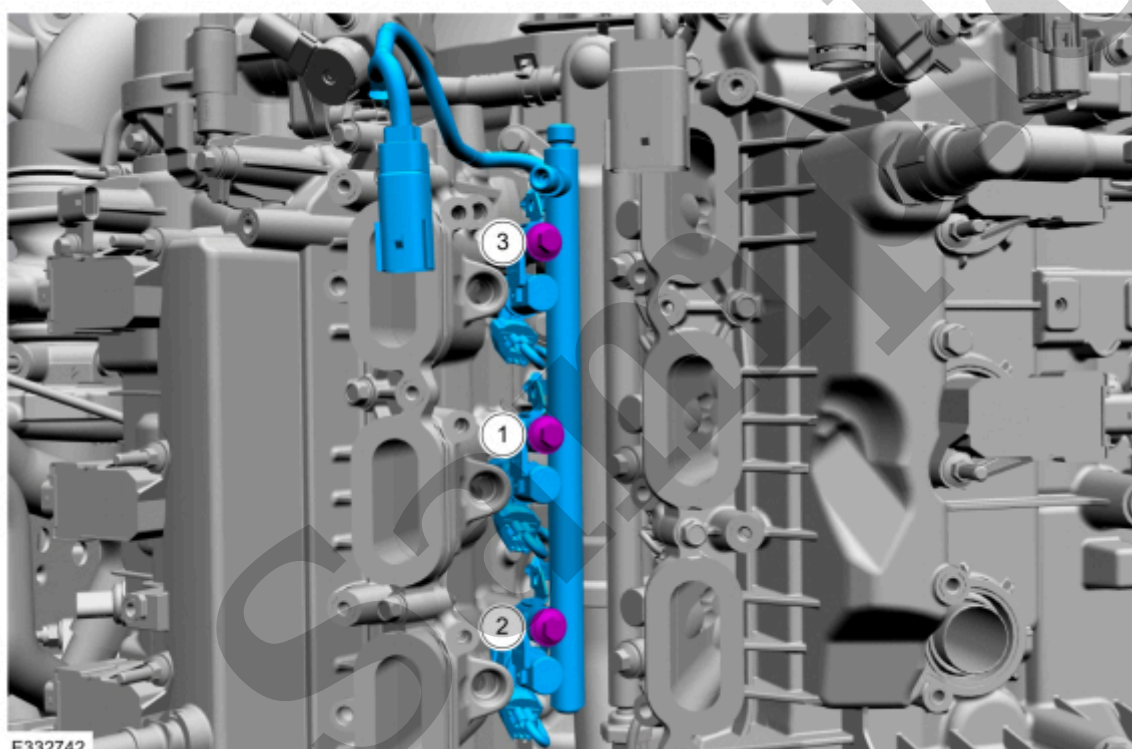
Do not lubricate the new lower Teflon® fuel injector seals.

Install the fuel rail, push down on the fuel rail above the fuel injectors, apply an even force to ensure that the fuel rail seats parallel to the cylinder head mounting bosses. Install the bolts and hand tighten until snug.

Torque :

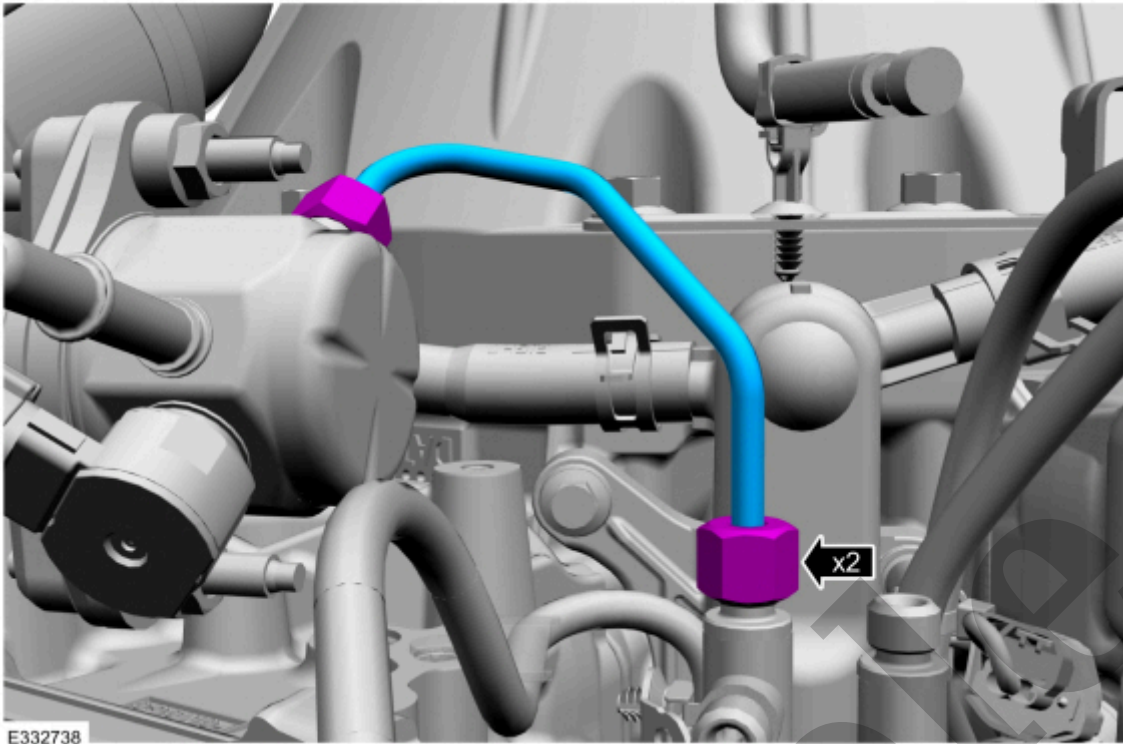
Stage 1: Tighten the bolts one revolution at the time, in the sequence shown, until all of the fuel rail mounting brackets are seated flat on the cylinder head mounting bosses: : 1 turn(s)

Stage 2: Tighten in the sequence shown to: : 18 lb.ft (24 Nm)



[Click here to learn about symbols, color coding, and icons used in this manual.](#)

8. Connect the harness retainer and the fuel injector main harness electrical connector.



[Click here to learn about symbols, color coding, and icons used in this manual.](#)

10. **NOTE**

Make sure that a new high-pressure fuel tube is installed.

1. Calculate the correct torque wrench setting for the following torque using the Torque Wrench Adapter Formulas.

2. **NOTICE**

In stage 2, if the torque required to tighten any flare nut on the new high-pressure fuel tube reaches or exceeds 55 lb.ft (75 Nm), then that high pressure fuel tube must be discarded and replaced with another new high-pressure fuel tube.

Install the high-pressure fuel tube and tighten the flare nuts finger tight, then tighten the flare nuts in the following 2 stages.

Torque :

Stage 1: Tighten to : 62 lb.in (7 Nm)

Stage 2: Tighten an additional : 30°

Fuel Injectors

303-04A Fuel Charging and Controls - 2.7L EcoBoost (238kW/324PS)	2022 F-150
Removal and Installation	Procedure revision date: 07/12/2017

Fuel Injectors

Removal and Installation

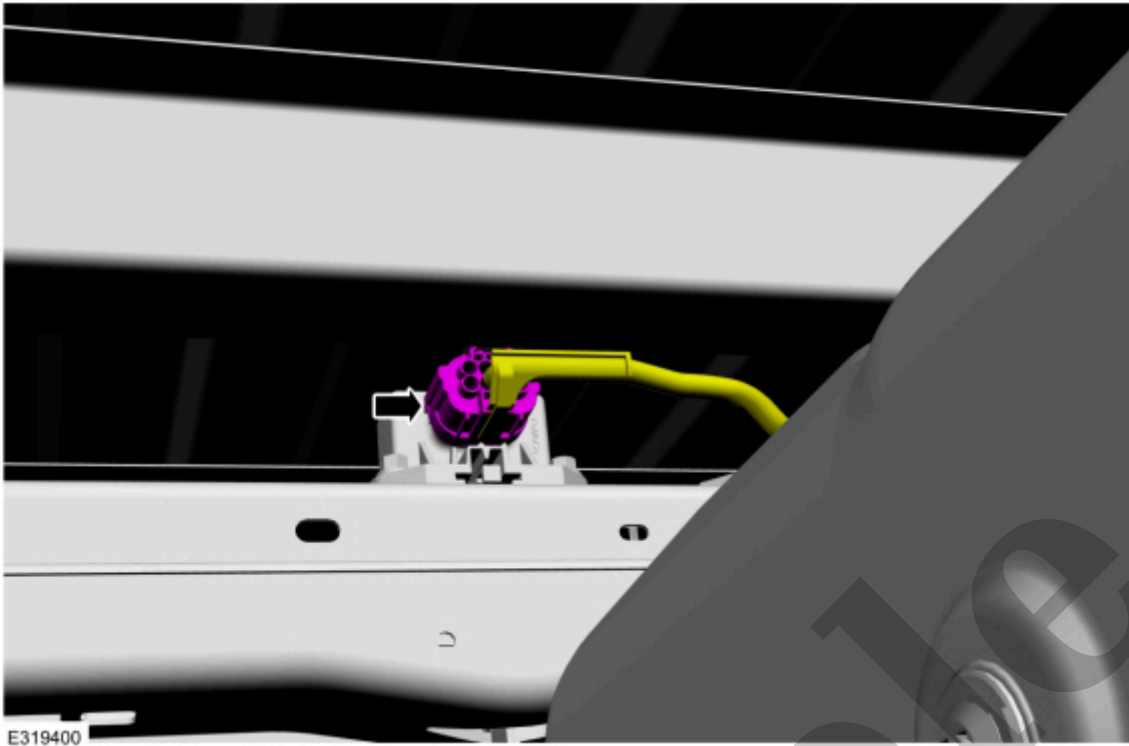
1. The fuel injectors are removed with the fuel rails.

Refer to: [Direct Injection Fuel Rail LH](#)(303-04A Fuel Charging and Controls - 2.7L EcoBoost (238kW/324PS), Removal and Installation).

Refer to: [Direct Injection Fuel Rail RH](#)(303-04A Fuel Charging and Controls - 2.7L EcoBoost (238kW/324PS), Removal and Installation).

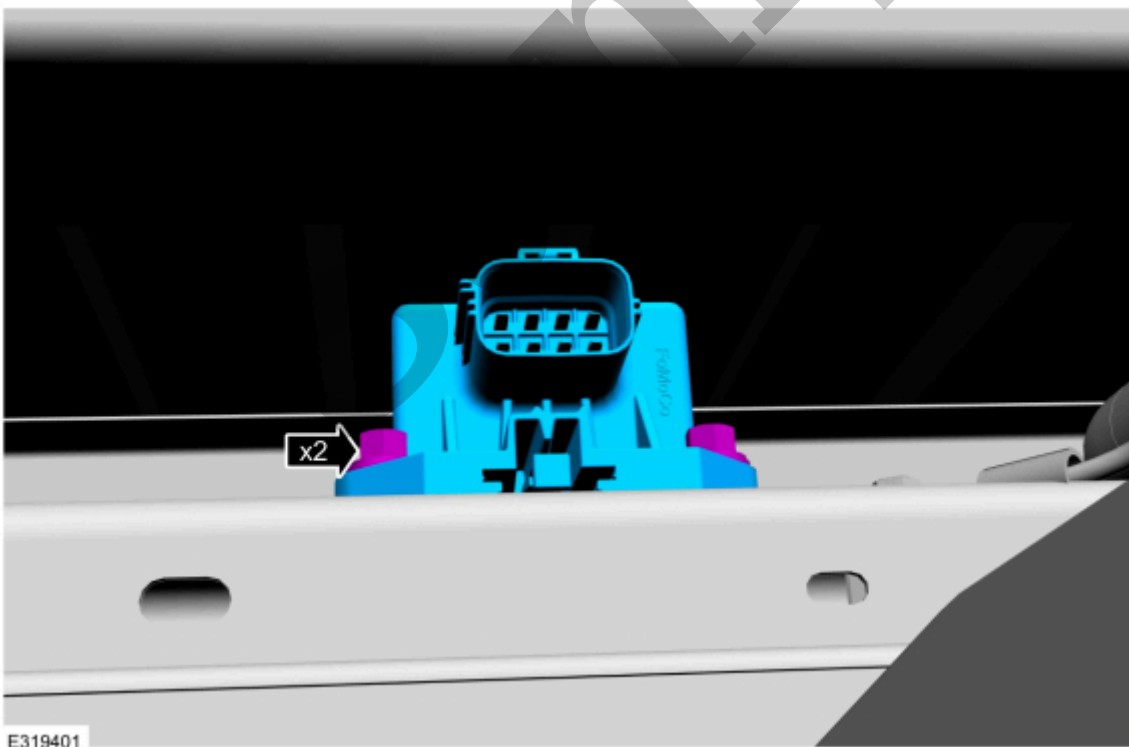
Refer to: [Port Injection Fuel Rail LH](#)(303-04A Fuel Charging and Controls - 2.7L EcoBoost (238kW/324PS), Removal and Installation).

Refer to: [Port Injection Fuel Rail RH](#)(303-04A Fuel Charging and Controls - 2.7L EcoBoost (238kW/324PS), Removal and Installation).



[Click here to learn about symbols, color coding, and icons used in this manual.](#)

3. Remove the fuel pump driver module bolts, then remove the fuel pump driver module.



[Click here to learn about symbols, color coding, and icons used in this manual.](#)

Installation

[Click here to learn about symbols, color coding, and icons used in this manual.](#)

Copyright © Ford Motor Company

Sample