

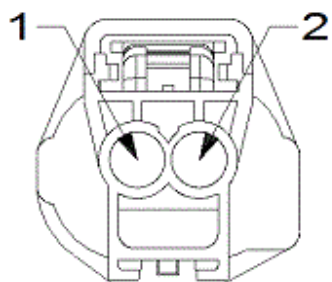
Your Ultimate Source for OEM Repair Manuals

FactoryManuals.net is a great resource for anyone who wants to save money on repairs by doing their own work. The manuals provide detailed instructions and diagrams that make it easy to understand how to fix a vehicle.

2019 Jeep GRAND COMMANDER Service Manual

[Go to manual page](#)

Connector Views



Pin	Circuit	Circuit Function	Color	Gauge/Size	Option
DASH					
1	C900	RELAY OUTPUT	BU	1.0	
2	Z906	GROUND	BK	1.0	LHD
2	Z907	GROUND	BK	1.0	RHD

YOUR CURRENT VEHICLE

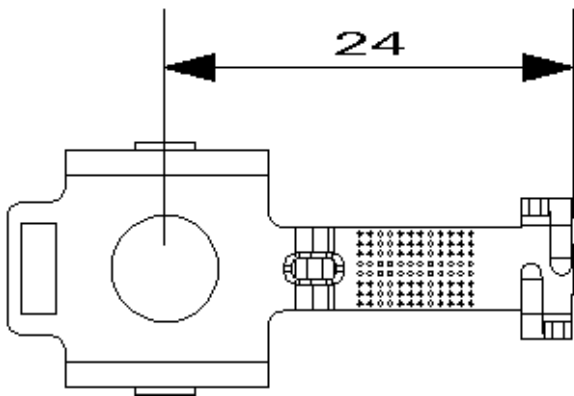
GZ933A

GZ933A

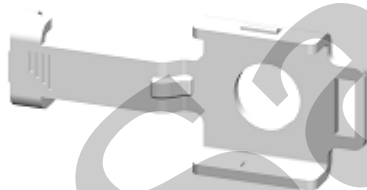
HARNESS_CONNECTOR No:GZ933A		Option:Standard
Connector Details		Harness Family
Color	NA	
Part Number	15509708	SEAT_CUSHION_DRIVER
Repair Kit Part Number		SEAT_CUSHION_DRIVER
Part Description		SEAT_CUSHION_DRIVER
Cavity Count	1	SEAT_CUSHION_DRIVER
Location View	Location View	SEAT_CUSHION_DRIVER

Connector Views
Mating Side:

Connector Views



Isometric View:



Pin	Cicuit	Cicuit Function	Color	Gauge/Size	Option
Body					
1	Z937	GROUND	BK	0.50	

Sample

YOUR CURRENT VEHICLE

Heater-Battery Coolant C2

HEATER-BATTERY COOLANT C2

HARNESS_CONNECTOR No:D2750B		Option:Standard
Connector Details		Harness Family
Color	ORANGE	
Part Number	2103628-5	HV_COOLANT_HEATER_TO_BATTERY
Repair Kit Part Number		HV_COOLANT_HEATER_TO_BATTERY
Part Description		HV_COOLANT_HEATER_TO_BATTERY
Cavity Count	2	HV_COOLANT_HEATER_TO_BATTERY
Location View	Location View	HV_COOLANT_HEATER_TO_BATTERY

Pin	Cicuit	Cicuit Function	Color	Gauge/Size	Option
HV_COOLANT_HEATER_TO_BATTERY					
1	H330	HIGH VOLTAGE DC 300V (+)	OG	4.0	
2	H331	HIGH VOLTAGE DC 300V (-)	OG	4.0	

YOUR CURRENT VEHICLE

Heater-Seat Back-Left Rear

HEATER-SEAT BACK-LEFT REAR

HARNESS_CONNECTOR No:D2456A		Option:3RD ROW
Connector Details		Harness Family
Color	GRAY	
Part Number	31068-1071	SEAT_2ND_ROW_LEFT
Repair Kit Part Number	Terminal Kits Only	SEAT_2ND_ROW_LEFT
Part Description		SEAT_2ND_ROW_LEFT
Cavity Count	4	SEAT_2ND_ROW_LEFT
Location View	Location View	SEAT_2ND_ROW_LEFT

Pin	Cicuit	Cicuit Function	Color	Gauge/Size	Option
SEAT_2ND_ROW_LEFT					
1	P863	POWER SUPPLY	GN	0.75	
2	P867	SENSOR RETURN	GN	0.35	
3	P866	TEMP SIGNAL	BG	0.35	
4	P864	RETURN	GN	0.75	

HEATER-SEAT BACK-RIGHT REAR

HARNESS_CONNECTOR No:D2400A		Option:EXCEPT 3RD ROW
Connector Details		Harness Family
Color	GRAY	
Part Number	31068-1071	SEAT_BACK_2ND_ROW
Repair Kit Part Number	Terminal Kits Only	SEAT_BACK_2ND_ROW
Part Description		SEAT_BACK_2ND_ROW
Cavity Count	4	SEAT_BACK_2ND_ROW
Location View	Location View	SEAT_BACK_2ND_ROW

Pin	Cicuit	Cicuit Function	Color	Gauge/Size	Option
SEAT_BACK_2ND_ROW					
1	P873	POWER SUPPLY	GN	0.75	
2	P877	SENSOR RETURN	GN	0.35	
3	P876	TEMP SIGNAL	BG	0.35	
4	P874	RETURN	GN	0.75	

YOUR CURRENT VEHICLE

Heater-Seat Cushion-Left

HEATER-SEAT CUSHION-LEFT

HARNESS_CONNECTOR No:D6661A		Option:Standard
Connector Details		Harness Family
Color	BLACK	
Part Number	31068-1070	SEAT_CUSHION_DRIVER
Repair Kit Part Number	Terminal Kits Only	SEAT_CUSHION_DRIVER
Part Description		SEAT_CUSHION_DRIVER
Cavity Count	4	SEAT_CUSHION_DRIVER
Location View	Location View	SEAT_CUSHION_DRIVER

Pin	Cicuit	Cicuit Function	Color	Gauge/Size	Option
SEAT_CUSHION_DRIVER					
1	P841	POWER SUPPLY	GN	0.75	
2	P847	SENSOR RETURN	GN	0.35	
3	P845	TEMP SIGNAL	DG	0.35	
4	P842	RETURN	GN	0.75	

YOUR CURRENT VEHICLE

HV Disconnect

HV DISCONNECT

HARNESS_CONNECTOR No:D8108A		Option:Standard
Connector Details		Harness Family
Color	GREEN	
Part Number	806-820-541	HV_TEST_PORT
Repair Kit Part Number	68545713AA	HV_TEST_PORT
Part Description		HV_TEST_PORT
Cavity Count	4	HV_TEST_PORT
Location View	Location View	HV_TEST_PORT

Connector Views
Mating Side: