

# Your Ultimate Source for OEM Repair Manuals

FactoryManuals.net is a great resource for anyone who wants to save money on repairs by doing their own work. The manuals provide detailed instructions and diagrams that make it easy to understand how to fix a vehicle.

## 2018 NISSAN Altima Coupe OEM Service and Repair Workshop Manual

[Go to manual page](#)

## Fail-safe (Power Network Separate Relay)

SIEMD-7304749

If a malfunction occurs, the system will be canceled.

Sample

# Fail-safe (ADAS Control Unit 2)

SIEMD-7109083

Refer to [Fail-safe \(ADAS Control Unit 2\)](#).

Sample

# Fail-safe (Distance Sensor)

Refer to [Fail-safe \(Distance Sensor\)](#).

Sample

# Fail-safe (Front Camera Unit)

SIEMD-7109103

Refer to [Fail-safe \(Front Camera Unit\)](#).

Sample

# Fail-safe (Side Radar)

Refer to [Fail-safe \(Side Radar\)](#).

Sample


# Fail-safe (Driver Monitor Camera Control Unit)

SIEMD-7305982

Refer to [Fail-safe \(Driver Monitor Camera Control Unit\)](#).

Sample

## Warning/Indicator

| Name                   | Design  | Function  |
|------------------------|---|---|
| Hands OFF warning lamp |  | <ul style="list-style-type: none"><li>• For layout, refer to <a href="#">Design</a>.</li><li>• For function, refer to <a href="#">Hands OFF Warning Lamp</a>.</li></ul> |

## Warning/Indicator (On Information Display)

| Name                               | Function                             |
|------------------------------------|--------------------------------------|
| ProPILOT Assist 2.0 system display | Refer to <a href="#">Operation</a> . |

Sample



## FUNCTION DESCRIPTION

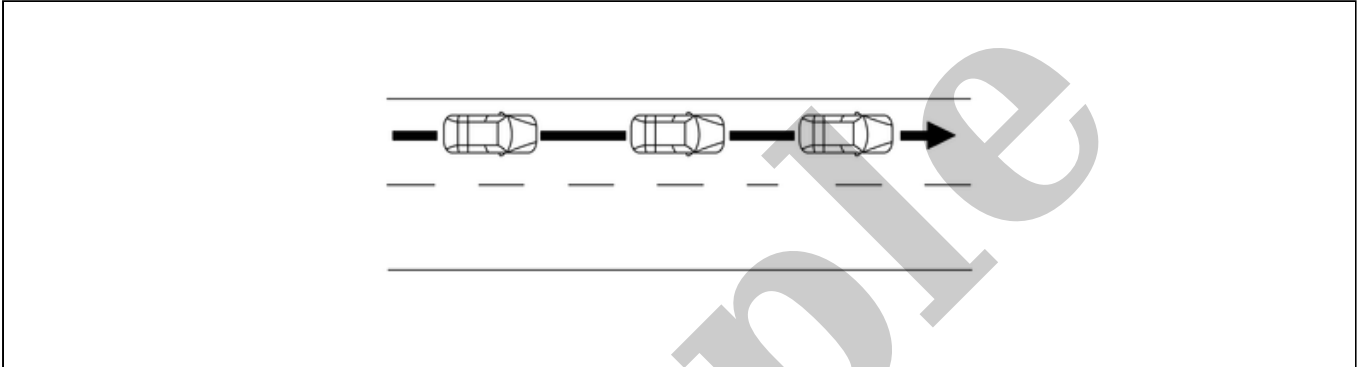
### LANE KEEPING FUNCTION DESCRIPTION

- Controls steering to travel vehicle near the center of lane and support driver's steering operation.

**CAUTION:**

Controls steering to travel vehicle near the center of lane. Does not react to a vehicle on the side approaching.

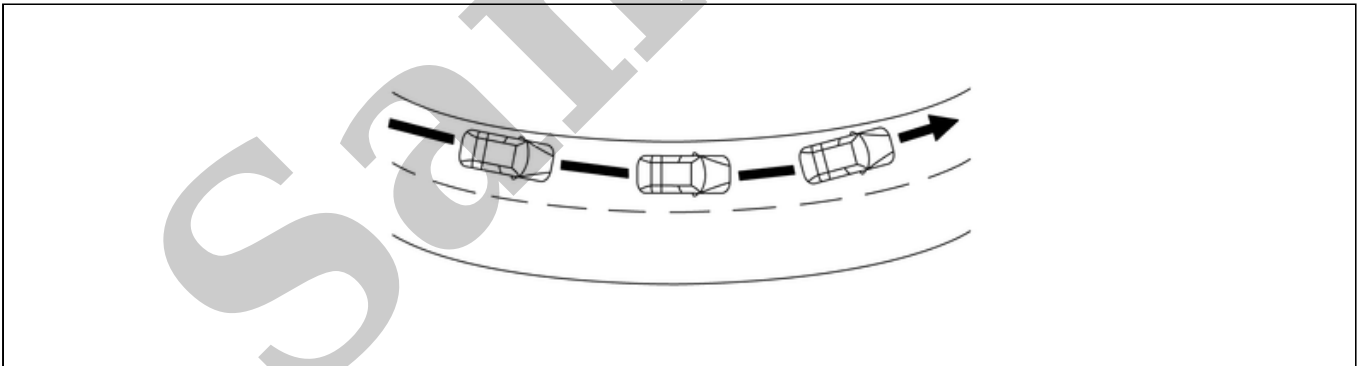
- Straight road



SIEMD-7307209-01-000276488

Detects lane markers in the travelling lane and supports steering to keep the travelling lane.

- Curved road



SIEMD-7307209-02-000276489

Detects lane makers in the travelling lane and support steering to keep the travelling lane in accordance with curve.

## OPERATION DESCRIPTION

- When the operating conditions are satisfied, ADAS control unit 2 controls the steering to travel near the center of the lane due to signals from each ECU, and support driver's steering operation.
- ADAS control unit 2 turns on the steering wheel support operation indicator in blue when the conditions are satisfied while travelling on highway or motorway with HD map. (ProPILOT Assist 2.0 display turns blue)

When the lane keeping function is activated, ADAS control unit 2 controls as follows.

- Under control (When ProPILOT Assist 2.0 display is blue)

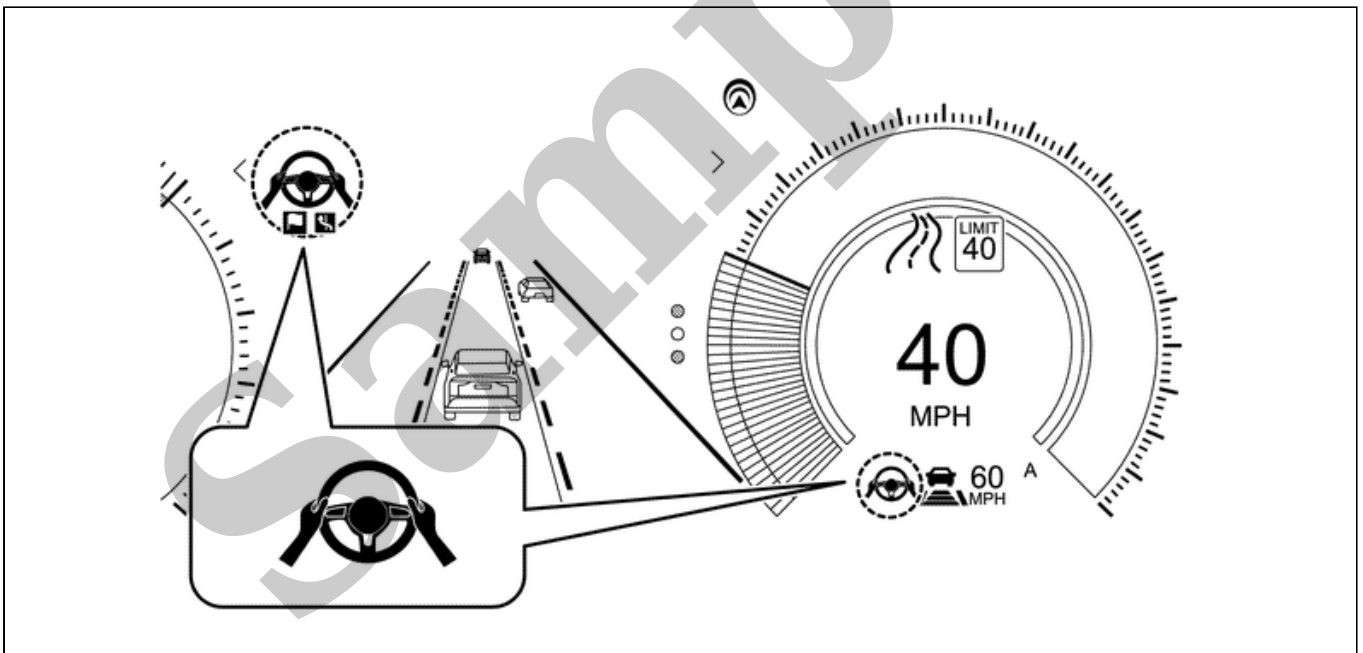
|                 |  |
|-----------------|--|
| (Straight road) | <ul style="list-style-type: none"> <li>Front camera unit detects lane markers in the travelling lane and transmits lane marker detection signal via CAN communication to ADAS control unit 2</li> <li>Based on lane marker detection signal and HD map data, ADAS control unit 2 transmits commands via CAN communication to the power steering control module for keeping the vehicle in the lane and supports steering</li> </ul>                          |
| (Curved road)   | <ul style="list-style-type: none"> <li>Font camera unit detects lane markers in the travelling lane and transmits lane marker detection signal to ADAS control unit 2 via CAN communication</li> <li>ADAS control unit 2 transmits commands to power steering control module via CAN communication based on lane marker detection signal and HD map data for keeping the vehicle in the lane, and supports steering steers according to the curve</li> </ul> |

- SIDE ATTENTION DETECTION**

ADAS control unit 2 detects presence or absence of vehicles on the side of own vehicle due to signal from side radar. When ProPILOT Assist 2.0 display is blue and there is a vehicle on the side of own vehicle, ADAS control unit 2 makes the combination meter display the presence of the vehicle.

## OPERATION CONDITION

- When the following conditions are satisfied, the steering support operation display turns on in green and the operation starts. (The display of ProPILOT Assist 2.0 turns green)



SIEMD-7307209-08-000399718

- When vehicle speed/vehicle-to-vehicle distance control function is operated
- When lane markers on both sides are detected
- When driver holds steering wheel
- When driving near the center of the lane
- When turn signal lamps are OFF
- When wiper is not operated at low speed or high speed
- When steering support is set to ON



**NOTE:**

**Lane markers are lines drawn on the right and/or left side of a lane.**