

Your Ultimate Source for OEM Repair Manuals

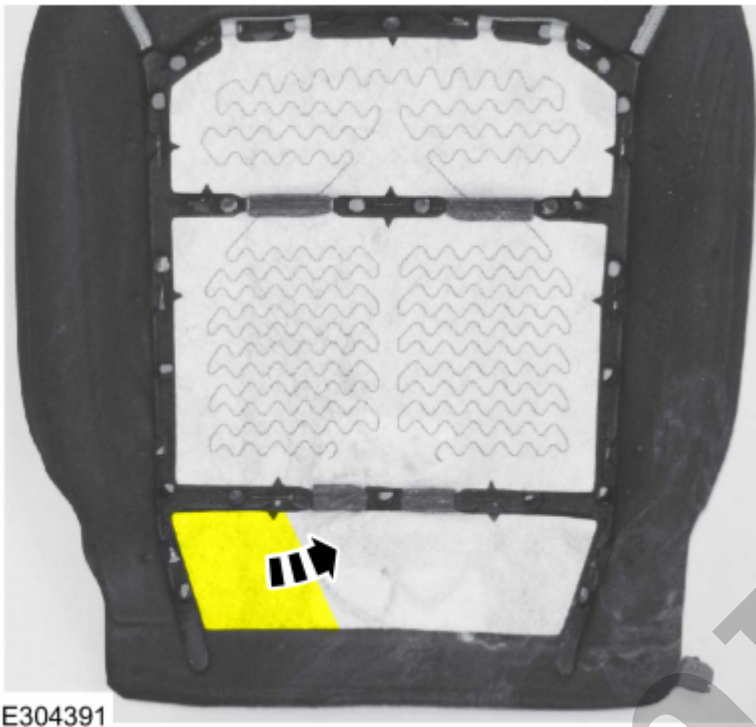
FactoryManuals.net is a great resource for anyone who wants to save money on repairs by doing their own work. The manuals provide detailed instructions and diagrams that make it easy to understand how to fix a vehicle.

2018 FORD Territory (China) OEM Service and Repair Workshop Manual

[Go to manual page](#)

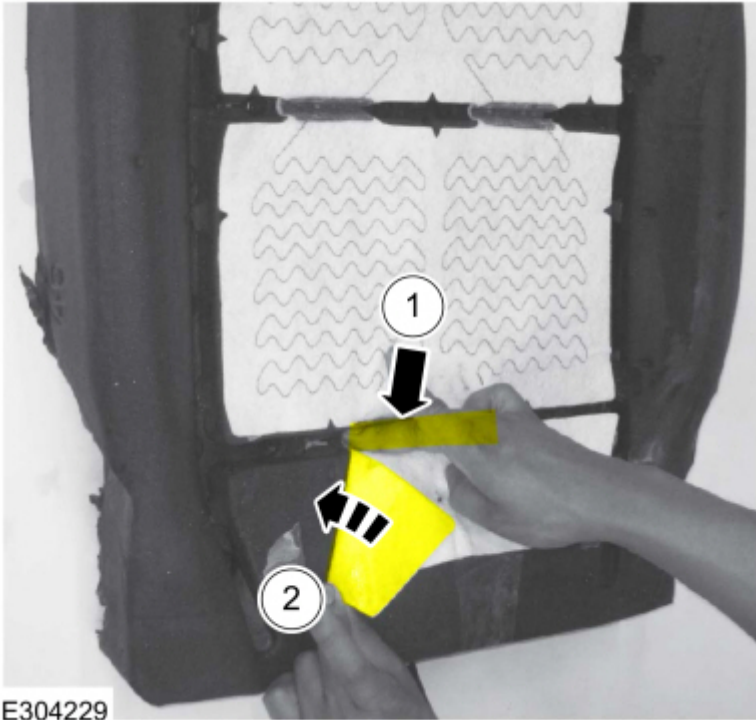
[Click here to learn about symbols, color coding, and icons used in this manual.](#)

19. Turn the LH (left-hand) rear section of the heater mat over to the other side to expose the adhesive paper overlay.



[Click here to learn about symbols, color coding, and icons used in this manual.](#)

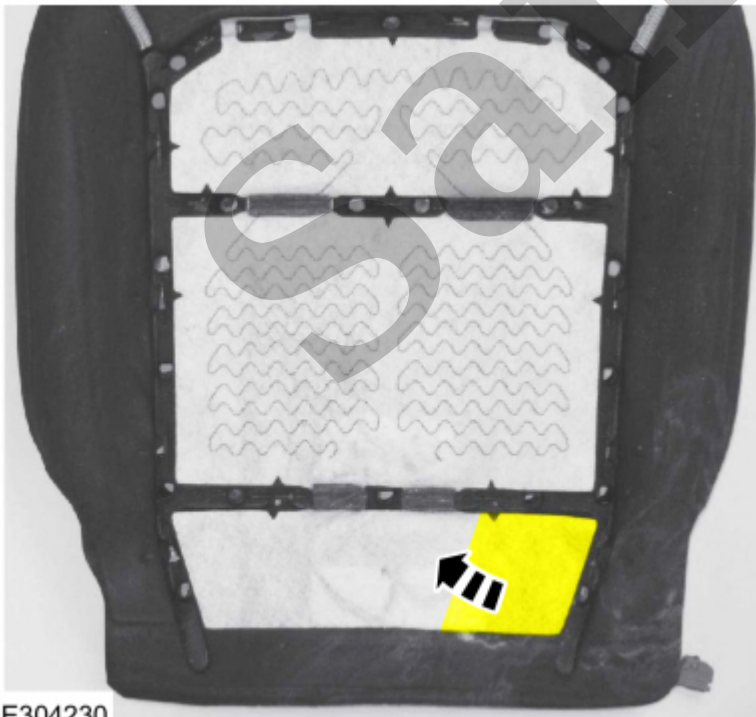
20. Remove the heater mat adhesive paper overlay.



E304229

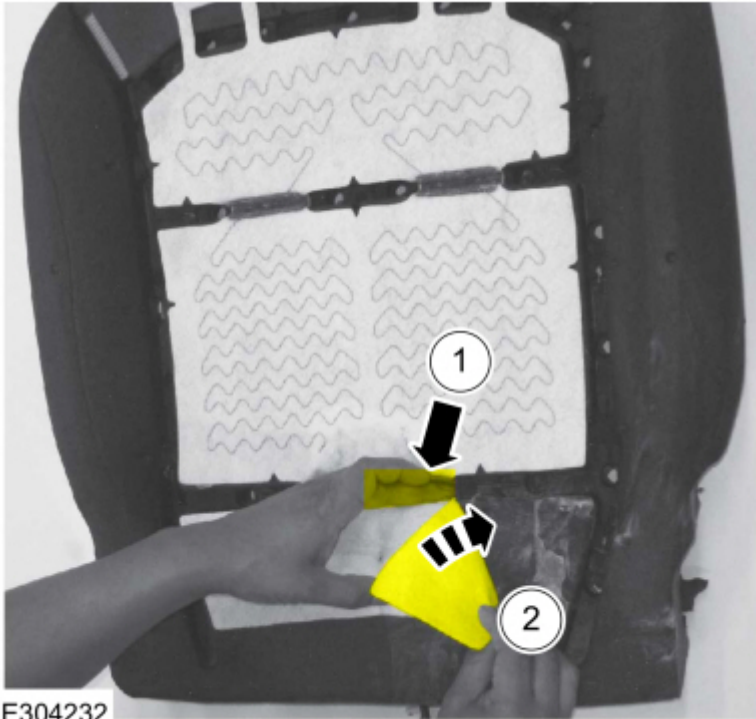
[Click here to learn about symbols, color coding, and icons used in this manual.](#)

22. Turn the RH (right-hand) rear section of the heater mat over to the other side to expose the adhesive paper overlay.



E304230

[Click here to learn about symbols, color coding, and icons used in this manual.](#)



[Click here to learn about symbols, color coding, and icons used in this manual.](#)

25. **NOTE**

Make sure the heater mat bottoms out in the trench but do not compress the foam. Light pressure is all that is needed.

If required, tuck the heater mat into the front trench.



Seat Heater Mat Removal

501-10A Front Seats	2022 F-150
General Procedures	Procedure revision date: 08/29/2019

Seat Heater Mat Removal

Repair

WARNING

To minimize the risk of injury, always wear protective gloves when working with a steamer. Failure to follow these instructions may result in serious personal injury.

NOTE

Click here to view a video version of the seat heater mat removal and installation.

A video version of this procedure is available on-line - View (<https://bcove.video/2ZjQILs>)

NOTE

During installation, it is allowable to adhere a new heater mat to any adhesive left behind on the foam.

NOTE

Typical seat cushion foam and heater mat shown, other seat cushion/backrest foam and heater mats are similar.

1. Acquire an automotive upholstery steamer with the following specifications.

6. NOTICE

Peel the heater mat off the foam slowly as to not damage the foam and to remove the most amount of adhesive as possible.

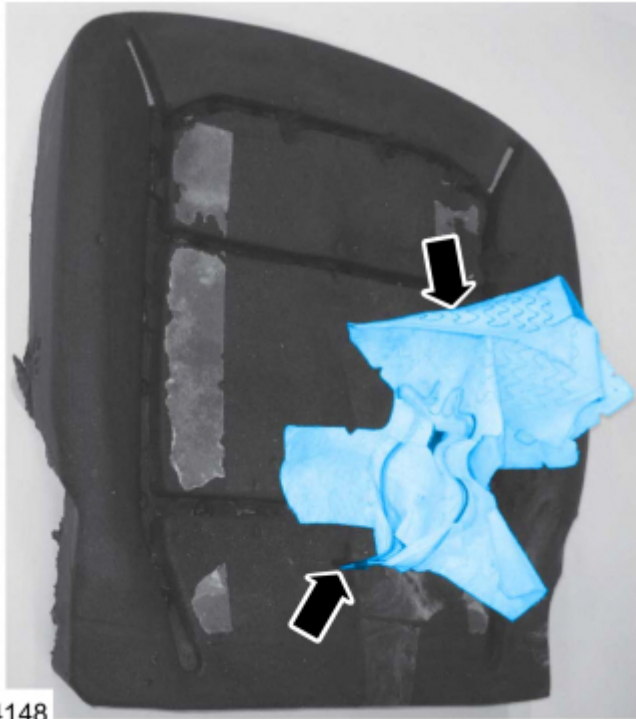
Slowly

pull the heater mat down the length of the adhesive strip, allowing the steamer head to follow and continue to soften the adhesive until the heater mat is detached from that portion of foam.



[Click here to learn about symbols, color coding, and icons used in this manual.](#)

7. Position the steamer head on the other side of the foam section. Apply steam to that area for approximately 15 seconds and slowly pull the heater mat down the length of the adhesive strip, allowing the steamer head to follow and continue to soften the adhesive until the heater mat is detached.



E304148

[Click here to learn about symbols, color coding, and icons used in this manual.](#)

9. **NOTE**

Allow enough time for the moisture/water to dry or the new heater mat will not stick to the foam.

Let the foam stand for 5 minutes to allow any residual moisture to evaporate.



Driver Front Seat Module (DSM)

<i>501-10A Front Seats</i>	<i>2022 F-150</i>
<i>Removal and Installation</i>	<i>Procedure revision date: 10/2/2020</i>

Driver Front Seat Module (DSM)

Removal

NOTE

Removal steps in this procedure may contain installation details.

1. NOTE

This step is only necessary when installing a new component.

NOTE

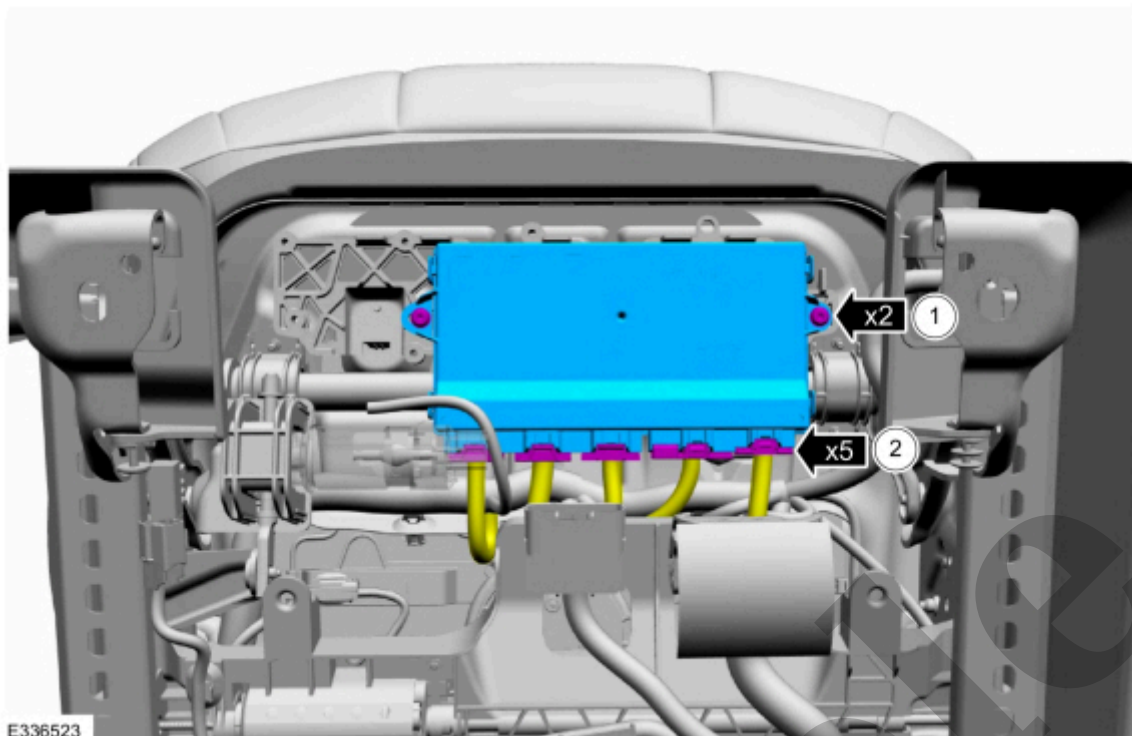
The PMI (programmable module installation) process must begin with the current DSM (driver front seat module) installed. If the current DSM (driver front seat module) does not respond to the diagnostic scan tool, the tool may prompt for As-Built Data as part of the repair.

Using a diagnostic scan tool, begin the PMI (programmable module installation) process for the DSM (driver front seat module) following the on-screen instructions.

2. If equipped.

Position the front multi-contour control pump aside.

1. Disconnect the electrical connector.



[Click here to learn about symbols, color coding, and icons used in this manual.](#)

Installation

All vehicles

1. To install, reverse the removal procedure.

2. NOTE

This step is only necessary when installing a new component.

Using a diagnostic scan tool, complete the PMI (programmable module installation) process for the DSM (driver front seat module) following the on-screen instructions.

3. NOTE

This step is only necessary when installing a new component.

Operate the front seat in all directions through the full range of travel to set soft stops and avoid a premature stopping point occurrence after the vehicle is returned to the customer.

Vehicles with memory pedals



Driver Multi-Contour Seat Module [SCMG]

501-10A Front Seats	2022 F-150
Removal and Installation	Procedure revision date: 10/2/2020

Driver Multi-Contour Seat Module [SCMG]

Removal

1. **NOTE**
- This step is necessary only when installing a new component.

NOTE

The PMI (programmable module installation) process must begin with the current SCMG (driver multi-contour seat module) installed. If the current SCMG (driver multi-contour seat module) does not respond to the diagnostic scan tool, the tool may prompt for As-Built Data as part of the repair.

Using a diagnostic scan tool, begin the PMI (programmable module installation) process for the SCMG (driver multi-contour seat module) following the on-screen instructions.

Front seat backrest

2. **NOTE**
- The front seat backrest driver seat SCMG (driver multi-contour seat module)/passenger seat SCMH (passenger multi-contour seat module) is part of the front seat power lumbar assembly and is serviced as an assembly.

Remove the front seat power lumbar assembly.