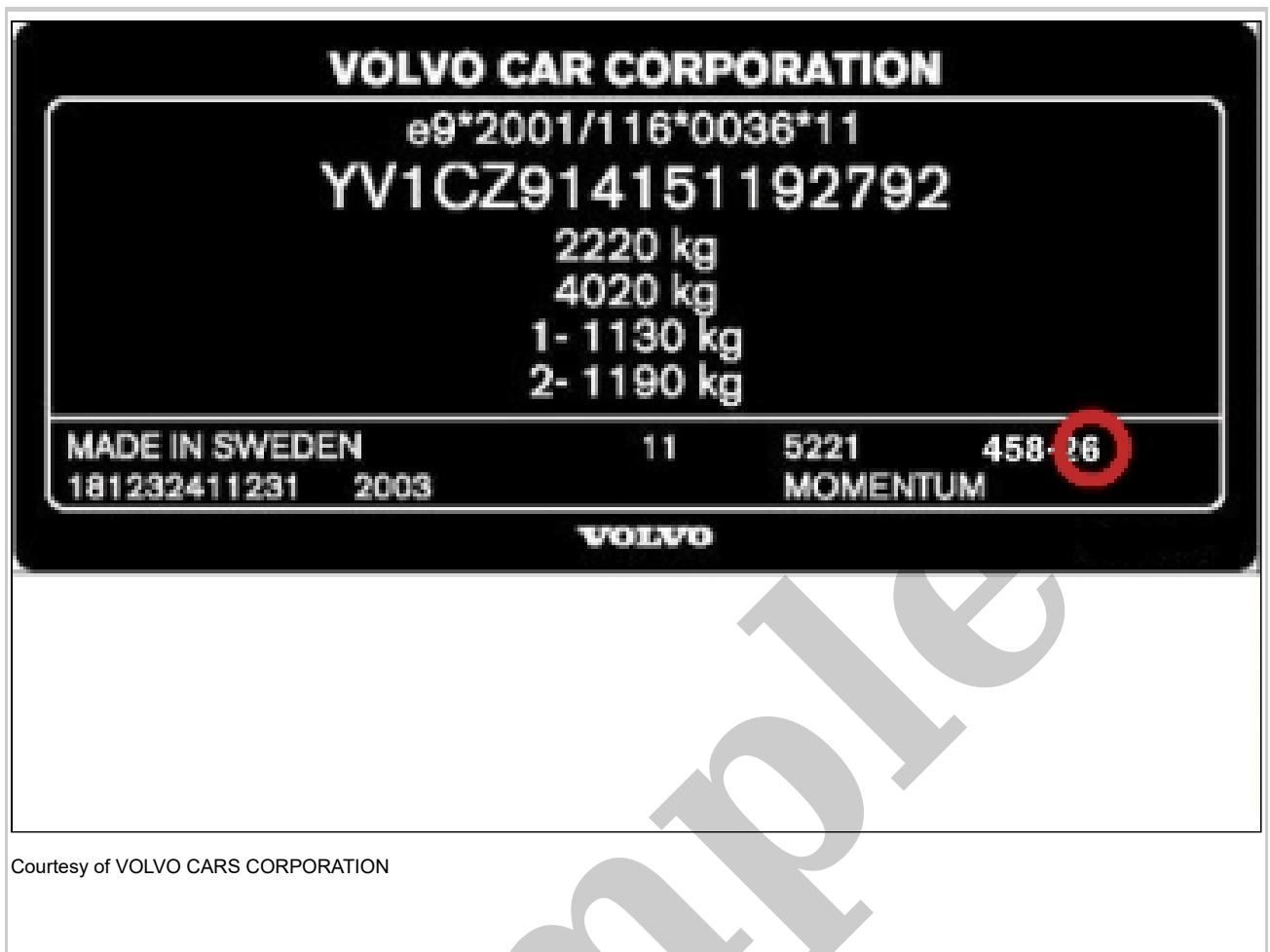


Your Ultimate Source for OEM Repair Manuals

FactoryManuals.net is a great resource for anyone who wants to save money on repairs by doing their own work. The manuals provide detailed instructions and diagrams that make it easy to understand how to fix a vehicle.

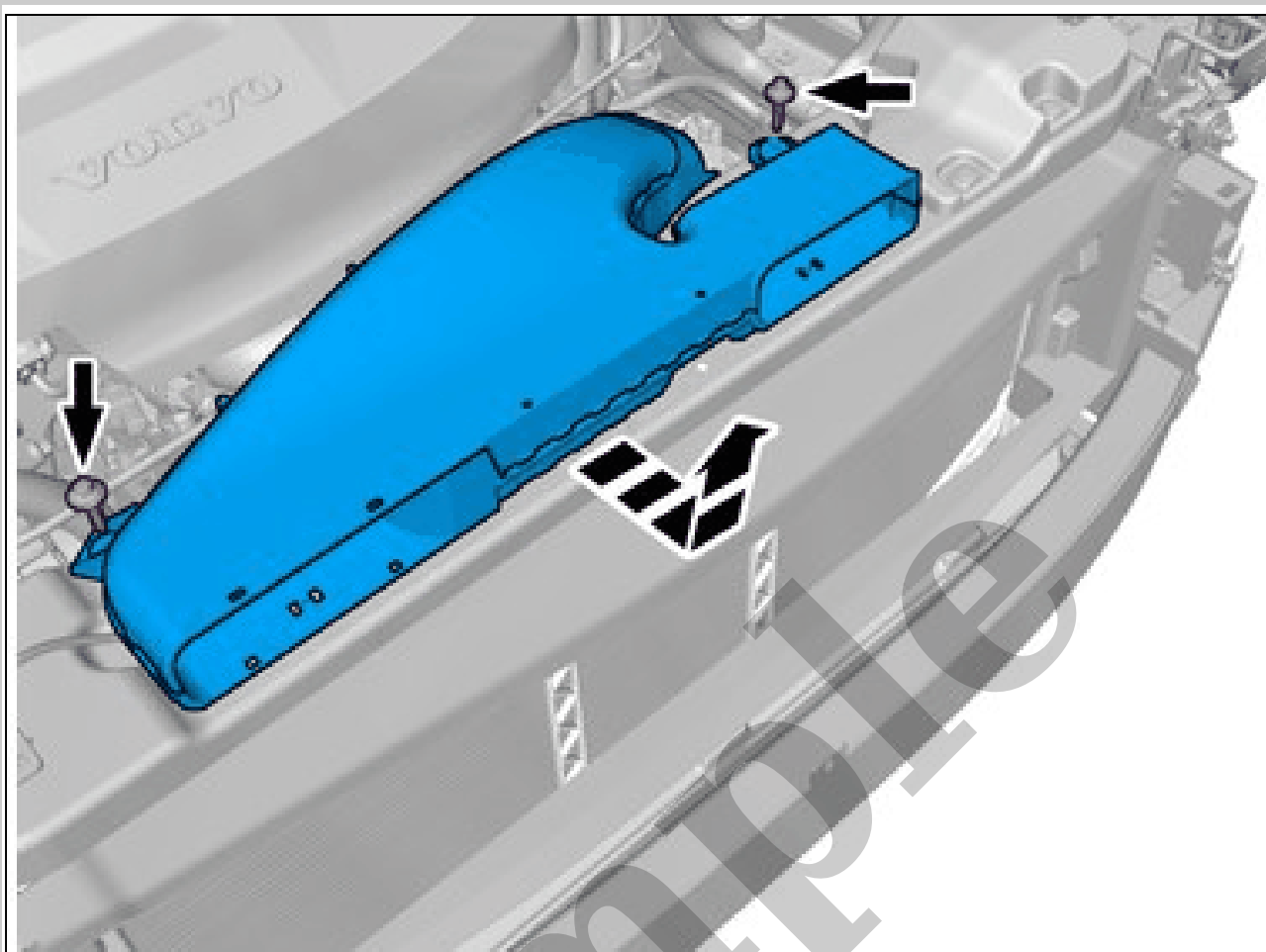
2017 VOLVO V40 OEM Service and Repair Workshop Manual

[Go to manual page](#)



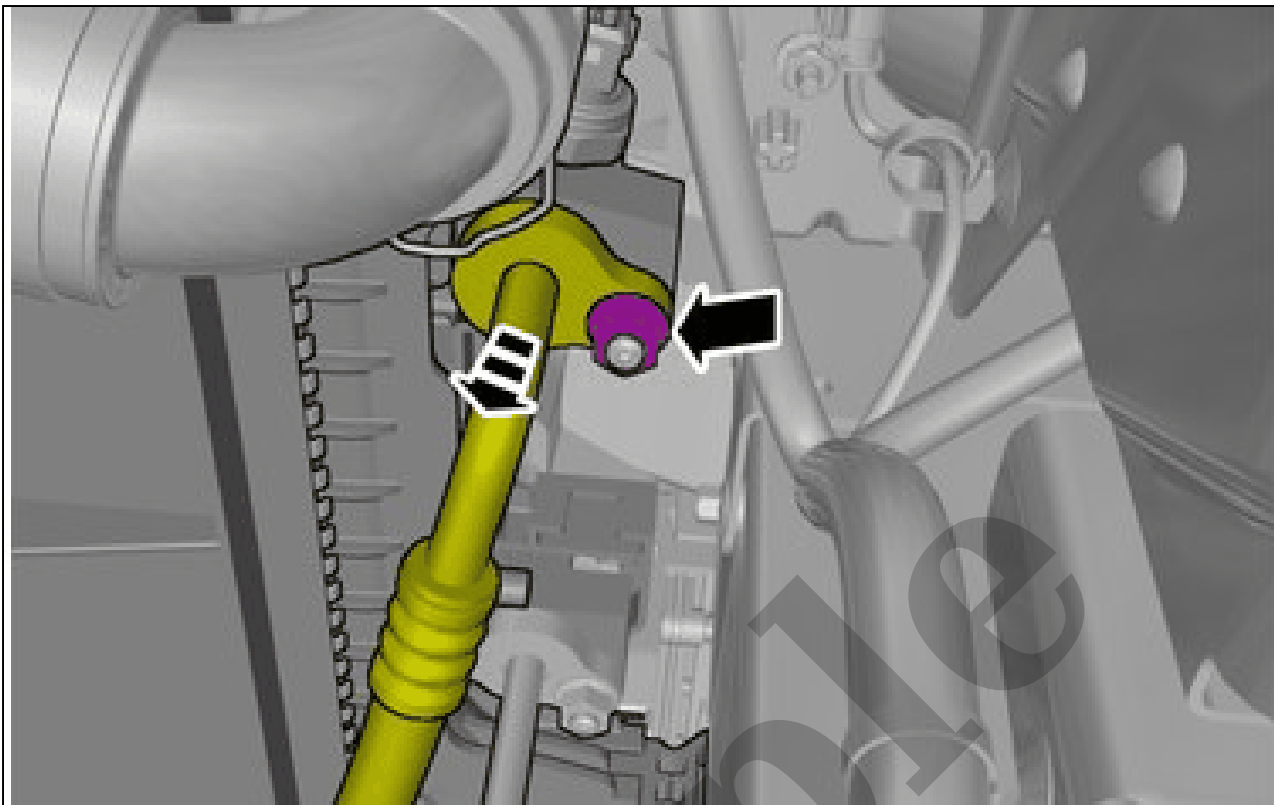
1. Solvent-based solid / metallic / pearl
2. Water-based metallic / pearl + 1K clear lacquer
3. Water-based solid + 1K clear lacquer
4. Solvent-based + 1K clear lacquer
5. Solvent-based pearl + 2K clear lacquer*
6. Water-based solid / metallic / pearl + 2K clear lacquer

* Depending on the transparent pearl paint, it contains a solid color that is to be applied before the pearl paint.



Courtesy of VOLVO CARS CORPORATION

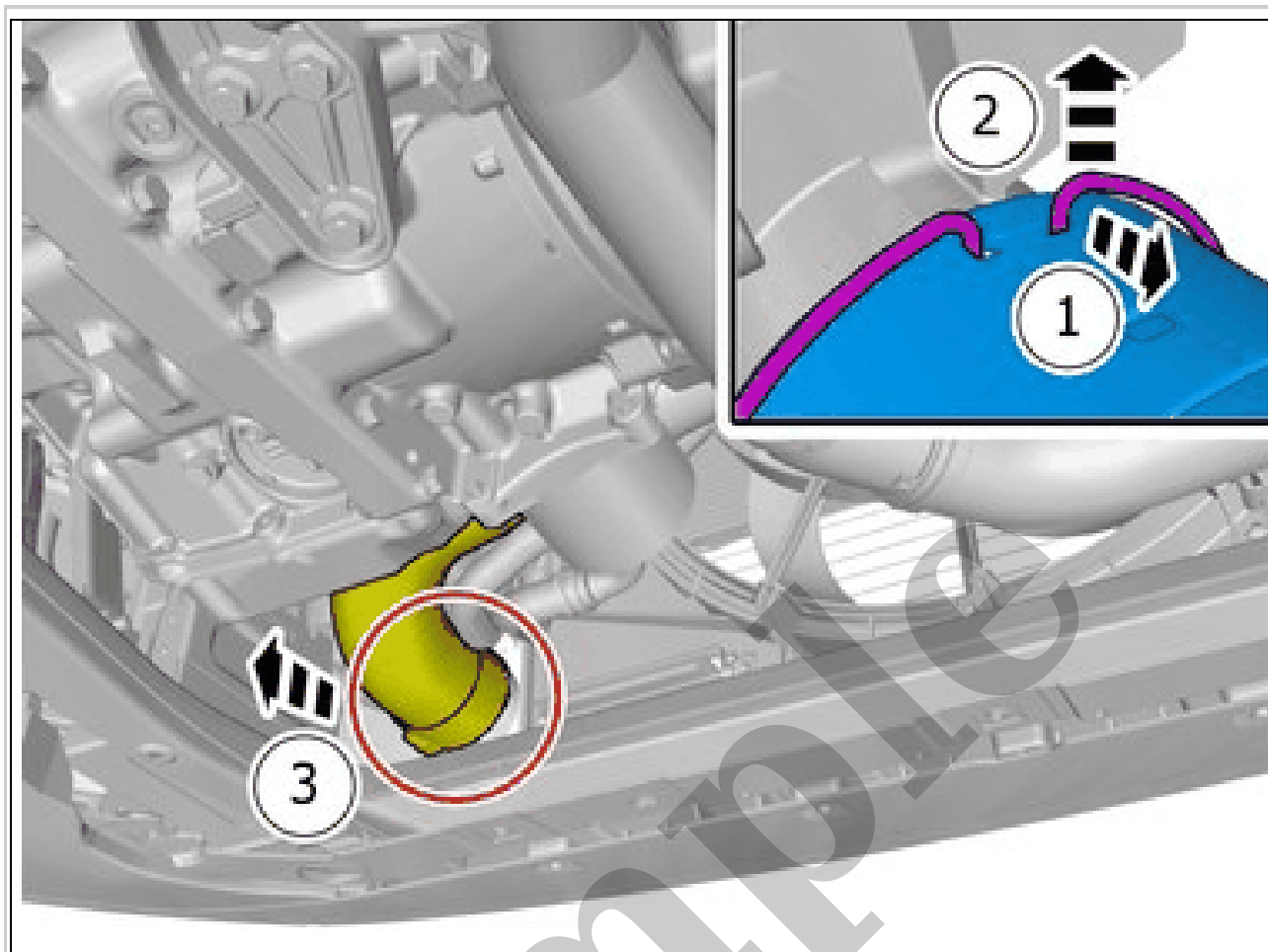
Remove the screws.
Remove the marked part.
Torque: M6, 10Nm



Courtesy of VOLVO CARS CORPORATION

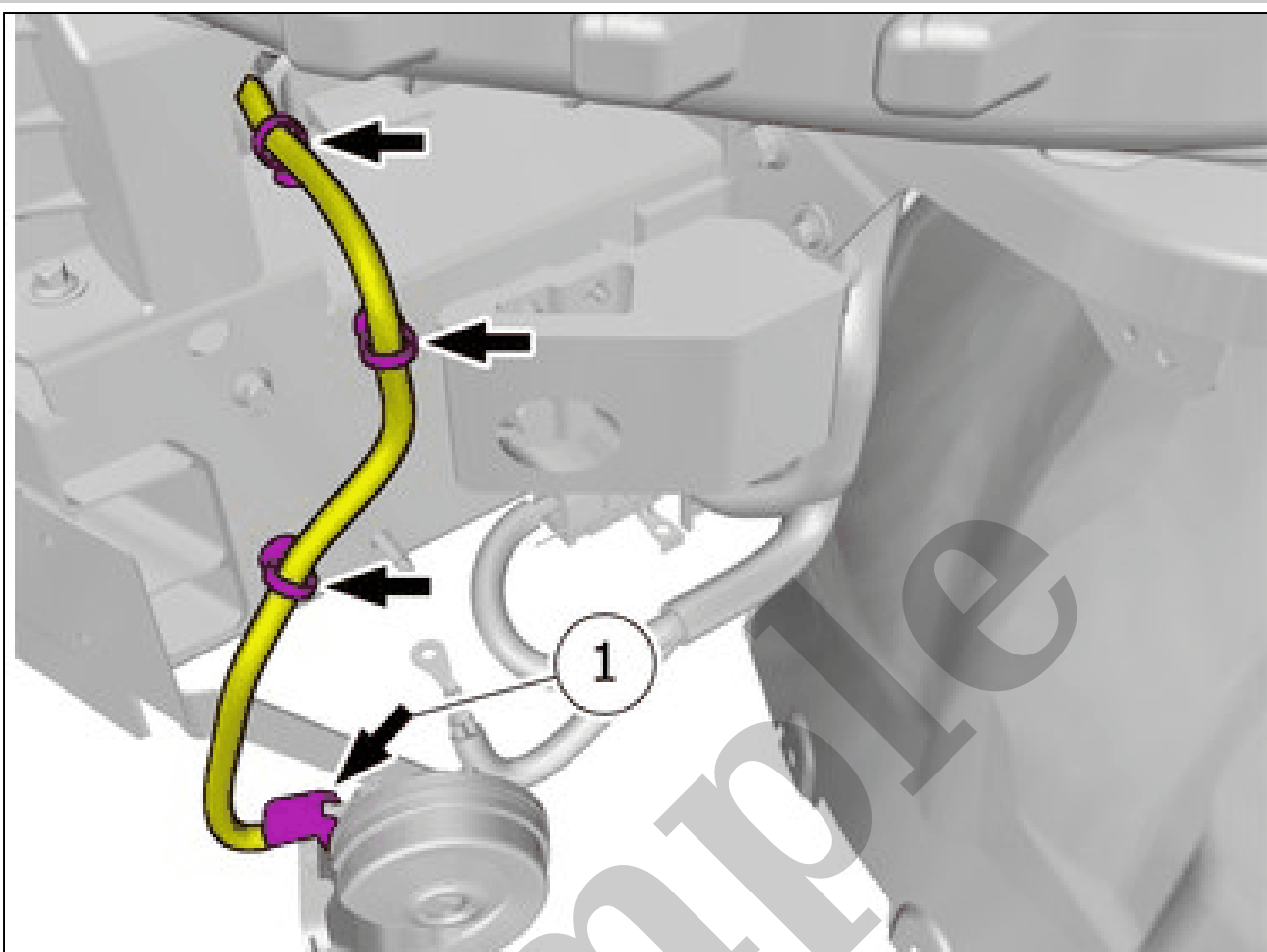
CAUTION: *Make sure that all openings are sealed.*

Remove the nut.
Loosen the marked detail.
Torque: M8, 24Nm



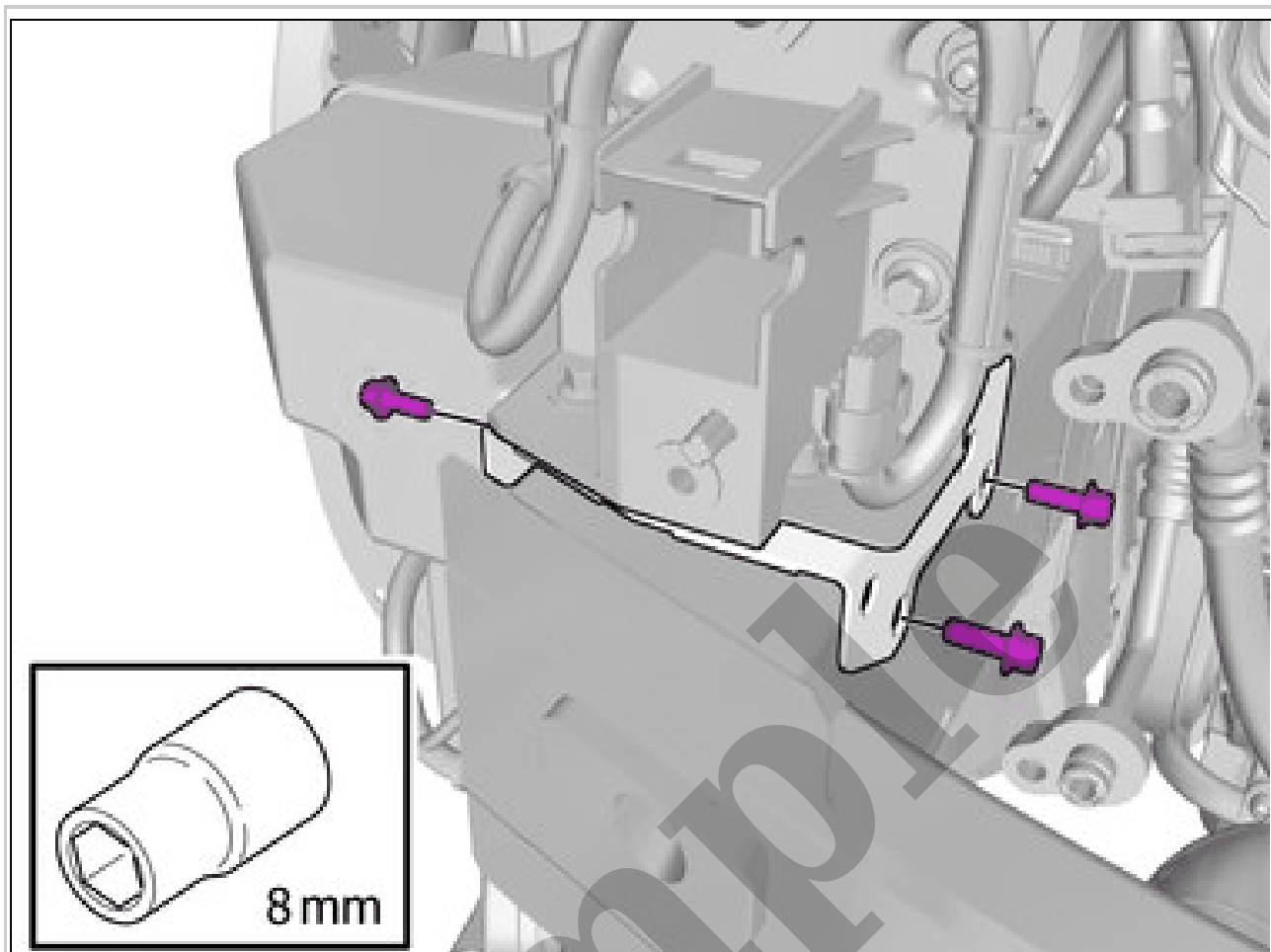
Courtesy of VOLVO CARS CORPORATION

Release the lock.
Undo the hose from the connection.



Courtesy of VOLVO CARS CORPORATION

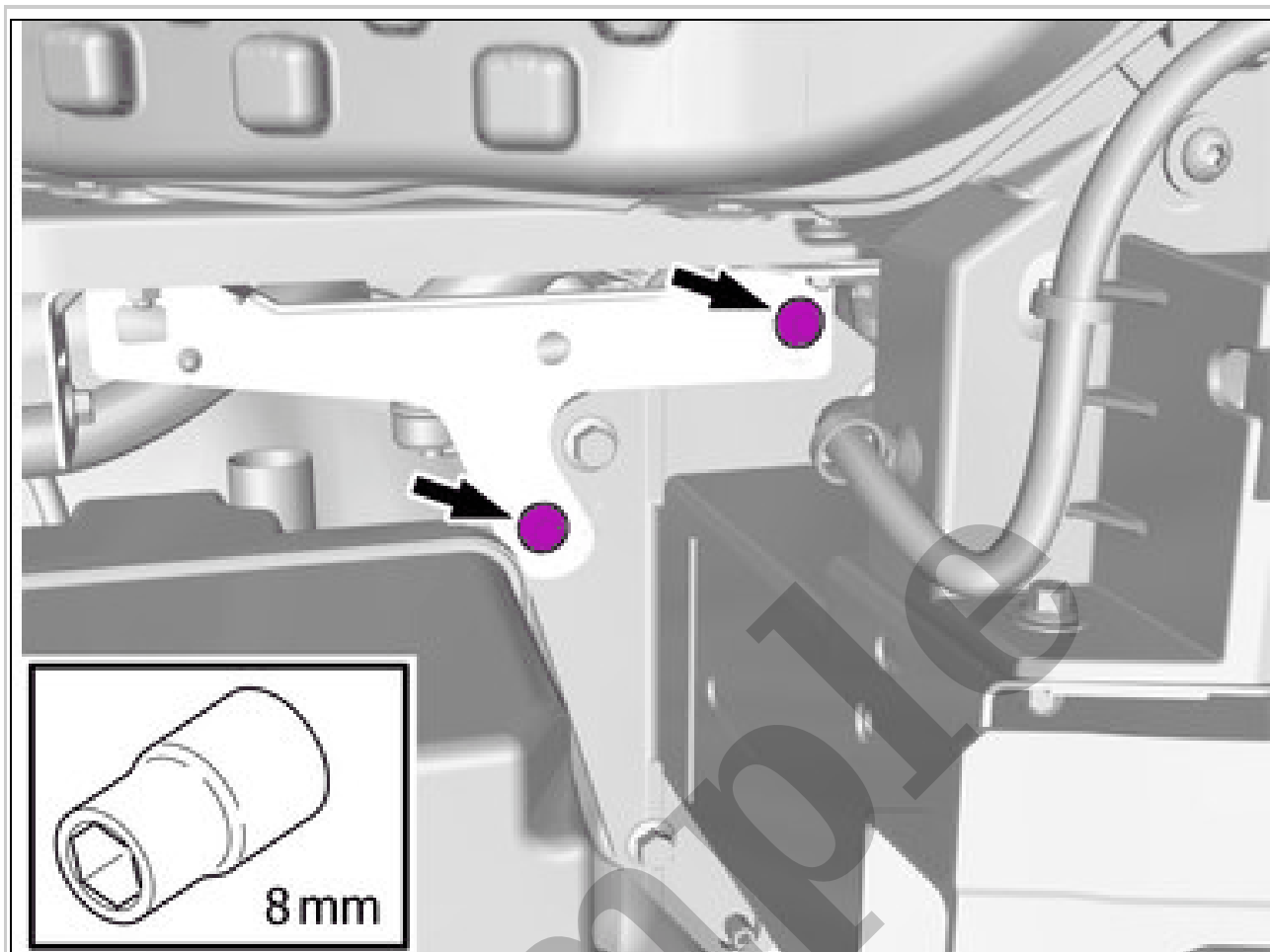
Disconnect the connector.
Remove the cable harness clips.



Courtesy of VOLVO CARS CORPORATION

Remove the screws.

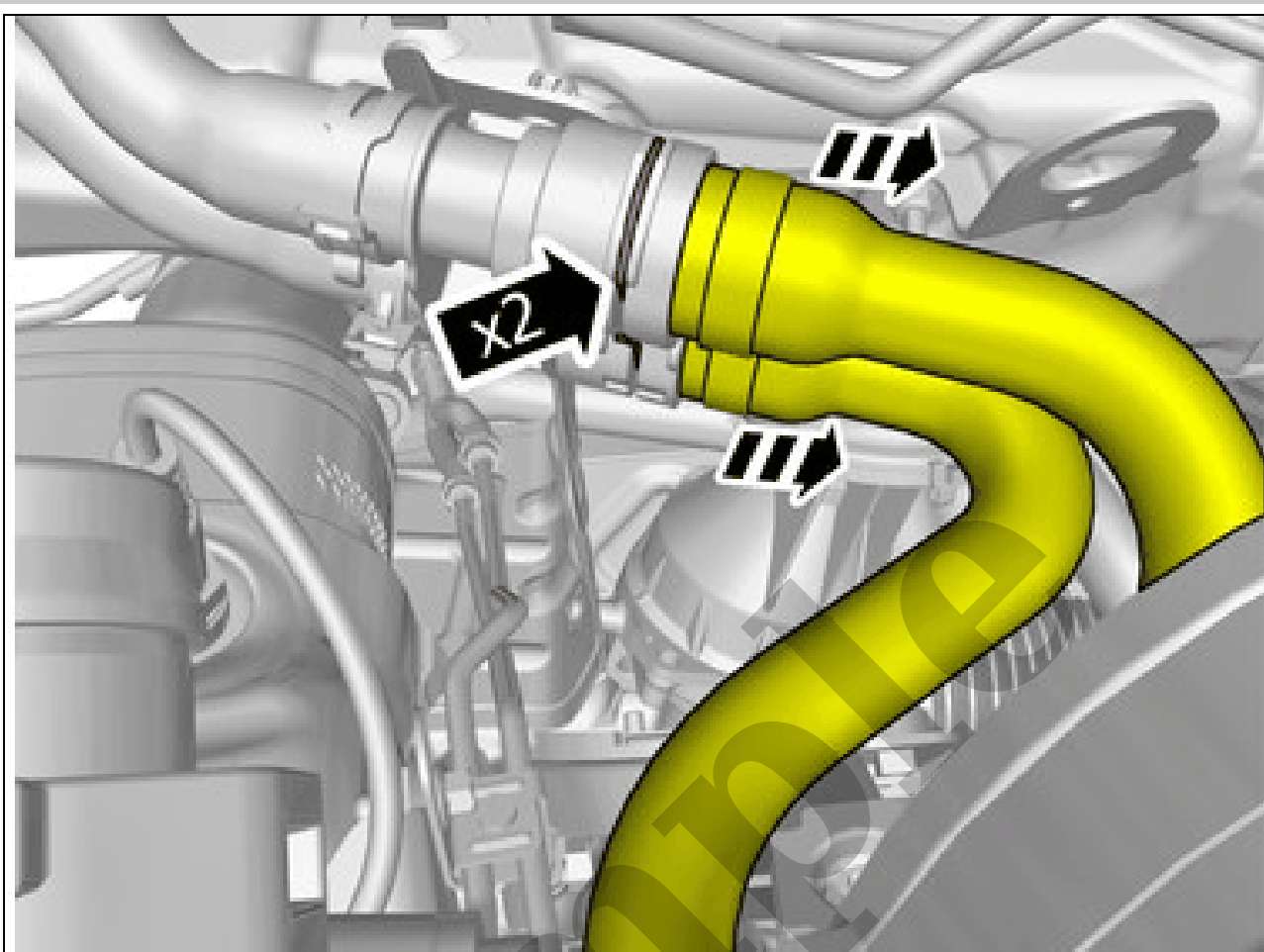
Torque: M6, 10Nm



Courtesy of VOLVO CARS CORPORATION

Remove the screws.

Torque: M6, 10Nm

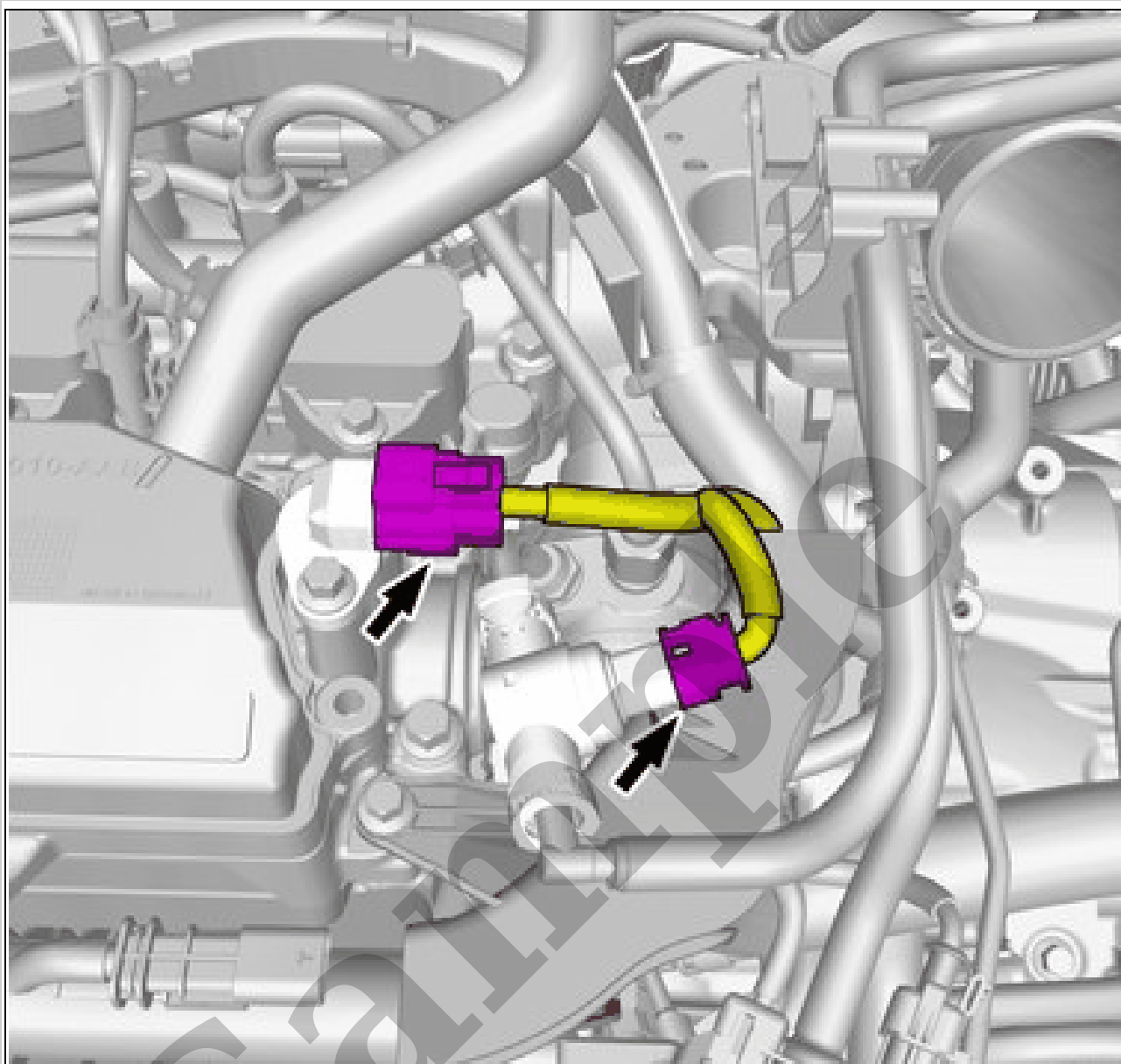


Courtesy of VOLVO CARS CORPORATION

WARNING: *Be prepared to collect escaping fluid.*

Release the locks.

Undo the hoses from the connections.



Courtesy of VOLVO CARS CORPORATION

Disconnect the connectors.