

Your Ultimate Source for OEM Repair Manuals

FactoryManuals.net is a great resource for anyone who wants to save money on repairs by doing their own work. The manuals provide detailed instructions and diagrams that make it easy to understand how to fix a vehicle.

2017 Lexus RX 350 Service and Repair Manual

[Go to manual page](#)

| | | |
|--|---------------------|--------------------------------------|
| Last Modified: 10-07-2024 | 6.11:8.1.0 | Doc ID: RM100000002FIVT |
| Model Year Start: 2024 | Model: GX550 | Prod Date Range: [12/2023 -] |
| Title: SPECIFICATIONS: SEAT: SERVICE DATA; 2024 MY GX550 [12/2023 -] | | |

SERVICE DATA

FRONT SEATBACK HEATER ASSEMBLY LH (for 10 Way Seat Type)

| TESTER CONNECTION | CONDITION | SPECIFIED CONDITION |
|-------------------|--------------------|---------------------|
| 1 - 2 | Always 20°C (68°F) | 3.76 to 4.58 Ω |

FRONT SEATBACK HEATER ASSEMBLY RH (for 10 Way Seat Type)

| TESTER CONNECTION | CONDITION | SPECIFIED CONDITION |
|-------------------|--------------------|---------------------|
| o15-1 - o15-2 | Always 20°C (68°F) | 3.76 to 4.58 Ω |

FRONT SEATBACK HEATER ASSEMBLY LH (for 8 Way Seat Type)

| TESTER CONNECTION | CONDITION | SPECIFIED CONDITION |
|-------------------|--------------------|---------------------|
| 1 - 2 | Always 20°C (68°F) | 3.74 to 4.46 Ω |

FRONT SEATBACK HEATER ASSEMBLY RH (for 8 Way Seat Type)

| TESTER CONNECTION | CONDITION | SPECIFIED CONDITION |
|-------------------|--------------------|---------------------|
| o15-1 - o15-2 | Always 20°C (68°F) | 3.74 to 4.46 Ω |

REAR NO. 1 SEATBACK HEATER ASSEMBLY LH (for Single-Passenger Seat)



[Click Location & Routing\(c24\).](#)
[Click Connector\(c24\).](#)

| TESTER CONNECTION | CONDITION | SPECIFIED CONDITION |
|-------------------|--------------------|---------------------|
| c24-1 - c24-2 | Always 20°C (68°F) | 2.97 to 3.63 Ω |

REAR NO. 1 SEATBACK HEATER ASSEMBLY RH (for Single-Passenger Seat)



[Click Location & Routing\(c8\).](#)
[Click Connector\(c8\).](#)

| TESTER CONNECTION | CONDITION | SPECIFIED CONDITION |
|-------------------|--------------------|---------------------|
| c8-1 - c8-2 | Always 20°C (68°F) | 2.97 to 3.63 Ω |

REAR NO. 1 SEATBACK HEATER ASSEMBLY RH (for 2-Passenger Seat)



[Click Location & Routing\(c8\).](#)
[Click Connector\(c8\).](#)

| TESTER CONNECTION | CONDITION | SPECIFIED CONDITION |
|-------------------|--------------------|------------------------|
| c2-4 - c2-5 | Always 20°C (68°F) | 3.37 to 4.11 Ω |
| c2-6 - c2-7 | 25 °C (77 °F) | 9.9 to 10.1 k Ω |

REAR NO. 1 SEAT CUSHION HEATER ASSEMBLY RH (for 2-Passenger Seat)

[Click Location & Routing\(c2\).](#)

[Click Connector\(c2\).](#)

| TESTER CONNECTION | CONDITION | SPECIFIED CONDITION |
|-------------------|--------------------|------------------------|
| c2-1 - c2-4 | Always 20°C (68°F) | 3.37 to 4.11 Ω |
| c2-4 - c2-5 | Always 20°C (68°F) | 3.37 to 4.11 Ω |
| c2-6 - c2-7 | 25 °C (77 °F) | 9.9 to 10.1 k Ω |

Sample

| RM TITLE | PART TIGHTENED | N*M | KGF*CM | FT.*LBF | IN.*LBF |
|----------|--|-----|--------|---------|---------|
| | Rear No. 3 seat cushion lock striker sub-assembly x Vehicle body | 37 | 377 | 27 | |
| | Rear No. 4 seat cushion lock striker sub-assembly x Vehicle body | 37 | 377 | 27 | |

Sample

| | | |
|--|---------------------|--------------------------------------|
| Last Modified: 10-07-2024 | 6.11:8.1.0 | Doc ID: RM100000002FIXU |
| Model Year Start: 2024 | Model: GX550 | Prod Date Range: [12/2023 -] |
| Title: SEAT BELT: FRONT SEAT OUTER BELT ASSEMBLY: ON-VEHICLE INSPECTION; 2024 MY GX550 [12/2023 -] | | |

ON-VEHICLE INSPECTION

CAUTION / NOTICE / HINT

CAUTION:

Be sure to correctly follow the removal and installation procedures for the front seat outer belt assembly.

PROCEDURE

1. INSPECT FRONT SEAT OUTER BELT ASSEMBLY (for Vehicle not Involved in Collision)

(a) Perform a diagnostic system check.

HINT:

Refer to the GTS operator's manual for further details.

(b) Visually check for defects with the front seat outer belt assembly installed to the vehicle.

(1) The defects to be checked are as follows:

- Cuts on the front seat outer belt assembly
- Small cracks on the front seat outer belt assembly
- Significant discoloration on the front seat outer belt assembly

OK:

No defects are found.

HINT:

If any defects are found, replace the front seat outer belt assembly with a new one.

2. INSPECT FRONT SEAT OUTER BELT ASSEMBLY (for Vehicle Involved in Collision)

(a) Perform a diagnostic system check.

HINT:

Refer to the GTS operator's manual for further details.

(b) Visually check for defects with the front seat outer belt assembly removed from the vehicle.

(1) The defects to be checked are as follows:

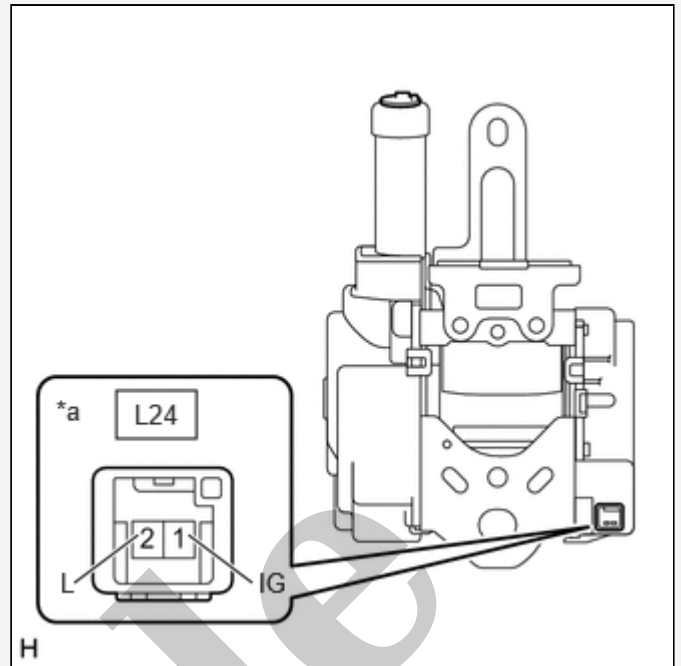
- Cuts on the front seat outer belt assembly
- Small cracks on the front seat outer belt assembly
- Significant discoloration on the front seat outer belt assembly
- Cracks or other damage on the connector

OK:

No defects are found.

HINT:

If any defects are found, replace the front seat outer belt assembly with a new one.



| | |
|----|--|
| *a | Component without harness connected (Front Seat Outer Belt Assembly LH) |
|----|--|

- (2) Pull out the seat belt again, disconnect the negative (-) lead of the battery and allow the seat belt to retract. Listen to the operating sound again and check that the operating sound volume has increased.
If the result is not as specified, replace the front seat outer belt assembly LH.

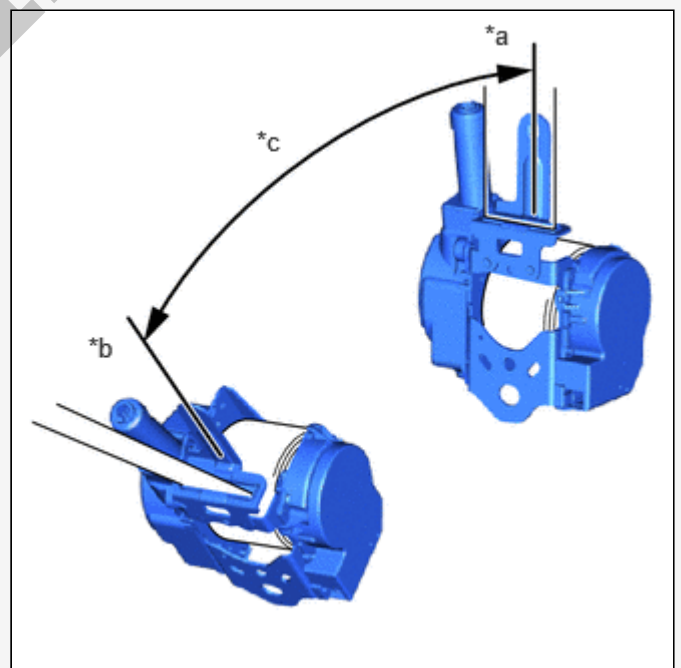
- (b) Before installing the front seat outer belt assembly LH, check the ELR function.

NOTICE:

Do not disassemble the retractor.

- (1) When the inclination of the retractor is 15° or less, check that the belt can be pulled from the retractor. When the inclination of the retractor is over 45° , check that the belt locks.

If the result is not as specified, replace the front seat outer belt assembly LH.



| | |
|----|------------|
| *a | Unlock |
| *b | Lock |
| *c | 45° |

2. INSPECT FRONT SEAT OUTER BELT ASSEMBLY RH

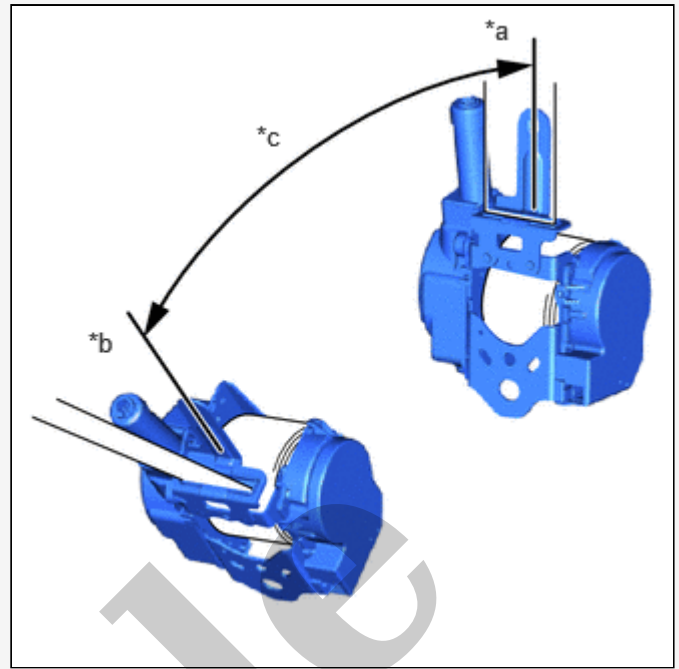
- (b) Before installing the front seat outer belt assembly RH, check the ELR function.

NOTICE:

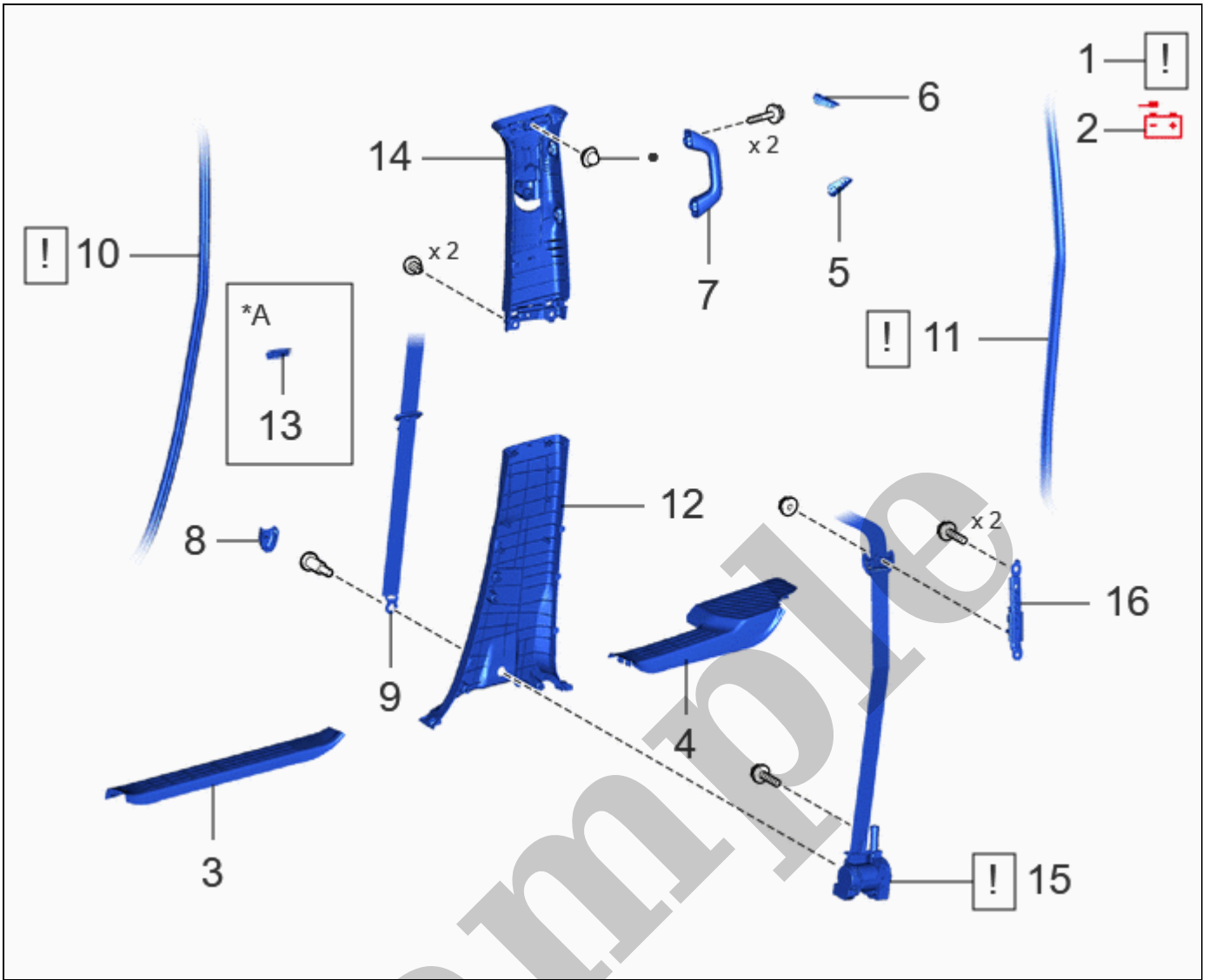
Do not disassemble the retractor.

- (1) When the inclination of the retractor is 15° or less, check that the belt can be pulled from the retractor. When the inclination of the retractor is over 45°, check that the belt locks.

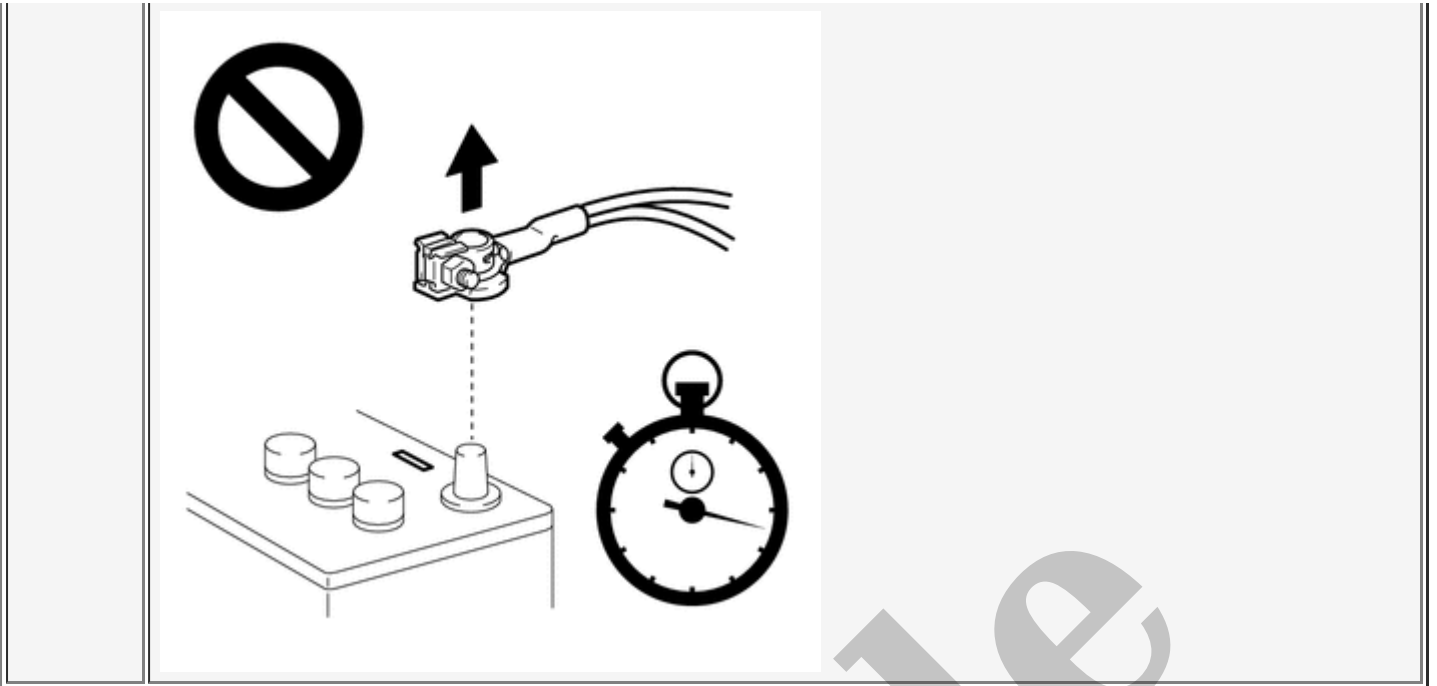
If the result is not as specified, replace the front seat outer belt assembly RH.



| | |
|----|--------|
| *a | Unlock |
| *b | Lock |
| *c | 45° |



| PROCEDURE | | PART NAME CODE | | | |
|-----------|---|----------------|------|---|---|
| 1 | PRECAUTION | - | INFO | - | - |
| 2 | DISCONNECT CABLE FROM NEGATIVE BATTERY TERMINAL | - | INFO | - | - |
| 3 | DOOR SCUFF PLATE ASSEMBLY LH | 67920 | - | - | - |
| 4 | REAR DOOR SCUFF PLATE LH | 67918E | - | - | - |
| 5 | NO. 2 ASSIST GRIP PLUG LH | 74638 | - | - | - |
| 6 | NO. 2 ASSIST GRIP PLUG RH | 74637 | - | - | - |
| 7 | PILLAR ASSIST GRIP ASSEMBLY LH | 74680C | - | - | - |
| 8 | OUTER LAP BELT ANCHOR COVER | 73233 | - | - | - |
| 9 | FRONT SEAT OUTER BELT ASSEMBLY LH (LAP BELT ANCHOR) | 73220 | - | - | - |
| 10 | FRONT DOOR OPENING TRIM WEATHERSTRIP LH | 62312B | INFO | - | - |
| 11 | REAR DOOR OPENING TRIM WEATHERSTRIP LH | 62332C | INFO | - | - |



Click here [INFO](#)

3. REMOVE DOOR SCUFF PLATE ASSEMBLY LH

Click here [INFO](#)

4. REMOVE REAR DOOR SCUFF PLATE LH

Click here [INFO](#)

5. REMOVE NO. 2 ASSIST GRIP PLUG LH

Click here [INFO](#)

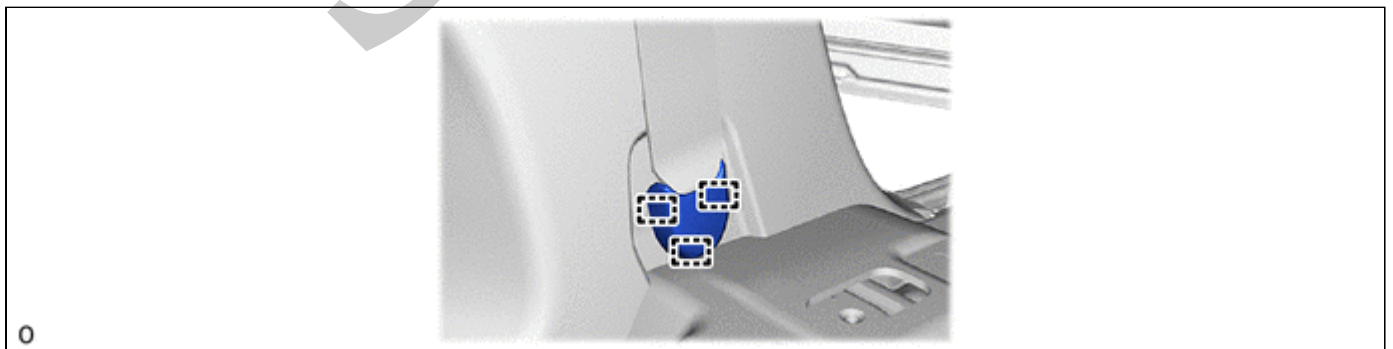
6. REMOVE NO. 2 ASSIST GRIP PLUG RH

(a) Use the same procedure described for the No. 2 assist grip plug LH.

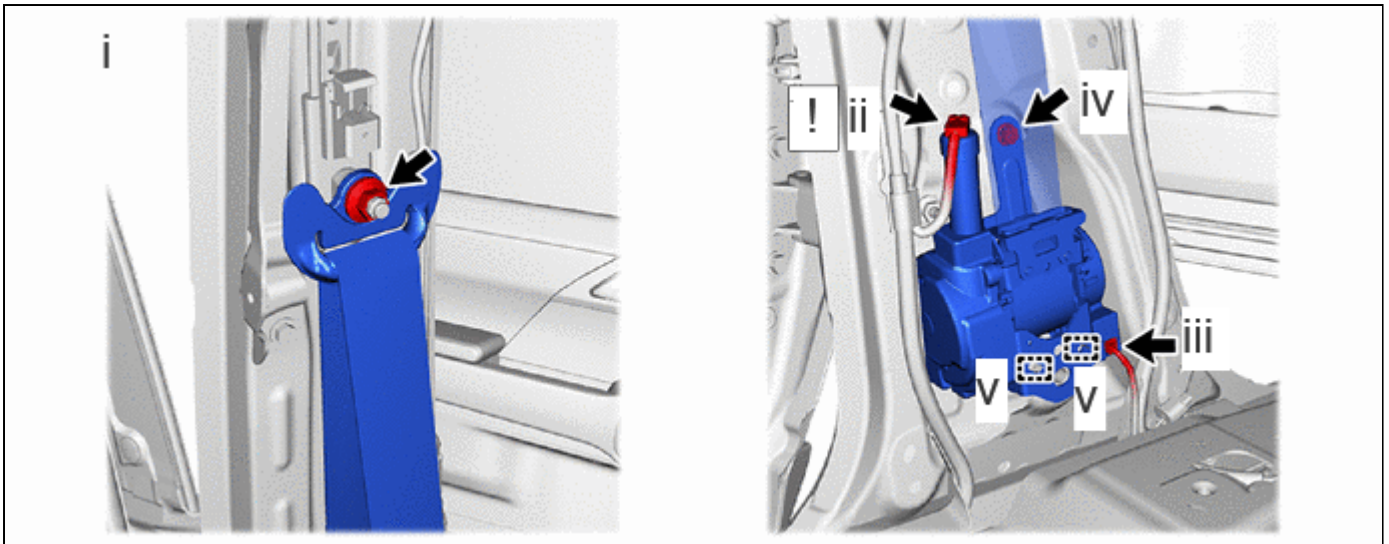
7. REMOVE PILLAR ASSIST GRIP ASSEMBLY LH

Click here [INFO](#)

8. REMOVE OUTER LAP BELT ANCHOR COVER



9. REMOVE FRONT SEAT OUTER BELT ASSEMBLY LH (LAP BELT ANCHOR)



- (1) Remove the nut and shoulder anchor of the front seat outer belt assembly LH.
- (2) Disconnect the pretensioner connector.

HINT:

Refer to [How to Connect or Disconnect Airbag Connector](#):

[Click here](#) INFO

- (3) Disconnect the tension reducer connector.
- (4) Remove the bolt.
- (5) Detach the guide and remove the front seat outer belt assembly LH.

16. REMOVE FRONT SHOULDER BELT ANCHOR ADJUSTER ASSEMBLY**HINT:**

Perform this procedure when replacing the front shoulder belt anchor adjuster assembly.

