

Your Ultimate Source for OEM Repair Manuals

FactoryManuals.net is a great resource for anyone who wants to save money on repairs by doing their own work. The manuals provide detailed instructions and diagrams that make it easy to understand how to fix a vehicle.

2017 JEEP Renegade OEM Service and Repair Workshop Manual

[Go to manual page](#)

TORQUE SPECIFICATIONS - TRANSMISSION - 8HP75

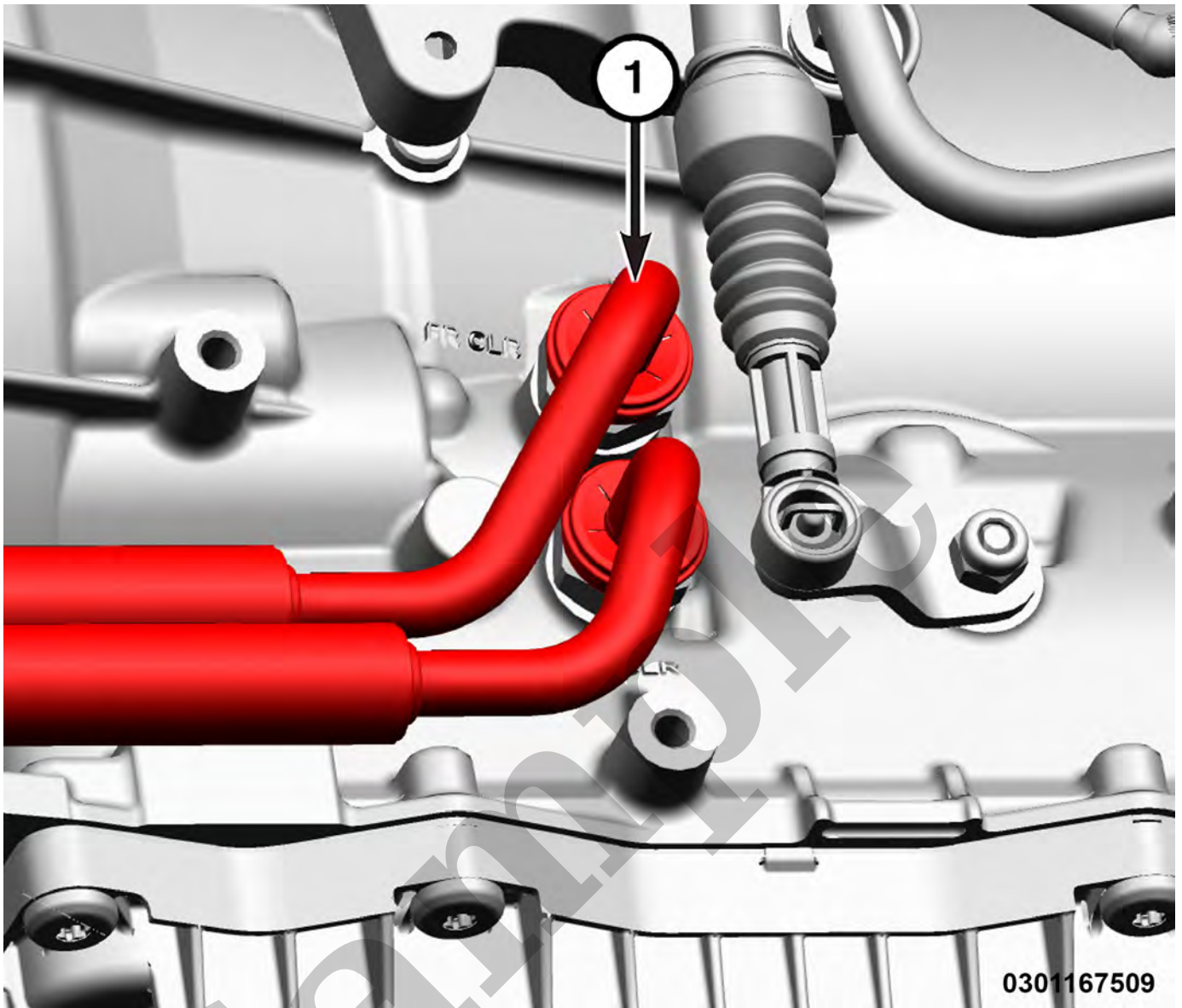
DESCRIPTION	SPECIFICATION	COMMENT
Bellhousing Bolt	53 N·m (39 Ft. Lbs.)	—
Bellhousing to Engine Oil Pan Bolts	45 N·m (33 Ft. Lbs.)	—
Flexplate to Crankshaft Bolts	95 N·m (70 Ft. Lbs.)	Do not reuse these fasteners. If removed, a NEW fastener must be installed and tightened to specifications.
Hydraulic Impulse Solenoid (HIS) Bolts	8 N·m (71 In. Lbs.)	—
Manual Park Release Cable Bracket to Transmission Bolts	20 N·m (15 Ft. Lbs.)	—
Manual Park Release Lever Shaft Nut	20 N·m (15 Ft. Lbs.)	—
Manual Park Release Handle to Body Nuts	5 N·m (44 In. Lbs.)	—
Output Speed Sensor Bolt	9 N·m (80 In. Lbs.)	—
Oil Cooler Line Bolt	10 N·m (89 In. Lbs.)	—
Park Pawl Lock Rod Guide Plate Bolt	10 N·m (89 In. Lbs.)	—
Park Pawl Shaft Plug	35 N·m (26 Ft. Lbs.)	—
Starter Cover Lower Bolt	25 N·m (18 Ft. Lbs.)	—
Shifter Control Support Nuts	10 N·m (89 In. Lbs.)	—

- 21 - Transmission and Transfer Case / Automatic - 8P75PH / Removal and Installation

List 2

- 21 - Transmission and Transfer Case / Automatic - 8HP50/850RE / Standard Procedure
- 21 - Transmission and Transfer Case / Automatic - 8HP75 / Standard Procedure
- 21 - Transmission and Transfer Case / Automatic - 8P75PH / Standard Procedure

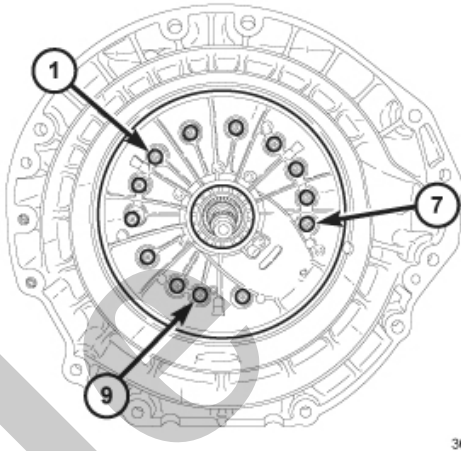
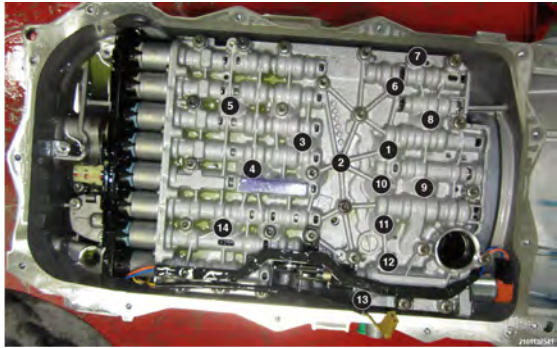
Sample



1 - Transmission Oil Cooler Lines

5. Using the

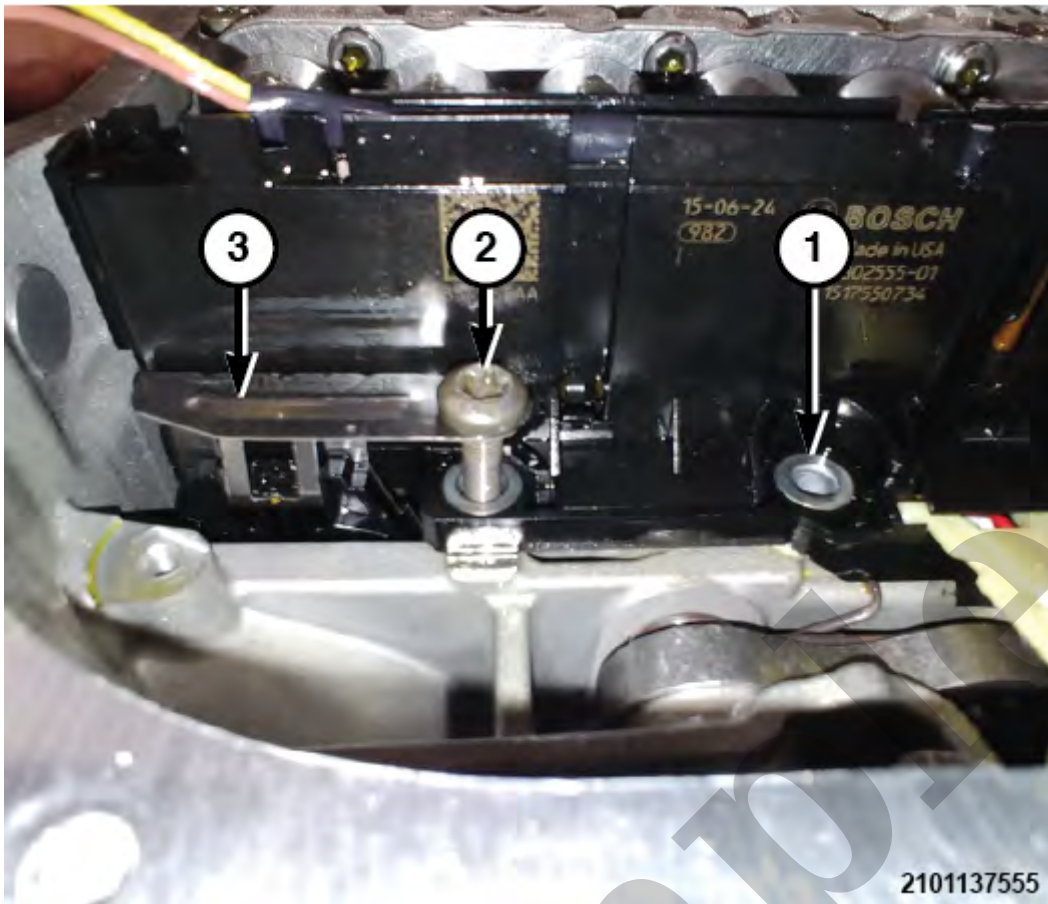
Disconnect Tool

DESCRIPTION	SPECIFICATION	COMMENT
Transmission Oil Pump Assembly to Case Bolts	<p>Torque Procedure:</p> <ol style="list-style-type: none"> 1. In order to seat the oil pump cover properly, pre tighten bolts one, seven and nine to 6 N·m (53 in. lb.) . 2. Working in a clockwise pattern, beginning with number one, tighten to 10 N·m (89 in. lb.) . 3. Working in a clockwise pattern, beginning with number one, tighten an 90° . 	<p>If removed, NEW fasteners must be installed and tightened to specifications.</p>  <p>3647886</p>
Transmission Oil Pump Housing to Cover Bolt	5 N·m (44 In. Lbs.) + 45°	If removed, NEW fasteners must be installed and tightened to specifications.
Valve Body Bolt	8 N·m (71 In. Lbs.)	<p>Tightening Sequence</p> 

Refer To List:

List 1

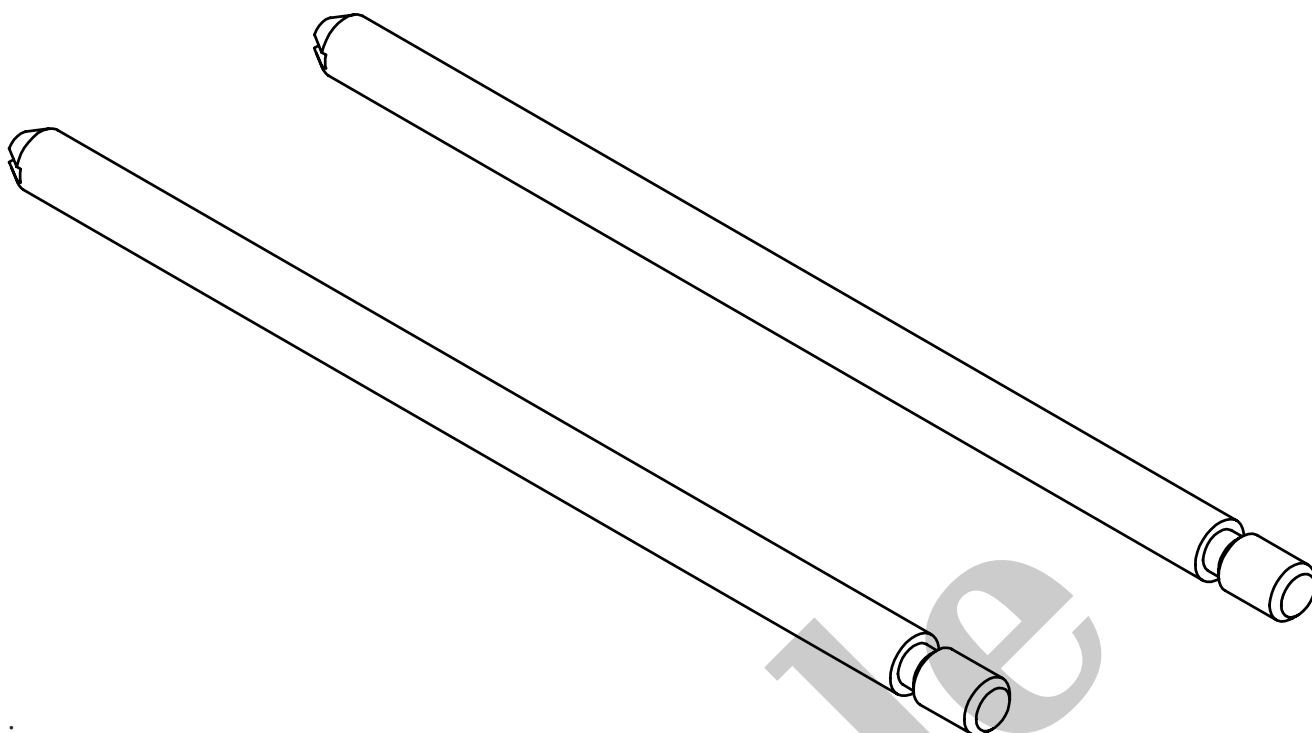
- [09 - Engine, 2.0L / Air Intake System / TUBE, Intake Air / Removal and Installation](#)
- [09 - Engine, 3.6L / Air Intake System / TUBE, Intake Air / Removal and Installation](#)
- [09 - Engine, 5.7L / Air Intake System / TUBE, Intake Air / Removal and Installation](#)



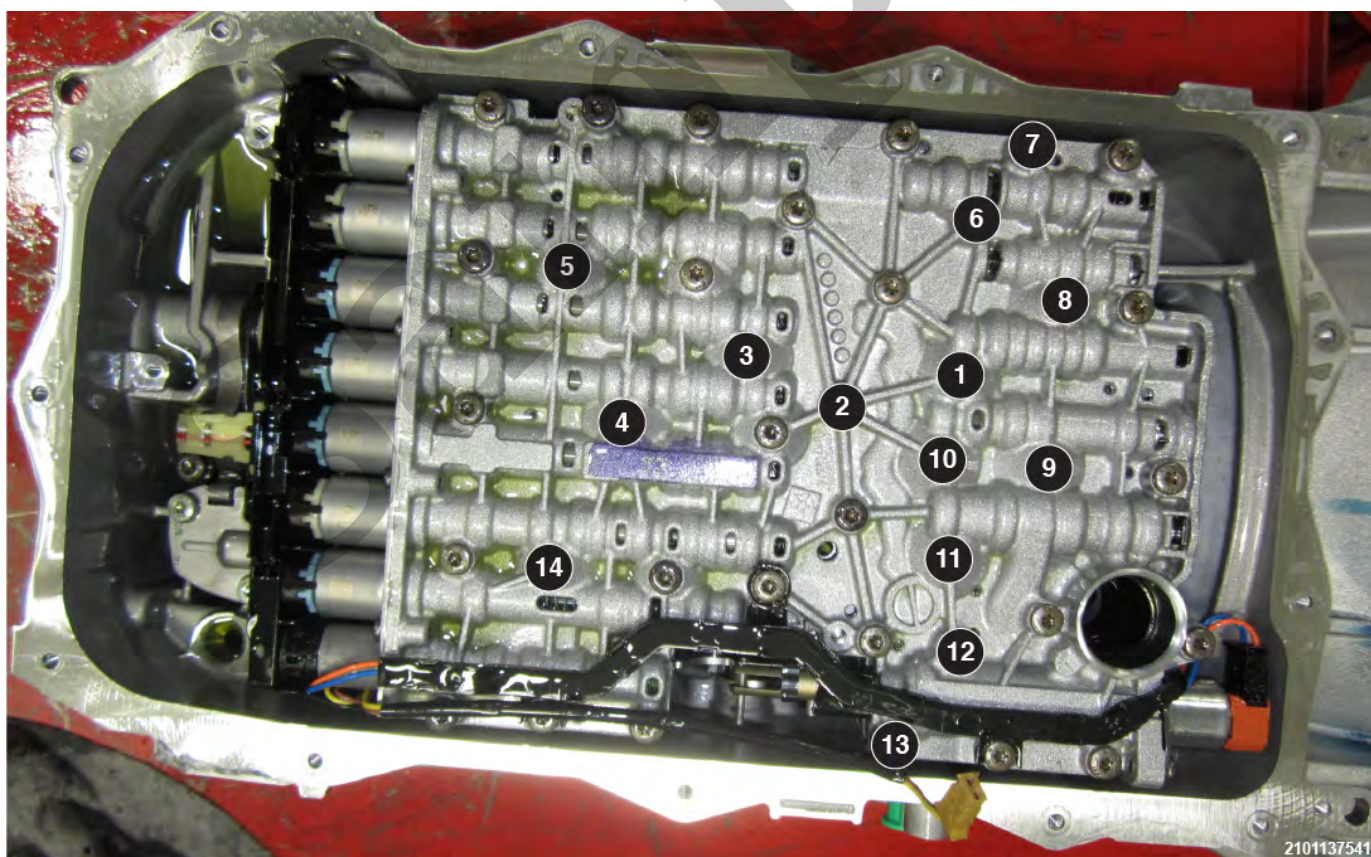
1 - Valve Body End Retainer Bolt
2 - Valve Body End Retainer Bolt
3 - Electrical Connector Lock

9. Remove the valve body assembly end retainer bolts.

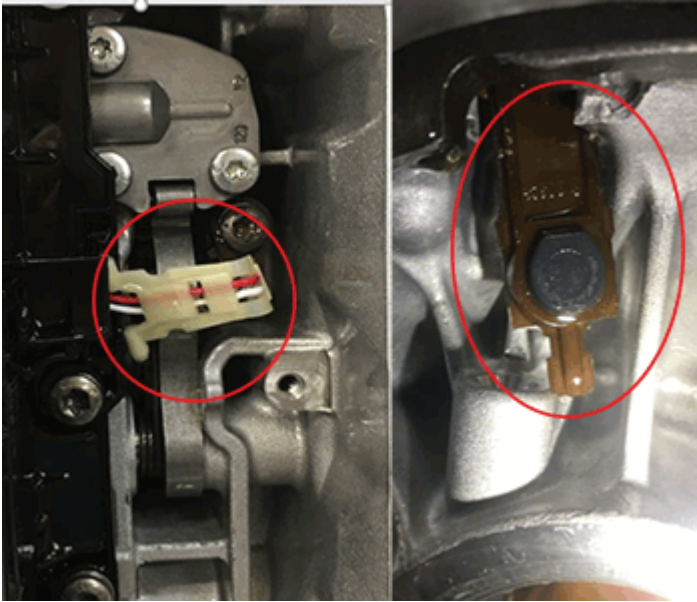
10. Lift the electrical connector lock to release the internal harness end from inside the transmission for valve body assembly removal.



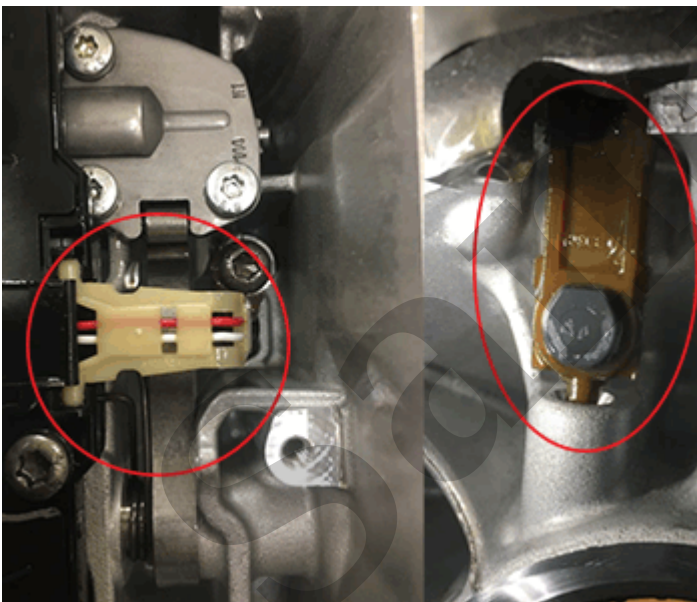
14. Use an appropriate tool on one of the alignment pins to assist in holding the valve body in position while removing the remaining fasteners.



15. Remove remaining valve body assembly retaining bolts in the order shown.



- When installing the output speed sensor into the case, take care to position the output speed sensor guide pin as shown in the step below or **DAMAGE** to the sensor may result. This is the **INCORRECT** alignment of the pin.

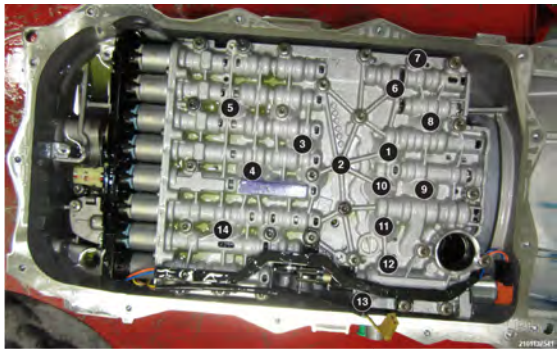


- This is the **CORRECT** installation and pin alignment.
- The valve body bolts must be tightened in the sequence shown in the torque table below.

NOTE

If the transmission was contaminated or the gasket is damaged a NEW pan and filter assembly must be installed.

- Install the transmission fluid/filter pan assembly.

DESCRIPTION	SPECIFICATION	COMMENT
		

Refer To List:

List 1

- [21 - Transmission and Transfer Case / Automatic - 8HP50/850RE / Standard Procedure](#)
- [21 - Transmission and Transfer Case / Automatic - 8HP75 / Standard Procedure](#)
- [21 - Transmission and Transfer Case / Automatic - 8P75PH / Standard Procedure](#)

List 2

- [28 - DTC-Based Diagnostics / MODULE, Transmission Control \(TCM\), 8HP50/850RE / Standard Procedure](#)
- [28 - DTC-Based Diagnostics / MODULE, Transmission Control \(TCM\), 8HP75 / Standard Procedure](#)
- [28 - DTC-Based Diagnostics / MODULE, Transmission Control \(TCM\), 8P75PH / Standard Procedure](#)

DESCRIPTION	SPECIFICATION	COMMENT
Blocker to Transmission Bolts	48 N·m (35 Ft. Lbs.)	—
Coolant Hose Bracket to Transmission Nut	8 N·m (71 In. Lbs.)	—
Engine Block to Bellhousing Bolt	48 N·m (35 Ft. Lbs.)	—
Engine Oil Pan to Bellhousing Bolt	50 N·m (37 Ft. Lbs.)	—
High Voltage Cable Bracket to Transmission Bolts	8 N·m (71 In. Lbs.)	—
Integrated Electric Oil Pump (IEP) Bolts	8 N·m (71 In. Lbs.)	—
Manual Park Release Cable Bracket to Transmission Bolts	20 N·m (15 Ft. Lbs.)	—
MGU Harness Trough to Transmission Bolt	5 N·m (44 In. Lbs.)	—
Output Speed Sensor Bolt	8 N·m (71 In. Lbs.)	—
P2 Motor Temperature Sensor	11 N·m (8 Ft. Lbs.)	—
Park Pawl Lock Rod Guide Plate Bolt	10 N·m (89 In. Lbs.)	—
Park Pawl Shaft Plug	35 N·m (26 Ft. Lbs.)	—