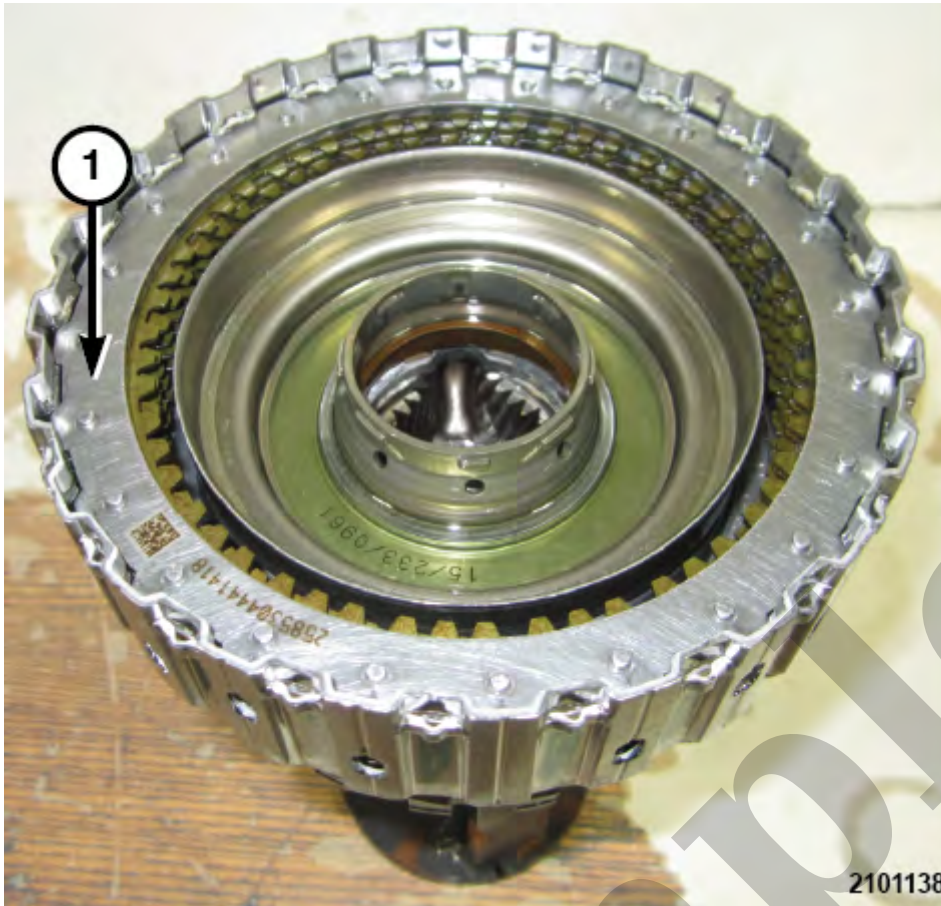


Your Ultimate Source for OEM Repair Manuals

FactoryManuals.net is a great resource for anyone who wants to save money on repairs by doing their own work. The manuals provide detailed instructions and diagrams that make it easy to understand how to fix a vehicle.

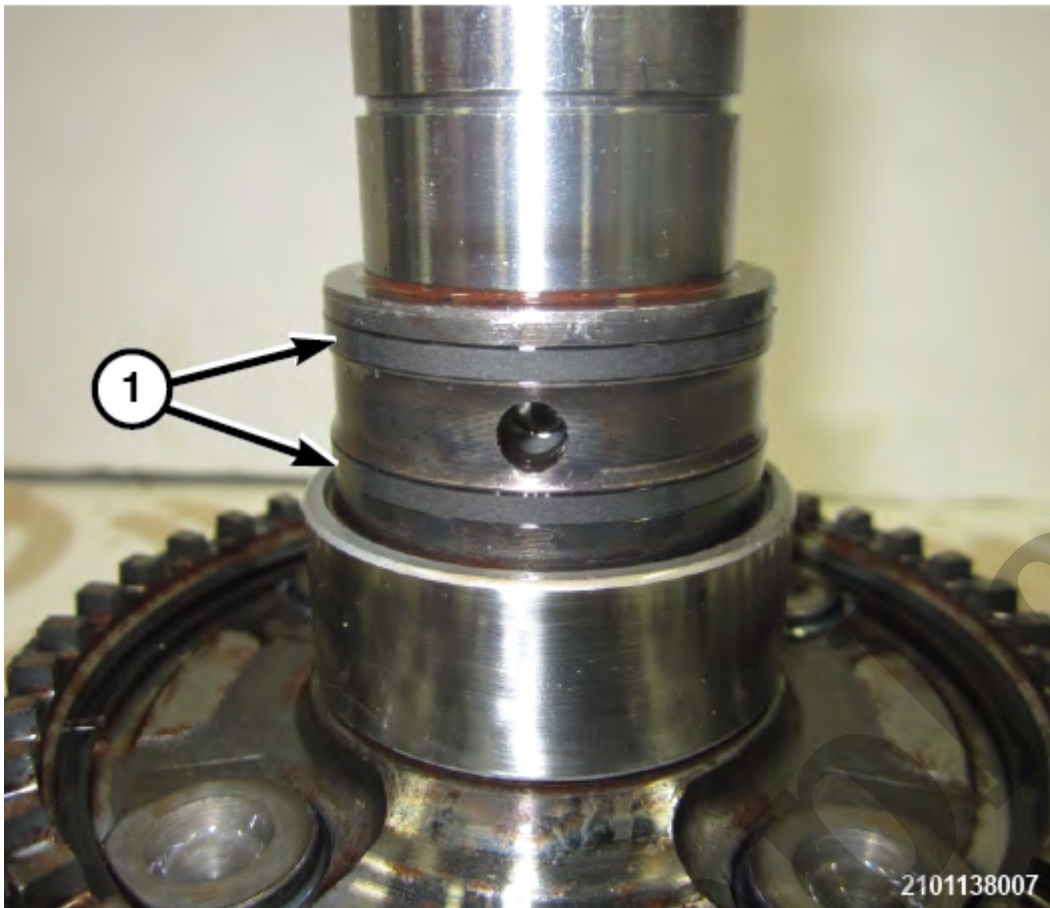
2017 JEEP Cherokee OEM Service and Repair Workshop Manual

[Go to manual page](#)



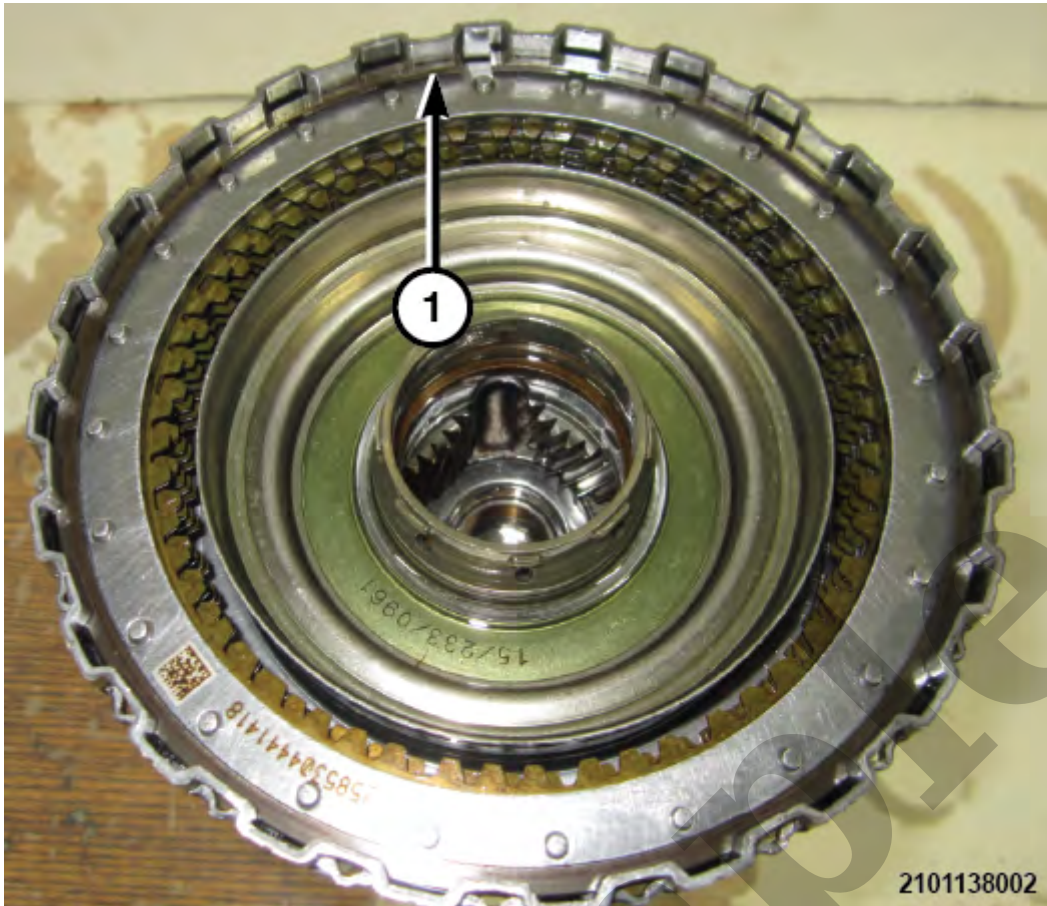
1 - Clutch D Backing Plate

7. Remove the Clutch D backing plate.



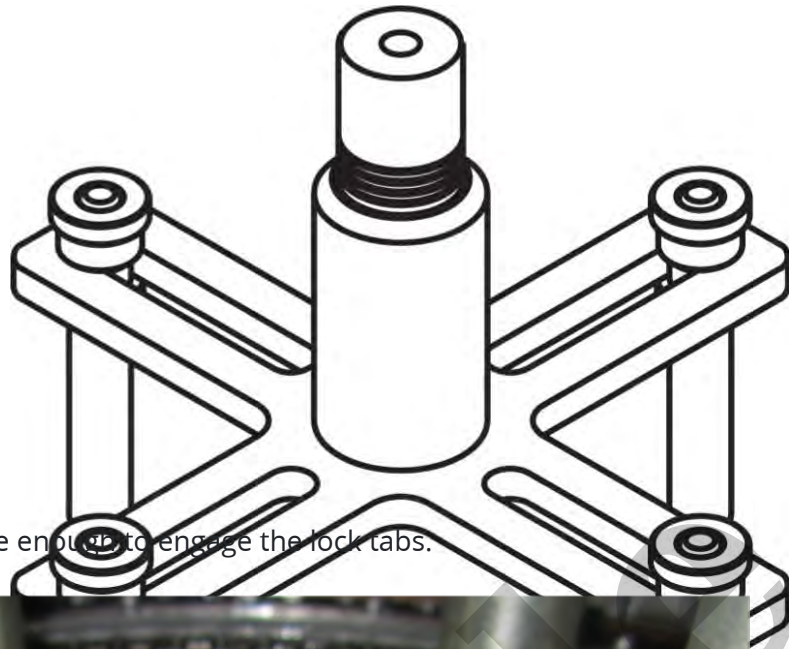
1 - Clutch D Carrier Seal Rings

1. Install the Clutch D housing seal rings.

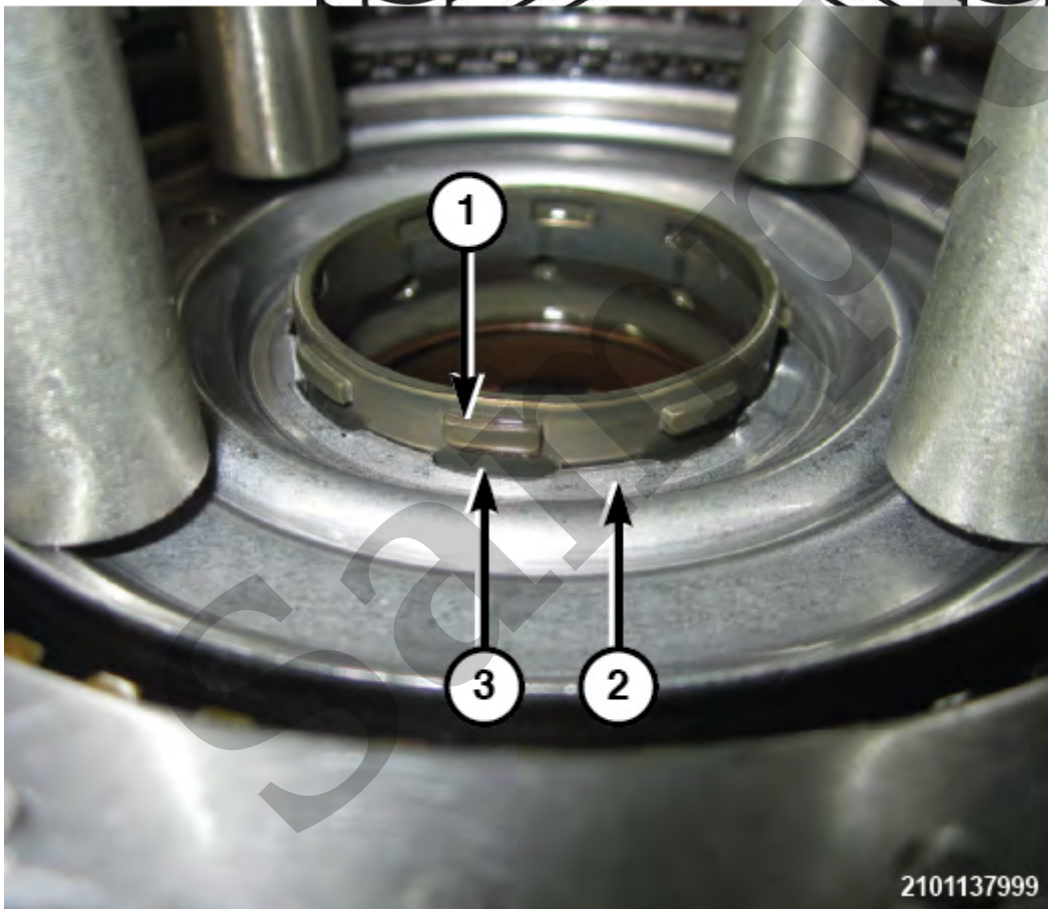


1 - Clutch D Selective Snap Ring

8. Install the proper selective snap ring onto the Clutch D housing.



, compress the oil baffle enough to engage the lock tabs.



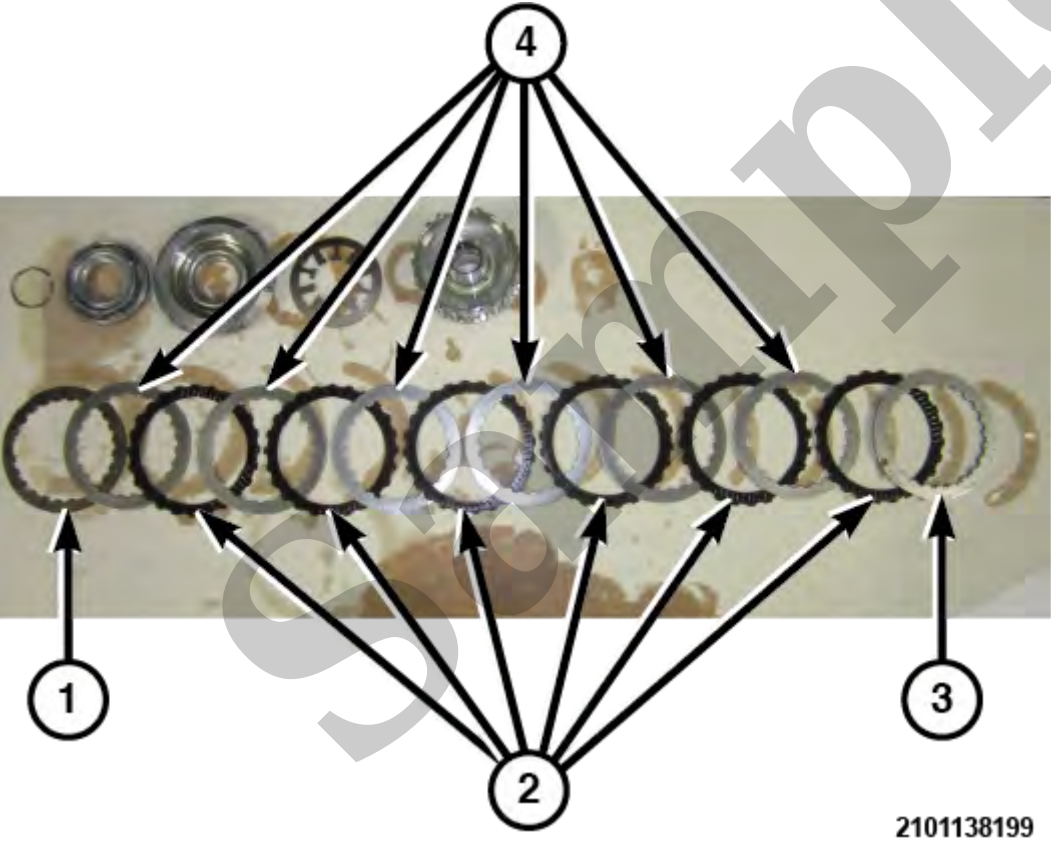
1 - Clutch D Hub

2 - Oil Baffle

3 - Tabs

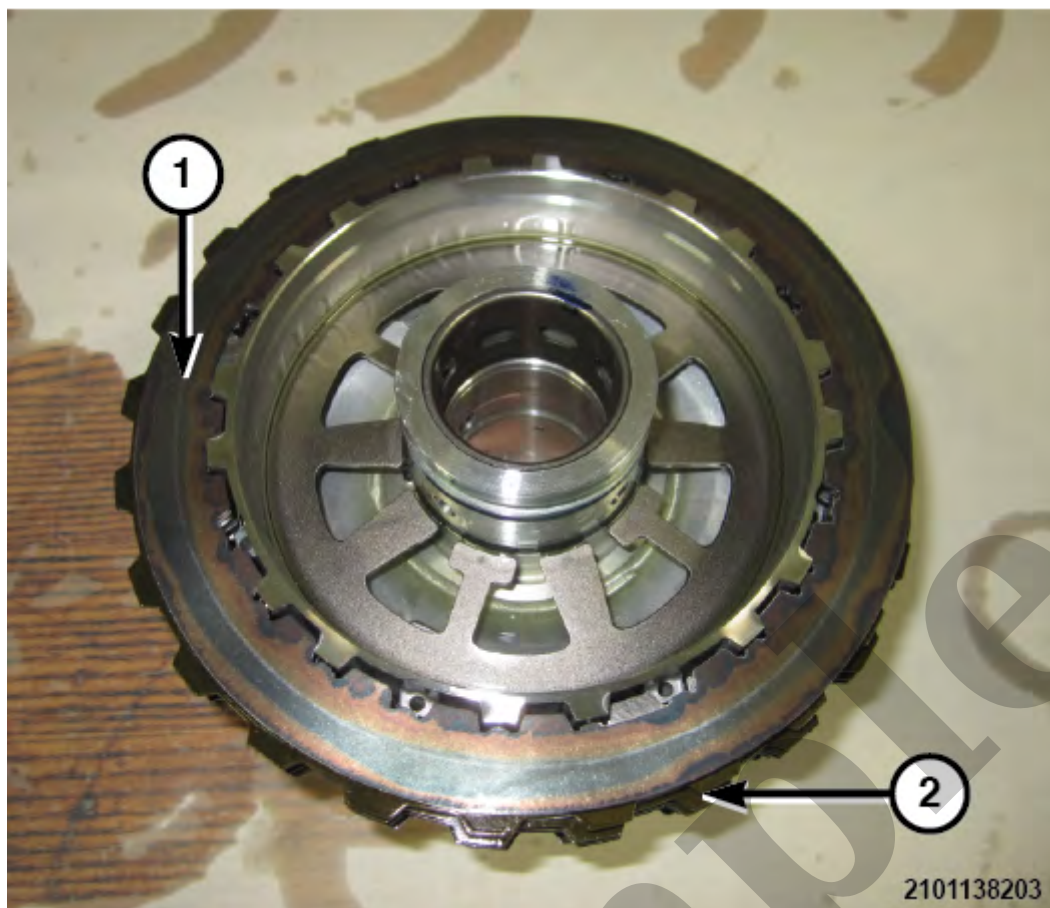
4.5 mm	0.177 in.
4.2 mm	0.165 in.
3.9 mm	0.153 in.
3.6 mm	0.141 in.
3.3 mm	0.129 in.
3.0 mm	0.118 in.

DISASSEMBLY



2101138199

1 - Wave Plate
2 - Friction Plates
3 - Backing Plate
4 - Steel Plates



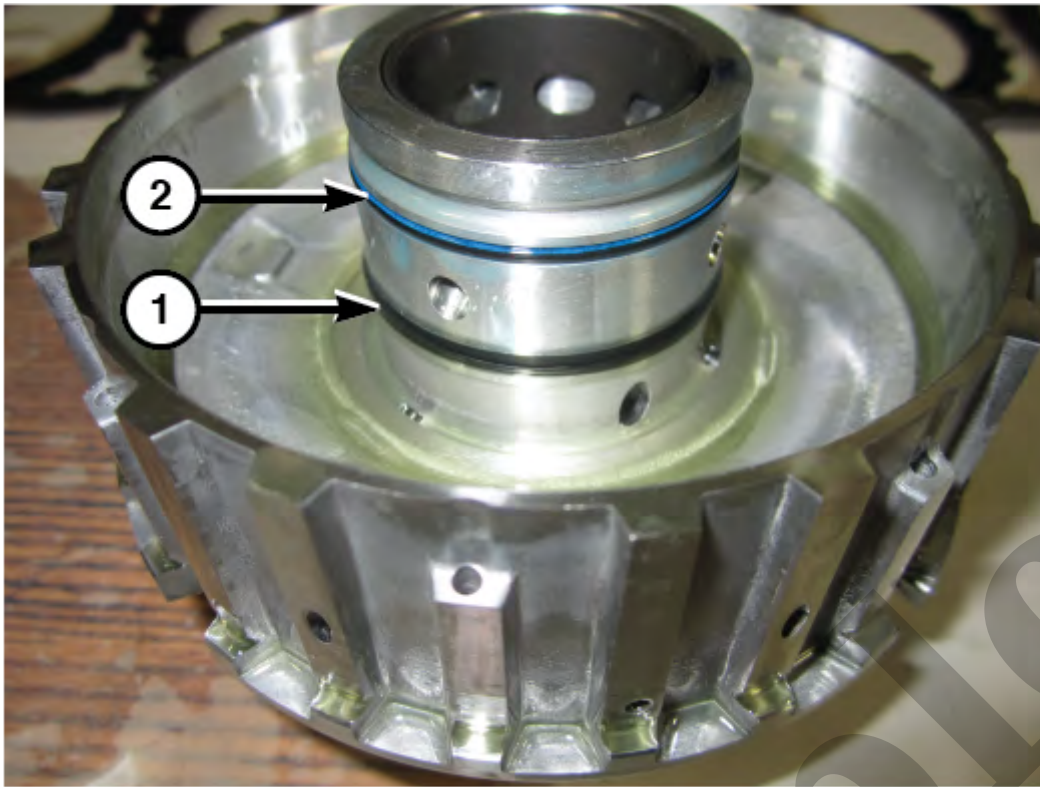
1 - Clutch E Wave Plate

2 - Clutch E Friction and Steel Plates

NOTE

Pay attention to the orientation of the plates.

5. Remove the Clutch E wave plate and the friction and steel plates.



2101138206

1 - Clutch E Seal

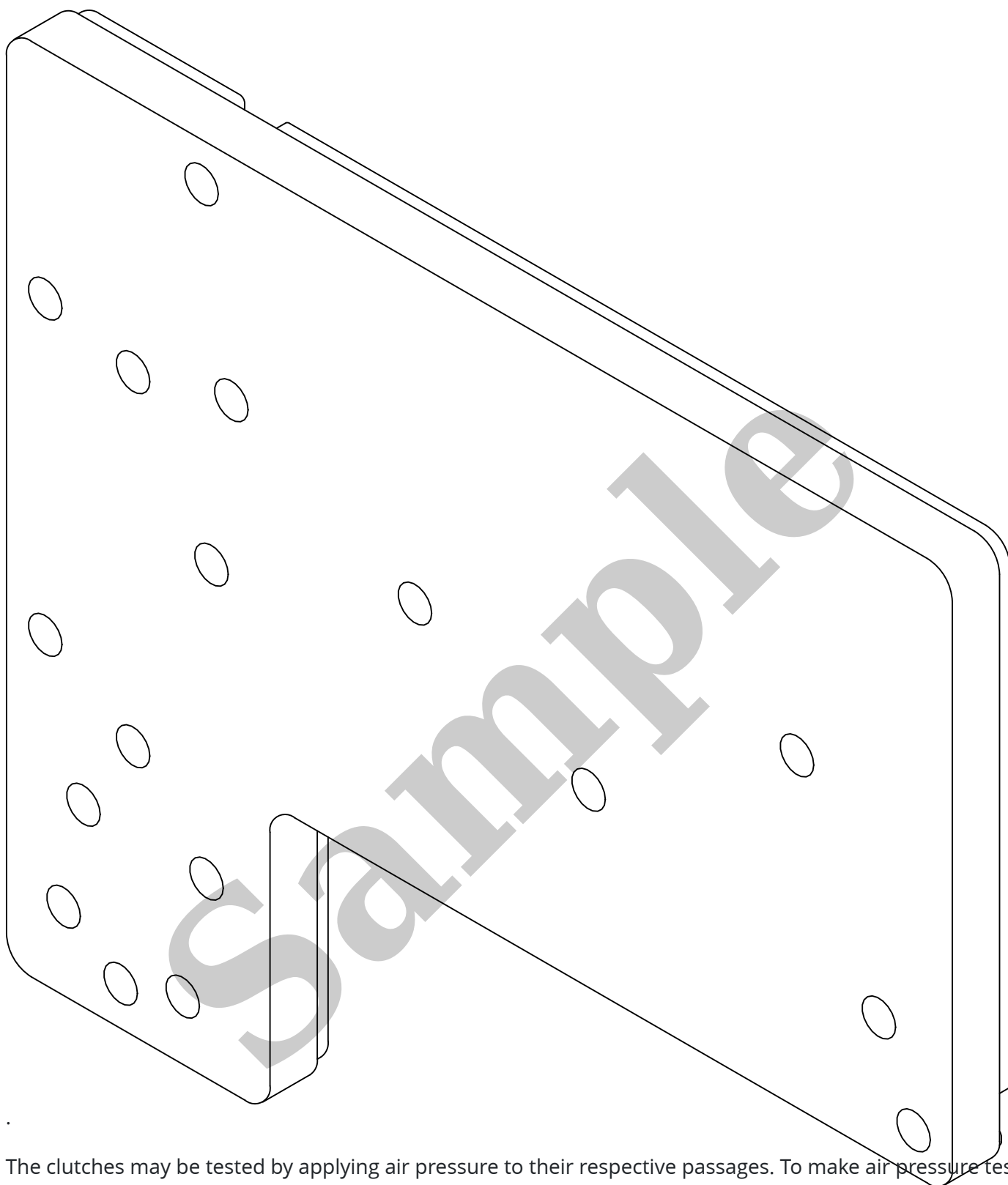
2 - Clutch E O-Ring

1. Install the Clutch E seal and O-ring.



1 - Clutch E Piston

5. Install the Clutch E piston onto the hub.



The clutches may be tested by applying air pressure to their respective passages. To make air pressure tests, proceed as follows:

NOTE

The compressed air supply must be free of all dirt and moisture. Use a pressure of 5-8 bar (73-116 psi).