

Your Ultimate Source for OEM Repair Manuals

FactoryManuals.net is a great resource for anyone who wants to save money on repairs by doing their own work. The manuals provide detailed instructions and diagrams that make it easy to understand how to fix a vehicle.

2017 FORD Mondeo Wagon OEM Service and Repair Workshop Manual

[Go to manual page](#)

4. **NOTE**

When installing a new airbag or inflatable seatbelt inflator, a prepaid return postcard is provided with the replacement part. The serial number for the new part and the VIN (vehicle identification number) must be recorded and sent to Ford Motor Company.

If installing a new airbag, or inflatable seatbelt inflator, record the necessary information and return the inoperative airbag to Ford Motor Company.

Disposal of Deployable Devices and Pyrotechnic Devices That Are Deployed

5. Depower the SRS (supplemental restraint system) .

Refer to: [Supplemental Restraint System \(SRS\) Depowering](#)(501-20B Supplemental Restraint System, General Procedures).

6. Remove the deployed device. Refer to the appropriate procedure in this section or in the seatbelt system section.

7. **NOTE**

If a dual stage driver or passenger airbag has deployed due to a crash event, the airbag requires manual deployment to make sure both stages and the active canister vent (if equipped) have deployed before scrapping the vehicle or disposing of the airbag.

Determine if the vehicle is equipped with dual stage driver or passenger airbags.

Refer to: [Airbag and Seatbelt Pretensioner Supplemental Restraint System \(SRS\) - System Operation and Component Description](#)(501-20B Supplemental Restraint System, Description and Operation).

8. REFER to: Disposal of Deployable Devices and Pyrotechnic Devices That Require Manual Deployment in this procedure.

9. Seal the deployed air bag module(s) in the packaging from the new air bag module(s) or a suitable polythene bag and dispose of the deployed device.

- If required, dispose of in accordance with local contaminated waste regulations.
- If there are no local contaminated waste regulations, dispose of the deployed device in the same manner as any other part to be scrapped.

Disposal of Deployable Devices and Pyrotechnic Devices That Require Manual Deployment

NOTE

- Adaptive load-limiting retractors
- Deployable steering column

16. **NOTE**

If a dual stage driver or passenger airbag has deployed due to a crash event, the airbag requires manual deployment to make sure both stages and the active canister vent (if equipped) have deployed before scrapping the vehicle or disposing of the airbag.

To determine if a vehicle is equipped with dual stage driver or passenger airbags:

Refer to: [Airbag and Seatbelt Pretensioner Supplemental Restraint System \(SRS\) - System Operation and Component Description](#)(501-20B Supplemental Restraint System, Description and Operation).

17. If a dual stage driver or passenger airbag has deployed due to a crash event, the airbag requires manual deployment to make sure both stages and the active canister vent have deployed before scrapping the vehicle or disposing of the airbag. Refer to Driver, Passenger, Knee, Side Curtain and Seat Side Airbags - Remote Deployment in this procedure.

Driver, Passenger, Knee, Side Curtain and Seat Side Airbags - Remote Deployment

NOTE

For airbags with multiple loops, deploy all of the loops on the airbag.

NOTE

Some driver and passenger front airbags have 2 deployment stages and an active canister vent. After a collision it is possible that Stage 1 has deployed and Stage 2 and the active canister vent have not. If a front airbag has deployed, it is mandatory the front airbag be remotely deployed using the appropriate airbag disposal procedure.

NOTE

A typical airbag disposal is shown that is similar for all vehicles.

18. • **NOTE**

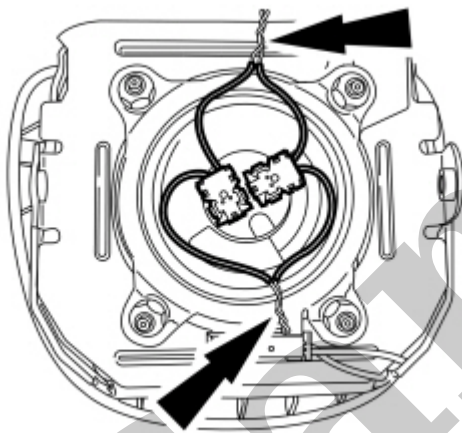
- For vehicles being scrapped, cut each of the airbag wires near the electrical connector that connects to the vehicle wire harness.
- For vehicles not being scrapped, acquire the appropriate wiring pigtail kit. REFER to the Wiring Diagrams manual.

22. Remove any sheathing (if present) and strip the insulation from the ends of the cut wires.

23. **NOTE**

Typical driver airbag with 2 loops shown, other airbags with multiple loops or multiple features (canister vent, active tether) similar.

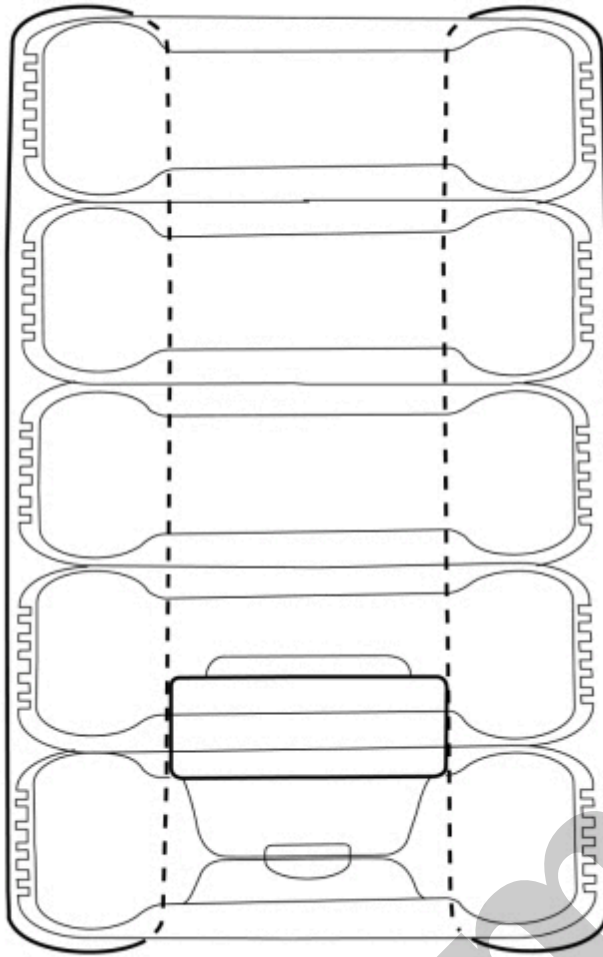
For airbags with multiple loops, twist together a wire from each loop then repeat for the remaining wires from each loop.



E144159

[Click here to learn about symbols, color coding, and icons used in this manual.](#)

24. • Make a jumper harness to deploy the airbag module by obtaining 2 wires (20 gauge minimum) at least 9.14 m (30 ft).
- At one end of the jumper harness, connect the wires together.
25. Using the end of the jumper harness where the wires are not connected together, attach each wire of the jumper harness to each wire of the airbag or to the twisted-together wires if multiple loops. Use tape or other insulating material to make sure the leads do not make contact with each other.



E142969

[Click here to learn about symbols, color coding, and icons used in this manual.](#)

27. **NOTE**

Make sure the airbag connections are maintained.

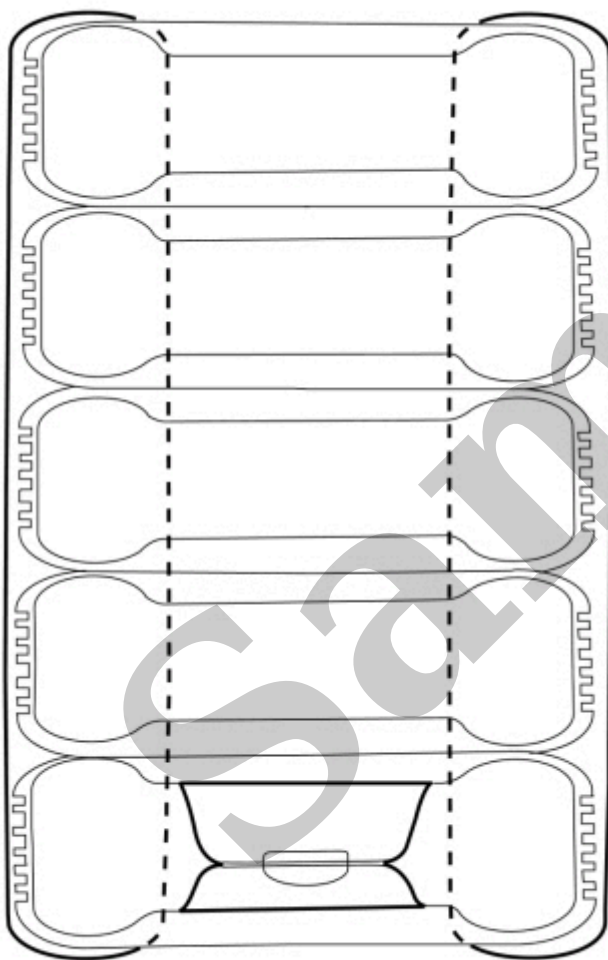
- For passenger, knee and seat side airbags, tip the stack of tires on its side.
- Place the airbag inside the center tire, making sure that there are 2 tires beneath the tire containing the airbag and 2 tires (including the tire and wheel assembly) above the tire containing the airbag.
- Place the tire stack upright, with the wheel on top.

33. • **NOTE**

The tires must be of sufficient size to accommodate the seatbelt anchor, buckle, retractor or inflator.

Obtain a tire and wheel assembly and 4 additional tires (without wheels) of the same size.

- With the tire and wheel assembly on the bottom, stack the tires.
- Securely tie all of the tires together.



E142968

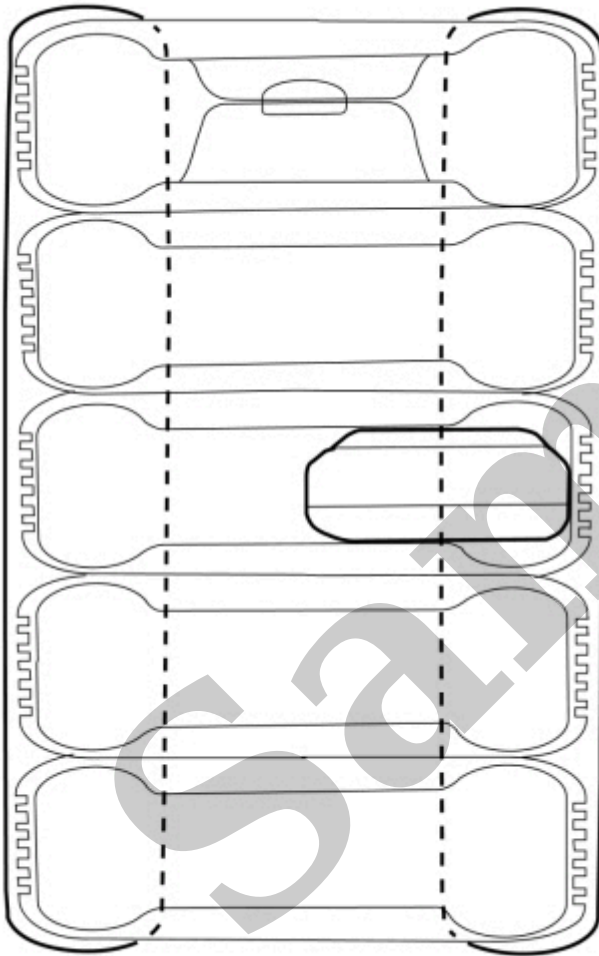
[Click here to learn about symbols, color coding, and icons used in this manual.](#)

34. Depower the SRS (supplemental restraint system) .

Refer to: [Supplemental Restraint System \(SRS\) Depowering](#)(501-20B Supplemental Restraint System, General Procedures).

Make sure the airbag connections are maintained.

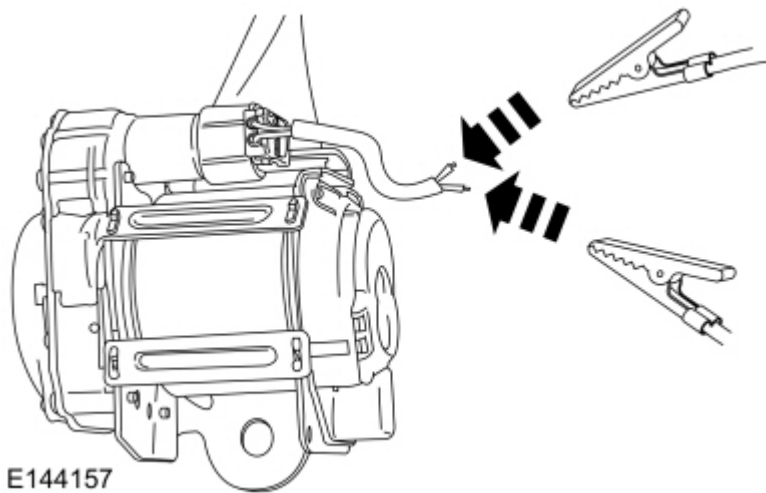
- Tip the stack of tires on its side.
- Place the seatbelt anchor, buckle, retractor or inflator inside the center tire, making sure that there are 2 tires beneath the tire containing the airbag and 2 tires (including the tire and wheel assembly) above the tire containing the airbag.
- Place the tire stack upright, with the wheel on top.



E142970

[Click here to learn about symbols, color coding, and icons used in this manual.](#)

42. Remain at least 9.14 m (30 ft) away from the seatbelt anchor, buckle, retractor or inflator.
43. From the end of the jumper harness that is not connected to the seatbelt anchor, buckle, retractor or inflator, disconnect the 2 wires of the jumper harness from each other.



[Click here to learn about symbols, color coding, and icons used in this manual.](#)

53. Remain at least 9.14 m (30 ft) away from the seatbelt anchor, buckle or retractor.
54. Remain at least 9.14 m (30 ft) away from the seatbelt anchor, buckle, retractor or inflator.
55. From the end of the jumper harness that is not connected to the seatbelt anchor, buckle or retractor, disconnect the 2 wires of the jumper harness from each other.
56. Deploy the seatbelt anchor, buckle or retractor by touching the ends of the 2 wires of the jumper harness to the terminals of a 12-volt battery.
57. To allow for cooling, wait at least 10 minutes before approaching the deployed seatbelt anchor, buckle or retractor.
58. Dispose of the deployed seatbelt anchor, buckle or retractor in the same manner as any other part to be scrapped.

Safety Canopy® and Side Air Curtains - In-Vehicle Deployment

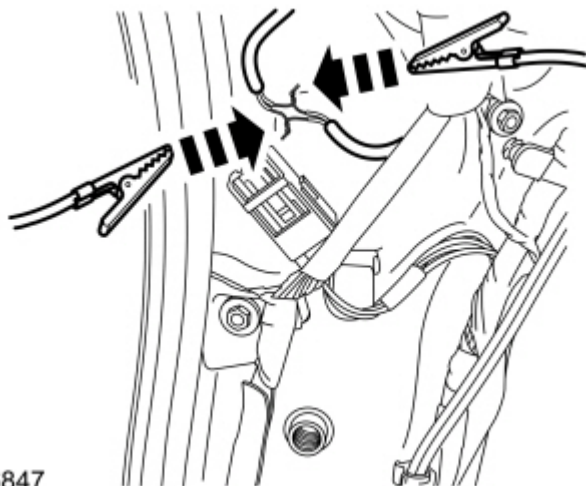
NOTE

The Safety Canopy® deployment for a scrapped vehicle occurs in its installed position in the vehicle.

NOTE

A typical Safety Canopy® disposal is shown.

59. Depower the SRS (supplemental restraint system)



E146847

[Click here to learn about symbols, color coding, and icons used in this manual.](#)

66. From the end of the jumper harness that is not connected to the Safety Canopy® /side air curtain, disconnect the 2 wires of the jumper harness from each other.
67. Deploy the Safety Canopy® /side air curtain by touching the ends of the 2 wires of the jumper harness to the terminals of a 12-volt battery.
68. To allow for cooling, wait at least 10 minutes before approaching the deployed Safety Canopy® /side air curtain.
69. Dispose of the deployed Safety Canopy® /side air curtain in the same manner as any other part to be scrapped.

Deployable Steering Column - In-Vehicle Deployment

70. Depower the SRS (supplemental restraint system)

Refer to: [Supplemental Restraint System \(SRS\) Depowering](#)(501-20B Supplemental Restraint System, General Procedures).

71. NOTE

It may be necessary to lower or remove the deployable steering column from the instrument panel to access the deployable steering column electrical connector.

Access the deployable steering column electrical connector.

72. NOTE

Supplemental Restraint System (SRS) Depowering

501-20B Supplemental Restraint System	2022 F-150
General Procedures	Procedure revision date: 04/25/2019

Supplemental Restraint System (SRS) Depowering

Depower

WARNING

Incorrect repair techniques or actions can cause an accidental Supplemental Restraint System (SRS) deployment. Never compromise or depart from these instructions. Failure to precisely follow all instructions could result in serious personal injury from an accidental deployment.

1. WARNING

Before beginning any service procedure in this manual, refer to health and safety warnings in section 100-00 General Information. Failure to follow this instruction may result in serious personal injury.

Refer to: [Health and Safety Precautions](#)(100-00 General Information, Description and Operation).

2. Determine if a SRS (supplemental restraint system) fault is present. Turn the ignition OFF and wait 10 seconds, then turn the ignition ON and monitor the airbag warning indicator. The airbag warning indicator illuminates continuously for approximately 6 seconds and then turns off. Continue to monitor the airbag warning indicator for approximately 30 seconds as this is the time required for the RCM (restraints control module) to complete testing of the SRS (supplemental restraint system) .
3.
 - If the airbag warning indicator either fails to light, remains lit continuously or flashes, an SRS (supplemental restraint system) fault is present. The flashing may not occur until approximately 30