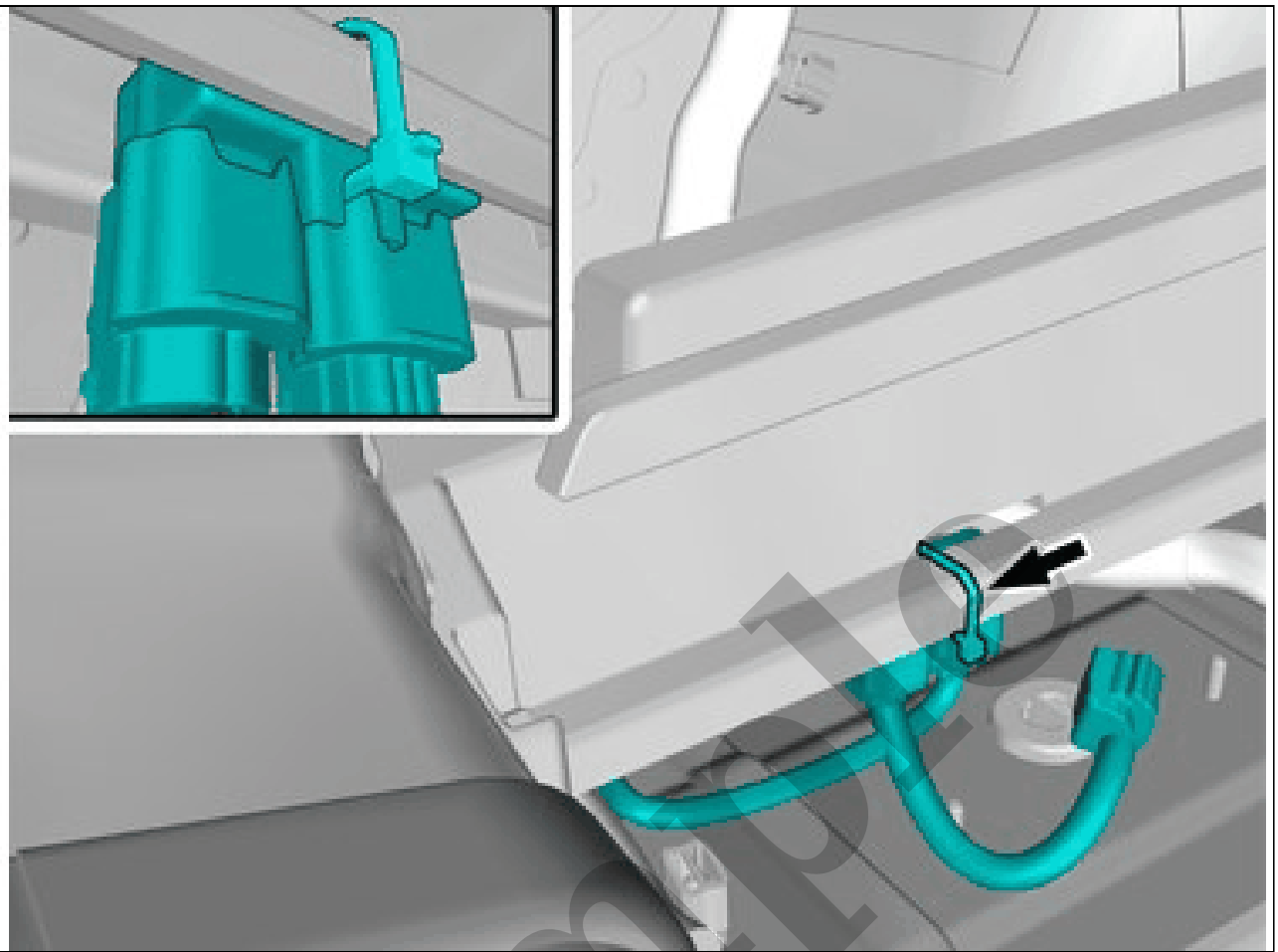


Your Ultimate Source for OEM Repair Manuals

FactoryManuals.net is a great resource for anyone who wants to save money on repairs by doing their own work. The manuals provide detailed instructions and diagrams that make it easy to understand how to fix a vehicle.

2016 VOLVO V60 Polestar OEM Service and Repair Workshop Manual

[Go to manual page](#)

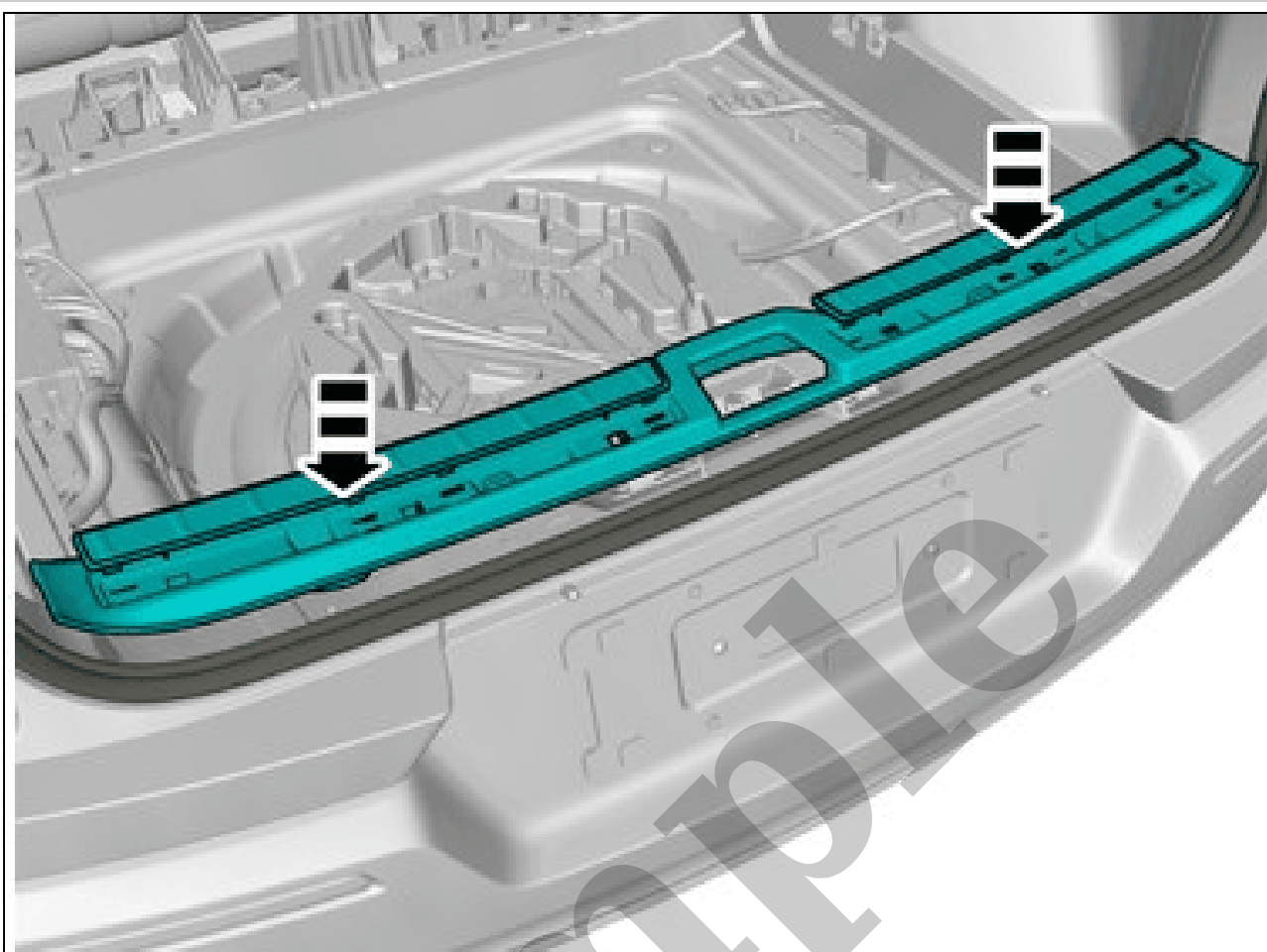


Courtesy of VOLVO CARS CORPORATION

Install the marked components.

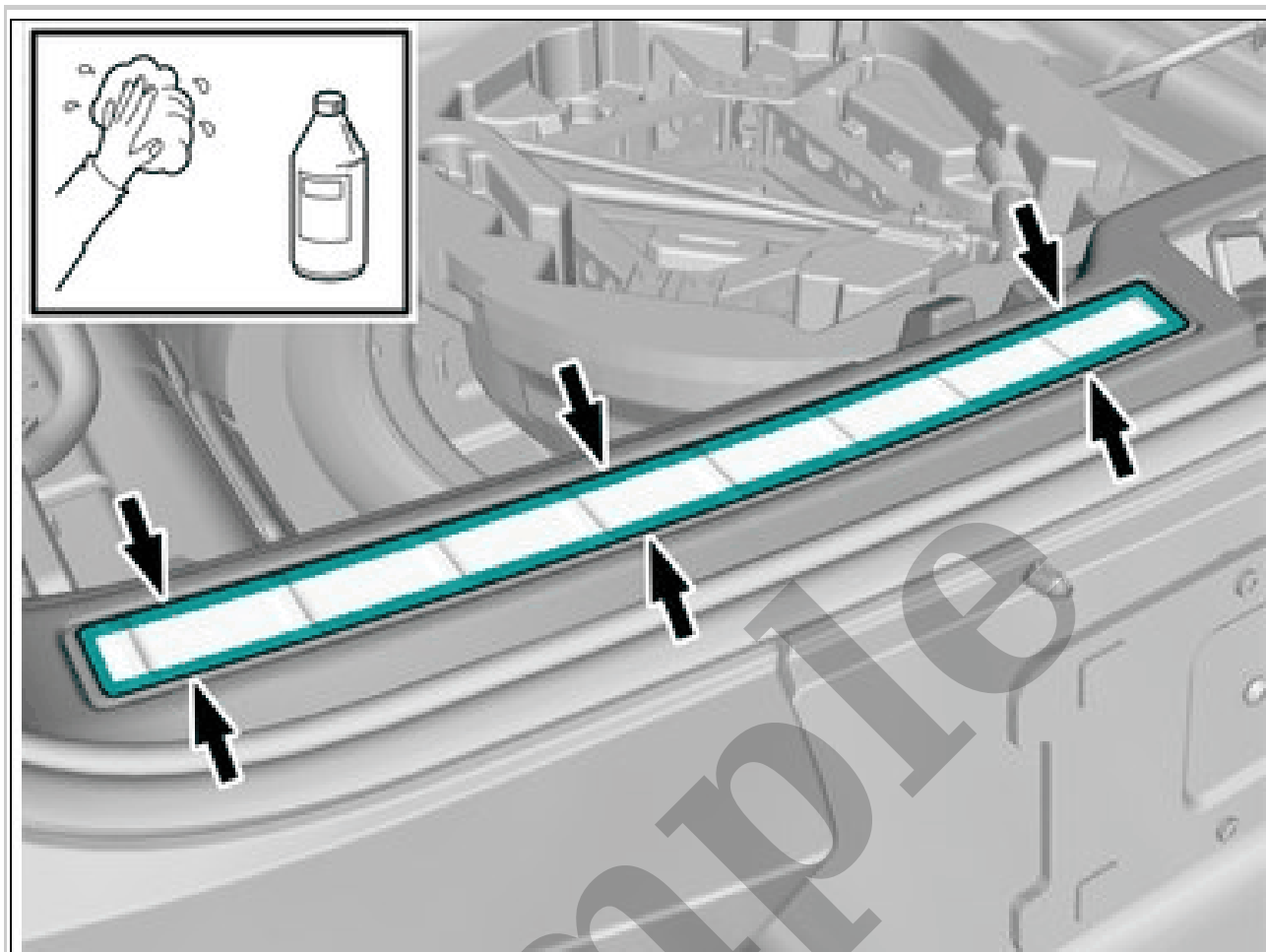
Use a cable tie

VEHICLES WITH SUSPENSION MODULE (SUM)



Courtesy of VOLVO CARS CORPORATION

Install component that comes with the accessory kit.
Make sure that the weather strip goes on top of the panel.
Use: Interior trim remover



Courtesy of VOLVO CARS CORPORATION

Remove any traces of glue.

Use a mixture of 50% Volvo concentrated washer fluid and 50% water.

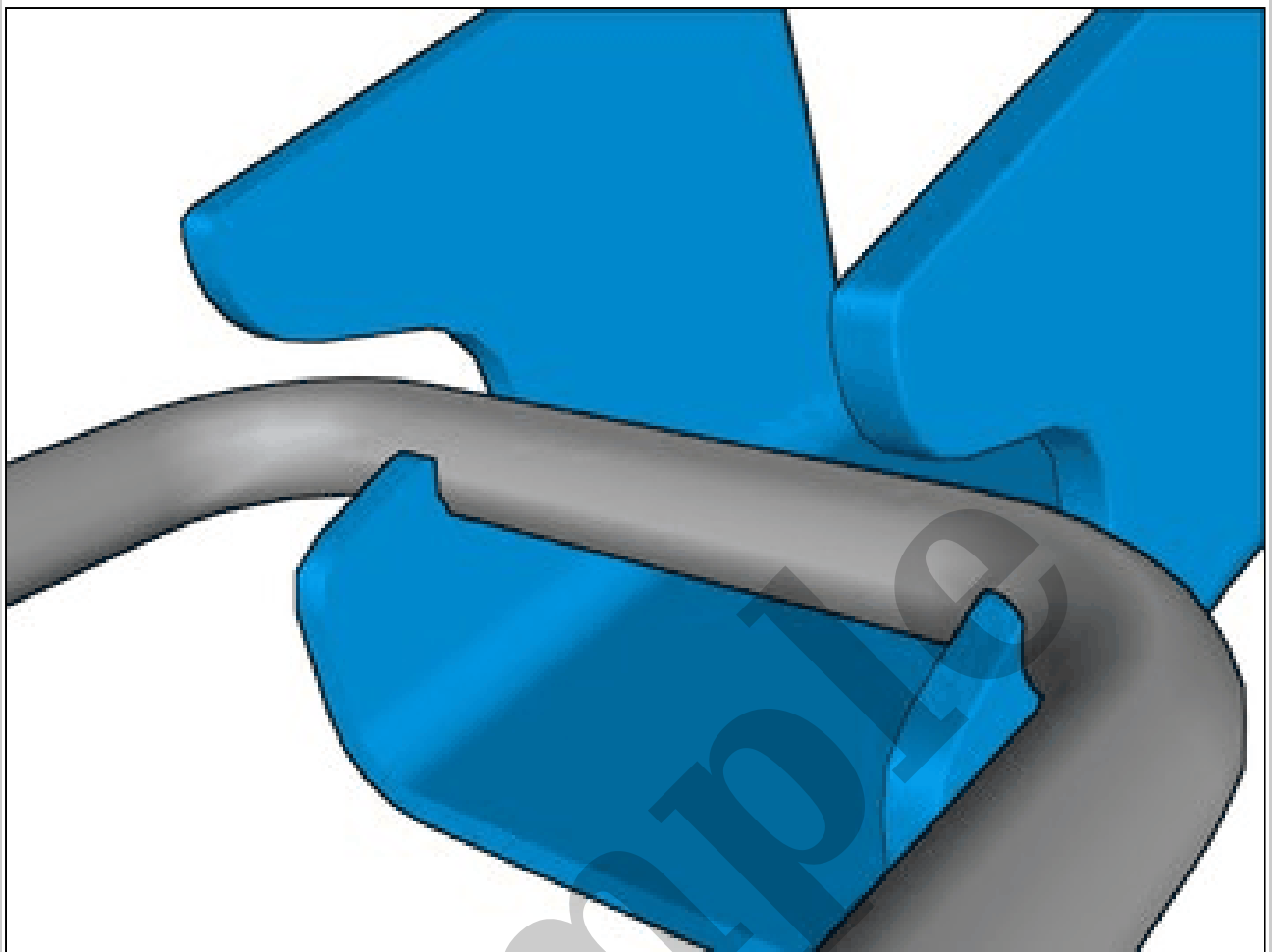
Repeat on the other side.

INSTALLATION

Reinstall the removed parts in reverse order.

CHILD SEAT, ISOFIX GUIDE > CHILD SEAT, ISOFIX GUIDE [2018-2022] > ACCESSORY INSTALLATION

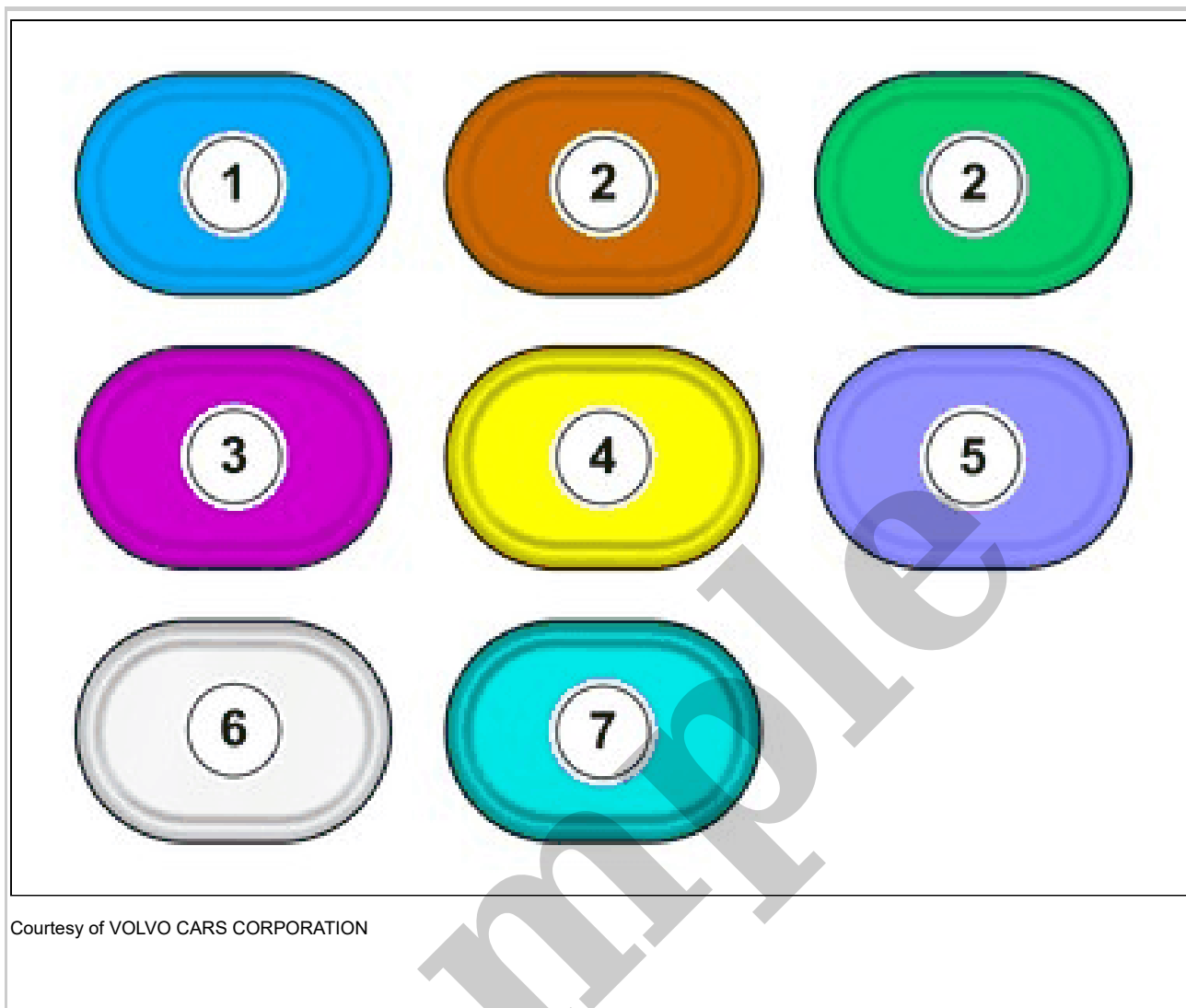
Component overview



Courtesy of VOLVO CARS CORPORATION

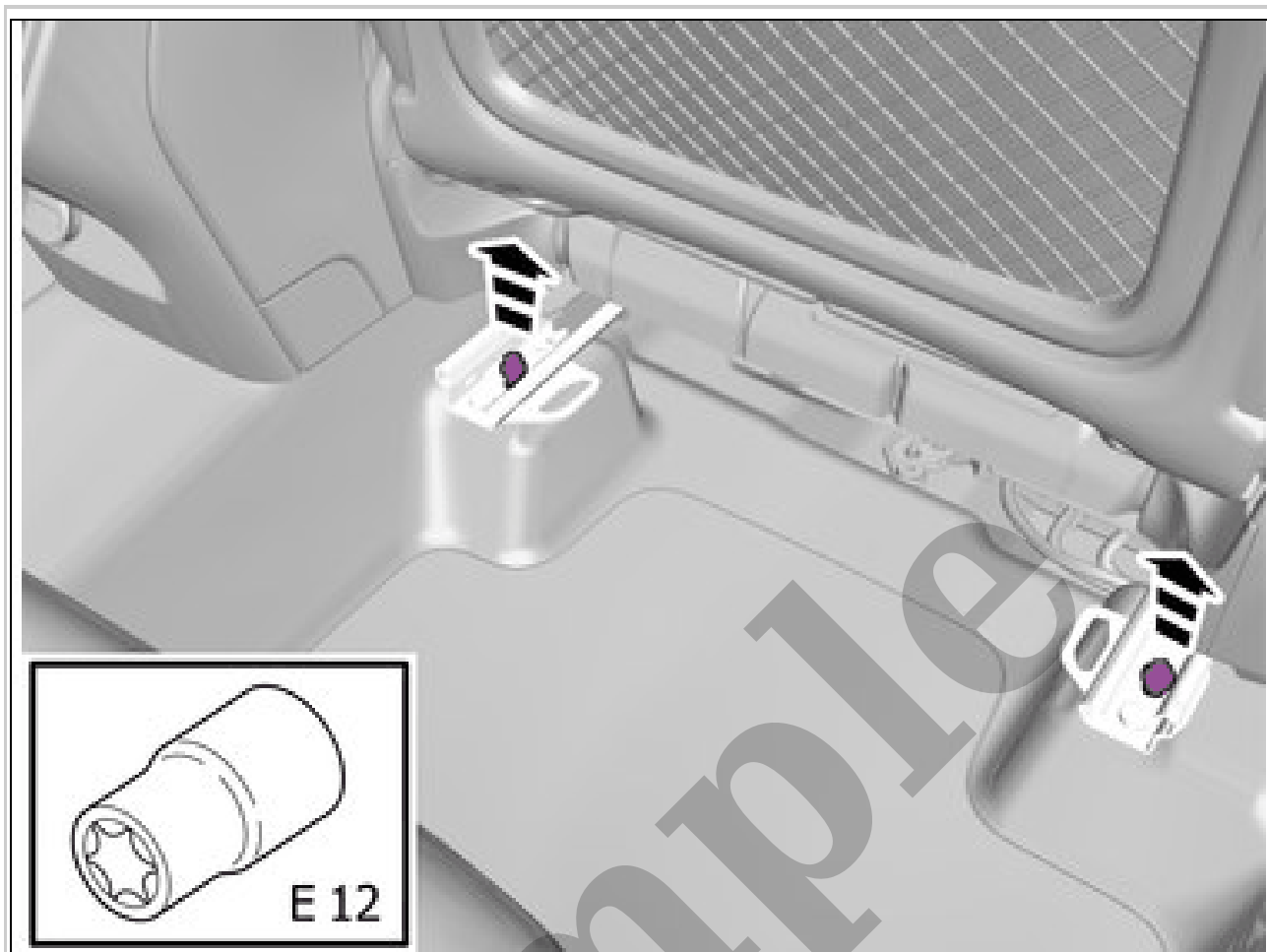
**CHILD SEAT, ISOFIX MOUNTING, FRONT > CHILD SEAT, ISOFIX MOUNTING, FRONT
[2018-2022] > ACCESSORY INSTALLATION**

Equipment



NOTE: This color chart displays (in color print and electronic version) the importance of the different colors used in the images of the method steps.

1. Used for focused component, the component with which you will do something.
2. Used as extra colors when you need to show or differentiate additional parts.
3. Used for attachments that are to be removed/installed. May be screws, clips, connectors, etc.
4. Used when the component is not fully removed from the vehicle but only hung to the side.
5. Used for standard tools and special tools.
6. Used as background color for vehicle components.
7. Used for accessory components.



Courtesy of VOLVO CARS CORPORATION

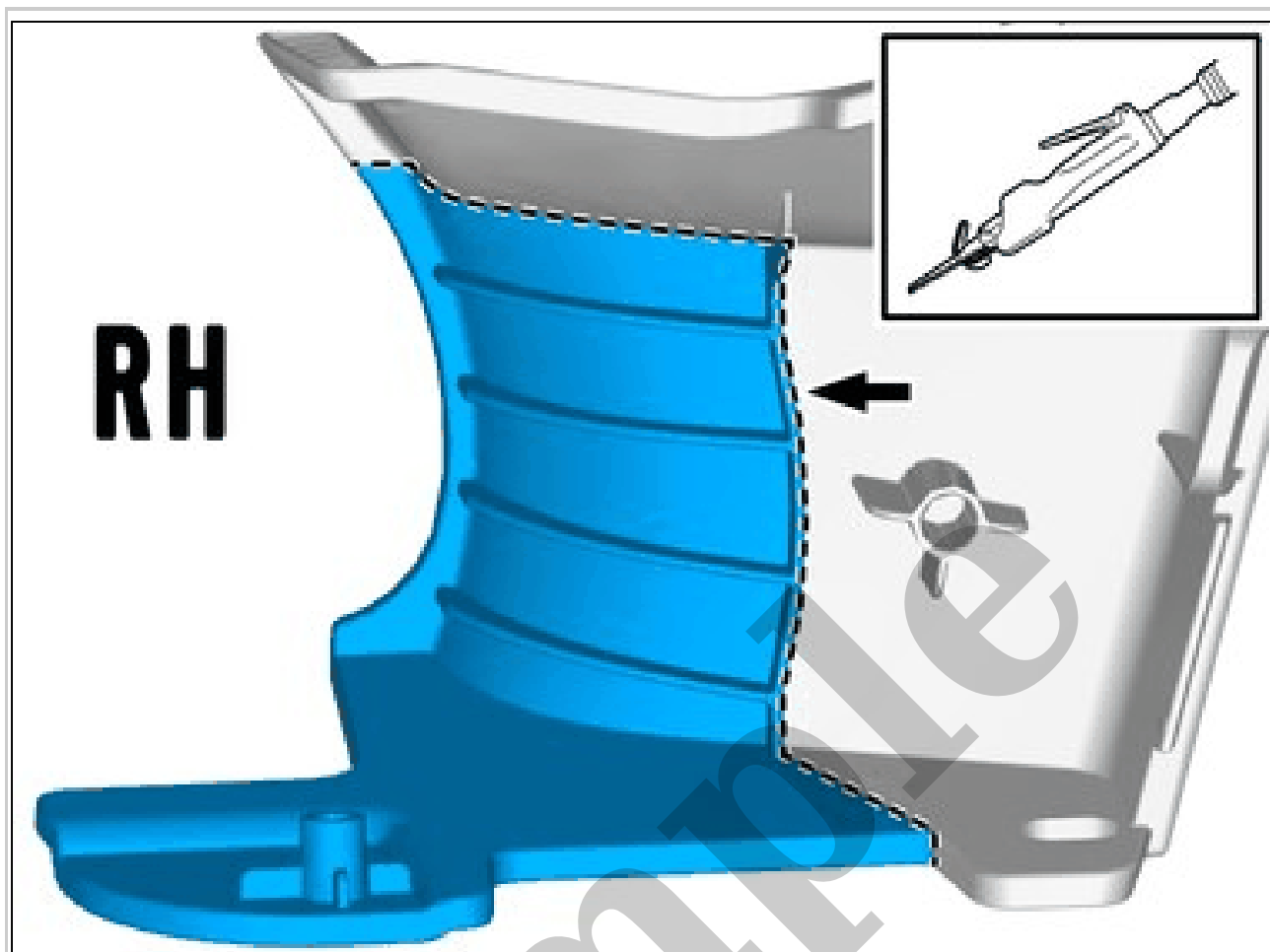
Remove the screws.

Torque: Front seat to body, 40Nm



Courtesy of VOLVO CARS CORPORATION

CAUTION: *Be extra careful when removing or installing this component.*

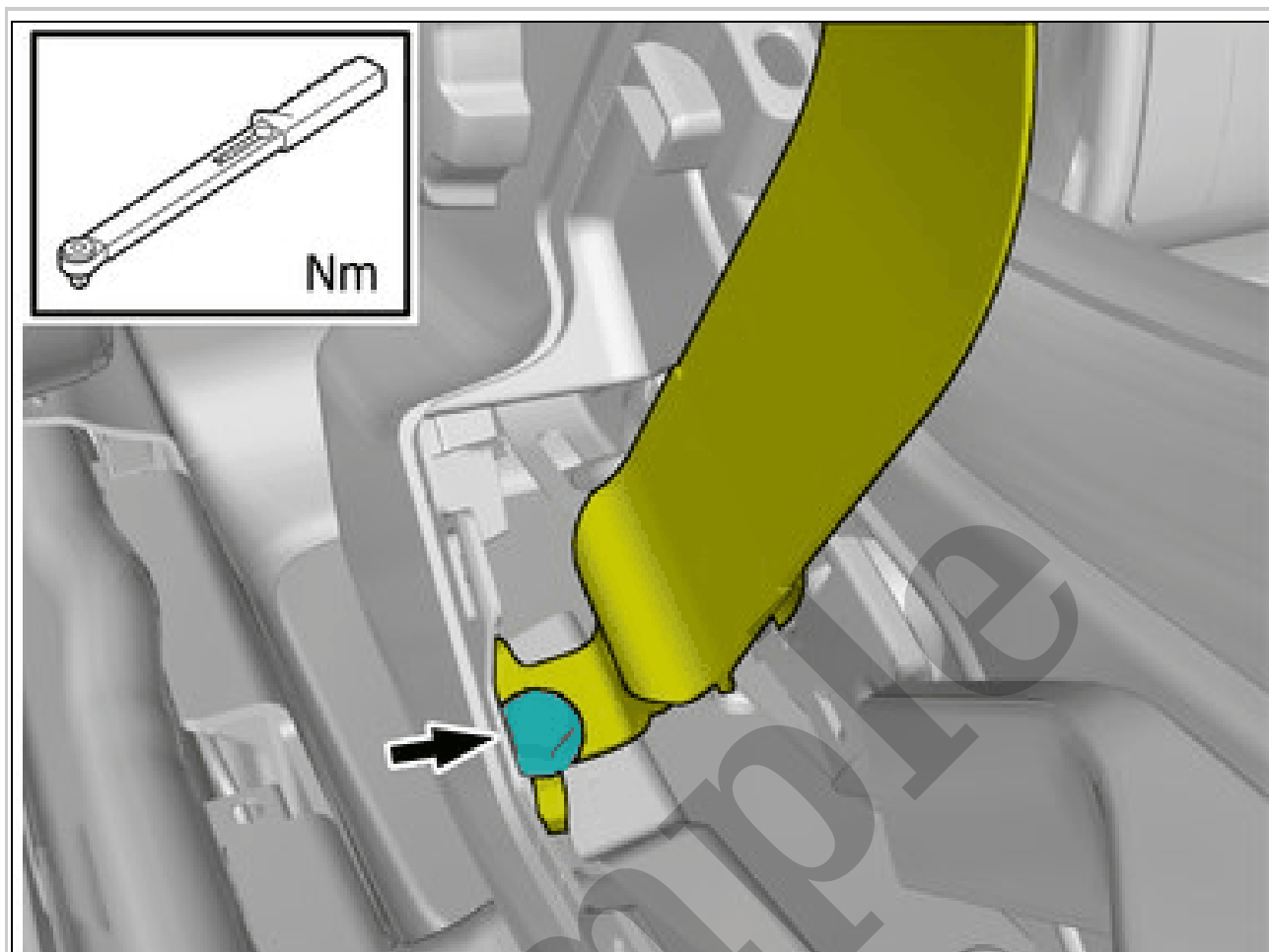


Courtesy of VOLVO CARS CORPORATION

Remove part of component according to image.

Use: Air-powered air saw

Even out the edges using a knife or file.



Courtesy of VOLVO CARS CORPORATION

Reinstall the removed part.

Install component that comes with the accessory kit.

Torque: Seat belt bracket, to Seat, 40Nm

CHILD SEAT, MOUNTING EYELETS > CHILD SEAT, MOUNTING EYELETS [2018-2020 | 2021-2022, B4204T18; B4204T47] > ACCESSORY INSTALLATION

Equipment