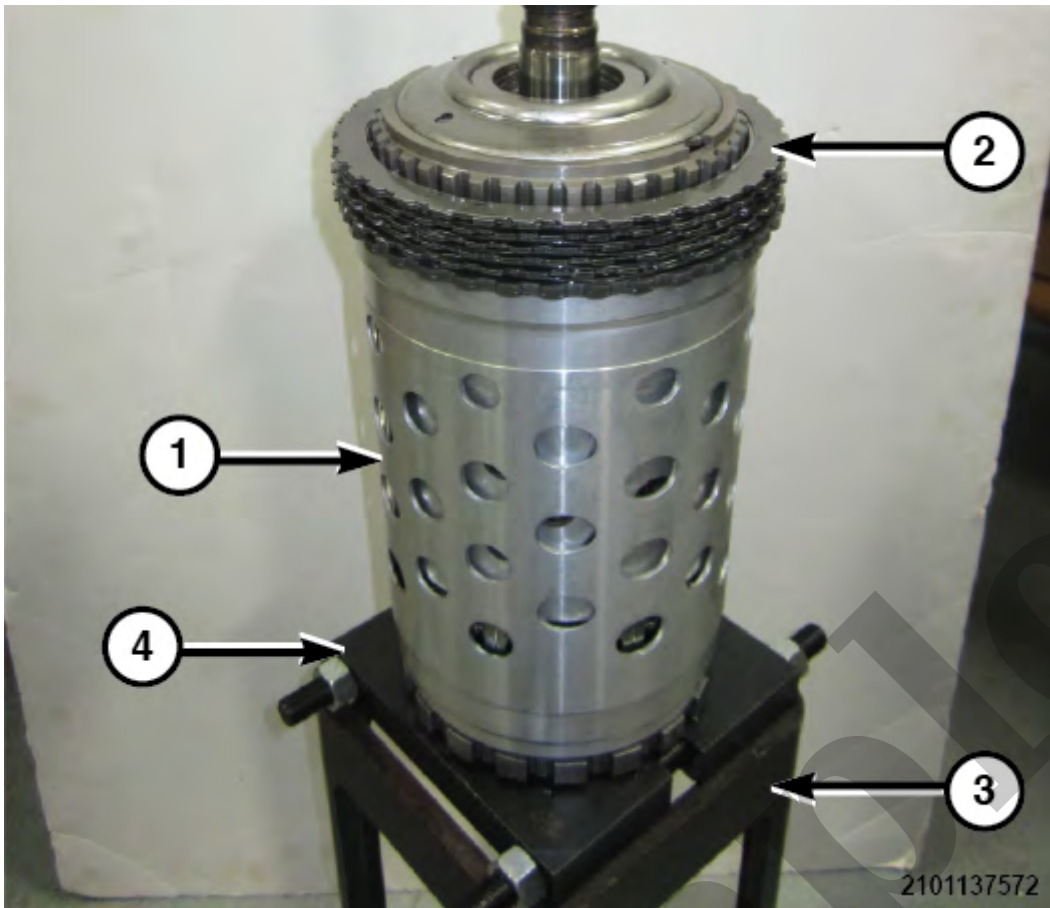


# Your Ultimate Source for OEM Repair Manuals

FactoryManuals.net is a great resource for anyone who wants to save money on repairs by doing their own work. The manuals provide detailed instructions and diagrams that make it easy to understand how to fix a vehicle.

## 2016 JEEP Wrangler Unlimited OEM Service and Repair Workshop Manual

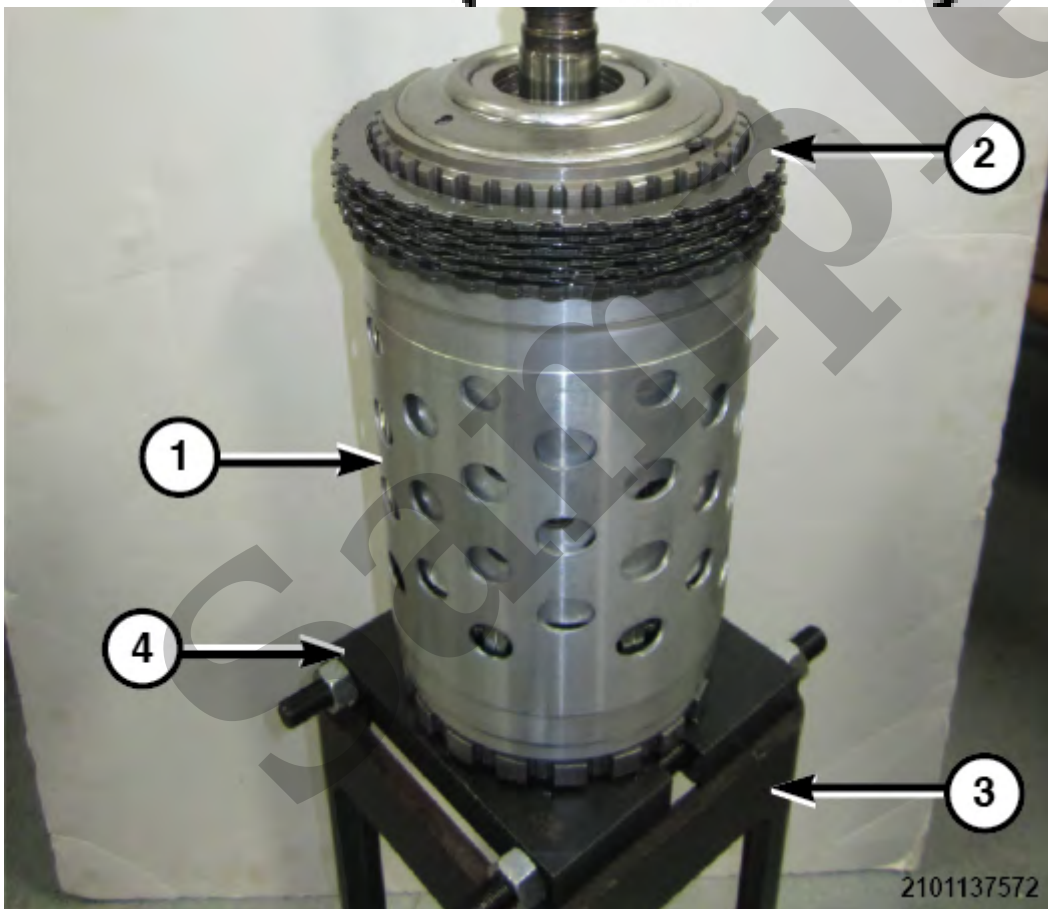
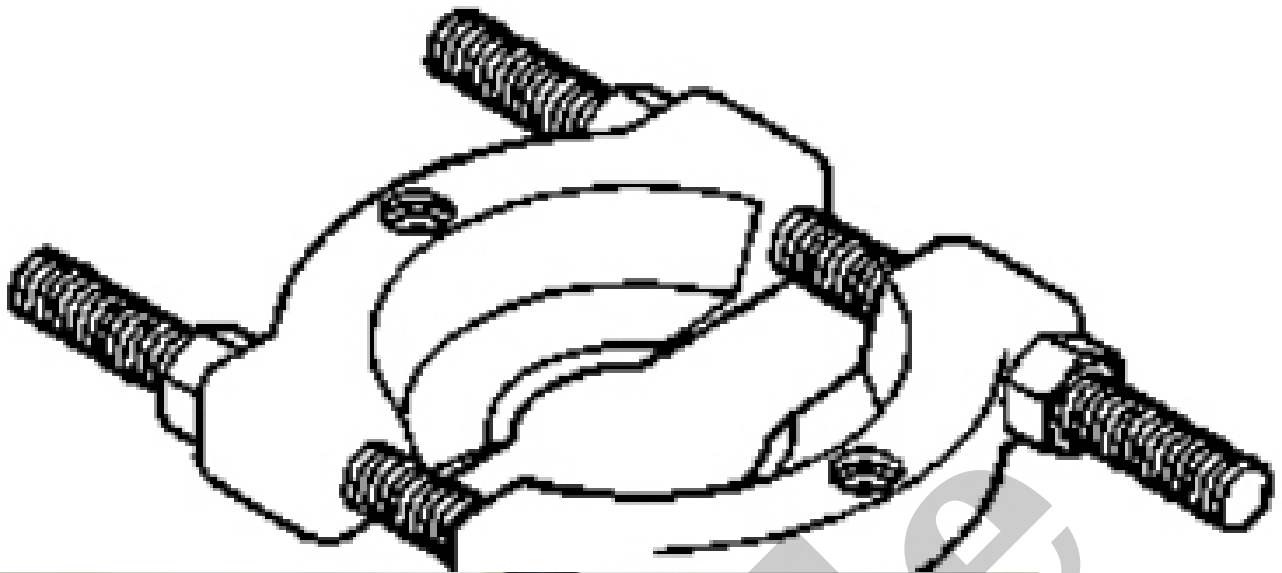
[Go to manual page](#)



1 - P4 Annulus Drum Assembly
2 - Clutch B Discs and Plates
3 - Press Fixture Assembly
4 - Bearing/Gear Splitter

1. Position the input/output shaft and the P4 annulus drum assembly on

Assembly, Press Fixture



1 - P4 Annulus Drum Assembly

2 - Clutch B Discs and Plates

3 - Press Fixture Assembly

Clutch	Condition	Minimum	Normal	Maximum
	AFTER OPERATION	1.62 mm	1.935 mm	2.25 mm
		0.064 in.	0.076 in.	0.089 in.

**CLUTCH C SELECTABLE BACKING PLATES**

4.8 mm	0.188 in.
4.5 mm	0.177 in.
4.2 mm	0.165 in.
3.9 mm	0.153 in.
3.6 mm	0.141 in.
3.3 mm	0.129 in.
3.0 mm	0.118 in.

**DISASSEMBLY**



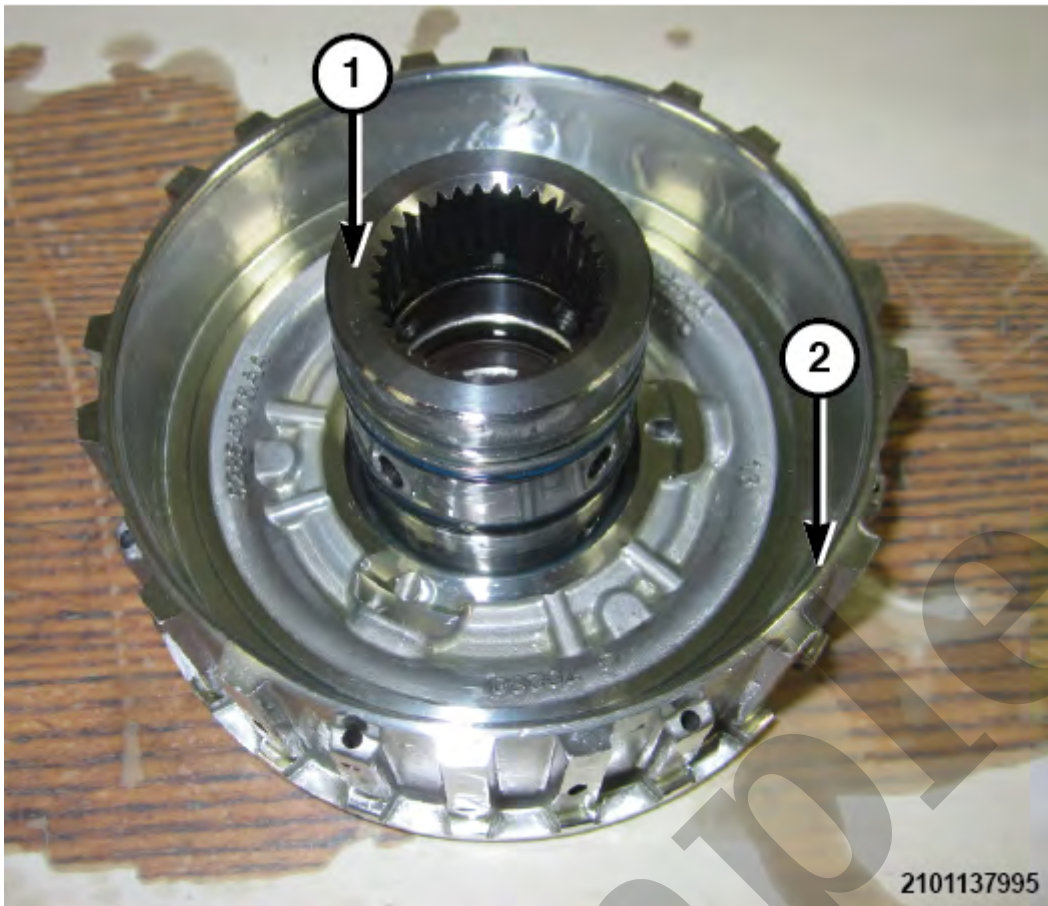
2101137987

1 - Wave Plate



1 - Clutch C Piston

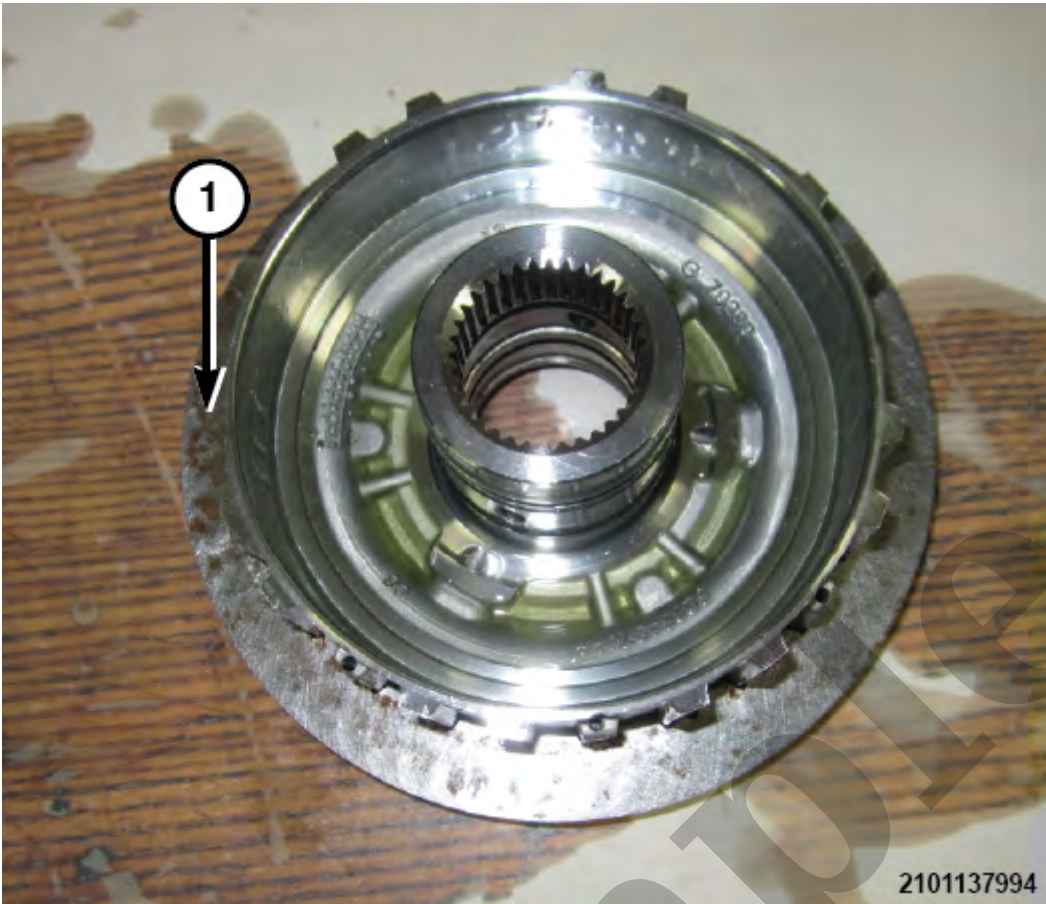
5. Remove the Clutch C piston.



1 - Clutch C Shaft

2 - Clutch C Hub

10. Separate the Clutch C shaft from the Clutch C hub.



1 - Backing Plate

3. Install the backing plate.



1 - Wave Plate



1 - Clutch C Retainer

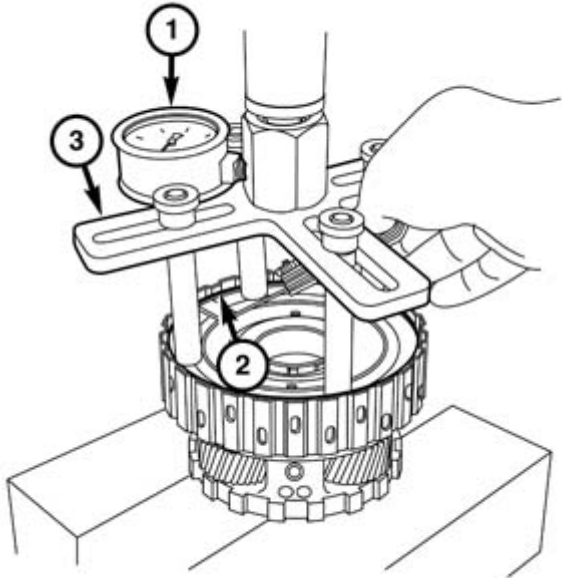
8. Install the Clutch C retainer.



measure the Clutch C clearance. Refer to clutch clearance chart for specifications.

### CLUTCH D - DISASSEMBLY AND ADJUSTMENTS

#### CLUTCH D MEASUREMENT PROCEDURE



211872744

1 - Force Gauge

2 - Pressing Tool

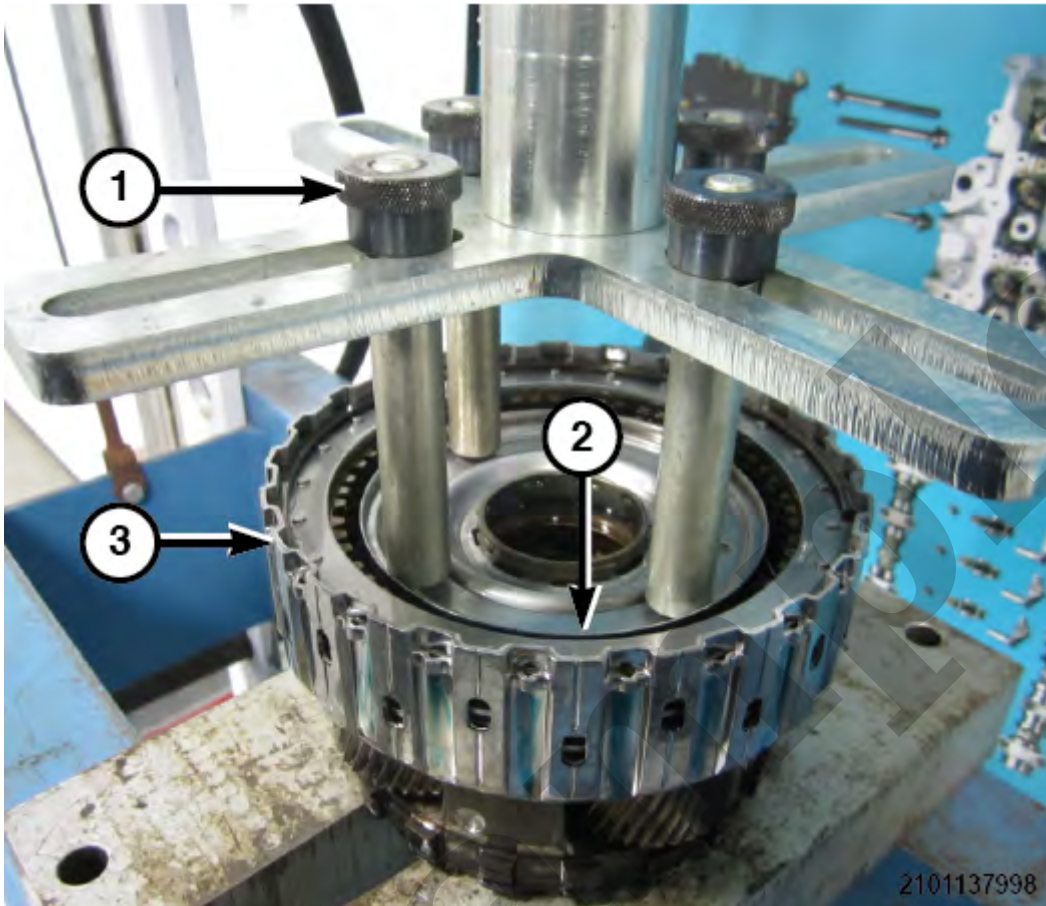
3 - Clutch D

1. Using

Pressing Tool

5 - Wave Plate

Clutch D, depending on transmission Julian date, may contain wave springs that sit around each friction plate.



1 - Pressing Tool

2 - Oil Baffle

3 - Clutch D

1. Place Clutch D in a suitable arbor press.

2. Using

Pressing Tool