

Your Ultimate Source for OEM Repair Manuals

FactoryManuals.net is a great resource for anyone who wants to save money on repairs by doing their own work. The manuals provide detailed instructions and diagrams that make it easy to understand how to fix a vehicle.

2015 NISSAN NV200 OEM Service and Repair Workshop Manual

[Go to manual page](#)

Reducer Side

Disassembly

1 Fix shaft with a vise.

CAUTION:

Protect shaft using aluminum or copper plates when fixing with a vise.

2 Remove boot bands, and then remove boot from housing.

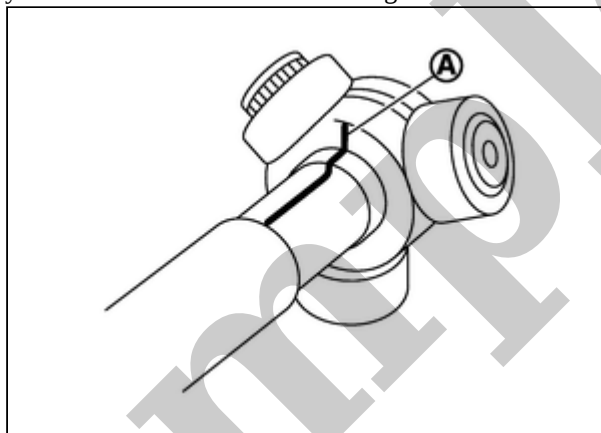
3 Remove stopper ring from housing.

4 Put align mark on housing and shaft and then remove housing from shaft.

CAUTION:

Use paint for align mark to prevent damage.

5 Put align mark **(A)** on spider assembly and shaft and then remove housing from shaft.

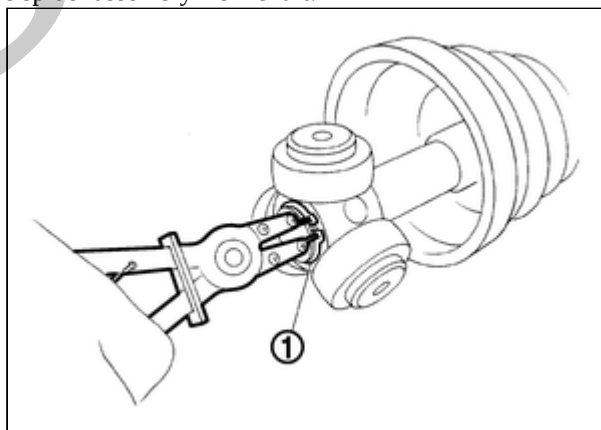


RPR-001932104-01-PDIF0006ZZ

CAUTION:

Use paint for align mark to prevent damage.

6 Remove snap ring **(1)** and the remove spider assembly from shaft.



RPR-001932104-02-PDIF0014ZZ

7 Remove boot from shaft.

8 Remove dust shield from housing assembly.

9 Perform inspection after disassembly. Refer to [Inspection](#).

Assembly

1 Clean old grease adhered on housing with paper cloth.

2 Install dust shield to housing.

CAUTION:

Never reuse dust shield.

3 Install circle clip to housing.

CAUTION:

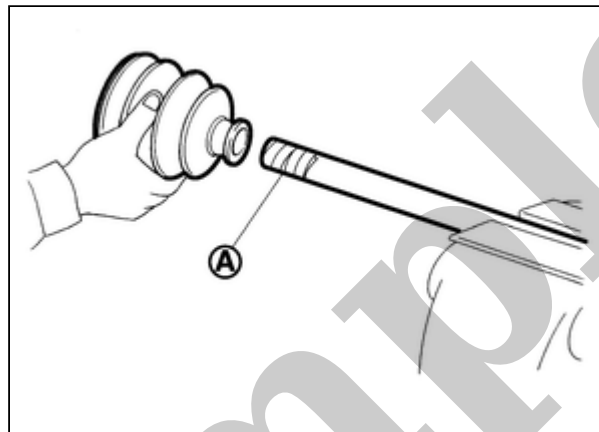
Never reuse circle clip.

4 Install boot bands and boot to shaft.

CAUTION:

Wrap serration on shaft with tape (A) to protect the boot from damage.

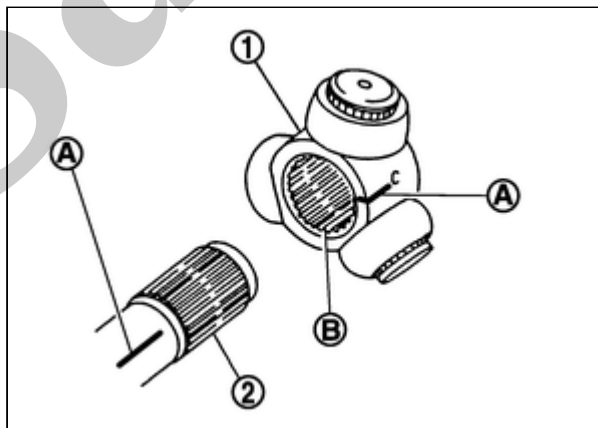
Never reuse boot bands and boot.



RPR-001932104-17-PDIF0009ZZ

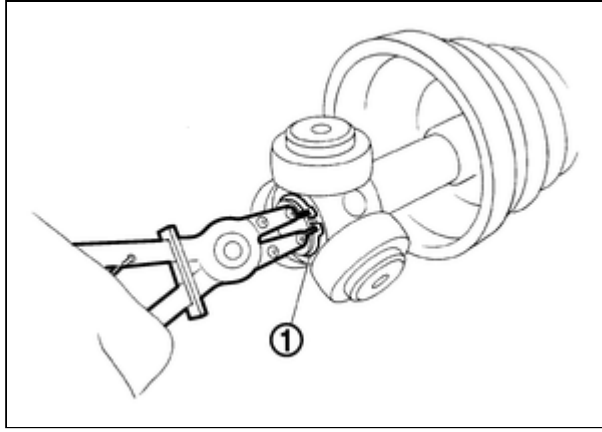
5 Remove tape around serration of shaft.

6 Align both marks on shaft (A) and serration (B) that are put during removal of spider assembly (1) and then assemble them so that the chamfered part of serration part is on shaft side.



RPR-001932104-04-PDIF0017ZZ

7 Secure spider assembly onto shaft with snap ring (1).



RPR-001932104-11-PDIF0014ZZ

CAUTION:

Never reuse snap ring.

8 Apply the appropriate amount of grease to spider assembly and sliding surface.

9 Fill spider assembly and housing inside with the following amount of NISSAN genuine grease (Refer to - "Parts Catalogue")
[Specified Value](#)

[Specified amount of grease](#) : Refer to [Service Data](#).

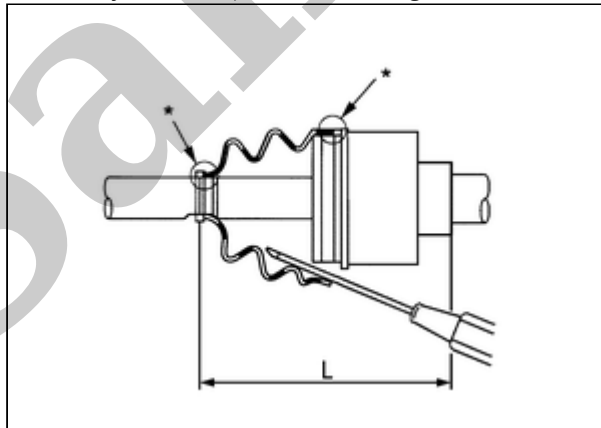
10 Align both marks put during removal of housing and then install to shaft.

11 Install stopper ring.

CAUTION:

Never reuse stopper ring.

12 Install boot securely into grooves (indicated by "*"marks) shown in the figure.



RPR-001932104-16-PDIF0230ZZ

CAUTION:

If grease adheres to the boot mounting surface (indicated by "*" mark) on shaft or housing, boot may be removed. Remove all grease from the surface.

13 To prevent from deformation of the boot, adjust the boot installation length to the value shown below (L) by inserting the suitable tool into the inside of boot from the large diameter side of boot and discharging inside air.

[Specified Value](#)

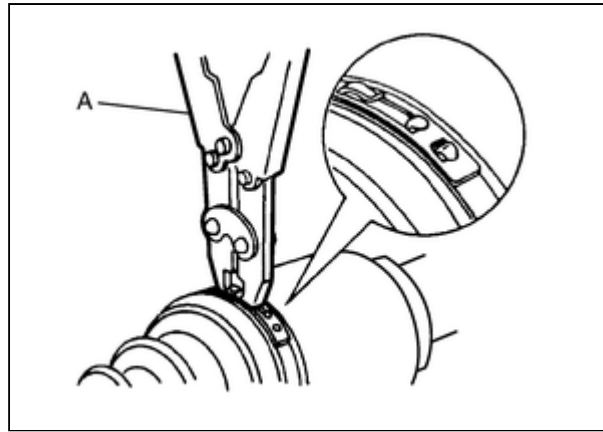
[Boot installation length \(L\)](#) : Refer to [Service Data](#).

CAUTION:

- If the boot installation length exceeds the specified, it may cause breakage in boot.

- Be careful not to touch the inside of the boot with the tip of tool.

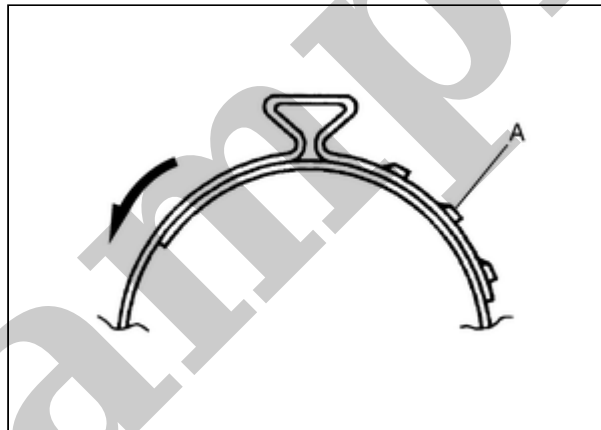
14 Secure the small end of the boot with boot bands using the boot band crimping tool (SST: KV40107300) (A) as shown in the figure.



RPR-001932104-15-PDIF0012ZZ

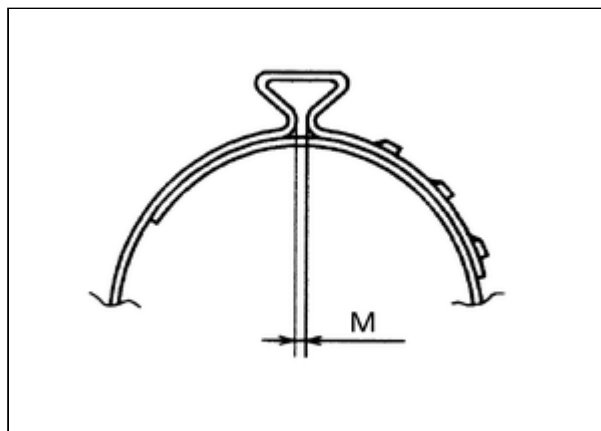
CAUTION:

- Never reuse boot band.
- Boot band claw (A) must be behind the drive direction (←) after assembling.



RPR-001932104-14-SDIA4267ZZ

- Install boot band so that staked area is as shown in the figure.



RPR-001932104-21-SF0047D

Specified value

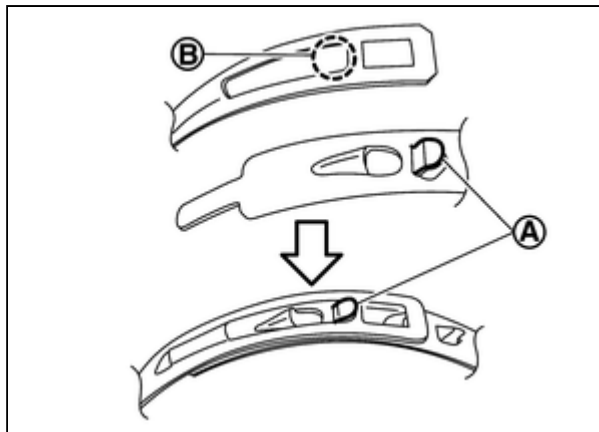
M : 1.0 - 4.0 mm (0.04 - 0.16 in)

15 Secure the large end of the boot with boot band the boot band crimping tool (SST: KV40107310) (A).

CAUTION:

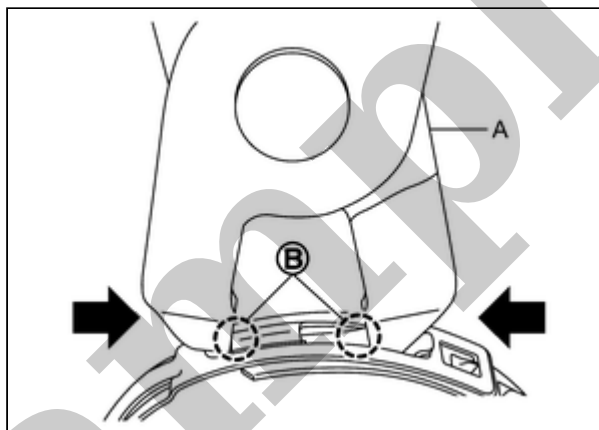
Never reuse boot band.

1. Set boot band to the drive shaft boot groove and temporarily fix pawl (A) of boot band to (B) of boot band.



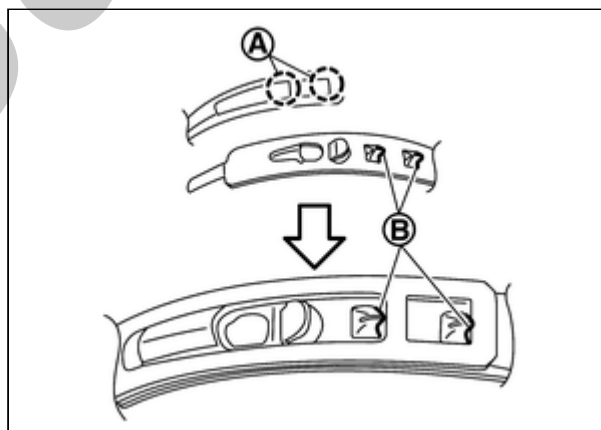
RPR-001932104-05-SDIA6965ZZ

2. Pull protrusion of boot band tighten with boot band crimping tool (SST: KV40107310) (A) in the direction shown by arrows (←).



RPR-001932104-12-SDIA6966ZZ

CAUTION:



RPR-001932104-13-SDIA6968ZZ

Securely install boot band (A) to boot band pawl (B).

16 Check that misalignment between housing and shaft does not occur when boot is rotated after fixing.

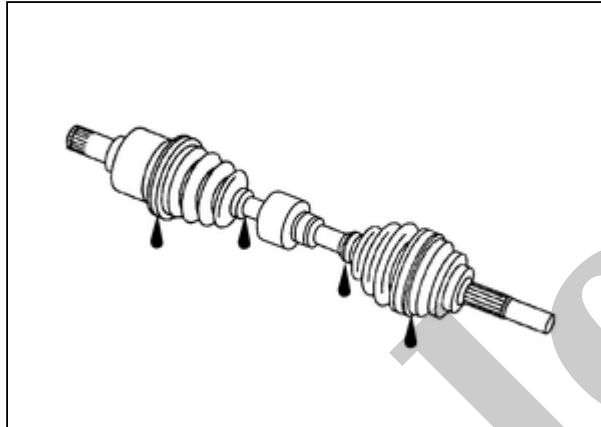
CAUTION:

- **If there is misalignment, reassemble them.**
- **Never reuse boot bands.**

INSPECTION AFTER REMOVAL

Check the following item and if there is abnormality, replace malfunction parts.

- Move joint up/down, left/right, and in the axial directions. Check motion of joint for smoothness and significant looseness.
- Check boot for crack, damage and grease leakage



RPR-001824729-01-DIA1190J

INSPECTION AFTER DISASSEMBLY

Check the following item and if there is abnormality, replace malfunction parts.

Shaft

Check shaft for runout, cracks, or other damage.

Joint Sub-Assembly (Wheel Side)

Check the following:

- Joint sub-assembly for rough rotation and excessive axial looseness
- Joint sub-assembly inside for entry of foreign material
- Joint sub-assembly inside for compression scars, cracks, and fractures.

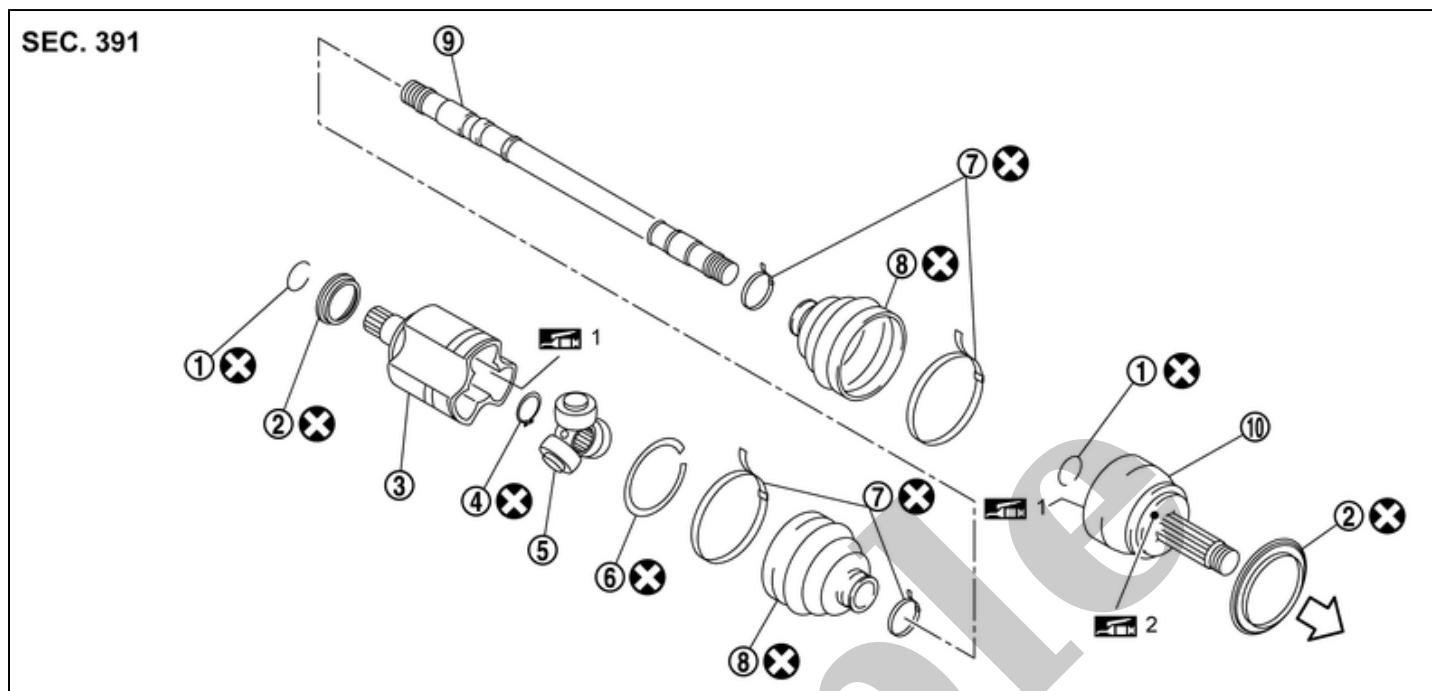
Housing and Spider assembly

Check roller contact surface of housing and roller contact surface spider assembly for scratch or wear.

INSPECTION AFTER INSTALLATION

- Check wheel sensor harness for proper connection. Refer to [Exploded View](#).
- Check wheel alignment. Refer to [Inspection](#).
- Adjust neutral position of steering angle sensor. Refer to [Work Procedure](#).

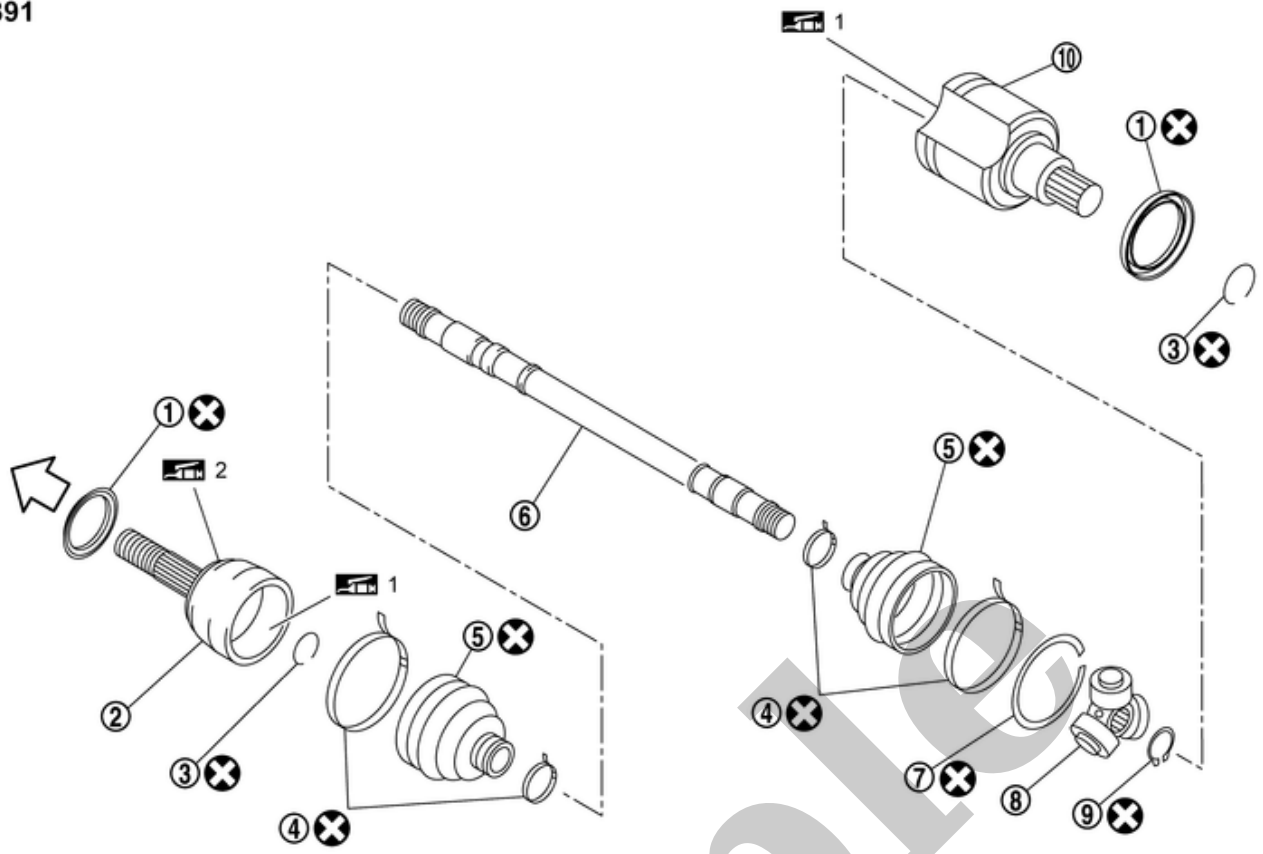
Left side



RDE-001824716-01-000347538

①	Circular clip	②	Dust shield	③	Housing
④	Snap ring	⑤	Spider assembly	⑥	Stopper ring
⑦	Boot band	⑧	Boot	⑨	Shaft
⑩	Joint sub-assembly				
←	: Wheel side				
1	: Nissan genuine designated grease (Refer to parts catalog)				
2	: Apply paste [service parts (440037S000)]				
⊗	: Always replace after every disassembly.				

RIGHT side

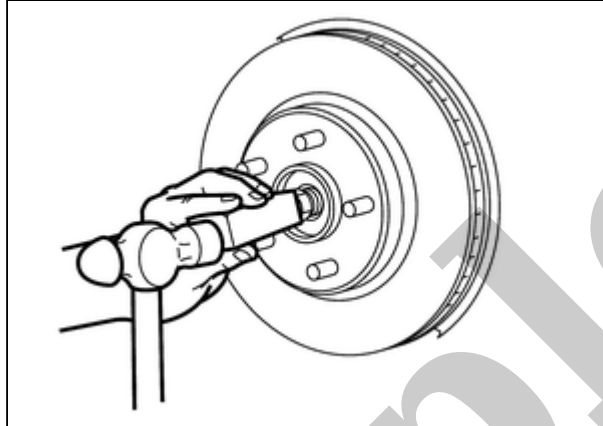


RDE-001824716-02-000347539

①	Dust shield	②	Joint sub-assembly	③	Circular clip
④	Boot band	⑤	Boot	⑥	Shaft
⑦	Stopper ring	⑧	Spider assembly	⑨	Snap ring
⑩	Housing				
←	: Wheel side				
1	: Nissan genuine designated grease (Refer to parts catalog)				
2	: Apply paste [service parts (440037S000)]				
X	: Always replace after every disassembly.				

REMOVAL

- 1 Remove tires. Refer to [Removal & Installation](#).
- 2 Release staked of wheel hub lock nut. Refer to [Removal & Installation](#).
- 3 Loosen wheel hub lock nut. Refer to [Removal & Installation](#).
- 4 Remove transverse link. Refer to [Removal & Installation](#).
- 5 Patch temporarily installed wheel hub lock nut with a piece of wood. Hammer the wood to disengage wheel hub from drive shaft.



RPR-001824725-01-PDIF0320ZZ

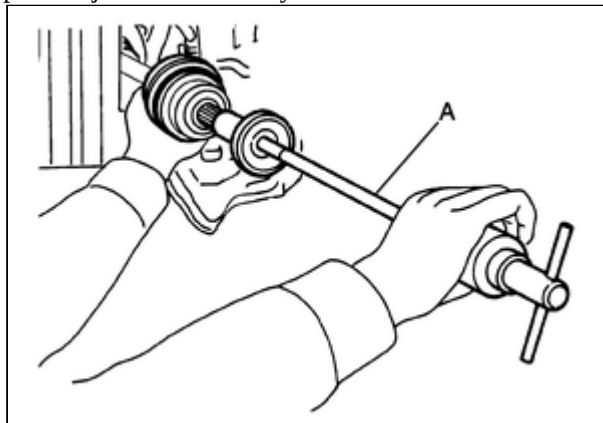
 **NOTE:**
Use suitable puller, if wheel hub and drive shaft cannot be separated even after performing the above procedure.

- 6 Remove wheel hub lock nut. Refer to [Removal & Installation](#).
- 7 Separate steering outer socket from steering knuckle. Refer to [Exploded View](#).
- 8 Remove drive shaft from wheel hub and bearing assembly.

CAUTION:

- Never place drive shaft joint at an extreme angle.
- Be careful not to overextend slide joint.

- 9 Remove boot bands, and then separate boot from joint sub-assembly.
- 10 Screw drive shaft puller (A) (commercial service tool) into joint sub-assembly screw part to a length of 30 mm (1.18 in) or more. Support drive shaft with one hand and pull out joint sub-assembly from shaft.



RPR-001824725-02-PDIF0258ZZ