

Your Ultimate Source for OEM Repair Manuals

FactoryManuals.net is a great resource for anyone who wants to save money on repairs by doing their own work. The manuals provide detailed instructions and diagrams that make it easy to understand how to fix a vehicle.

2015 NISSAN NP300 Pickup Single Cab OEM Service and Repair Workshop Manual

[Go to manual page](#)

FRONT AXLE SYSTEM : Lubricant or/and Sealant

RDE-001932286

Name	Description
NISSAN Genuine grease or equivalent	<ul style="list-style-type: none">• Joint sub-assembly inside• Housing inside
Apply paste [service parts (440037S000)]	Joint sub-assembly

Sample

WHEEL BEARING : Service Data

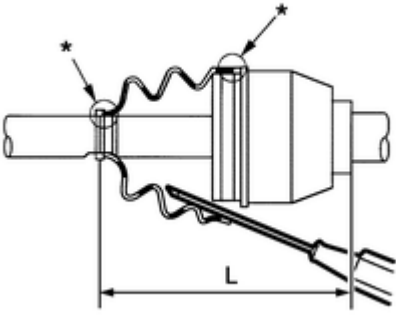
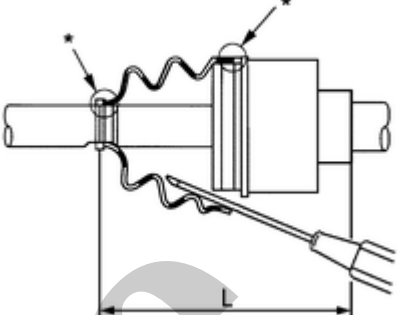
RDE-001824730

Item	Standard
Axial end play	0.05 mm (0.002 in) or less

Sample

FRONT DRIVE SHAFT : Service Data

RDE-001824731

Joint position	Wheel side	Transaxle side
Grease quantity	110 – 130 g (3.87 – 4.58 oz)	230 – 250 g (8.11 – 8.81 oz)
Boots installed length (L)	141.5 mm (5.57 in)	198.4 mm (7.81 in)
	 <p data-bbox="501 719 880 745">RDE-001824731-01-PDIG0136ZZ</p>	 <p data-bbox="1129 719 1509 745">RDE-001824731-02-PDIF0230ZZ</p>

Sample

NVH Troubleshooting Chart

SIEMD-7200703

Possible cause and suspected parts	Symptom								Reference
	DRIVE SHAFT		FRONT AXLE						
	Noise	Shake	Noise	Shake	Vibration	Shimmy	Judder	Poor quality ride or handling	
Excessive joint angle	x	x	—	—	—	—	—	—	
Joint sliding resistance	x	—	—	—	—	—	—	—	Inspection
Imbalance	—	x	—	—	—	—	—	—	—
Improper installation, looseness	—	—	x	x	x	x	x	x	Removal and Installation
Parts interference	—	—	x	x	x	x	—	x	—
Wheel bearing damage	x	x	x	x	x	—	—	—	Periodic Maintenance Operation
FRONT AXLE AND FRONT SUSPENSION	x	x	x	x	x	x	x	x	NVH in FAX and FSU sections
FRONT AXLE	x	x	—	—	—	—	—	—	Refer to FRONT AXLE in this chart
TIRE	x	x	x	x	x	x	x	x	NVH in WT section
ROAD WHEEL	x	x	x	x	—	x	x	x	NVH in WT section
DRIVE SHAFT	—	—	x	x	x	—	—	—	Refer to DRIVE SHAFT in this chart
BRAKE	x	x	x	x	—	x	x	—	NVH in BR section
STEERING	x	x	x	x	x	x	x	—	NVH in ST section

x: Applicable

FRONT DRIVE SHAFT : Periodic Maintenance Operation

RPR-001824714

Check the following items, and replace the part if necessary.

- Check drive shaft mounting point and joint for looseness and other damage.

CAUTION:

Replace entire drive shaft assembly when noise or vibration occurs from drive shaft.

- Check boot for cracks and other damage.

Sample

COMPONENT PART

Check that the mounting conditions (looseness, backlash) of each component and component conditions (wear, damage) are normal.

WHEEL HUB ASSEMBLY (BEARING-INTEGRATED TYPE)

Check the following items, and replace the part if necessary.

- Move wheel hub assembly in the axial direction by hand. Check there is no looseness of wheel bearing.

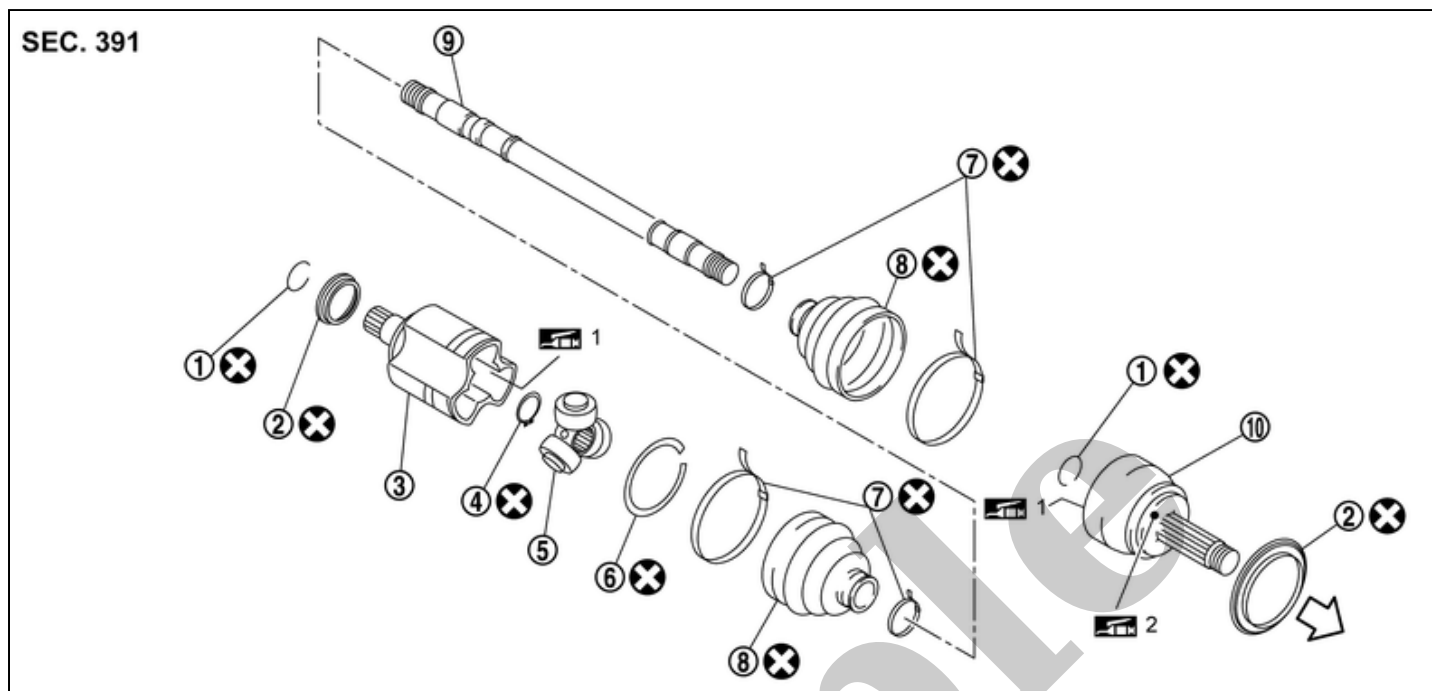
[Axial end play](#)

: Refer to [Wheel Bearing](#).

- Rotate wheel hub assembly and check there is no unusual noise or other irregular conditions. If there is any of irregular conditions, replace wheel hub assembly.

Sample

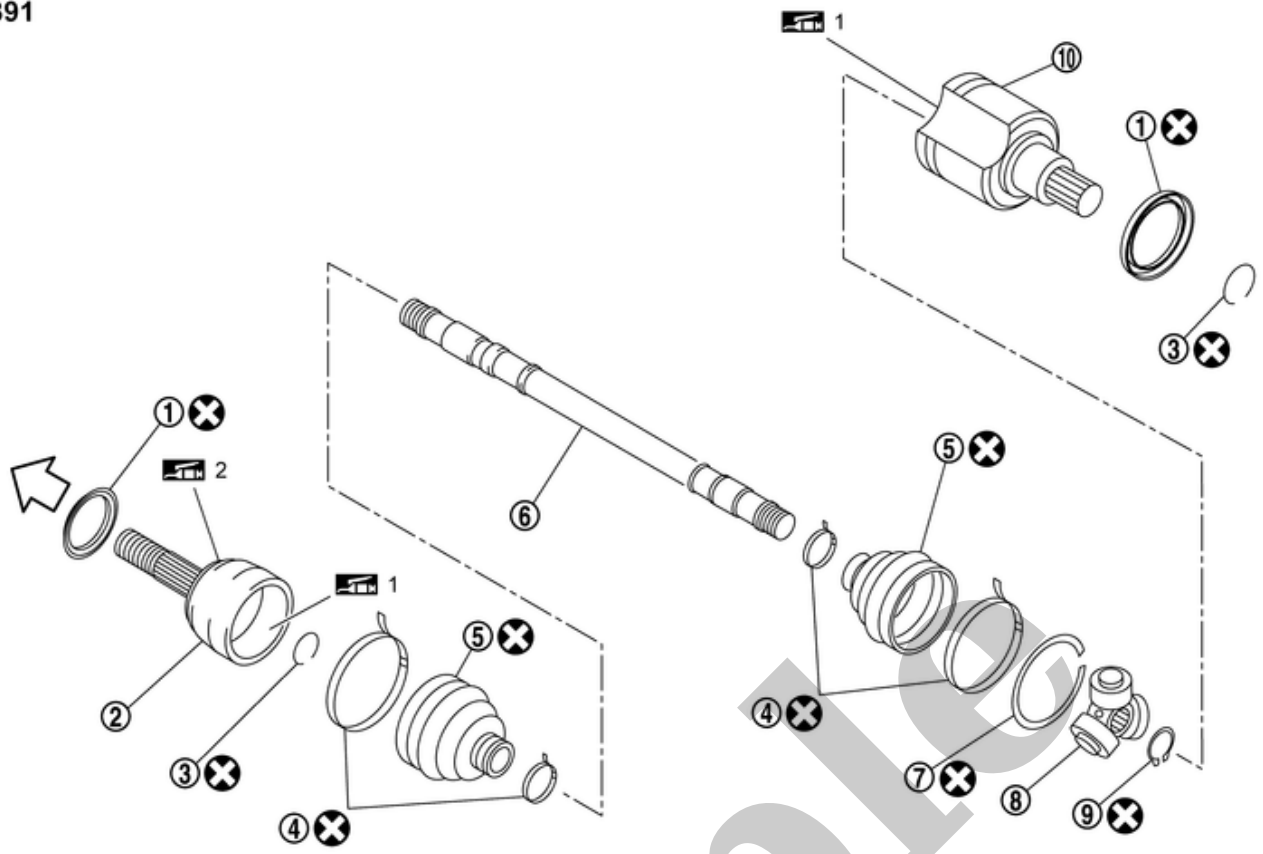
LEFT SIDE



RDE-001824721-01-000347538

①	Circular clip	②	Dust shield	③	Housing
④	Snap ring	⑤	Spider assembly	⑥	Stopper ring
⑦	Boot band	⑧	Boot	⑨	Shaft
⑩	Joint sub-assembly				
←	: Wheel side				
1	: Nissan genuine designated grease (Refer to parts catalog)				
2	: Apply paste [service parts (440037S000)]				
⊗	: Always replace after every disassembly.				

RIGHT side



RDE-001824721-02-000347539

①	Dust shield	②	Joint sub-assembly	③	Circular clip
④	Boot band	⑤	Boot	⑥	Shaft
⑦	Stopper ring	⑧	Spider assembly	⑨	Snap ring
⑩	Housing				
←	: Wheel side				
1	: Nissan genuine designated grease (Refer to parts catalog)				
2	: Apply paste [service parts (440037S000)]				
X	: Always replace after every disassembly.				

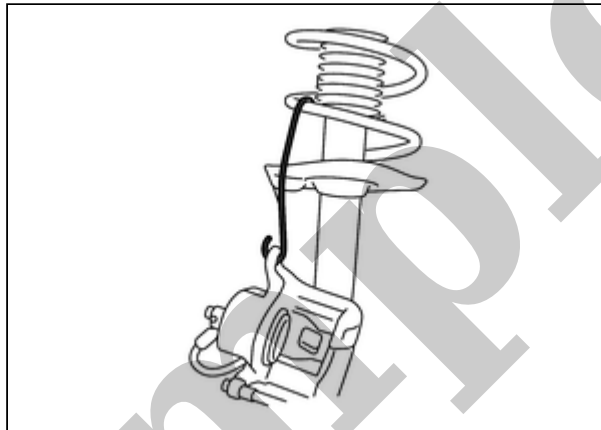
REMOVAL

1. Remove tires. Refer to [Removal & Installation](#).
2. Drain oil from the reducer. Refer to [Draining](#).
3. Remove wheel sensor from steering knuckle. Refer to [Removal & Installation](#).

CAUTION:

Do not pull on wheel sensor harness.

4. Remove lock plate from strut. Refer to [Exploded View](#).
5. Remove torque member mounting bolts, and hang torque member and brake caliper in a place that does not interfere with the work.



RPR-001932103-05-000354054

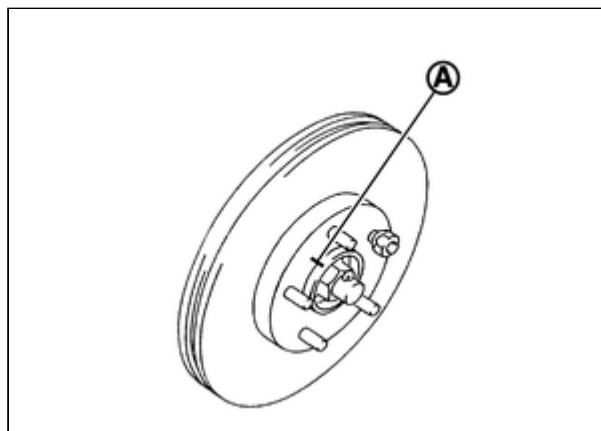
CAUTION:

Do not depress brake pedal while removing brake caliper.

6. Remove disc rotor.

CAUTION:

- When removing disc rotor, put align mark on (A) wheel hub assembly and disc rotor.



RPR-001932103-07-PDIG0066ZZ

- Never drop disc rotor.

7. Using lock nut chisel (SST: KV40108800) (A), release staked area of wheel hub lock nut.