

Your Ultimate Source for OEM Repair Manuals

FactoryManuals.net is a great resource for anyone who wants to save money on repairs by doing their own work. The manuals provide detailed instructions and diagrams that make it easy to understand how to fix a vehicle.

2015 NISSAN Murano OEM Service and Repair Workshop Manual

[Go to manual page](#)

PRECAUTIONS FOR SUPPLEMENTAL RESTRAINT SYSTEM (SRS) AIR BAG AND SEAT BELT PRE-TENSIONER : Precautions

RDE-001824732

The Supplemental Restraint System such as “AIR BAG” and “SEAT BELT PRE-TENSIONER”, used along with a front seat belt, helps to reduce the risk or severity of injury to the driver and front passenger for certain types of collisions.

Information necessary to service the system safely is included in the “SRS AIR BAG” and “SEAT BELT” sections of this Service Manual.

WARNING:

Always observe the following items for preventing accidental activation:

- To avoid rendering the SRS inoperative, which could increase the risk of personal injury or death in the event of a collision that would result in air bag inflation, it is recommended that all maintenance and repair be performed by an authorized NISSAN/INFINITI dealer.
- Improper repair, including incorrect removal and installation of the SRS, can lead to personal injury caused by unintentional activation of the system. For removal of Spiral Cable and Air Bag Module, see “SRS AIR BAG”.
- Never use electrical test equipment on any circuit related to the SRS unless instructed to in this Service Manual. SRS wiring harnesses can be identified by yellow and/or orange harnesses or harness connectors.

PRECAUTIONS WHEN USING POWER TOOLS (AIR OR ELECTRIC) AND HAMMERS

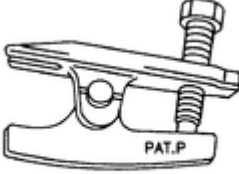
WARNING:

Always observe the following items for preventing accidental activation:

- When working near the Air Bag Diagnosis Sensor Unit or other Air Bag System sensors with the ignition/power switch ON or engine running, never use air or electric power tools or strike near the sensor(s) with a hammer. Heavy vibration could activate the sensor(s) and deploy the air bag(s), possibly causing serious injury.
- When using air or electric power tools or hammers, always switch the ignition/power switch OFF, disconnect the 12V battery or batteries, and wait at least 3 minutes before performing any service.

REAR AXLE SYSTEM : Commercial Service Tools or/and Repair Part

RDE-001824735

Tool name		Description
Ball joint remover	 <p data-bbox="715 416 999 443">RDE-001824735-01-T146</p>	Removing hub bolt

Sample

WHEEL BEARING : Service Data

RDE-001824740

Item	Standard
Axial end play	0.05 mm (0.002 in) or less

Sample

Use chart below to find the cause of the symptom. If necessary, repair or replace these parts.

Possible cause and suspected parts	Symptom						Reference
	REAR AXLE						
	Noise	Shake	Vibration	Shimmy	Judder	Poor quality ride or handling	
Improper installation, looseness	x	x	x	x	x	x	Removal and Installation
Parts interference	x	x	x	x	—	x	—
Wheel bearing damage	x	x	x	—	—	—	Periodic Maintenance Operation
REAR AXLE	x	x	x	x	x	x	—
REAR SUSPENSION	x	x	x	x	x	x	—
TIRE	x	x	x	x	x	x	NVH in WT section
ROAD WHEEL	x	x	—	x	x	x	NVH in WT section
BRAKE	x	x	—	x	x	—	NVH in BR section

x: Applicable, —: Not applicable

COMPONENT PART

Check the mounting conditions (looseness, back lash) of each component and component conditions (wear, damage) are normal.

WHEEL HUB ASSEMBLY (BEARING-INTEGRATED TYPE)

Check the following items, and replace the part it necessary.

1 Move wheel hub assembly in the axial direction by hand. Check there is no looseness of wheel bearing.

[Axial end play](#)

: Refer to [Wheel Bearing](#).

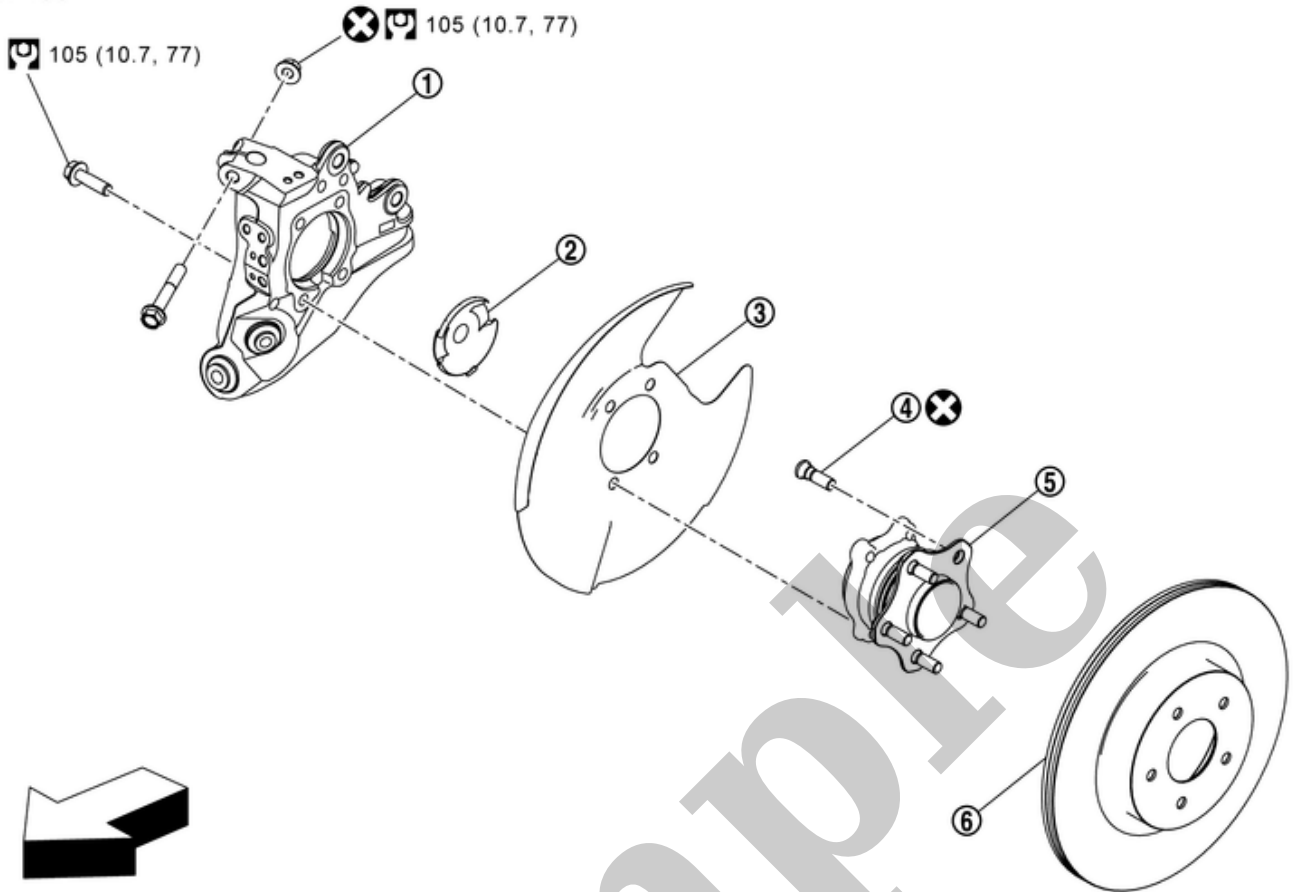
2 Rotate wheel hub assembly and check there is no unusual noise or other irregular conditions. If there is any of irregular conditions, replace wheel hub assembly.

Sample

REAR WHEEL HUB : Exploded View

RDE-001824737

SEC. 430



RDE-001824737-01-000392916

①	Axle housing	②	Hub cap	③	Back plate
④	Hub bolt	⑤	Wheel hub and bearing assembly	⑥	Disc rotor
←	: Vehicle front				
🔧	: N·m (kg-m, ft-lb)				
⊗	: Always replace after every disassembly.				

REMOVAL

1 Remove tires. Refer to [Exploded View](#).

2 Remove parking brake actuator harness and rear wheel sensor harness. Refer to [Removal & Installation](#).

CAUTION:

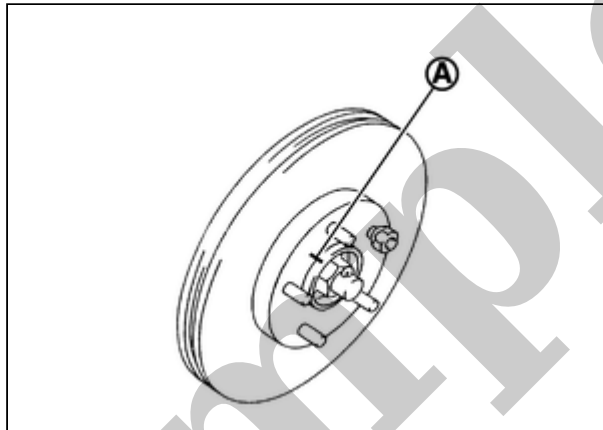
Never pull rear wheel sensor harness.

3 Remove caliper assembly. Hang caliper assembly in a place where it will not interfere with work. Refer to [Exploded View](#).

CAUTION:

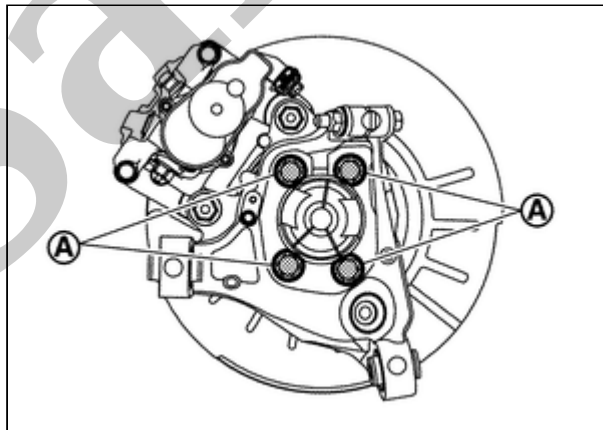
Never depress brake pedal while brake caliper is removed.

4 Remove disc rotor and wheel hub assembly. If disc rotor is reused, put align marks (A) on wheel hub and disc rotor before removing the disc rotor.



RPR-001824738-01-PDIG006ZZ

5 Remove mounting bolts (A) of wheel hub.



RPR-001824738-02-000347563

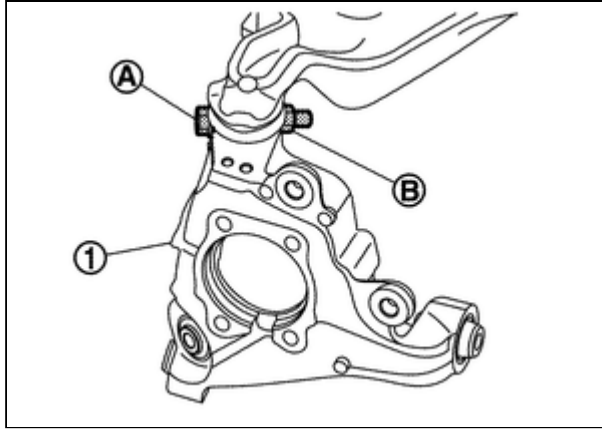
6 Remove wheel hub, back plate, and hub cap.

7 Remove radius rod. Refer to [Removal & Installation](#).

8 Remove front lower link. Refer to [Removal & Installation](#).

9 Remove coil spring. Refer to [Removal & Installation](#).

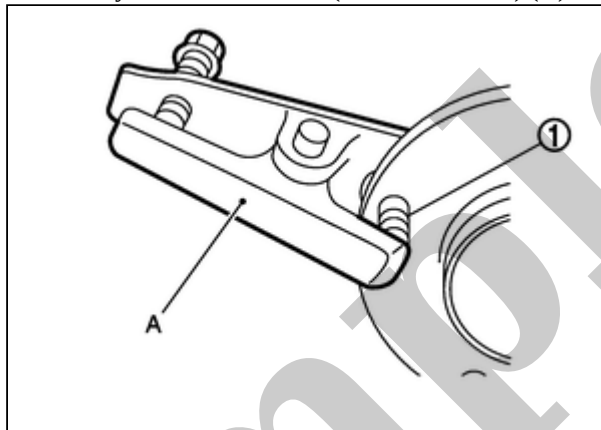
10 Remove rear suspension arm mounting bolt (A) and nut (B) from axle housing (1).



RPR-001824738-05-000312906

11 Separate axle housing from rear suspension arm.

12 Remove hub bolt ① from wheel hub assembly with ball remover (commercial tool) (A).



RPR-001824738-03-PDIF0299ZZ

CAUTION:

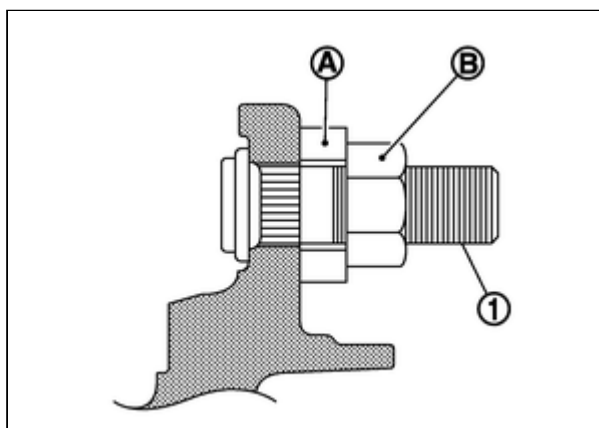
- Remove hub bolt, only when necessary.
- Never hammer hub bolt to avoid impact to wheel hub assembly.
- Pull out hub bolt in a direction perpendicular to wheel hub assembly.

13 Perform inspection after removal. Refer to [Inspection](#).

INSTALLATION

Note the following, and install in the reverse order of removal.

- Set a washer (A) to hub bolt ① and install hub bolt by using the tightening force of nut (B).

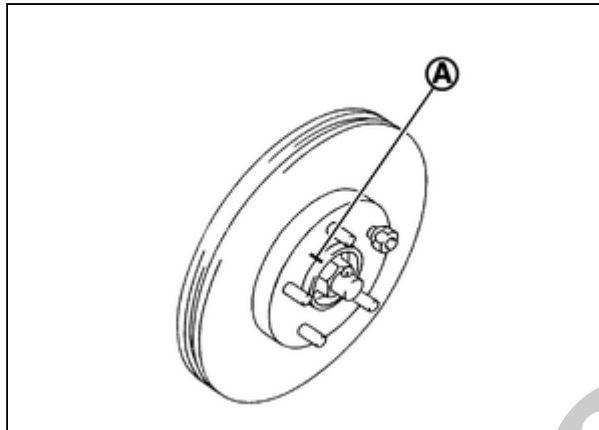


RPR-001824738-04-PDIF0300ZZ

CAUTION:

- Check that there is no clearance between wheel hub assembly and hub bolt.
- Never reuse hub bolt.

- When reusing disc rotor and wheel hub assembly, align marks (A) put during removal of them.



RPR-001824738-06-PDIG0066ZZ

- Perform inspection after installation. Refer to [Inspection](#).

Sample