

Your Ultimate Source for OEM Repair Manuals

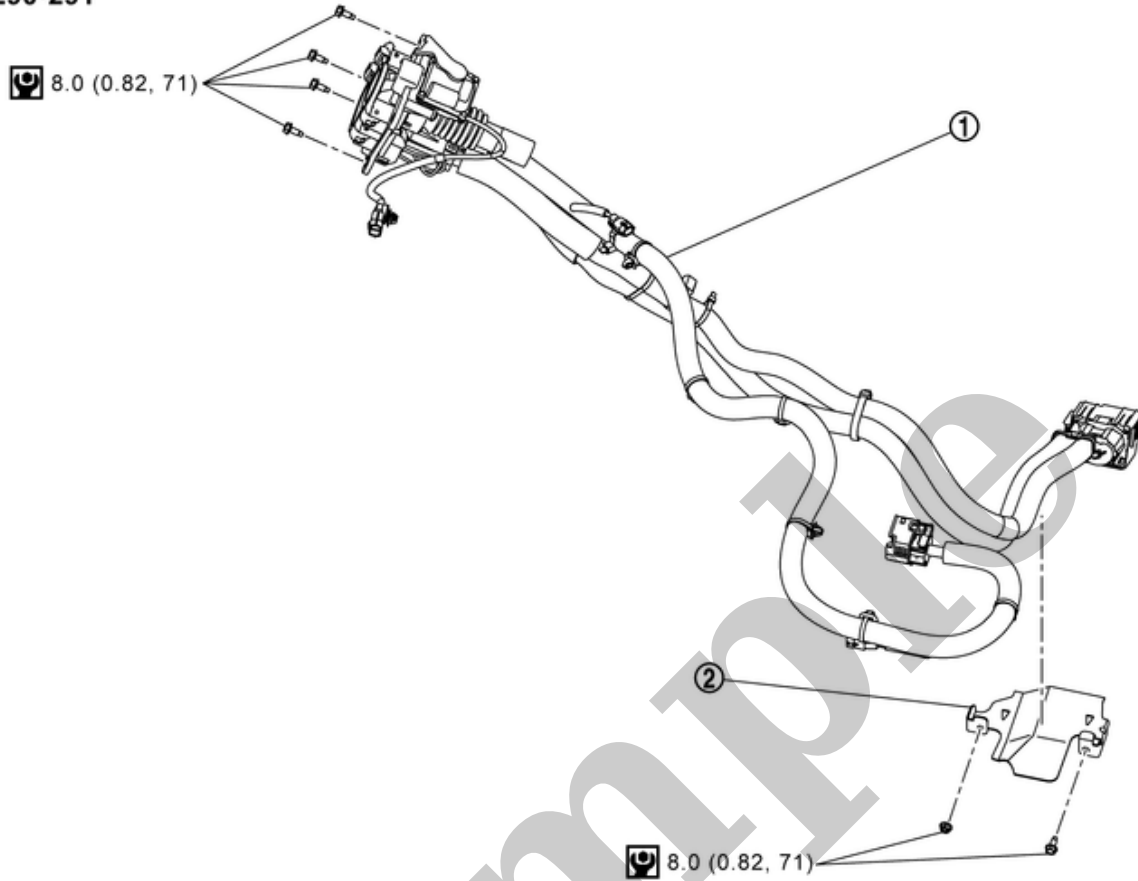
FactoryManuals.net is a great resource for anyone who wants to save money on repairs by doing their own work. The manuals provide detailed instructions and diagrams that make it easy to understand how to fix a vehicle.

2015 NISSAN 370z Nismo OEM Service and Repair Workshop Manual

[Go to manual page](#)

REMOVAL

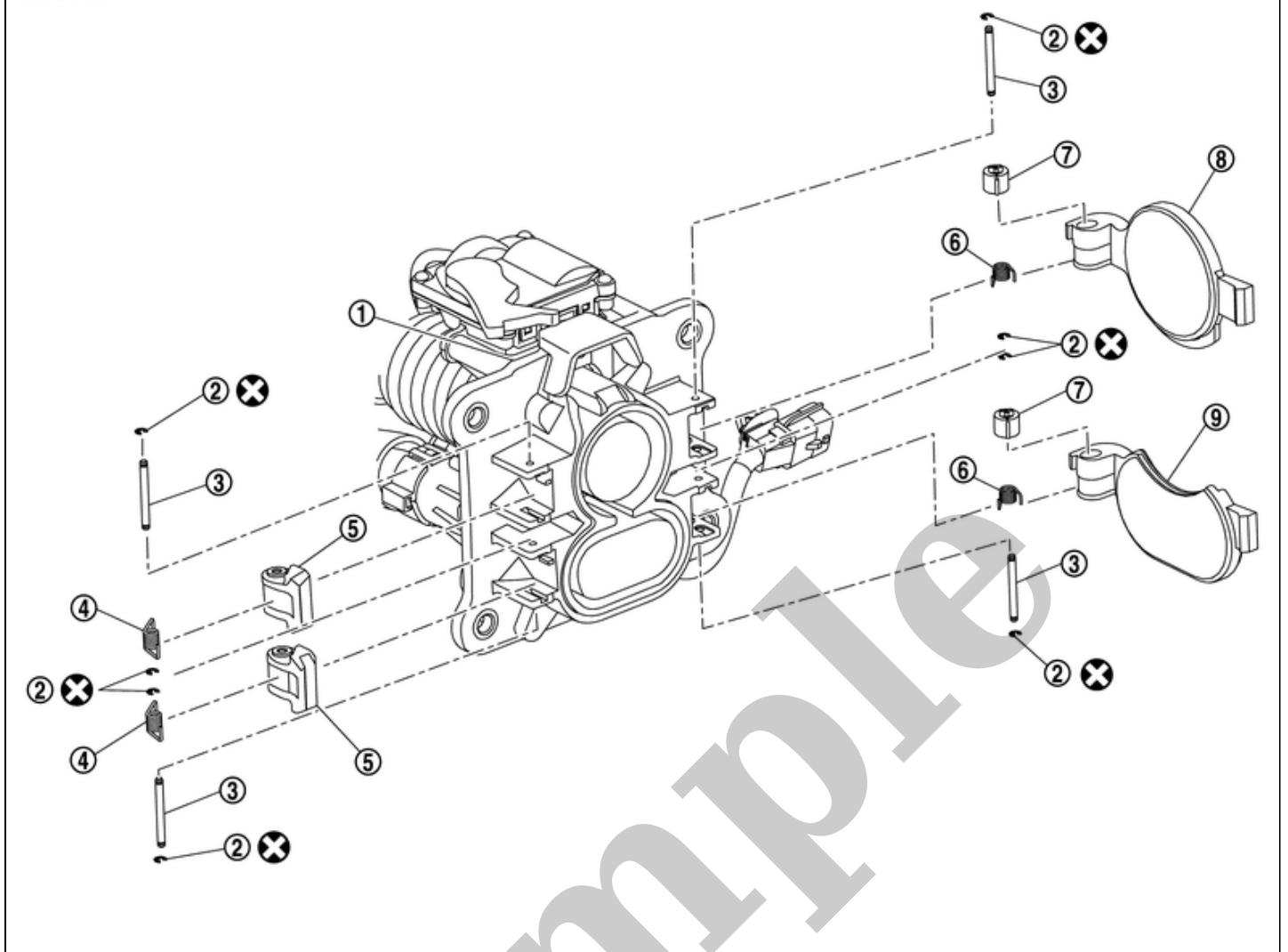
SEC. 290•291



RDE-001980201-01-000397631

①	Charge port	②	Bracket		
	: N·m (kg-m, in-lb)				

DISASSEMBLY



RDE-001980201-02-000422743

①	Charge port	②	Clip	③	Pin
④	Spring (small)	⑤	Lever	⑥	Spring (large)
⑦	Damper	⑧	Port cap 1	⑨	Port cap 2
⊗	Always replace after every disassembly.				

DANGER:

Since hybrid vehicles and electric vehicles contain a high voltage battery, there is the risk of electric shock, electric leakage, or similar accidents if the high voltage component and vehicle are handled incorrectly. Be sure to follow the correct work procedures when performing inspection and maintenance.

WARNING:

- Be sure to remove the service plug in order to disconnect the high voltage circuits before performing inspection or maintenance of high voltage system harnesses and parts.
- The removed service plug must always be carried in a pocket of the responsible worker or placed in the tool box during the procedure to prevent the plug from being connected by mistake.
- Be sure to wear insulating protective equipment consisting of glove, shoes, face shield and glasses before beginning work on the high voltage system.
- Never allow workers other than the responsible person to touch the vehicle containing high voltage parts. To keep others from touching the high voltage parts, these parts must be covered with an insulating sheet except when using them.
- Refer to [HIGH VOLTAGE PRECAUTIONS : Precautions](#).

CAUTION:

Never bring the vehicle into the READY status with the service plug removed unless otherwise instructed in the Service Manual. A malfunction may occur if this is not observed.

REMOVAL

WARNING:

Disconnect high voltage. Refer to [HOW TO DISCONNECT HIGH VOLTAGE : Precautions](#).

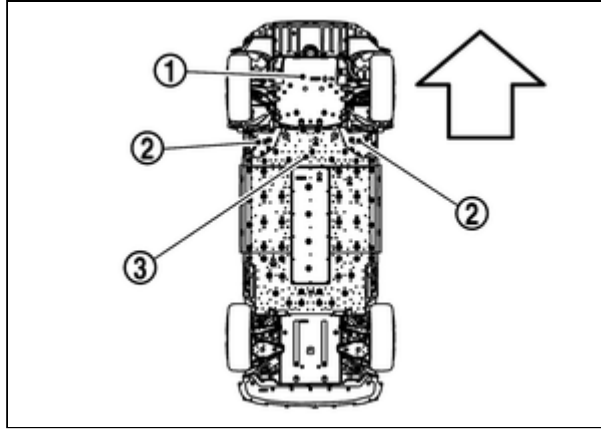
1. Check voltage in high voltage circuit. (Check that condenser are discharged.)

DANGER:

Touching high voltage components without using the appropriate protective equipment will cause electrocution.



2. Discharge the refrigerant gas. Refer to [Recycle Refrigerant](#).
3. Remove the Li-ion battery undercover lid (Front RH) and the Li-ion battery undercover lid (Front LH).
4. Lift up the vehicle and remove the front undercover rear **①**, the Li-ion battery undercovers front (RH,LH) **②** and the Li-ion battery under cover front **③**. Refer to [Exploded View](#).

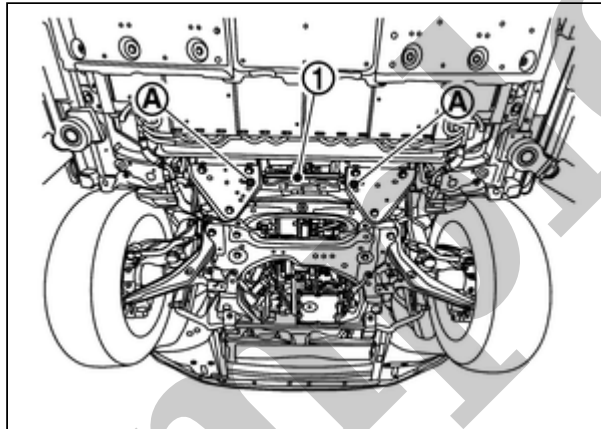


RPR-001980200-01-000346940



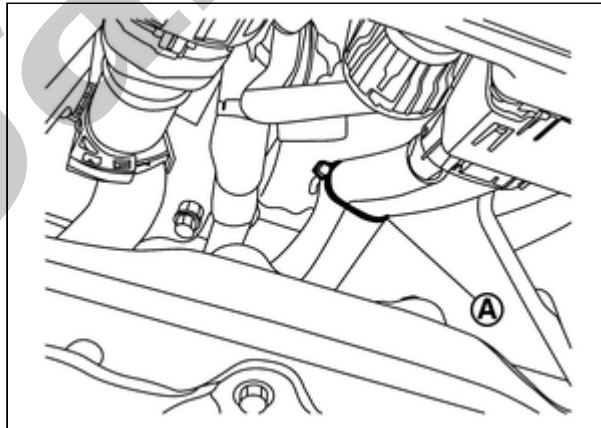
:Vehicle front

5. Remove the lack mounting fixing bolt (A) and then remove the lack mounting (1).



RPR-001980200-02-000346787

6. Remove the quick charge port high voltage harness clamp (A).



RPR-001980200-03-000346788

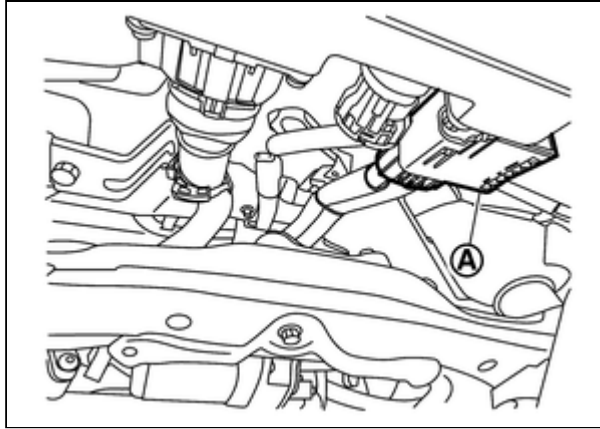
DANGER:



Touching high voltage components without using the appropriate protective equipment will cause electrocution.



7. Disconnect the quick charge port high voltage harness connector (A) from the Li-ion battery.



RPR-001980200-04-000346789

DANGER:

-  Touching high voltage components without using the appropriate protective equipment will cause electrocution.

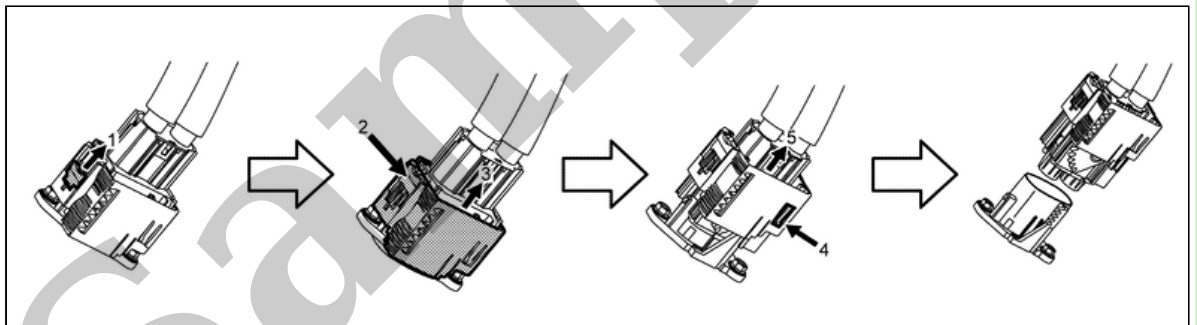


-  Immediately insulate disconnected quick charge port high voltage harness connector and terminals with insulating tape, since there is the risk of electric shock.




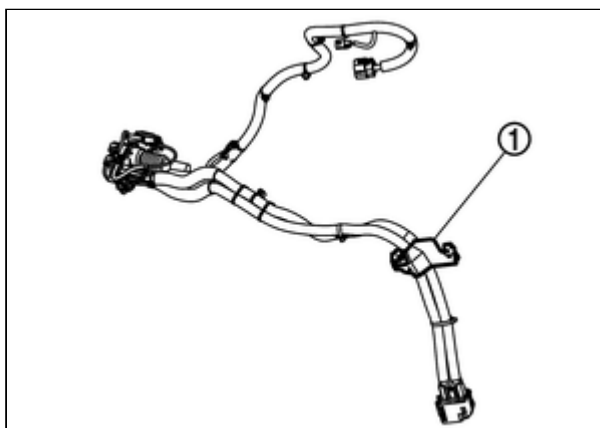
NOTE:

Disconnect the quick charge high voltage harness connector as per the following steps.



RPR-001980200-05-000346880

8. Remove the high voltage power delivery assembly. Refer to [HIGH VOLTAGE POWER DELIVERY ASSEMBLY :Removal & Installation](#).
9. Remove the A/C unit assembly. Refer to [Removal & Installation](#).
10. Remove the bracket .



RPR-001980200-06-000397635

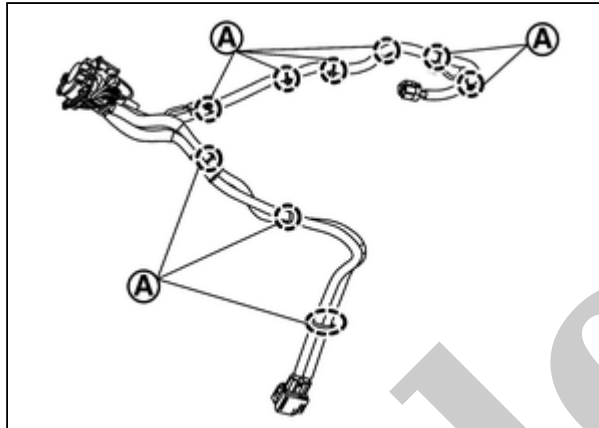
DANGER:



Touching high voltage components without using the appropriate protective equipment will cause electrocution.



11. Remove the charge port high voltage harness clip (A).



RPR-001980200-07-000397638

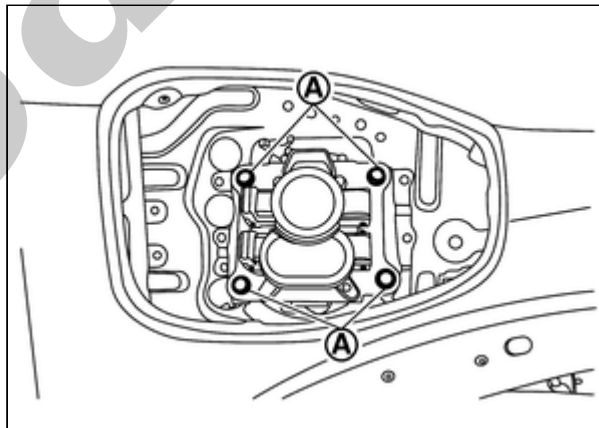
DANGER:



Touching high voltage components without using the appropriate protective equipment will cause electrocution.



12. Remove the charge port lid. Refer to [Removal & Installation](#).
13. Remove the charge port mounting bolt (A).



RPR-001980200-08-000397643

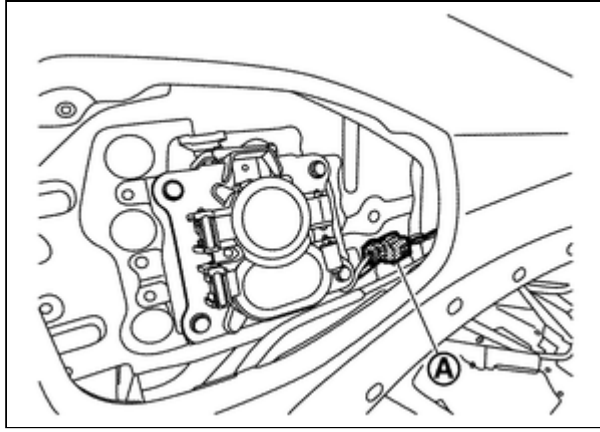
DANGER:



Touching high voltage components without using the appropriate protective equipment will cause electrocution.



14. Remove the charge port high voltage harness connector (A).



RPR-001980200-09-000397648

15. Remove the charge port high voltage harness from the vehicle.

DANGER:



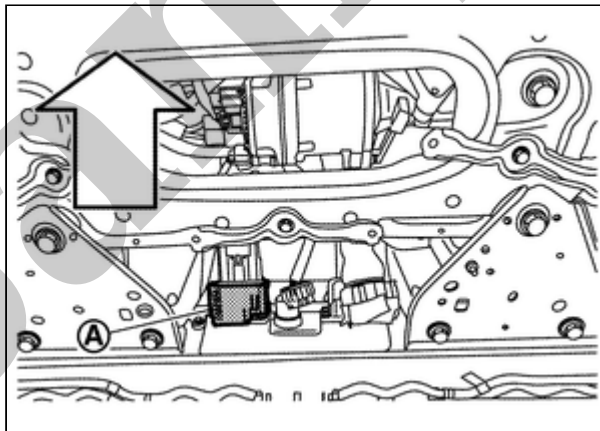
Touching high voltage components without using the appropriate protective equipment will cause electrocution.



INSTALLATION

Note the following and install in the reverse order of removal while be careful below point.

1. Install the quick charge port high voltage harness connector **A**.



RPR-001980200-10-000346883



:Vehicle front

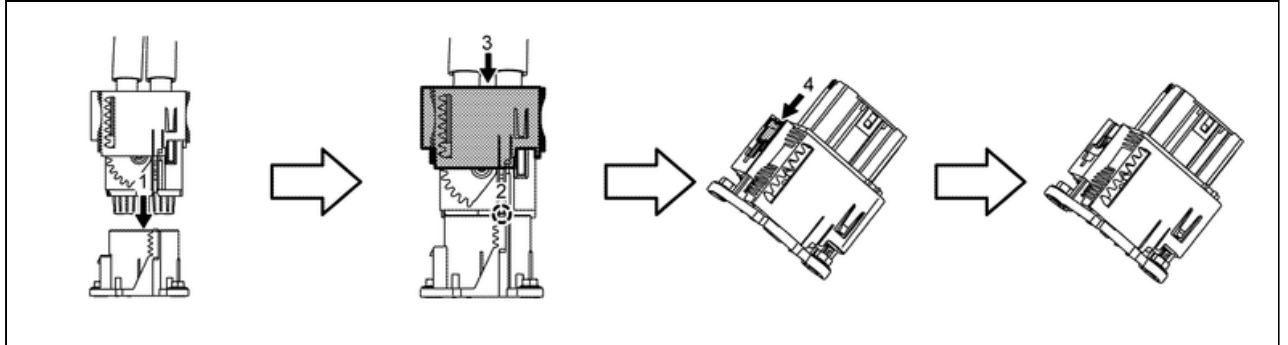
DANGER:



Touching high voltage components without using the appropriate protective equipment will cause electrocution.



- Install the quick charge port high voltage harness as per the following steps.

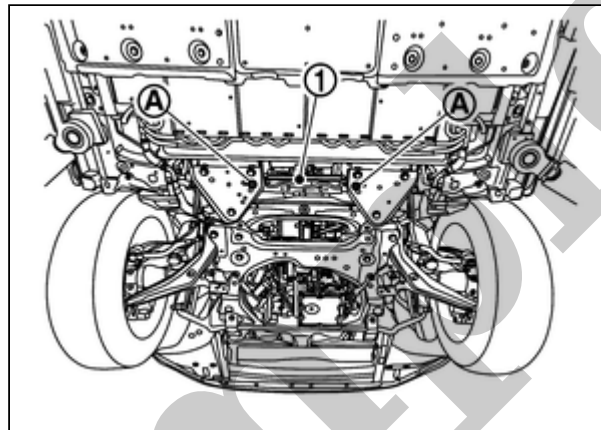


RPR-001980200-11-000346881

CAUTION:

Be sure to inspect the harness connector fitting status is properly after install the quick charge port high voltage harness connector. Refer to [CHARGE PORT : Inspection](#).

2. Install the lack mounting ①.



RPR-001980200-12-000346787

Lack mounting fixing bolt 

:65.0N·m (6.6 kg-m)

DISASSEMBLY

DANGER:



Since hybrid vehicles and electric vehicles contain a high voltage battery, there is the risk of electric shock, electric leakage, or similar accidents if the high voltage component and vehicle are handled incorrectly. Be sure to follow the correct work procedures when performing inspection and maintenance.

WARNING:

- Be sure to remove the service plug in order to disconnect the high voltage circuits before performing inspection or maintenance of high voltage system harnesses and parts.
- The removed service plug must always be carried in a pocket of the responsible worker or placed in the tool box during the procedure to prevent the plug from being connected by mistake.
- Be sure to wear insulating protective equipment consisting of glove, shoes, face shield and glasses before beginning work on the high voltage system.
- Never allow workers other than the responsible person to touch the vehicle containing high voltage parts. To keep others from touching the high voltage parts, these parts must be covered with an insulating sheet except when using them.
- Refer to [PRECAUTIONS FOR HIGH VOLTAGE : Precautions](#).

CAUTION:

Never bring the vehicle into the READY status with the service plug removed unless otherwise instructed in the Service Manual. A malfunction may occur if this is not observed.

WARNING:

Disconnect high voltage. Refer to [HOW TO DISCONNECT HIGH VOLTAGE : Precautions](#).

WARNING:



To prevent electric shock, wear insulated protective gear and use insulated tools when work on the vehicle.



CAUTION:

Never damage charge port.

COMMON WORK



NOTE:

Port cap and lever disassembly does not require removal of the charge port from the vehicle.

1 Remove the charge port lid. Refer to [Removal & Installation](#).

2 Apply vinyl tape or equivalent (A) to protect the charge port.