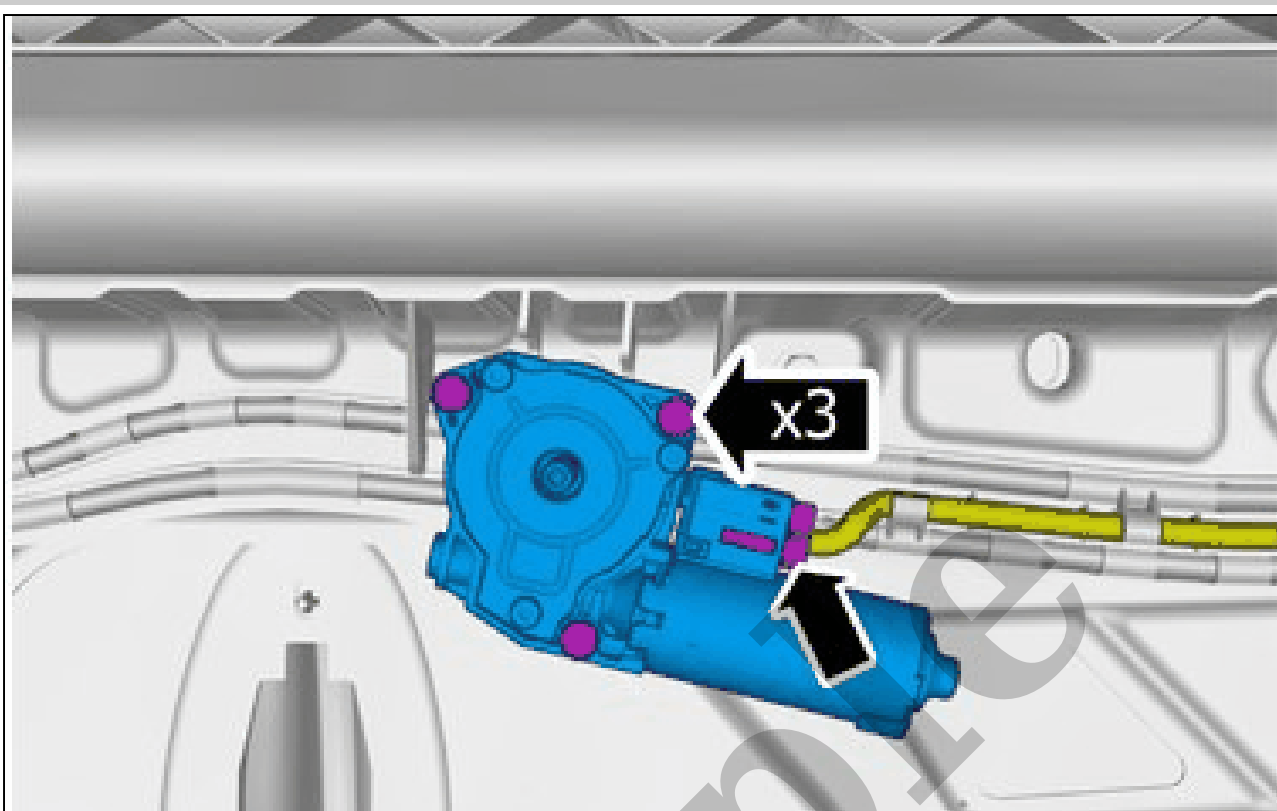


# Your Ultimate Source for OEM Repair Manuals

FactoryManuals.net is a great resource for anyone who wants to save money on repairs by doing their own work. The manuals provide detailed instructions and diagrams that make it easy to understand how to fix a vehicle.

## 2014 VOLVO V40 OEM Service and Repair Workshop Manual

[Go to manual page](#)



Courtesy of VOLVO CARS CORPORATION

Disconnect the connector.  
Remove the screws.

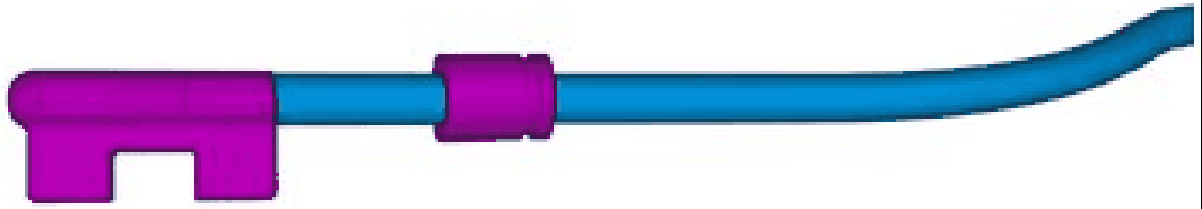
### **SUN VISOR / INNER COVER ELECTRIC MOTOR / CONTROL UNIT > SUN VISOR / INNER COVER ELECTRIC MOTOR / CONTROL UNIT (SRM) [2018-2022] > INSTALLATION**

To install, reverse the removal procedure.  
Perform electric motor/Sun Roof Module (SRM), calibration. Refer to: ELECTRIC MOTOR / SUN ROOF  
MODULE

### **SUN VISOR/INNER COVER SUN ROOF > SUN VISOR/INNER COVER SUN ROOF [2018-2022] > REMOVAL**

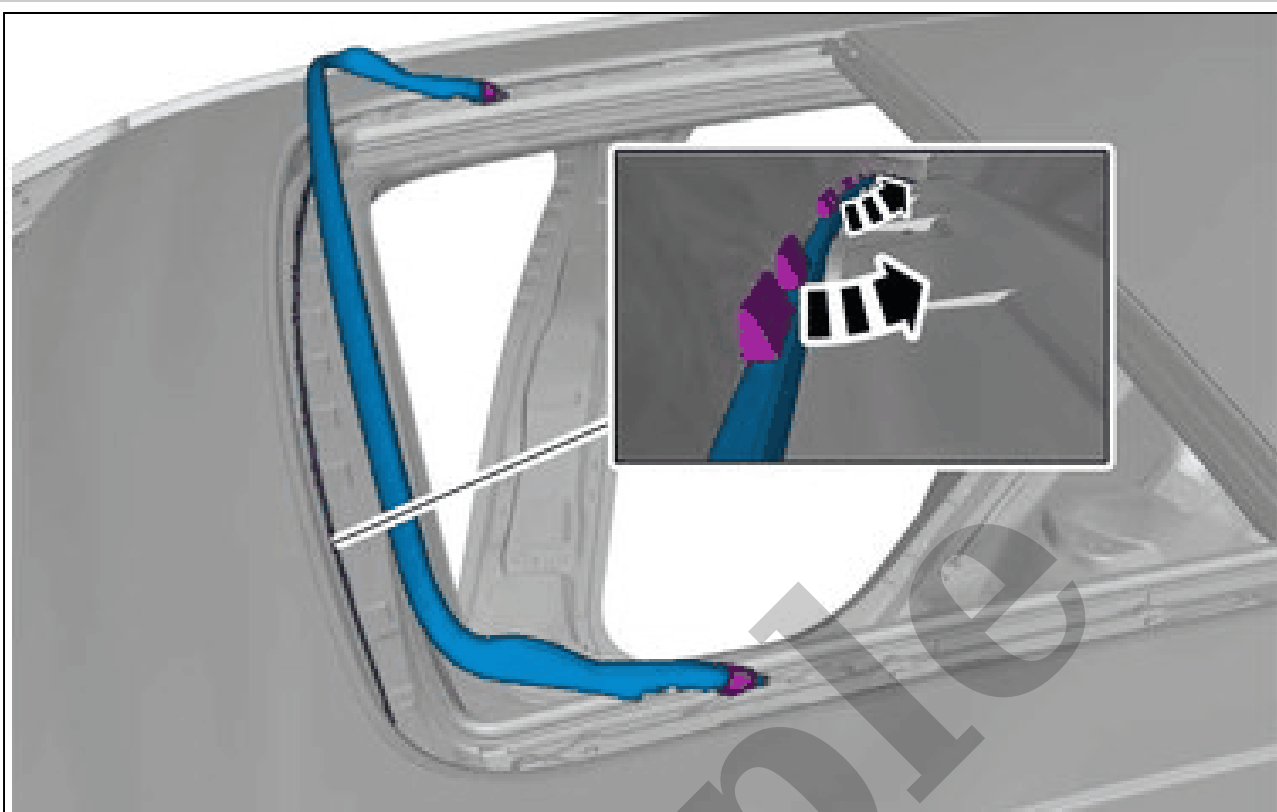
**CAUTION:** *Extreme cleanliness must be exercised when  
handling these components.*

Remove the headlining. Refer to: HEADLINING

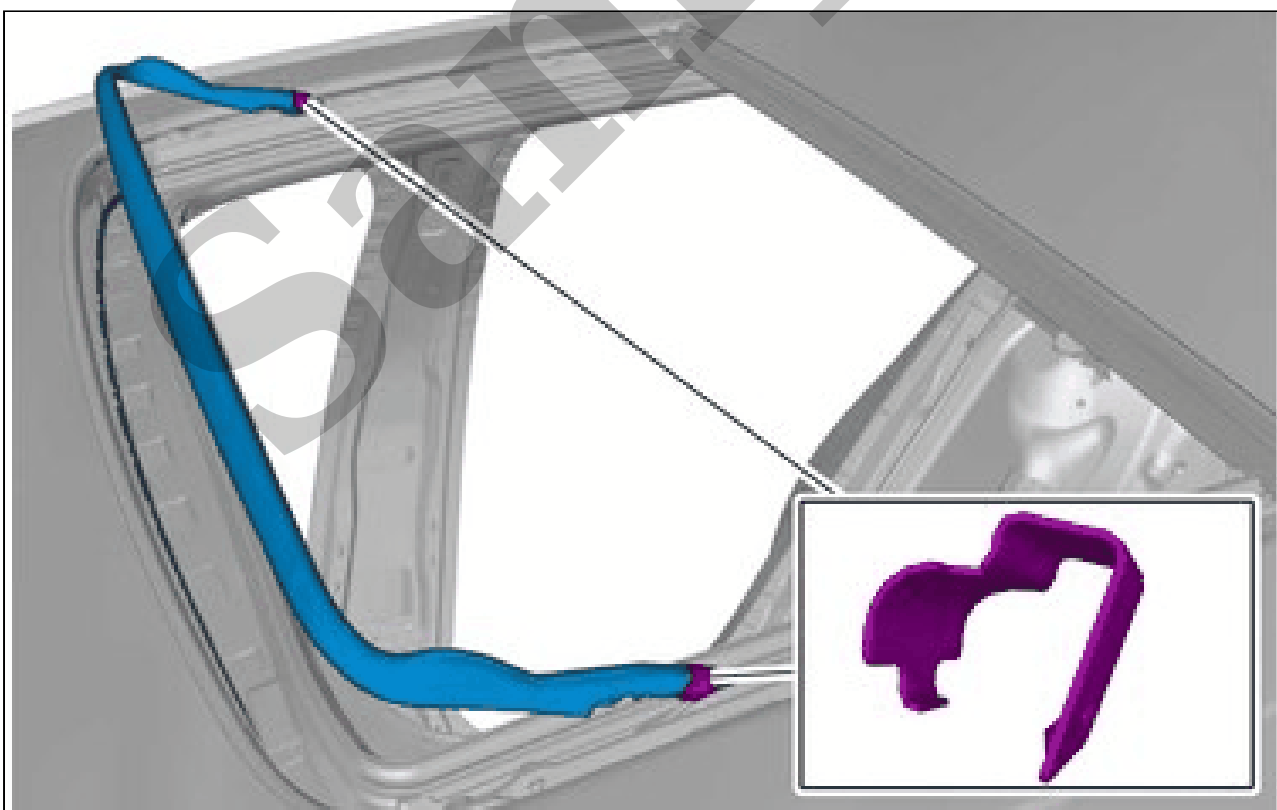


Courtesy of VOLVO CARS CORPORATION

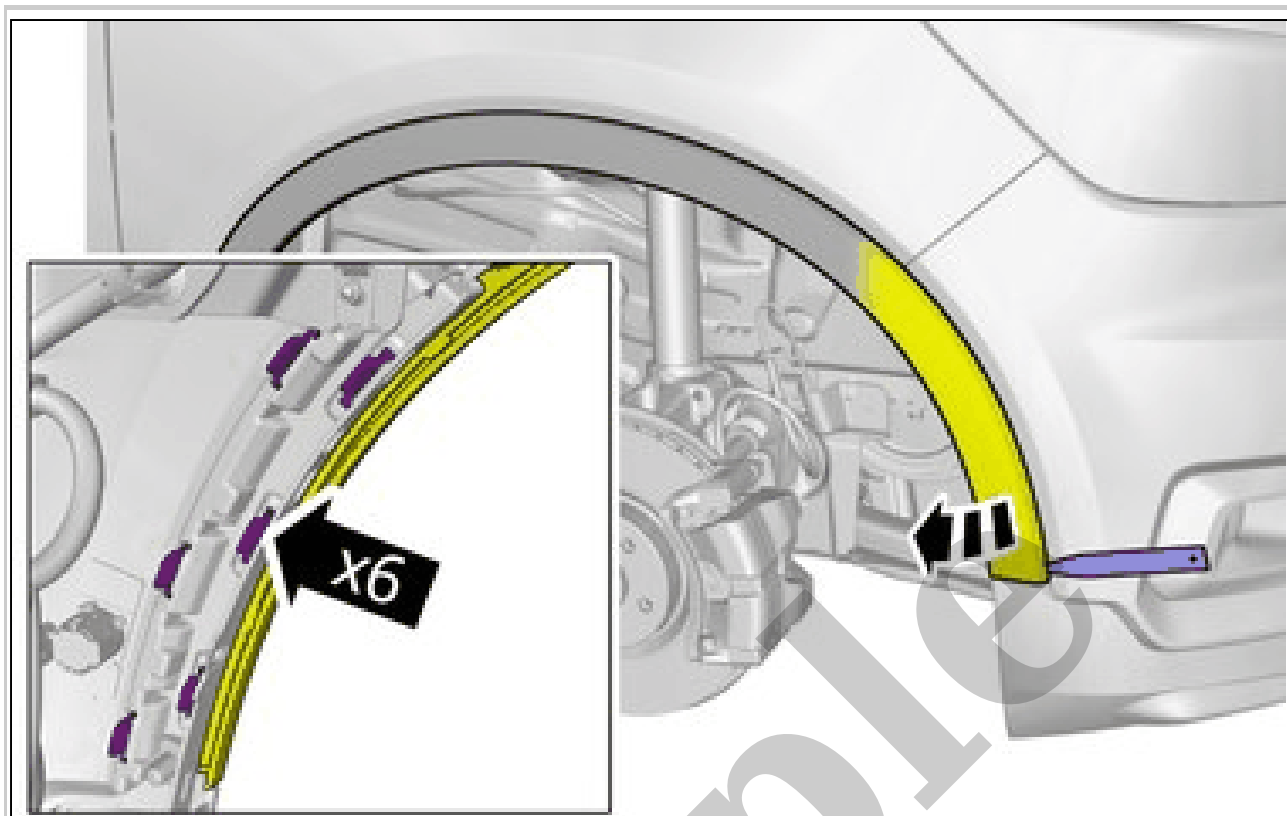
**NOTE:** *Orientation view*



Courtesy of VOLVO CARS CORPORATION



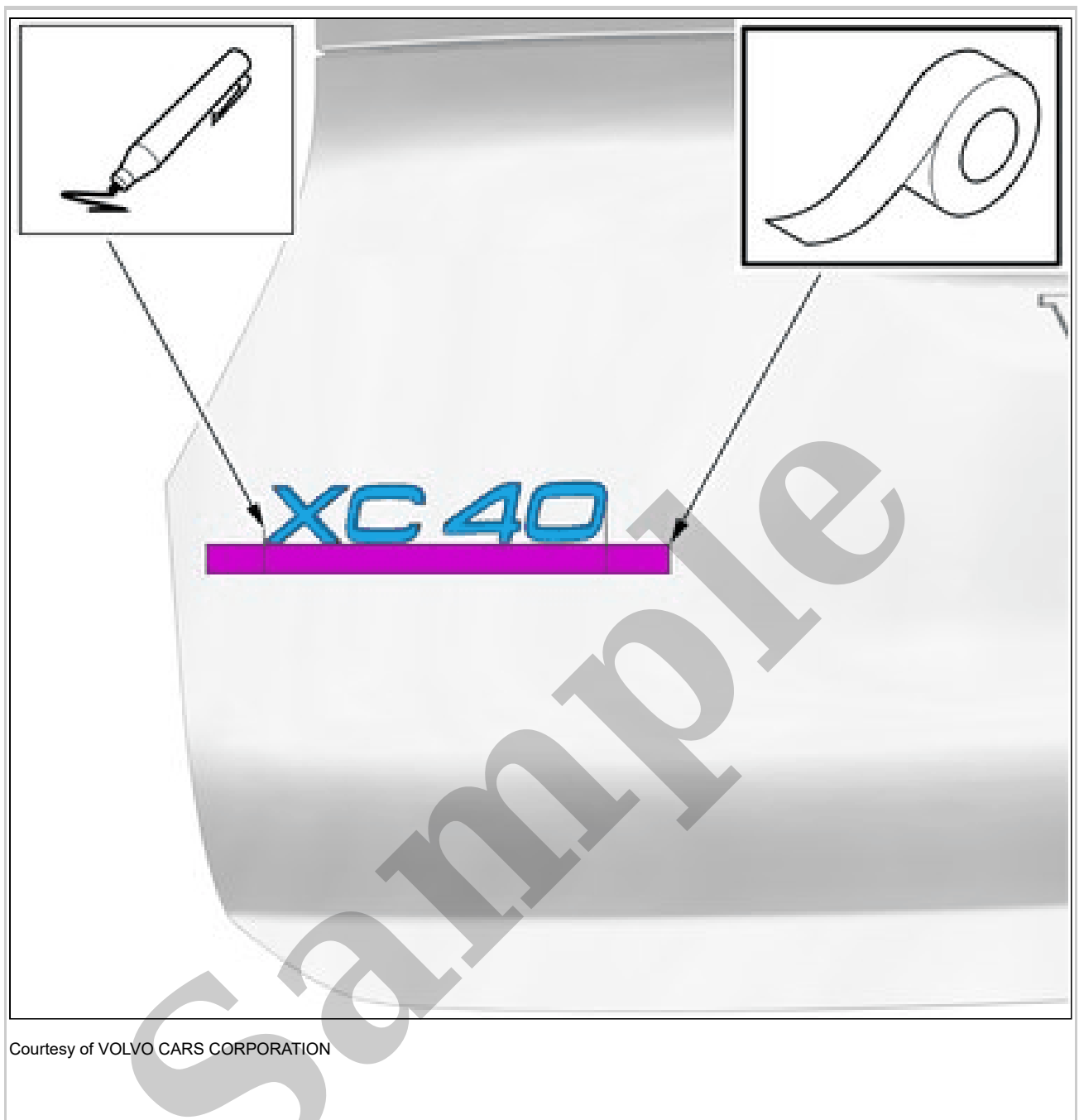
Courtesy of VOLVO CARS CORPORATION



Courtesy of VOLVO CARS CORPORATION

**CAUTION:** Make sure not to damage painted surfaces.

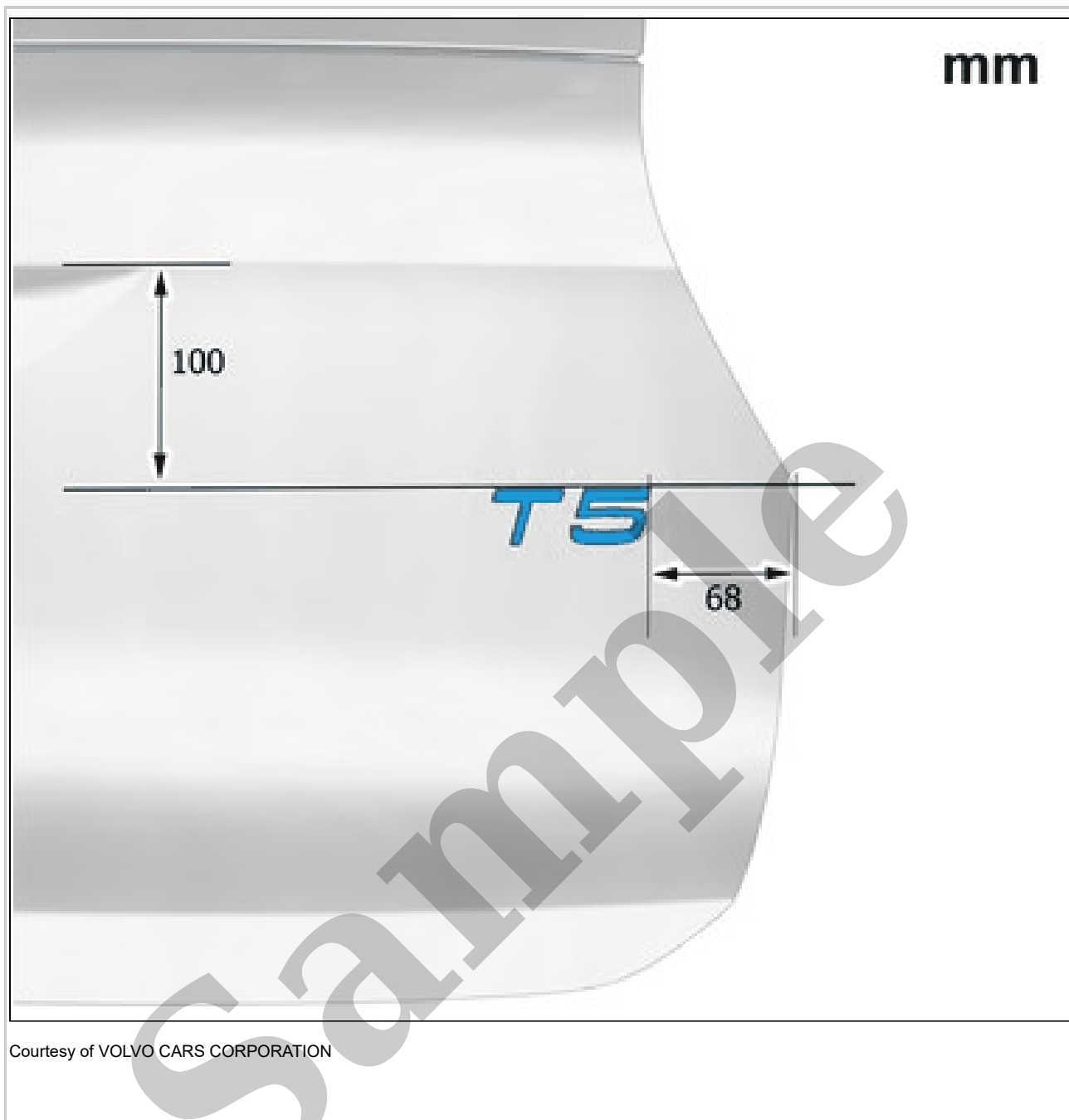
Remove the part carefully



**HINT: Mark the location of the component.**

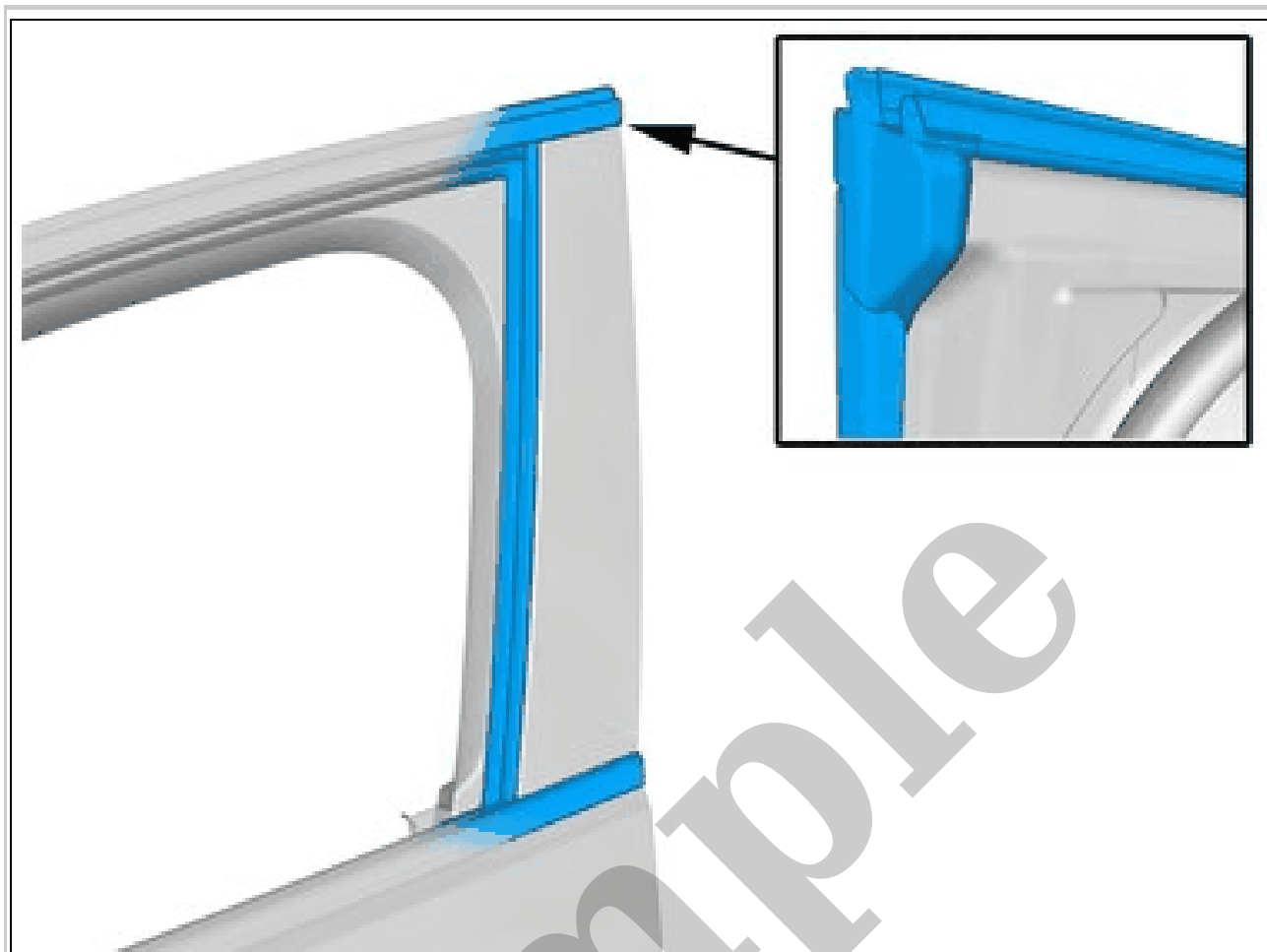
Use appropriate tape to mark the position.

Follow the instructions regarding components with double-sided adhesive tape. Refer to:  
COMPONENTS WITH DOUBLE-SIDED TAPE



## **OUTER FRONT SIDE DOOR TRIM PANEL > OUTER FRONT SIDE DOOR TRIM PANEL [2018-2022] > REMOVAL**

Remove panel side door front. Refer to: PANEL FRONT DOOR



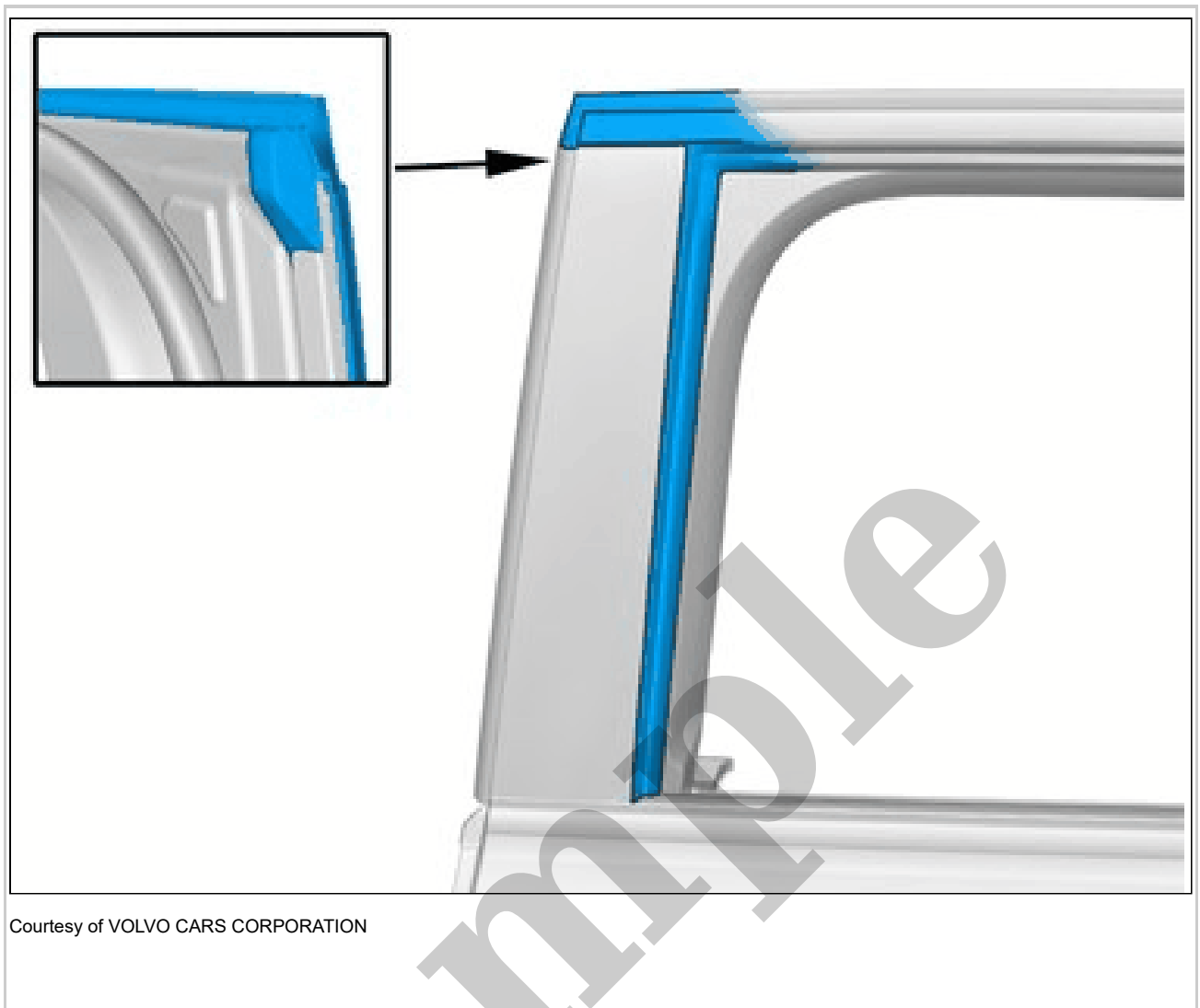
Courtesy of VOLVO CARS CORPORATION

During installation, make sure that the sealing strip is correctly positioned.  
Note the position.  
To install, reverse the removal procedure.

## **OUTER REAR SIDE DOOR TRIM PANEL > OUTER REAR SIDE DOOR TRIM PANEL [2018-2022] > REMOVAL**

Remove window side door rear. Refer to: WINDOW, REAR DOOR



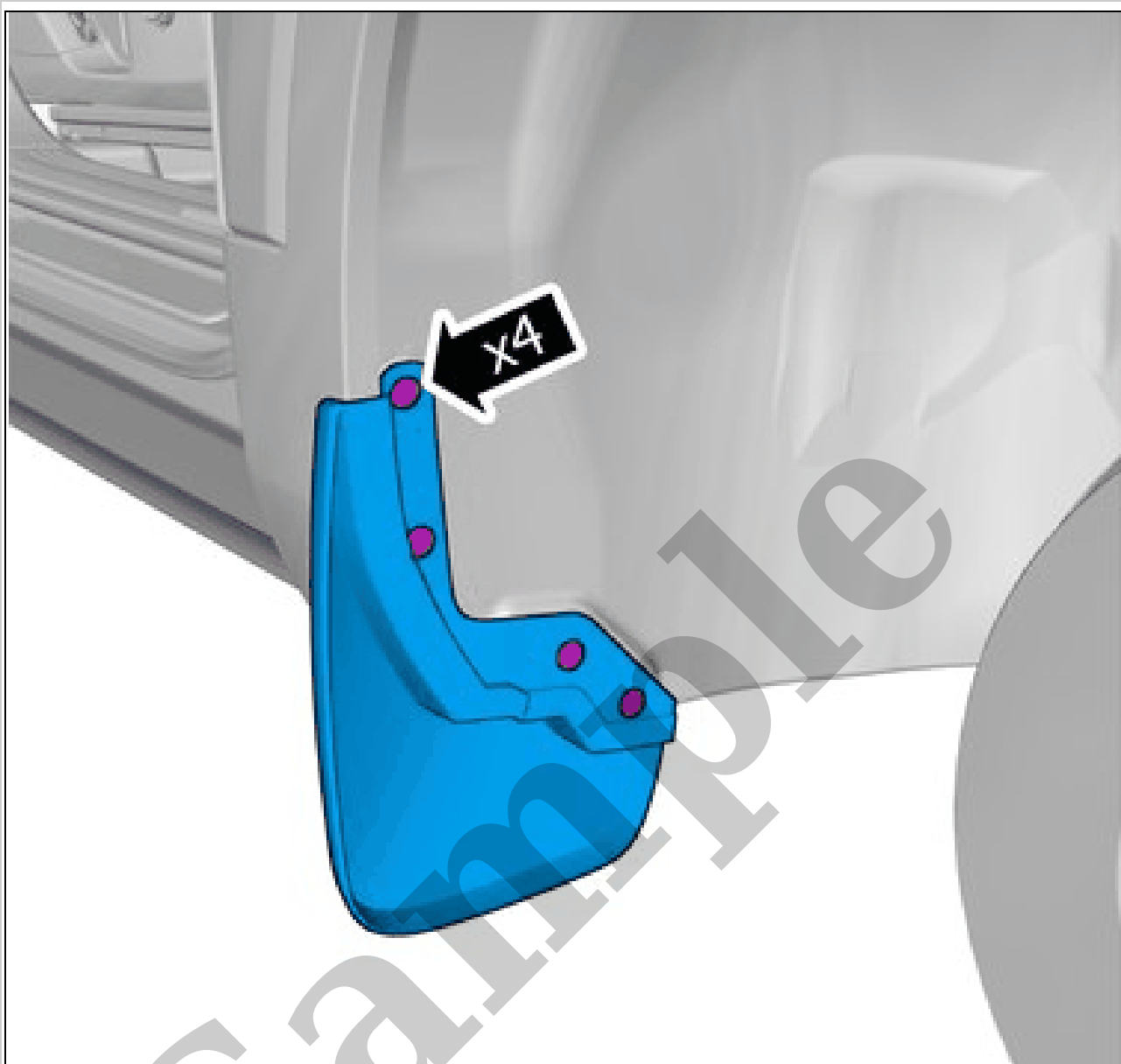


Courtesy of VOLVO CARS CORPORATION

During installation, make sure that the sealing strip is correctly positioned.  
Note the position.  
To install, reverse the removal procedure.

### **SILL PANEL > SILL PANEL [2018-2022] > REMOVAL**

Remove relevant side wheel. Refer to: WHEELS



Courtesy of VOLVO CARS CORPORATION

Remove the screws.  
Remove the marked part.