

Your Ultimate Source for OEM Repair Manuals

FactoryManuals.net is a great resource for anyone who wants to save money on repairs by doing their own work. The manuals provide detailed instructions and diagrams that make it easy to understand how to fix a vehicle.

2014 Nissan Xterra Service and Repair Manual

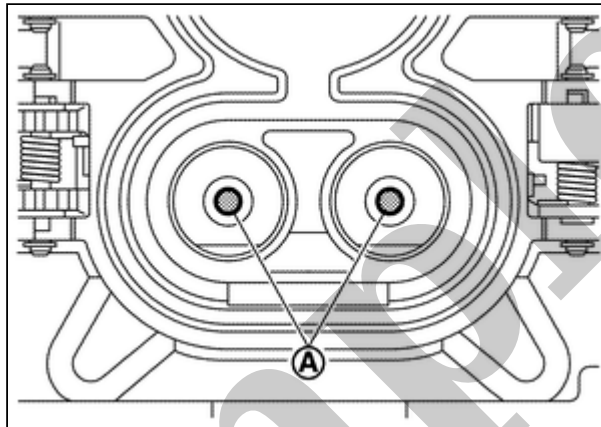
[Go to manual page](#)

INSPECTION PROCEDURES

Quick Charge Port

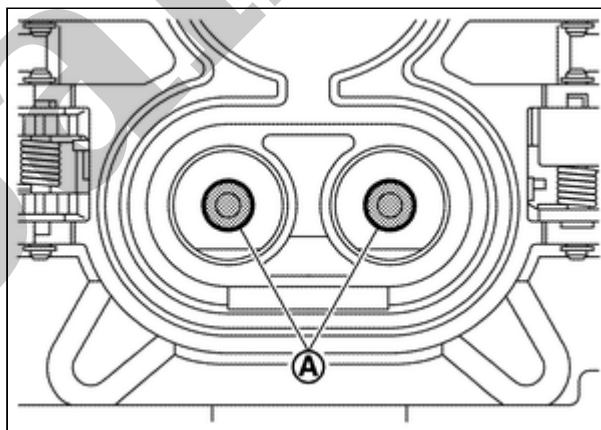
1 Perform the following visual inspections.

- Dust and foreign matter in the quick charge port and normal charge port.
- Damage in the quick charge port and normal charge port.
- Malfunction in opening/closing the charge port caps and looseness when closed and locked.
- Check that the quick charge port terminals (A) are not bent.



RPR-001824611-04-000422738

- Check that the contact prevention cap (A) is not missing.



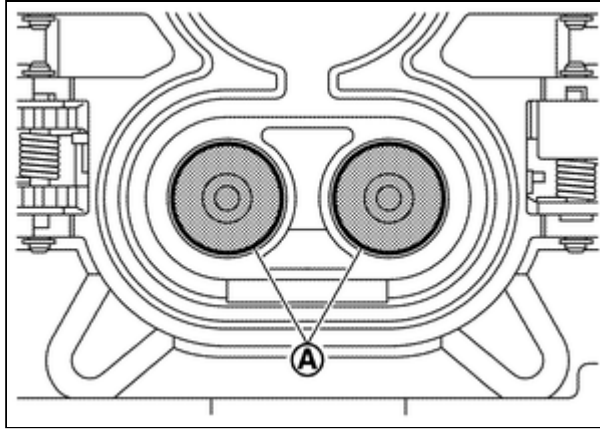
RPR-001824611-01-000422739



NOTE:

If it is missing, it is extremely difficult to engage the charge connector.

- Check that the quick charge port terminals (A) are not welded.

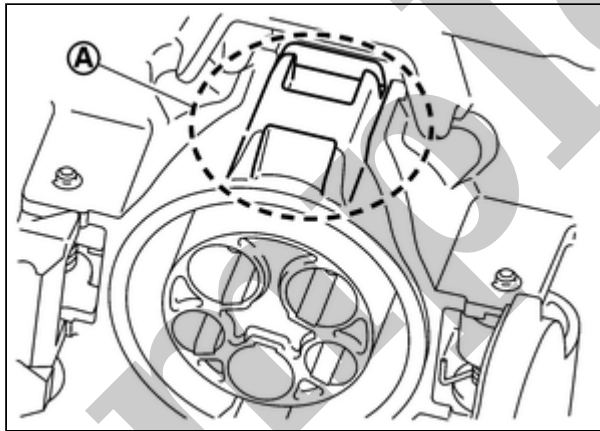


RPR-001824611-12-000422740

CAUTION:

If they are welded, inspect the quick charge gun used for the last charge, and replace the quick charge port. For replacement of the quick charge port, refer to [CHARGE PORT : Removal & Installation](#).

- Check that there is no irregular wear of the charge port lock (A).



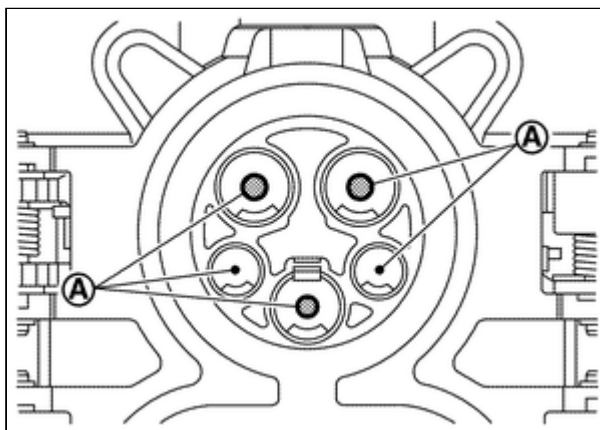
RPR-001824611-02-000422741

- If the port is damaged, replace the quick charge port. For replacement of the quick charge port, refer to [CHARGE PORT : Removal & Installation](#).

Normal Charge Port

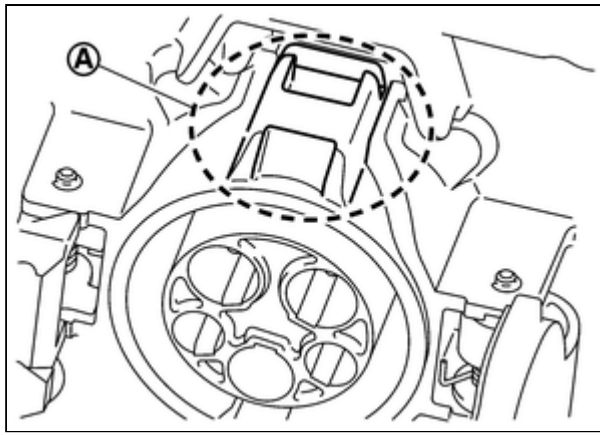
1 Perform the following visual inspections.

- Dust and foreign matter in the quick charge port and normal charge port
- Damage in the quick charge port and normal charge port
- Malfunction in opening/closing the charge port caps and looseness when closed and locked.
- Check that the normal charge port terminals (A) are not bent.



RPR-001824611-13-000422742

- Check that there is no snow or ice on the charge port top side (A).



RPR-001824611-05-000422741



NOTE:

If snow or ice reaches the charge connector lock, charging does not start.

Handling of charge port

Cleaning of charge port

If the charge port becomes dirty, clean the port with an air blow gun.

Handling of damaged cap

Perform the following procedure if the cap becomes damaged:

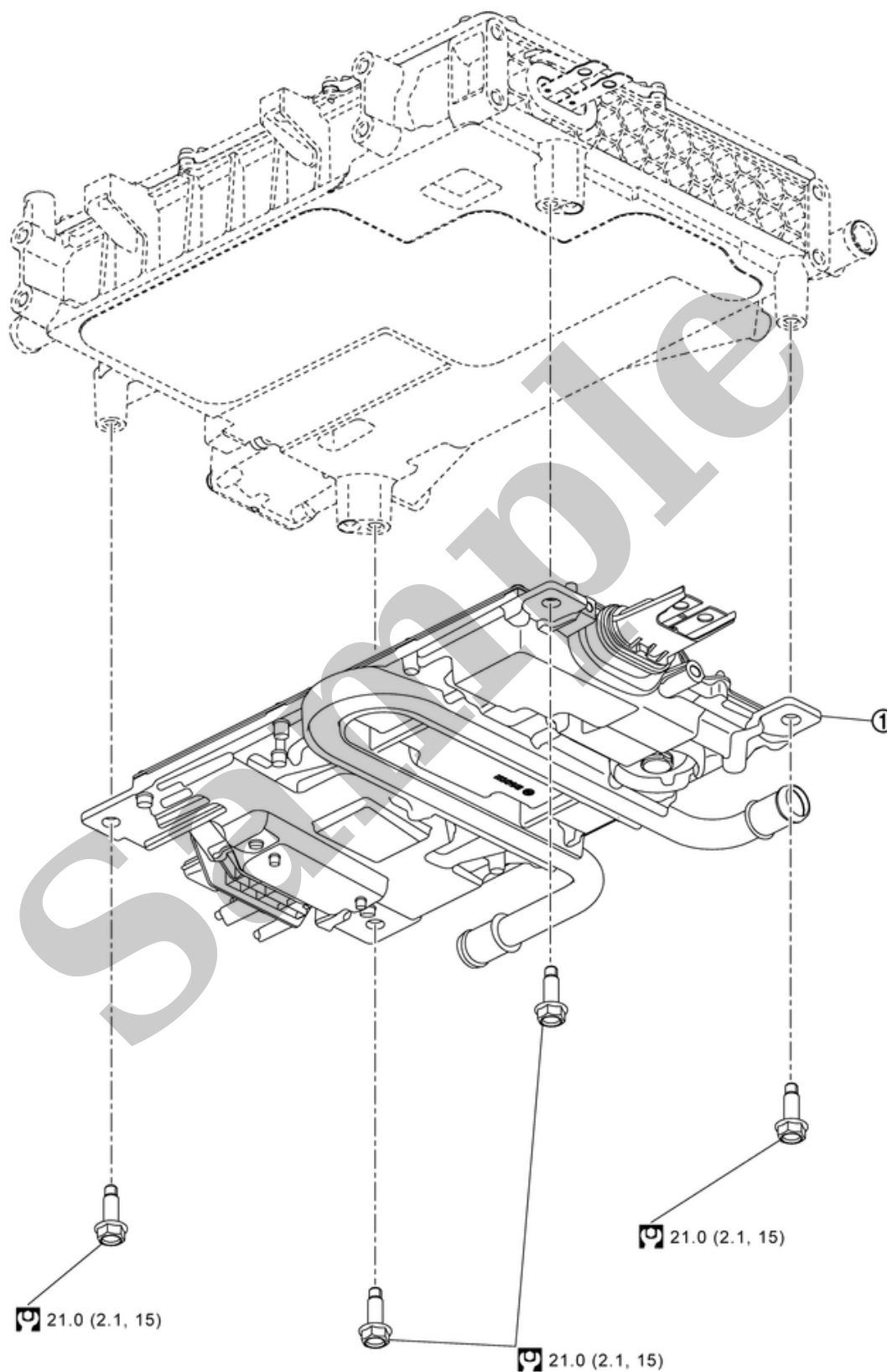
- Replace charge port cap if the charge port cap becomes damaged
- Replace charge port if the terminal of quick charge port or normal charge port becomes damaged.

Cleaning of the inside of rubber cap

If air does not exit through the rubber cap hole, remove the rubber cap from the port and clean the inside so that air exits through the rubber cap hole.

EXPLODED VIEW

SEC. 290



RDE-001980218-01-000372709

①	DC/DC converter				
Ⓜ	: N·m (kg-m, ft-lb)				

DANGER:

Since hybrid vehicles and electric vehicles contain a high voltage battery, there is the risk of electric shock, electric leakage, or similar accidents if the high voltage component and vehicle are handled incorrectly. Be sure to follow the correct work procedures when performing inspection and maintenance.

WARNING:

- Be sure to remove the service plug in order to disconnect the high voltage circuits before performing inspection or maintenance of high voltage system harnesses and parts.
- The removed service plug must always be carried in a pocket of the responsible worker or placed in the tool box during the procedure to prevent the plug from being connected by mistake.
- Be sure to wear insulating protective equipment consisting of glove, shoes, face shield and glasses before beginning work on the high voltage system.
- Never allow workers other than the responsible person to touch the vehicle containing high voltage parts. To keep others from touching the high voltage parts, these parts must be covered with an insulating sheet except when using them.
- Refer to [HIGH VOLTAGE PRECAUTIONS : Precautions](#).

CAUTION:

Never bring the vehicle into the READY status with the service plug removed unless otherwise instructed in the Service Manual. A malfunction may occur if this is not observed.

REMOVAL

WARNING:

Disconnect high voltage. Refer to [HOW TO DISCONNECT HIGH VOLTAGE : Precautions](#).

1. Check voltage in high voltage circuit. (Check that condenser are discharged.)

DANGER:

Touching high voltage components without using the appropriate protective equipment will cause electrocution.



2. Remove the high voltage power delivery assembly. Refer to [HIGH VOLTAGE POWER DELIVERY ASSEMBLY : Removal & Installation](#).

DANGER:

Touching high voltage components without using the appropriate protective equipment will cause electrocution.



3. Remove the high voltage junction box. Refer to [HIGH VOLTAGE JUNCTION BOX : Disassembly & Assembly](#).

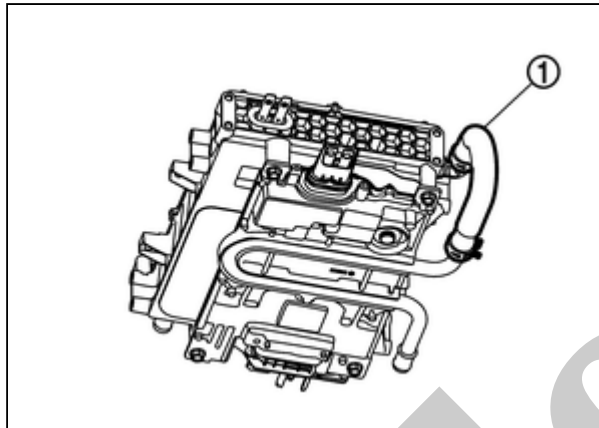
DANGER:



Touching high voltage components without using the appropriate protective equipment will cause electrocution.



4. Remove the DC/DC converter inlet hose ①.



RPR-001980217-01-000346784

DANGER:



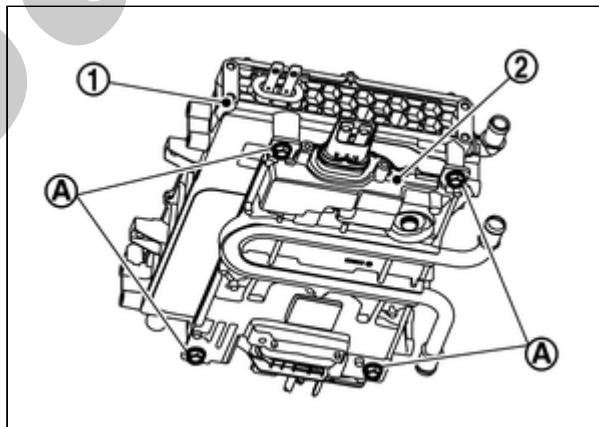
Touching high voltage components without using the appropriate protective equipment will cause electrocution.



CAUTION:

Touching high voltage components without using the appropriate protective equipment will cause electrocution.

5. Remove the DC/DC converter mounting bolts (A), and remove the DC/DC converter ② from the on-board charger ①.



RPR-001980217-02-000346785

DANGER:



Touching high voltage components without using the appropriate protective equipment will cause electrocution.



Note the followings, and install in the reverse order of removal.

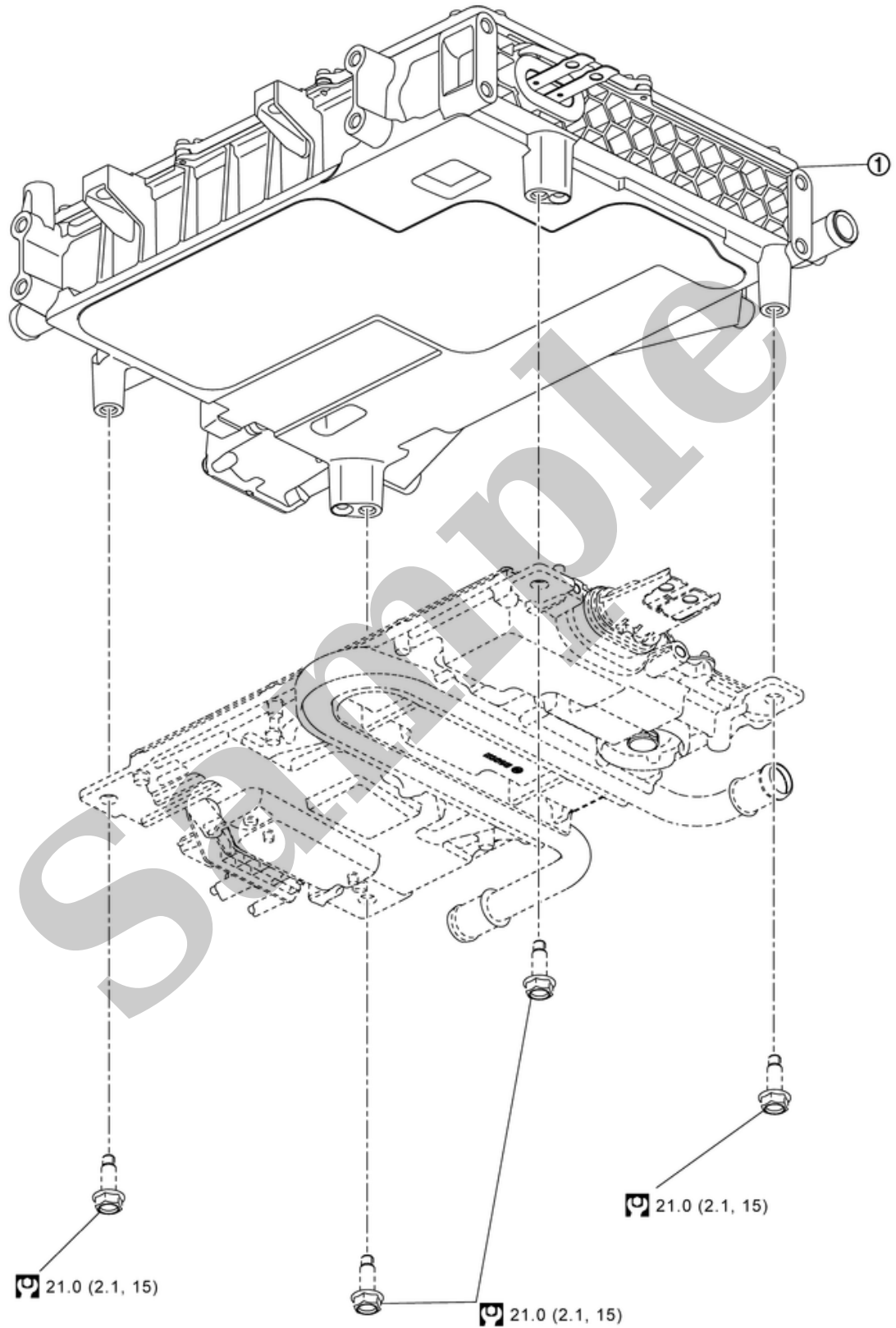
CAUTION:

If the gasket of the DC / DC converter has visible cracks, scratches, or twists, replace the DC / DC converter body.

Sample

EXPLODED VIEW

SEC. 291



RDE-001980216-01-000369926

①	On-board charger				
Ⓜ	: N·m (kg-m, ft-lb)				

DANGER:

Since hybrid vehicles and electric vehicles contain a high voltage battery, there is the risk of electric shock, electric leakage, or similar accidents if the high voltage component and vehicle are handled incorrectly. Be sure to follow the correct work procedures when performing inspection and maintenance.

WARNING:

- Be sure to remove the service plug in order to disconnect the high voltage circuits before performing inspection or maintenance of high voltage system harnesses and parts.
- The removed service plug must always be carried in a pocket of the responsible worker or placed in the tool box during the procedure to prevent the plug from being connected by mistake.
- Be sure to wear insulating protective equipment consisting of glove, shoes, face shield and glasses before beginning work on the high voltage system.
- Never allow workers other than the responsible person to touch the vehicle containing high voltage parts. To keep others from touching the high voltage parts, these parts must be covered with an insulating sheet except when using them.
- Refer to [HIGH VOLTAGE PRECAUTIONS : Precautions](#).

CAUTION:

Never bring the vehicle into the READY status with the service plug removed unless otherwise instructed in the Service Manual. A malfunction may occur if this is not observed.

REMOVAL

WARNING:

Disconnect high voltage. Refer to [HOW TO DISCONNECT HIGH VOLTAGE : Precautions](#).

1. Check voltage in high voltage circuit. (Check that condenser are discharged.)

DANGER:

Touching high voltage components without using the appropriate protective equipment will cause electrocution.



2. Remove the high voltage power delivery assembly. Refer to [HIGH VOLTAGE POWER DELIVERY ASSEMBLY : Removal & Installation](#).

DANGER:

Touching high voltage components without using the appropriate protective equipment will cause electrocution.



3. Remove the high voltage junction box. Refer to [HIGH VOLTAGE JUNCTION BOX : Disassembly & Assembly](#).

DANGER: