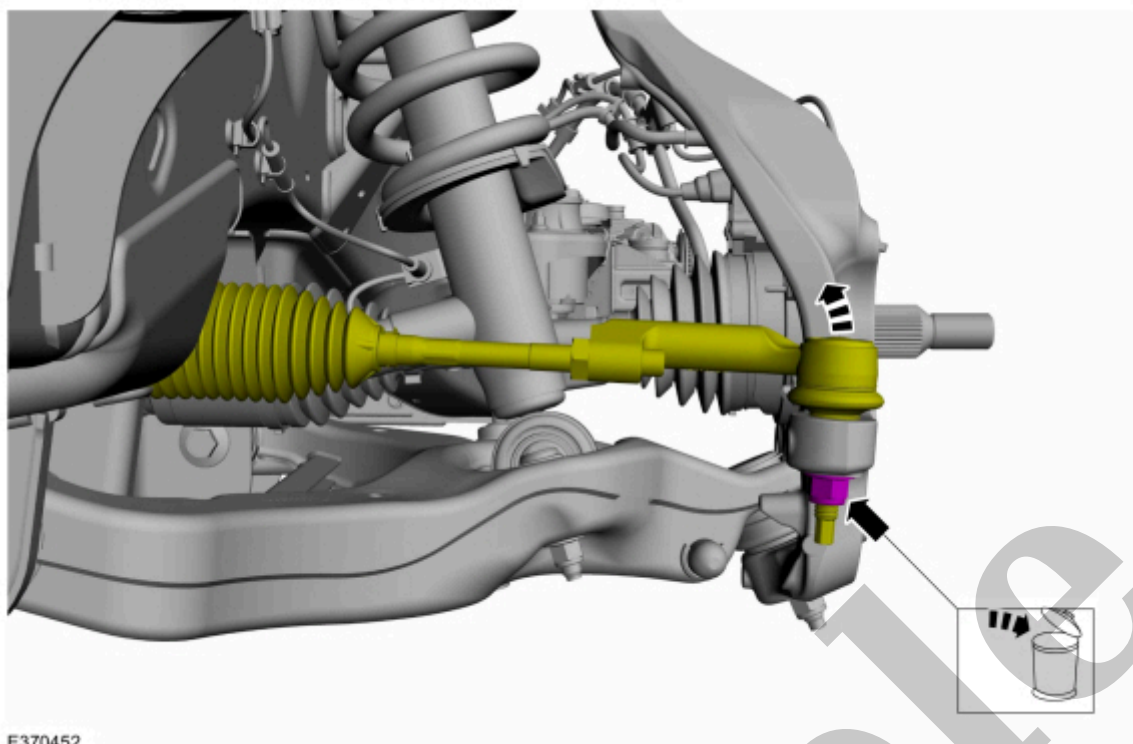


Your Ultimate Source for OEM Repair Manuals

FactoryManuals.net is a great resource for anyone who wants to save money on repairs by doing their own work. The manuals provide detailed instructions and diagrams that make it easy to understand how to fix a vehicle.

2014 FORD Ranger Double Cab OEM Service and Repair Workshop Manual

[Go to manual page](#)

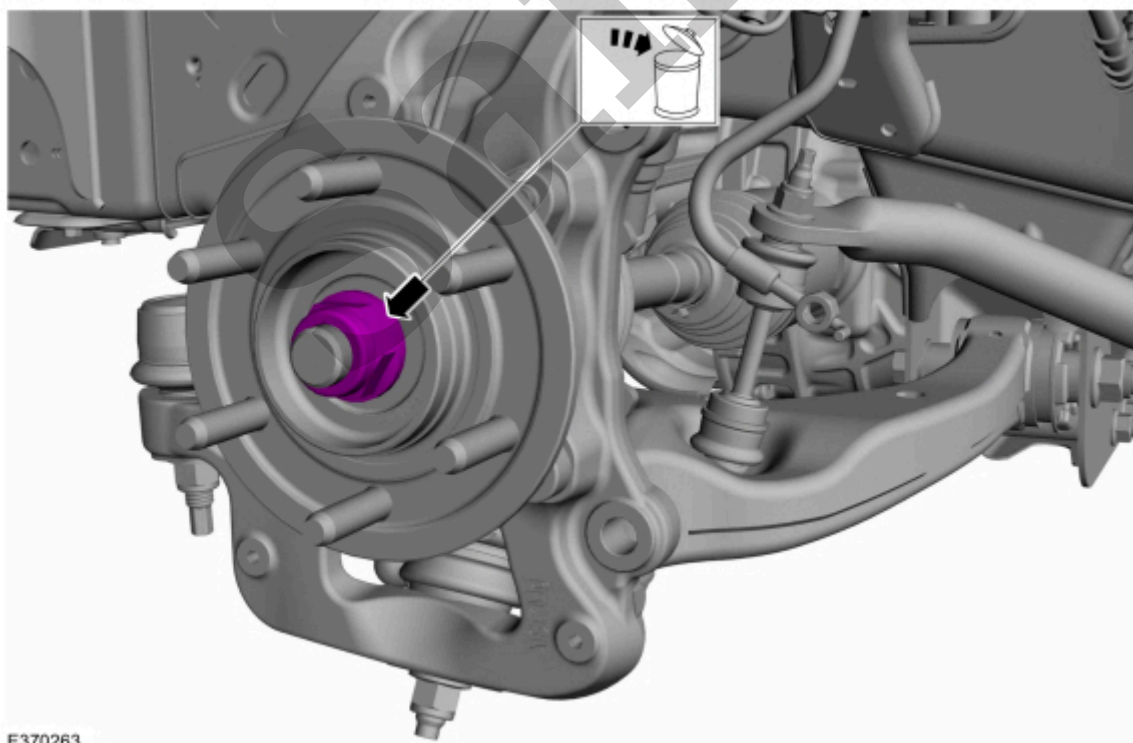


E370452

[Click here to learn about symbols, color coding, and icons used in this manual.](#)

7. Remove and discard the wheel hub nut.

Torque : 184 lb.ft (250 Nm)



E370263

[Click here to learn about symbols, color coding, and icons used in this manual.](#)

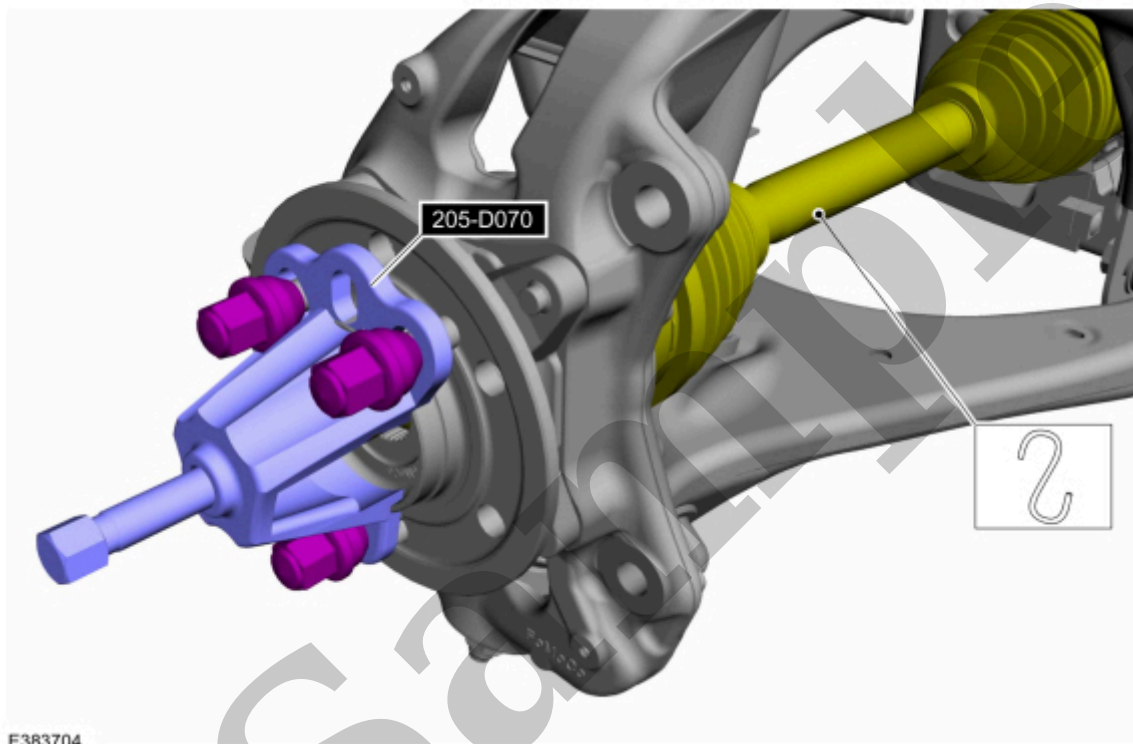
[Click here to learn about symbols, color coding, and icons used in this manual.](#)

10. **NOTICE**

Do not bend the inner joint more than 18 degrees and the outer joint more than 45 degrees. Damage to the shaft will occur.

Using the special tool, press the halfshaft from the wheel bearing and hub. Support the halfshaft in a level position.

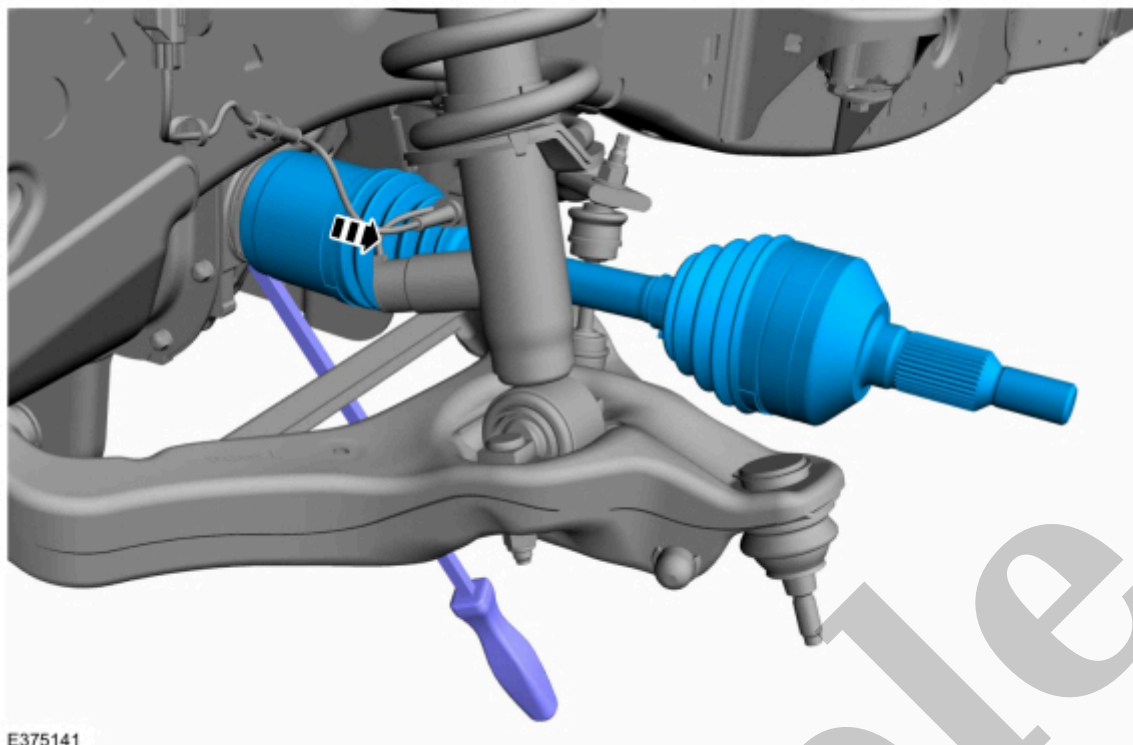
Use Special Service Tool : 205-D070 (D93P-1175-B) Remover, Front Wheel Hub



E383704

[Click here to learn about symbols, color coding, and icons used in this manual.](#)

11.
 1. Position the wheel knuckle to gain access.
 2. Remove the CV (constant velocity) shaft joint outboard end.

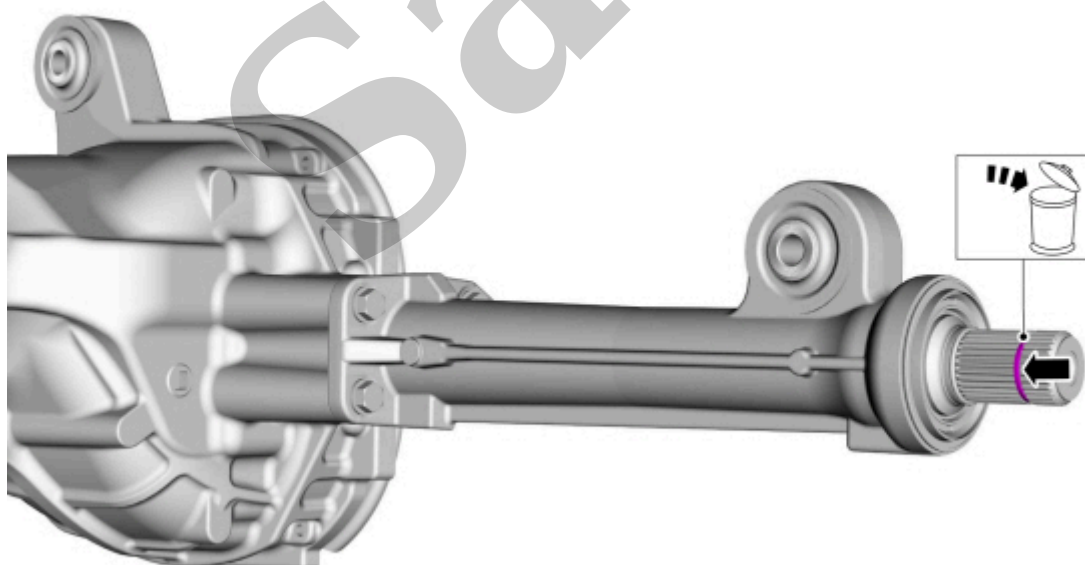


E375141

[Click here to learn about symbols, color coding, and icons used in this manual.](#)

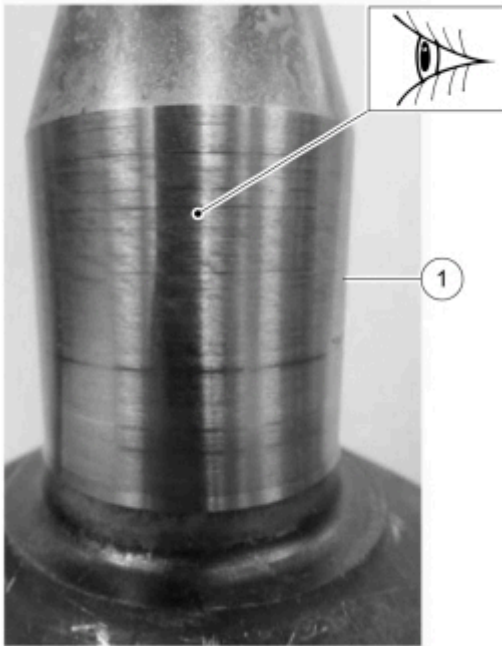
13. Right-hand side.

- Remove and discard the circlip.

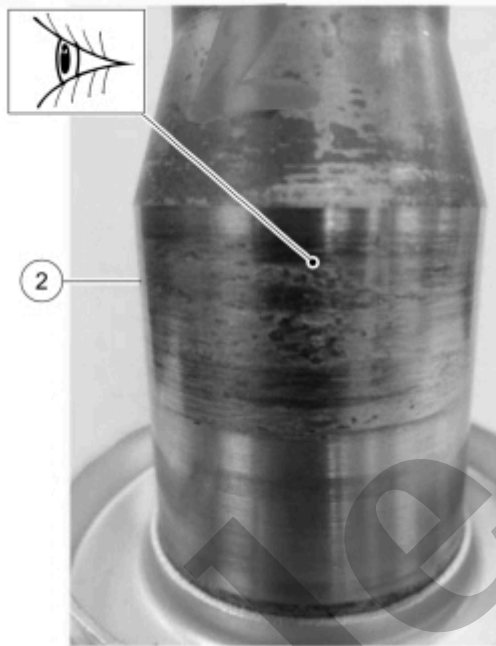


E193169

[Click here to learn about symbols, color coding, and icons used in this manual.](#)



E359342

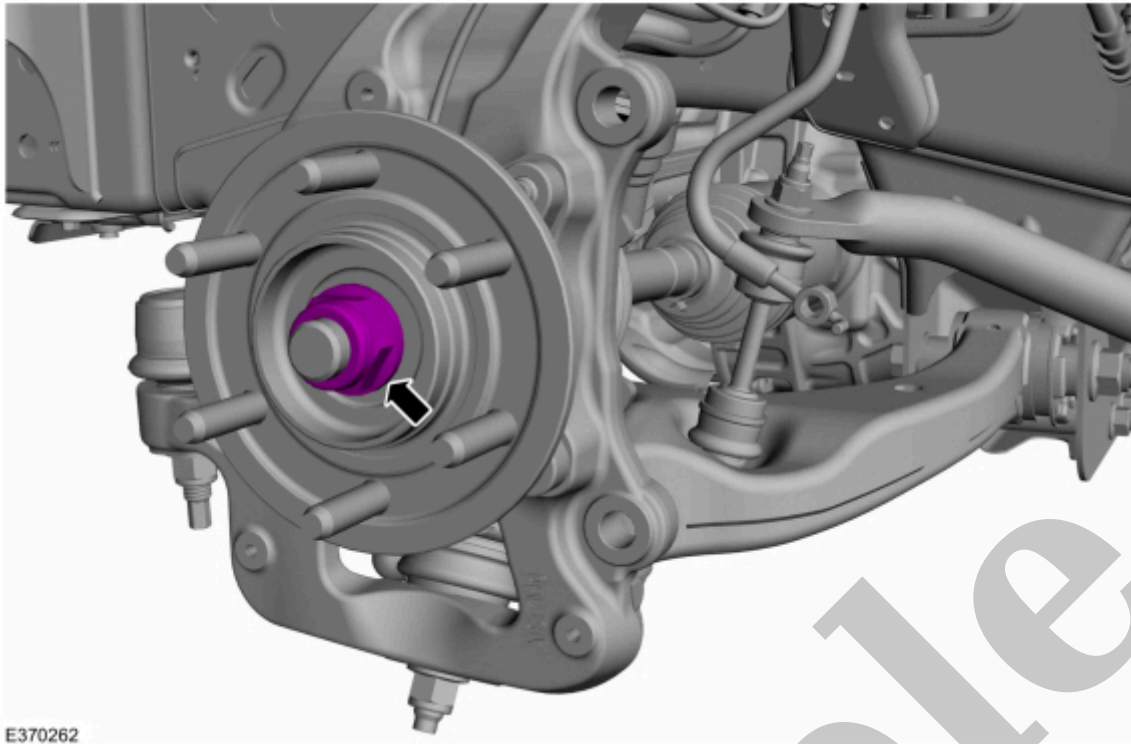


[Click here to learn about symbols, color coding, and icons used in this manual.](#)

Installation

1. If the LH (left-hand) halfshaft is removed, replace the LH (left-hand) axle shaft seal.
Refer to: [Axle Shaft Seal](#)(205-03 Front Drive Axle/Differential, Removal and Installation).
2. To install, reverse the removal procedure.
3. Pull the halfshaft into the front wheel bearing and wheel hub.

Use Special Service Tool : 204-161 (T97P-1175-A) Installer, Halfshaft



E370262

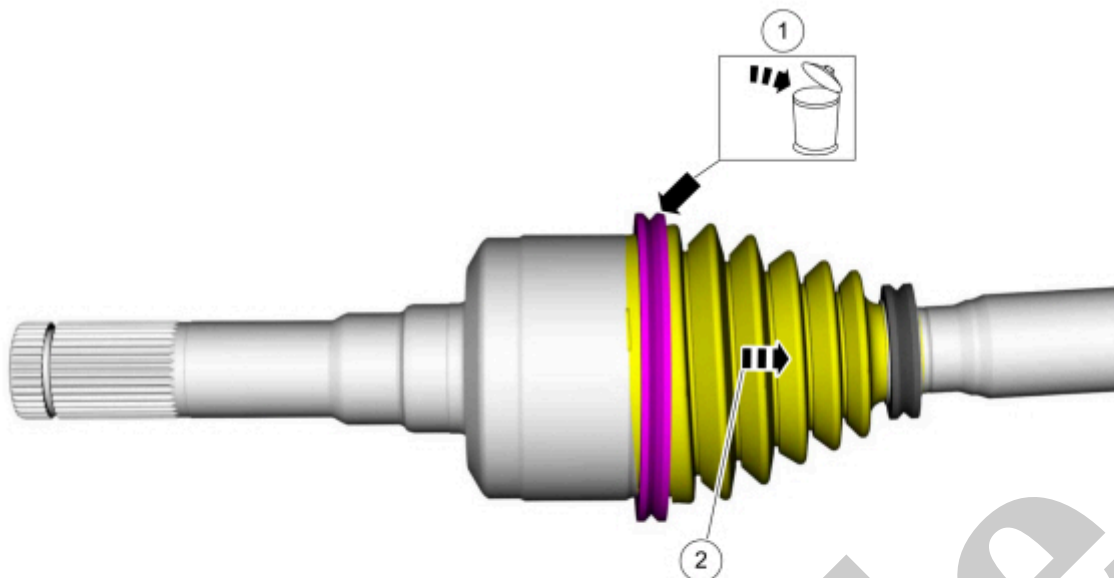
[Click here to learn about symbols, color coding, and icons used in this manual.](#)

5. Check the front differential fluid level.

Refer to: [Differential Fluid Level Check](#)(205-03 Front Drive Axle/Differential, General Procedures).

6. If equipped with dynamic suspension, calibrate the suspension height sensor. Connect the scan tool and carry out the Ride Height Calibration routine. Follow the scan tool directions.

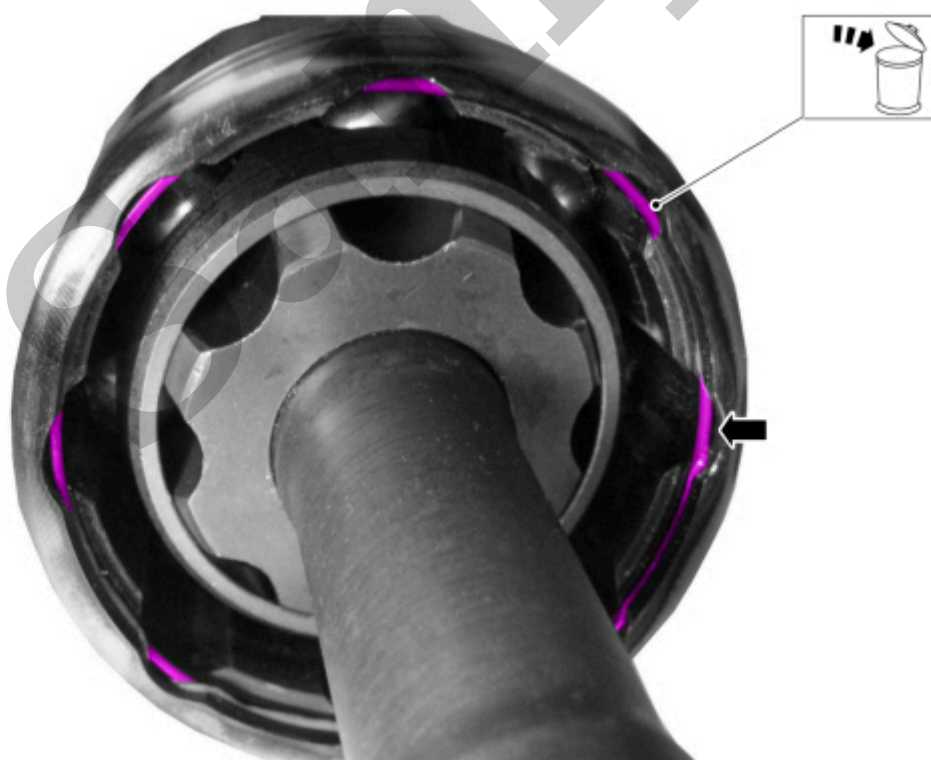
Copyright © Ford Motor Company



E193674

[Click here to learn about symbols, color coding, and icons used in this manual.](#)

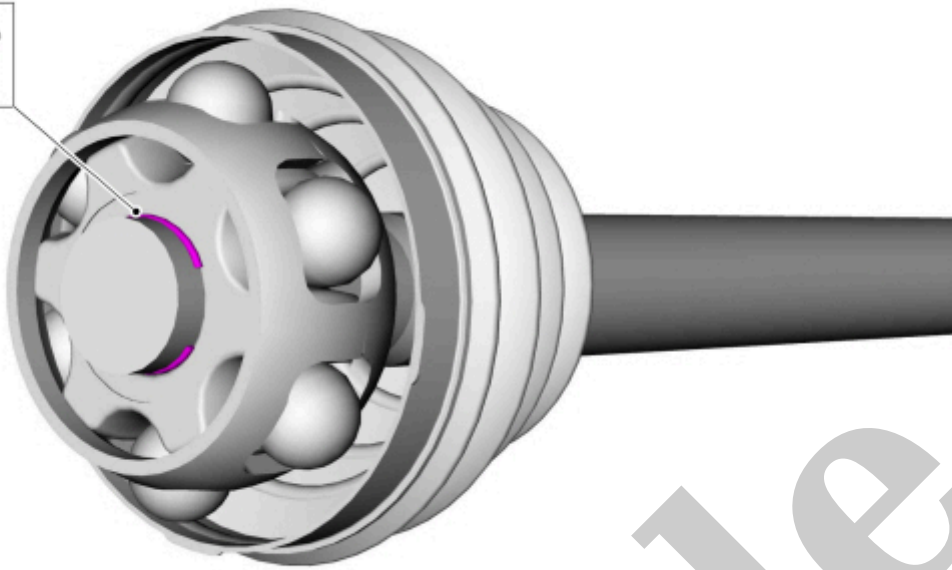
3. Remove and discard the inner CV (constant velocity) housing retaining ring.



E193675

[Click here to learn about symbols, color coding, and icons used in this manual.](#)

4. Remove the inner CV (constant velocity) joint housing.



E185697

[Click here to learn about symbols, color coding, and icons used in this manual.](#)

6. **NOTE**

The CV (constant velocity) joint cage balls are free to fall out.

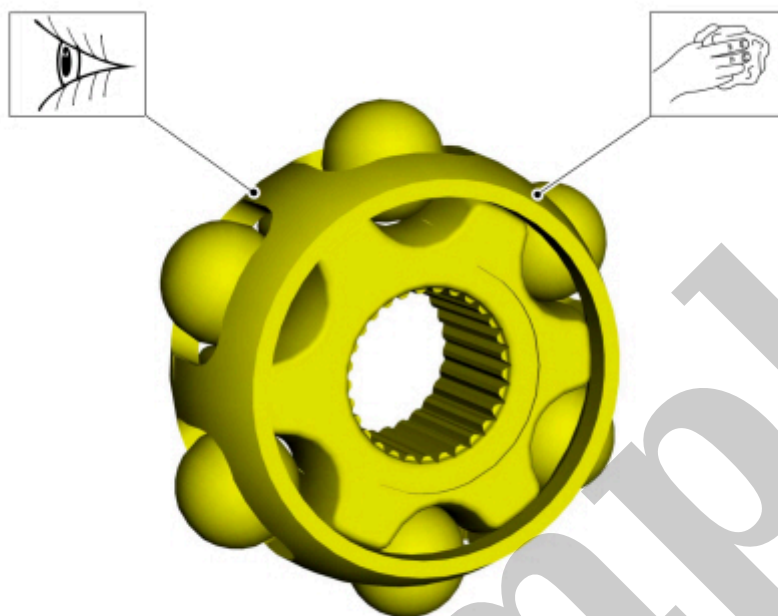
Using general equipment, remove the CV (constant velocity) joint cage.

Use the General Equipment: Three Leg Puller

1. **NOTE**

CV (constant velocity) cage is shown assembled.

Clean and inspect the CV (constant velocity) joint cage.

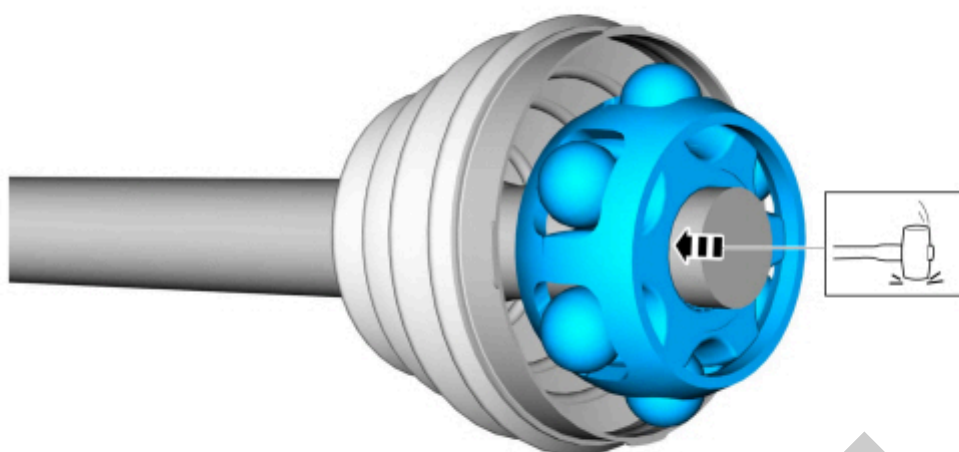


E185699

[Click here to learn about symbols, color coding, and icons used in this manual.](#)

2. Using boot clamp pliers, install the new CV (constant velocity) joint boot and the new small CV (constant velocity) joint boot clamp.

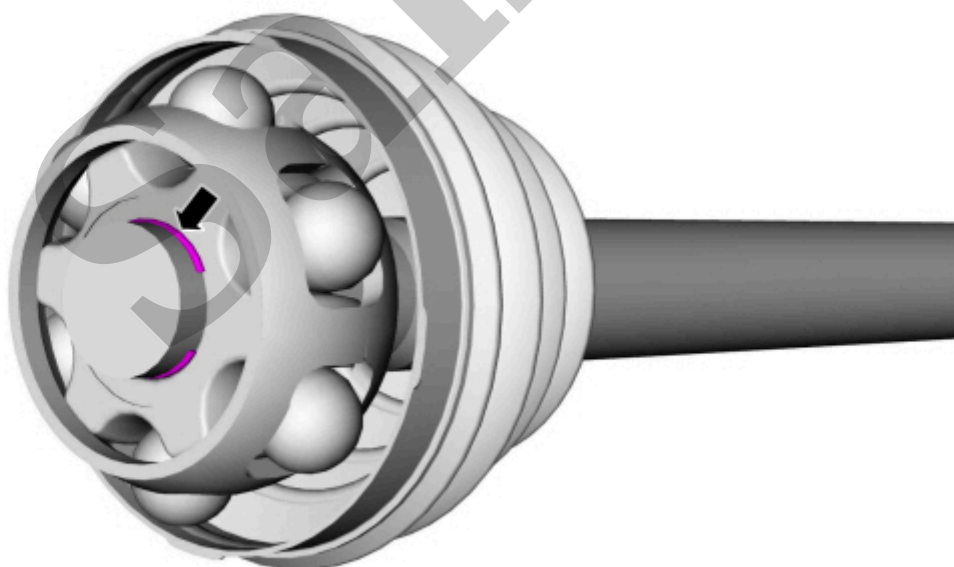
Use the General Equipment: Boot Clamp Pliers



E185700

[Click here to learn about symbols, color coding, and icons used in this manual.](#)

4. Install the new CV (constant velocity) joint cage circlip.



E185701

[Click here to learn about symbols, color coding, and icons used in this manual.](#)

5. Install the grease sachet evenly in the CV (constant velocity) joint boot and housing.