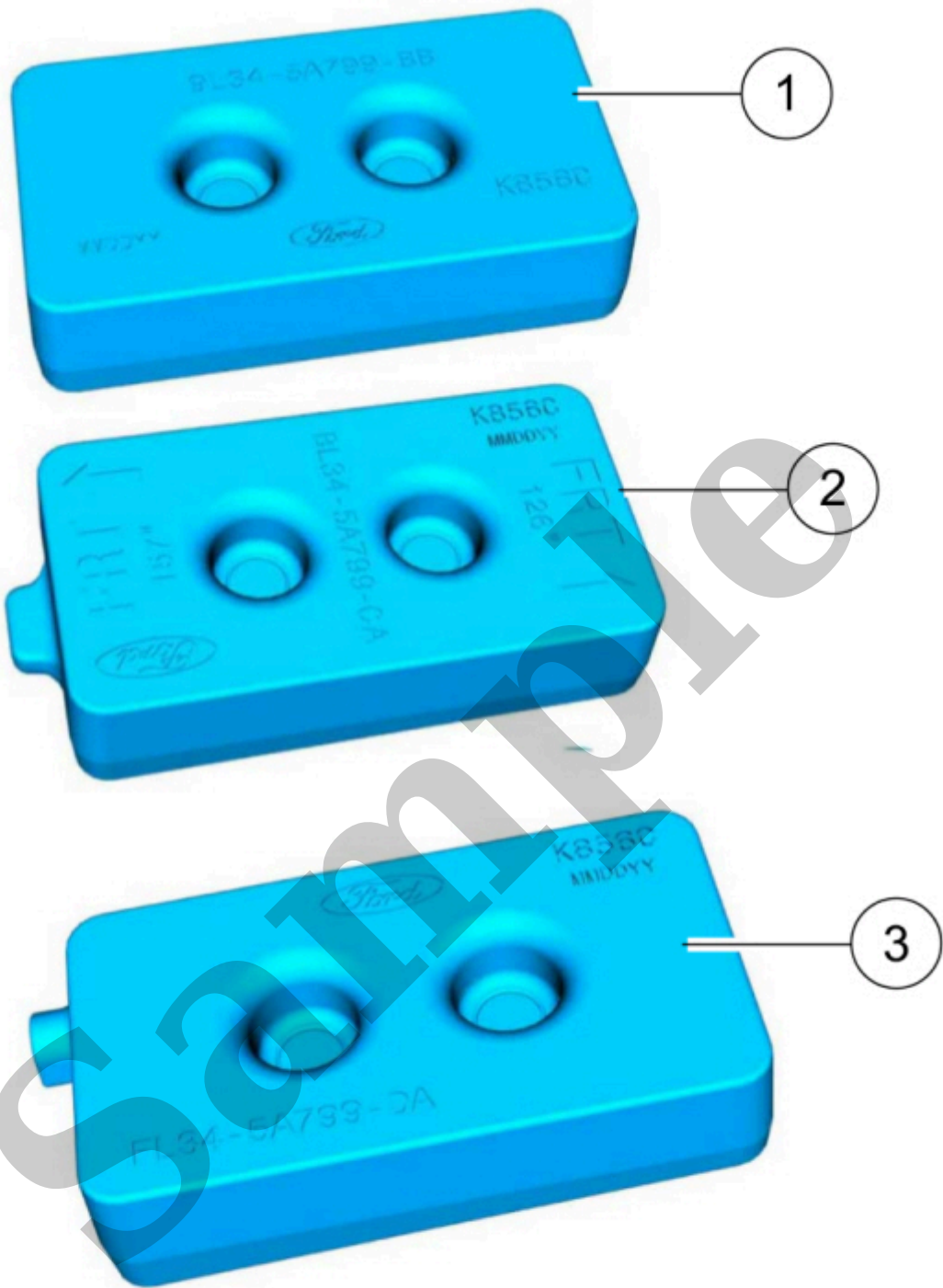


Your Ultimate Source for OEM Repair Manuals

FactoryManuals.net is a great resource for anyone who wants to save money on repairs by doing their own work. The manuals provide detailed instructions and diagrams that make it easy to understand how to fix a vehicle.

2014 FORD Focus Sedan OEM Service and Repair Workshop Manual

[Go to manual page](#)



E337582

[Click here to learn about symbols, color coding, and icons used in this manual.](#)



E360791

[Click here to learn about symbols, color coding, and icons used in this manual.](#)

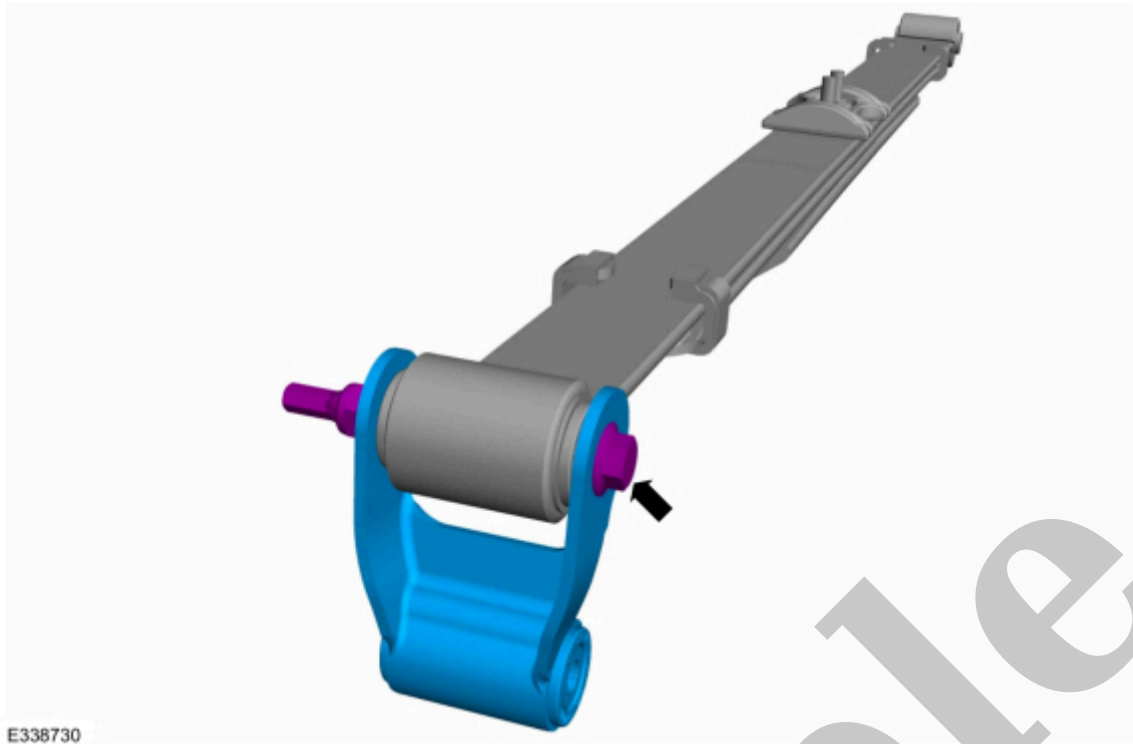
4. NOTICE

Make sure that the mating faces are clean and free of corrosion and foreign material.

NOTE

Make sure the spring spacer is correctly seated between the axle and spring.

Install the spring spacer.

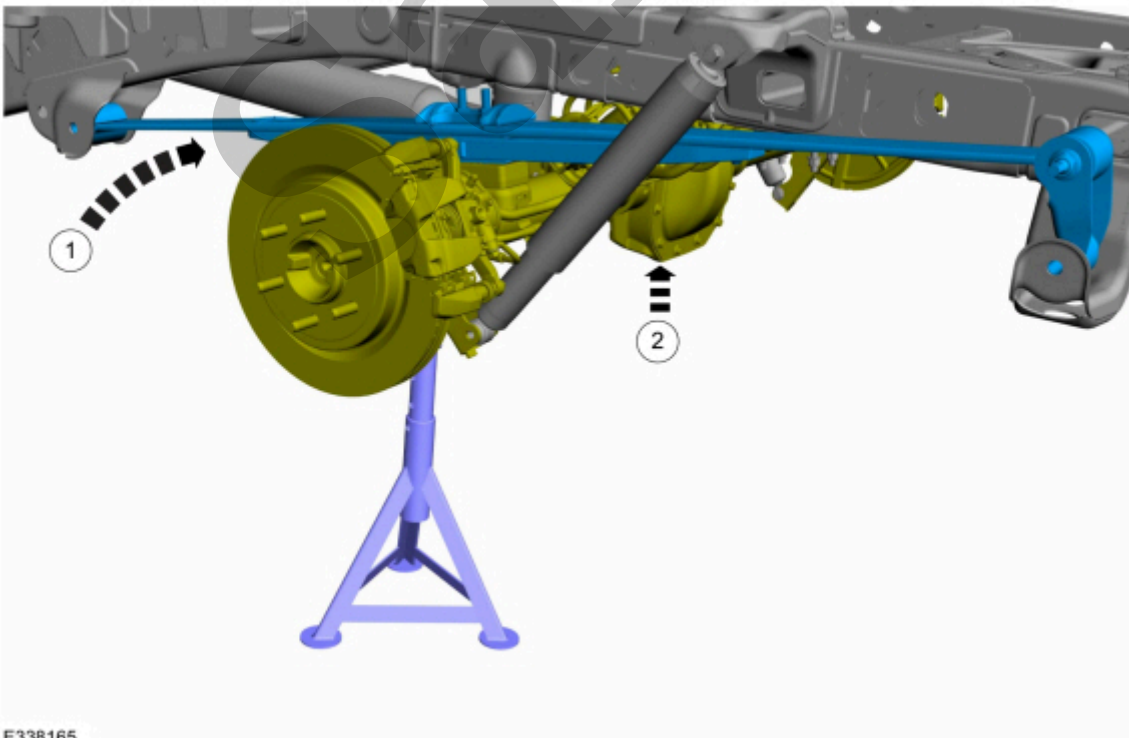


E338730

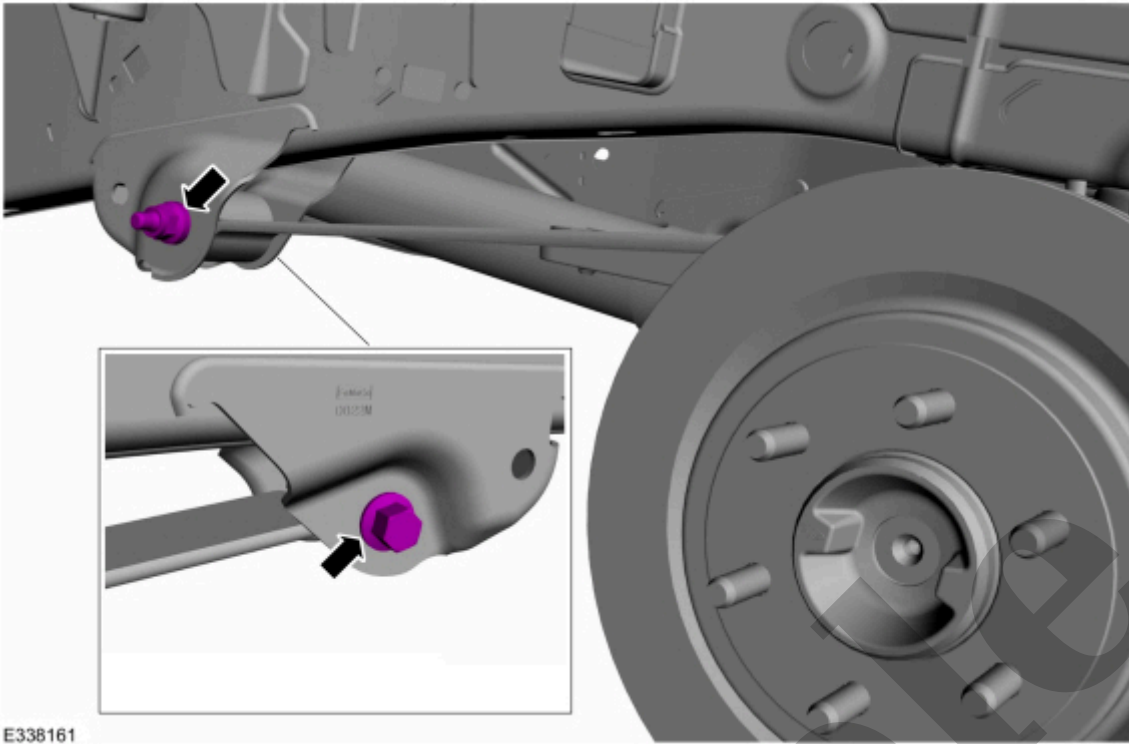
[Click here to learn about symbols, color coding, and icons used in this manual.](#)

6. 1. Position the spring and shackle assembly.
2. Raise the axle.

Use the General Equipment: Vehicle/Axle Stands



E338165



E338161

[Click here to learn about symbols, color coding, and icons used in this manual.](#)

9. NOTICE

Make sure that the mating faces are clean and free of corrosion and foreign material.

1. NOTE

Verify U-bolts are perpendicular and on center to leaf spring. Maintain equal side-to-side clearance to leaf spring stack when securing.

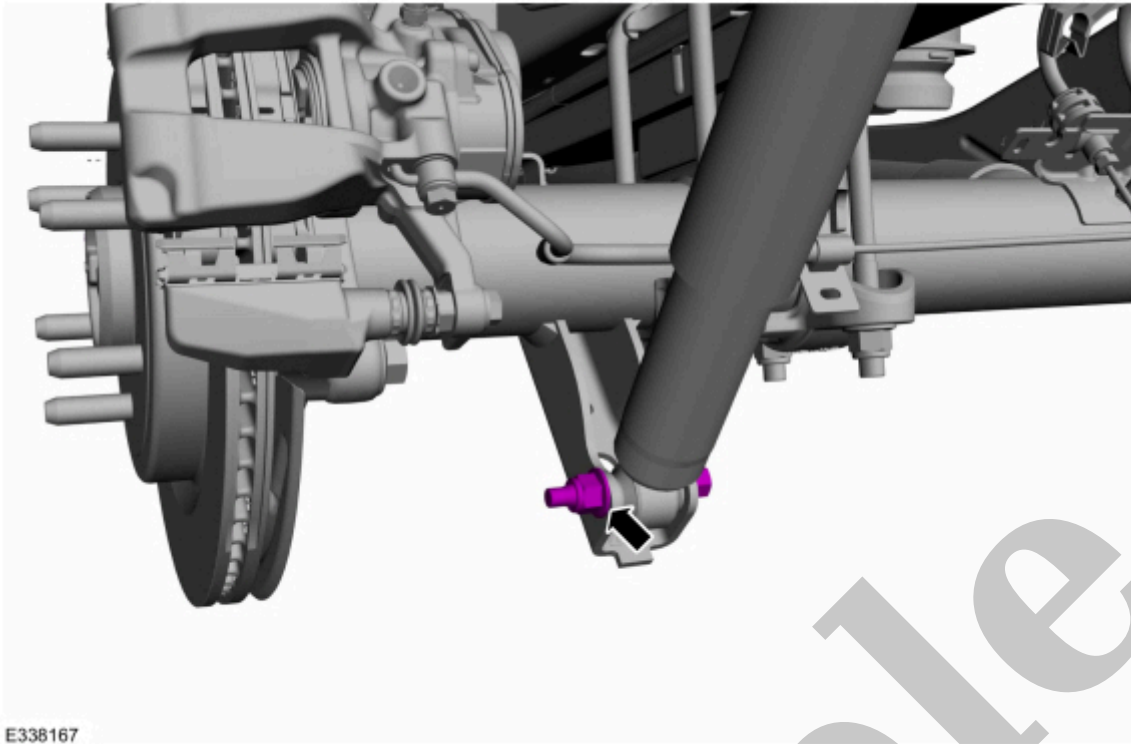
Install the new U-bolts.

2. Install the U-bolt plate.

3. NOTE

Only tighten the nut and bolt to snug at this stage.

Install the new U-bolt nuts.



E338167

[Click here to learn about symbols, color coding, and icons used in this manual.](#)

11. Install the wheel and tire.

Refer to: [Wheel and Tire](#)(204-04A Wheels and Tires, Removal and Installation).

12. Lower the vehicle until the weight of the vehicle is resting on the wheels and tires (curb height).

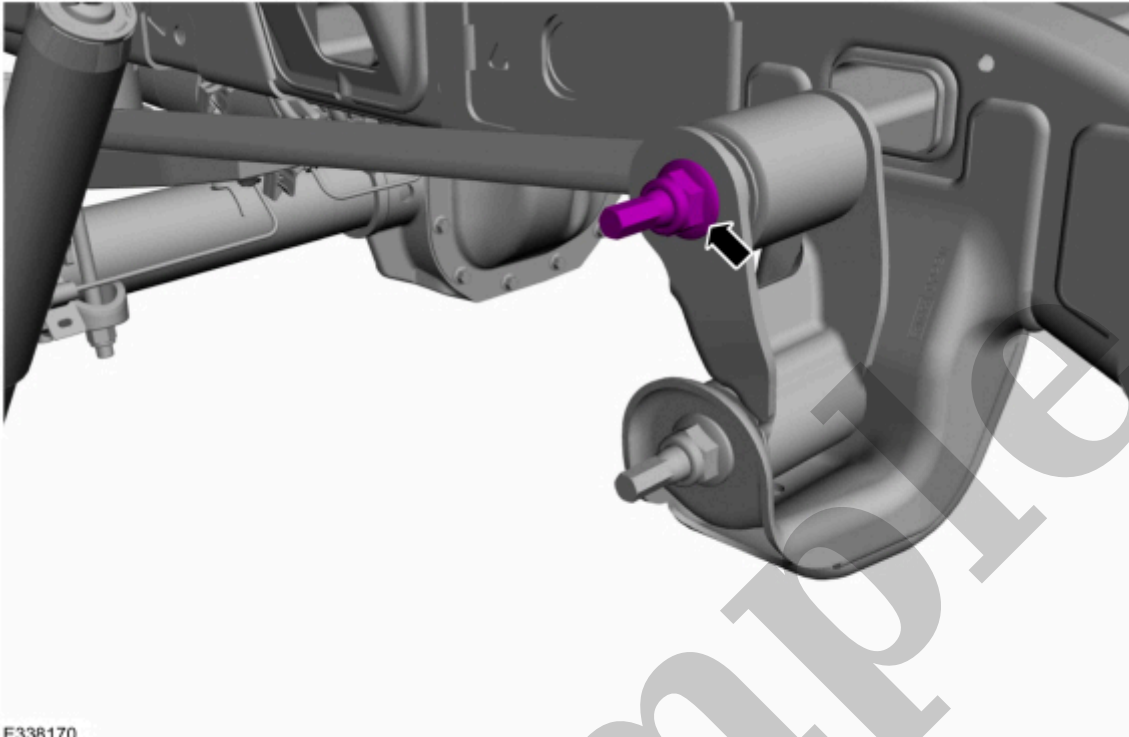
13. Tighten the new spring shackle-to-frame nut and bolt.

Torque : 173 lb.ft (235 Nm)

15. If necessary.

Tighten the new shackle-to-spring bolt and nut.

Torque : 173 lb.ft (235 Nm)



[Click here to learn about symbols, color coding, and icons used in this manual.](#)

16. Tighten the U-bolt nuts in a cross pattern in 4 stages.

Torque :

Stage 1: 30 lb.ft (40 Nm)

Stage 2: 59 lb.ft (80 Nm)

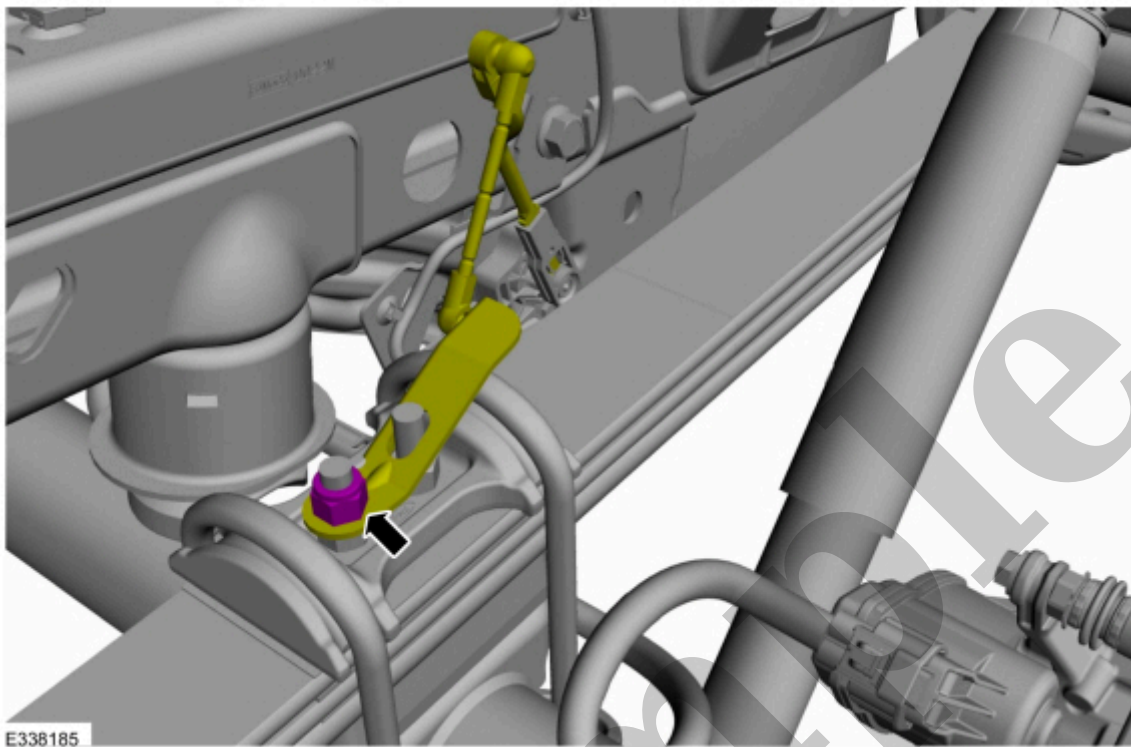
Stage 3: 89 lb.ft (120 Nm)

Stage 4: 111 lb.ft (150 Nm)

18. If equipped.

Attach the height sensor arm to the leaf spring U-bolt and tighten the nut.

Torque : 30 lb.ft (40 Nm)



[Click here to learn about symbols, color coding, and icons used in this manual.](#)

19. If equipped.

Connect the height sensor electrical connector and the harness retainer.

Refer to: [Fuel Tank](#)(310-01E Fuel Tank and Lines - 5.0L 32V Ti-VCT, Removal and Installation).

Refer to: [Fuel Tank](#)(310-01D Fuel Tank and Lines - 3.5L V6 PowerBoost (CN), Removal and Installation).

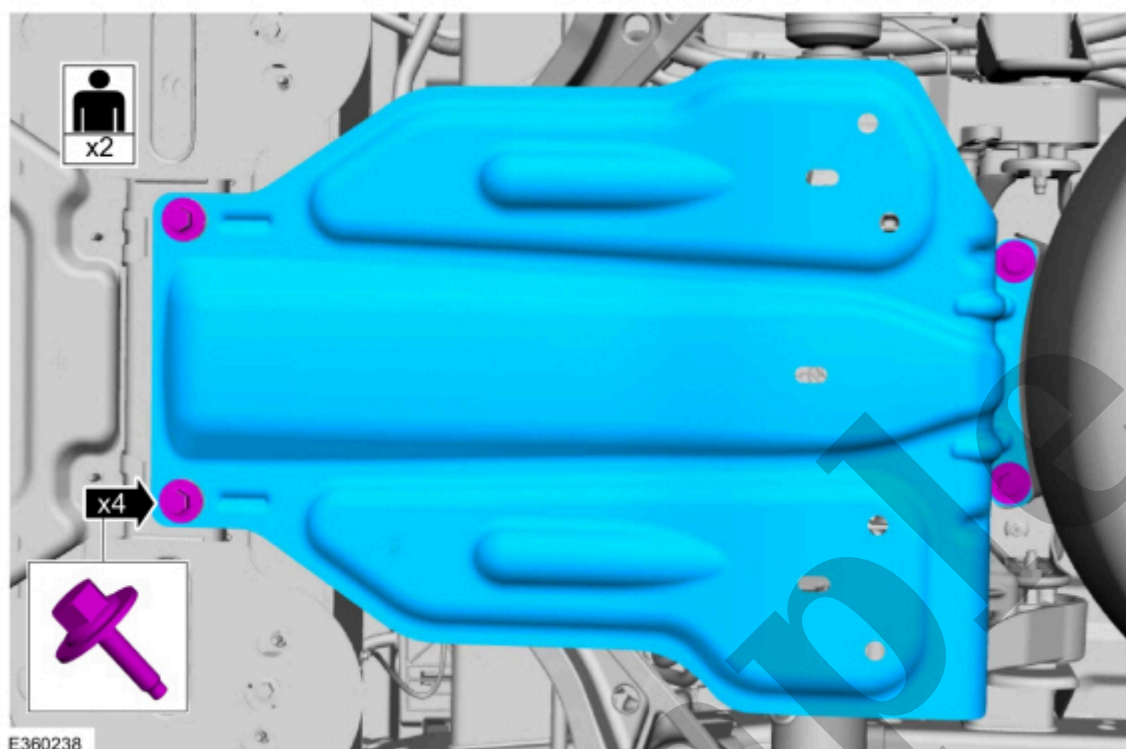
22. If required, calibrate the suspension height sensor. Connect the scan tool and carry out the Ride Height Calibration routine. Follow the scan tool directions.

Copyright © Ford Motor Company

Sample

This step requires the aid of another technician.

Remove the bolts and the rear underbody shield.



[Click here to learn about symbols, color coding, and icons used in this manual.](#)

3. NOTICE

Make sure that the insulator pads are correctly positioned to prevent direct contact with other components.

Support the rear suspension using an transmission jack.

Use the General Equipment: Transmission Jack