

# Your Ultimate Source for OEM Repair Manuals

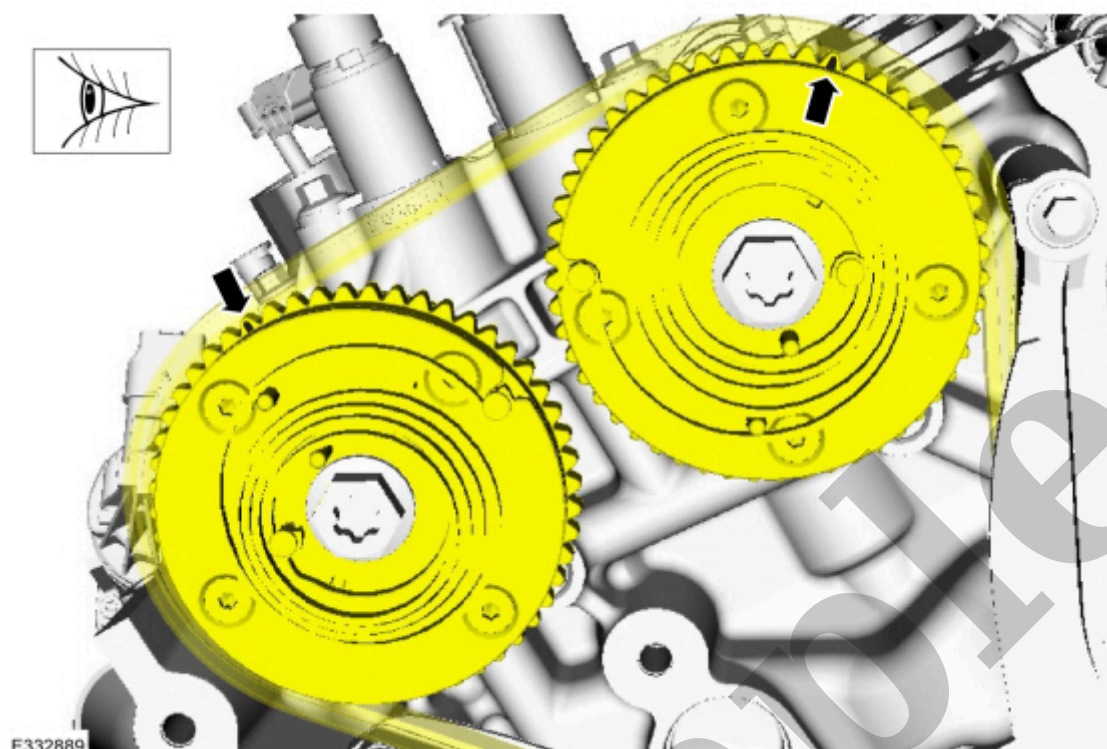
FactoryManuals.net is a great resource for anyone who wants to save money on repairs by doing their own work. The manuals provide detailed instructions and diagrams that make it easy to understand how to fix a vehicle.

## 2013 Ford E-250 Super Duty Service and Repair Manual

[Go to manual page](#)

[Click here to learn about symbols, color coding, and icons used in this manual.](#)

6. Verify the timing marks on the VCT (variable camshaft timing) units are at the positions shown.

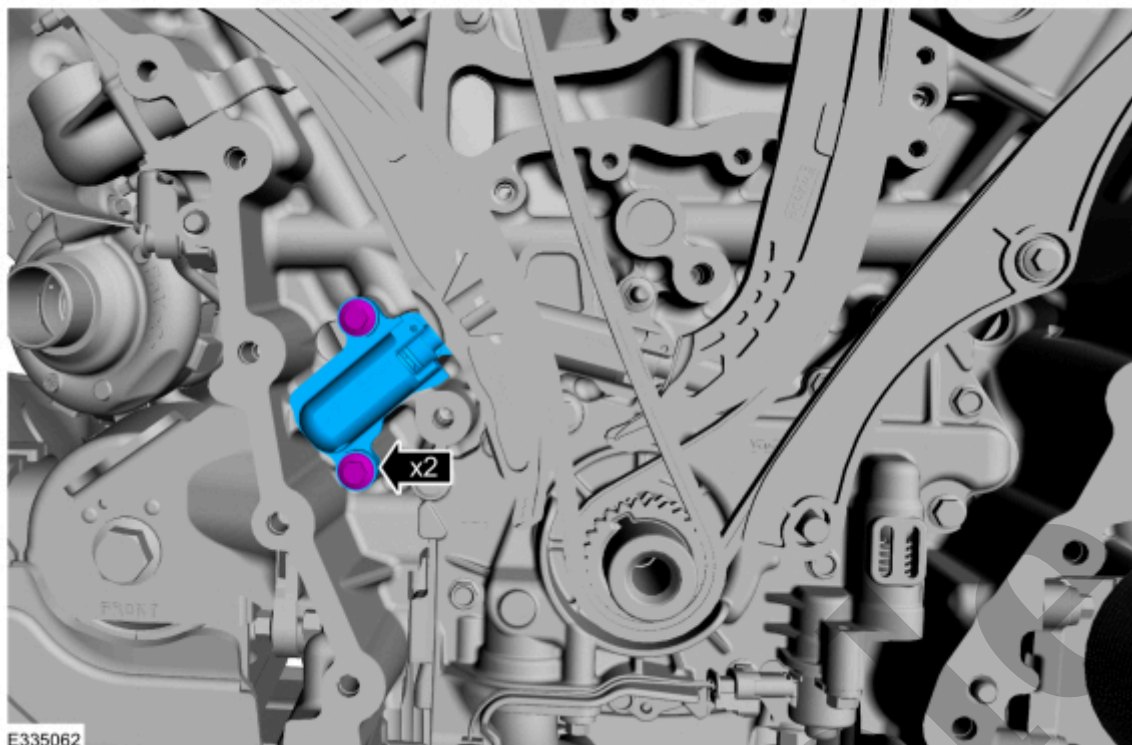


[Click here to learn about symbols, color coding, and icons used in this manual.](#)

#### 7. NOTE

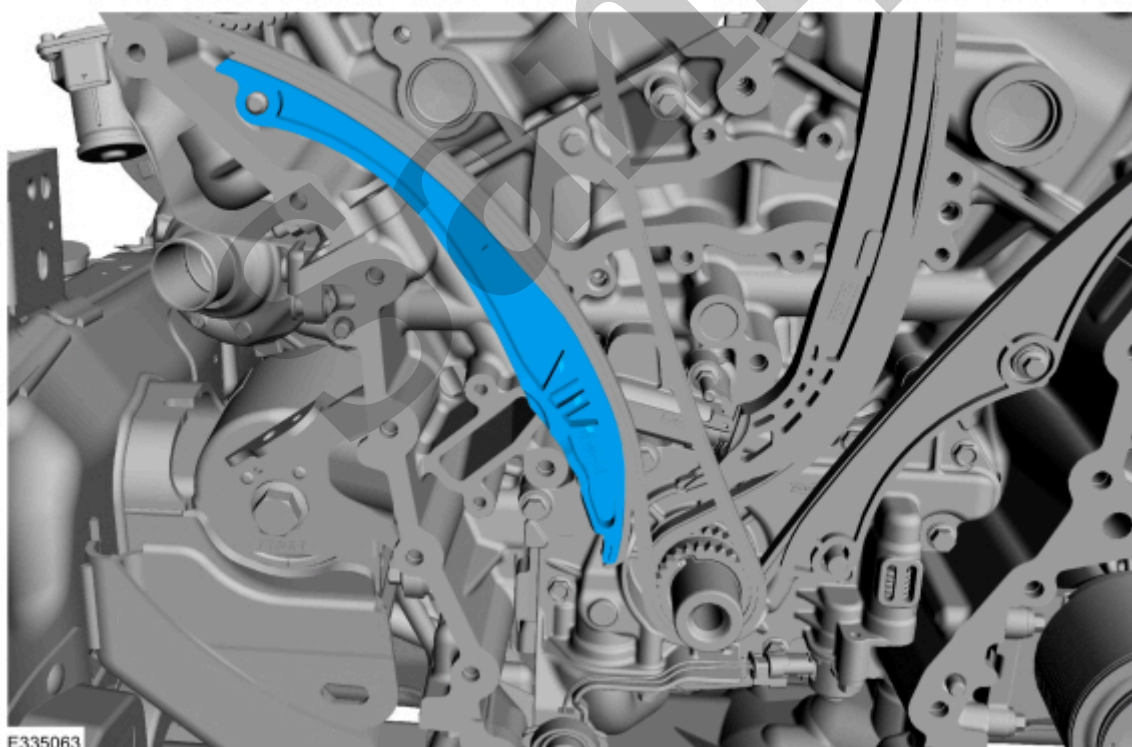
The Camshaft Holding Tool will hold the camshafts in the TDC (top dead center) position.

**Install Special Service Tool** : 303-1655 Tool, Camshaft Holding



[Click here to learn about symbols, color coding, and icons used in this manual.](#)

10. Remove the RH (right-hand) timing chain tensioner arm.

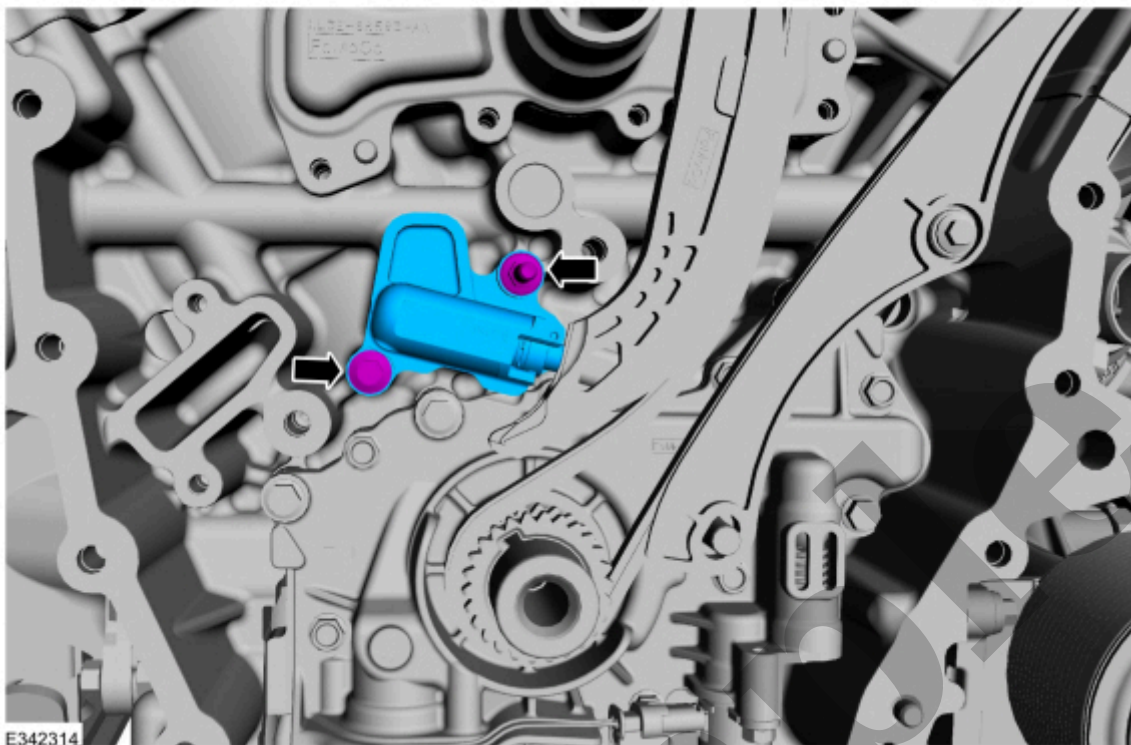


[Click here to learn about symbols, color coding, and icons used in this manual.](#)

11. Remove the RH (right-hand) timing chain.

[Click here to learn about symbols, color coding, and icons used in this manual.](#)

13. Remove the bolts and the LH (left-hand) timing chain tensioner.

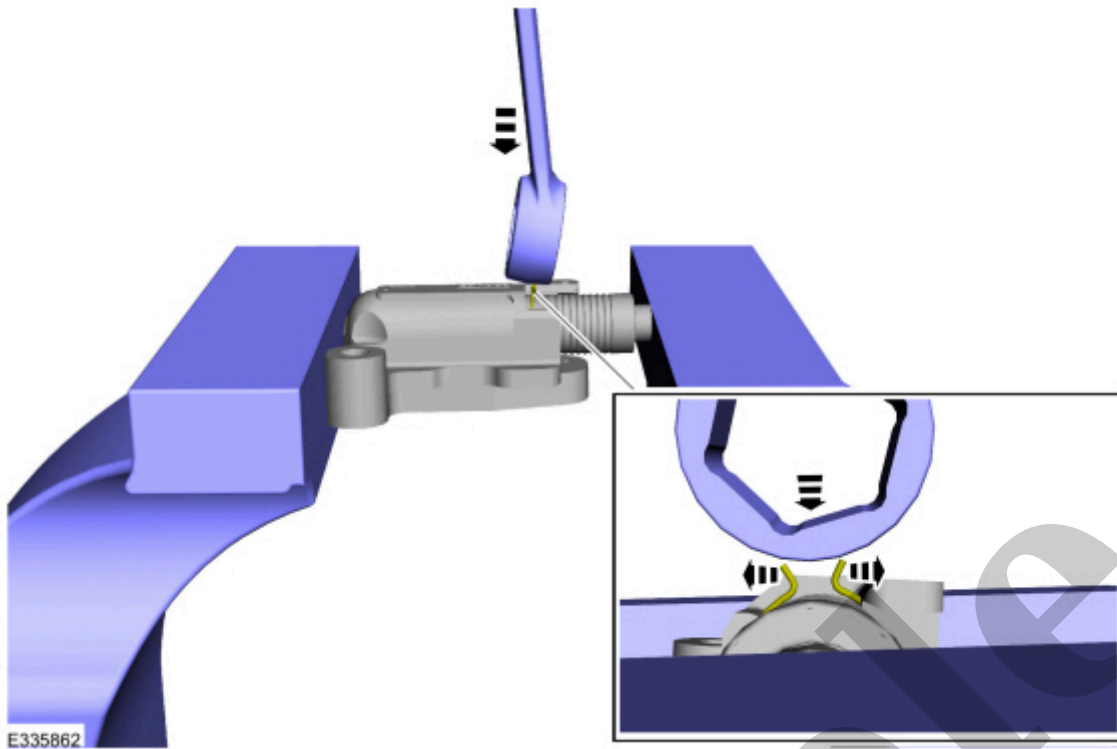


[Click here to learn about symbols, color coding, and icons used in this manual.](#)

## Installation

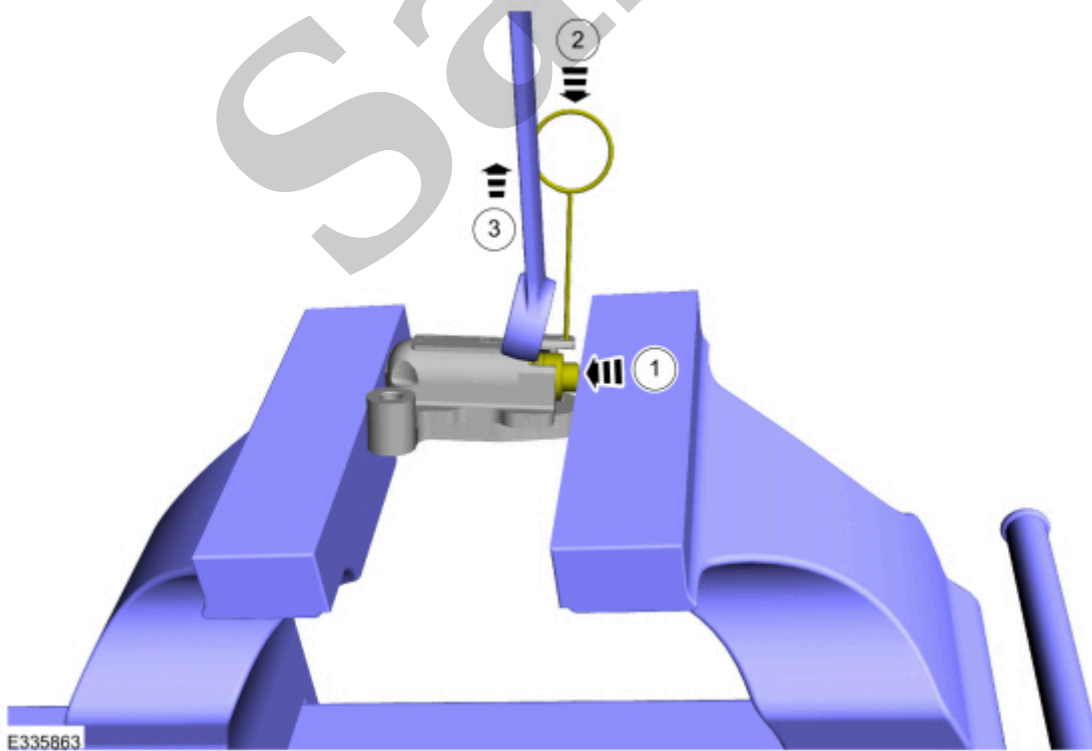
### LH timing chain tensioner

1. Position the tensioner in a soft-jawed vise.

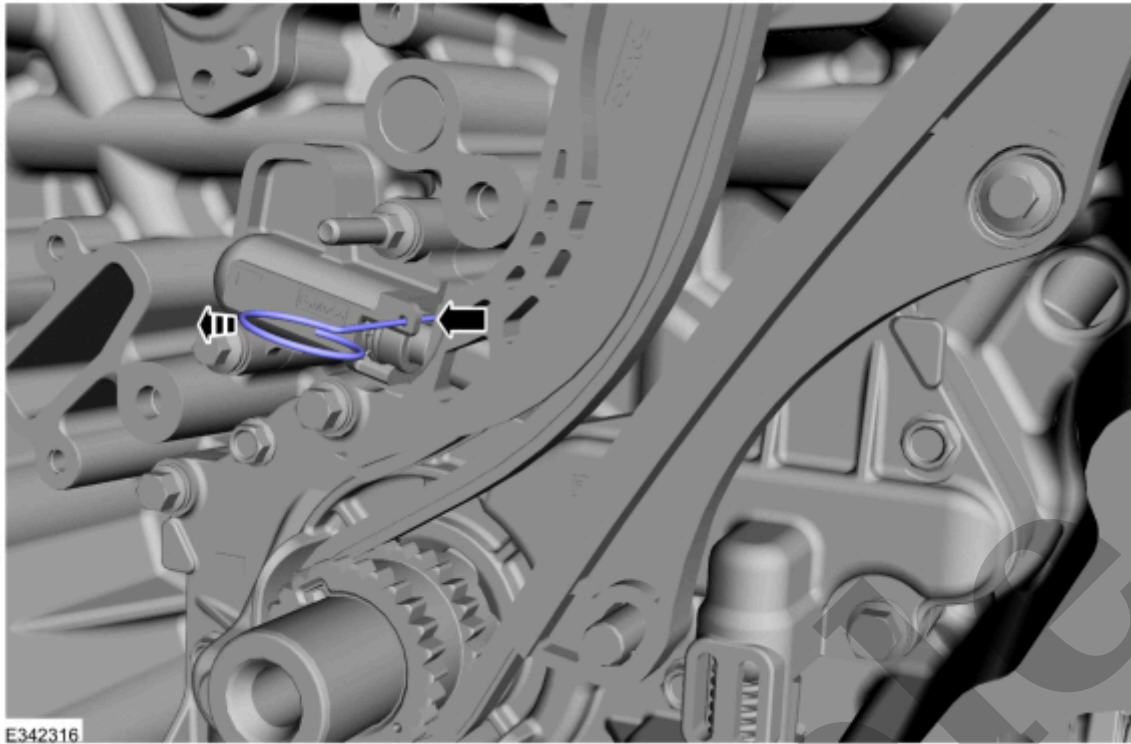


[Click here to learn about symbols, color coding, and icons used in this manual.](#)

3. 1. Using the soft-jawed vise, compress the piston to the reset position.
2. Install a locking pin in the 2 holes of the tensioner body to hold the piston in place.
3. Remove the commercially available tool and the tensioner.





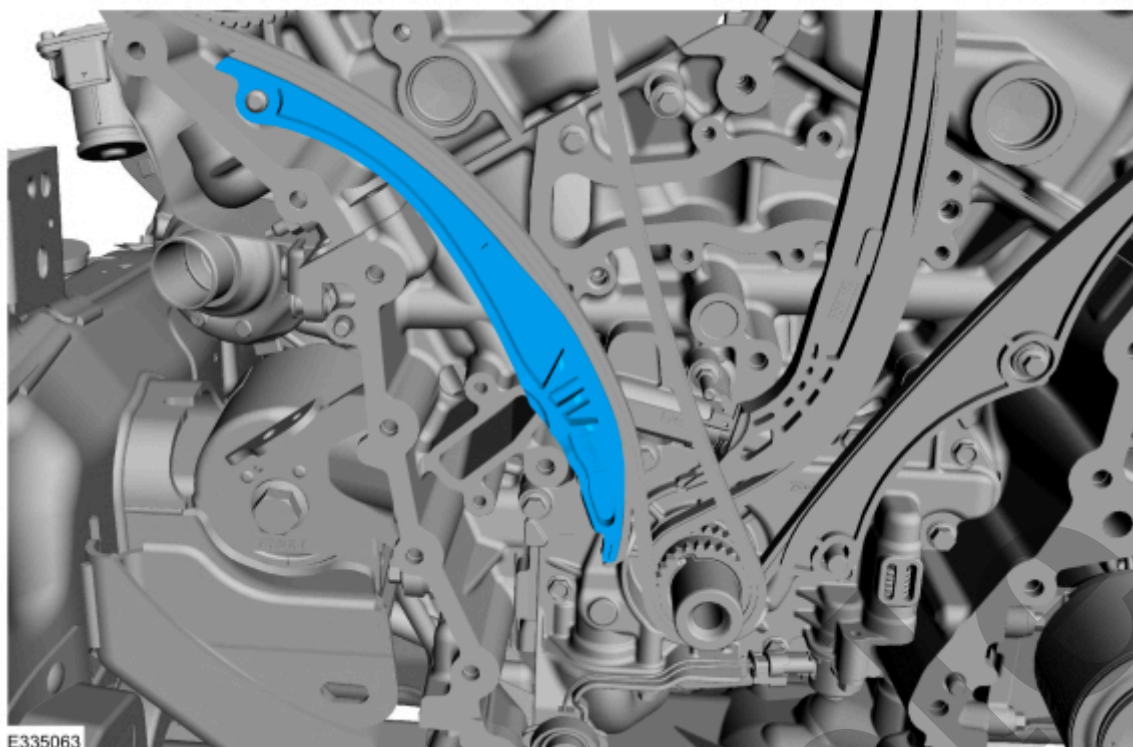


[Click here to learn about symbols, color coding, and icons used in this manual.](#)

6. Verify all scribe marks align.

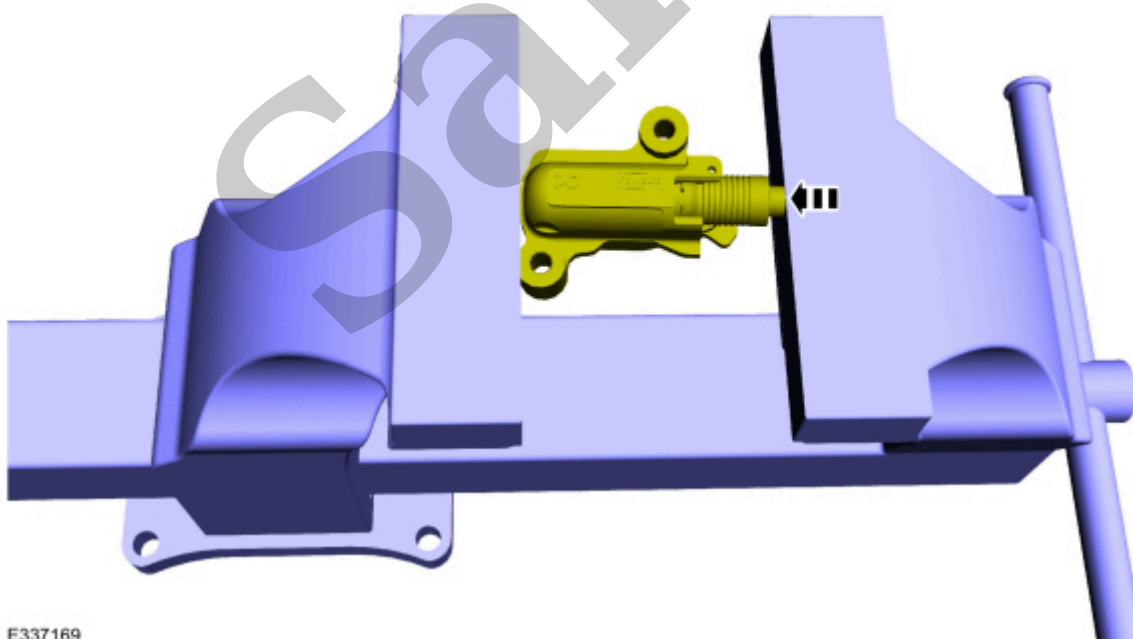


[Click here to learn about symbols, color coding, and icons used in this manual.](#)

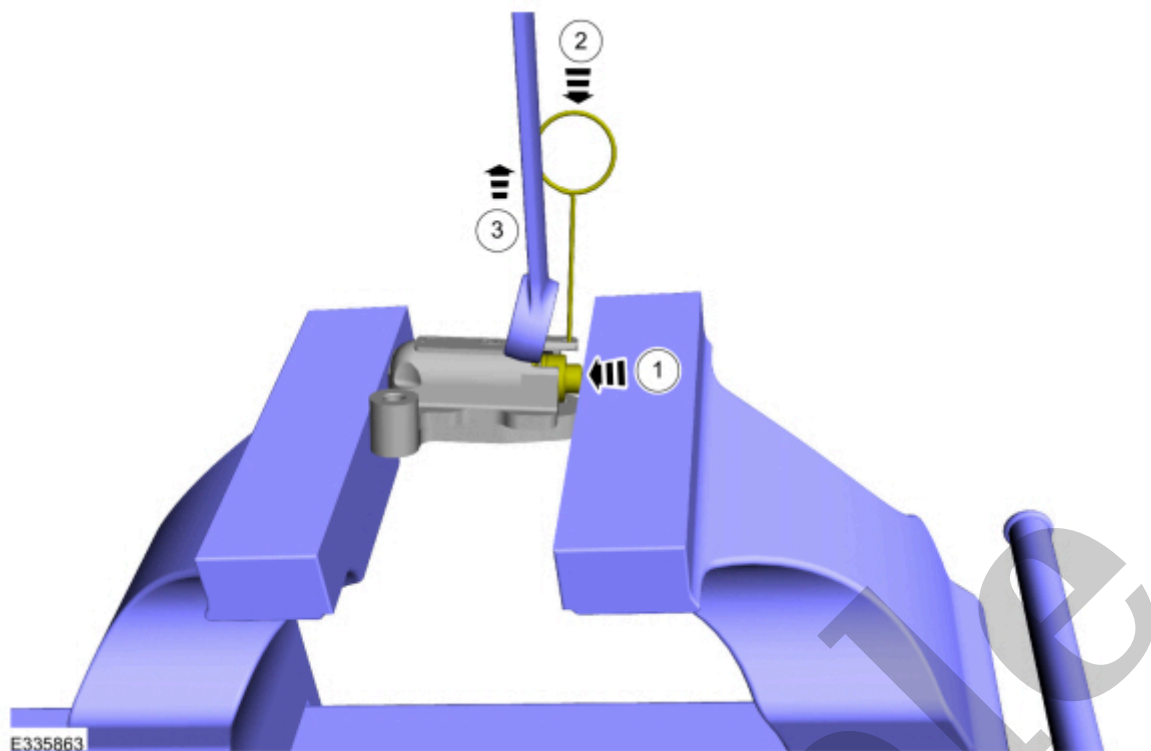


[Click here to learn about symbols, color coding, and icons used in this manual.](#)

9. Position the tensioner in a soft-jawed vise.



[Click here to learn about symbols, color coding, and icons used in this manual.](#)



[Click here to learn about symbols, color coding, and icons used in this manual.](#)

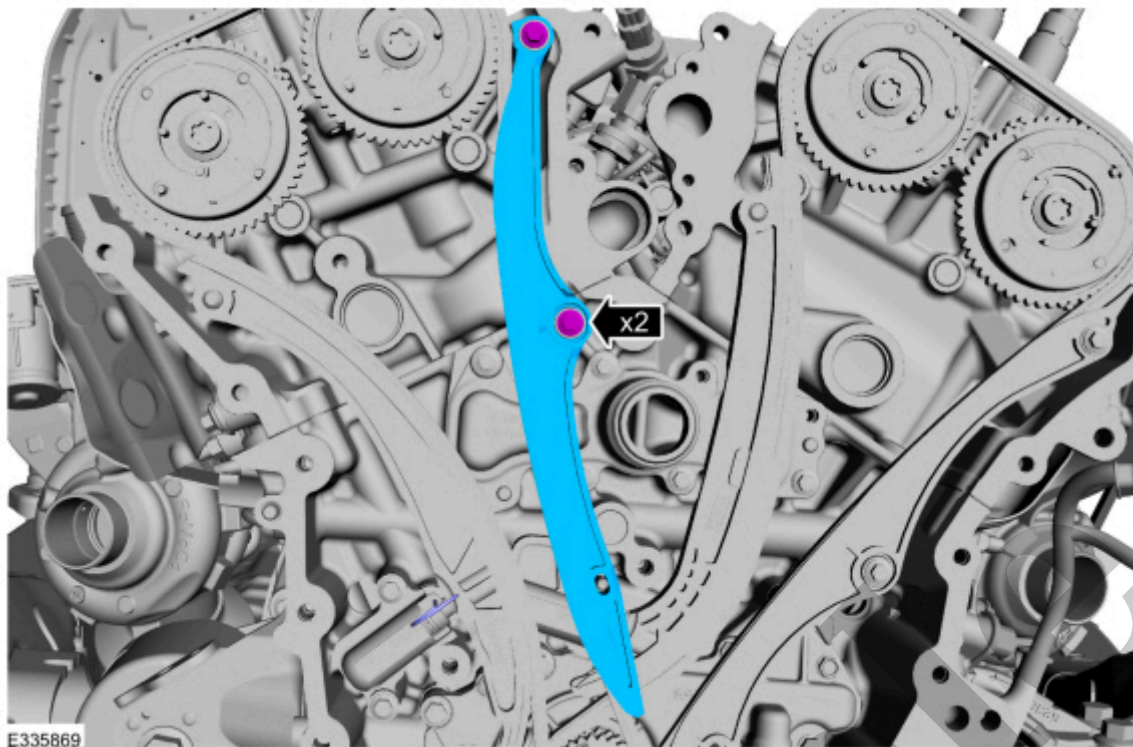
12. Position the RH (right-hand) timing chain tensioner with the end of the tensioner correctly engaged to the tensioner arm and install the fasteners.

***Torque :***

Stage 1: 89 lb.in (10 Nm)

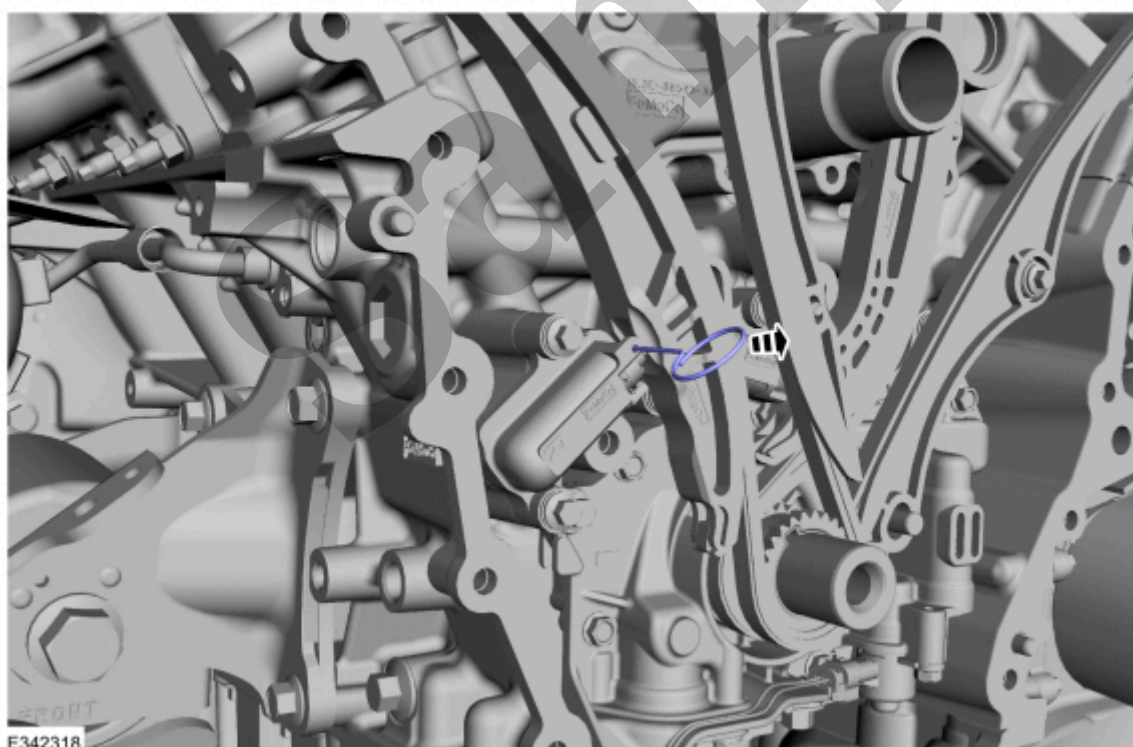
Stage 2: 30°





[Click here to learn about symbols, color coding, and icons used in this manual.](#)

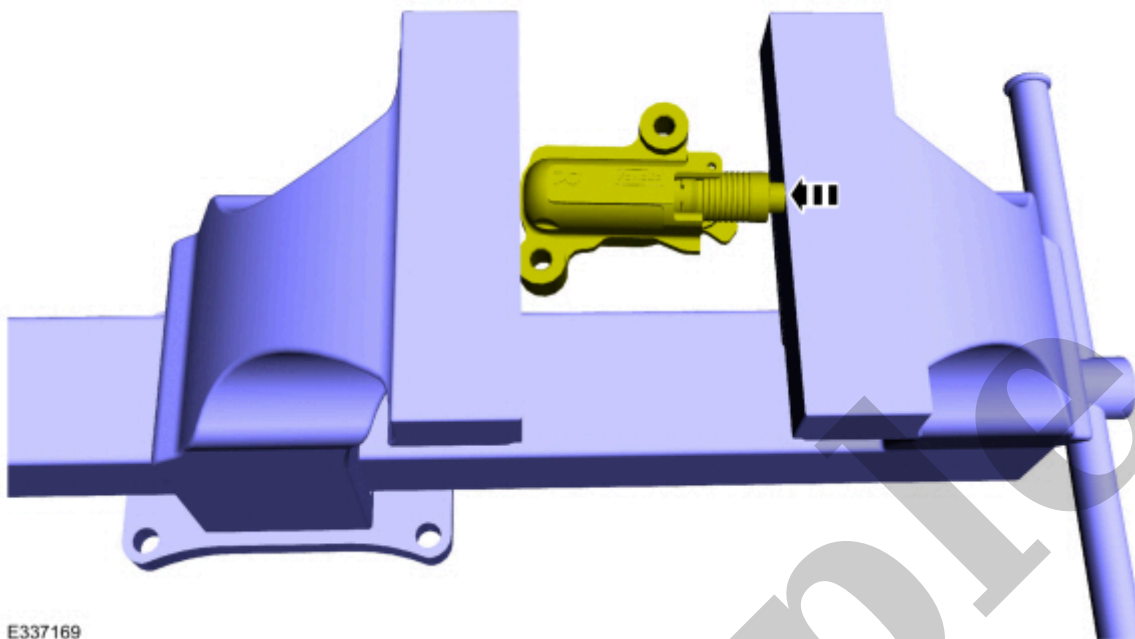
14. Remove the tensioner pins.



[Click here to learn about symbols, color coding, and icons used in this manual.](#)

15. Remove the crankshaft pulley bolt.

17. Position the tensioner in a soft-jawed vise.



E337169

[Click here to learn about symbols, color coding, and icons used in this manual.](#)

18. **NOTE**

Use of a commercially available tools with a curved radius in the range of 10mm - 15mm is suggested for use in resetting the ratchet clip. Examples are a 8mm closed end wrench, 12x12mm piece of bar stock, T40 to T50 Torx screwdriver or 3/8 wobble style socket extender.

Using a commercially available wrench, push down on the ratchet clip so the ratchet clip pushes outward.