

# Your Ultimate Source for OEM Repair Manuals

FactoryManuals.net is a great resource for anyone who wants to save money on repairs by doing their own work. The manuals provide detailed instructions and diagrams that make it easy to understand how to fix a vehicle.

## 2012 NISSAN Sentra OEM Service and Repair Workshop Manual

[Go to manual page](#)

Symptom			Possible cause	Action
A/C before getting in does not operate	Start condition of A/C before getting in is not satisfied	—	Li-ion battery charge level is low *	Charge Li-ion battery
		Request signal of A/C before getting in cannot be received	A/C before getting in request is transmitted from a place where radio waves do not reach	Transmit A/C request before getting in again in a place where radio waves can reach
			Vehicle is out of radio wave range	
	A/C system does not start	A/C auto amp does not recognize A/C before getting in	A/C auto amp is abnormal	Perform self-diagnosis of A/C auto amp
		—	A/C system power supply is abnormal	Refer to <a href="#">Diagnosis Procedure</a> .

\* : Only when there is no AC power input

Symptom		Possible cause	Action	
Timer charge or remote charge does not start	Normal charge is not possible.	Normal charge start conditions are not satisfied.	Refer to <a href="#">Diagnosis Procedure</a> .	
	Timer charge start conditions are not satisfied.	—	Timer charge is not set. Set timer charge.	
	Remote charge start conditions are not satisfied.	Remote charge request is not sent to Information Center (Nissan CARWINGS Data Center).	Request is sent from out of service area.	Send remote charge request in service area.
		Remote charge request is not sent from the Information Center (Nissan CARWINGS Data Center).	Vehicle is located out of service area.	Send remote charge request in service area.
	—		Others	Refer to <a href="#">Symptom Description</a> .

Sample

## On-board diagnosis device (OBD) diagnosis (EV system warning lamp check)

---

After turning the power switch ON, check that it turns ON for about 2 seconds and then turns OFF.

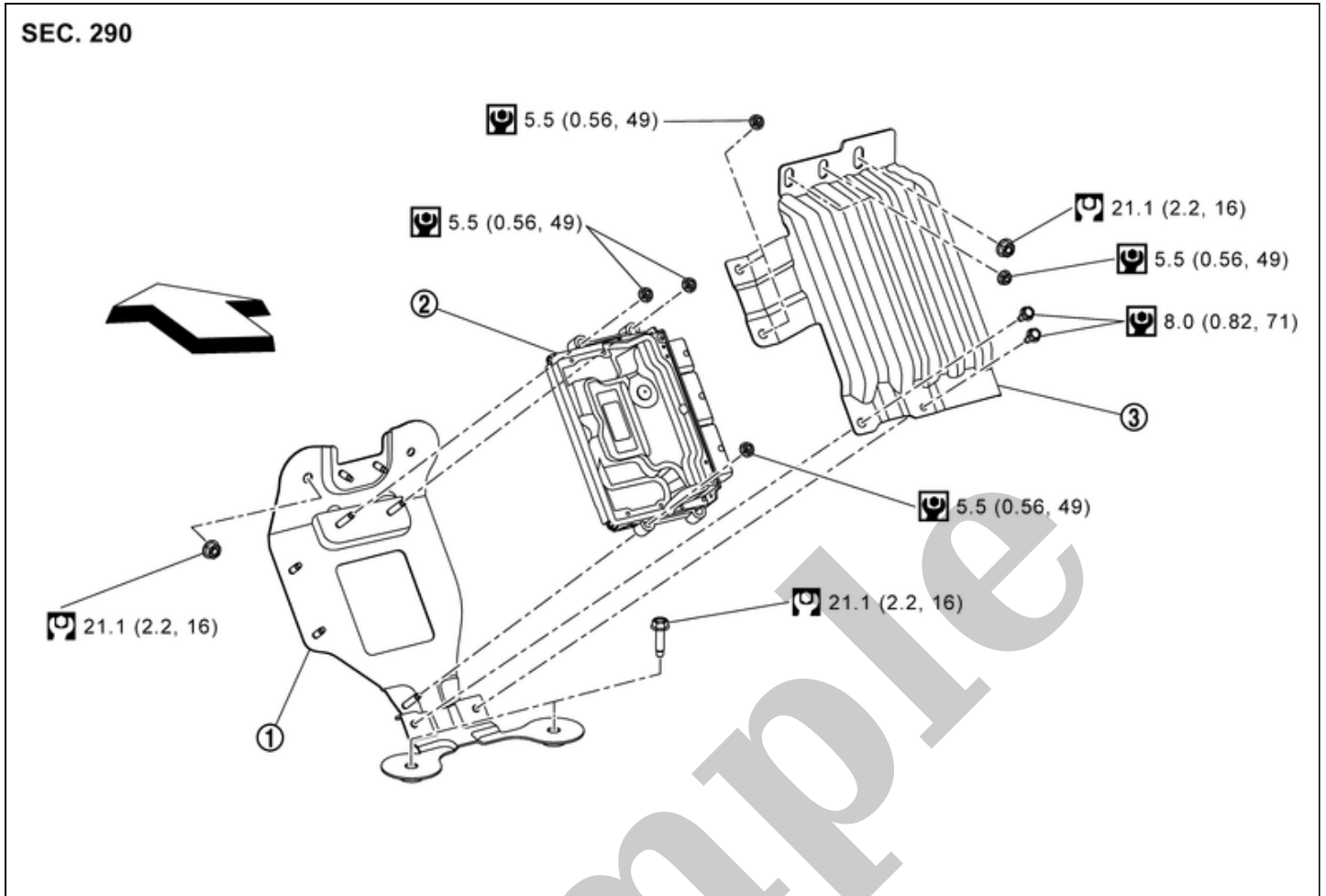
- If EV system warning lamp does not turn ON when power switch is turned ON, Refer to [Work flow](#).
- If EV system warning lamp remains ON after READY transition, perform full self-diagnosis on CONSULT screen and perform trouble diagnosis of detected DTC.

Sample

# VCM : Exploded View

RPR-001931881

## SEC. 290



RPR-001890314-01-000277979

①	VCM bracket	②	VCM	③	VCM cover
↖	Vehicle front				
🔩	: N·m (kg-m, ft-lb)				
🔩	: N·m (kg-m, in-lb)				

## Removal

---

- 1 Turn power switch OFF.
- 2 Disconnect 12V battery negative terminal. Refer to [PRECAUTIONS FOR REMOVING BATTERY TERMINAL : Precautions](#)(66kWh LI-ION BATTERY), [PRECAUTIONS FOR REMOVING BATTERY TERMINAL : Precautions](#)(91kWh LI-ION BATTERY).
- 3 Remove instrument lower cover center. Refer to [Removal & Installation](#).
- 4 Turn over right front part of floor carpet and remove front floor spacer RH. Refer to [Exploded View](#).
- 5 Remove mounting nuts and move CPLC to a suitable place for removed parts.
- 6 Remove mounting bolts and nuts from the VCM cover.
- 7 Remove the VCM cover
- 8 Disconnect VCM harness connector. Refer to [Harness Connector](#).
- 9 Remove VCM mounting nuts.
- 10 Remove VCM.
- 11 Remove VCM bracket mounting nuts.
- 12 Remove VCM bracket.

## INSTALLATION

---

Install in the reverse order of removal.

**CAUTION:**

When replacing the VCM, surely perform in accordance with "Work Procedures". Refer to [Work Procedure](#).

## Self Diagnosis Result

DTC	Items	EV system warning lamp	Trip	Reference page
P0000-00	Internal error	×	1	<a href="#">DTC Description</a>
P0504-00	Brake Switch	—	2	<a href="#">DTC Description</a>
P0530-16	A/C refrigerant pressure sensor A	—	2	<a href="#">DTC Description</a>
P0530-17	A/C refrigerant pressure sensor A	—	2	<a href="#">DTC Description</a>
P0560-16	System voltage	×	1	<a href="#">DTC Description</a>
P0560-17	System voltage	×	1	<a href="#">DTC Description</a>
P0560-22	System voltage	—	1	<a href="#">DTC Description</a>
P0560-61	System voltage	×	2	<a href="#">DTC Description</a>
P05B1-02	Active grille air shutter B	—	1	<a href="#">DTC Description</a>
P05B1-07	Active grille air shutter B	—	1	<a href="#">DTC Description</a>
P05B1-77	Active grille air shutter B	—	1	<a href="#">DTC Description</a>
P05B1-96	Active grille air shutter B	—	1	<a href="#">DTC Description</a>
P05B1-97	Active grille air shutter B	—	1	<a href="#">DTC Description</a>
P05B1-F7	Active grille air shutter B	—	1	<a href="#">DTC Description</a>
P0641-16	Sensor reference voltage A	×	1	<a href="#">DTC Description</a>
P0641-17	Sensor reference voltage A	×	1	<a href="#">DTC Description</a>
P0651-16	Sensor Reference Voltage B	×	1	<a href="#">DTC Description</a>
P0651-17	Sensor Reference Voltage B	×	1	<a href="#">DTC Description</a>
P0657-11	Actuator supply voltage B	—	1	<a href="#">DTC Description</a>
P0657-12	Actuator supply voltage B	—	1	<a href="#">DTC Description</a>
P0657-13	Actuator supply voltage B	—	1	<a href="#">DTC Description</a>
P0685-12	ECM power relay	—	2	<a href="#">DTC Description</a>
P0685-14	ECM power relay	—	2	<a href="#">DTC Description</a>
P0697-16	Sensor reference voltage C	×	1	<a href="#">DTC Description</a>
P0697-17	Sensor reference voltage C	×	1	<a href="#">DTC Description</a>
P0A7E-F1	Battery pack pressure sensor	—	1	<a href="#">DTC Description</a>
P0AA6-23	High voltage battery voltage system isolation	×	1	<a href="#">DTC Description</a>
P0AE1-73	High voltage battery precharge contactor	×	1	<a href="#">DTC Description</a>
P0AE2-72	High voltage battery precharge contactor	×	1	<a href="#">DTC Description</a>
P0AE2-73	High voltage battery precharge contactor	×	1	<a href="#">DTC Description</a>

DTC	Items	EV system warning lamp	Trip	Reference page
P0B33-63	High voltage service disconnect	×	1	<a href="#">DTC Description</a>
P0CA6-19	High voltage battery charging current	—	1	<a href="#">DTC Description</a>
P0D0A-11	Battery charge system positive contactor A	×	Immediate detection	<a href="#">DTC Description</a>
P0D0A-12	Battery charge system positive contactor A	×	Immediate detection	<a href="#">DTC Description</a>
P0D0A-13	Battery charge system positive contactor A	×	Immediate detection	<a href="#">DTC Description</a>
P0D11-11	Battery charge system negative contactor A	×	Immediate detection	<a href="#">DTC Description</a>
P0D11-12	Battery charge system negative contactor A	×	Immediate detection	<a href="#">DTC Description</a>
P0D11-13	Battery charge system negative contactor A	×	Immediate detection	<a href="#">DTC Description</a>
P0D98-11	Battery charger coupler unlock control	×	Immediate detection	<a href="#">DTC Description</a>
P0D98-12	Battery charger coupler unlock control	×	Immediate detection	<a href="#">DTC Description</a>
P0D98-13	Battery charger coupler unlock control	×	Immediate detection	<a href="#">DTC Description</a>
P1001-78	Battery coolant heater connect	×	1	<a href="#">DTC Description</a>
P102C-01	Component Indicating a Failure	×	Immediate detection	<a href="#">DTC Description</a>
P102D-01	Electric water pump	×	1	<a href="#">DTC Description</a>
P102D-7B	Electric water pump	×	1	<a href="#">DTC Description</a>
P102D-94	Electric water pump	×	1	<a href="#">DTC Description</a>
P102D-96	Electric water pump	×	1	<a href="#">DTC Description</a>
P102D-98	Electric water pump	×	1	<a href="#">DTC Description</a>
P1033-11	High voltage PTC heater	—	1	<a href="#">DTC Description</a>
P1035-49	Internal circuit error	×	1	<a href="#">DTC Description</a>
P1041-87	Front traction motor inverter	—	1	<a href="#">DTC Description</a>
P1041-96	Front traction motor inverter	—	1	<a href="#">DTC Description</a>
P104B-16	Quick charge port temperature sensor	×	Immediate detection	<a href="#">DTC Description</a>
P104B-17	Quick charge port temperature sensor	×	Immediate detection	<a href="#">DTC Description</a>
P104C-16	Quick charge port temperature sensor	×	Immediate detection	<a href="#">DTC Description</a>
P104C-17	Quick charge port temperature sensor	×	Immediate detection	<a href="#">DTC Description</a>
P12A8-	Brake switch	—	1	<a href="#">SIEMD-7196931</a>



DTC	Items	EV system warning lamp	Trip	Reference page
08				
P14C1-00	Stop lamp switch (BCM)	—	1	<a href="#">DTC Description</a>
P1503-02	Active grille shutter 1	—	1	<a href="#">DTC Description</a>
P1503-07	Active grille shutter 1	—	1	<a href="#">DTC Description</a>
P1503-08	Active grille shutter 1	—	1	<a href="#">SIEMD-7196944</a>
P1503-77	Active grille shutter 1	—	1	<a href="#">DTC Description</a>
P1503-96	Active grille shutter 1	—	1	<a href="#">DTC Description</a>
P1503-97	Active grille shutter 1	—	1	<a href="#">DTC Description</a>
P1503-F7	Active grille shutter 1	—	1	<a href="#">DTC Description</a>
P1526-00	Vehicle speed sensor	—	1	<a href="#">DTC Description</a>
P1536-00	Brake switch	—	1	<a href="#">DTC Description</a>
P1564-00	ASCD switch	—	1	<a href="#">DTC Description</a>
P1572-00	Brake pedal position switch	—	1	<a href="#">DTC Description</a>
P1596-96	High voltage connector interlock	×	1	<a href="#">DTC Description</a>
P1597-F1	High voltage connector interlock	×	1	<a href="#">DTC Description</a>
P1598-96	Interlock sensors	×	1	<a href="#">DTC Description</a>
P159A-93	Electric water pump	×	1	<a href="#">DTC Description</a>
P159A-96	Electric water pump	×	1	<a href="#">DTC Description</a>
P159C-93	Electric water pump	×	1	<a href="#">DTC Description</a>
P159C-96	Electric water pump	×	1	<a href="#">DTC Description</a>
P159D-23	High voltage battery	—	1	<a href="#">DTC Description</a>
P15A2-98	Traction motor system temperature	—	1	<a href="#">DTC Description</a>
P15A6-13	Charging system	—	1	<a href="#">DTC Description</a>
P15A7-31	Charging system	—	1	<a href="#">DTC Description</a>
P15A9-24	Charging device power supply	—	1	<a href="#">DTC Description</a>
P15A9-2F	Charging device power supply	—	Immediate detection	<a href="#">DTC Description</a>
P15AA-73	Charging system	×	1	<a href="#">DTC Description</a>
P15B8-87	Communication error	—	2	<a href="#">DTC Description</a>
P15BA-72	Charging system	×	1	<a href="#">DTC Description</a>
P15BE-96	Service plug interlock	×	1	<a href="#">DTC Description</a>

DTC	Items	EV system warning lamp	Trip	Reference page
P15BF-96	High voltage connector interlock	×	1	<a href="#">DTC Description</a>
P15C5-78	High voltage connector interlock	×	1	<a href="#">DTC Description</a>
P15D3-78	High voltage connector interlock	×	1	<a href="#">DTC Description</a>
P15F0-11	Charge port lid	×	Immediate detection	<a href="#">SIEMD-7197030</a>
P15F0-12	Charge port lid	×	Immediate detection	<a href="#">DTC Description</a>
P15F0-13	Charge port lid	×	Immediate detection	<a href="#">DTC Description</a>
P15FA-11	Charge port lock	×	Immediate detection	<a href="#">DTC Description</a>
P15FA-12	Charge port lock	×	Immediate detection	<a href="#">DTC Description</a>
P15FA-13	Charge port lock	×	Immediate detection	<a href="#">DTC Description</a>
P15FB-01	Charging system	×	1	<a href="#">DTC Description</a>
P15FE-16	Charge port lock	×	Immediate detection	<a href="#">SIEMD-7197188</a>
P15FE-17	Charge port lock	×	Immediate detection	<a href="#">DTC Description</a>
P15FE-64	Charge port lock	×	Immediate detection	<a href="#">DTC Description</a>
P1604-72	Charge port lock	—	Immediate detection	<a href="#">DTC Description</a>
P1604-73	Charge port lock	×	Immediate detection	<a href="#">DTC Description</a>
P1605-63	Charging system	—	1	<a href="#">DTC Description</a>
P160C-04	Internal error	×	1	<a href="#">DTC Description</a>
P1613-49	Internal circuit error	×	1	<a href="#">DTC Description</a>
P161C-49	Internal circuit error	×	1	<a href="#">DTC Description</a>
P161C-F1	Internal circuit error	×	1	<a href="#">DTC Description</a>
P161E-96	High voltage connector interlock	×	1	<a href="#">DTC Description</a>
P161F-96	High voltage connector interlock	×	1	<a href="#">DTC Description</a>
P1630-63	Electric water pump	×	1	<a href="#">DTC Description</a>
P1638-98	Charge connector temperature	—	Immediate detection	<a href="#">DTC Description</a>
P1638-F9	Charge connector temperature	—	1	<a href="#">DTC Description</a>
P163E-62	Charging system	—	Immediate detection	<a href="#">DTC Description</a>
P163F-94	Charging system	—	1	<a href="#">DTC Description</a>