

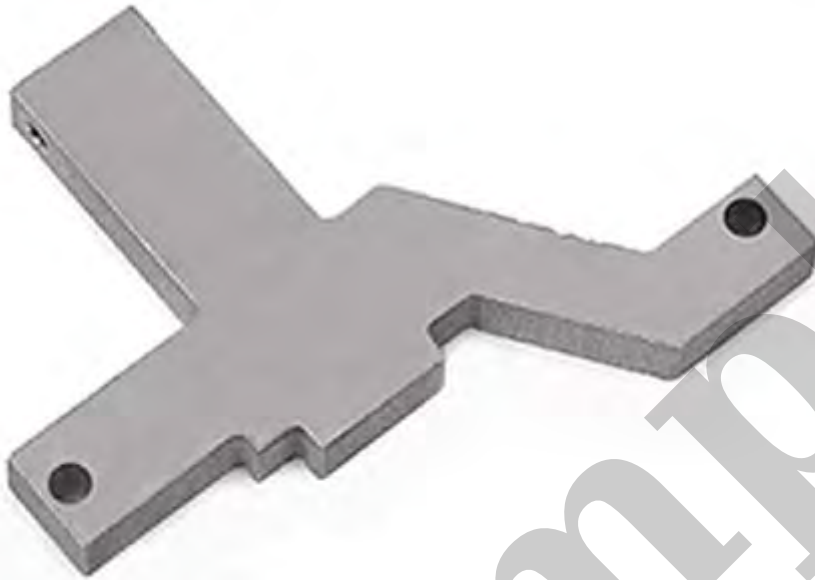
Your Ultimate Source for OEM Repair Manuals

FactoryManuals.net is a great resource for anyone who wants to save money on repairs by doing their own work. The manuals provide detailed instructions and diagrams that make it easy to understand how to fix a vehicle.

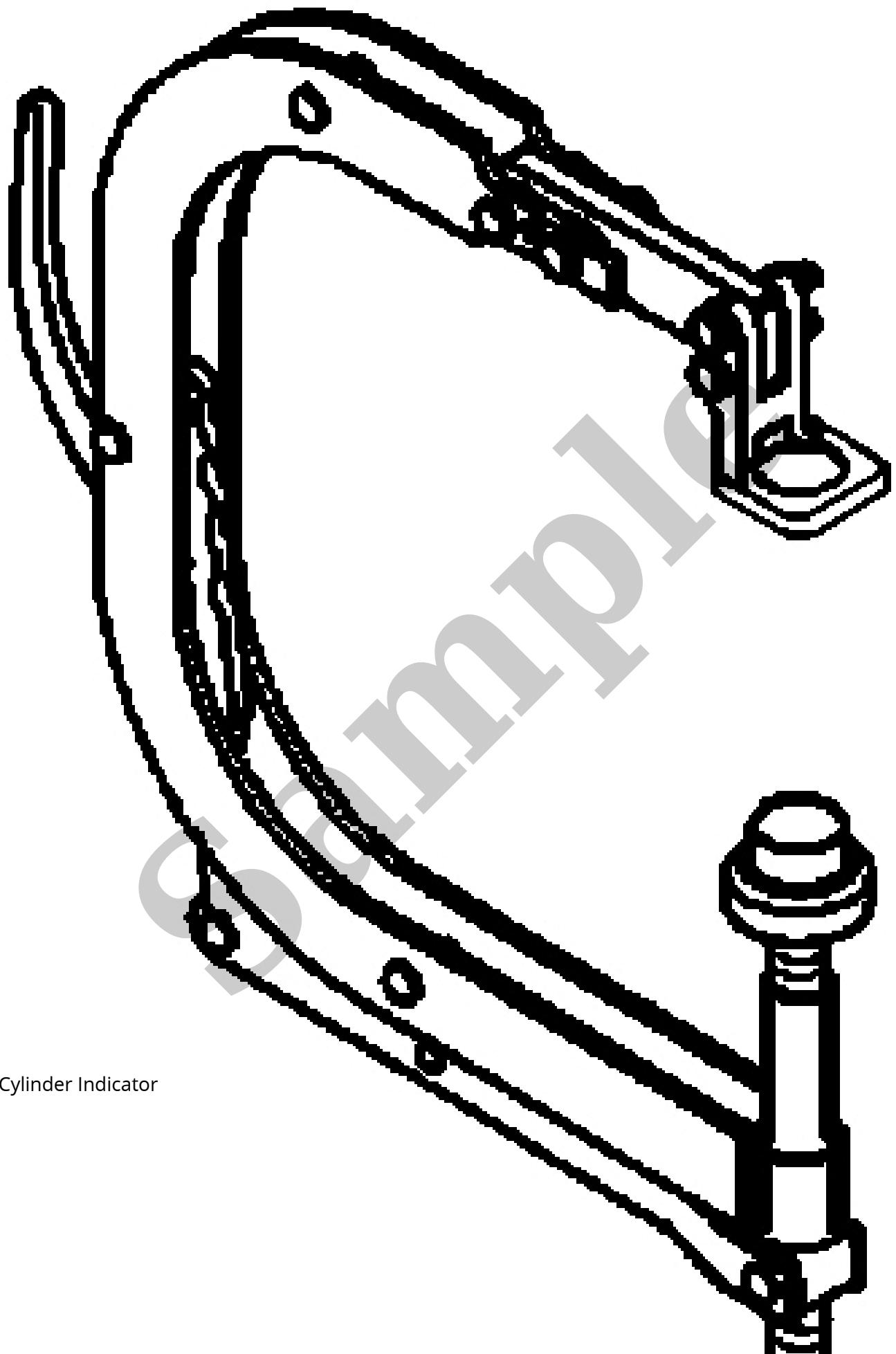
2011 JEEP Compass OEM Service and Repair Workshop Manual

[Go to manual page](#)

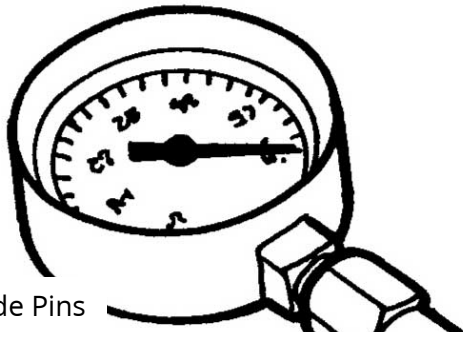
Check Tool, Tone Wheel Right



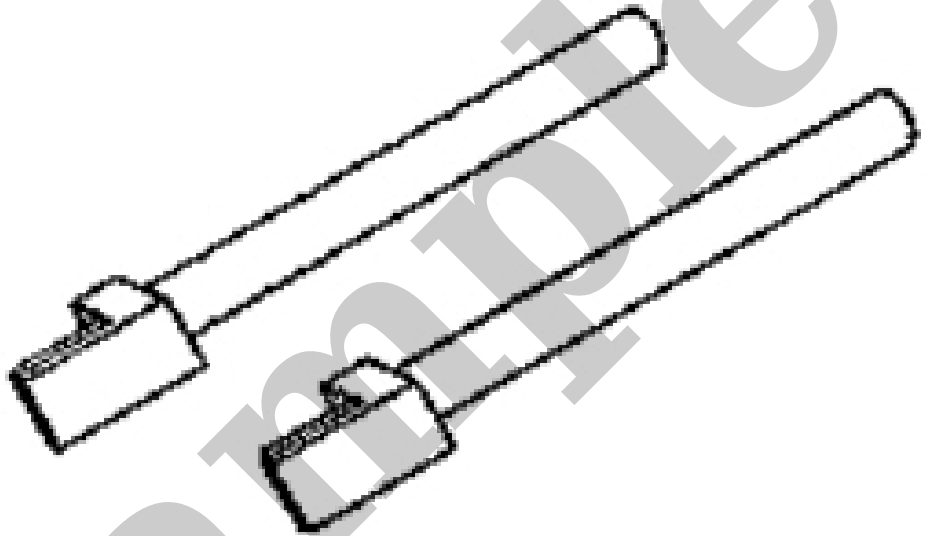
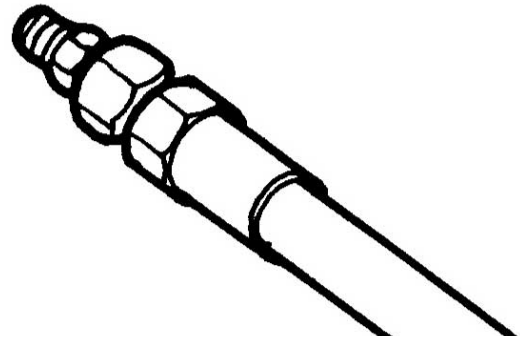
Check Tool, Tone Wheel Left



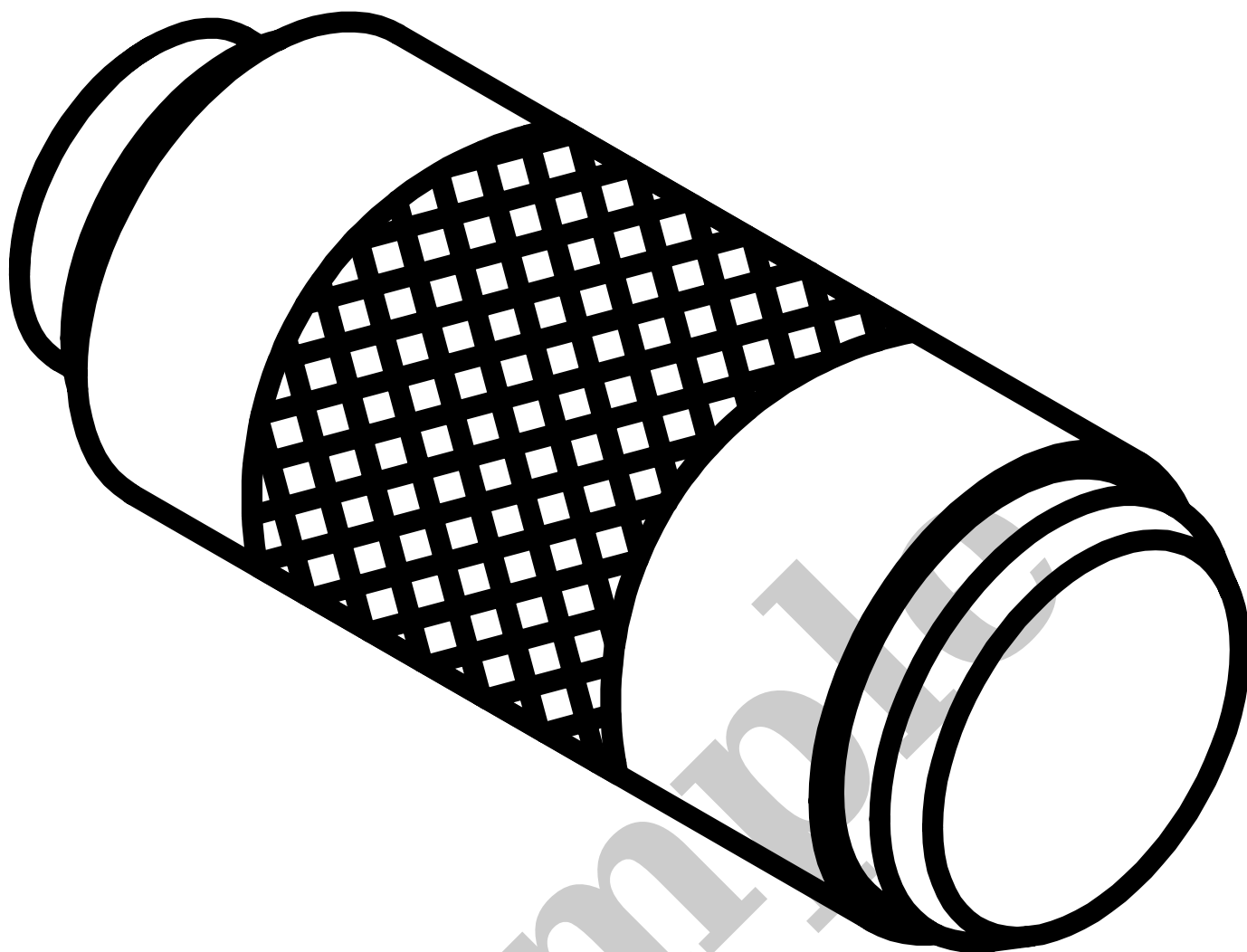
Cylinder Indicator



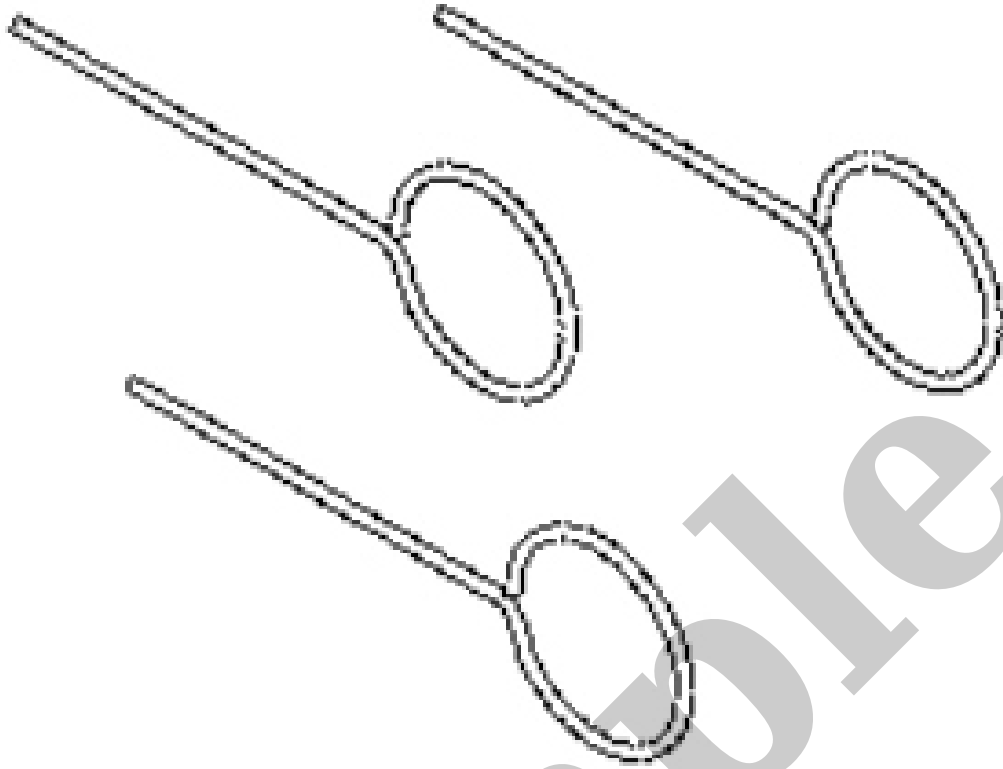
Guide Pins



Holder, Camshaft



Installer, Crankshaft Front Oil Seal



Remover, Seal



4. Install the WL engine support kit on the left and right strut towers and radiator support.

5. Secure the

Fixture, Driveline Support

YOUR CURRENT VEHICLE

Engine Gasket Surface Preparation

ENGINE GASKET SURFACE PREPARATION



1 - Abrasive Pad

2 - 3M Roloc™ Bristle Disc

3 - Plastic/Wood Scraper

To ensure engine gasket sealing, proper surface preparation must be performed, especially with the use of aluminum engine components and multi-layer steel cylinder head gaskets.

DO NOT USE THE FOLLOWING TO CLEAN GASKET SURFACES:

- Metal scraper.
- Abrasive pad or paper to clean cylinder block and head.
- High speed power tool with an abrasive pad or a wire brush.

YOUR CURRENT VEHICLE

Head Bolt Thread Repair

HEAD BOLT THREAD REPAIR

NOTE

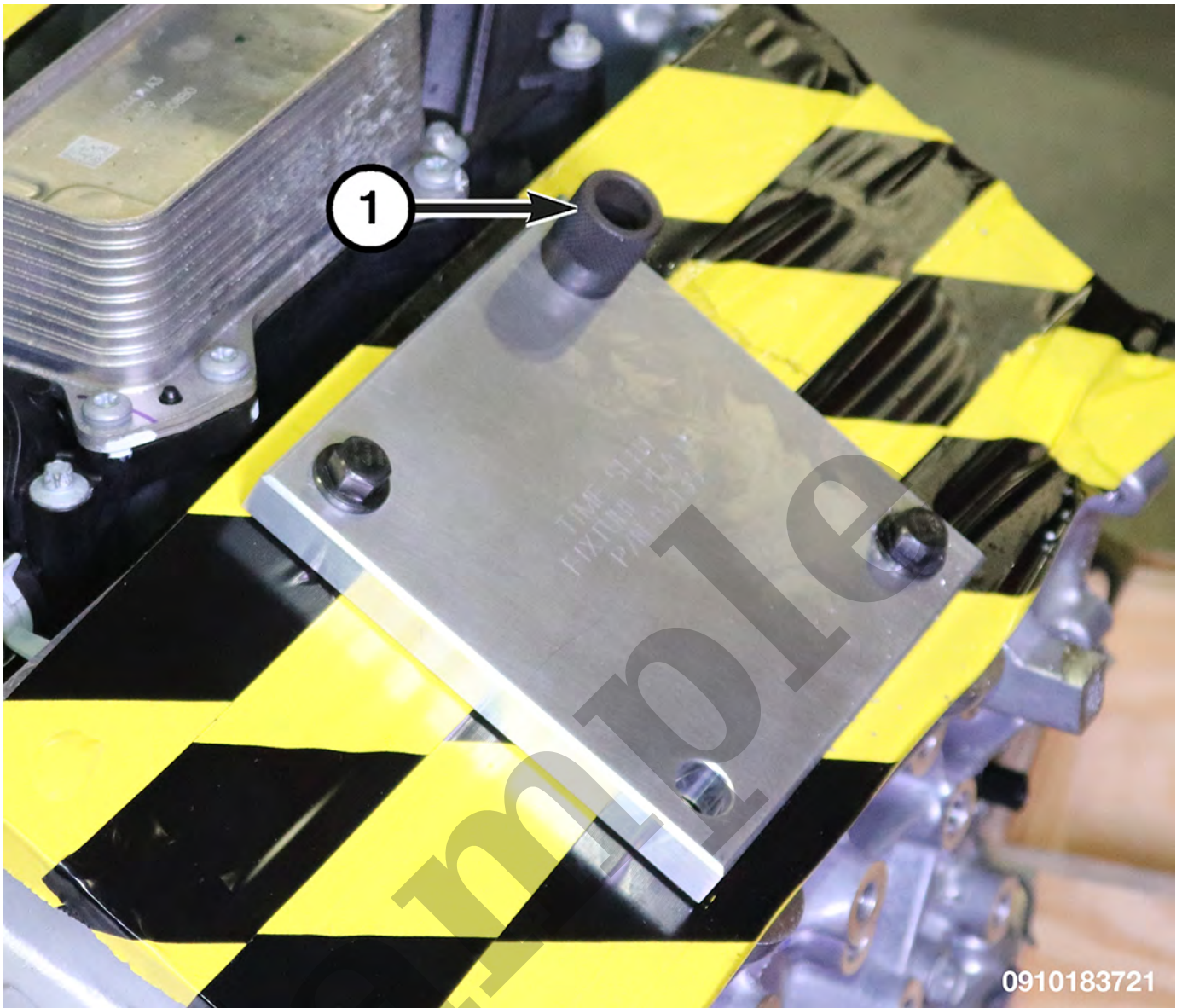
The following procedure is performed using the **TFC8313 3.6L Cylinder Head Bolt Thread Repair Kit ..**



0910184292

1 - Drill Stop Collar

2 - Bottom Cutting Edge



1 - Drill Bushing

6. Install the drill bushing into the fixture.