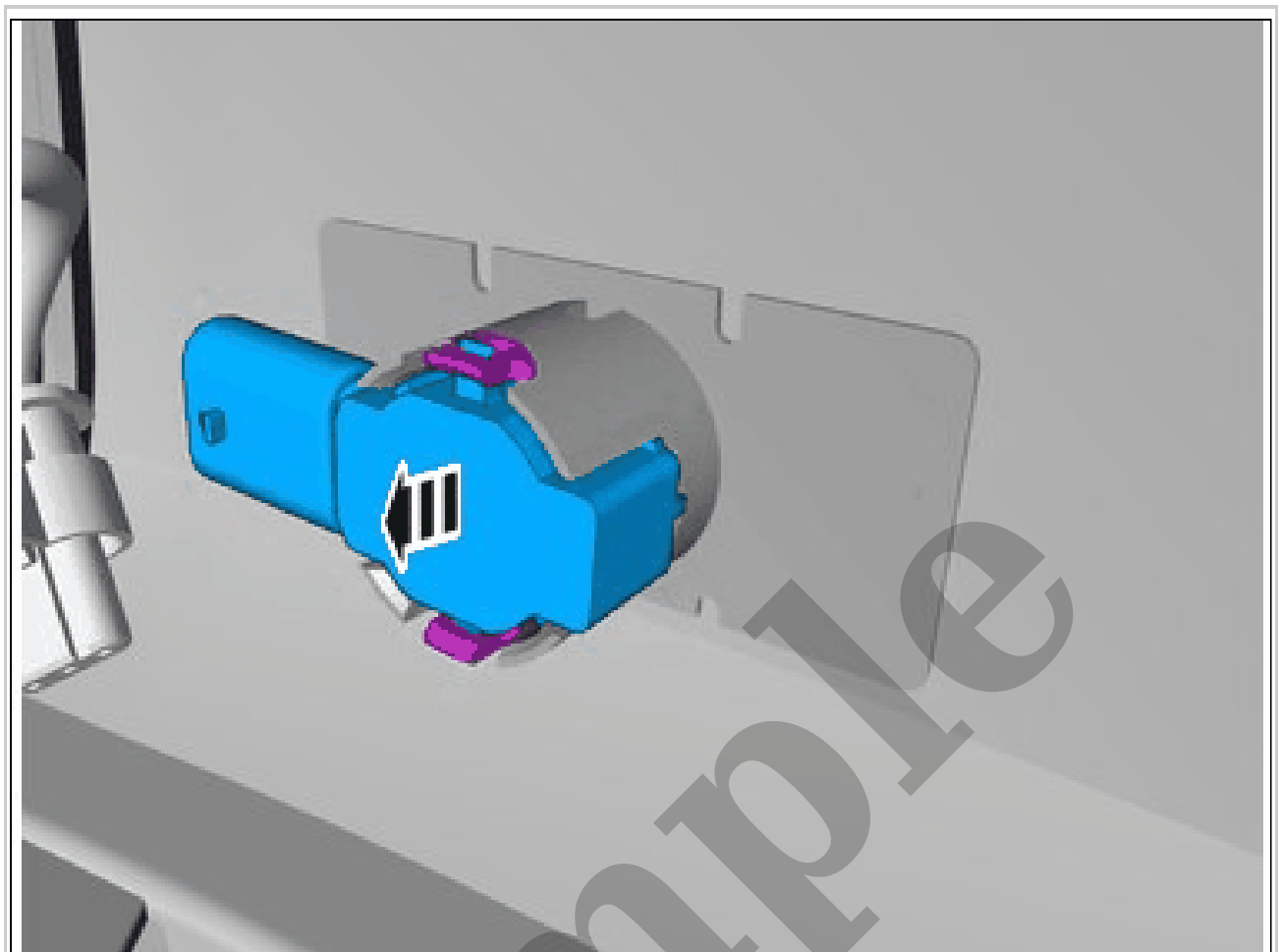


Your Ultimate Source for OEM Repair Manuals

FactoryManuals.net is a great resource for anyone who wants to save money on repairs by doing their own work. The manuals provide detailed instructions and diagrams that make it easy to understand how to fix a vehicle.

2010 VOLVO XC60 OEM Service and Repair Workshop Manual

[Go to manual page](#)



Courtesy of VOLVO CARS CORPORATION

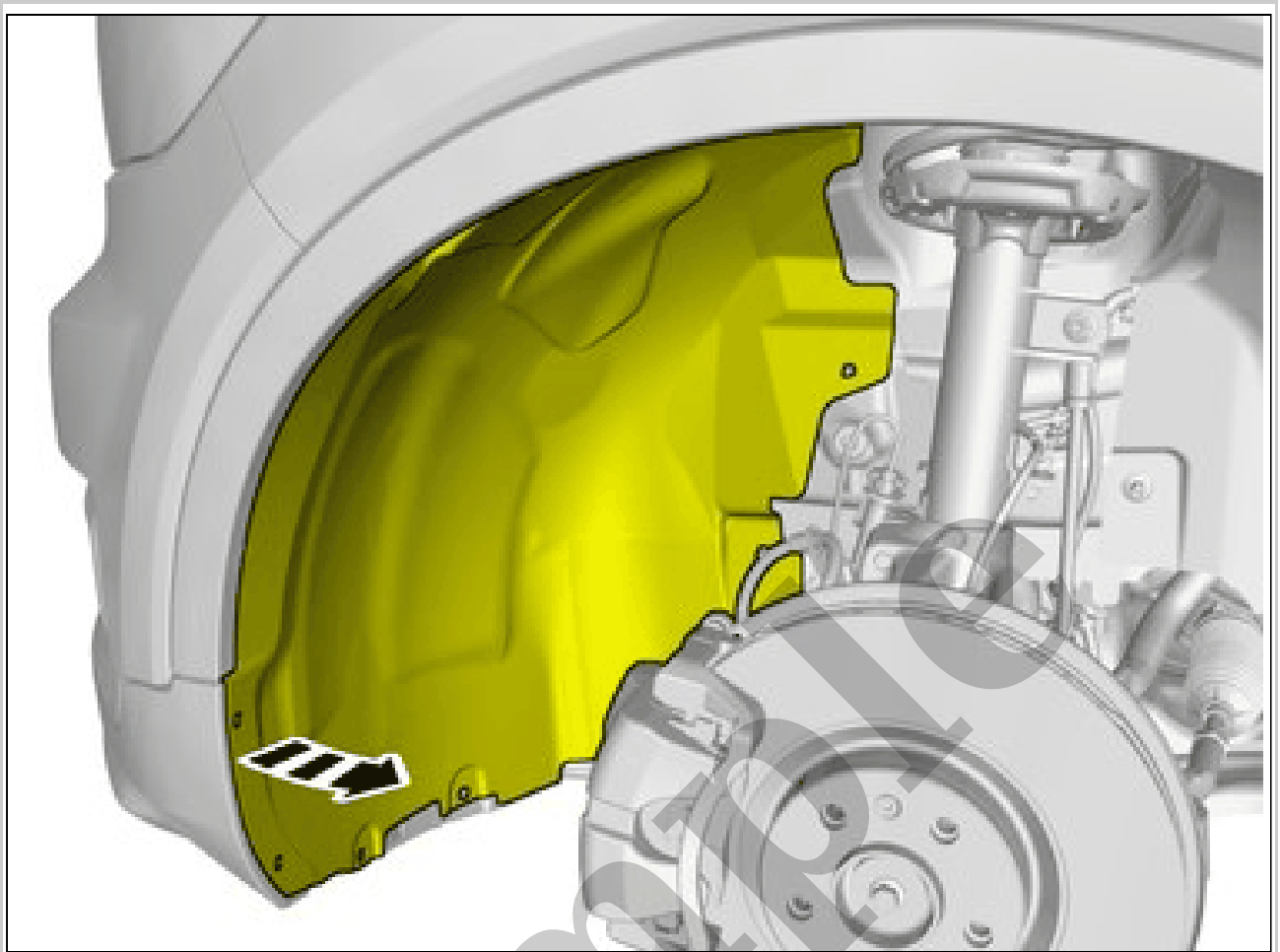
Release the catches.
Remove the marked part.

PARKING ASSISTANCE SENSOR, FRONT, OUTER > PARKING ASSISTANCE SENSOR, FRONT, OUTER [2018-2020 | 2021-2022, B4204T18 | 2021-2022, B4204T47] > INSTALLATION

NOTE: *The following steps are only necessary when installing a new component.*

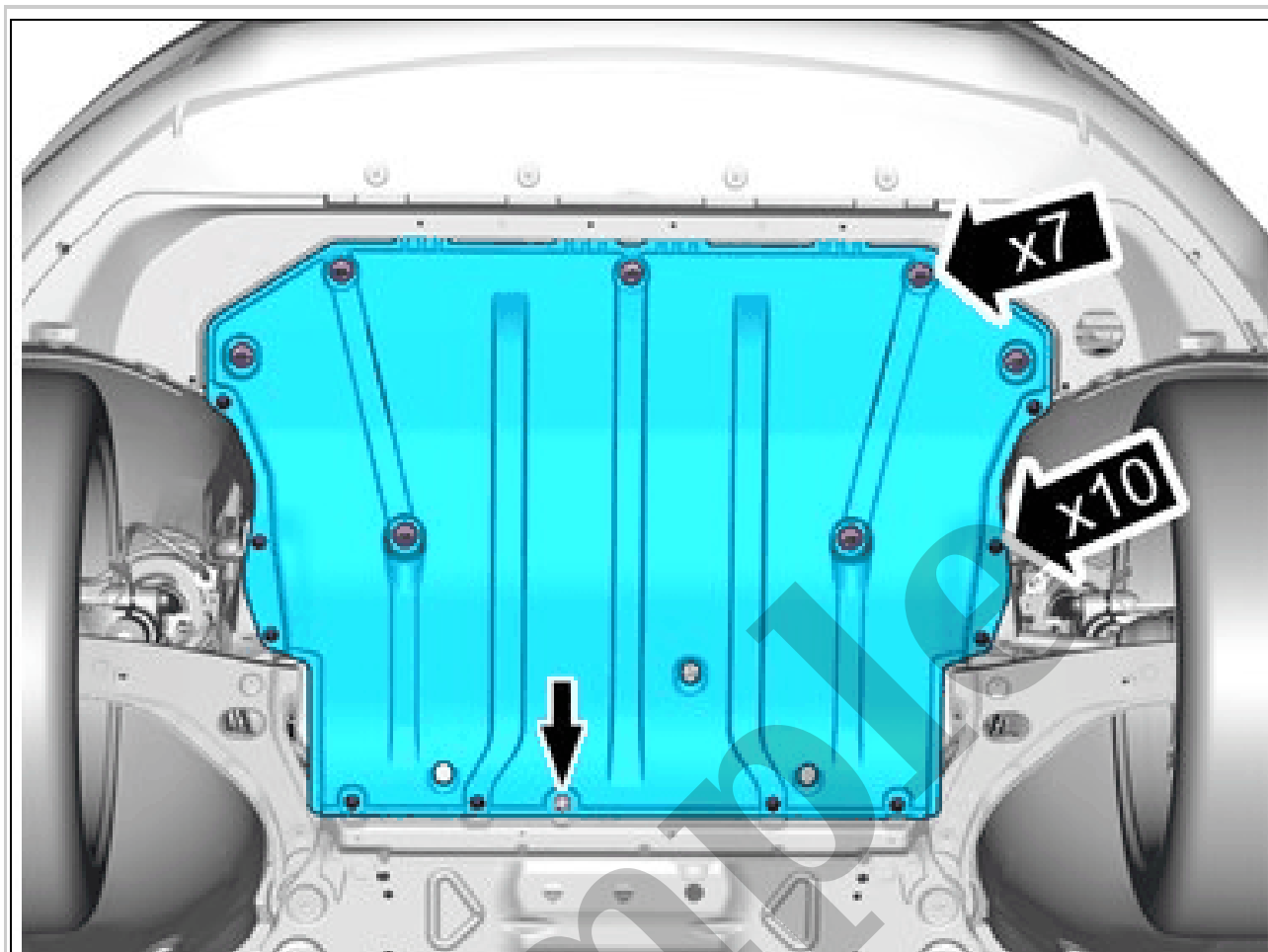
Component is to be painted in the same color as the vehicle.
To install, reverse the removal procedure.

PARKING ASSISTANCE SENSOR, FRONT, OUTER > PARKING ASSISTANCE SENSOR, FRONT, OUTER [2021-2022, E400V6] > REMOVAL



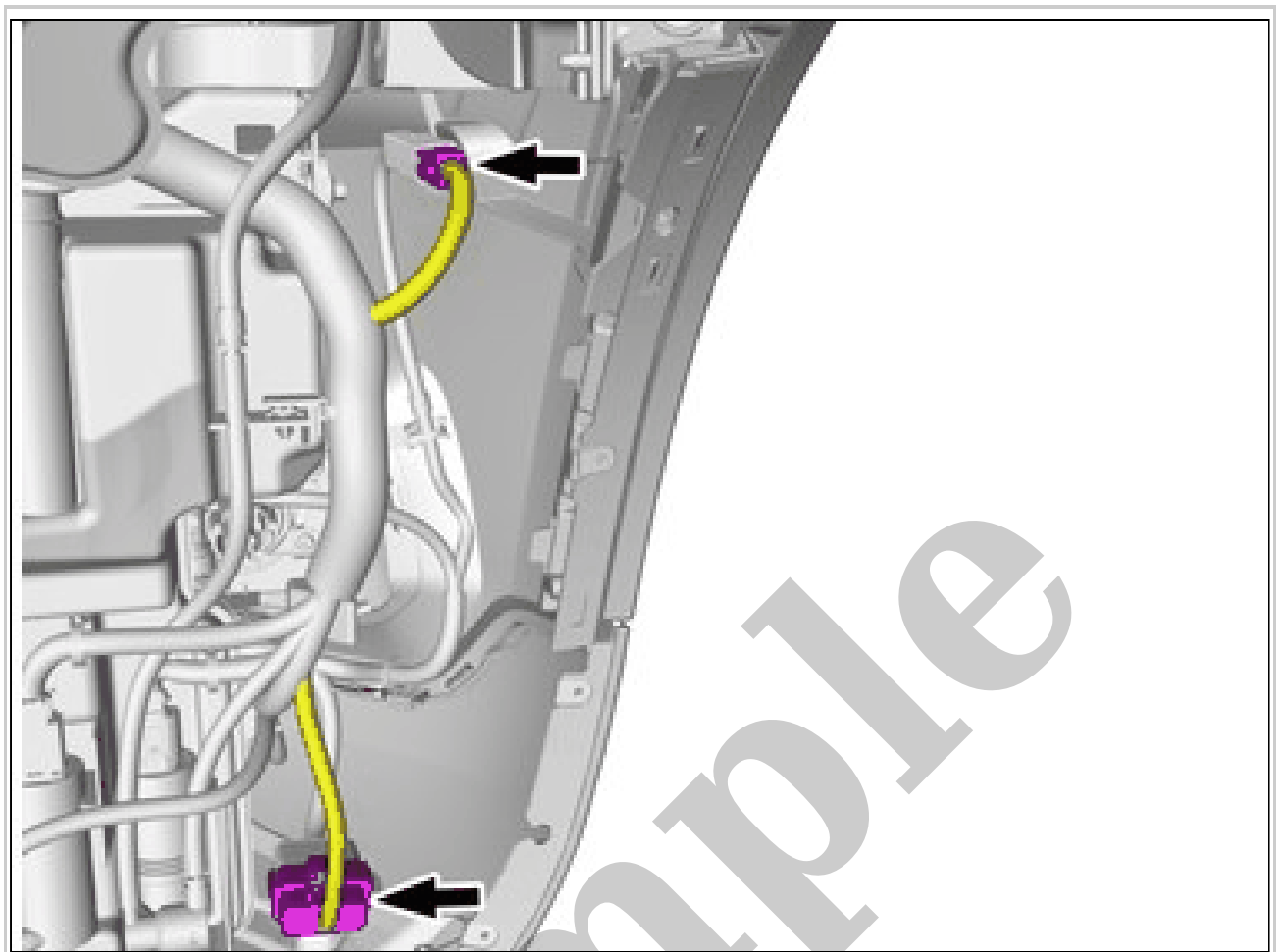
Courtesy of VOLVO CARS CORPORATION

Fold the wing liner aside.



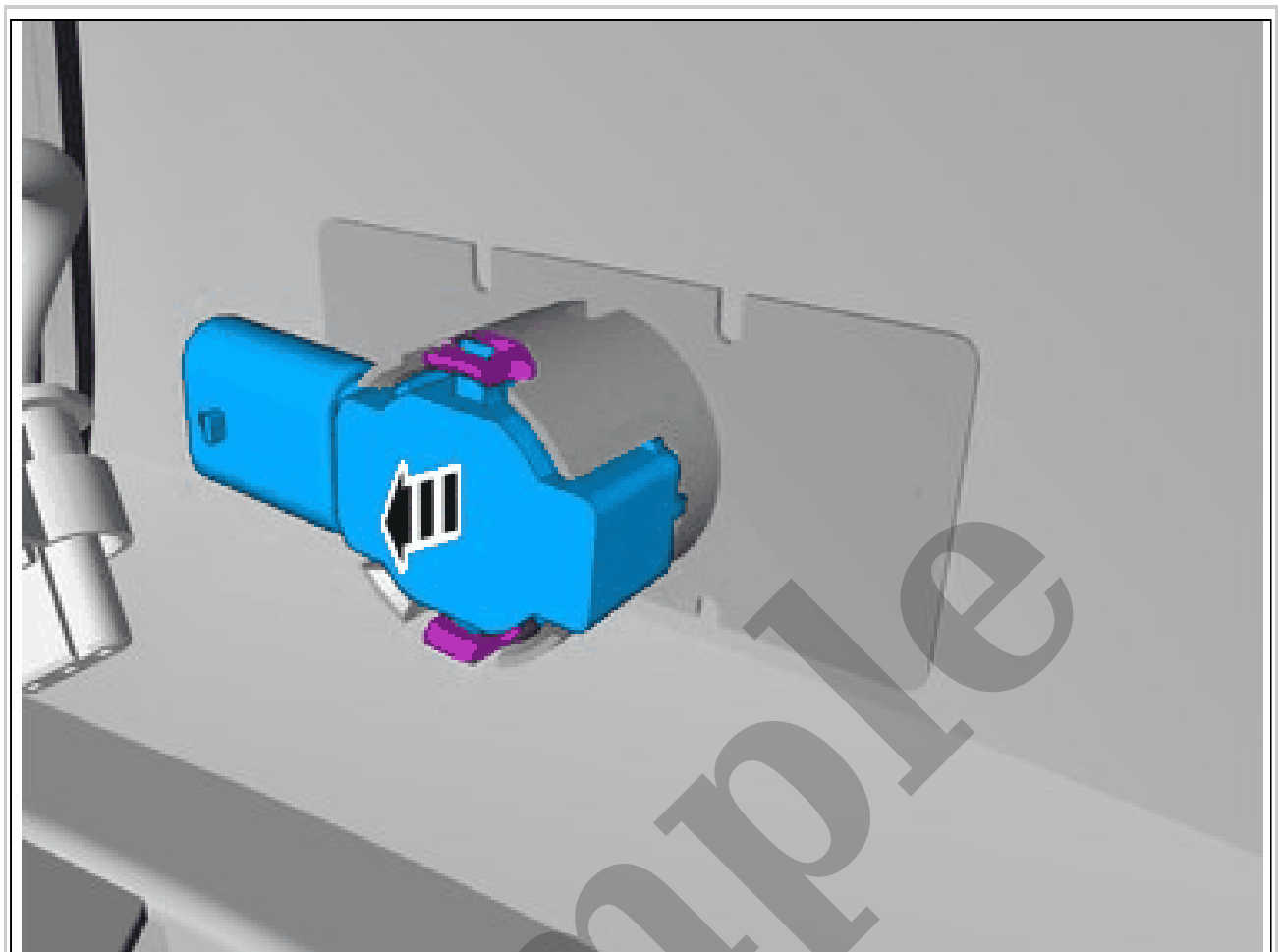
Courtesy of VOLVO CARS CORPORATION

- Remove the screws.
- Loosen the clip.
- Remove the marked part.



Courtesy of VOLVO CARS CORPORATION

Disconnect the connectors.



Courtesy of VOLVO CARS CORPORATION

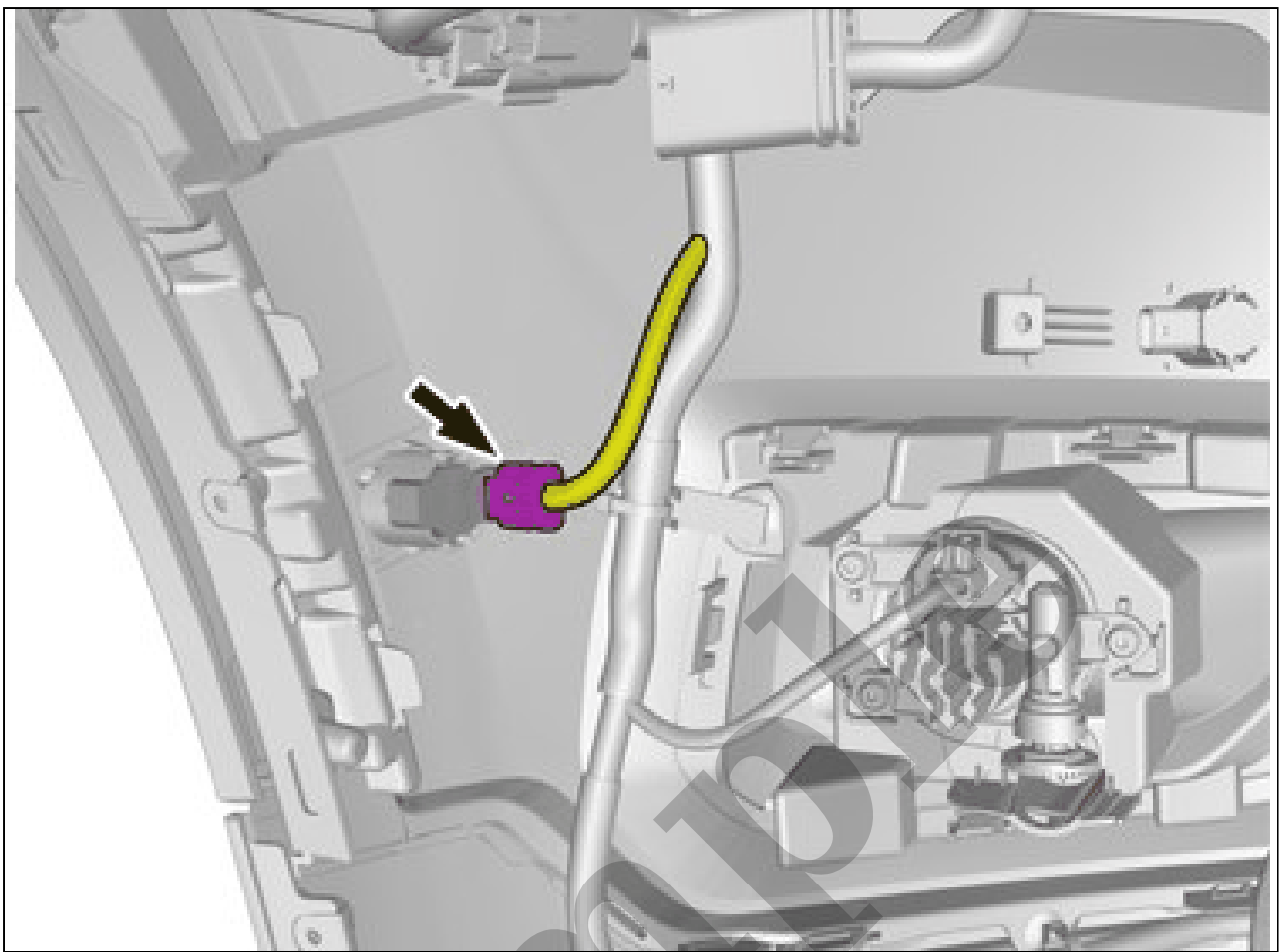
Release the catches.
Remove the marked part.

PARKING ASSISTANCE SENSOR, FRONT, OUTER > PARKING ASSISTANCE SENSOR, FRONT, OUTER [2021-2022, E400V6] > INSTALLATION

NOTE: *The following steps are only necessary when installing a new component.*

Component is to be painted in the same color as the vehicle.
To install, reverse the removal procedure.

PARKING ASSISTANCE SENSOR, FRONT, SIDE > PARKING ASSISTANCE SENSOR, FRONT, SIDE [2018-2021 | 2022, B4204T18 | 2022, B4204T47] > REMOVAL



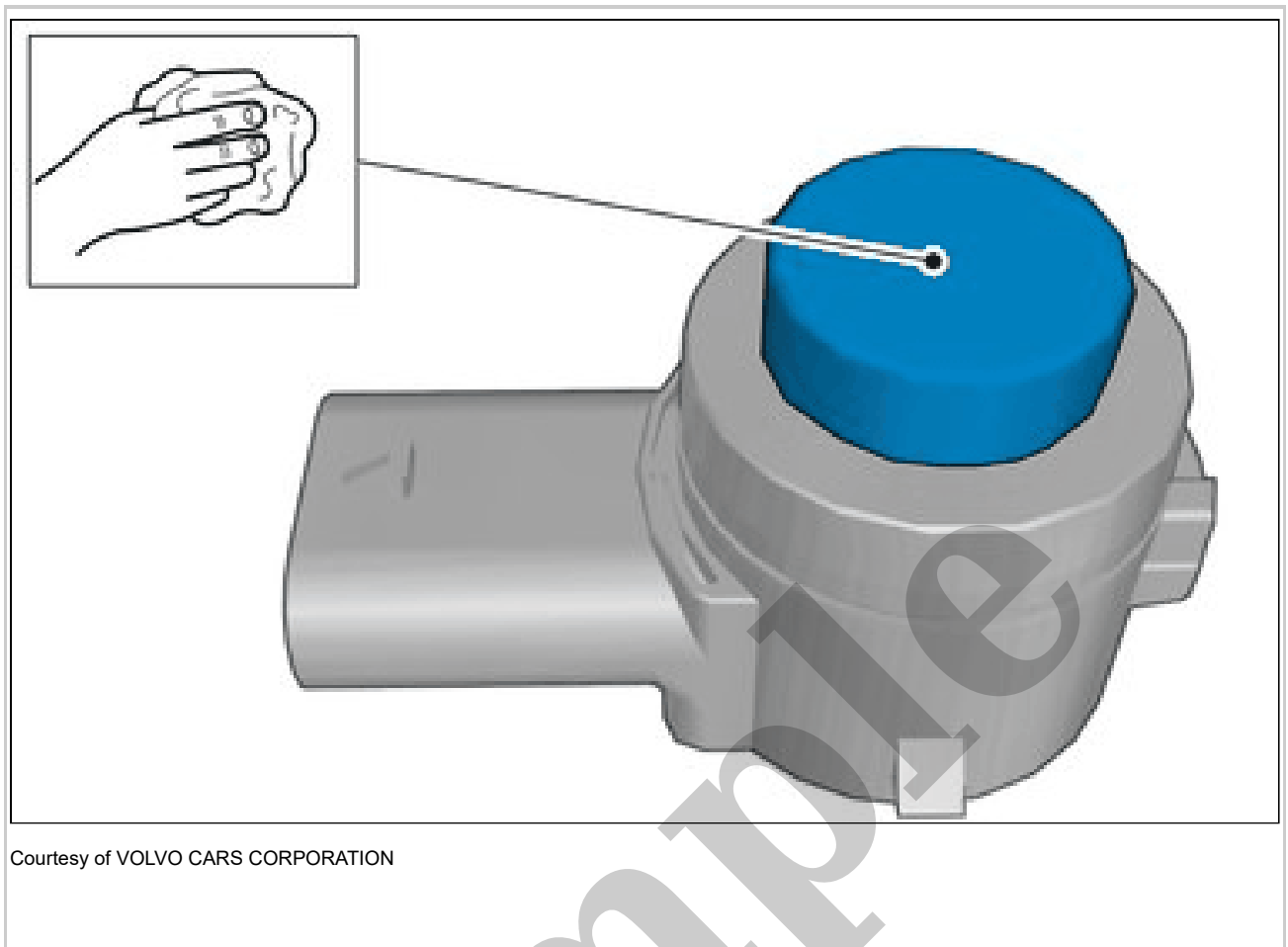
Courtesy of VOLVO CARS CORPORATION

Disconnect the connector.



Courtesy of VOLVO CARS CORPORATION

Sample



Courtesy of VOLVO CARS CORPORATION

Use: Cleaning agent, 1161721



Courtesy of VOLVO CARS CORPORATION

NOTE: *Orientation view*