

# Your Ultimate Source for OEM Repair Manuals

FactoryManuals.net is a great resource for anyone who wants to save money on repairs by doing their own work. The manuals provide detailed instructions and diagrams that make it easy to understand how to fix a vehicle.

## 2010 FORD Tourneo Connect OEM Service and Repair Workshop Manual

[Go to manual page](#)



## Frame and Body Mounting - Electric

<b>502-02 Full Frame and Body Mounting</b>	<b>2022 F-150</b>
<b>Description and Operation</b>	<b>Procedure revision date: 04/23/2022</b>

### Frame and Body Mounting - Electric

The frame consists of 2 steel closed section rails, a front crossmember and mid and rear welded crossmembers.

The frame also contain brackets fore and aft of front wheel and tire assembly on the front frame rails, which are designed to stabilize the tire and wheel assembly in the event of collision damage.

For frame dimensional information, refer to

For additional information, refer to: [Body and Frame](#)

(501-26 Body Repairs - Vehicle Specific Information and Tolerance Checks, Description and Operation).

### Body Mounts

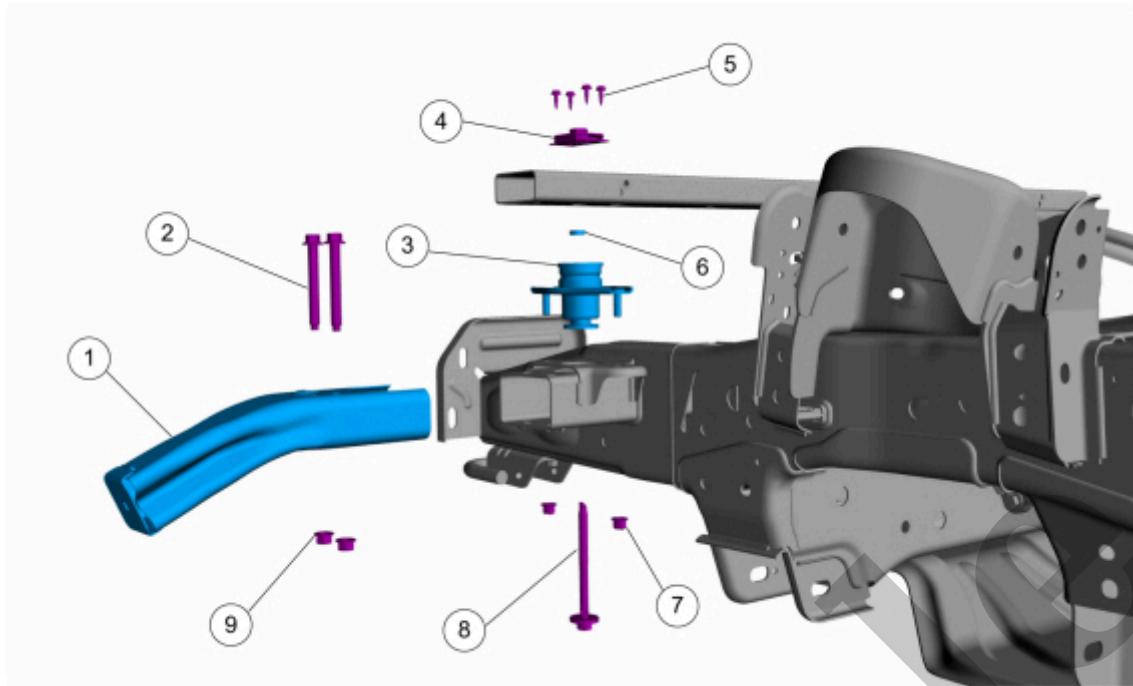
The body support mounts:

- secure the body to the frame.
- cannot be lubricated during body support mount installation

### NOTE

Body fasteners are reusable if the following steps are followed:

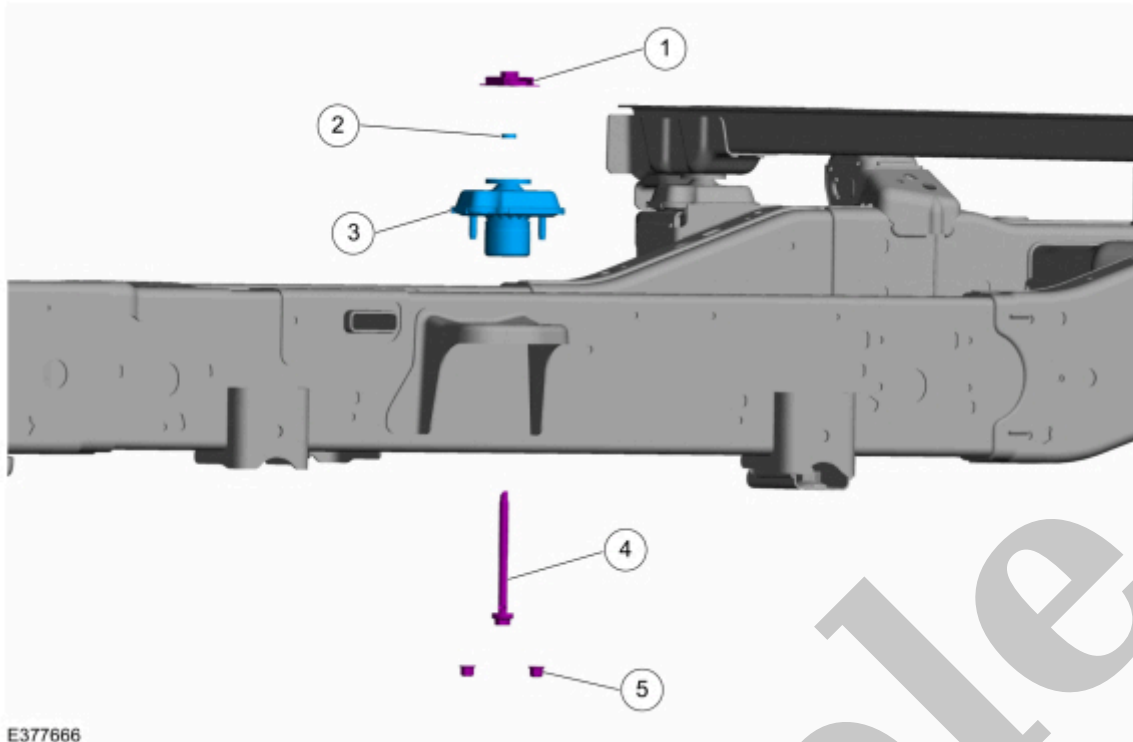
- Body bolt threads must be cleaned of thread sealer by using a wire wheel or wire brush.
- Apply a new treatment of threadlock sealer to the body bolt threads.
- Body retainer cage nuts must be serviced as an assembly.



E377664

Item	Description	Torque
1	Bracket	—
2	Bracket bolt (2 required)	—
3	Upper insulator	—
4	Body retainer cage nut	—
5	Body retainer cage nut rivet (4 required)	—
6	Cap	—
7	Body mount nut (2 required)	63Nm (46 lb-ft)
8	Body mount bolt	103 Nm (76 lb-ft)
9	Bracket nut (2 required)	103 Nm (76 lb-ft)

**Body Mount — No. 1 (LH/RH SuperCrew)**



E377666

Item	Description	Torque
1	Body retainer cage nut	—
2	Cap	—
3	Hydraulic body mount	—
4	Body mount bolt	103 Nm (76 lb-ft)
5	Body mount nut (2 required)	63 Nm (46 lb-ft)

### Body Mount — No. 3, Hydraulic (LH/RH SuperCrew)

#### NOTE

with hydraulic mounts.

## Frame and Body Mounting

<b>502-02 Full Frame and Body Mounting</b>	<b>2022 F-150</b>
<b>Description and Operation</b>	<b>Procedure revision date: 10/2/2020</b>

### Frame and Body Mounting

The frame consists of 2 steel channel rails, a front crossmember, a transmission support crossmember and mid and rear welded crossmembers.

The SuperCrew frames also contain brackets fore and aft of front wheel and tire assembly on the front frame rails, which are designed to stabilize the tire and wheel assembly in the event of collision damage.

For frame dimensional information, refer to

For additional information, refer to: [Body and Frame](#)

(501-26 Body Repairs - Vehicle Specific Information and Tolerance Checks, Description and Operation).

### Body Mounts

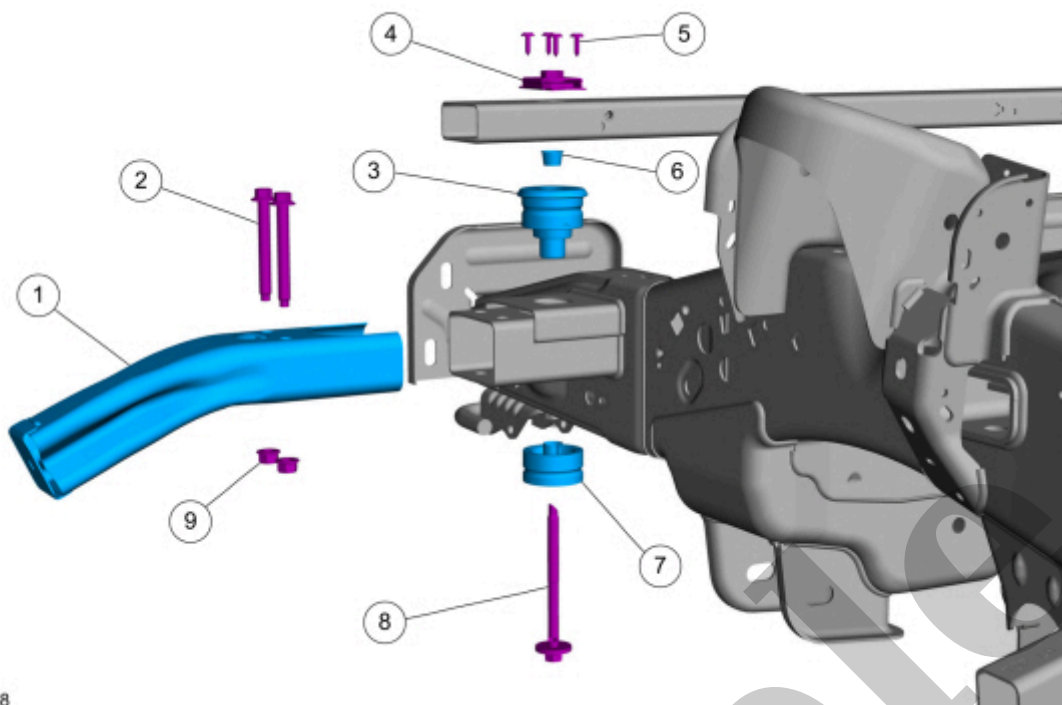
The body support mounts:

- secure the body to the frame.
- cannot be lubricated during body support mount installation

### NOTE

Body fasteners are reusable if the following steps are followed:

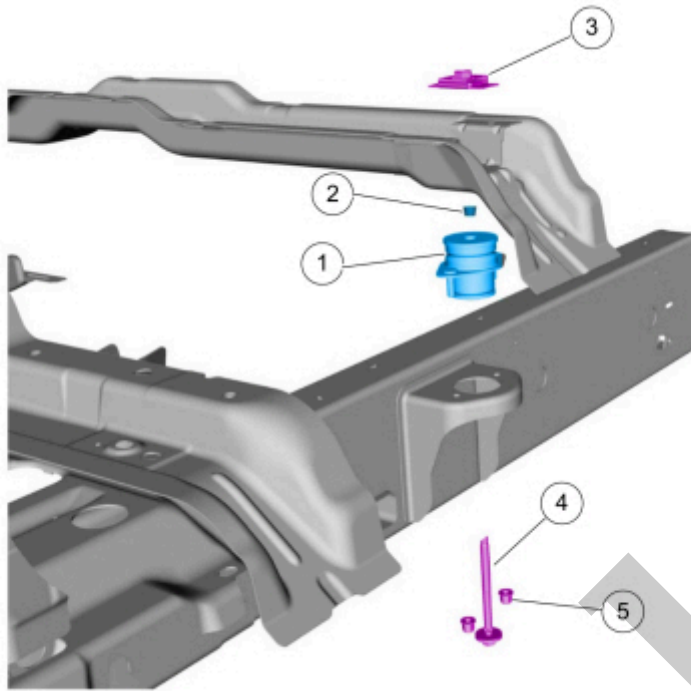
- Body bolt threads must be cleaned of thread sealer by using a wire wheel or wire brush.
- Apply a new treatment of threadlock sealer to the body bolt threads.
- Body retainer cage nuts must be serviced as an assembly.



E338518

Item	Description	Torque
1	Bracket	—
2	Bracket bolt (2 required)	—
3	Upper insulator	—
4	Body retainer cage nut	—
5	Body retainer cage nut rivet (4 required)	—
6	Cap	—
7	Lower insulator	—
8	Body mount bolt	80 Nm (59 lb-ft)
9	Bracket nut (2 required)	103 Nm (76 lb-ft)

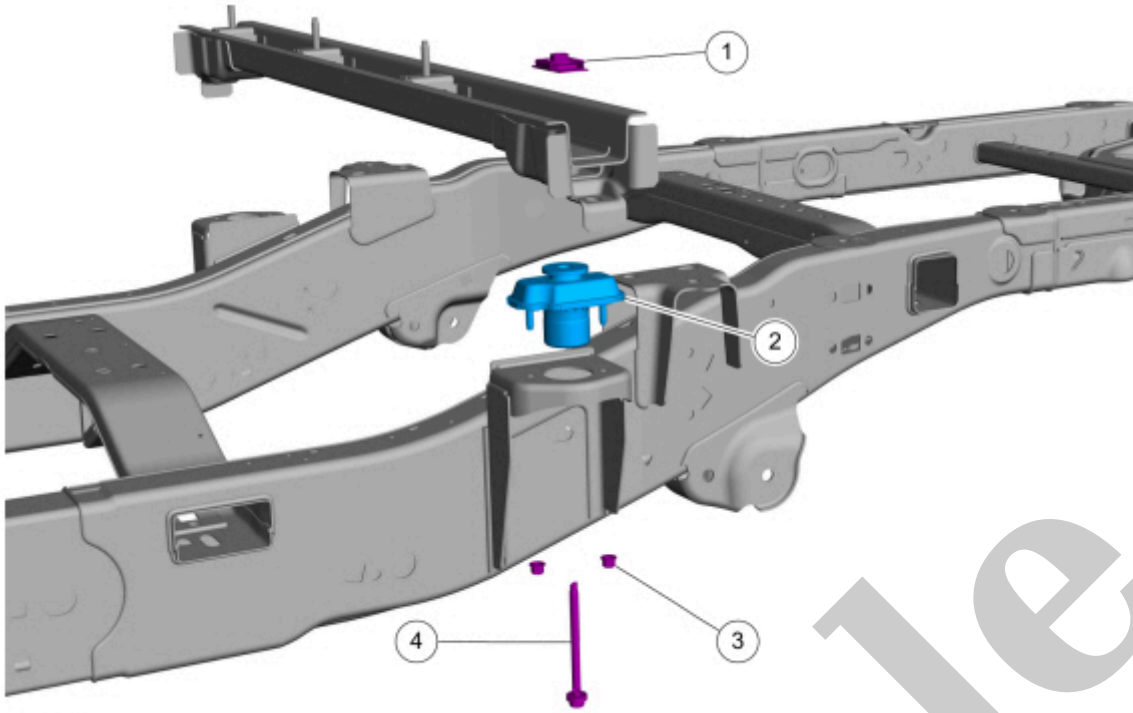
**Body Mount — No. 1 (LH/RH All Cabs)**



E196492

Item	Description	Torque
1	Body mount	—
2	Cap	—
3	Body retainer cage nut	—
4	Body mount bolt	103 Nm (76 lb-ft)
5	Body mount nut (2 required)	62 Nm (46 lb-ft)

**Body Mount — No. 2, (LH/RH Regular Cab)**

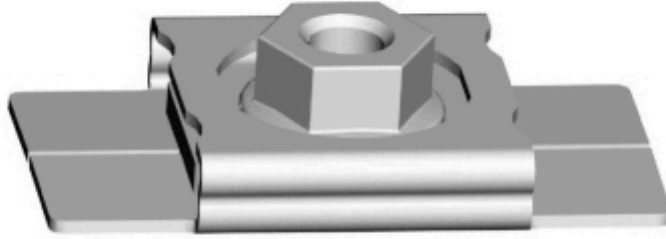


E338520

Item	Description	Torque
1	Body retainer cage nut	—
2	Hydraulic body mount	—
3	Body mount bolt (2 required)	62 Nm (46 lb-ft)
4	Body mount bolt	103 Nm (76 lb-ft)

Copyright © Ford Motor Company





E283591

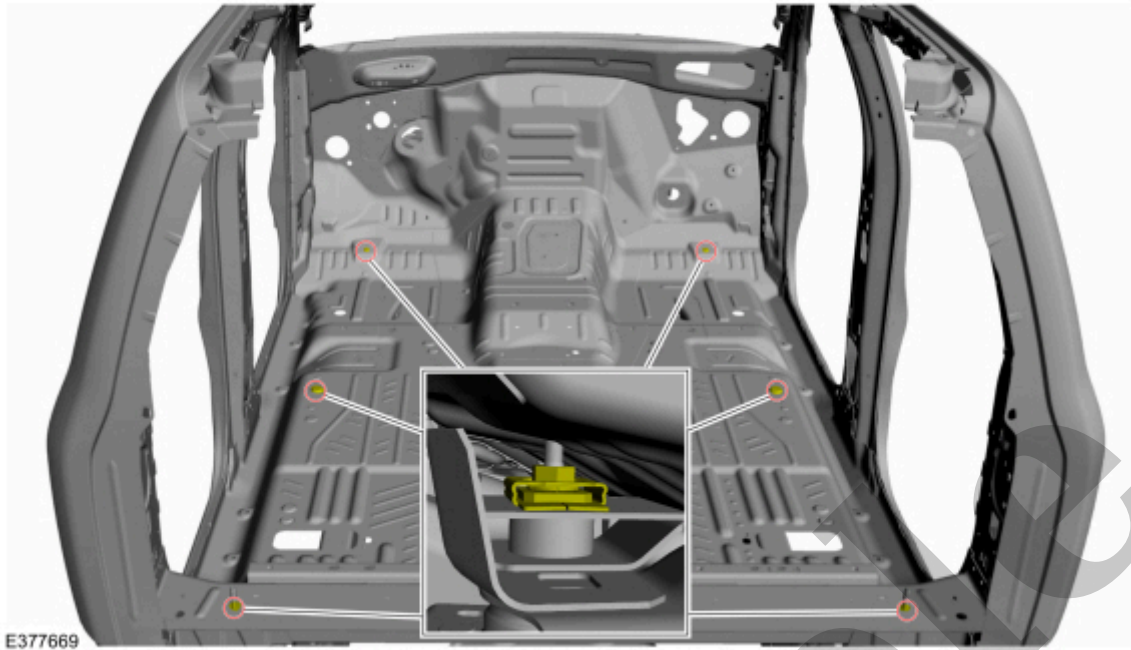
[Click here to learn about symbols, color coding, and icons used in this manual.](#)

## 2. NOTE

Front End Sheet Metal (FESM) body mount bolt.

Place a box wrench or equivalent on the captured nut. Remove and discard the body mount bolt.

**Torque** : 59 lb.ft (80 Nm)



[Click here to learn about symbols, color coding, and icons used in this manual.](#)

#### 4. NOTE

##### **For removal of number 1 and 2 body mount bolts.**

Remove the seat(s) as required and position aside the carpet and wire harness.

Refer to: [Front Seat](#)(501-10A Front Seats, Removal and Installation).

5. Remove the B-pillar trim as required and position aside the carpet and wire harness.

Refer to: [B-Pillar Trim Panel - SuperCrew](#)(501-05 Interior Trim and Ornamentation, Removal and Installation).

6. Remove the lower trim kick panel on the affected side.