

Your Ultimate Source for OEM Repair Manuals

FactoryManuals.net is a great resource for anyone who wants to save money on repairs by doing their own work. The manuals provide detailed instructions and diagrams that make it easy to understand how to fix a vehicle.

2010 CHEVROLET Tahoe OEM Service and Repair Workshop Manual

[Go to manual page](#)

YOUR CURRENT VEHICLE

DTC B3604 or B3605

DTC B3604 or B3605 (Z75)

Diagnostic Instructions

- Perform the [Diagnostic System Check - Vehicle](#) prior to using this diagnostic procedure.
- Review [Strategy Based Diagnosis](#) for an overview of the diagnostic approach.
- [Diagnostic Procedure Instructions](#) provides an overview of each diagnostic category.

DTC Descriptors

DTC B3604 59	Adjustable Pedal Forward Switch Circuit Protection Time-Out
DTC B3605 59	Adjustable Pedal Rearward Switch Circuit Protection Time-Out

Diagnostic Fault Information

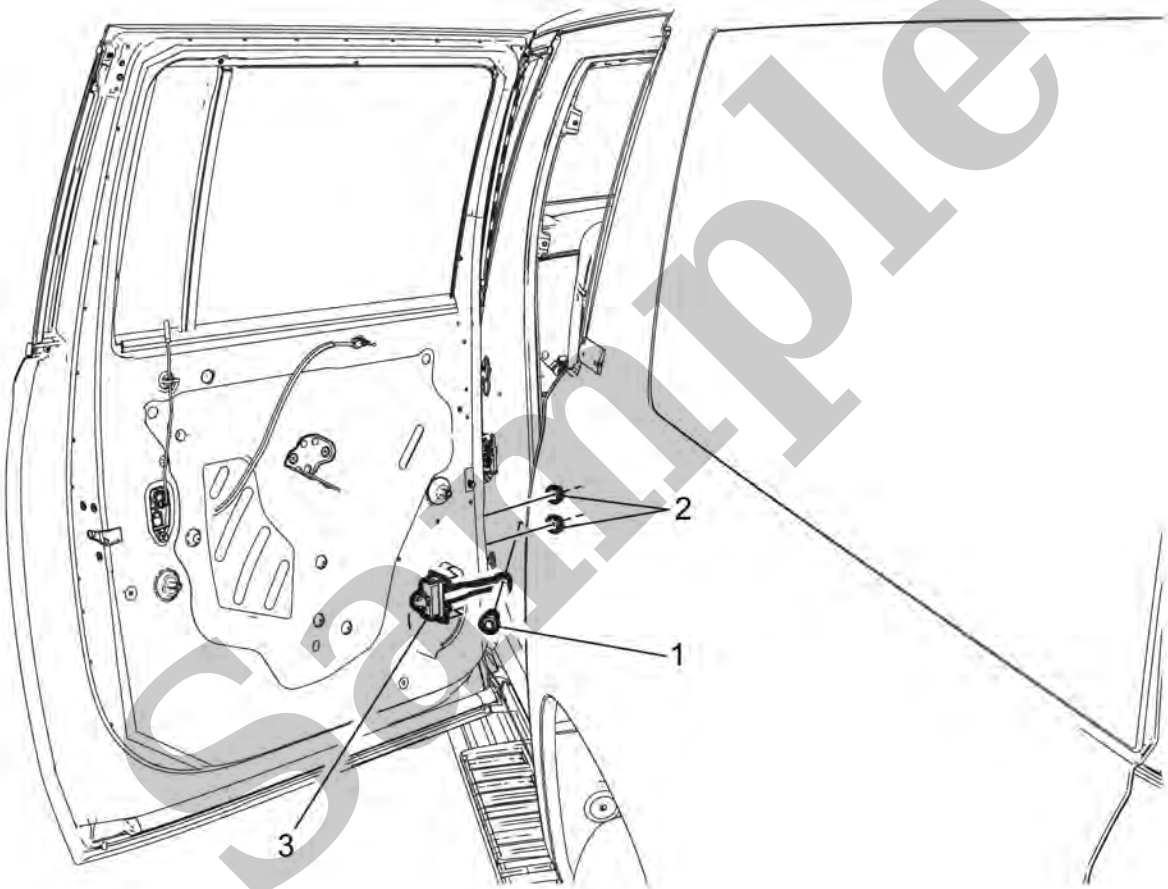
Circuit	Short to Ground	Open/High Resistance	Short to Voltage	Signal Performance
Adjustable Pedals Forward Switch Signal	B3604 59	1	—	—
Adjustable Pedals Rearward Switch Signal	B3605 59	1	—	—
Ground	—	1	—	—

1. Adjustable Pedals Malfunction



Rear Side Door Check Link Replacement

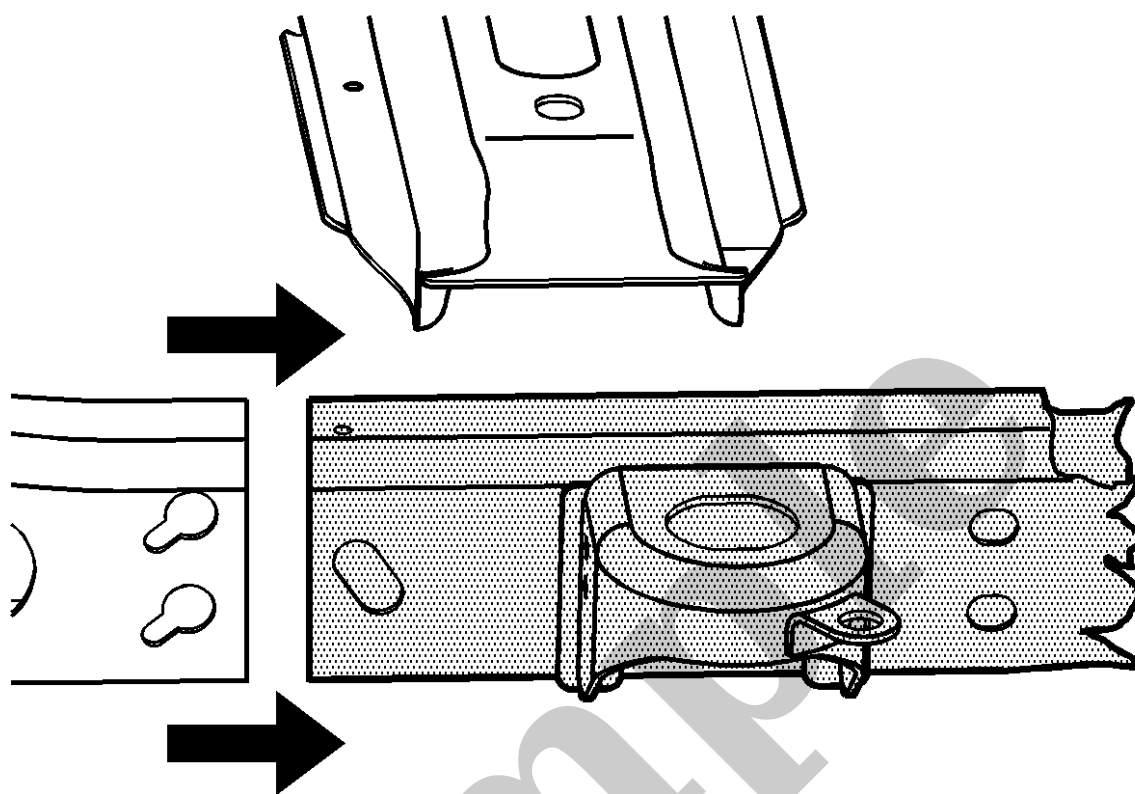
Rear Side Door Check Link Replacement (Chevrolet, GMC with Long Wheelbase)



Rear Side Door Check Link Replacement

Callout	Component Name
<p>Preliminary Procedure</p> <p>1. Open the door to the full open position.</p> <p>2. Place the window in the full up position.</p> <p>3. Remove rear side door speaker. Refer to Radio Rear Side Door Speaker Replacement.</p>	





12.

Remove the damaged frame section.

Installation Procedure

YOUR CURRENT VEHICLE

Body Side Rear Window Replacement

Body Side Rear Window Replacement (Long Wheelbase)

Special Tools

- **BO 39032** *Stationary Glass Removal Tool*
- Use a urethane adhesive systems which meet GM Specification GM 3651G

For equivalent regional tools, refer to [Special Tools](#).

Removal Procedure

1. **WARNING**

Warning

Refer to [Glass and Sheet Metal Handling Warning](#).

WARNING

Warning

Refer to [Cracked Window Warning](#).

NOTE

Note

Before cutting out a stationary window, apply a double layer of masking tape around the perimeter of the painted surfaces and the interior trim.

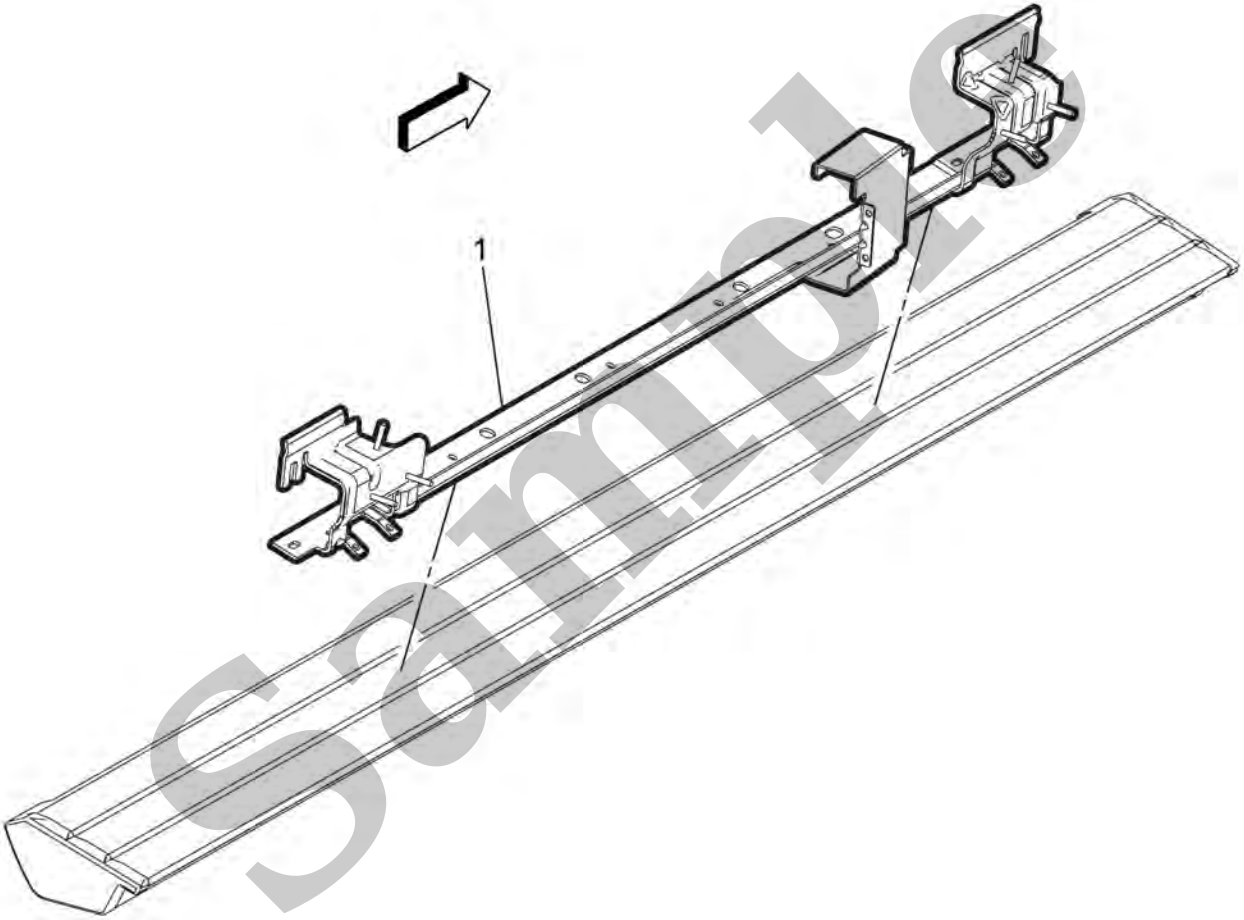
Open the liftgate.



YOUR CURRENT VEHICLE

Assist Step Center Bracket Replacement

Assist Step Center Bracket Replacement (Retractable Assist Step)



Assist Step Center Bracket Replacement

Callout	Component Name
Preliminary Procedures 1. Deploy and support the power assist step. 2. Remove the assist step assembly. Refer to Assist Step Replacement .	
1	Assist Step Center Bracket

Callout	Component Name
2. Squeeze the sides of the instrument panel compartment assembly allowing the compartment to open past the stops.	
1	<div>Instrument Panel Compartment Bolt (Qty: 6)</div> <div><div>CAUTION</div><div><div>Caution</div><div>Refer to Fastener Caution.</div></div></div> <div><div>Tighten</div><div>2.5 N·m (22 lb in)</div></div>
2	Instrument Panel Compartment Access Hole Cover

Ambient Light Sensor Malfunction

1. Ignition OFF, scan tool disconnected, all doors closed, all accessories OFF, open and close drivers door, disconnect the harness connector at the B10B Ambient Light/Sunload Sensor. It may take up to 10 min for all vehicle systems to power down.
2. Test for less than 5 Ω between the low reference circuit terminal 6 and ground.
 - **If 5 Ω or greater**
 1. Ignition OFF, disconnect the X2 harness connector at the K33 HVAC Control Module.
 2. Test for less than 2 Ω in the low reference circuit end to end.
 - If 2 Ω or greater, repair the open/high resistance in the circuit.
 - If less than 2 Ω , replace the K33 HVAC Control Module.
 - **If less than 5 Ω**
3. Ignition ON.
4. Verify the scan tool Ambient Light Sensor parameter is greater than 4.65 V.
 - **If 4.65 V or less**
 1. Ignition OFF, disconnect the X2 harness connector at the K9 Body Control Module.
 2. Test for infinite resistance between the signal circuit terminal 5 and ground.
 - If less than infinite resistance, repair the short to ground on the circuit.
 - If infinite resistance, replace the K9 Body Control Module.
 - **If greater than 4.65 V**
5. Install a 3 A fused jumper wire between the signal circuit terminal 5 and the low reference circuit terminal 6.
6. Verify the scan tool Ambient Light Sensor parameter is less than 0.196 V.
 - **If 0.196 V or greater**
 1. Ignition OFF, disconnect the X2 harness connector at the K9 Body Control Module, ignition ON.
 2. Test for less than 1 V between the signal circuit terminal 5 and ground.
 - If 1 V or greater, repair the short to voltage on the circuit.
 - If less than 1 V

Circuit	Short to Ground	Open/High Resistance	Short to Voltage	Signal Performance
1. Trailer Lamps Malfunction				

Circuit/System Description

The trailer lighting control module receives a serial data message from the body control module (BCM) indicating that the vehicle left or right turn signal lamp has been activated. The trailer lighting control module responds by applying a pulsating voltage to the appropriate trailer turn signal lamp through their respective control circuit illuminating the desired trailer turn signal lamp.

Conditions for Running the DTC

- Battery voltage must be between 9–16 V.
- Turn signal ACTIVE.

Conditions for Setting the DTC

DTC B3950 02

The trailer lighting control module detects a short to ground in the left trailer turn signal lamp control circuit.

DTC B3950 04

The trailer lighting control module detects an open/high resistance in the left trailer turn signal lamp control circuit.

DTC B3951 02

The trailer lighting control module detects a short to ground in the right trailer turn signal lamp control circuit.

DTC B3951 04

The trailer lighting control module detects an open/high resistance in the right trailer turn signal lamp control circuit.

Actions Taken When the DTC Sets

The appropriate trailer turn signal lamp will be inoperative.