

Your Ultimate Source for OEM Repair Manuals

FactoryManuals.net is a great resource for anyone who wants to save money on repairs by doing their own work. The manuals provide detailed instructions and diagrams that make it easy to understand how to fix a vehicle.

2010 CHEVROLET Matiz / Spark (M300) OEM Service and Repair Workshop Manual

[Go to manual page](#)

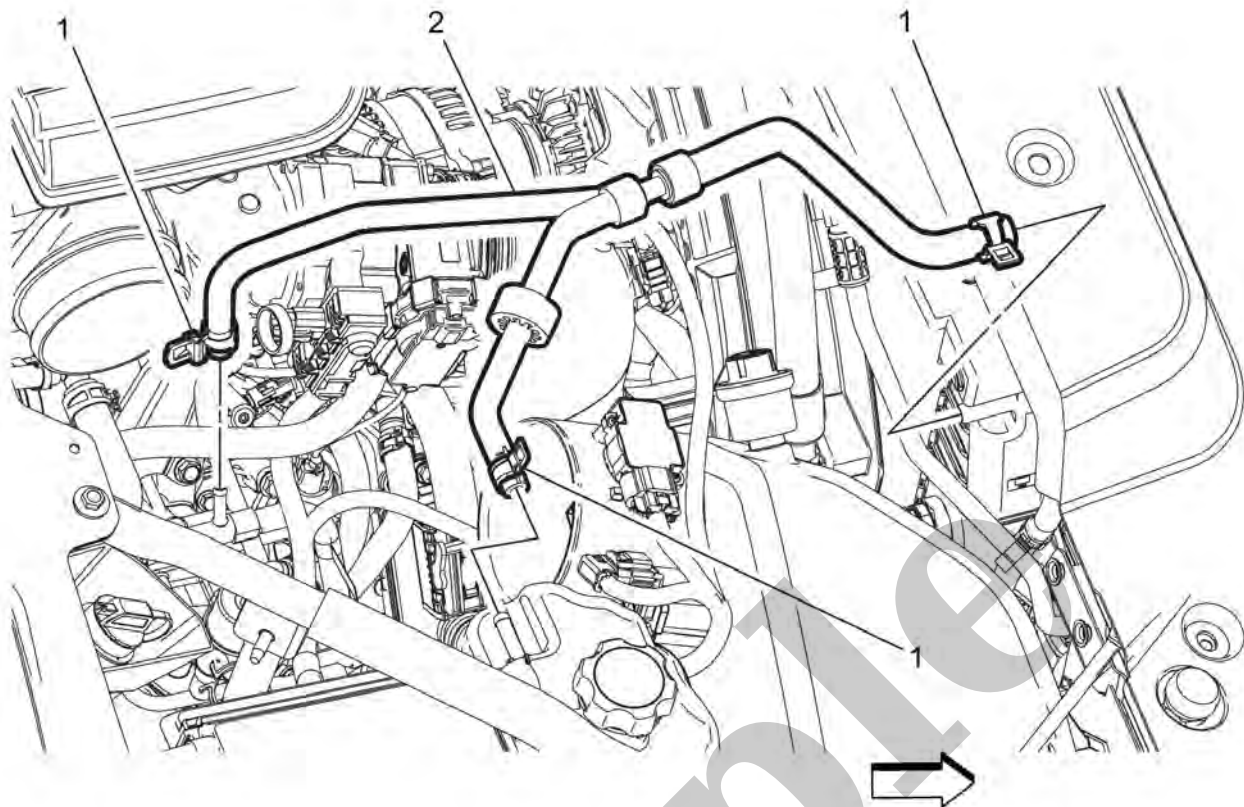
Circuit/System Verification

1. Ignition ON
2. Verify the scan tool In Park Switch Status parameter changes from Off to On while moving the transmission shift selector from the P (park) position.
 - **If the parameter does not change**
Refer to [Ignition Can/Cannot Be Turned Off with Transmission in Any Gear](#)
 - **If the parameter changes**
3. Verify the scan tool Adjustable Pedal Control Switch parameter changes from Inactive to Active while pressing the adjustable pedal switch in both directions.
 - **If the parameter does not change**
Refer to Circuit/System Testing — Adjustable Pedal Control Switch Malfunction.
 - **If the parameter changes**
4. Verify the brake and accelerator pedals move while commanding the Adjustable Pedals Forward/Rearward with a scan tool.
 - **If the pedals do not move**
Refer to Circuit/System Testing — Adjustable Pedal Motor Circuit Malfunction.
 - **If the pedals move in the commanded direction**
5. Verify the scan tool Adjustable Pedals Horizontal Position parameter is between 0.45–4.55 V and changes while pressing the adjustable pedal switch in both directions.
 - **If not between 0.45–4.55 V or does not change**
Refer to Circuit/System Testing.
 - **If between 0.45–4.55 V and changes**
6. All OK.

Circuit/System Testing

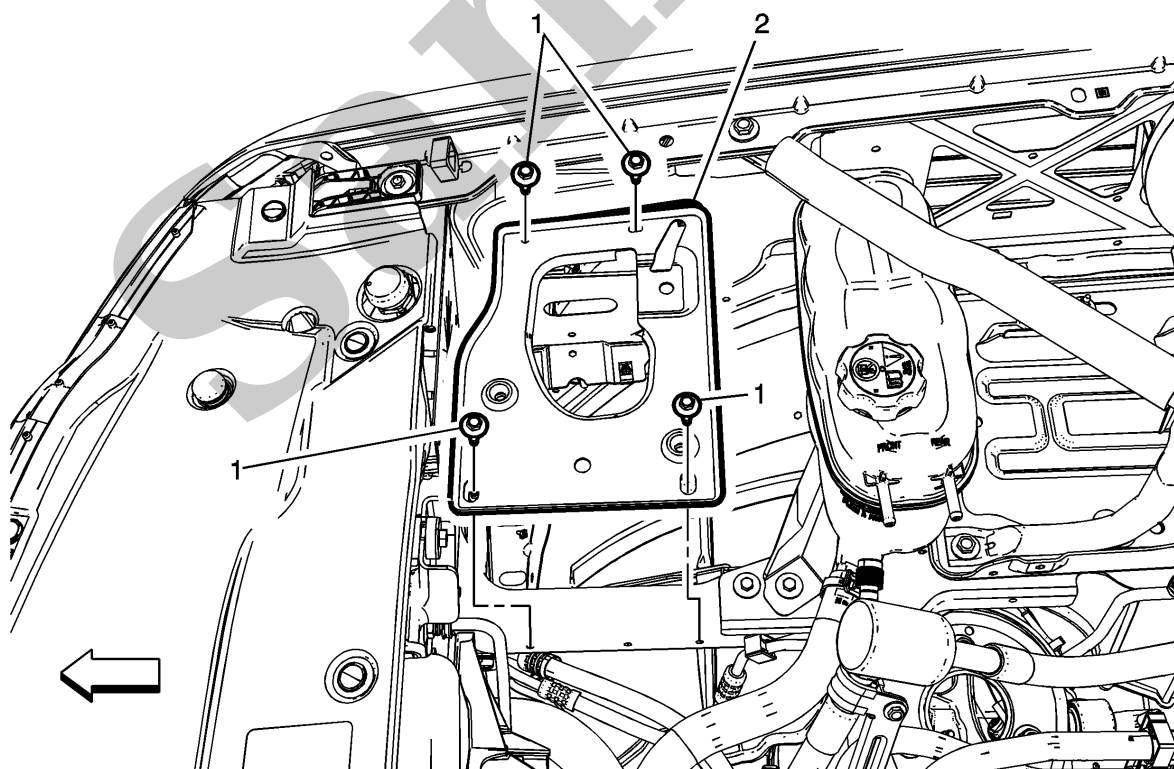
Adjustable Pedal Control Switch Malfunction

1. Ignition OFF and all vehicle systems OFF, disconnect the harness connector at the S48C Multifunction Switch 1-Instrument Panel. It may take up to 2 minutes for all vehicle systems to power down.



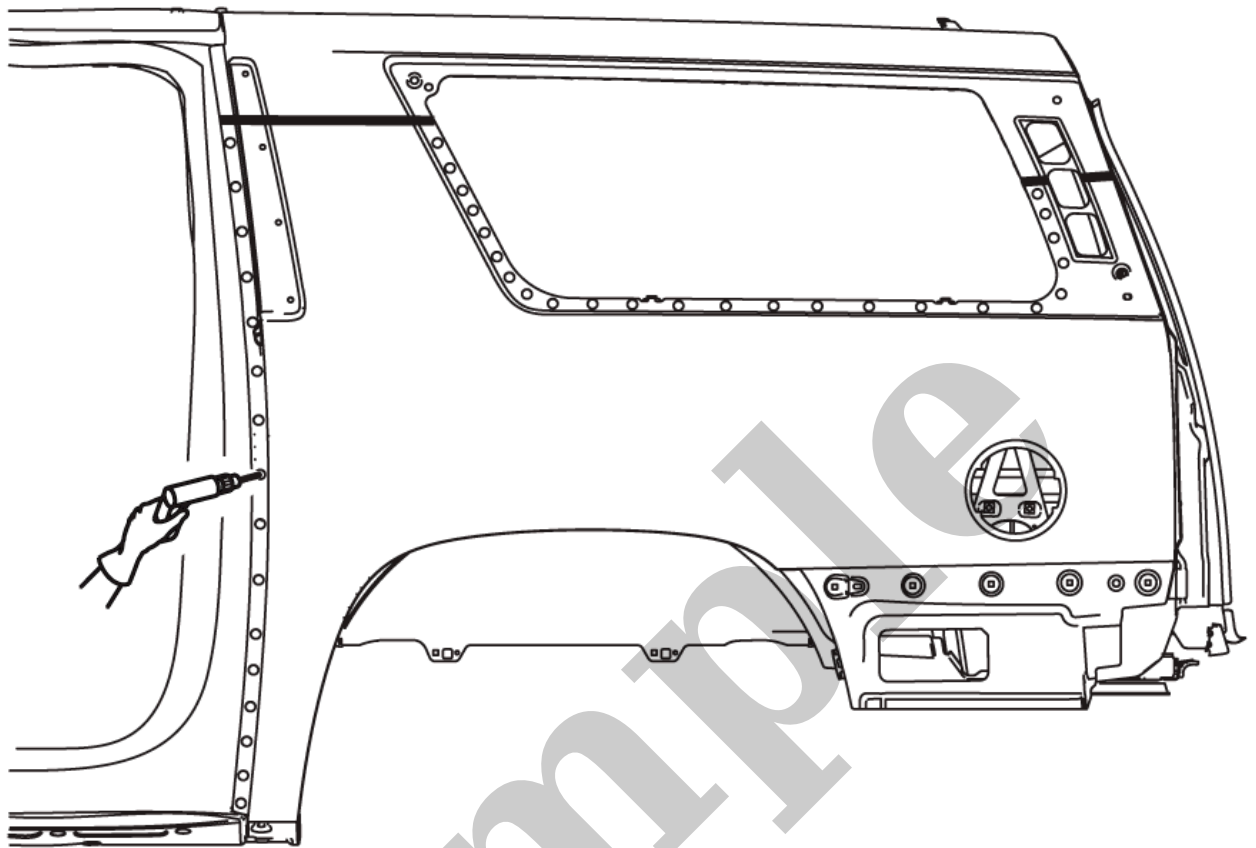
19.

Radiator Surge Tank Inlet Hose(2) »Install— [Radiator Surge Tank Inlet Hose Replacement](#)



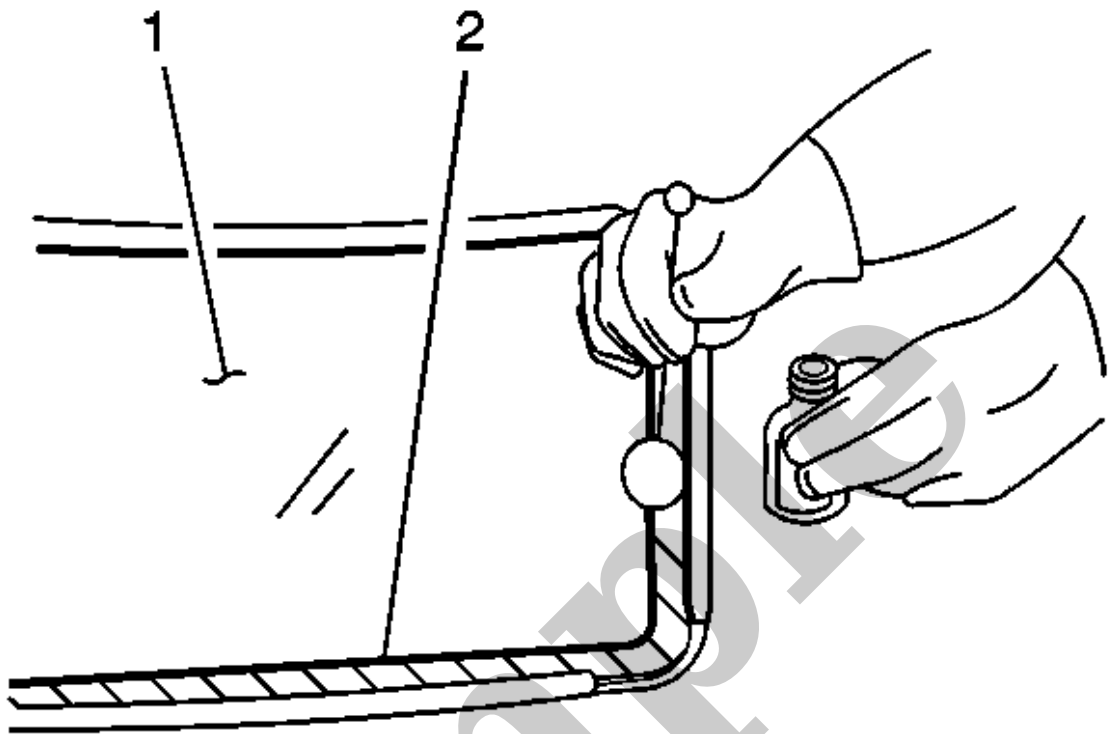
20.

Air Cleaner Bracket(2) »Install— [Air Cleaner Bracket Replacement](#)



6.

Locate and drill out all factory welds. Note the number and location of the welds for installation of the service part.



15.

NOTE

Note

The glass primer black #2 is effective up to 8 hours after applying it to the glass. The primed surface of the glass must be kept clean.

Shake the glass primer black #2 for at least 1 minute.

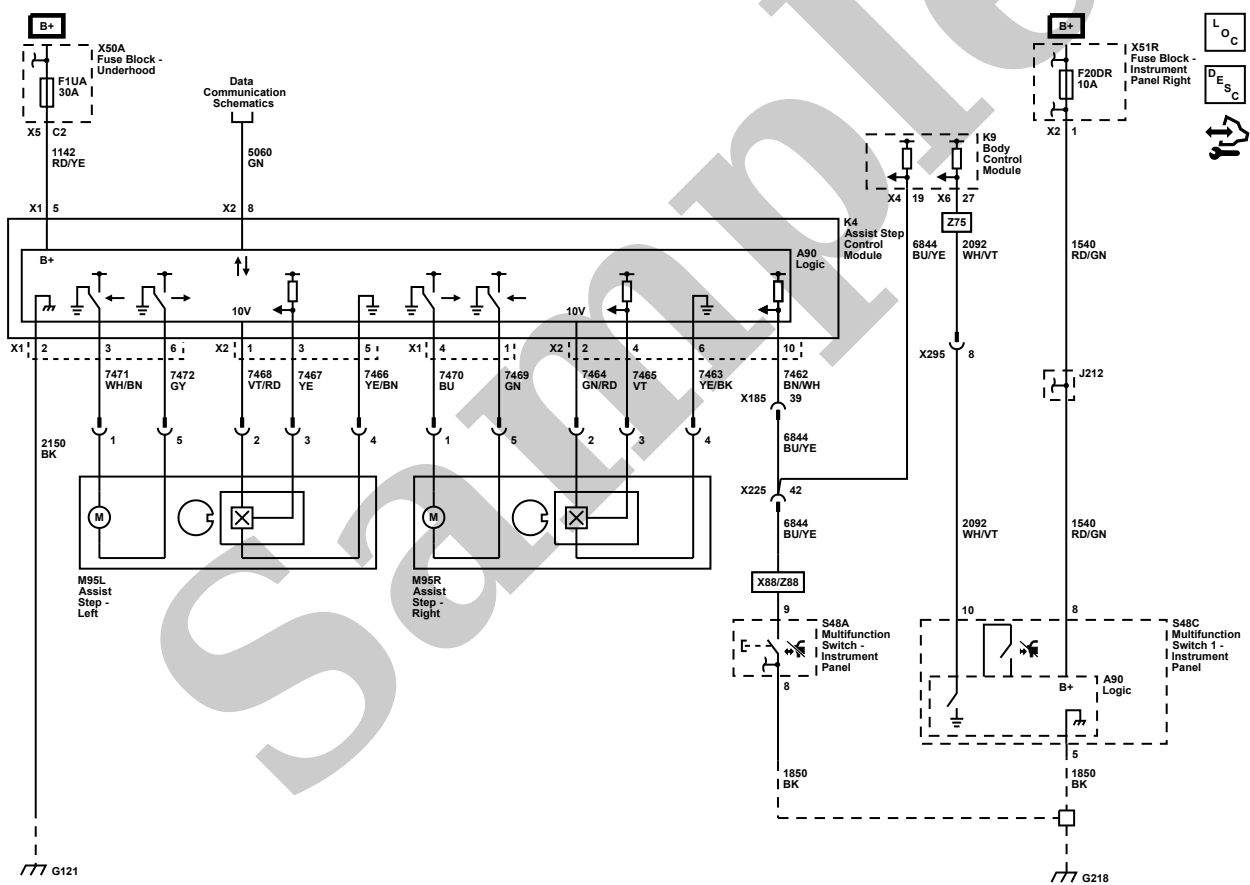
16. Use a new dauber in order to apply the glass primer black #2 to the same areas (2) that glass prep clear #1 was applied.
17. Allow the glass primer to dry for approximately 10 minutes.

YOUR CURRENT VEHICLE

Step/Running Board Schematics

Step/Running Board Schematics

Step/Running Board



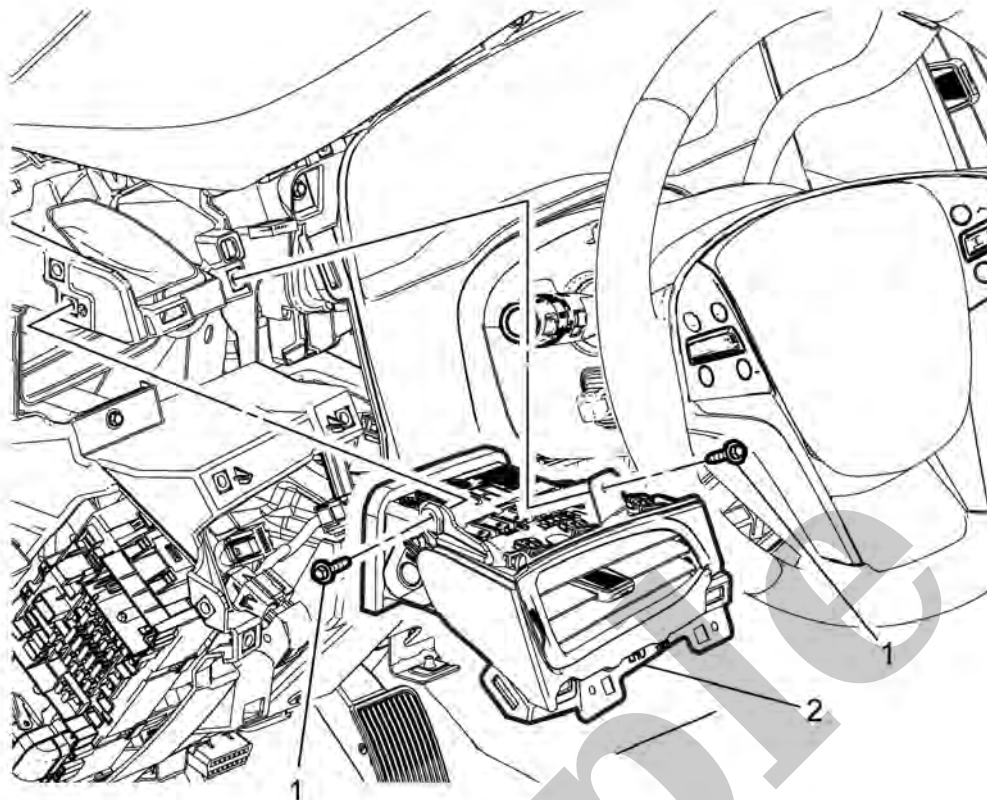
5060 Low Speed GMLAN Serial Data

5060_GN 5060 GN

1142 Battery Positive Voltage

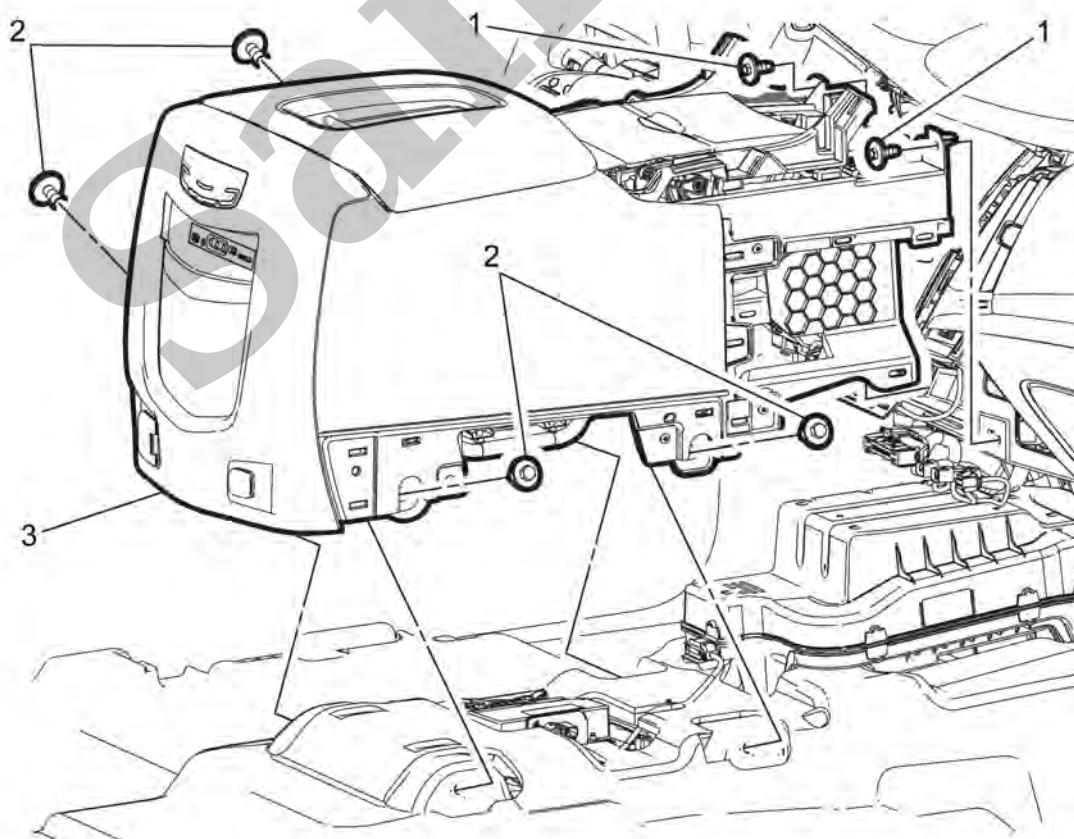
1142_RD/YE 1142 RD/YE

CAV_C2 C2



23.

Install the left instrument panel outer air outlet (2). Refer to [Instrument Panel Outer Air Outlet Replacement - Left Side](#).



24.

- If less than $2\ \Omega$, replace the K9 Body Control Module.

- **If Active**

7. Verify the scan tool Park Lamps Switch parameter is Inactive.

- **If not Inactive**

1. Ignition OFF, disconnect the X1 harness connector at the K9 Body Control Module.
2. Test for infinite resistance between the signal circuit terminal 5 and ground.
 - If less than infinite resistance, repair the short to ground on the circuit.
 - If infinite resistance, replace the K9 Body Control Module.

- **If Inactive**

8. Install a 3 A fused jumper wire between the signal circuit terminal 5 and ground.

9. Verify the scan tool Park Lamps Switch parameter is Active.

- **If not Active**

1. Ignition OFF, disconnect the X1 harness connector at the K9 Body Control Module, ignition ON.
2. Test for less than 1 V between the signal circuit terminal 5 and ground.
 - If 1 V or greater, repair the short to voltage on the circuit.
 - If less than 1 V
3. Test for less than $2\ \Omega$ in the signal circuit end to end.
 - If $2\ \Omega$ or greater, repair the open/high resistance in the circuit.
 - If less than $2\ \Omega$, replace the K9 Body Control Module.

- **If Active**

10. Verify the scan tool Headlamps On Switch parameter is Inactive.

- **If not Inactive**

1. Ignition OFF, disconnect the X1 harness connector at the K9 Body Control Module.
2. Test for infinite resistance between the signal circuit terminal 1 and ground.
 - If less than infinite resistance, repair the short to ground on the circuit.
 - If infinite resistance, replace the K9 Body Control Module.

- **If Inactive**

1. Ignition OFF, disconnect the X5 harness connector at the K9 Body Control Module, ignition ON.

2. Test for less than 1 V between the control circuit terminal and ground.

- If 1 V or greater, repair the short to voltage on the circuit.
- If less than 1 V, replace the K9 Body Control Module.

◦ **If the test lamp turns ON and OFF**

5. Test or replace the appropriate turn signal lamp – left.

DTC B3949

1. Ignition OFF, exterior lamps OFF, All doors closed, open and close drivers door, disconnect the appropriate component listed below. It may take up to 2 min for all vehicle systems to power down.

- A9B Outside Rearview Mirror – Passenger (DR4)
- E4RF Turn Signal Lamp – Right Front (Z75/X88)
- E13RA Headlamp Assembly – Right
- A17P Outside Rearview Mirror Glass – Passenger (DL3)

2. Test for less than 15 Ω between the appropriate ground circuit terminal listed below and ground.

- A9B Outside Rearview Mirror – Passenger terminal 5 (DR4)
- E4RF Turn Signal Lamp – Right Front terminal 2 (Z75/X88)
- E13RA Headlamp Assembly – Right terminals 1 and 4
- A17P Outside Rearview Mirror Glass – Passenger terminal 2 (DL3)

◦ **If 15 Ω or greater**

1. Ignition OFF.

2. Test for less than 2 Ω in the ground circuit end to end.

- If 2 Ω or greater, repair the open/high resistance in the circuit.
- If less than 2 Ω , repair the open/high resistance in the ground connection.

◦ **If less than 15 Ω**

3. Connect a test lamp between the appropriate control circuit terminal listed below and ground, ignition ON.

- A9B Outside Rearview Mirror – Passenger terminal 13 (DR4)