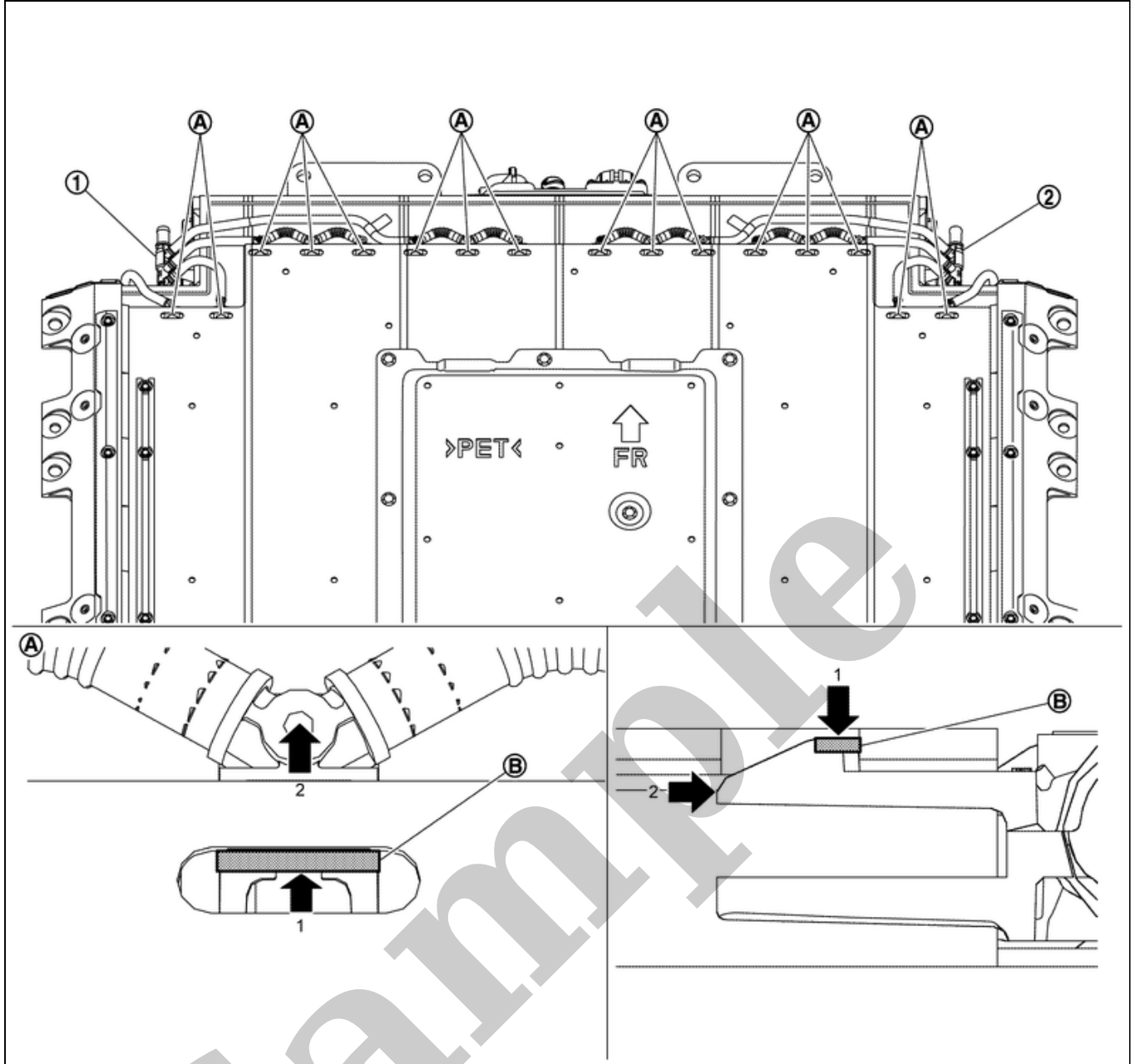


Your Ultimate Source for OEM Repair Manuals

FactoryManuals.net is a great resource for anyone who wants to save money on repairs by doing their own work. The manuals provide detailed instructions and diagrams that make it easy to understand how to fix a vehicle.

2009 NISSAN Patrol LWB OEM Service and Repair Workshop Manual

[Go to manual page](#)

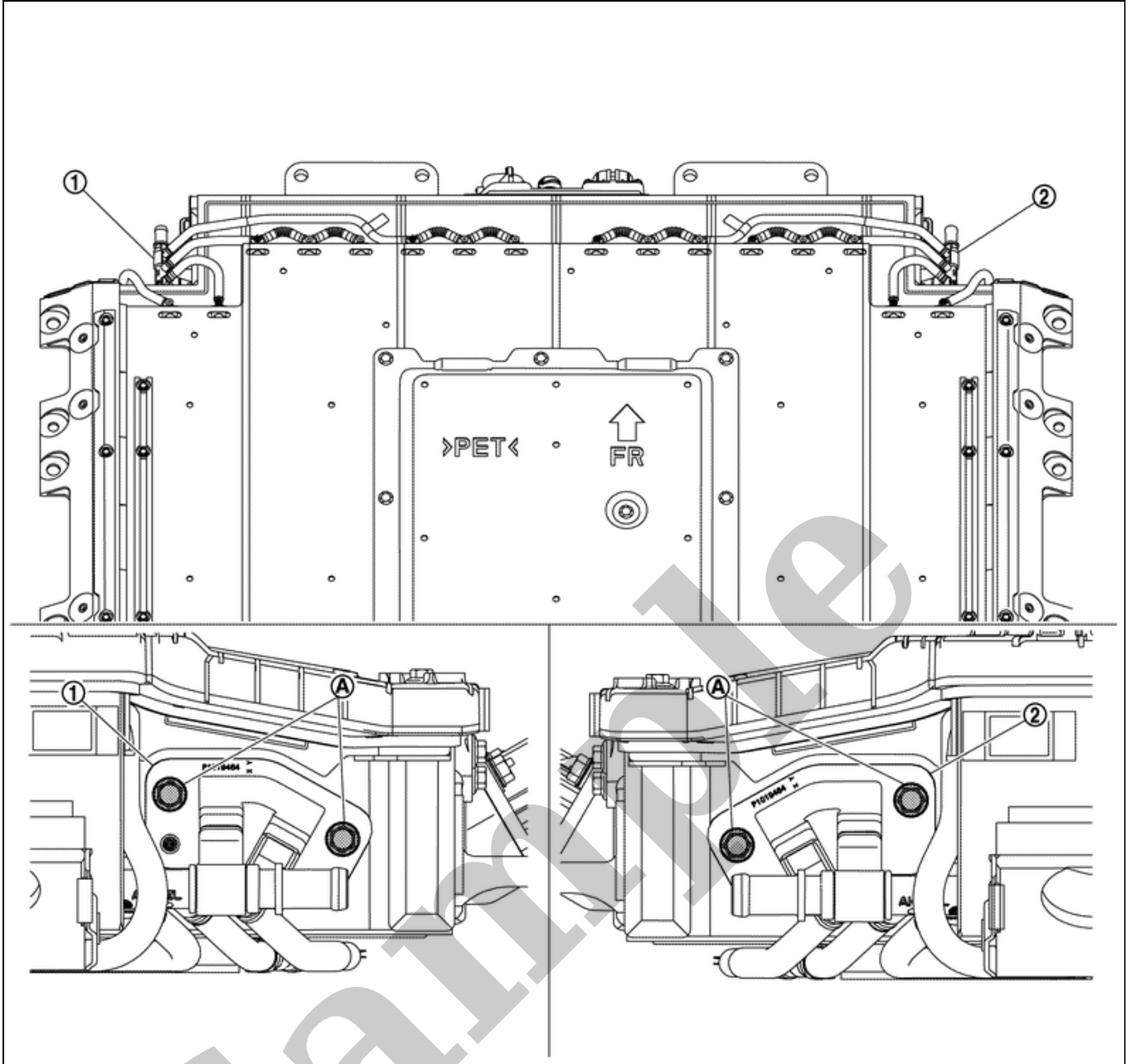


RPR-002038687-01-000346918

2. Remove mounting bolts of Li-ion battery cooler tubes (front right ① and front left ②).

CAUTION:

Li-ion battery cooler tubes (front right and front left) can be removed individually one by one and does not need to be removed together.

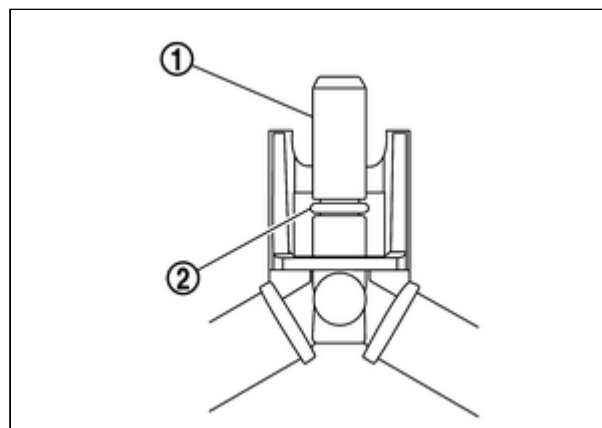


RPR-002038687-10-000346919

3. Remove Li-ion battery cooler tubes (front right and front left) from Li-ion battery.

CAUTION:

- Li-ion battery cooler tubes (front right and front left) can be removed individually one by one and does not need to be removed together.
- If the collar ① and O-ring ② at the end of connector remain in the Li-ion battery while removing Li-ion battery cooler tubes (front right and front left) from Li-ion battery, take them out.



RPR-002038687-13-000372697

LI-ION BATTERY COOLER TUBE (REAR)

CAUTION:

If LI-ion battery cooler tube (rear) is removed from Li-ion battery, since Li-ion battery cooler tube (rear) cannot be reused, replacement is required.

1 Remove Li-ion battery. Refer to [Removal & Installation](#).

2 If necessary, remove Li-ion battery cooler tubes (rear right and rear left).

1. Remove Li-ion battery cooler tubes (rear right and rear left) from Li-ion battery cooler tube (rear right and rear left) uppers, respectively.

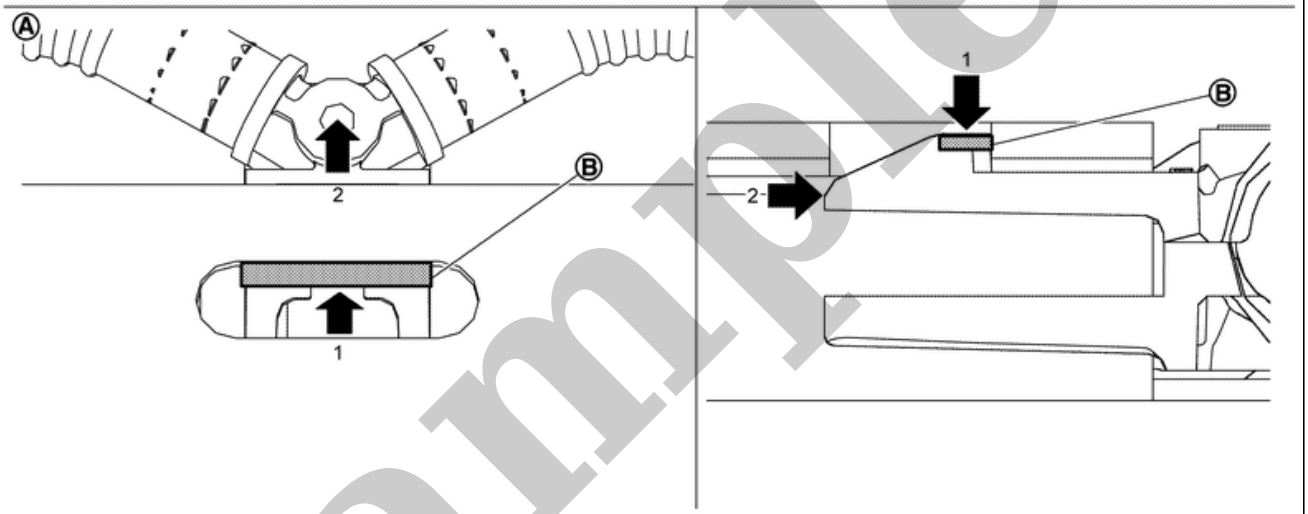
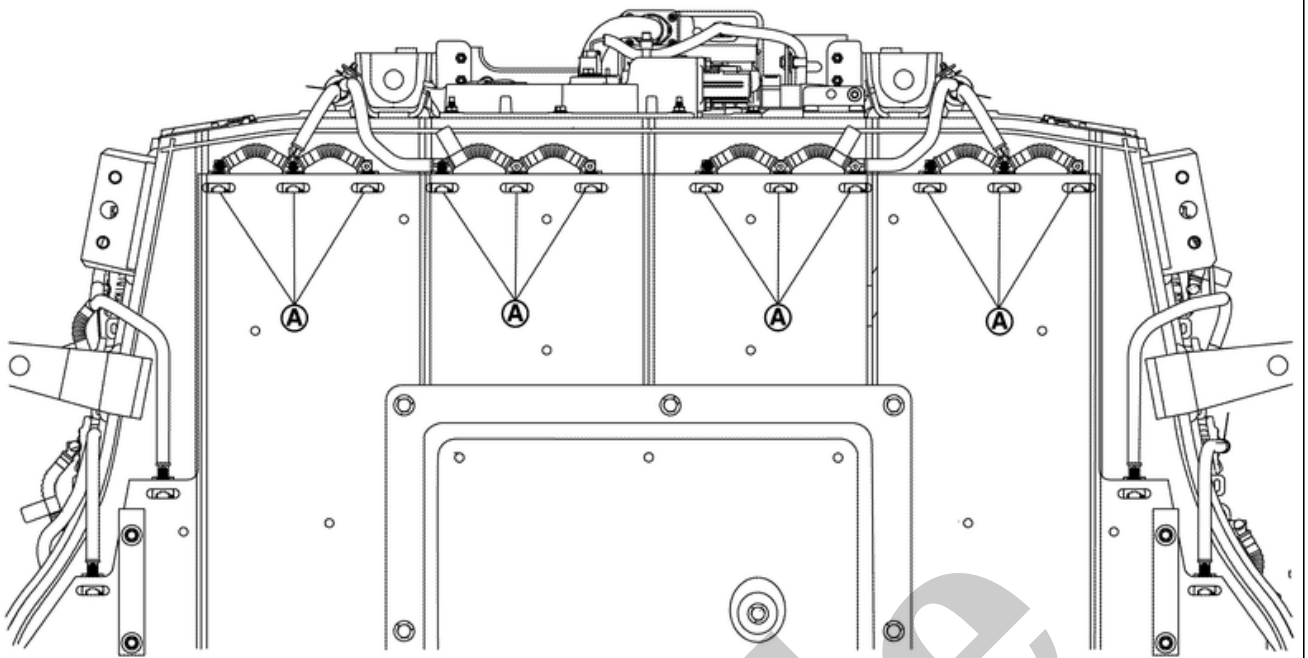
CAUTION:

Li-ion battery cooler tubes (rear right and rear left) can be removed individually one by one and does not need to be removed together.

2. Push claws **(B)** of connector on Li-ion battery cooler tubes (rear right and rear left) **(A)** and remove from Li-ion battery until all connectors are half-locked.

CAUTION:

Li-ion battery cooler tubes (rear right and rear left) can be removed individually one by one and does not need to be removed together.

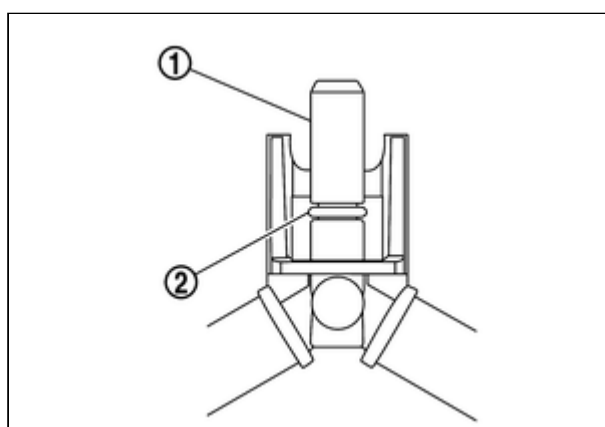


RPR-002038687-03-000402201

3. Remove Li-ion battery cooler tubes (rear right and rear left) from Li-ion battery.

CAUTION:

- Li-ion battery cooler tubes (rear right and rear left) can be removed individually one by one and does not need to be removed together.
- If the collar ① and O-ring ② at the end of connector remain in the Li-ion battery while removing Li-ion battery cooler tubes (rear right and rear left) from Li-ion battery, take them out.



RPR-002038687-14-000372697

LI-ION BATTERY COOLER 1-4 (RIGHT), LI-ION BATTERY COOLER 5-8 (LEFT)

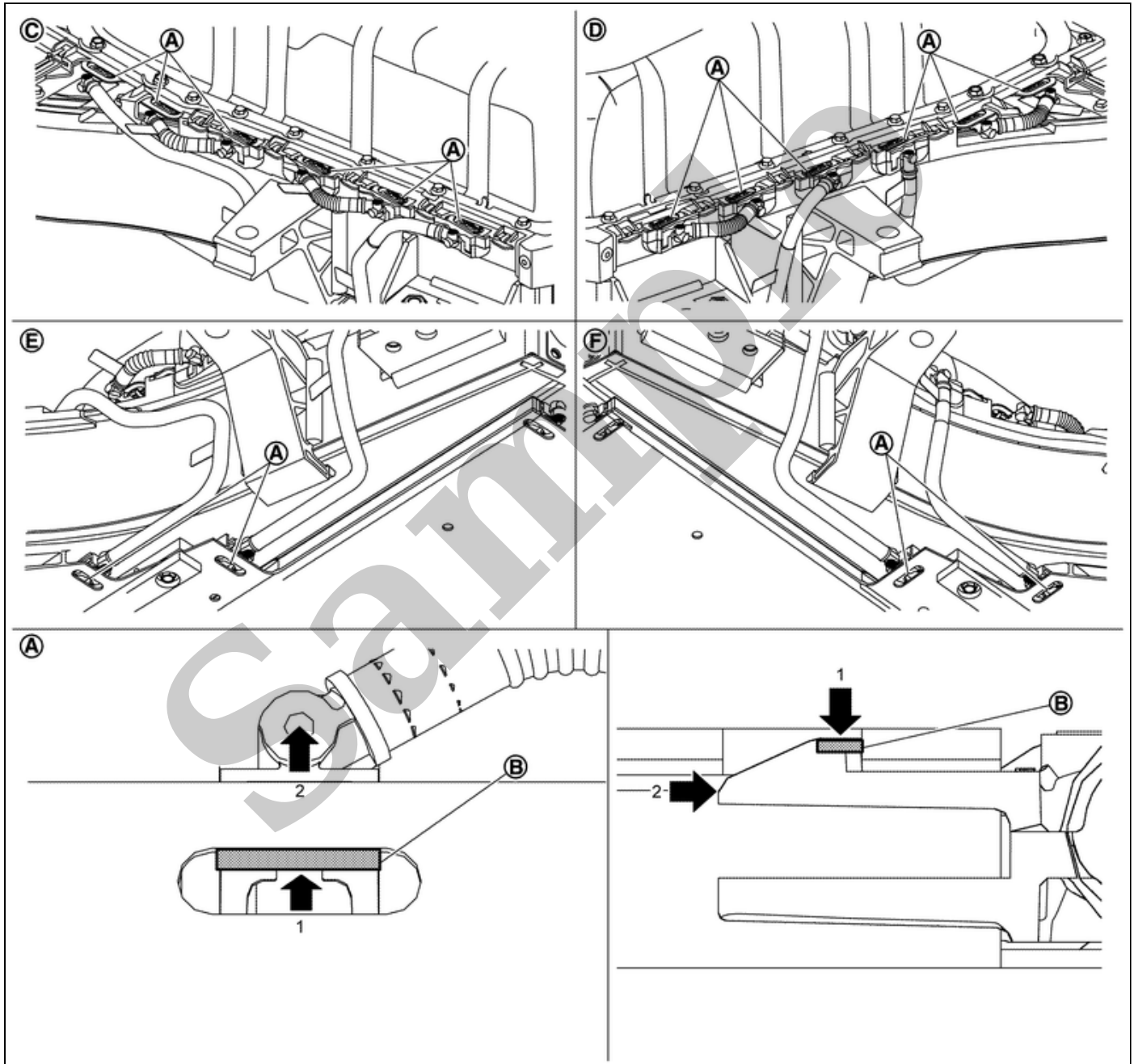
CAUTION:

Do not reuse the Li-ion battery cooler tube 1-4 (right) and Li-ion battery cooler tube 5-8 (left) when it was removed from the battery pack.

1 Remove Li-ion battery. Refer to [Removal & Installation](#).

2 Remove Li-ion battery cooler tube 1-4 (right) and Li-ion battery cooler tube 5-8 (left) .

a Push claws **B** of connector **A** on Li-ion battery cooler tubes and then remove from the Li-ion battery until all connectors are half-locked.



RPR-002038687-04-000402202

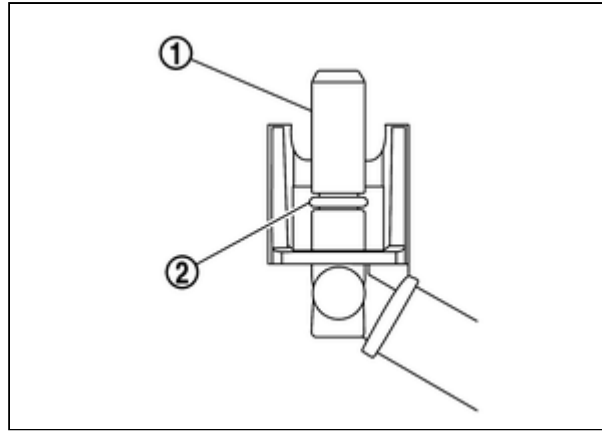
C	Left side
D	Right side
E	Left bottom
F	Right bottom

b Also remove opposite side cooler tube connectors until all connectors are half-locked.

c Remove Li-ion battery cooler tubes from Li-ion battery.

CAUTION:

If the collar ① and O-ring ② at the end of connector remain in the Li-ion battery while removing Li-ion battery cooler tubes (front right and front left) from Li-ion battery, take them out.



RPR-002038687-02-000402203

BATTERY HEATER

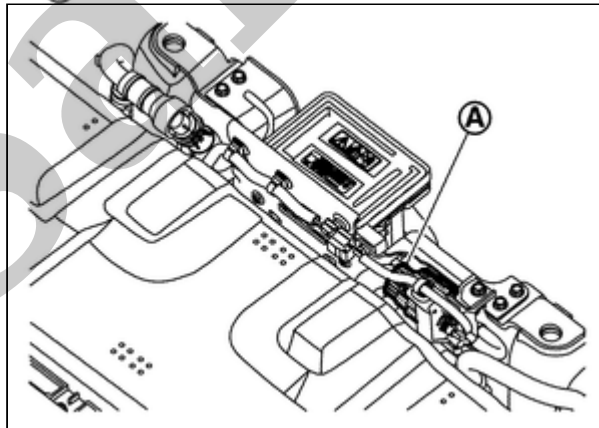
1 If necessary, remove Li-ion battery. Refer to [Removal & Installation](#).

CAUTION:

Do not reuse the Li-ion battery cooler tube 1-4 (right) and Li-ion battery cooler tube 5-8 (left) when it was removed from the battery pack.

1. Remove Li-ion battery. Refer to [Removal & Installation](#).
2. Remove Li-ion battery cooler tube 1-4 (right) and Li-ion battery cooler tube 5-8 (left) .

2 Remove high voltage harness connector ①.



RPR-002038687-06-000402190

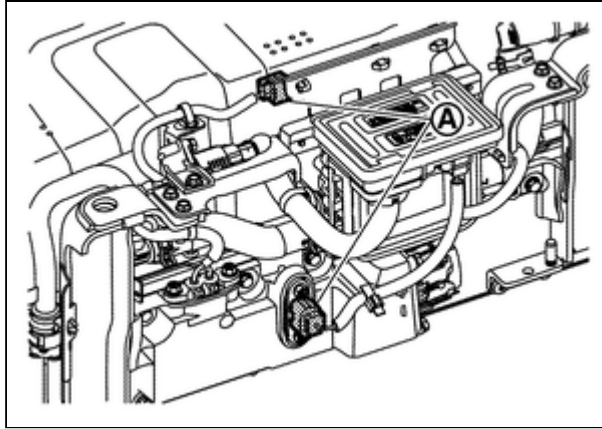
DANGER:

-  There is the danger of electric shock caused by contact with the terminals. Be sure to wear insulated protective gear.



-  Because there is the danger of electric shock, immediately insulate disconnected high voltage connectors and terminals with insulating tape.

3 Remove the harness connector ①.



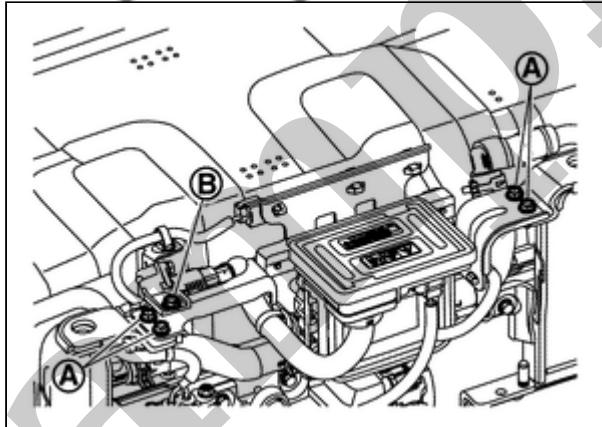
RPR-002038687-07-000402191

DANGER:

-  To prevent electric shock, wear insulated protective gear.



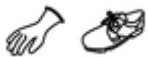
4 Remove battery heater bracket mounting bolts (A) and the bolt (B).



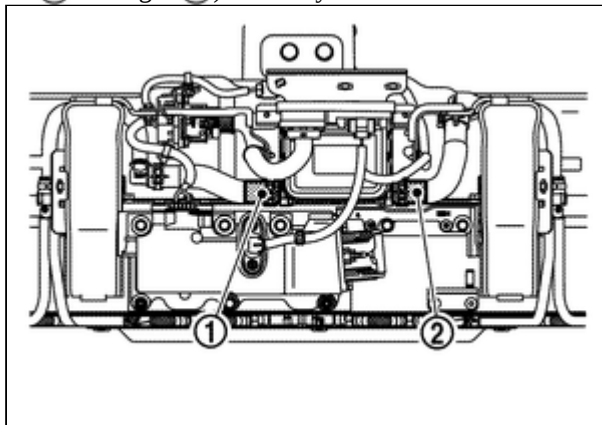
RPR-002038687-08-000402192

DANGER:

-  To prevent electric shock, wear insulated protective gear.



5 Remove Li-ion battery heater hose (left (1) and right (2)) at battery heater side.



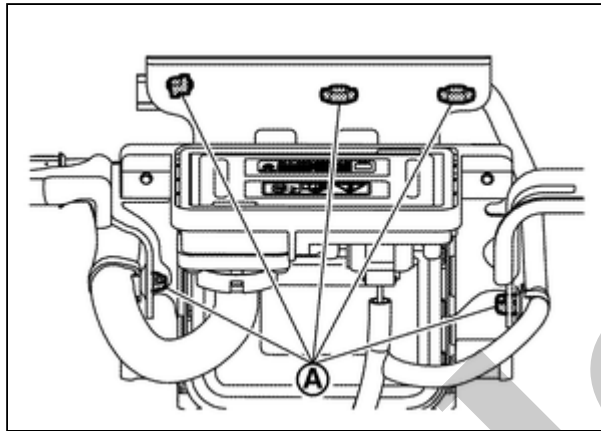
RPR-002038687-09-000402193

DANGER:

-  To prevent electric shock, wear insulated protective gear.



6 Remove harness clamp parts (A)



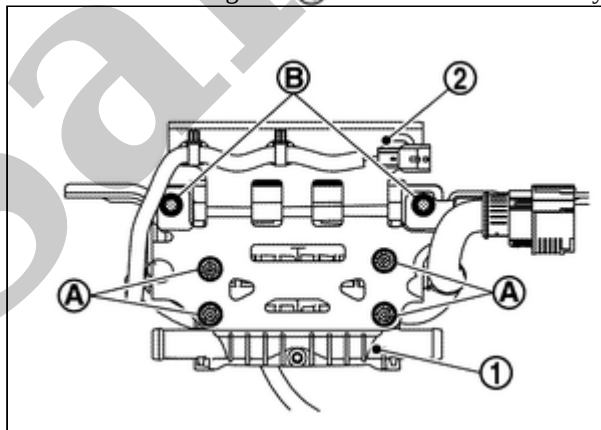
RPR-002038687-12-000402194

DANGER:

-  To prevent electric shock, wear insulated protective gear.



7 Remove the screw (A) and battery heater bracket mounting bolt (B). And then remove battery heater bracket from battery heater.



RPR-002038687-05-000402195

DANGER:

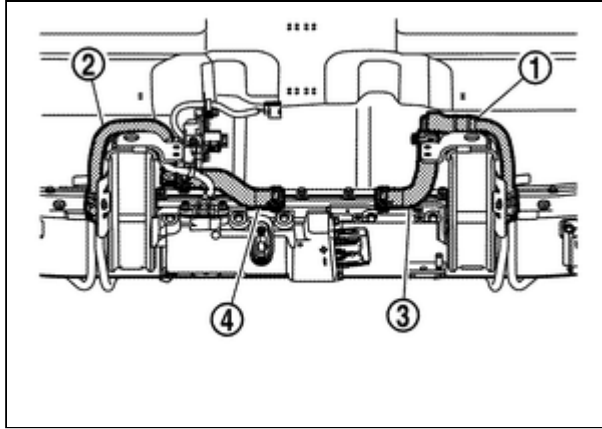
-  To prevent electric shock, wear insulated protective gear.



CAUTION:

The screw (A) must not be loosened unless the battery heater is replaced because it is necessary to replace the battery heater when the screw is loosened.

8 If necessary, remove each tube and hose.



RPR-002038687-11-000402196

①:	Li-ion battery cooler tube (Rear right) upper
②:	Li-ion battery cooler tube (Rear left) upper
③:	Li-ion battery cooler hose (Right)
④:	Li-ion battery cooler hose (Left)

DANGER:

-  To prevent electric shock, wear insulated protective gear.



ASSEMBLY

Assemble in the reverse order of disassembly, and pay attention to the following caution.

CAUTION:

After refilling coolant, perform leak check. Refer to [COOLANT : Inspection](#).