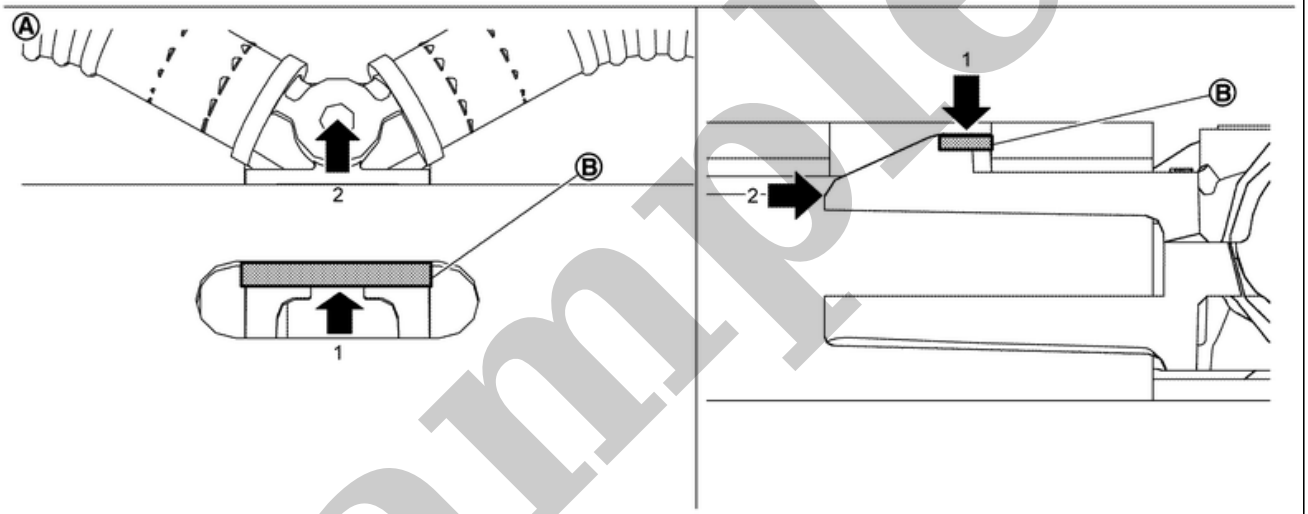
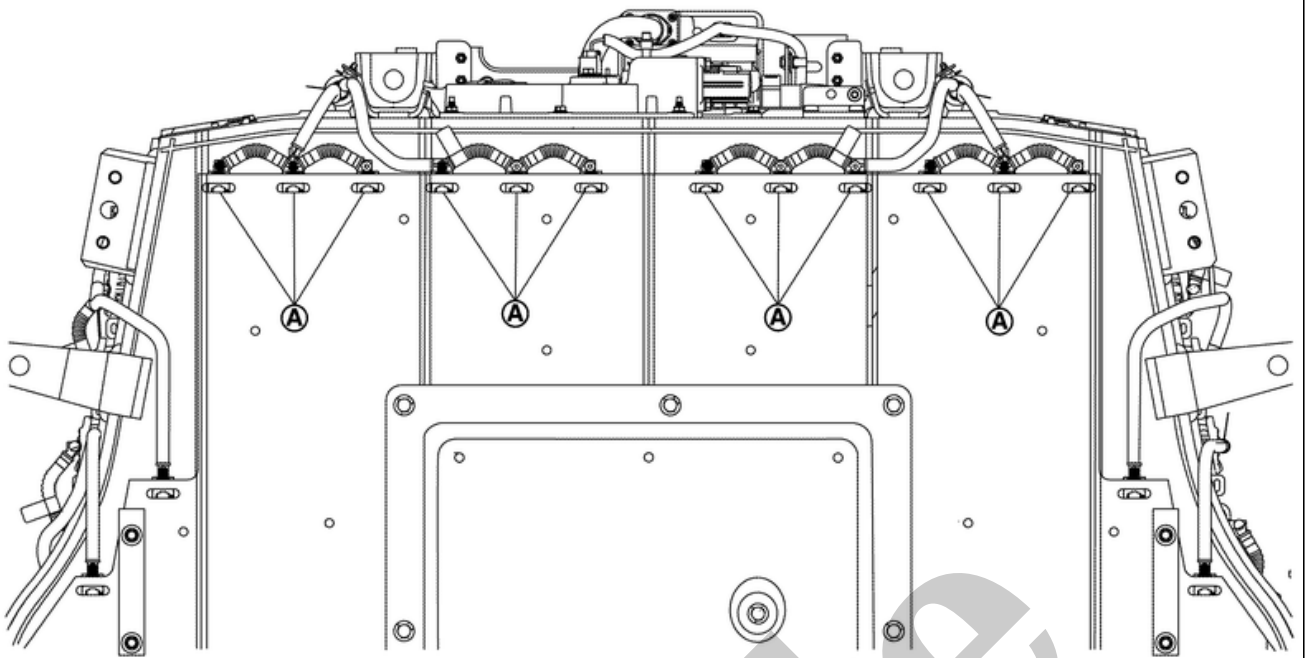


Your Ultimate Source for OEM Repair Manuals

FactoryManuals.net is a great resource for anyone who wants to save money on repairs by doing their own work. The manuals provide detailed instructions and diagrams that make it easy to understand how to fix a vehicle.

2009 NISSAN Pathfinder OEM Service and Repair Workshop Manual

[Go to manual page](#)

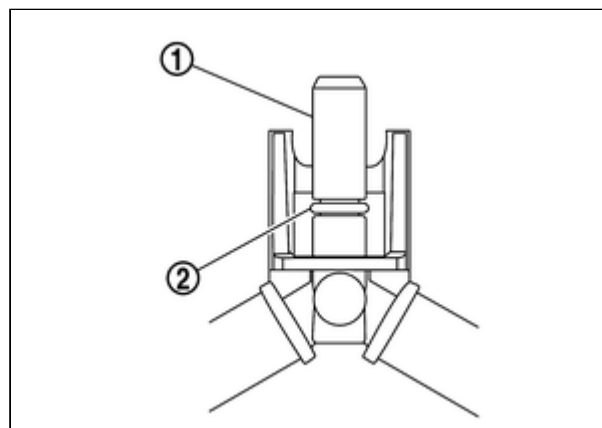


RPR-001999667-03-000402201

3. Remove Li-ion battery cooler tubes (rear right and rear left) from Li-ion battery.

CAUTION:

- Li-ion battery cooler tubes (rear right and rear left) can be removed individually one by one and does not need to be removed together.
- If the collar ① and O-ring ② at the end of connector remain in the Li-ion battery while removing Li-ion battery cooler tubes (rear right and rear left) from Li-ion battery, take them out.



RPR-001999667-14-000372697

LI-ION BATTERY COOLER 1-4 (RIGHT), LI-ION BATTERY COOLER 5-8 (LEFT)

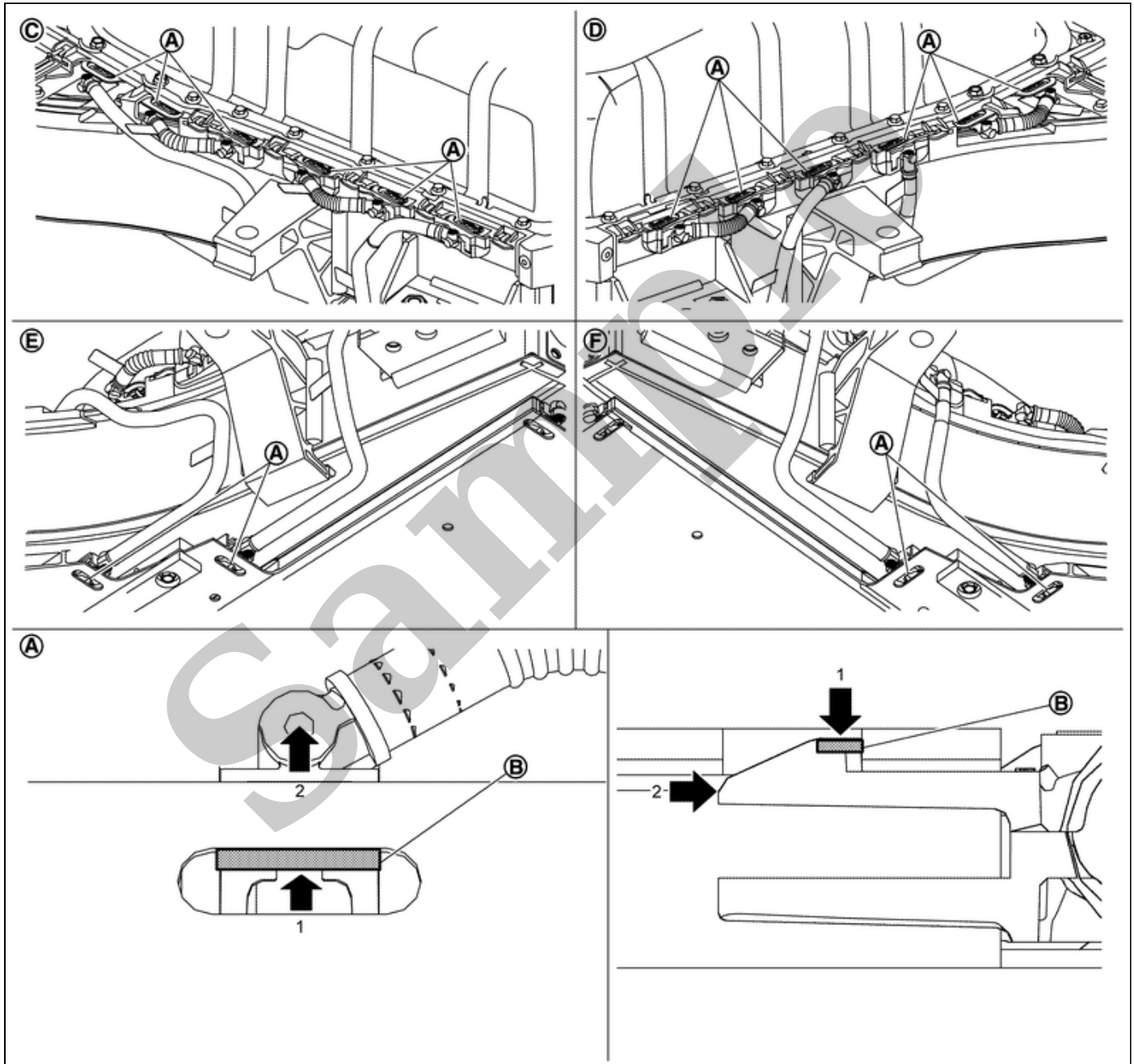
CAUTION:

Do not reuse the Li-ion battery cooler tube 1-4 (right) and Li-ion battery cooler tube 5-8 (left) when it was removed from the battery pack.

1 Remove Li-ion battery. Refer to [Removal & Installation](#).

2 Remove Li-ion battery cooler tube 1-4 (right) and Li-ion battery cooler tube 5-8 (left).

a Push claws **B** of connector **A** on Li-ion battery cooler tubes and then remove from the Li-ion battery until all connectors are half-locked.



RPR-001999667-04-000402202

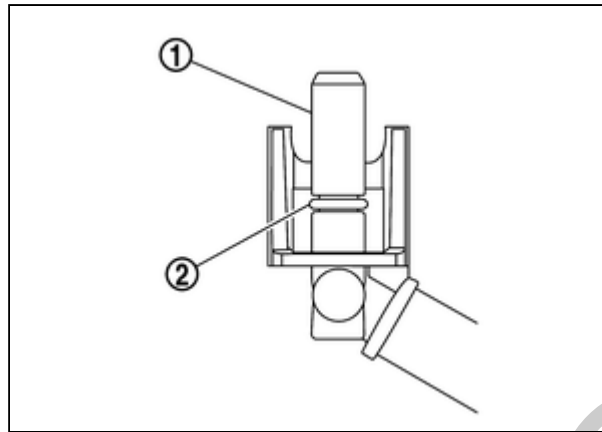
C	Left side
D	Right side
E	Left bottom
F	Right bottom

b Also remove opposite side cooler tube connectors until all connectors are half-locked.

c Remove Li-ion battery.
Cooler tubes from Li-ion battery.

CAUTION:

If the collar ① and O-ring ② at the end of connector remain in the Li-ion battery while removing Li-ion battery cooler tubes (front right and front left) from Li-ion battery, take them out.



RPR-001999667-02-000402203

BATTERY HEATER

1 If necessary, remove Li-ion battery. Refer to [Removal & Installation](#).

CAUTION:

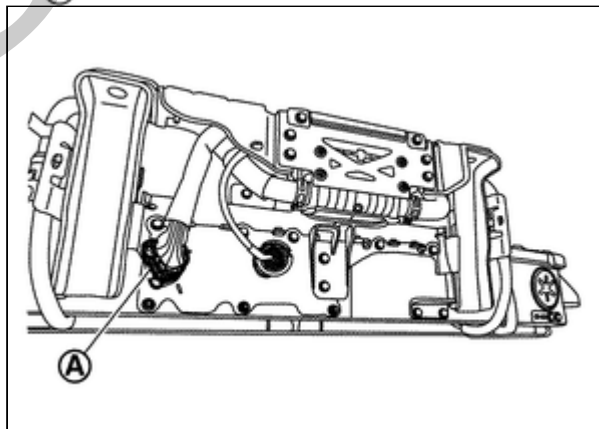
Do not reuse the Li-ion battery cooler tube 1-4 (right) and Li-ion battery cooler tube 5-8 (left) when it was removed from the battery pack.

1. Remove Li-ion battery. Refer to [Removal & Installation](#).
2. Remove Li-ion battery cooler tube 1-4 (right) and Li-ion battery cooler tube 5-8 (left).

CAUTION:

If the collar and O-ring at the end of connector remain in the Li-ion battery while removing Li-ion battery cooler tubes (front right and front left) from Li-ion battery, take them out.

2 Remove high voltage harness connector ①.



RPR-001999667-06-000346911

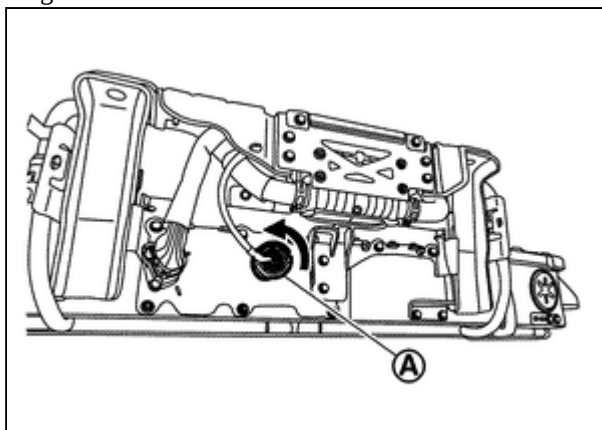
DANGER:

-  There is the danger of electric shock caused by contact with the terminals. Be sure to wear insulated protective gear.



-  Because there is the danger of electric shock, immediately insulate disconnected high voltage connectors and terminals with insulating tape.

3 Remove harness connector (A) by turning in the direction of arrow.



RPR-001999667-07-000346912

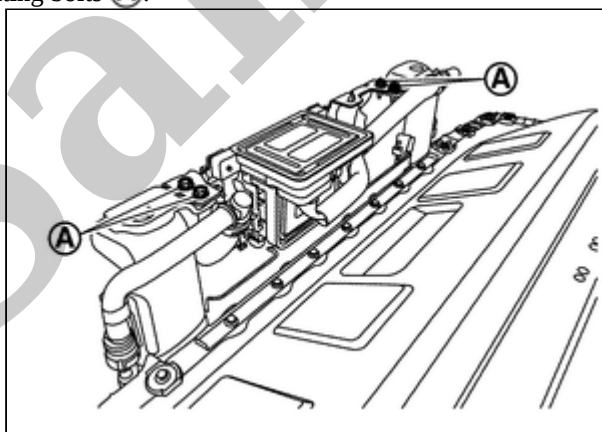
DANGER:

-  There is the danger of electric shock caused by contact with the terminals. Be sure to wear insulated protective gear.



-  Because there is the danger of electric shock, immediately insulate disconnected high voltage connectors and terminals with insulating tape.

4 Remove battery heater bracket mounting bolts (A).



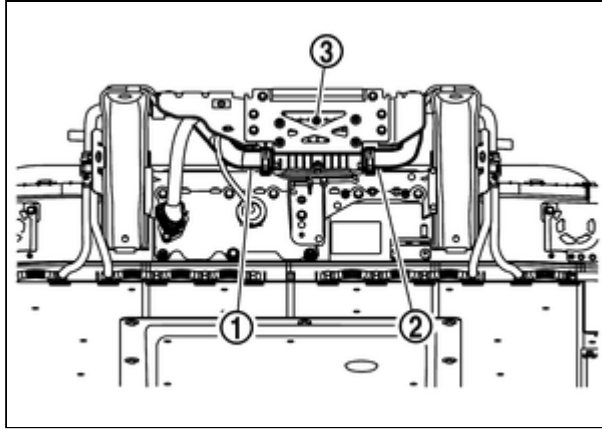
RPR-001999667-08-000346913

DANGER:

-  To prevent electric shock, wear insulated protective gear.



5 Remove battery heater sides only of Li-ion battery heater hose {left (1) and right (2)}



RPR-001999667-15-000346914

③

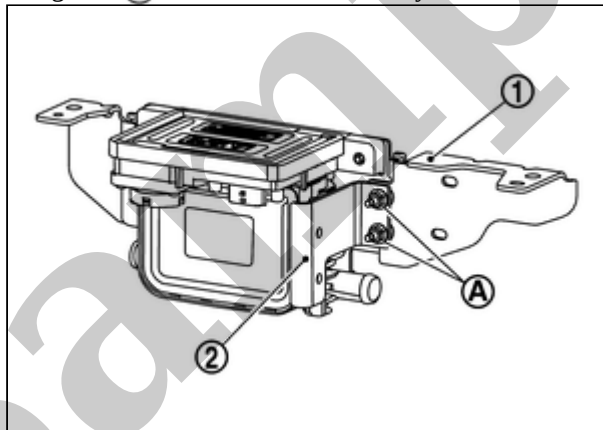
:battery heater bracket 4

DANGER:

-  To prevent electric shock, wear insulated protective gear.



6 Remove battery heater bracket 1 mounting nuts (A), and then remove battery heater bracket 1 (2) from battery heater bracket 2 (1).



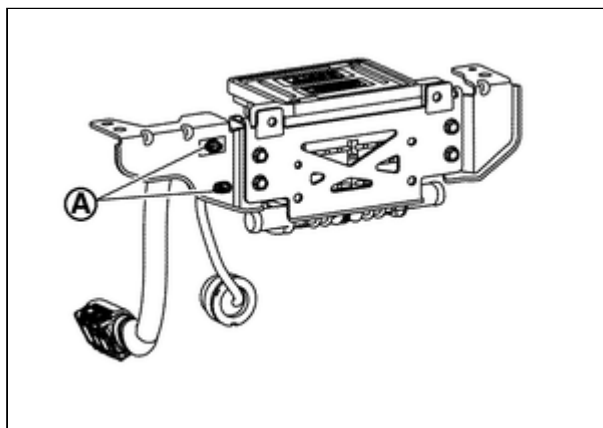
RPR-001999667-09-000372898

DANGER:

-  To prevent electric shock, wear insulated protective gear.



7 Remove harness clamp parts (A)

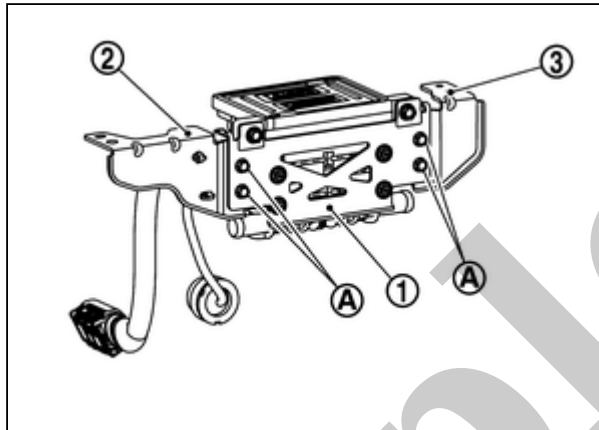


DANGER:

-  To prevent electric shock, wear insulated protective gear.



8 Remove mounting bolts (A) of battery heater brackets 2 and 3, and then remove battery heater brackets 2 (2) and 3 (3) from battery heater bracket 4 (1).



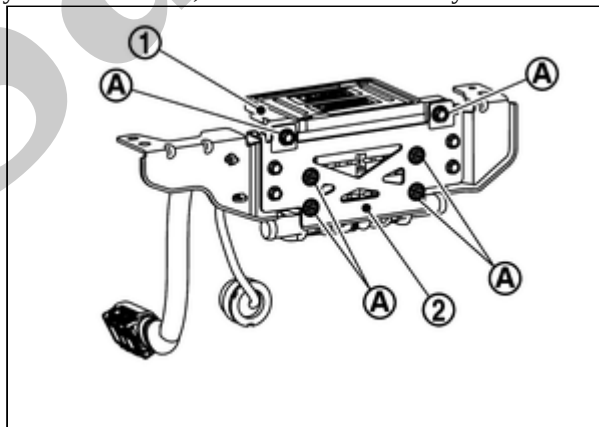
RPR-001999667-11-000372900

DANGER:

-  To prevent electric shock, wear insulated protective gear.



9 Remove mounting bolts (A) of battery heater bracket 4, and then remove battery heater bracket 4 (2) from battery heater (1).



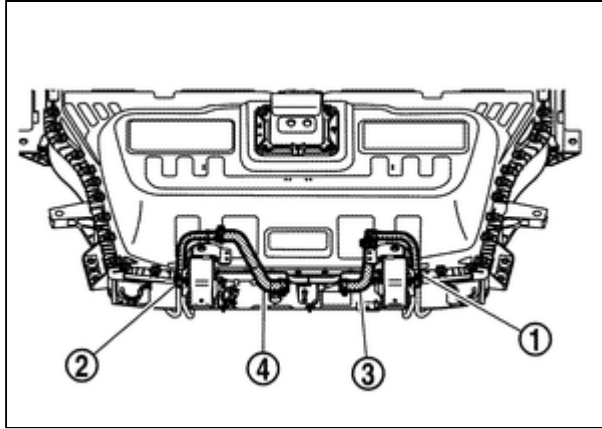
RPR-001999667-05-000372934

DANGER:

-  To prevent electric shock, wear insulated protective gear.



10 If necessary, remove Li-ion battery cooler tubes {rear right upper (1) and rear left upper (2)}, and Li-ion battery cooler hoses {right (3) and left (4)}.



RPR-001999667-24-000346917

DANGER:

-  To prevent electric shock, wear insulated protective gear.



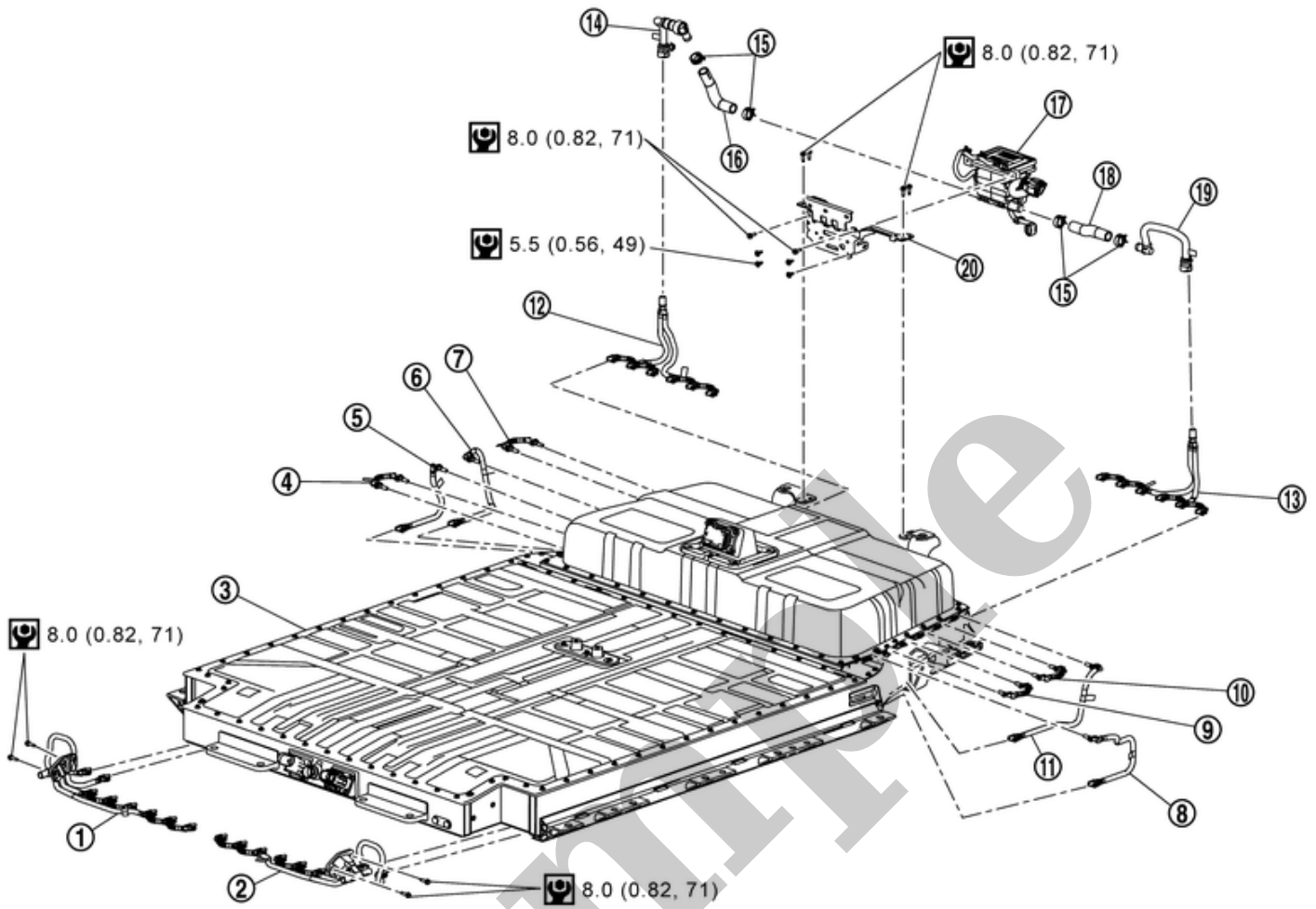
ASSEMBLY

Assemble in the reverse order of disassembly, and pay attention to the following caution.



CAUTION:

After refilling coolant, perform leak check. Refer to [COOLANT : Inspection](#).

SEC. 291



RDE-002028246-02-000402189

①	Li-ion battery cooler tube (front right)	②	Li-ion battery cooler tube (front left)	③	Li-ion battery
④	Li-ion battery cooler tube 1 (right)	⑤	Li-ion battery cooler tube 2 (right)	⑥	Li-ion battery cooler tube 3 (right)
⑦	Li-ion battery cooler tube 4 (right)	⑧	Li-ion battery cooler tube 5 (left)	⑨	Li-ion battery cooler tube 6 (left)
⑩	Li-ion battery cooler tube 7 (left)	⑪	Li-ion battery cooler tube 8 (left)	⑫	Li-ion battery cooler tube (rear right)
⑬	Li-ion battery cooler tube (rear left)	⑭	Li-ion battery cooler tube (rear right) upper	⑮	Clamp
⑯	Li-ion battery cooler hose (right)	⑰	Battery heater	⑱	Li-ion battery cooler hose (left)
⑲	Li-ion battery cooler tube (rear left) upper	⑳	Battery heater bracket		
	: N·m (kg-m, in-lb)				
	: N·m (kg-m, ft-lb)				

DANGER:

Because hybrid vehicles and electric vehicles contain a high voltage battery, there is a risk of electric shock, electric leakage, or similar accidents if the vehicle is handled incorrectly. Be sure to follow the correct work procedures when performing inspection and maintenance.

WARNING:

- Be sure to remove the service plug in order to shut off the high voltage circuits before performing inspection or maintenance of high voltage system harnesses and parts.
- Be sure to put the removed service plug in pocket and carry it or store it in a tool box or other container so that another person does not accidentally connect it while work is in progress.
- Be sure to put on insulating protective gear before beginning work on the high voltage system.
- Clearly identify the persons responsible for high voltage work and ensure that other persons do not touch the vehicle. When not working, cover high voltage components with an anti-static cover sheet or similar item to prevent contact with other persons.
- Refer to [PRECAUTIONS FOR HIGH VOLTAGE : Precautions](#).

CAUTION:

There is the possibility of a malfunction occurring if the vehicle is changed to READY status while the service plug is removed. Therefore do not change the vehicle to READY status unless instructed to do so in the Service Manual.

WARNING:

Prepare for work on the high-voltage system. Refer to [HOW TO DISCONNECT HIGH VOLTAGE : Precautions](#).

DISASSEMBLY

LI-ION BATTERY COOLER TUBE (FRONT)

CAUTION:

If LI-ion battery cooler tube (front) is removed from Li-ion battery, since Li-ion battery cooler tube (front) cannot be reused, replacement is required.

1 If necessary, remove Li-ion battery cooler tubes (front right and front left).

1. Push claws **(B)** of connector on Li-ion battery cooler tubes (front right and front left) **(A)** and remove from the Li-ion battery until all connectors are half-locked.

CAUTION:

Li-ion battery cooler tubes (front right and front left) can be removed individually one by one and does not need to be removed together.