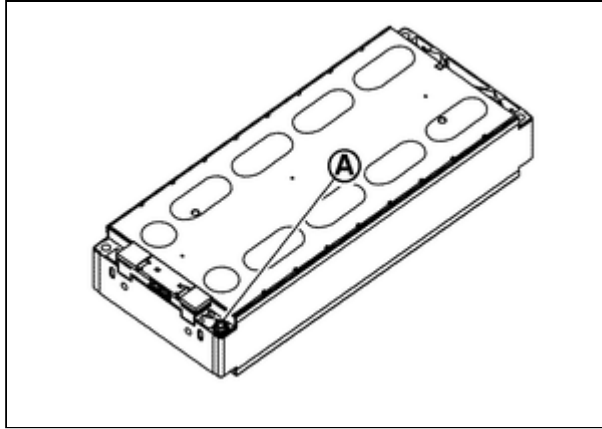


Your Ultimate Source for OEM Repair Manuals

FactoryManuals.net is a great resource for anyone who wants to save money on repairs by doing their own work. The manuals provide detailed instructions and diagrams that make it easy to understand how to fix a vehicle.


2009 NISSAN NP300 Pickup Single Cab OEM Service and Repair Workshop Manual

[Go to manual page](#)



RPR-001999642-04-000365596

WARNING:

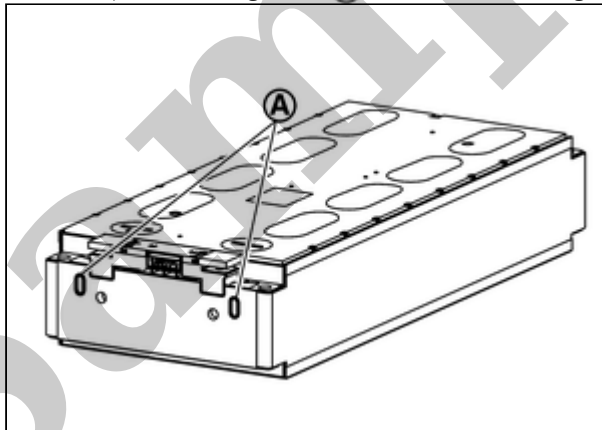
 To prevent electric shock, wear insulated protective gear.



NOTE:


When module is lifted up, load the module on battery pack lower case by lowering mobile floor crane.

15 Hang carabiners (service part: 299A3 5MP0A) in the lifting holes (A) and install belt slinger.



RPR-001999642-06-000365601

WARNING:

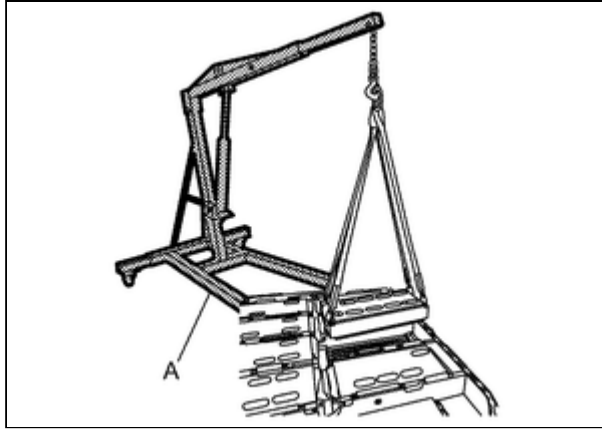
 To prevent electric shock, wear insulated protective gear.



NOTE:


Carabiners (service part: 299A3 5MP0A) are packed with new module.

16 Remove module from battery lower case by lifting up 4 points of module with mobile floor crane.



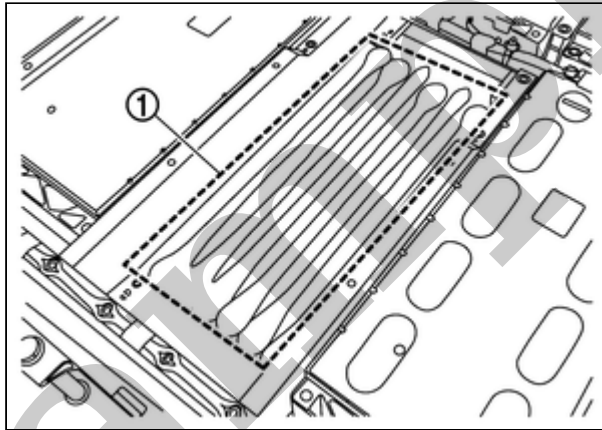
RPR-001999642-07-000365602

WARNING:

 To prevent electric shock, wear insulated protective gear.



17 Peel off gap filler ① from battery pack lower case.



RPR-001999642-13-000365604

WARNING:

 To prevent electric shock, wear insulated protective gear.



 **NOTE:**

- Gap filler can be peeled off with hands.
- If it is not peeled off with hands, use resin scraper without damaging battery lower case.


ASSEMBLY

Note the following items, and assemble in the reverse order of disassembly.

DANGER:

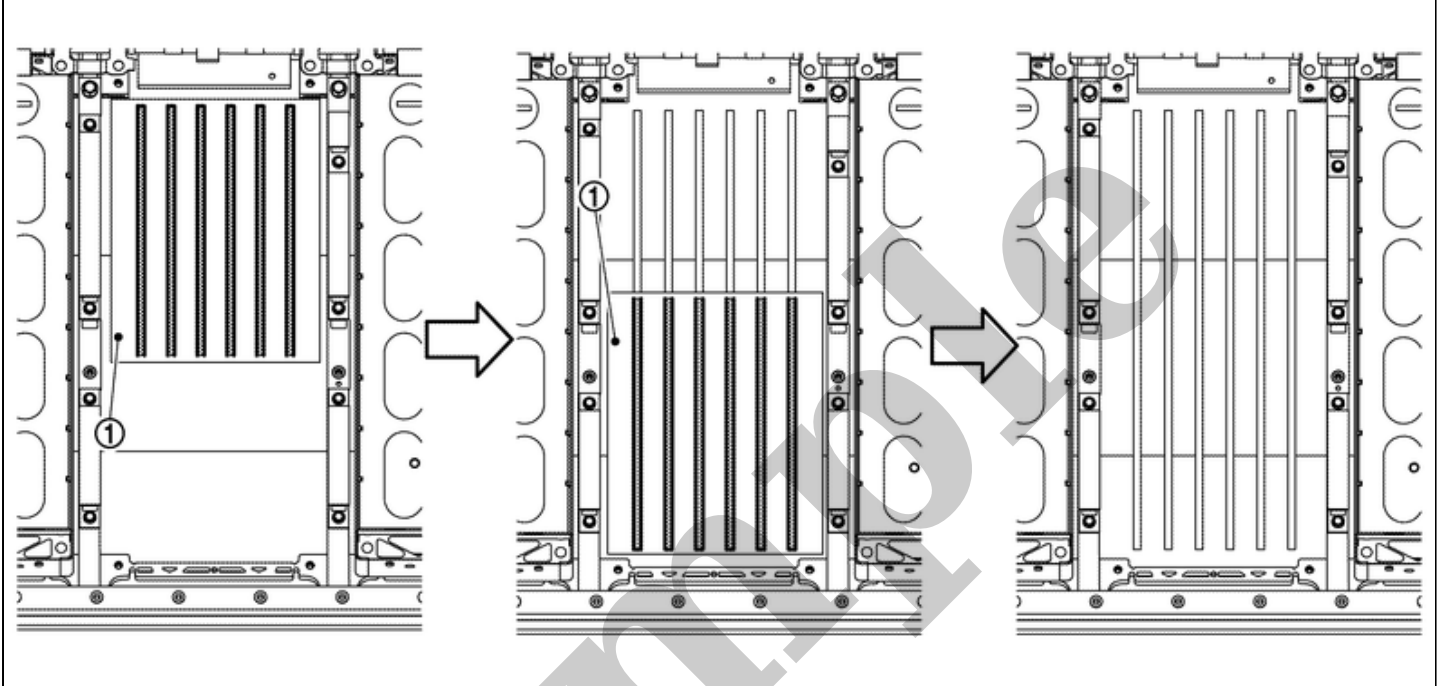
-  There is the danger of electric shock caused by contact with the terminals. Be sure to wear insulated protective gear and use insulated tools.



-  Because there is a danger of electric shock and fire, never allow bus bar to contact a wrong terminal.
 - If bus bar contacts a wrong terminal, the circuit becomes energized and a short may occur.
 - Always keep the bus bar cover closed until immediately before the installation of bus bar.

1 Check battery pack lower case inside for foreign material or peeled gap filler

2 Set gabari sheet ① to battery pack lower case as shown in the figure and then write lines on battery pack lower case with oil-based pen.



RPR-001999642-41-000365610

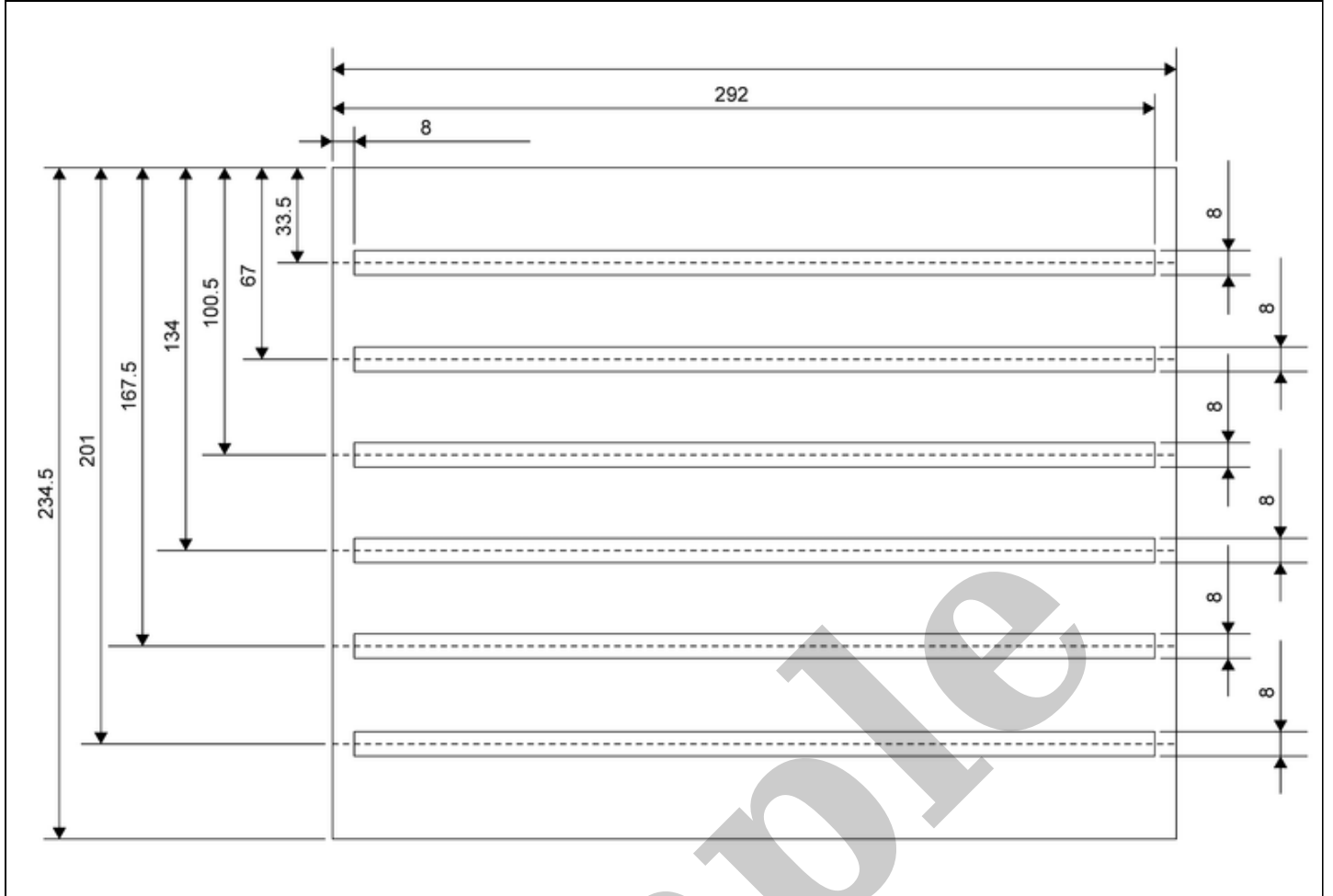
CAUTION:

- Use a pen that does not have a thickness like paint.
- Place gabari sheet in close contact with module mounting bracket and center it.



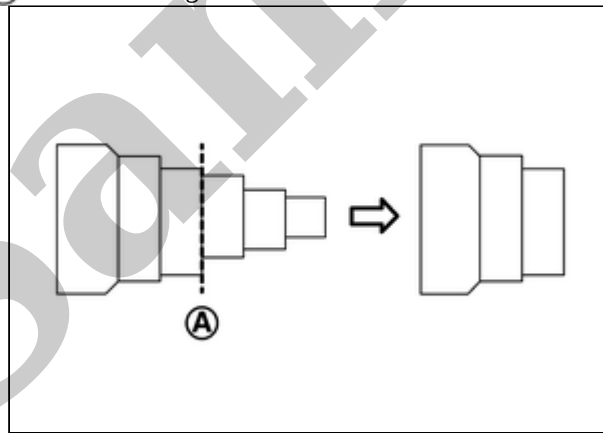
NOTE:

Size of gabari sheet is shown in the figure.



RPR-001999642-19-000365611

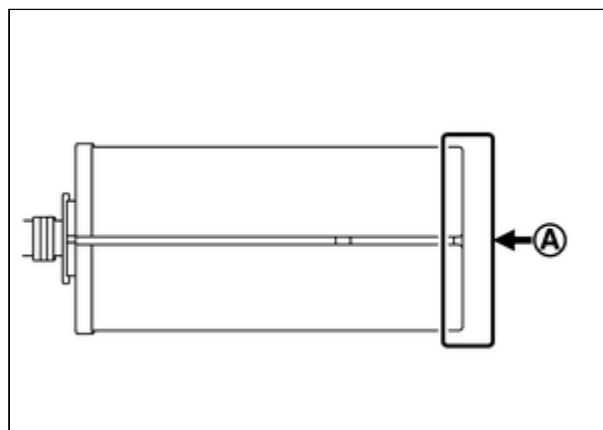
3 Cut the static mixer at the position (A) shown in the figure.



RPR-001999642-42-000369881

4 After taking out cartridge from packing box, check the followings;

- No evidence of liquid leakage in the packing box.
- No liquid leakage from bottom of cartridge (A).



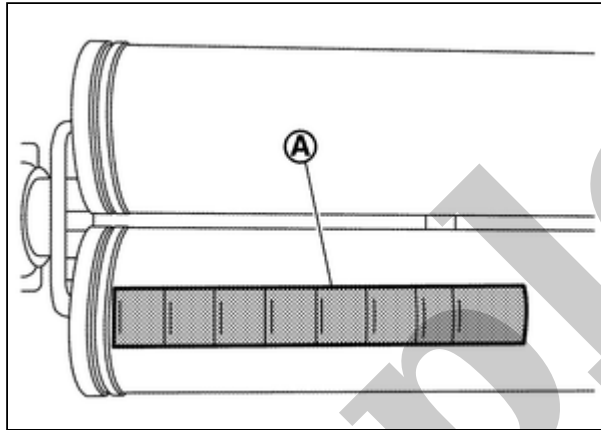
CAUTION:

- If leakage is found, gap filler is separated. Prepare a replacement [Battery Gap Filler Kit (Service Part: B9522 5MP0A)] without using it.
- Check carefully for leakage because liquid is colorless.

5 Set static mixer to cartridge.

6 Set cartridge to the gap filler gun [SST: BP2000400Z (J-53350)].

7 Attach guideline label **A** to cartridge as shown in the figure.



RPR-001999642-20-000365612

CAUTION:

Since guideline labels are depending on specification of battery and attached positions, select and attach specified one.

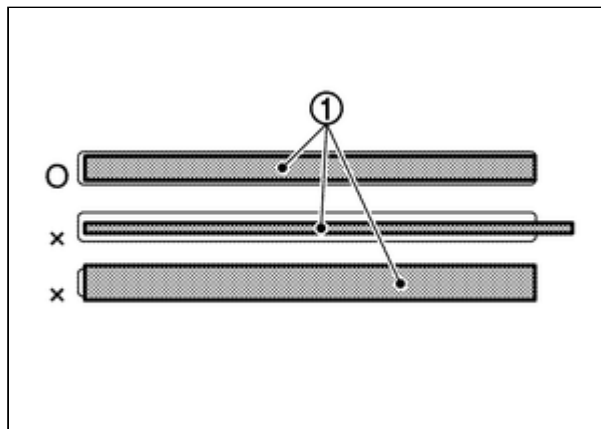
Guideline label

: C-108 ml

8 Apply gap filler in accordance with lines written on the battery pack lower case.

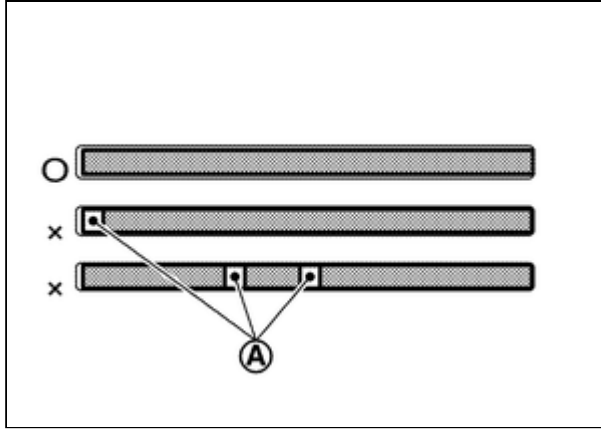
CAUTION:

- Apply one row using one scale on cartridge. (If there is surplus, add it to a place with less amount.)
- If gap filler **①** is applied thicker than the width of the lines, the amount will be short, so be careful.



RPR-001999642-21-000369882

- When applying gap filler, if the coating bead contains colorless liquid **A**, stop to use it because gap filler is separated and prepare a replacement [Battery Gap Filler Kit (service part: B9522 5MP0A)].



RPR-001999642-35-000377921

- The process from the start of gap filler application to the completion of module installation (including tightening bolt) must be within 1 hour.



NOTE:

One cartridge can be applied for just one module.

9 Install locate pin [SST: KV99119700 (J-53349)] to battery pack lower case.

10 Install module in the reverse order of removal.

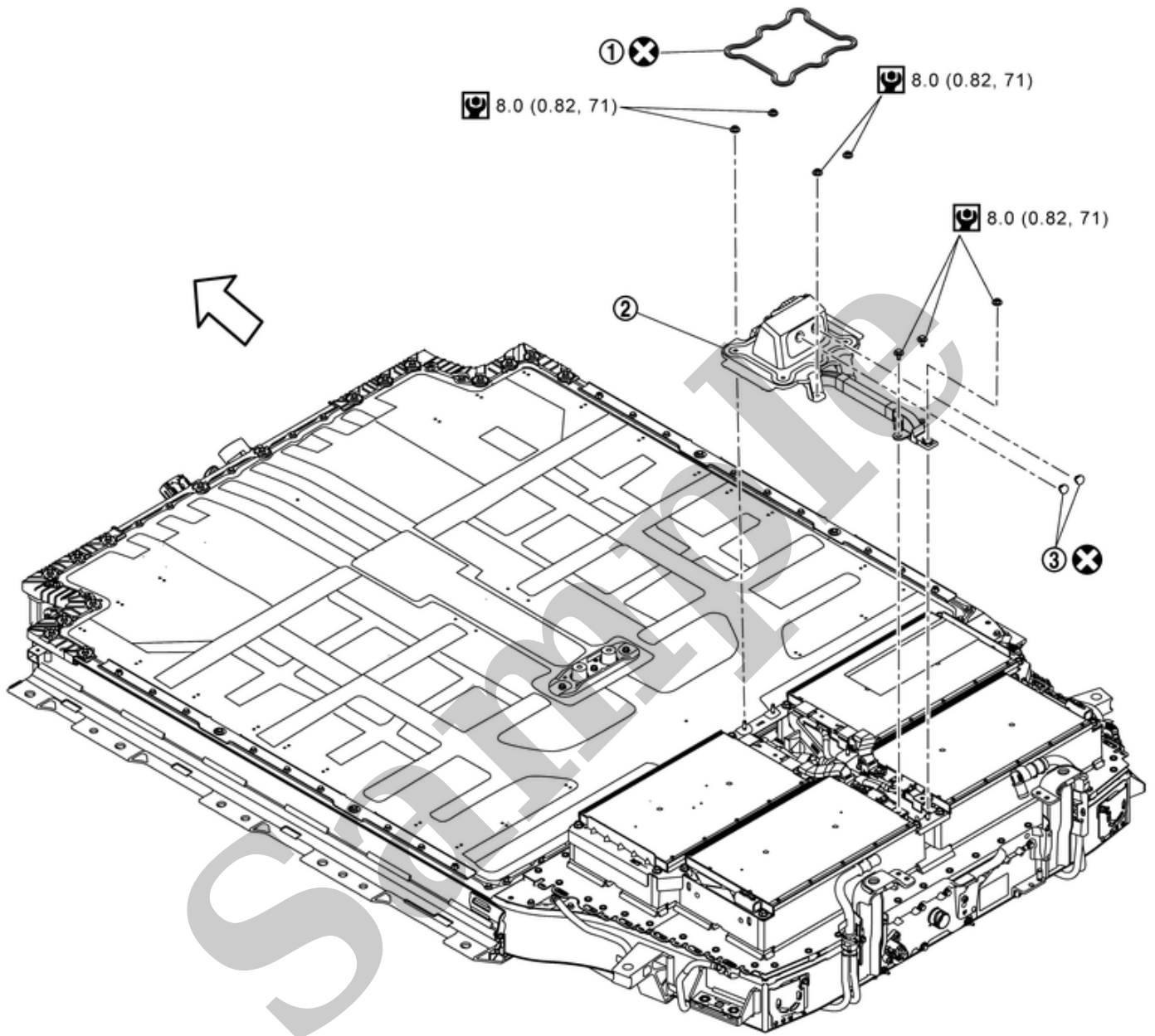


NOTE:

When installing module mounting bolts, remove locate pin [SST: KV99119700 (J-53349)].

REMOVAL

SEC. 291



RDE-001999645-03-000402138

①	Seal	②	Service plug bracket	③	Breather
←	: Vehicle front				
⊗	: Always replace after every disassembly.				
⊙	: N·m (kg-m, in-lb)				

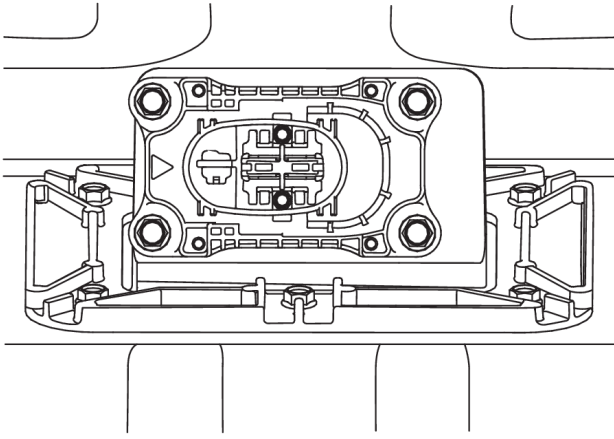
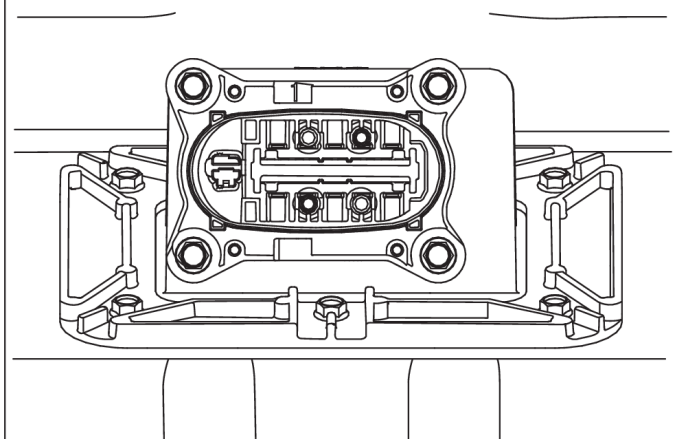
DISASSEMBLY



NOTE:

The size of service plug switch differs depends on Li-ion Battery specification.

Remove the service plug and confirm its form.

A**B**

RDE-001957695-ILLU-000009929

A

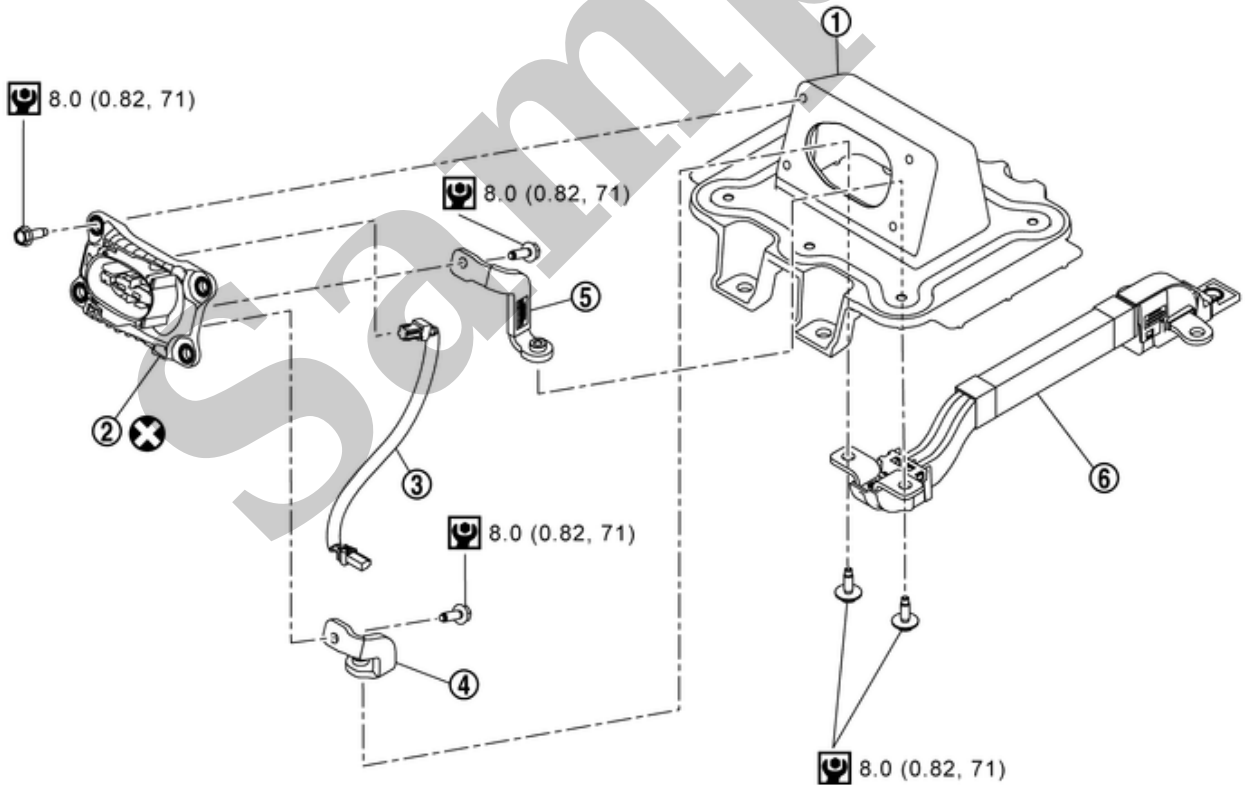
: TYPE A

B

: TYPE B

TYPE A

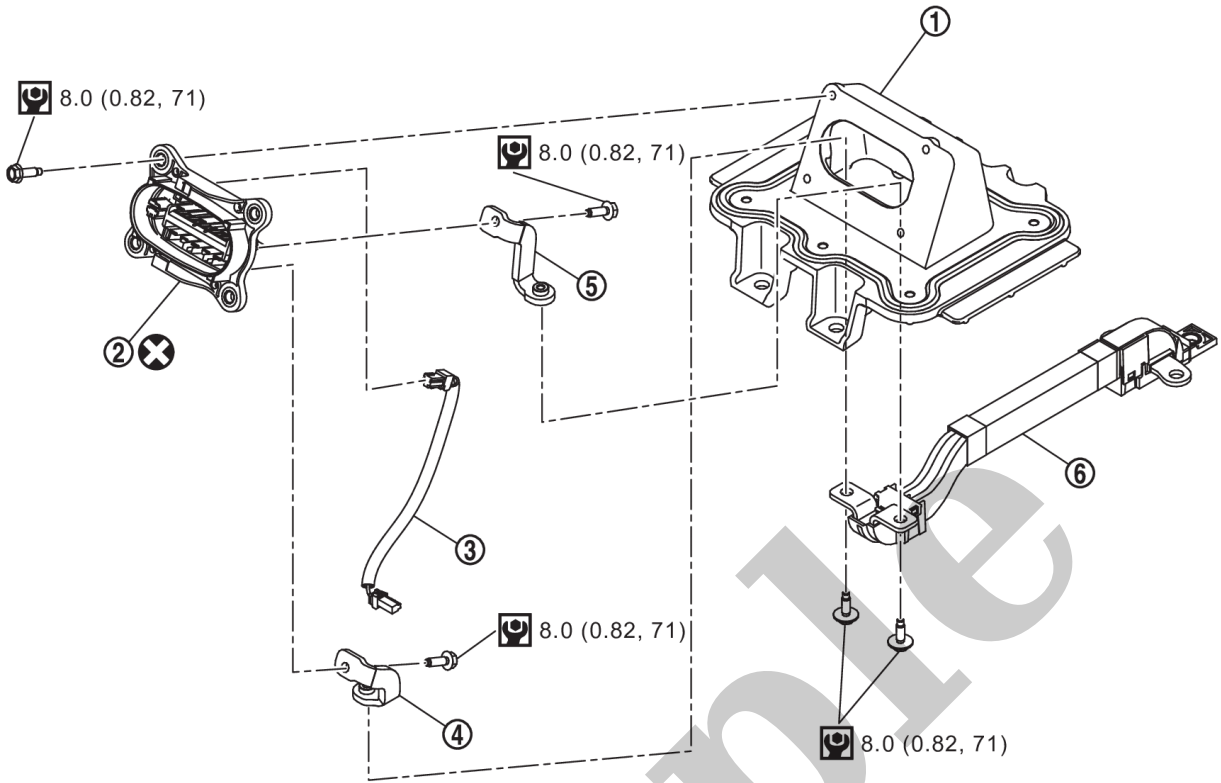
SEC. 291



RDE-001999645-04-000402139

①	Service plug bracket	②	Service plug switch	③	Engagement detection switch (service plug) harness
④	Busbar 14	⑤	Busbar 13	⑥	Busbar 12
⊗	: Always replace after every disassembly.				
⊙	: N·m (kg·m, in·lb)				

SEC. 291



ILLU-000009829

①	Service plug bracket	②	Service plug switch	③	Engagement detection switch (service plug) harness
④	Busbar 14	⑤	Busbar 13	⑥	Busbar 12
⊗	: Always replace after every disassembly.				
🔩	: N·m (kg-m, in-lb)				