

Your Ultimate Source for OEM Repair Manuals

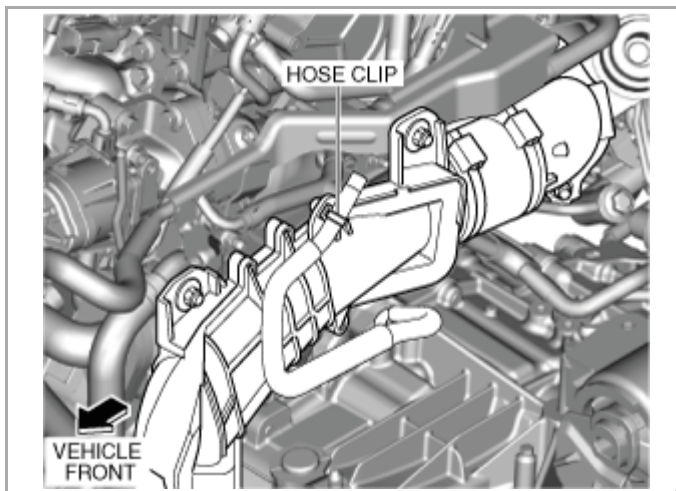
FactoryManuals.net is a great resource for anyone who wants to save money on repairs by doing their own work. The manuals provide detailed instructions and diagrams that make it easy to understand how to fix a vehicle.

2008 MAZDA CX-7 OEM Service and Repair Workshop Manual

[Go to manual page](#)

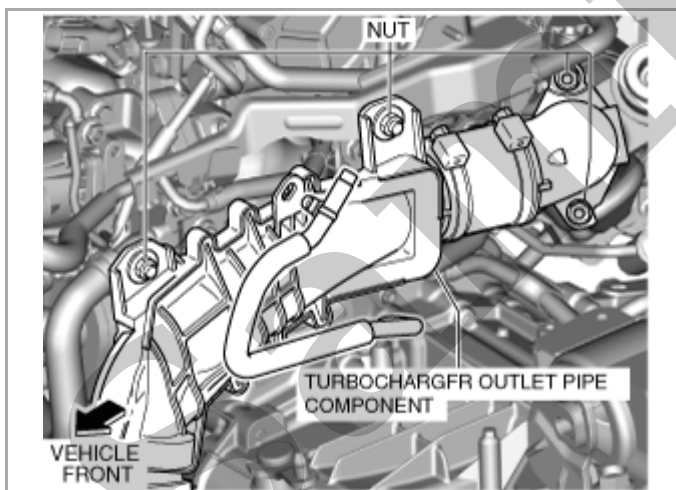
- Air hose
- Air inlet pipe

6. Disconnect the hose clip shown in the figure.



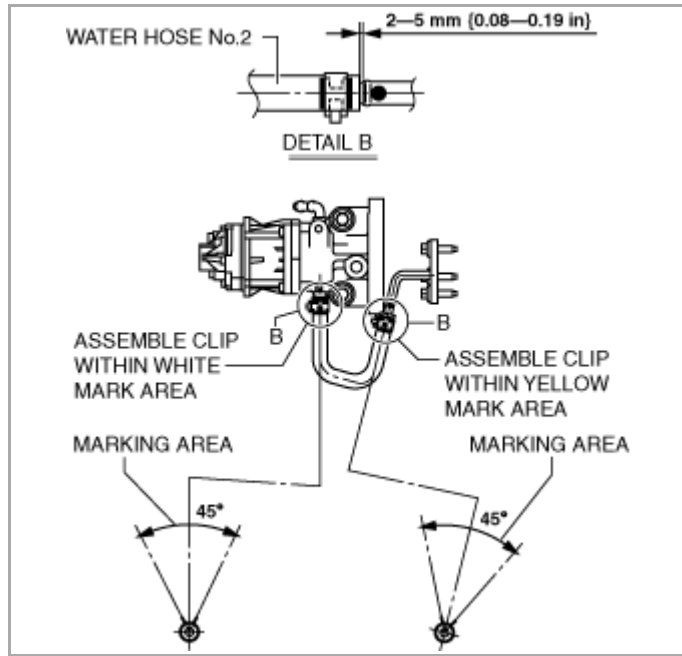
ac5uuw00008334

7. Remove the nuts and set the turbocharger air outlet pipe component aside. (See [INTAKE-AIR SYSTEM REMOVAL/INSTALLATION \[SKYACTIV-D 2.2\].](#))



ac5uuw00008335

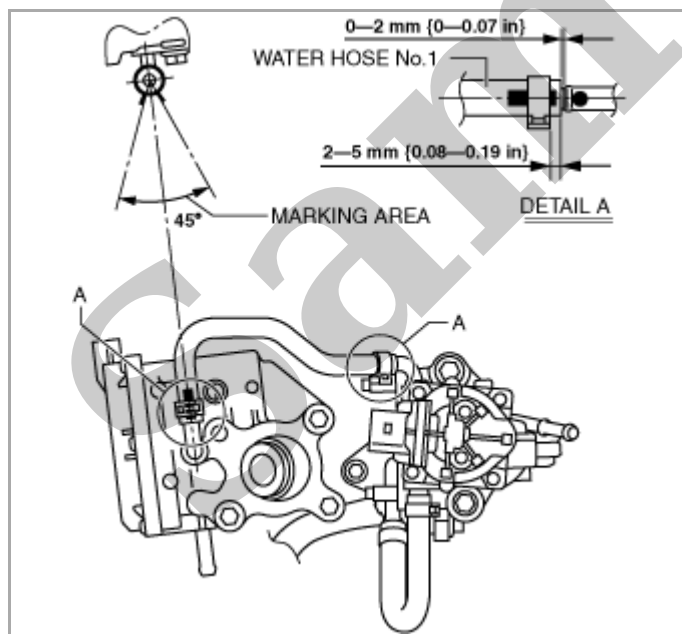
8. Remove the nuts and set the water pipe component aside.



ac5wzw00008665

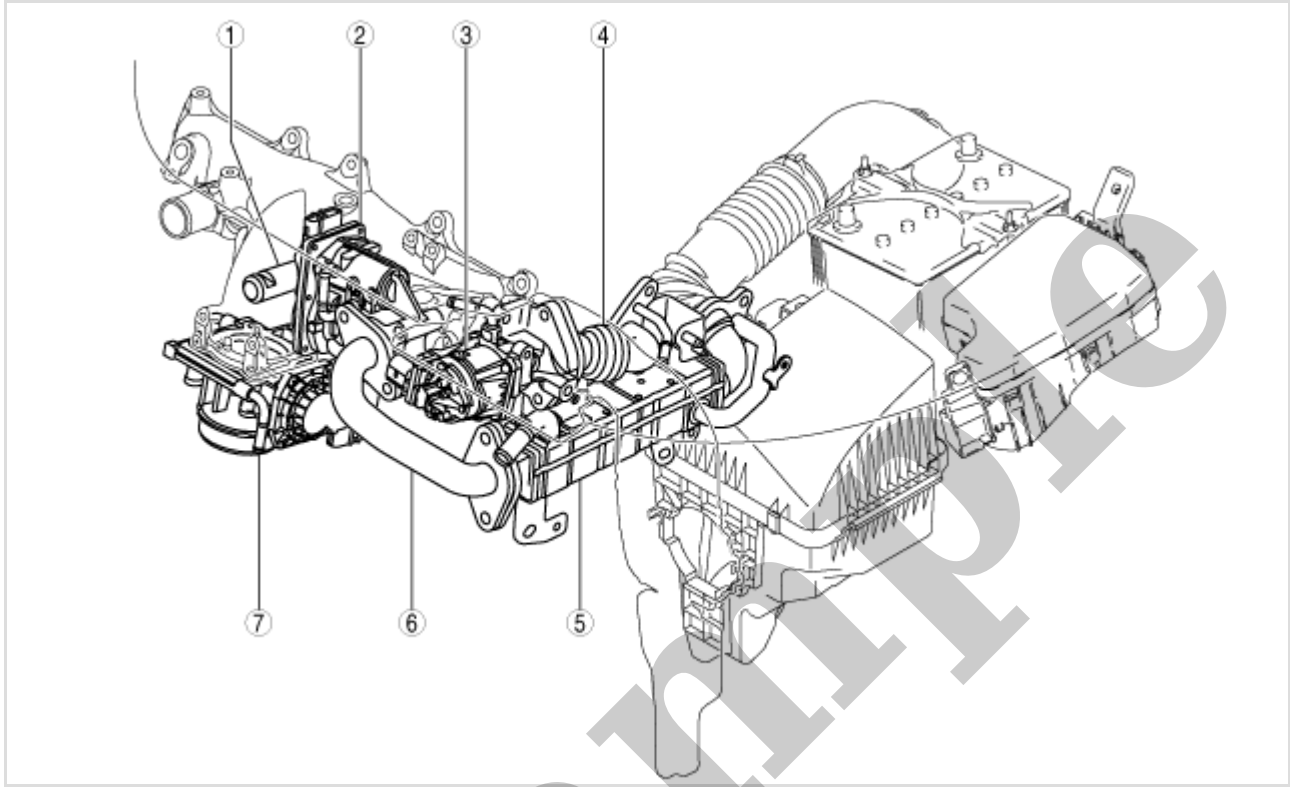
Water hose No.1 installation note

1. Install water hose No.1 as shown in the figure.



ac5wzw00008666

Engine Compartment Side



ac5jjw00003545

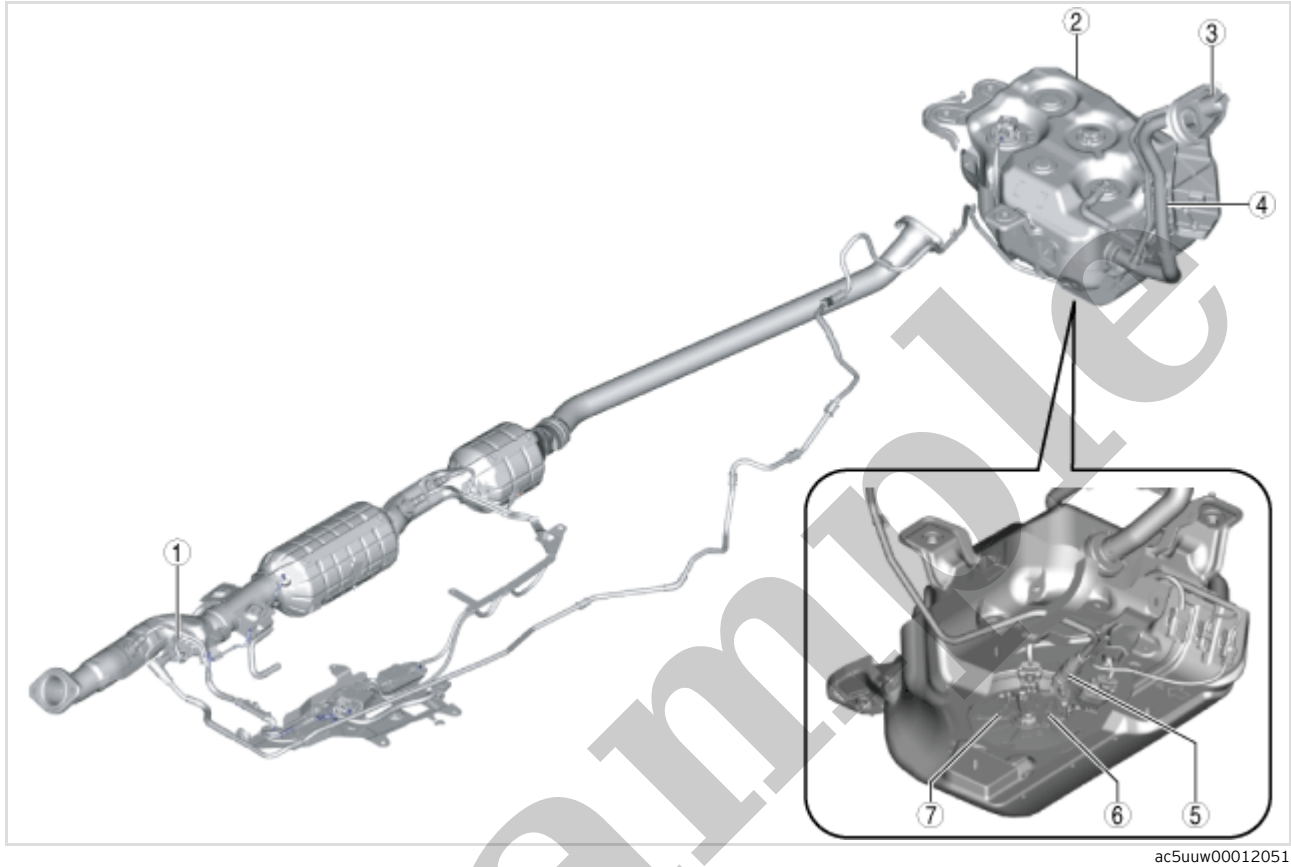
1	EGR pipe (Intake manifold side) (See EGR PIPE REMOVAL/INSTALLATION [SKYACTIV-D 2.2].)
2	EGR valve (See EGR VALVE REMOVAL/INSTALLATION [SKYACTIV-D 2.2].) (See EGR VALVE INSPECTION [SKYACTIV-D 2.2].)
3	EGR cooler bypass valve (See EGR COOLER BYPASS VALVE REMOVAL/INSTALLATION [SKYACTIV-D 2.2].) (See EGR COOLER BYPASS VALVE INSPECTION [SKYACTIV-D 2.2].)
4	EGR pipe (EGR cooler bypass valve side) (See EGR PIPE REMOVAL/INSTALLATION [SKYACTIV-D 2.2].)
5	EGR cooler (See EGR COOLER REMOVAL/INSTALLATION [SKYACTIV-D 2.2].) (See EGR COOLER INSPECTION [SKYACTIV-D 2.2].)
6	EGR pipe (EGR valve side) (See EGR PIPE REMOVAL/INSTALLATION [SKYACTIV-D 2.2].)
7	Intake shutter valve (See INTAKE SHUTTER VALVE REMOVAL/INSTALLATION [SKYACTIV-D 2.2].) (See INTAKE SHUTTER VALVE INSPECTION [SKYACTIV-D 2.2].)

Exhaust System Side

2	Check valve (See CHECK VALVE REMOVAL/INSTALLATION [SKYACTIV-D 2.2].) (See CHECK VALVE INSPECTION [SKYACTIV-D 2.2].)
3	Fuel-filler cap (See FUEL-FILLER PIPE REMOVAL/INSTALLATION [SKYACTIV-D 2.2].)

SCR System Side

2WD

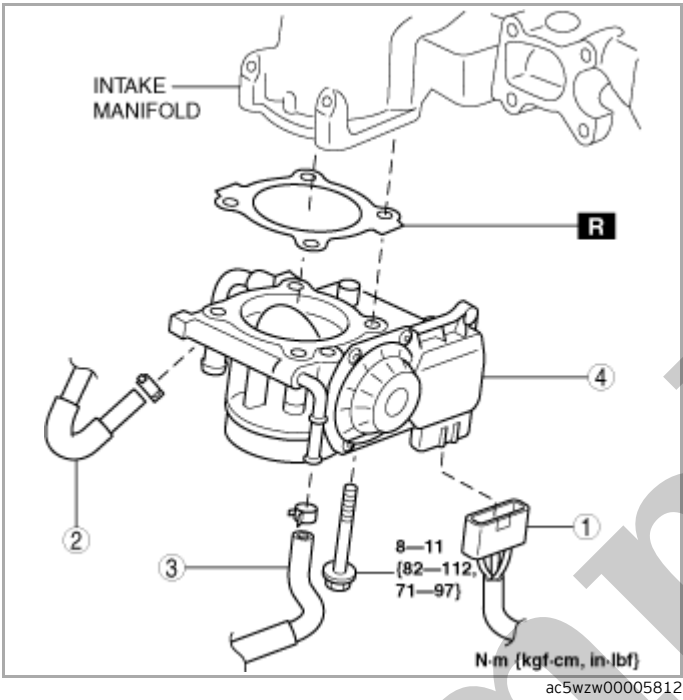


1	Urea injector (See UREA INJECTOR REMOVAL/INSTALLATION [SKYACTIV-D 2.2].)
2	Urea tank (See UREA TANK REMOVAL/INSTALLATION [SKYACTIV-D 2.2].)
3	Urea-filler cap (See UREA-FILLER PIPE REMOVAL/INSTALLATION [SKYACTIV-D 2.2].)
4	Urea-filler pipe (See UREA-FILLER PIPE REMOVAL/INSTALLATION [SKYACTIV-D 2.2].)
5	Urea hose (built in urea hose heater) (See QUICK RELEASE CONNECTOR (EMISSION SYSTEM) REMOVAL/INSTALLATION [SKYACTIV-D 2.2].)
6	DEF pump (See DEF PUMP REMOVAL/INSTALLATION [SKYACTIV-D 2.2].)
7	Urea tank heater (See UREA TANK HEATER INSPECTION [SKYACTIV-D 2.2].)

SCR System Side

AWD

- 3.Remove the charge air cooler outlet hose. (See [INTAKE-AIR SYSTEM REMOVAL/INSTALLATION \[SKYACTIV-D 2.2\].](#))
- 4.Remove the cooling system cap.
- 5.Remove in the order shown in the figure.

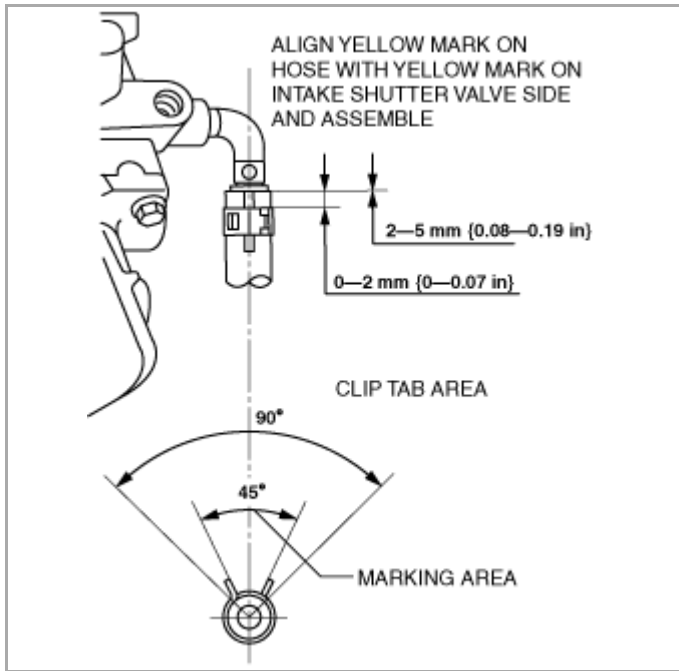


1	Intake shutter valve connector
2	Water hose No.1 (See Water hose No.1 removal note.) (See Water hose No.1 installation note.)
3	Water hose No.2 (See Water hose No.2 removal note.) (See Water hose No.2 installation note.)
4	Intake shutter valve (See Operation After Replacing Intake Shutter Valve.)

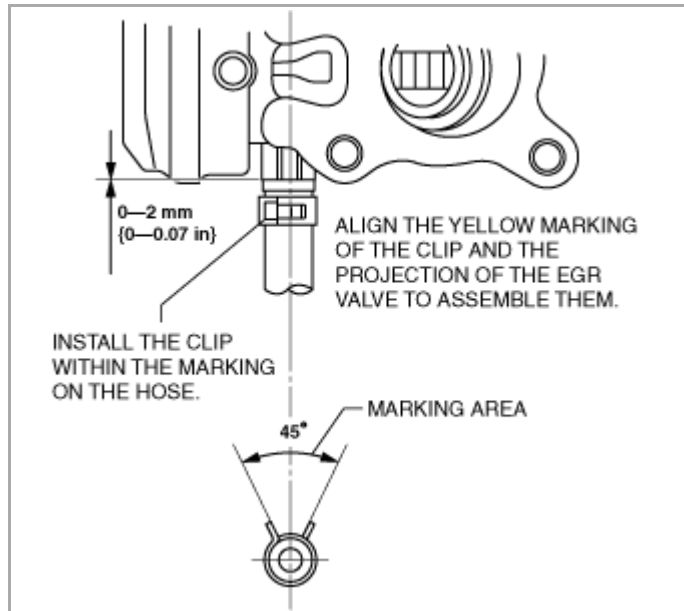
- 6.Install in the reverse order of removal.
- 7.Refill the engine coolant. (See [ENGINE COOLANT REPLACEMENT \[SKYACTIV-D 2.2\].](#))

Water hose No.1 removal note

- 1.Disconnect the water hose No.1 from the intake shutter valve and plug the water hose No.1 quickly.



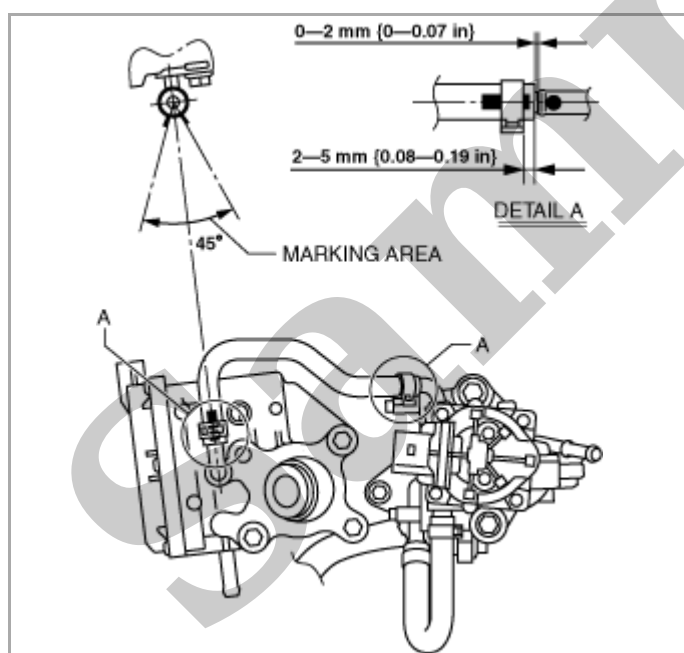
ac5wzw00005814



ac5wzw00005738

Water Hose No.1 Installation Note

1. Install water hose No.1 as shown in the figure.



ac5wzw00005739

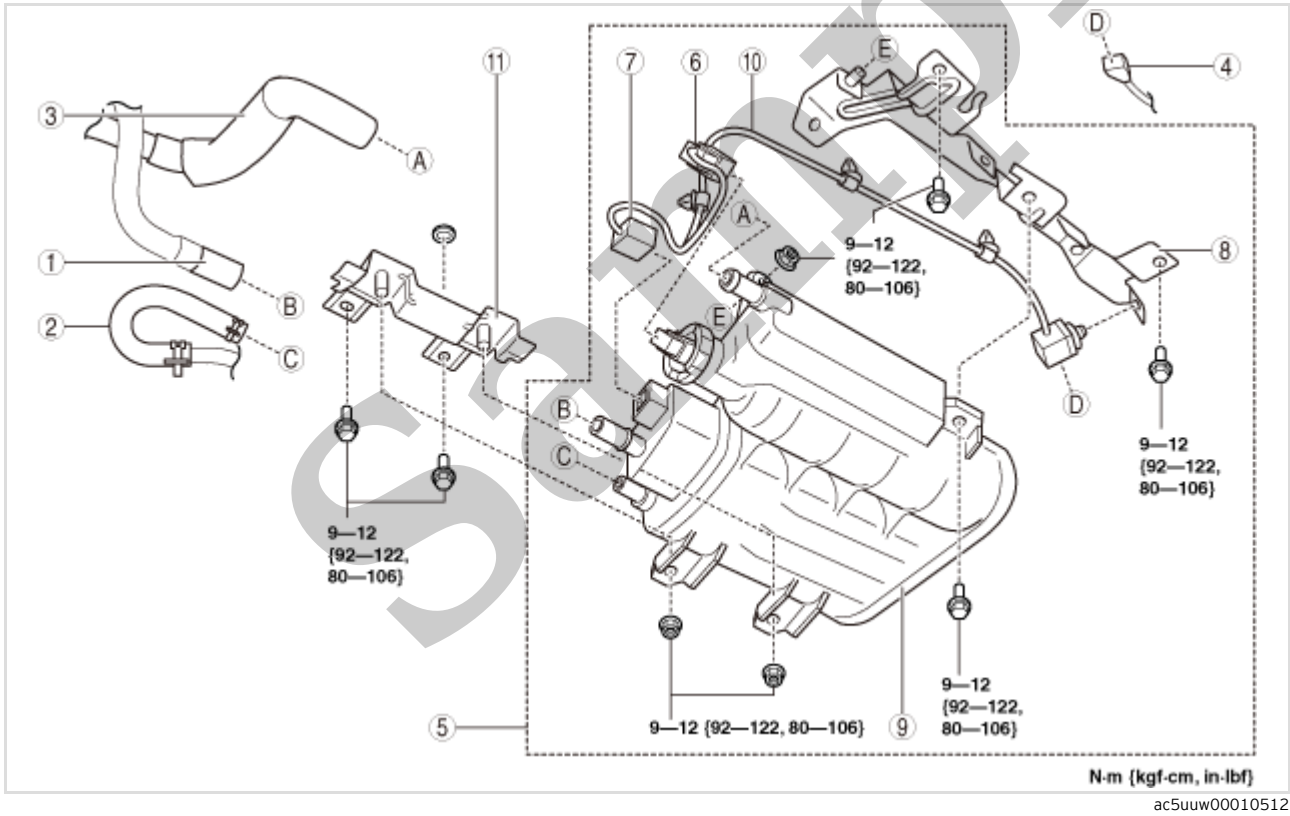
CHARCOAL CANISTER REMOVAL/INSTALLATION [SKYACTIV-G 2.5T]

SM2897564

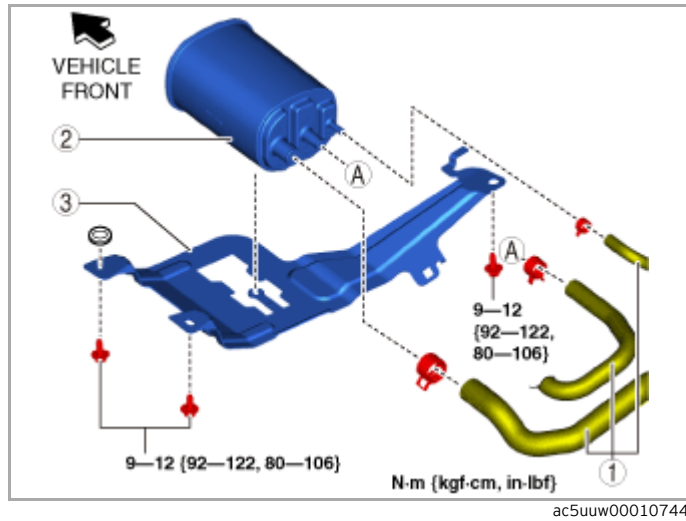
id0116q409640

U.S.A., Canada and Israel

- 1.Disconnect the negative battery terminal. (See [NEGATIVE BATTERY TERMINAL DISCONNECTION/CONNECTION.](#))
- 2.Remove the floor under cover No.2 (LH). (See [FLOOR UNDER COVER REMOVAL/INSTALLATION.](#))
- 3.Remove in the order indicated in the table.
- 4.Install in the reverse order of removal.



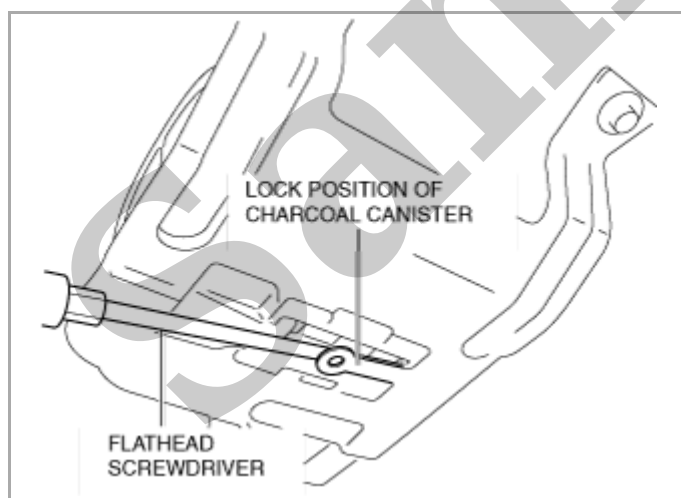
1	Quick release connector (See QUICK RELEASE CONNECTOR (EMISSION SYSTEM) REMOVAL/INSTALLATION [SKYACTIV-G 2.5T].)
2	Evaporative hose No.1 (See Evaporative hose No.1 installation note.)
3	Evaporative hose No.2 (See Evaporative hose No.2 installation note.)
4	Middle harness connector
5	Charcoal canister component (See Charcoal canister component installation note.)
6	CV solenoid valve connector



1	Evaporative hose (See Evaporative hose installation note.)
2	Charcoal canister (See Charcoal canister removal note.)
3	Charcoal canister bracket (See Charcoal canister bracket installation note.)

Charcoal canister removal note

1.Release the lock as shown in the figure.



2.Remove the charcoal canister.

Charcoal canister bracket installation note

1.Hook charcoal canister bracket to the vehicle body.