

Your Ultimate Source for OEM Repair Manuals

FactoryManuals.net is a great resource for anyone who wants to save money on repairs by doing their own work. The manuals provide detailed instructions and diagrams that make it easy to understand how to fix a vehicle.

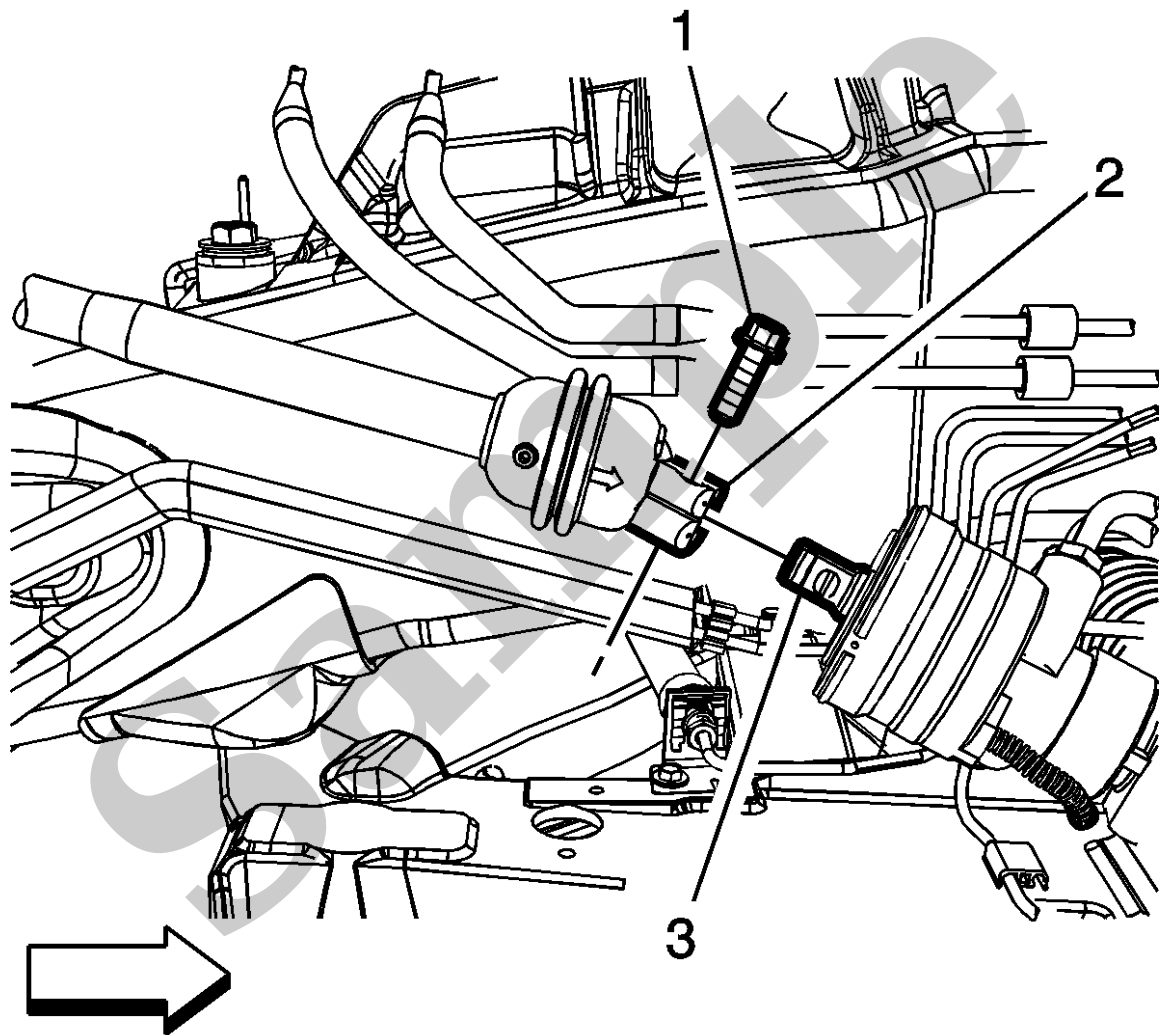
2008 CHEVROLET Celta - 5 doors OEM Service and Repair Workshop Manual

[Go to manual page](#)

- The steering gear

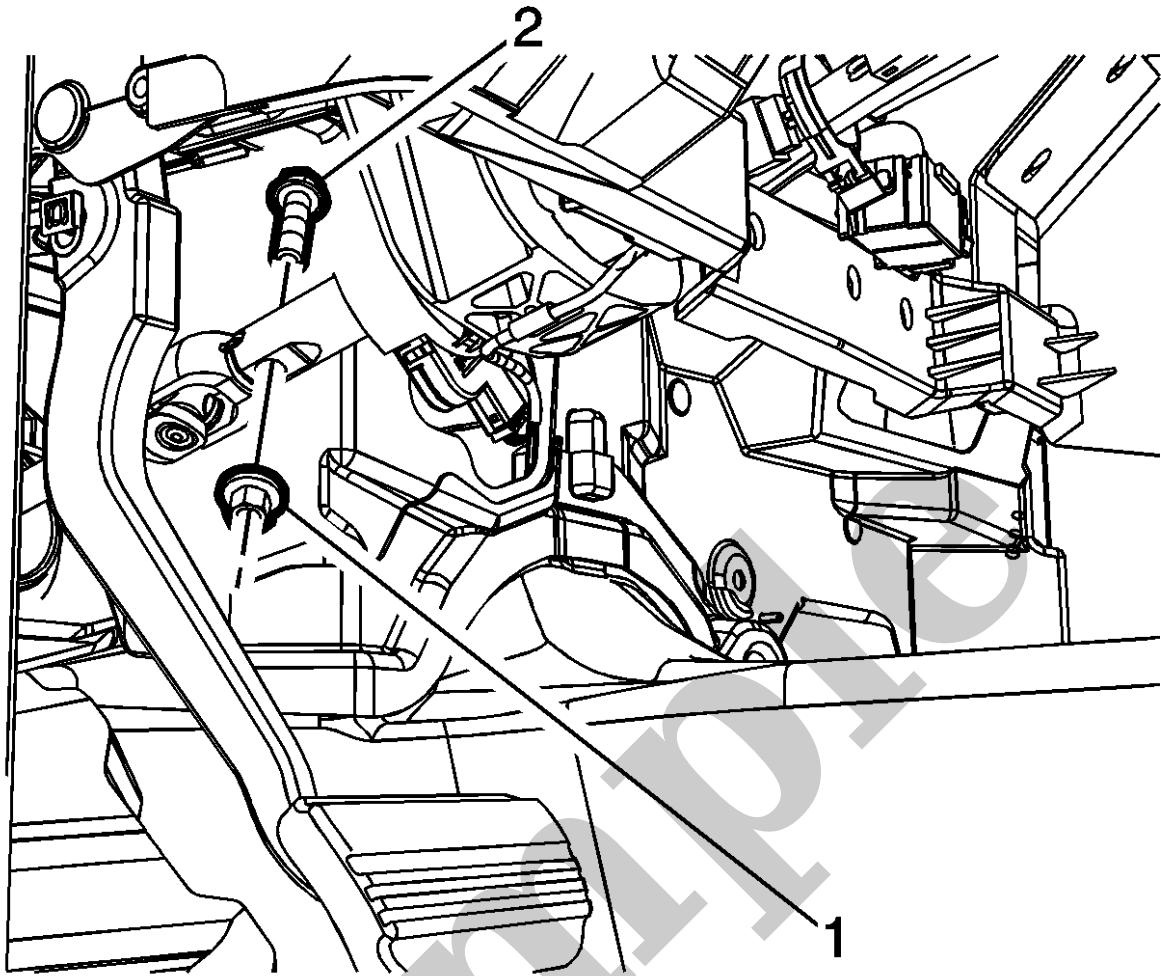
After disconnecting these components, do not rotate the steering wheel or move the front tires and wheels. Failure to follow this procedure may cause the SIR coil assembly to become un-centered and cause possible damage to the SIR coil. If you think the SIR coil has become un-centered, refer to your specific SIR coil's centering procedure to re-center SIR Coil.

Straighten the front wheels of the vehicle to the straight ahead position and use the **CH-42640 anti-rotation pin** to lock the steering column.



6.

Intermediate Steering Shaft(2)@Steering Gear(3) »Separate



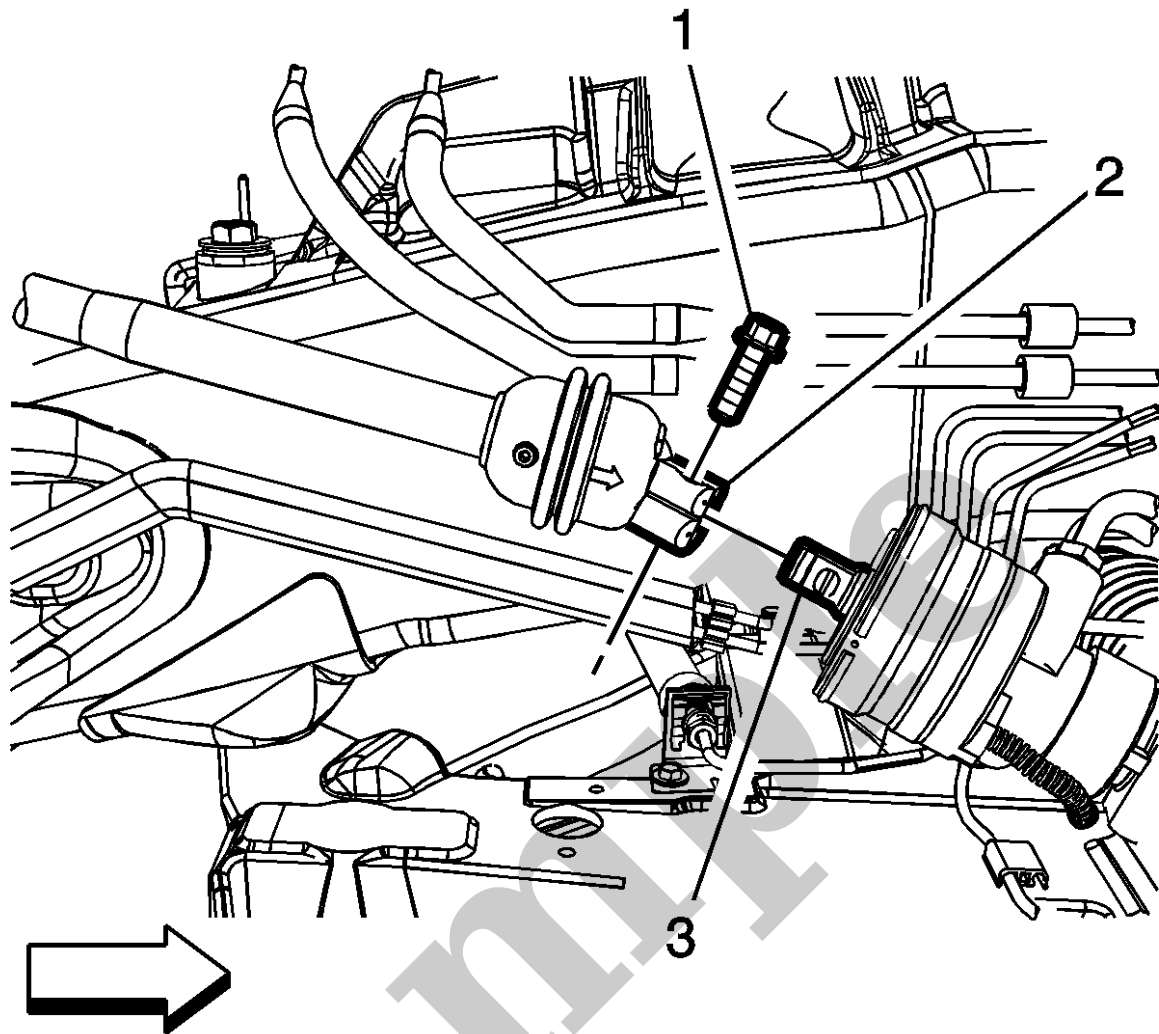
3. Intermediate Steering Shaft Upper Bolt(2) »Install
4. Intermediate Steering Shaft Upper Nut (1) »Install

5. **CAUTION**

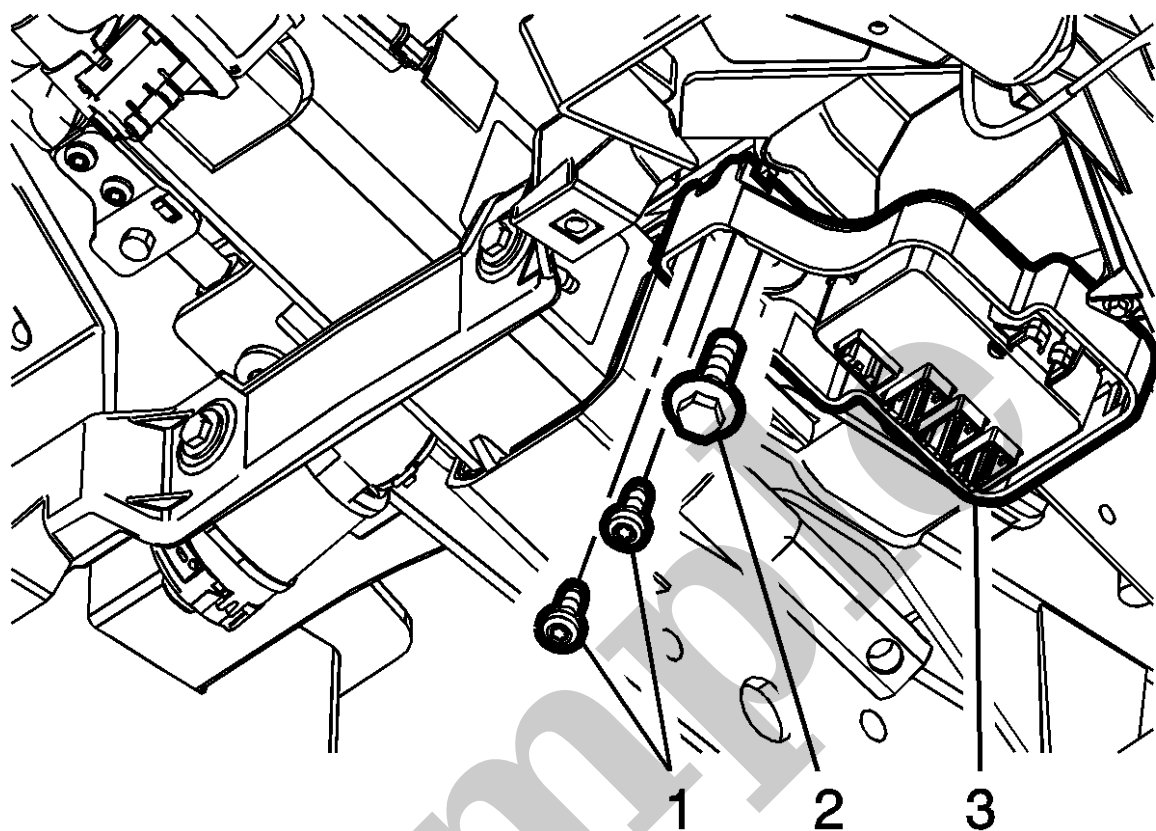
Caution

Refer to [Fastener Caution](#).

Intermediate Steering Shaft Upper Bolt(2) »Tighten **50 N·m (37 lb ft)**



8. Turn the steering wheel to the left as necessary to install the intermediate steering shaft lower bolt (1).
9. Intermediate Steering Shaft Lower Bolt(1) »Install and tighten **50 N·m (37 lb ft)**
10. Instrument Panel Knee Bolster »Install— [Instrument Panel Knee Bolster Replacement](#)
11. Install the Power Vacuum Brake Booster. [Power Vacuum Brake Booster Replacement](#)



5. Steering Column Control Module Bracket Bolt (1) »Remove[2x]
6. Steering Column Bracket Bolt (2) »Remove
7. Steering Column Control Module Bracket (3) »Remove
8. Transfer components as necessary.

Installation Procedure