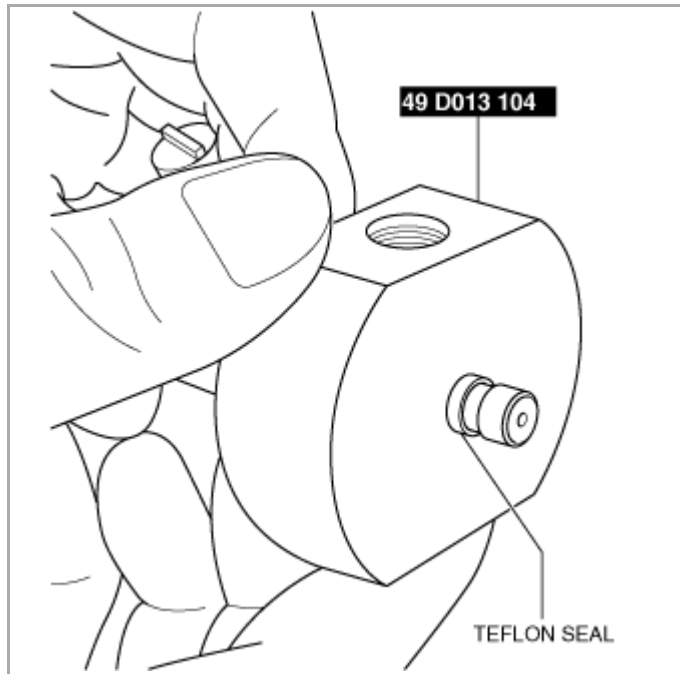


Your Ultimate Source for OEM Repair Manuals

FactoryManuals.net is a great resource for anyone who wants to save money on repairs by doing their own work. The manuals provide detailed instructions and diagrams that make it easy to understand how to fix a vehicle.

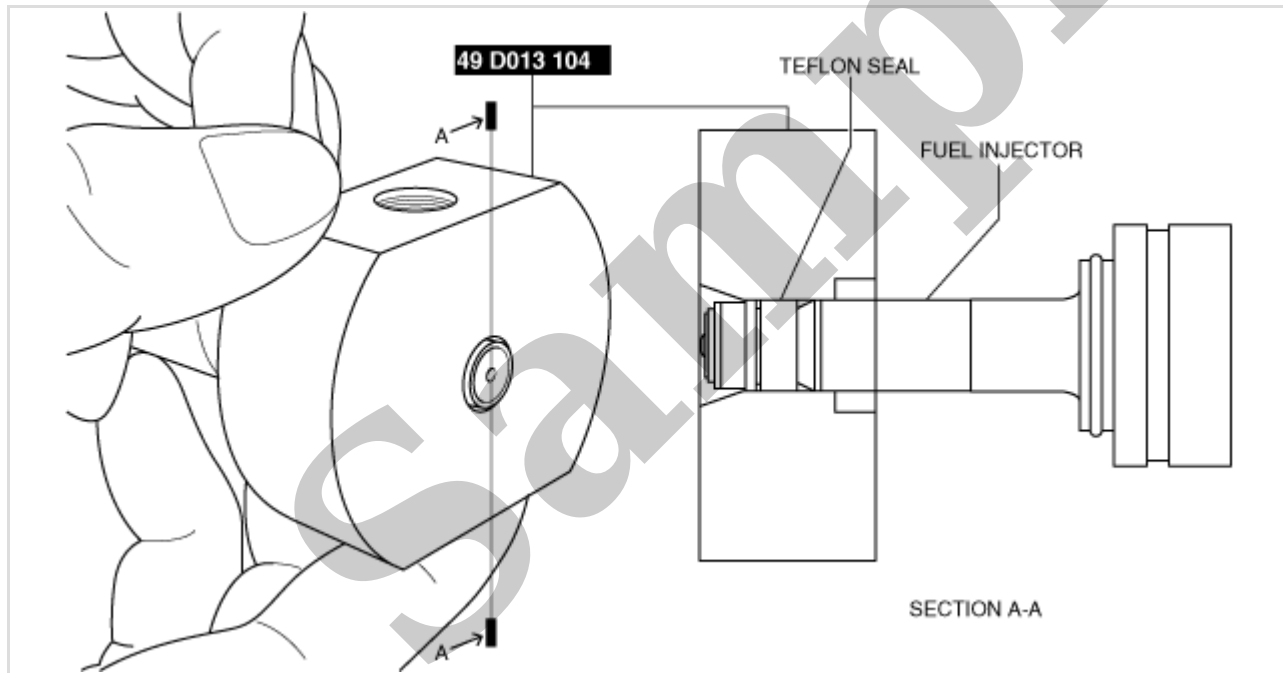
2007 MAZDA CX-7 OEM Service and Repair Workshop Manual

[Go to manual page](#)



am3uuw00007282

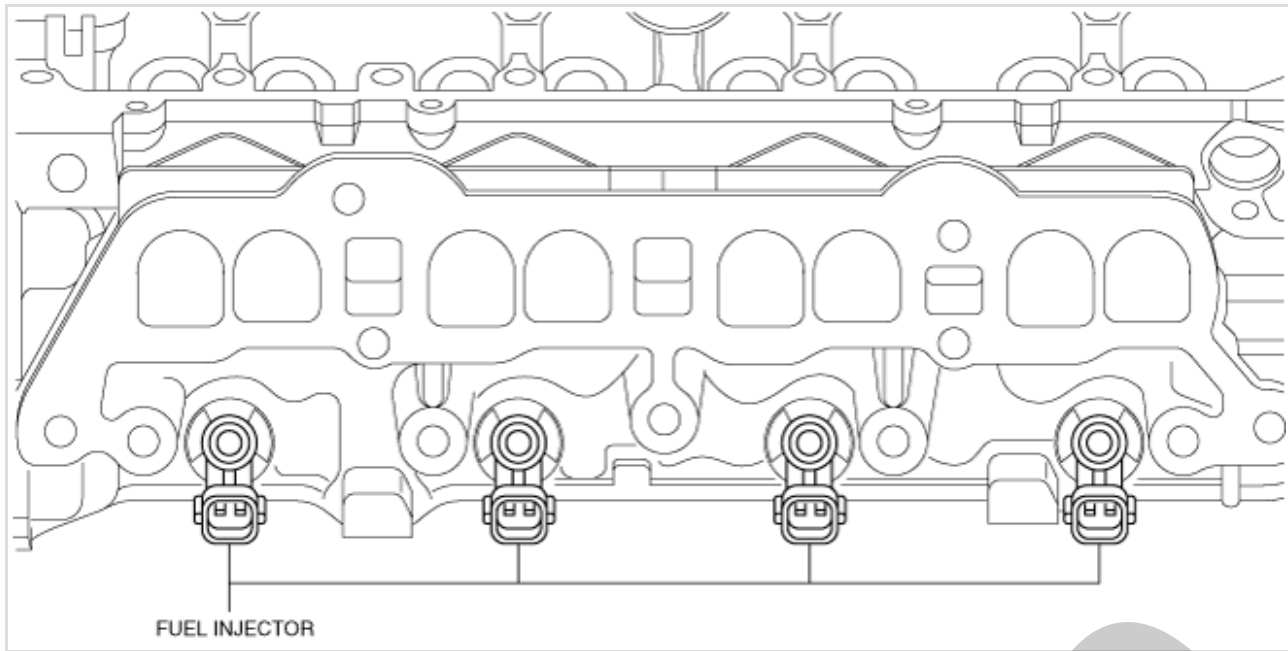
9. Hold the SST at the position shown in the figure and correctly position the teflon seal for more than 30 sec.



am3uuw00007283

Back-up Ring Installation Note

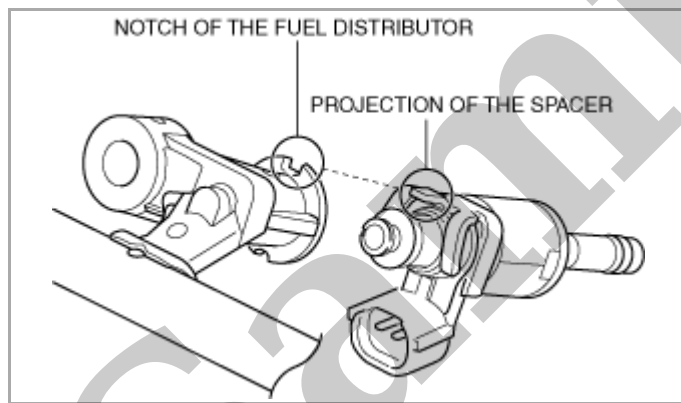
1. Install the back-up ring, making sure it is installed in the right direction.



am3uuw00007285

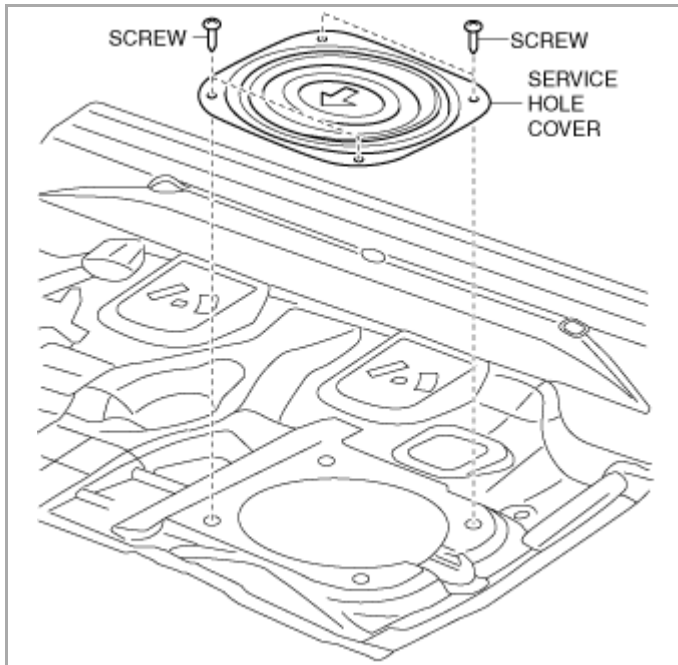
Fuel Distributor Installation Note

1. Install the fuel distributor to the fuel injectors while aligning the projection of the spacer to the notch of the fuel distributor.



ac5uuw00002665

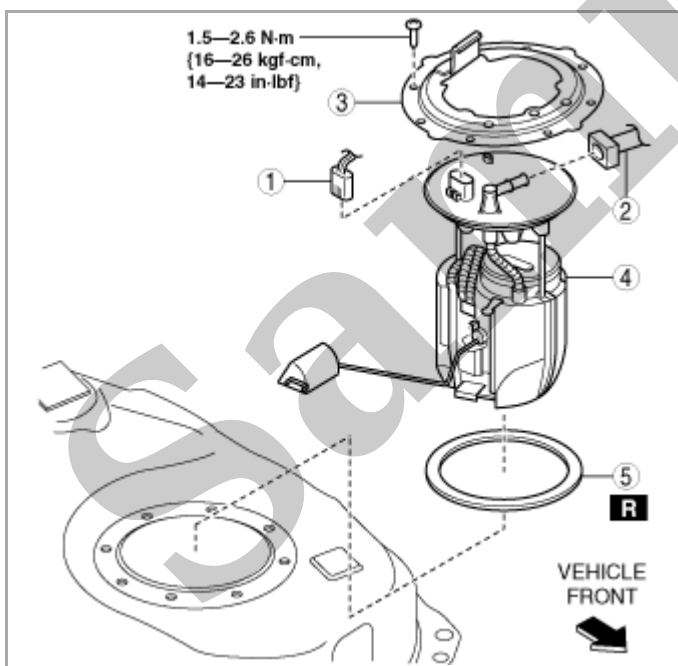
2. Temporarily tighten the fuel distributor installation bolts until their heads contact the fuel distributors.
3. Turn the fuel distributor installation bolts a half a turn in the order shown in the figure.



ac5uuw00000382

5.Remove in the order indicated in the table.

2WD



ac5uuw00000383

1	Fuel pump unit connector
2	Quick release connector (See QUICK RELEASE CONNECTOR (FUEL SYSTEM) REMOVAL/INSTALLATION [SKYACTIV-G 2.5 (WITH CYLINDER DEACTIVATION)] .)
3	Set plate
4	Fuel pump unit
5	Packing

AWD

5.Disassemble in the order indicated in the table.

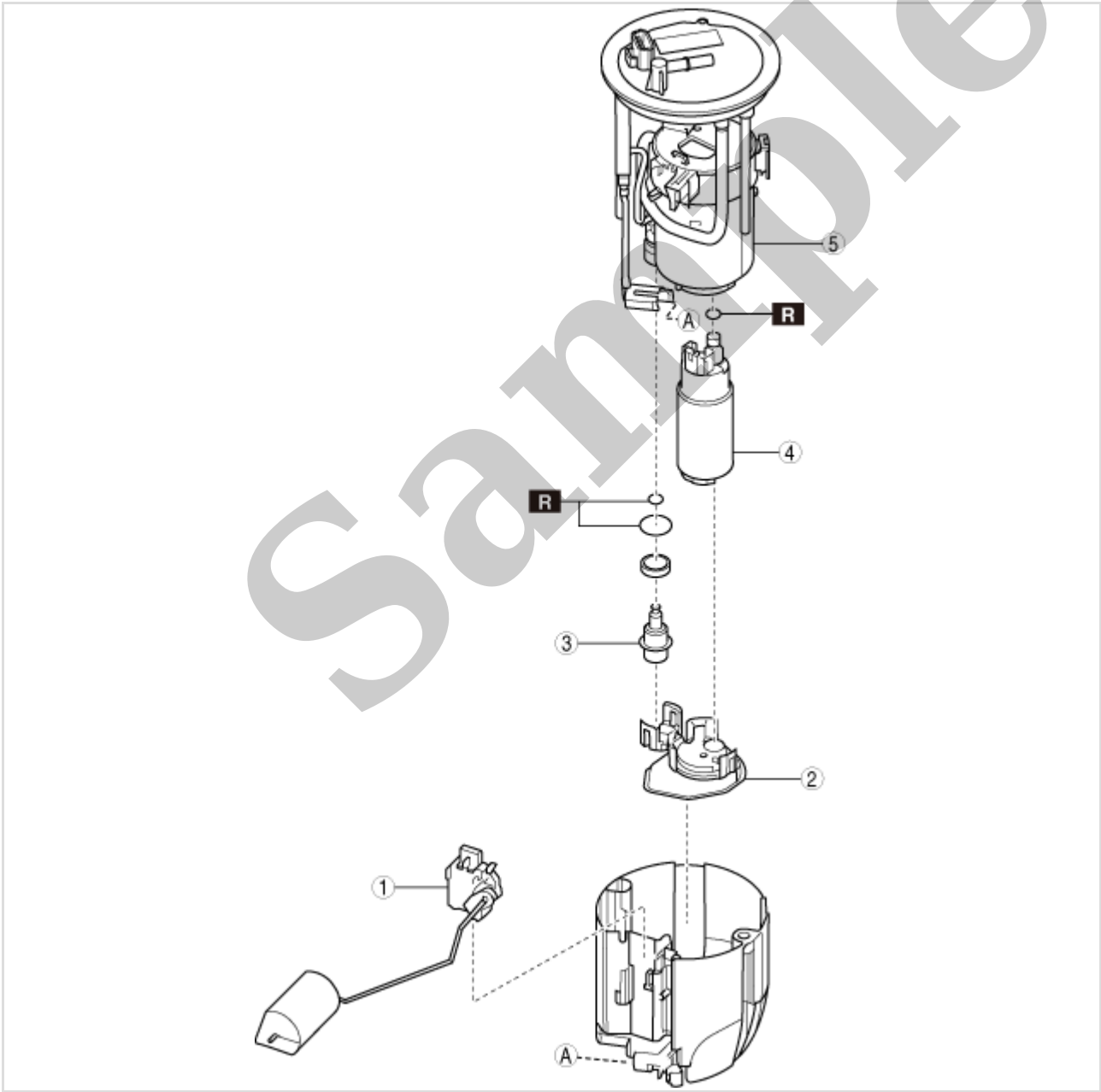
6.Assemble in the reverse order of disassembly.

7.Install in the reverse order of removal.

8.Complete the “AFTER SERVICE PRECAUTION”. (See **AFTER SERVICE PRECAUTION [SKYACTIV-G 2.5 (WITH CYLINDER DEACTIVATION)]**.)

Without EGR cooler

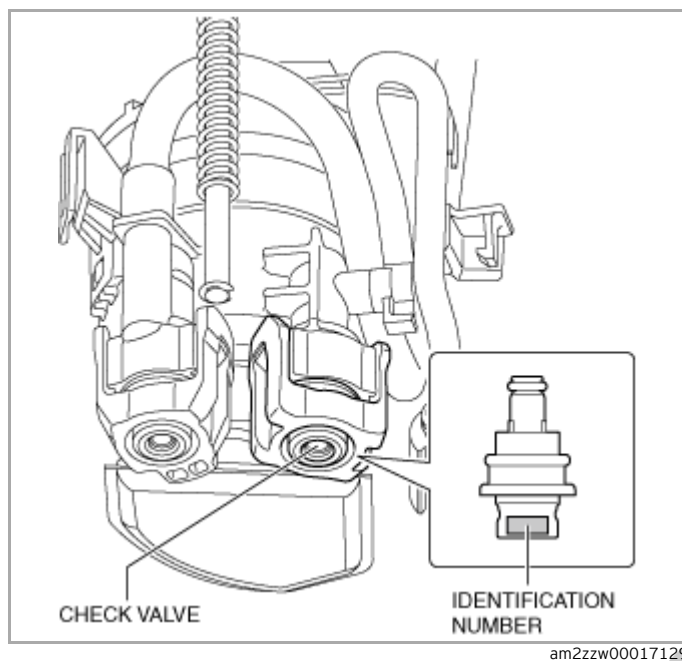
2WD



ac5uuw00006908

1	Fuel gauge sender unit
2	Fuel filter (low-pressure)

Identification number (check valve)



2.Install the check valve.

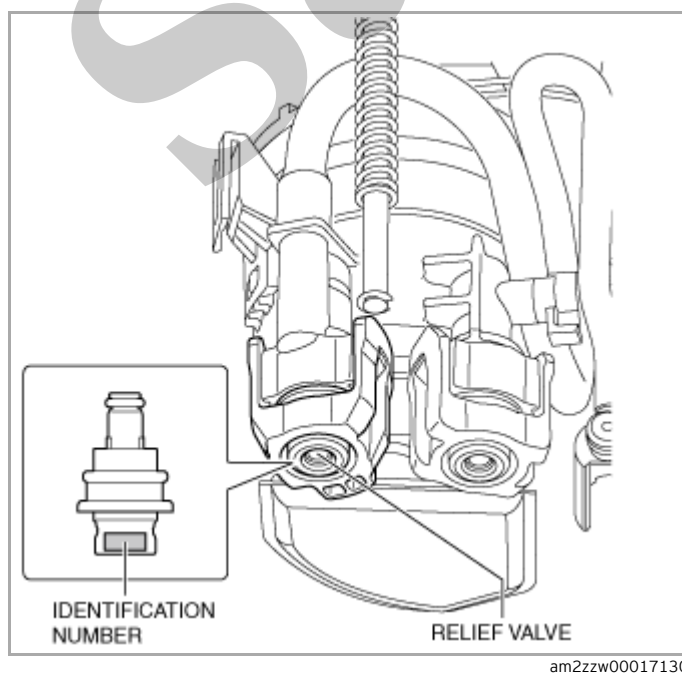
Relief Valve Installation Note

Caution

- When installing the check valve and the relief valve, verify the identification numbers and install them to the correct positions. Otherwise, the engine may stall.

1.Verify that the identification number is for the relief valve.

Identification number (relief valve)



2.Install the relief valve.

HIGH PRESSURE FUEL PUMP REMOVAL/INSTALLATION [SKYACTIV-G (WITHOUT EGR COOLER)]

SM3344922

id0114q78014m

Replacement Part

High pressure fuel pipe	Seal rubber	O-ring
Quantity: 1	Quantity: 1	Quantity: 1
Location of use: High pressure fuel pump	Location of use: High pressure fuel pump	Location of use: High pressure fuel pump
Gasket		
Quantity: 1	-	-
Location of use: Rear housing		

Oil and Chemical Type

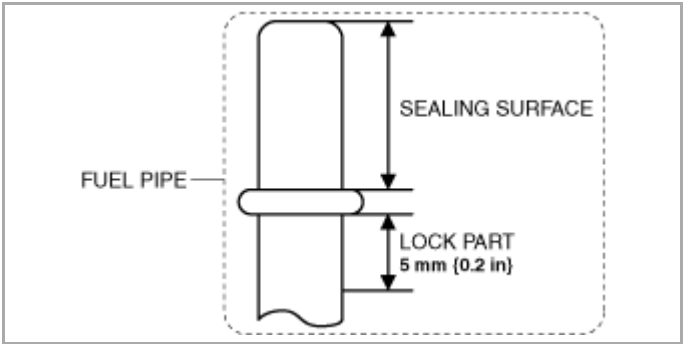
Engine oil	Silicone sealant
Type: Recommended oil	Type: TB1217D or equivalent

Warning

- Highly pressurized fuel may spray out if the fuel line is cut. Due to the following dangers occurring with a fuel spray, always complete the “Fuel Line Safety Procedure” to prevent the fuel from spraying.
 - Fuel may cause irritation if it comes in contact with skin and eyes.
 - If fuel ignites and causes a fire, it may lead to serious injury or death, and damage to property and facilities.
- A person charged with static electricity could cause a fire or explosion, resulting in death or serious injury. Before performing work on the fuel system, discharge static electricity by touching the vehicle body.

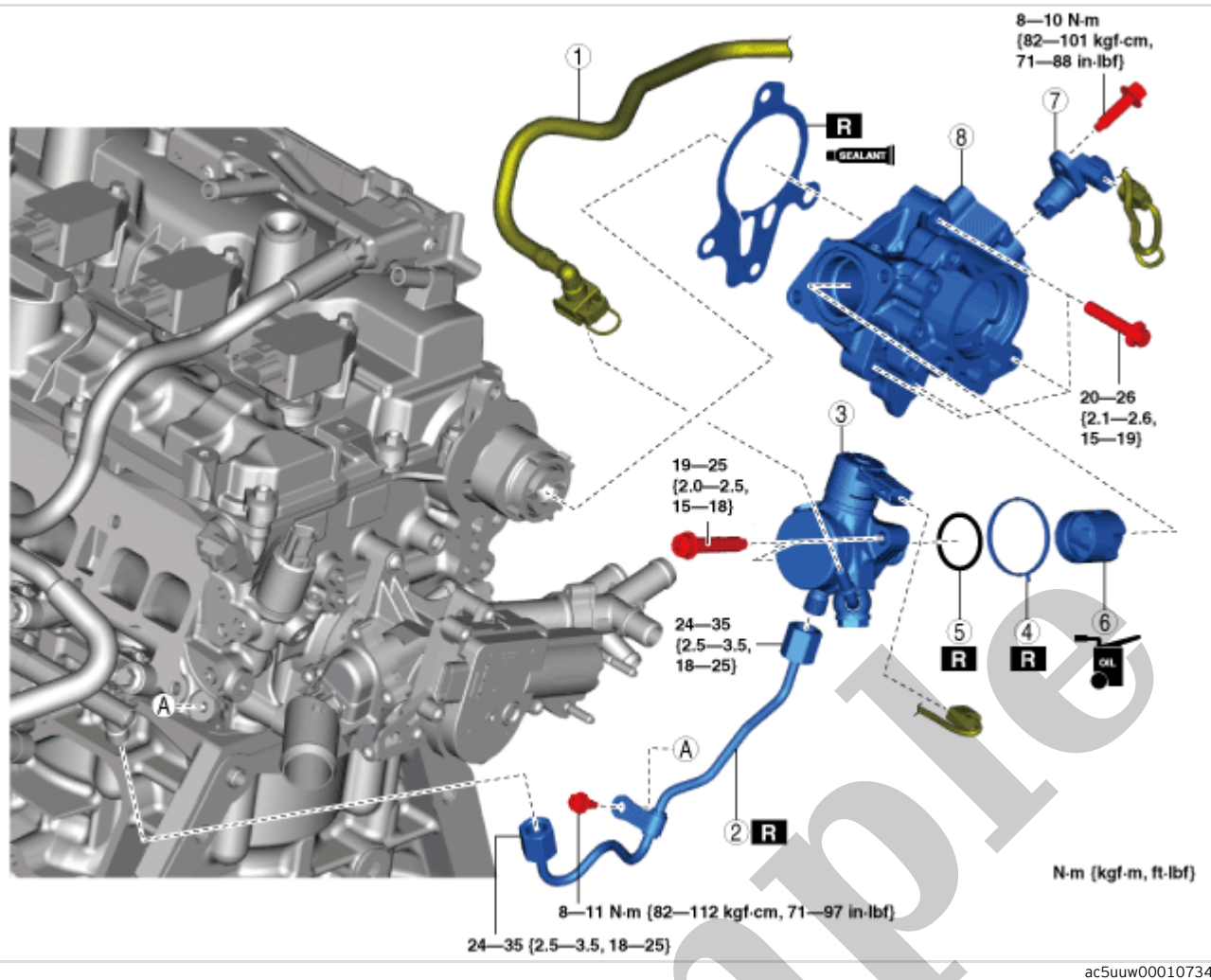
Caution

- Do not disassemble the high pressure fuel pump.
- Do not damage the sealing surface or the lock part of the fuel pipe.



am3uuw00008040

- Damage or deformation to the end of the high pressure line pipe may cause fuel leakage.
- Disconnecting/connecting the quick release connector without cleaning it may cause damage to the fuel pipe and quick release connector. Always clean the quick release connector joint area before disconnecting/connecting using a cloth or soft brush, and make sure that it is free of foreign material.



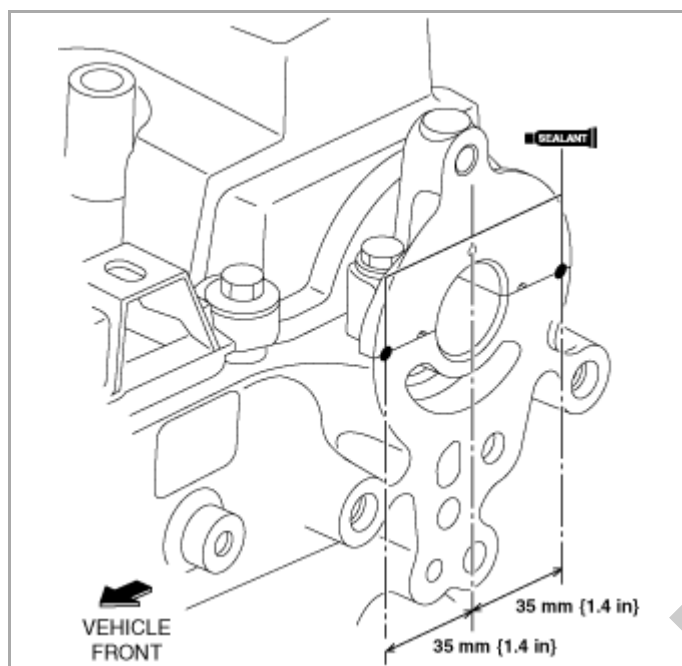
1	Quick release connector (See QUICK RELEASE CONNECTOR (FUEL SYSTEM) REMOVAL/INSTALLATION [SKYACTIV-G 2.5 (WITH CYLINDER DEACTIVATION)] .)
2	High pressure fuel pipe (See High Pressure Fuel Pipe Removal Note .) (See High Pressure Fuel Pipe Installation Note .)
3	High pressure fuel pump (See High Pressure Fuel Pump Installation Note .)
4	Seal rubber
5	O-ring
6	Tension collar
7	Exhaust CMP sensor (See CAMSHAFT POSITION (CMP) SENSOR REMOVAL/INSTALLATION [SKYACTIV-G 2.5 (WITH CYLINDER DEACTIVATION)] .)
8	Rear housing (See Rear Housing Removal Note .) (See Rear Housing Installation Note .)

High Pressure Fuel Pipe Removal Note

Caution

- When removing the high pressure fuel pipe, the end of the high pressure fuel pipe may be damaged because the clearance between the high pressure fuel pump and the high pressure fuel pipe is small. Be very careful when handling the end of the high pressure fuel pipe so as not to damage it.

1. Apply silicone sealant (TB1217D or equivalent) to the areas shown in the figure.



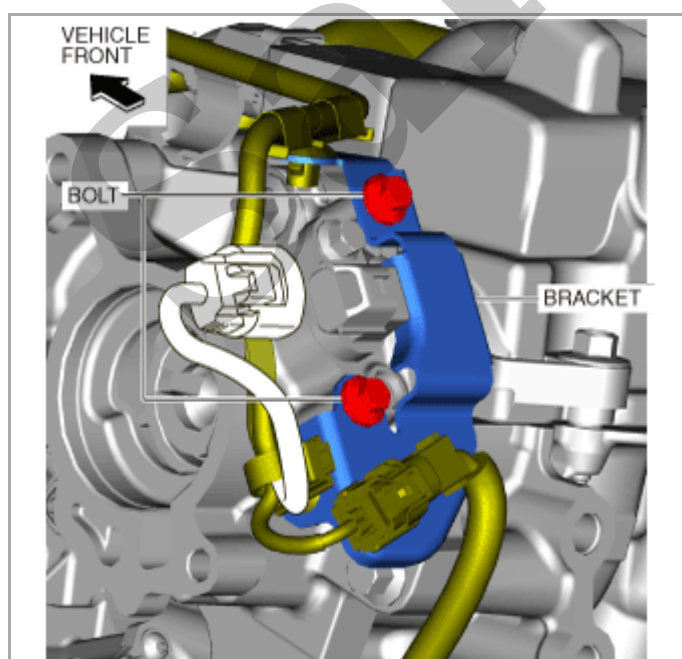
ac5wzw00010628

Thickness

3.0–7.0 mm {0.12–0.27 in}

2. Install the rear housing.

3. Install the bracket shown in the figure.



ac5wzw00010675

Tightening torque

8–11 N·m {82–112 kgf·cm, 71–97 in·lbf}

4. Connect the exhaust CMP sensor connector.

High pressure fuel pipe tightening torque

24–35 N·m {2.5–3.5 kgf·m, 18–25 ft·lbf}

4. Tighten the high pressure fuel pipe bracket installation bolt.

High pressure fuel pipe bracket installation bolt tightening torque

8–11 N·m {82–112 kgf·cm, 71–97 in·lbf}

Fuel Leakage Inspection After High Pressure Fuel Pump Installation

1. Verify that the high pressure fuel pump is assembled securely.
2. Verify that there is no fuel leakage around the high pressure fuel pump.