

Your Ultimate Source for OEM Repair Manuals

FactoryManuals.net is a great resource for anyone who wants to save money on repairs by doing their own work. The manuals provide detailed instructions and diagrams that make it easy to understand how to fix a vehicle.

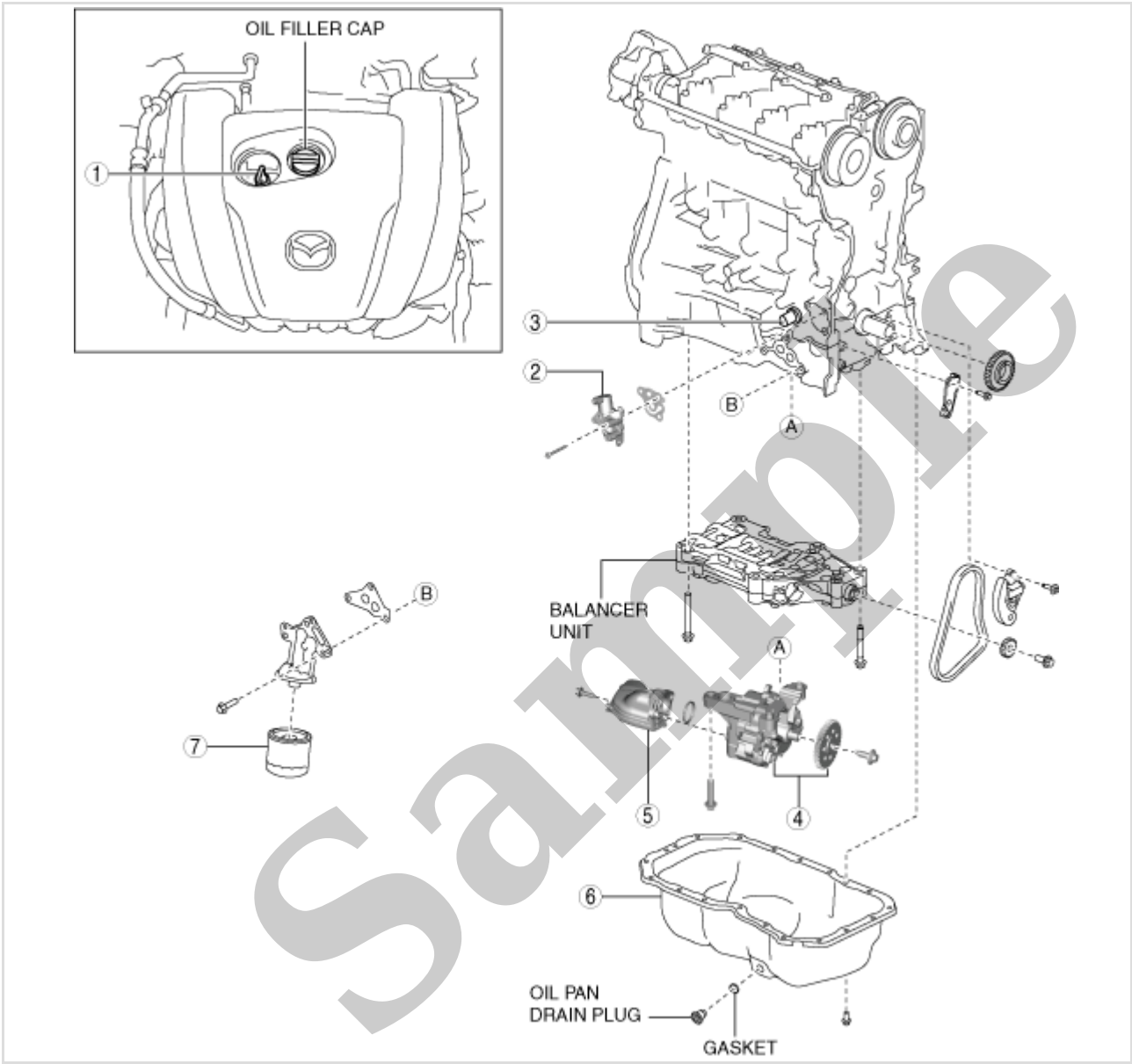
2006 MAZDA 6/Atenza Wagon OEM Service and Repair Workshop Manual

[Go to manual page](#)

LUBRICATION SYSTEM LOCATION INDEX [SKYACTIV-G 2.5 (WITH CYLINDER DEACTIVATION)]

SM2897291

id0111s980010

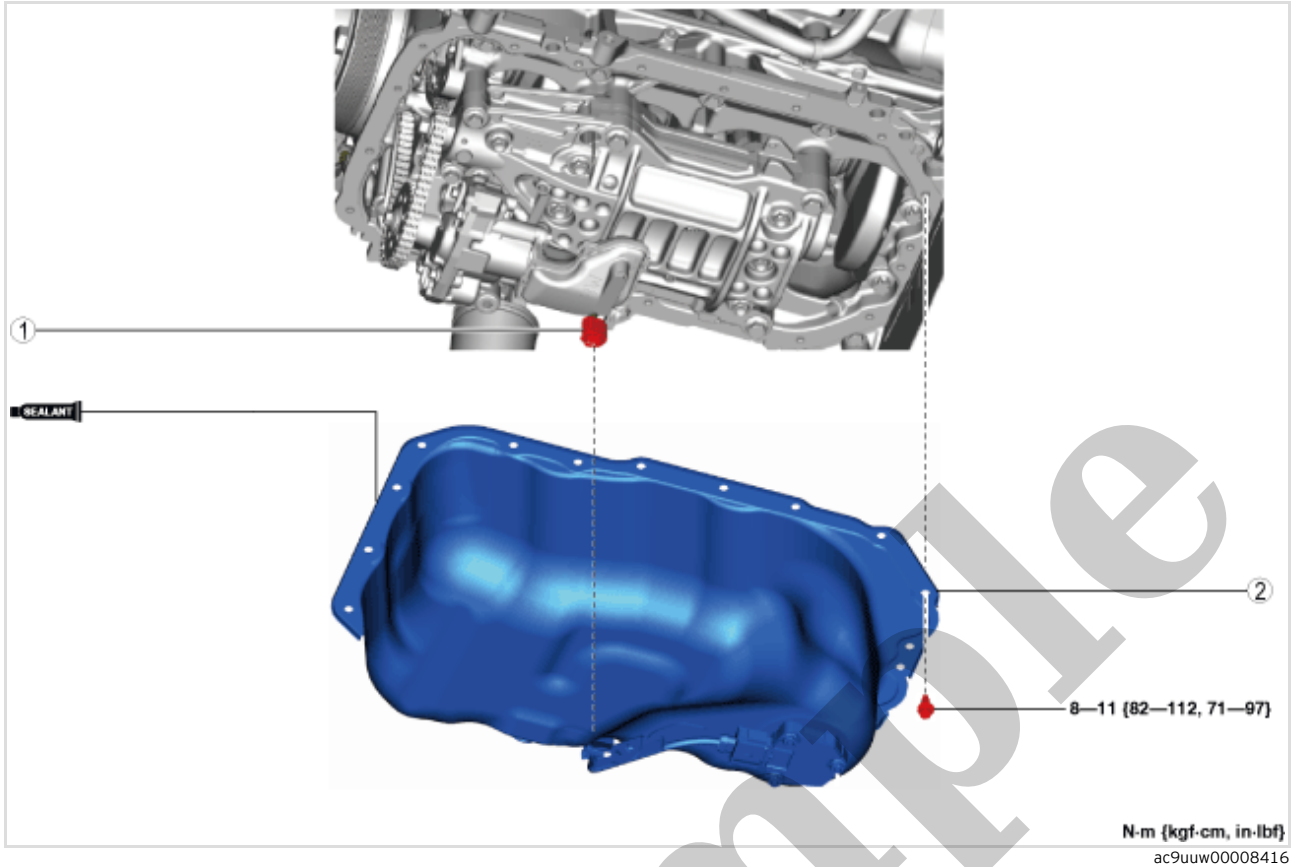


ac5uuw00009312

1	Dipstick (See ENGINE OIL LEVEL INSPECTION [SKYACTIV-G 2.5 (WITH CYLINDER DEACTIVATION)] .) (See ENGINE OIL REPLACEMENT [SKYACTIV-G 2.5 (WITH CYLINDER DEACTIVATION)] .)
2	Engine oil solenoid valve (See ENGINE OIL SOLENOID VALVE REMOVAL/INSTALLATION [SKYACTIV-G 2.5 (WITH CYLINDER DEACTIVATION)] .) (See ENGINE OIL SOLENOID VALVE INSPECTION [SKYACTIV-G 2.5 (WITH CYLINDER DEACTIVATION)] .)
3	Engine oil temperature sensor/engine oil pressure sensor (See OIL PRESSURE INSPECTION [SKYACTIV-G 2.5 (WITH CYLINDER DEACTIVATION)] .)
4	Oil pump component (See OIL PUMP REMOVAL/INSTALLATION [SKYACTIV-G 2.5 (WITH CYLINDER DEACTIVATION)] .)
5	Oil strainer (See OIL PUMP REMOVAL/INSTALLATION [SKYACTIV-G 2.5 (WITH CYLINDER DEACTIVATION)] .)

• If there is oil leakage, repair or replace the applicable part.

10. Inspect the oil level. (See [ENGINE OIL LEVEL INSPECTION \[SKYACTIV-G 2.5 \(WITH CYLINDER DEACTIVATION\)\]](#).)



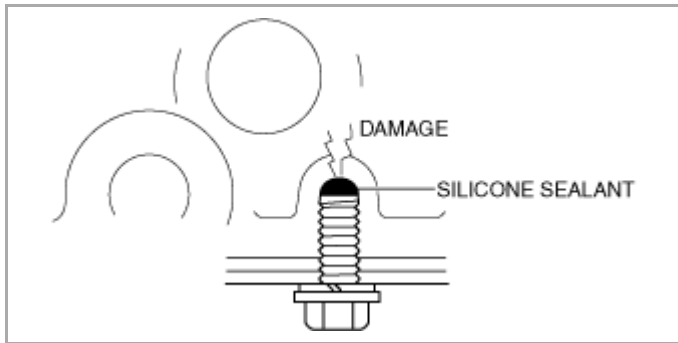
1	Emission wiring harness connector (See Emission Wiring Harness Connector Removal Note .)
2	Oil pan, engine oil level sensor and short-cord component (See Oil Pan Removal Note .) (See Oil Pan Installation Note .)

Emission Wiring Harness Connector Removal Note

Caution

- Cover the emission wiring harness connector and short-cord connector using tape to prevent engine oil from adhering to the connector terminal.

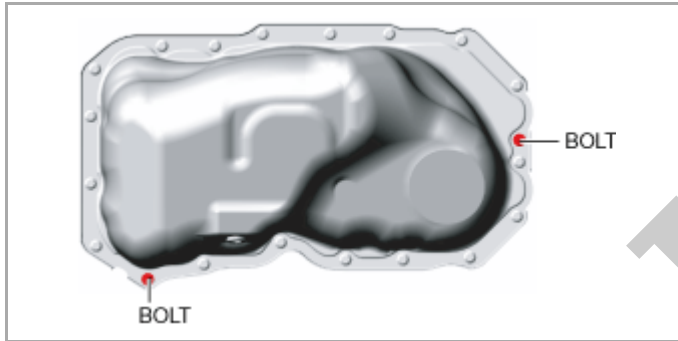
1. Disconnect the emission wiring harness connector.



ac5wzw00007107

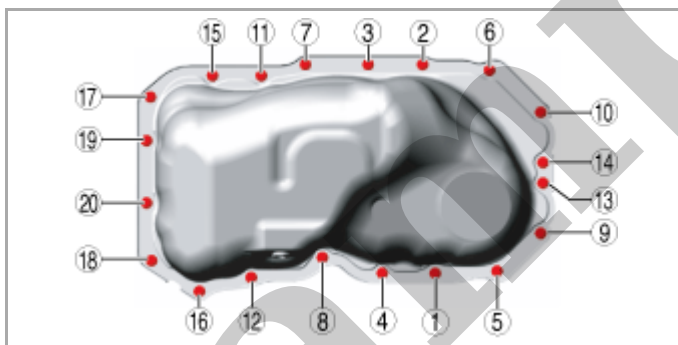
(1) Install the oil pan to the cylinder block.

(2) Temporarily tighten the two bolts shown in the figure.



ac5wzw00010786

(3) Tighten the bolts in the order shown in the figure.

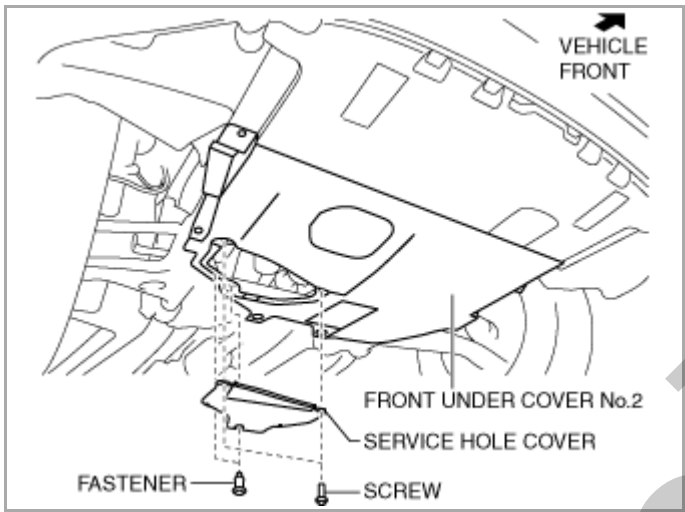


ac5wzw00010787

Tightening torque

8–11 N·m {82–112 kgf·cm, 71–97 in·lbf}

- 3.Stop the engine and wait for 5 min or more.
- 4.Remove the oil filler cap.
- 5.Remove the service hole cover (installed to front under cover No.2) used to drain the engine oil.



ac5uuw00007328

- 6.Remove the oil pan drain plug.
- 7.Drain the engine oil into a container.
- 8.Wait until the engine oil starts to drip.
- 9.Install the oil pan drain plug with a new gasket.

Oil pan drain plug tightening torque

30–41 N·m {3.1–4.1 kgf·m, 23–30 ft·lbf}

- 10.Refill with the following type and amount of engine oil.

Engine oil specification

Item		Specifications
Engine oil capacity (approx. quantity)	Oil replacement	4.3 L {4.5 US qt, 3.8 Imp qt}
	Oil and oil filter replacement	4.5 L {4.8 US qt, 4.0 Imp qt}
	Total (dry engine)	5.5 L {5.8 US qt, 4.8 Imp qt}

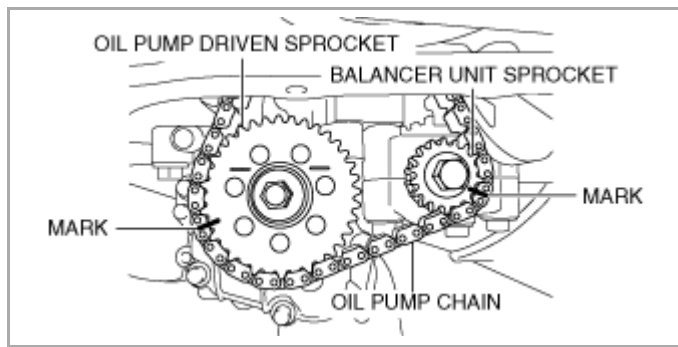
- If the oil level is lower than the MIN mark, add engine oil while verifying the engine oil amount using the dipstick. (See **ENGINE OIL REPLACEMENT [SKYACTIV-G 2.5 (WITH CYLINDER DEACTIVATION)]**.)

- If the oil level is above the MAX mark, penetration of fuel into the engine oil can be considered. Replace the engine oil. (See **ENGINE OIL REPLACEMENT [SKYACTIV-G 2.5 (WITH CYLINDER DEACTIVATION)]**.)

6. Insert the dipstick completely until it attaches to the cylinder head cover.

Sample

- Balancer unit sprocket

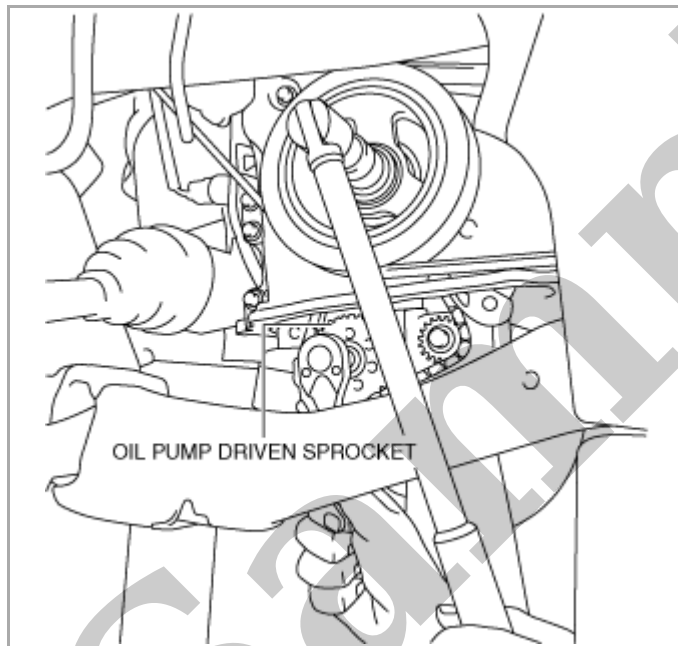


ac5uuw00004794

Note

- The marks will be used as alignment marks when installing the oil pump driven sprocket.

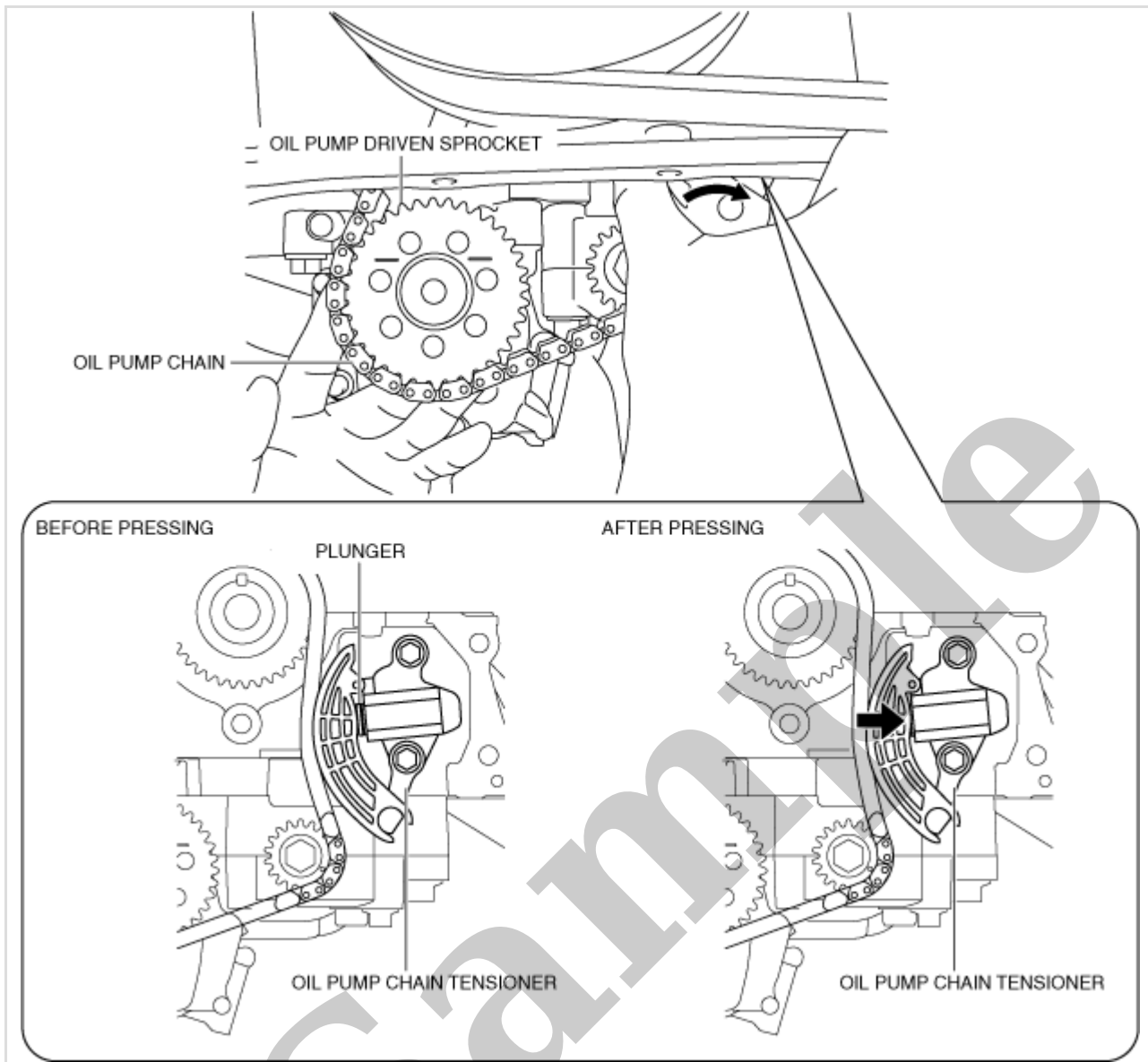
2. While locking the oil pump against rotation as shown in the figure, remove the oil pump driven sprocket installation bolt.



ac5uuw00004795

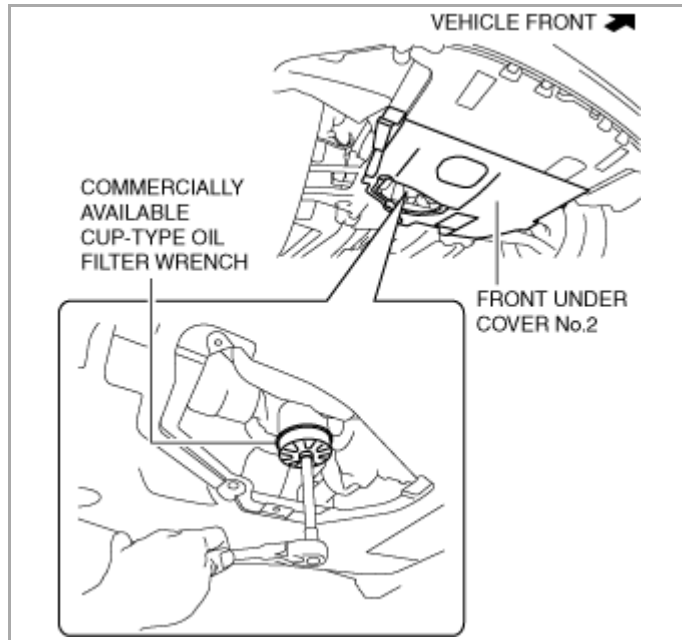
3. While pressing the oil pump chain in the direction of the arrow shown in the figure, remove the oil pump driven sprocket.

2.While pressing the oil pump chain in the direction of the arrow shown in the figure, install the oil pump driven sprocket.



ac5wzw00010801

3.While locking the oil pump against rotation as shown in the figure, tighten the oil pump driven sprocket installation bolt.



3. Use a clean rag to wipe off the mounting surface.

4. Apply clean engine oil to the O-ring of a new oil filter.

5. Tighten the oil filter according to the instructions on the package or side of the oil filter.

Tightening torque (reference value)

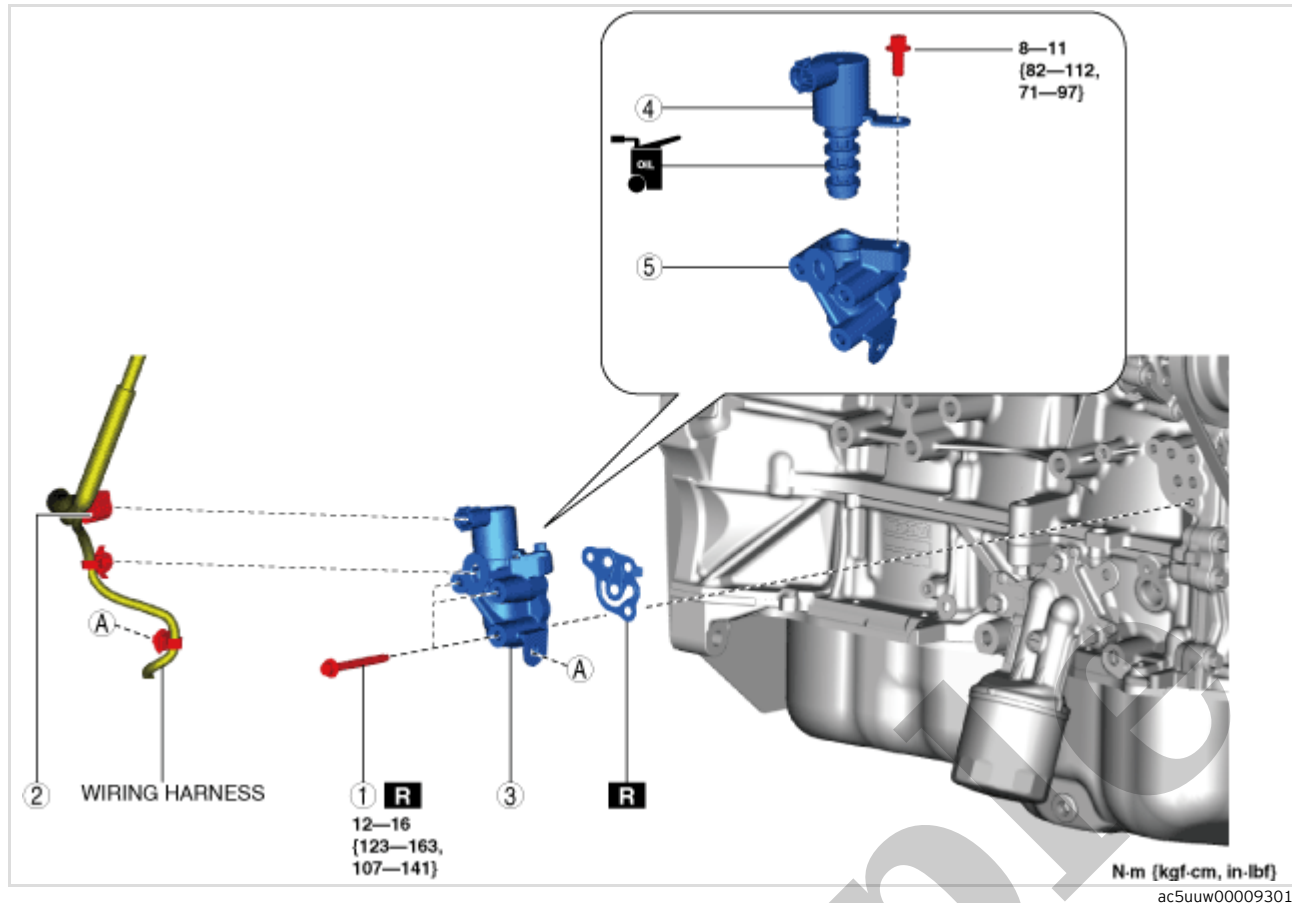
12–16 N·m {123–163 kgf·cm, 107–141 in·lbf}

6. Start the engine and confirm that there is no oil leakage.

- If there is oil leakage, repair or replace the applicable part.

7. Inspect the oil level. (See [ENGINE OIL LEVEL INSPECTION \[SKYACTIV-G 2.5 \(WITH CYLINDER DEACTIVATION\)\]](#).)

8. Install the service hole cover.



1	Bolt
2	Engine oil solenoid valve connector
3	Engine oil solenoid valve component
4	Engine oil solenoid valve (See Engine Oil Solenoid Valve Removal Note .) (See Engine Oil Solenoid Valve Installation Note .)
5	Spacer

Engine Oil Solenoid Valve Removal Note

1. Cover the area around the engine oil solenoid valve with a rag because a small amount of engine oil will leak from the engine oil solenoid valve installation area.

Caution

- Do not let any leaked engine oil contact the adjacent water pump gasket and O-ring of the water inlet pipe. Otherwise, the gasket could swell causing a seal malfunction.

Engine Oil Solenoid Valve Installation Note

1. After tightening the three bolts shown in the figure, tighten the first tightened bolt to the specified tightening torque again.