

# Your Ultimate Source for OEM Repair Manuals

FactoryManuals.net is a great resource for anyone who wants to save money on repairs by doing their own work. The manuals provide detailed instructions and diagrams that make it easy to understand how to fix a vehicle.

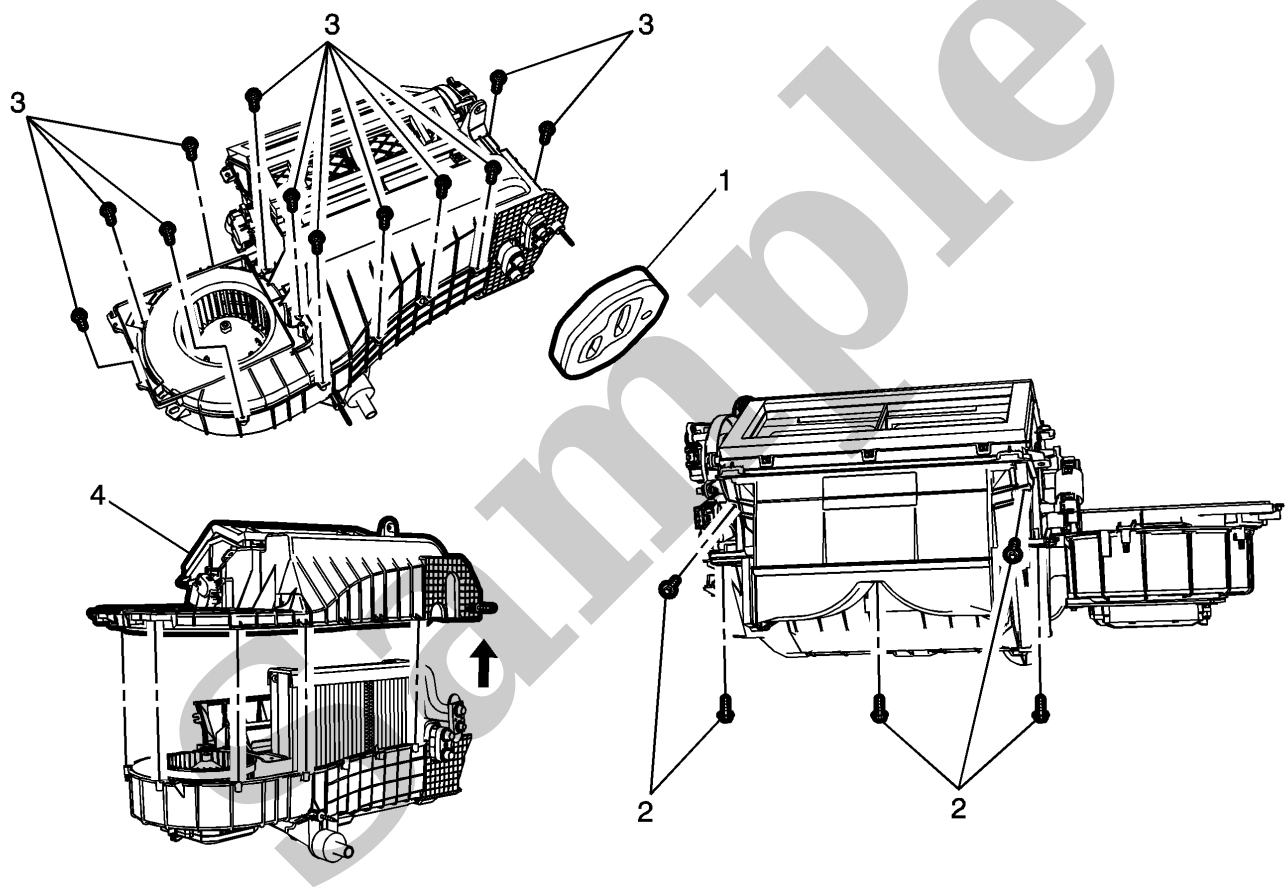
## 2006 CHEVROLET Colorado Double Cab OEM Service and Repair Workshop Manual

[Go to manual page](#)

YOUR CURRENT VEHICLE

# Air Conditioning Evaporator Upper Case Replacement

## Air Conditioning Evaporator Upper Case Replacement



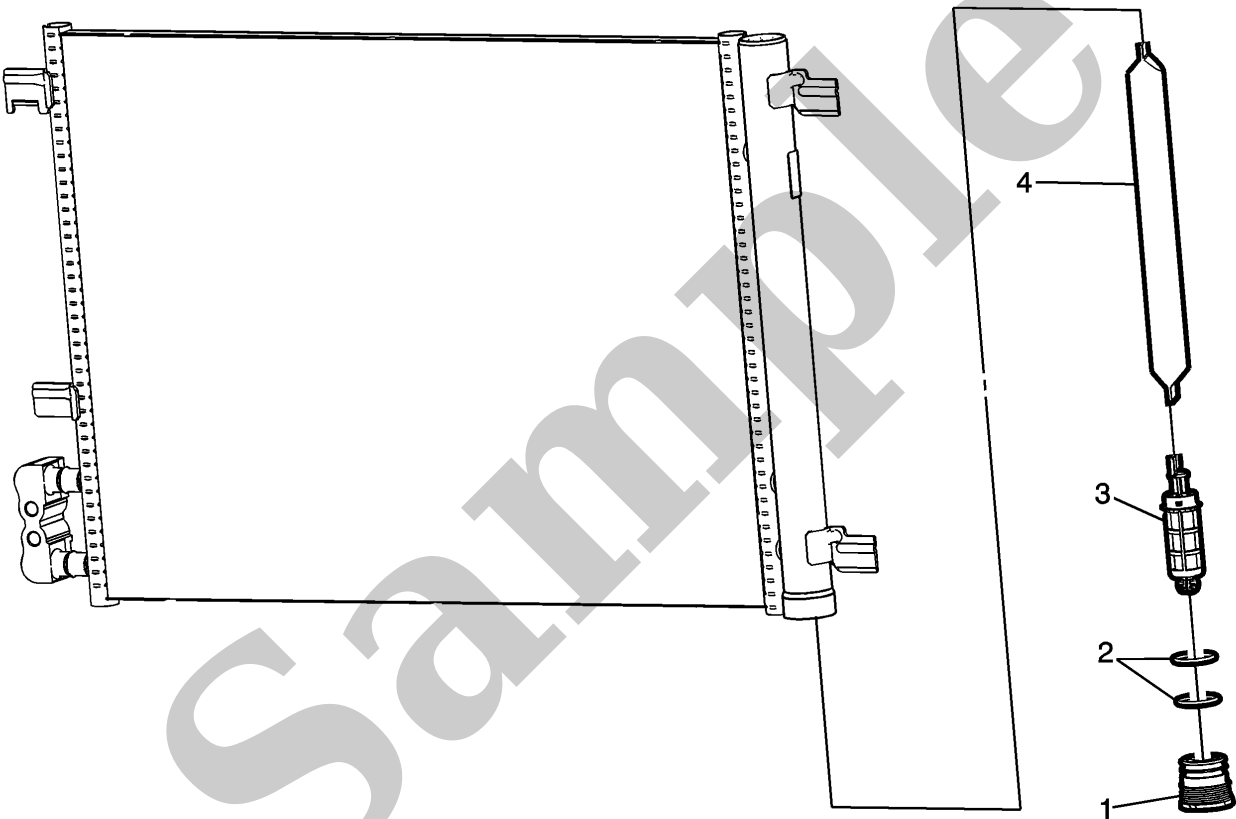
## Air Conditioning Evaporator Upper Case Replacement

Callout	Component Name
<b>Preliminary Procedures</b>	
1. Remove the air inlet housing assembly. Refer to <a href="#">Air Inlet Housing Replacement</a> .	
2. Remove the left side floor front air outlet duct. Refer to <a href="#">Floor Front Air Outlet Duct Replacement - Left Side</a> .	

YOUR CURRENT VEHICLE

# Air Conditioning Receiver and Dehydrator Replacement

## Air Conditioning Receiver and Dehydrator Replacement



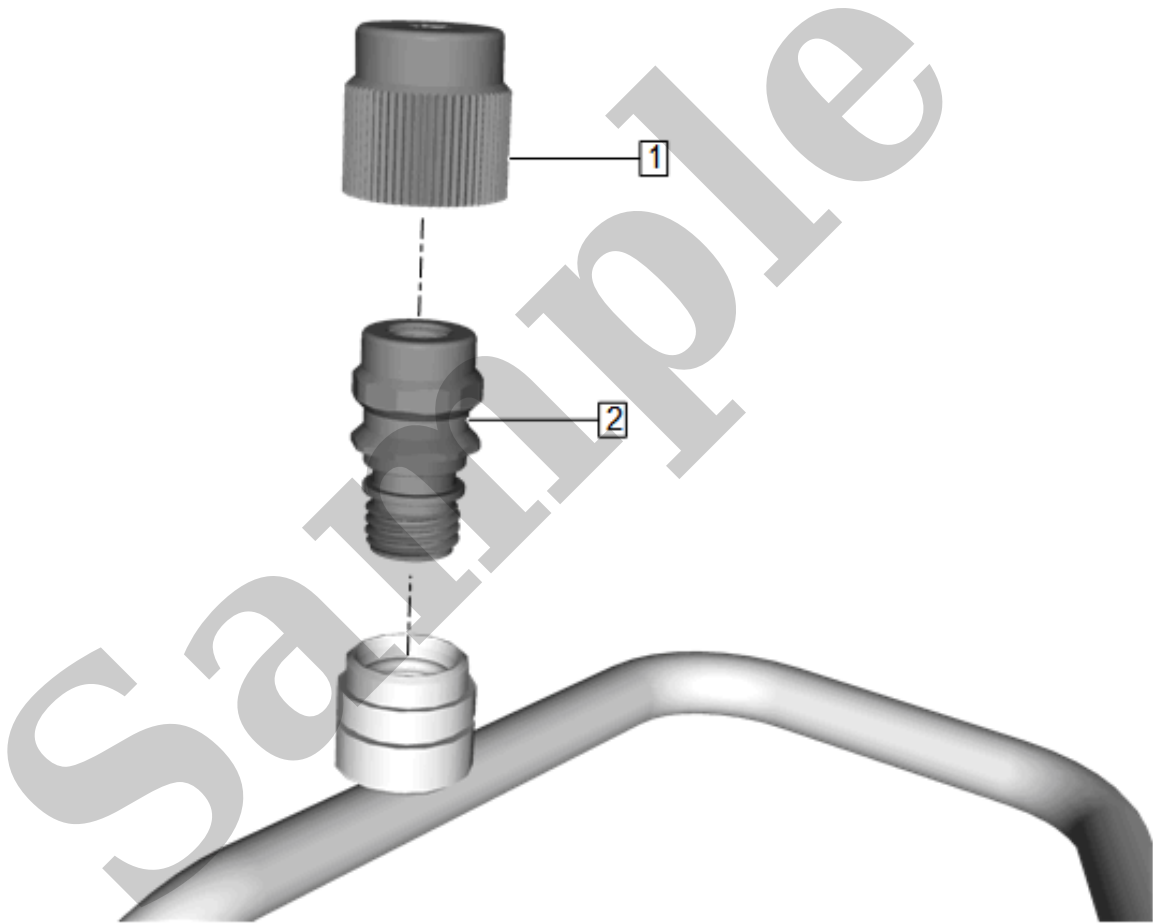
### Air Conditioning Receiver and Dehydrator Replacement

Callout	Component Name
<b>Preliminary Procedure</b> Remove the air conditioning condenser. Refer to <a href="#">Air Conditioning Condenser Replacement</a> .	
1	Air Conditioning Receiver and Dehydrator Cover Seal

YOUR CURRENT VEHICLE

## Air Conditioning Refrigerant High Pressure Service Valve Replacement

### Air Conditioning Refrigerant High Pressure Service Valve Replacement



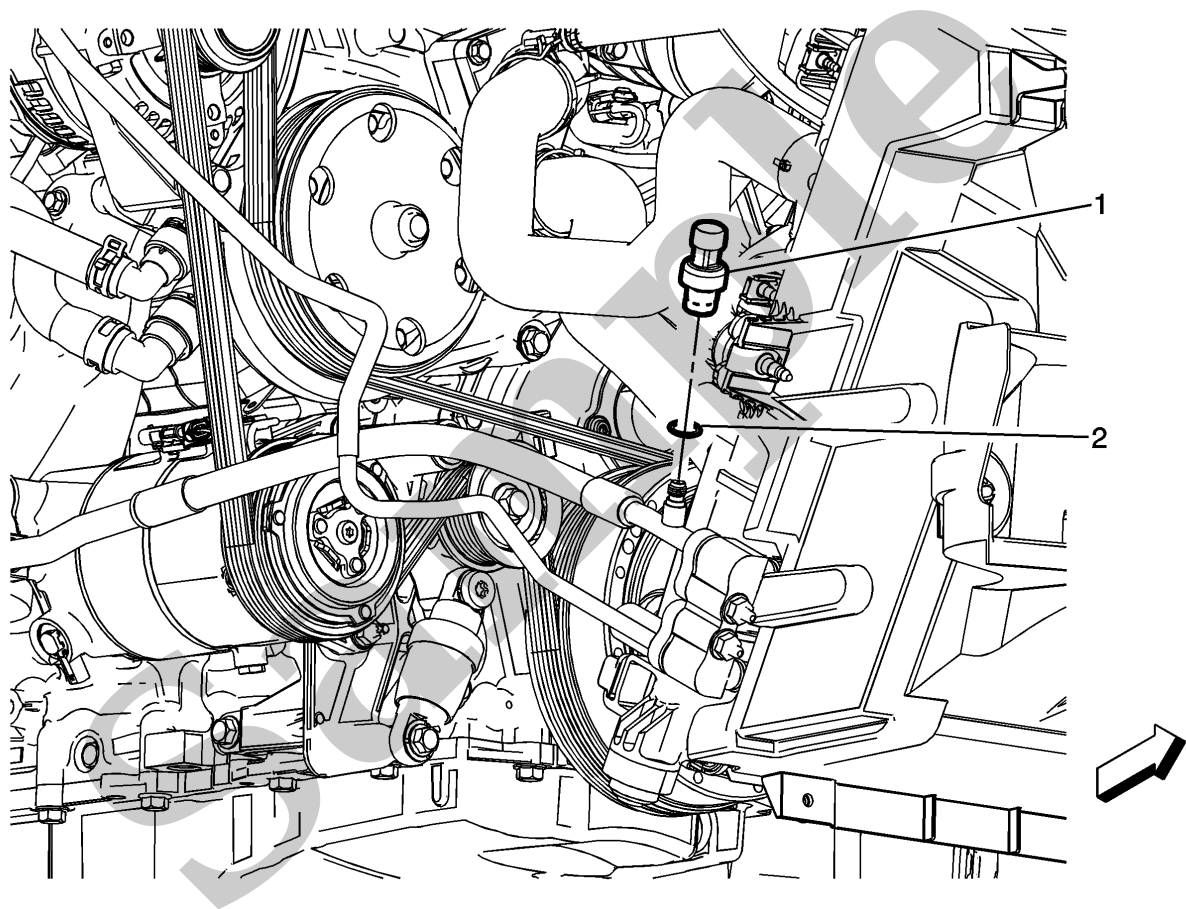
### Air Conditioning Refrigerant High Pressure Service Valve Replacement

Callout	Component Name
<b>Preliminary Procedures</b>	
1. Remove the air inlet grille panel access hole cover. Air Inlet Grille Panel Access Hole Cover Replacement	
2. Recover the refrigerant. <a href="#">Refrigerant Recovery and Recharging</a>	

YOUR CURRENT VEHICLE

## Air Conditioning Refrigerant Pressure Sensor Replacement

### Air Conditioning Refrigerant Pressure Sensor Replacement



### Air Conditioning Refrigerant Pressure Sensor Replacement

Callout	Component Name
<b>Preliminary Procedures</b>	
1. Raise and support the vehicle. Refer to <a href="#">Lifting and Jacking the Vehicle</a>	
2. Disconnect the electrical connector from the air conditioning refrigerant pressure sensor.	
1	Air Conditioning Refrigerant Pressure Sensor