

Your Ultimate Source for OEM Repair Manuals

FactoryManuals.net is a great resource for anyone who wants to save money on repairs by doing their own work. The manuals provide detailed instructions and diagrams that make it easy to understand how to fix a vehicle.

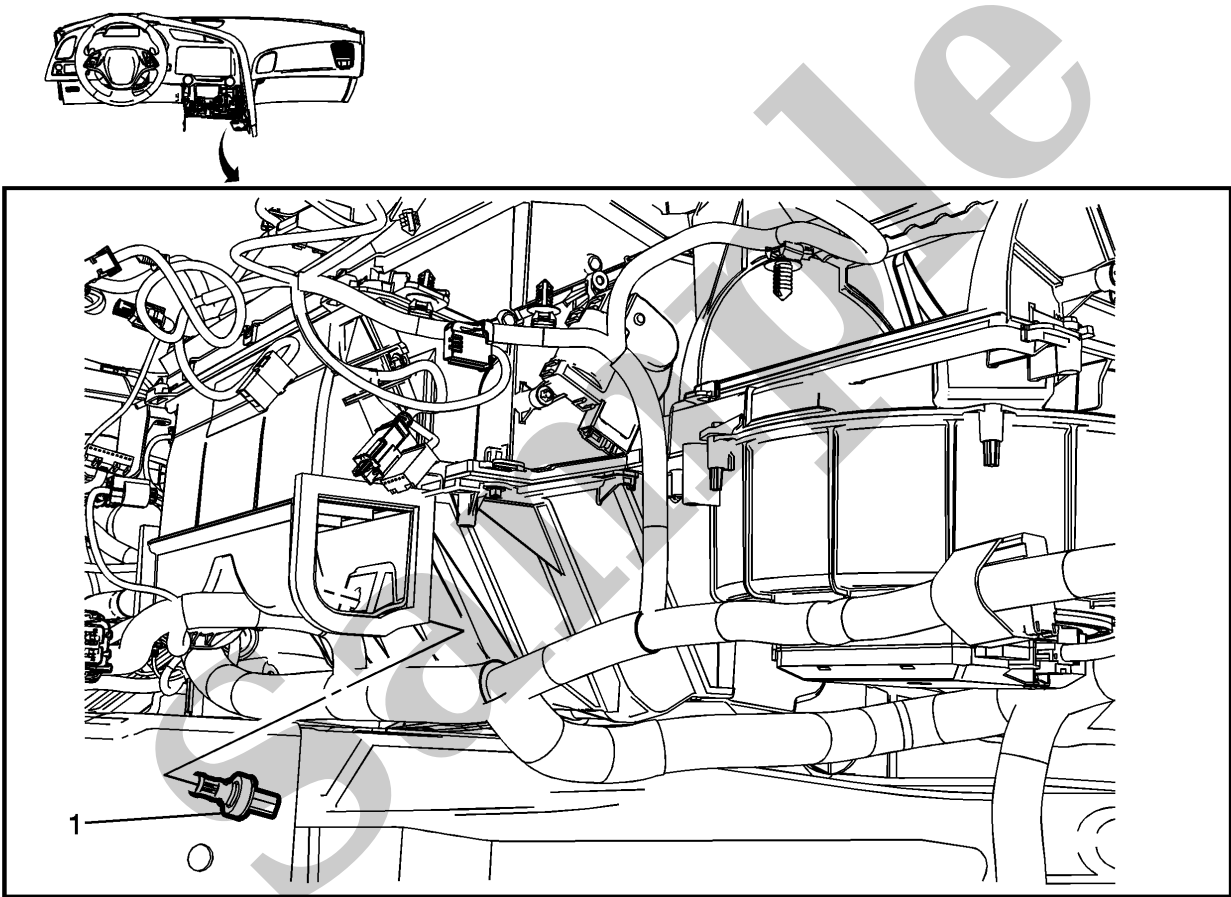
2006 CHEVROLET Captiva OEM Service and Repair Workshop Manual

[Go to manual page](#)

YOUR CURRENT VEHICLE

Floor Air Temperature Sensor Replacement - Right Side

Floor Air Temperature Sensor Replacement - Right Side



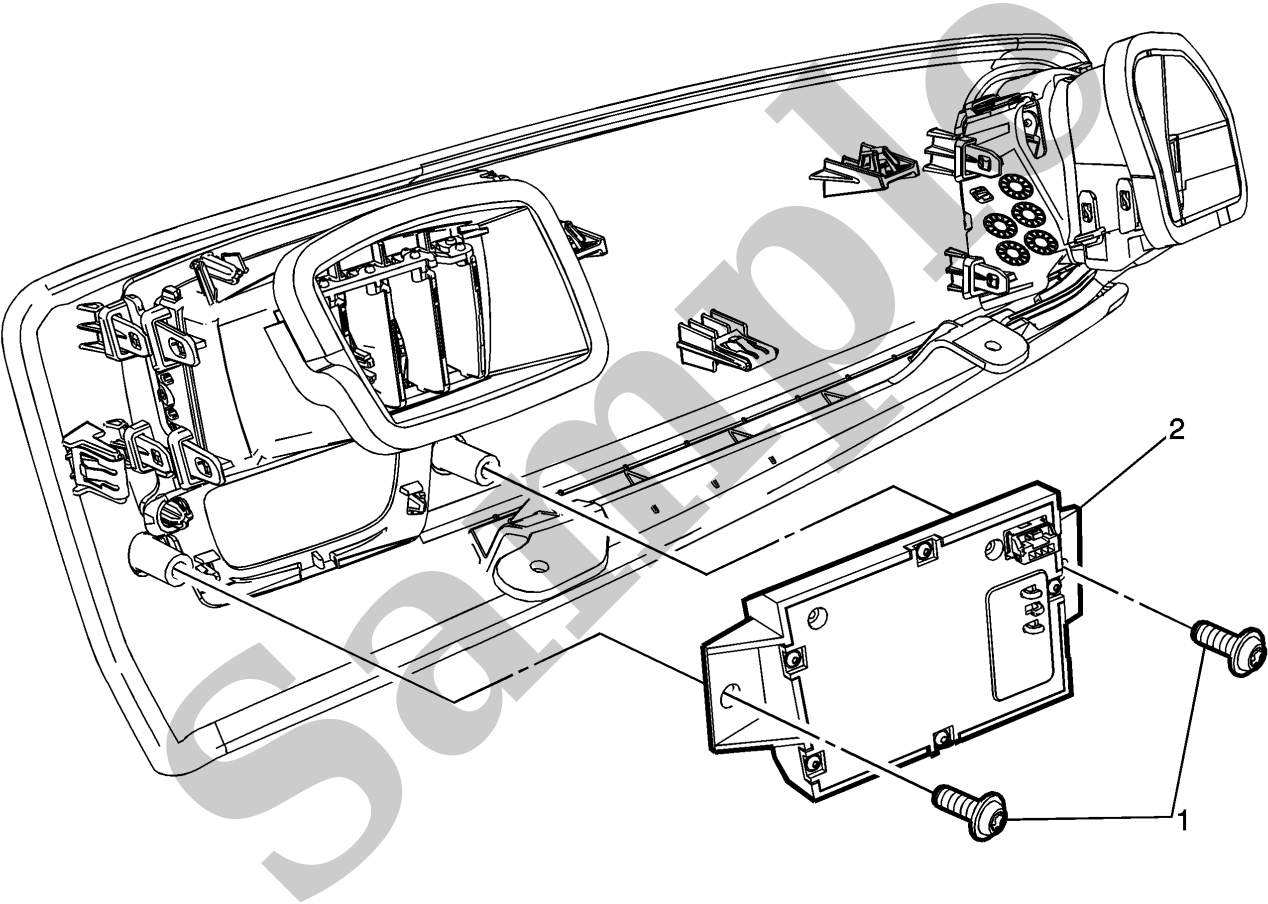
Floor Air Temperature Sensor Replacement - Right Side

Callout	Component Name
Preliminary Procedures	
1. Remove the right side floor front air outlet duct. Refer to Floor Front Air Outlet Duct Replacement - Right Side .	
2. Reposition the instrument panel wiring harness.	

YOUR CURRENT VEHICLE

Heater and Air Conditioning Auxiliary Control Replacement

Heater and Air Conditioning Auxiliary Control Replacement



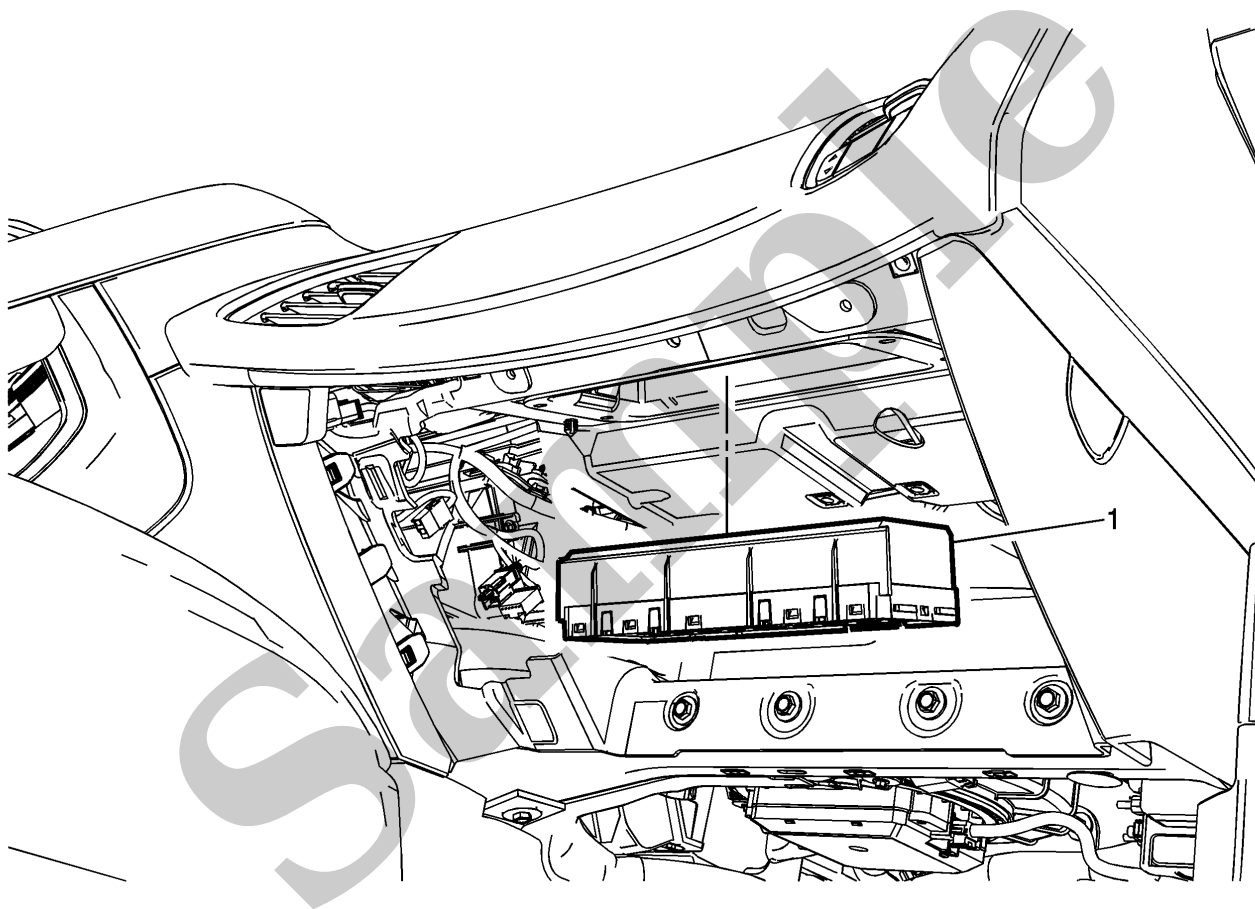
Heater and Air Conditioning Auxiliary Control Replacement

Callout	Component Name
Preliminary Procedure Remove the instrument panel trim pad. Refer to Instrument Panel Trim Pad Replacement .	
1	Heater and Air Conditioning Auxiliary Control Fastener (Qty :2)

YOUR CURRENT VEHICLE

Heater and Air Conditioning Remote Control Replacement

Heater and Air Conditioning Remote Control Replacement



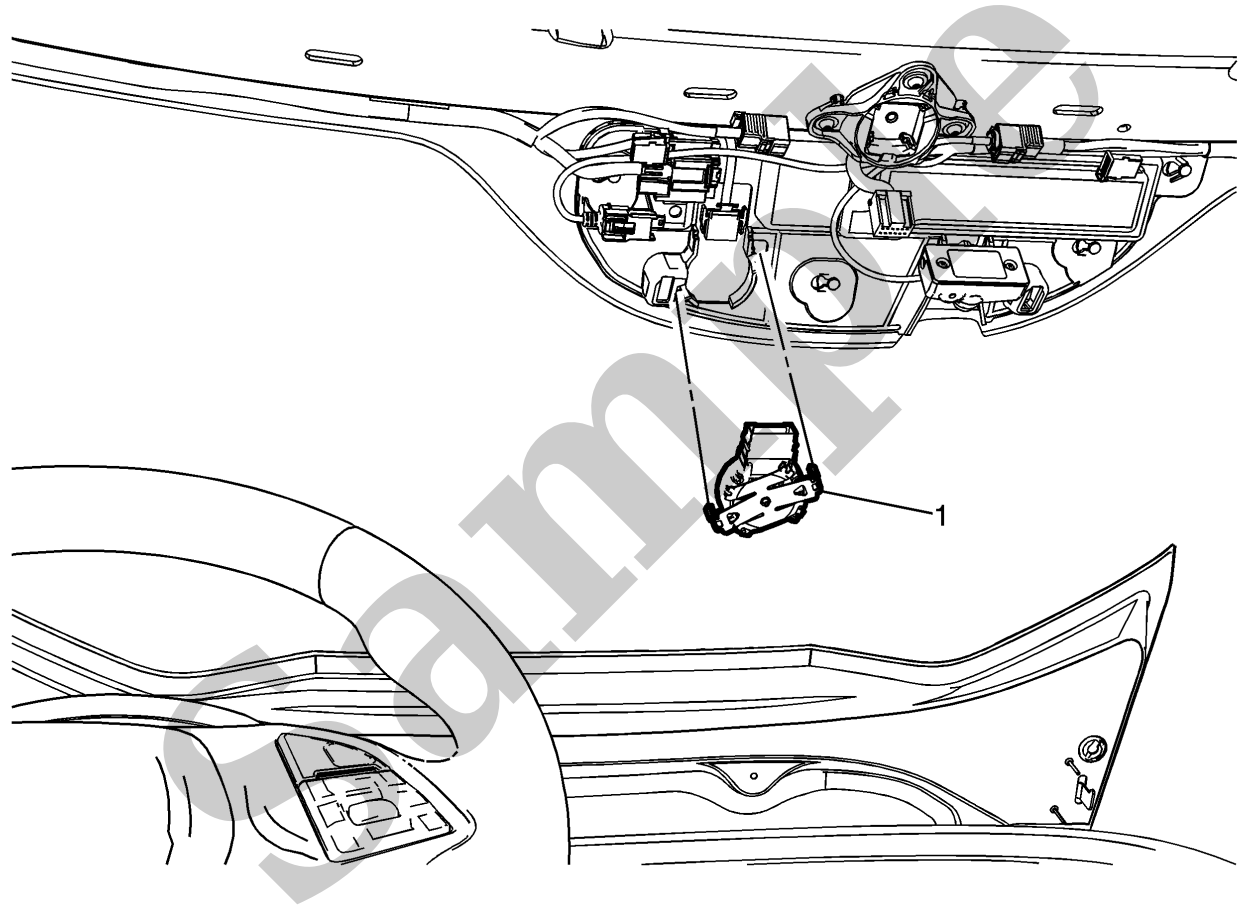
Heater and Air Conditioning Remote Control Replacement

Callout	Component Name
Preliminary Procedure Instrument Panel Passenger Knee Bolster Reinforcement Replacement	
NOTE	
Note	

YOUR CURRENT VEHICLE

Inside Air Moisture and Windshield Temperature Sensor Replacement

Inside Air Moisture and Windshield Temperature Sensor Replacement



Inside Air Moisture and Windshield Temperature Sensor Replacement

Callout	Component Name
Preliminary Procedure Remove the windshield upper garnish molding. Refer to Windshield Upper Garnish Molding Replacement .	
1	Inside Air Moisture and Windshield Temperature Sensor Procedures