

Your Ultimate Source for OEM Repair Manuals

FactoryManuals.net is a great resource for anyone who wants to save money on repairs by doing their own work. The manuals provide detailed instructions and diagrams that make it easy to understand how to fix a vehicle.

2005 NISSAN Micra C+C OEM Service and Repair Workshop Manual

[Go to manual page](#)

WARNING:

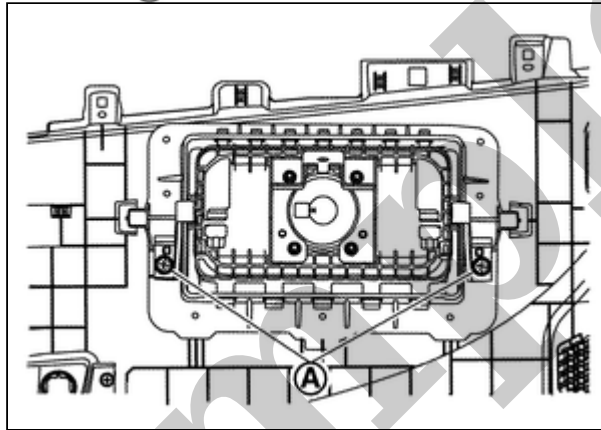
Always observe the following items for preventing accidental activation.

- Before servicing, power switch OFF, disconnect 12V battery negative terminal and wait for 3 minutes or more (discharges electricity held in the additional power supply circuit of the air bag diagnosis sensor unit). Refer to [Precautions for Removing Battery Terminal](#).
- Always work from the side of air bag module. Never work in front of it.
- Never use air tools or electric tools for servicing.

REMOVAL

1 Remove instrument upper garnish. Refer to [Removal & Installation](#).

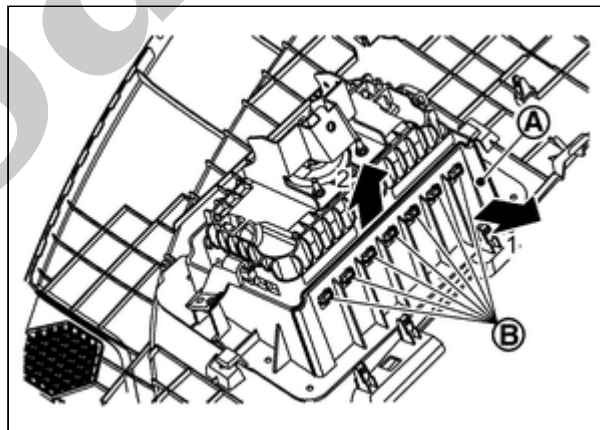
2 Remove passenger air bag module fixing screws (A).



RPR-001930874-05-000372153

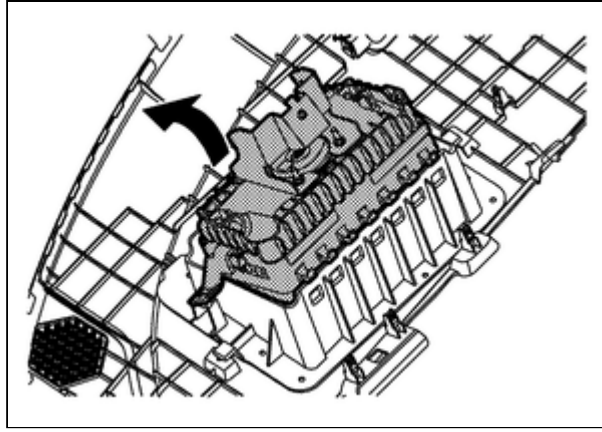
3 Remove passenger air bag module.

a Disengage fixing hooks (B) of passenger air bag while pulling instrument upper garnish (A) according to numerical order 1 → 2 indicated by arrows as shown in figure.



RPR-001930874-01-000372154

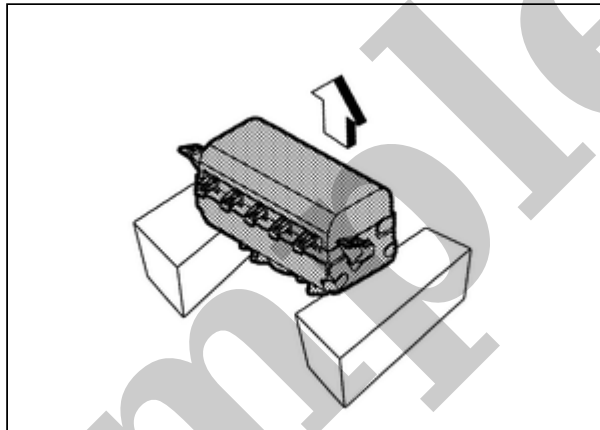
b Disengage fixing hooks of passenger air bag according arrow direction as shown in figure, and then remove passenger air bag module from instrument upper garnish.



RPR-001930874-06-000372155

CAUTION:

- To prevent accidental explosion, always place the passenger air bag module with deploying direction facing upward.



RPR-001930874-03-000354113



: Upward

- To prevent damage to the parts, never impact the passenger air bag module.



RPR-001930874-02-MHIA0009ZZ

- Replace passenger air bag module if it is dropped or sustains an impact.
- To prevent accidental explosion, never insert any foreign objects (screwdriver, etc.) into the passenger air bag module.
- To prevent accidental explosion, never disassemble the passenger air bag module.
- To prevent accidental explosion, never expose the passenger air bag module to temperature of more than 90 °C (194 °F).

- To prevent damage to the parts, never allow oil, grease, detergent, or water to come in contact with the passenger air bag module.

INSTALLATION

Note the following items, and then install in the reverse order of removal.

CAUTION:

- Never reuse mounting bolts after removal, replace with new bolts.
- Never damage the harness while installing.
- After installation is completed, perform self-diagnosis using CONSULT or air bag warning lamp, if the system is normal and "PAST" of "Self Diagnostic Result" is indicated, always perform "ERASE" of "Self Diagnostic Result" using CONSULT. Refer to [Work Flow](#).
- After the work is completed, check that no system malfunction is detected by air bag warning lamp.

Exploded View

RDE-001934043

Rear side air bag module is built in to seatback bolster.

For exploded view of seatback bolster, refer to [Exploded View](#).

Sample

Removal and Installation

RPR-001934041

CAUTION:

Removal of a single part is not possible. For removal, remove seatback bolster as a set.

For removal and installation of seatback bolster, refer to [Disassembly & Assembly](#).

Sample

Exploded View

RDE-001930879

Front side air bag module is built in to seatback assembly.

For exploded view of seatback assembly, refer to [Exploded View](#).

Sample

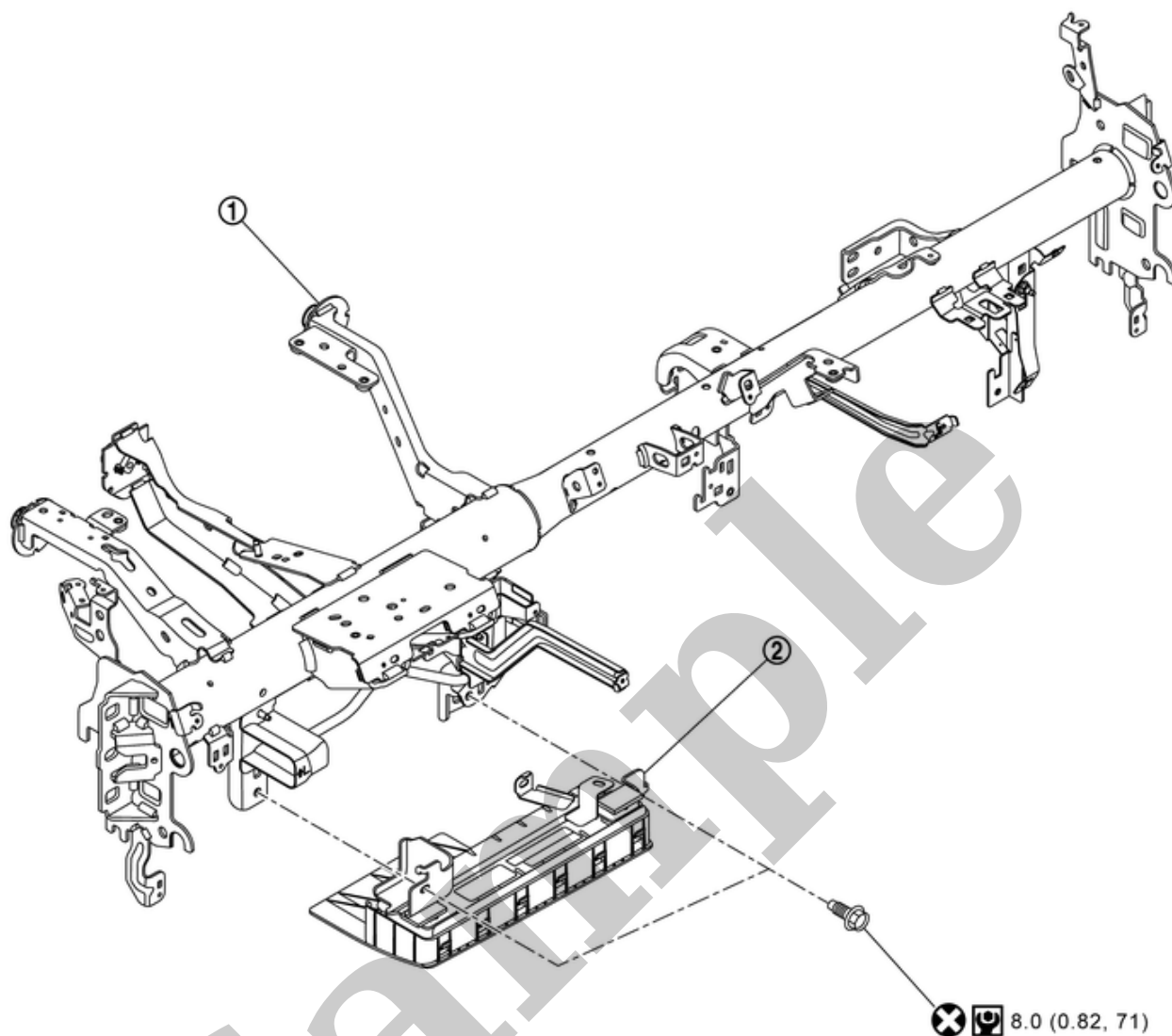
CAUTION:

Removal of single part is not possible. For removal, remove seatback assembly as a set.

For removal and installation of seatback assembly, refer to [Disassembly & Assembly](#).

Sample

SEC. 680



RDE-001934026-01-000391459

①	Steering member	②	Driver knee air bag module		
⊗	: Always replace after every disassembly.				
⊙	: N·m (kg-m, in-lb)				

WARNING:

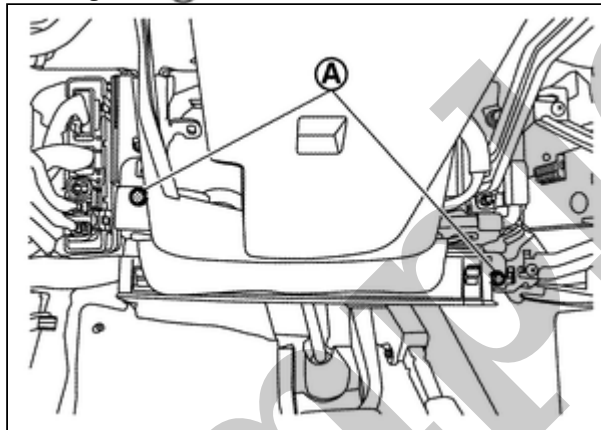
Always observe the following items for preventing accidental activation.

- Before servicing, ignition switch OFF, disconnect battery negative terminal and wait for 3 minutes or more (discharges electricity held in the additional power supply circuit of the air bag diagnosis sensor unit). Refer to [Precautions for Removing Battery Terminal](#).
- Always work from the side of air bag module. Never work in front of it.

REMOVAL

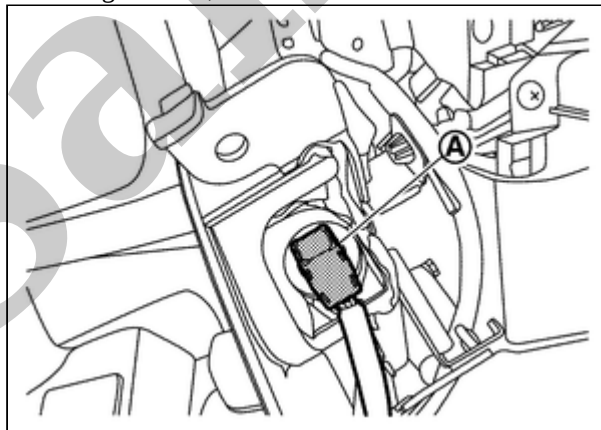
1 Remove instrument lower panel. Refer to [Removal & Installation](#).

2 Remove driver knee air bag module mounting bolts (A).



RPR-001934019-04-000391460

3 Move driver knee air bag module from steering member, and then disconnect driver knee air bag module harness connector (A).



RPR-001934019-03-000391461

CAUTION:

- For installing/removing the driver knee air bag module harness connector, insert thin screwdriver wrapped in tape into notch, lift lock and remove connector.