

Your Ultimate Source for OEM Repair Manuals

FactoryManuals.net is a great resource for anyone who wants to save money on repairs by doing their own work. The manuals provide detailed instructions and diagrams that make it easy to understand how to fix a vehicle.

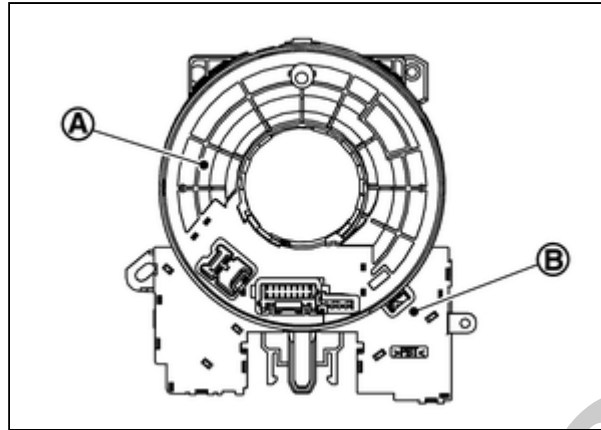
2005 NISSAN Armada OEM Service and Repair Workshop Manual

[Go to manual page](#)

Spiral Cable

SIEMD-7204034

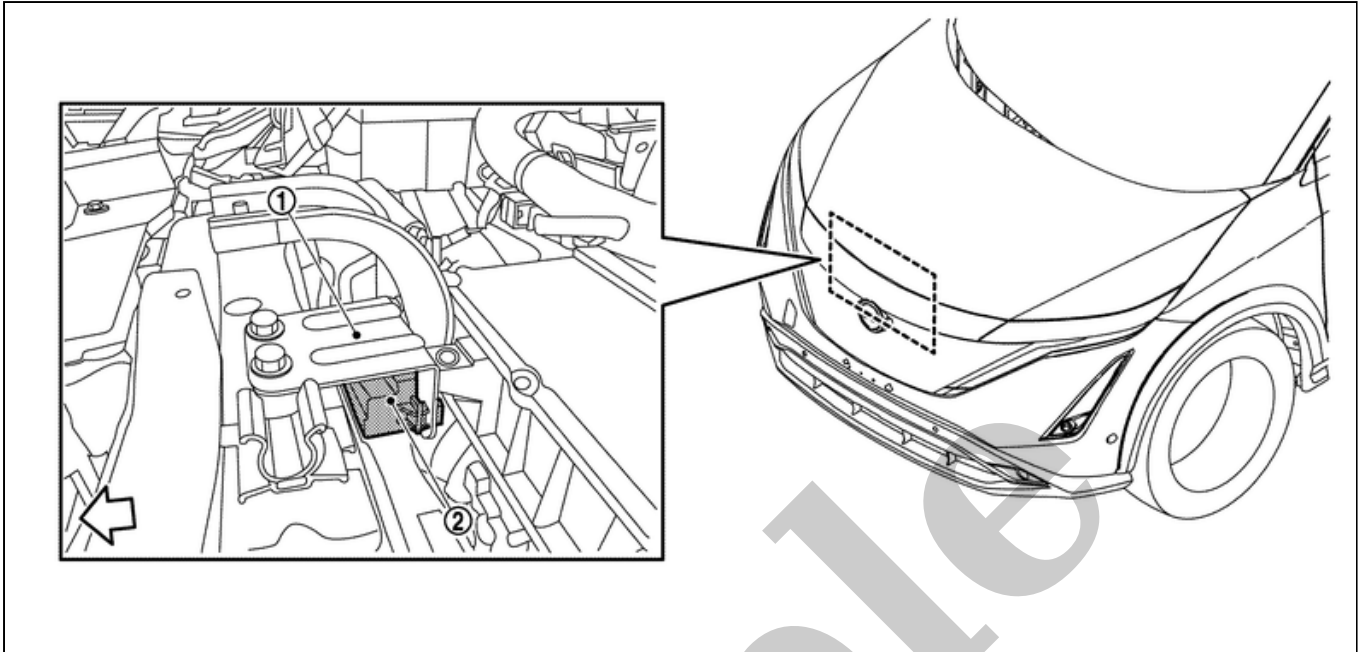
- Spiral cable electrically connects air bag diagnosis sensor unit and driver air bag module. Spiral cable mainly consists of the rotating portion (A) which performs the same movement as steering wheel, the fixed case (B) which is installed on steering wheel, and the cable which connects the rotating portion.



SIEMD-7204034-01-000360655

- Spiral cable is built into steering angle sensor which is installed to a space between combination switch and steering wheel.

- Crush zone sensor ② is installed to radiator core support via bracket ①. Crash zone sensor integrates frontal collision “G” sensor which detects frontal collision impact that exceeds the specified limit of the vehicle.



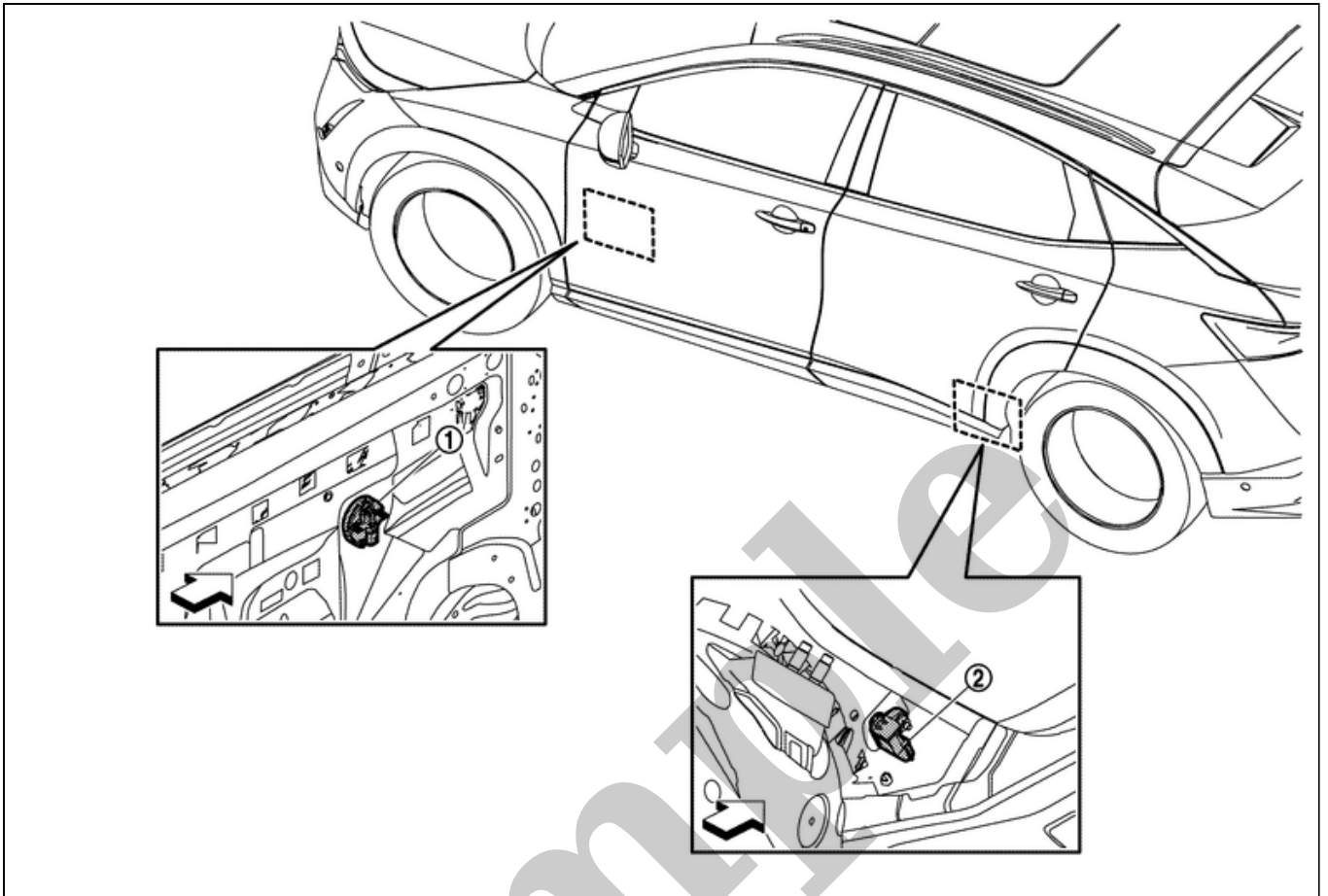
SIEMD-7204033-01-000377240



: Vehicle front

- In a frontal collision that exceeds the specified limit of the vehicle, crush zone sensor detects impact. If frontal collision safing sensor in air bag diagnosis sensor unit judges that impact is due to a collision, driver air bag, passenger air bag, seat belt pretensioner (front and second) and lap pretensioner operate.

- Front door satellite sensor ① is installed to front door panel.



SIEMD-7204032-01-000372141



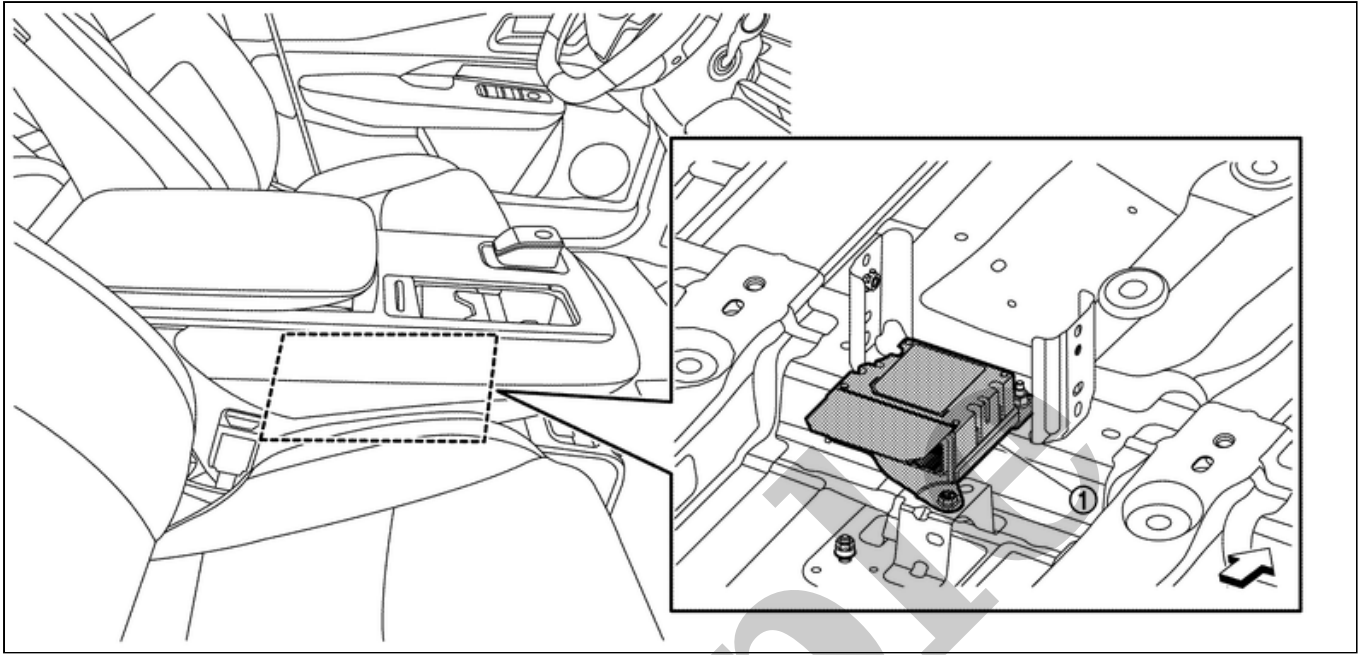
: Vehicle front

- C-pillar satellite sensor ② is installed to luggage side lower finisher remove portion of the C-pillar.
- Front door satellite sensor is equipped with side collision pressure sensor which detects side collision impact that exceeds the specified limit of the vehicle.
- C-pillar satellite sensor are equipped with side collision G sensor which detects side collision impact that exceeds the specified limit of the vehicle.
- In a side collision that exceeds the specified limit of the vehicle, satellite sensor detects impact. If side collision safing sensor in air bag diagnosis sensor unit judges that impact is due to a collision, front side air bag, front center air bag (with front center air bag models), rear side air bag, curtain air bag, seat belt pre-tensioner and lap pre-tensioner operate.

Air Bag Diagnosis Sensor Unit

SIEMD-7204027

- Air bag diagnosis sensor unit ① is installed to front seat center portion (under center console). Air bag diagnosis sensor unit integrates control functions of driver air bag, passenger air bag, front side air bag, front center air bag (with front center air bag models), rear side air bag, curtain air bag, seat belt pre-tensioner and lap pre-tensioner.



SIEMD-7204027-01-000374180



: Vehicle front

- Air bag diagnosis sensor unit integrates frontal collision G sensor, frontal collision safing sensor, and side collision safing sensor.
- Air bag diagnosis sensor unit has a function that judges impact due to frontal and side collisions exceeding the specified limit of the vehicle. Air bag diagnosis sensor unit also has an auxiliary power supply function that supplements battery power supply in the event battery is damaged in a collision.
- Air bag diagnosis sensor unit diagnoses electric system of entire air bag system. Self-diagnosis function is adopted, which indicates system malfunction by turning ON air bag warning lamp on combination meter when a malfunction is detected. Diagnosis using CONSULT is possible.

Air Bag Warning Lamp

SIEMD-7204026

- Air bag warning lamp turns ON or blinks indicating a system malfunction when a malfunction is detected for electric system of SRS air bag system and seat belt pre-tensioner system.



SIEMD-6234939-01-F-1845D

- For operation check purposes, air bag warning lamp turns ON for 7 seconds after power switch is turned ON. During this period of time, air bag diagnosis sensor unit performs system diagnosis.



NOTE:

SRS air bag and seat belt pre-tensioner do not operate for approximately 7 seconds (air bag warning lamp is turning ON) after power switch is turned ON.

Occupant Detection System Sensor

SIEMD-7204025

- Occupant detection system sensor installed in the passenger seat track portion of the frame.
- Occupant detection system sensor transmits the passenger seat status (occupied or empty) to occupant detection system control unit.

Sample

Occupant Detection System Control Unit

SIEMD-7204022

- Occupant detection system control unit installed under the passenger seat cushion frame.
- Occupant detection system control unit transmits the passenger seat status (occupied or empty) to air bag diagnosis sensor unit.

Sample

Front Passenger Air Bag OFF Indicator

SIEMD-7204018

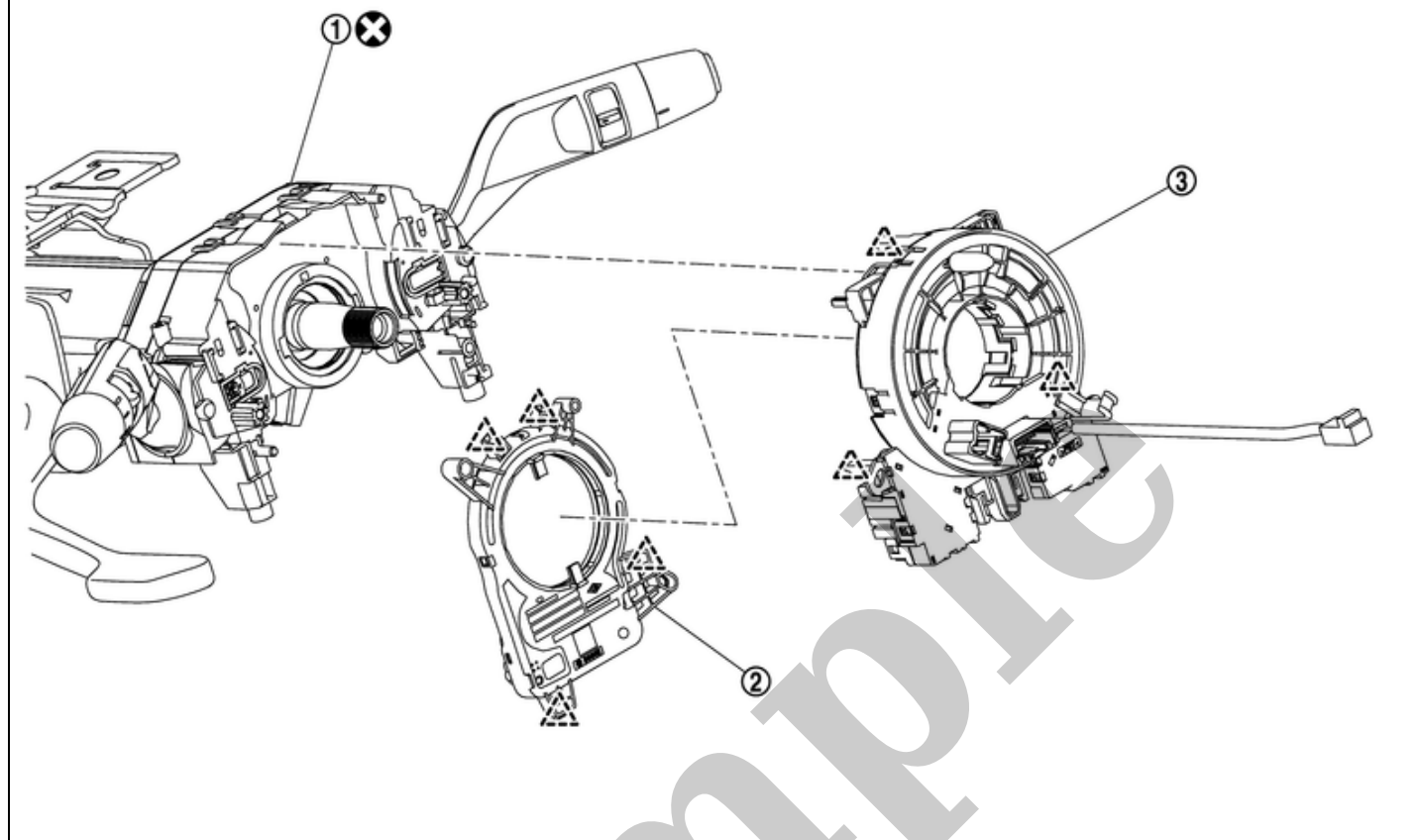
Front passenger air bag OFF indicator indicates whether or not passenger air bag is in the activation mode based on the judgement of occupant detection system.



SIEMD-6171116-01-SHIA0048ZZ

Sample

SEC. 251•253



RDE-001930871-01-000354101

①	Combination switch	②	Steering angle sensor	③	Spiral cable
△	: Pawl				
⊗	: Always replace after every disassembly.				