

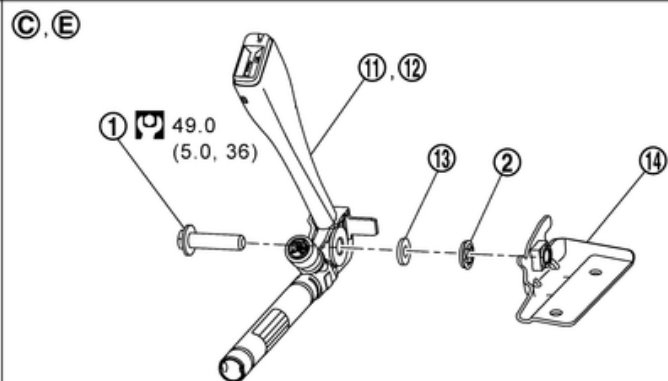
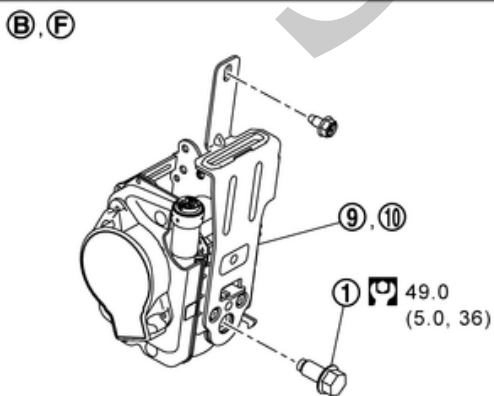
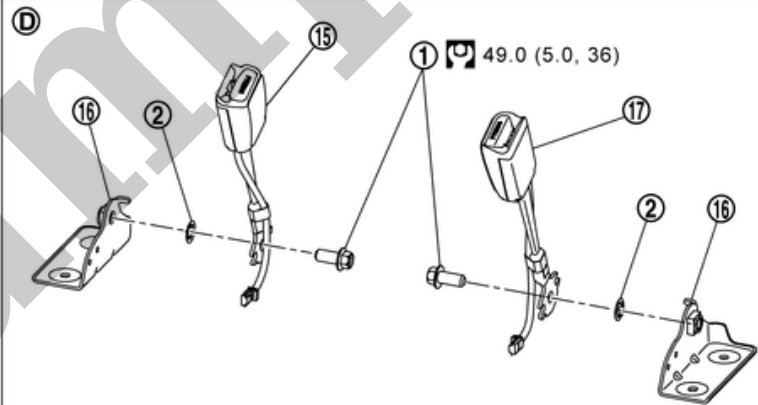
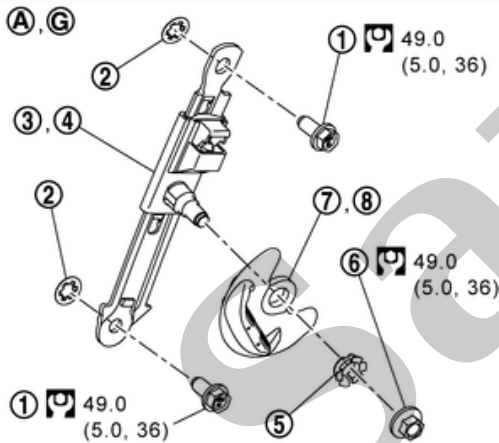
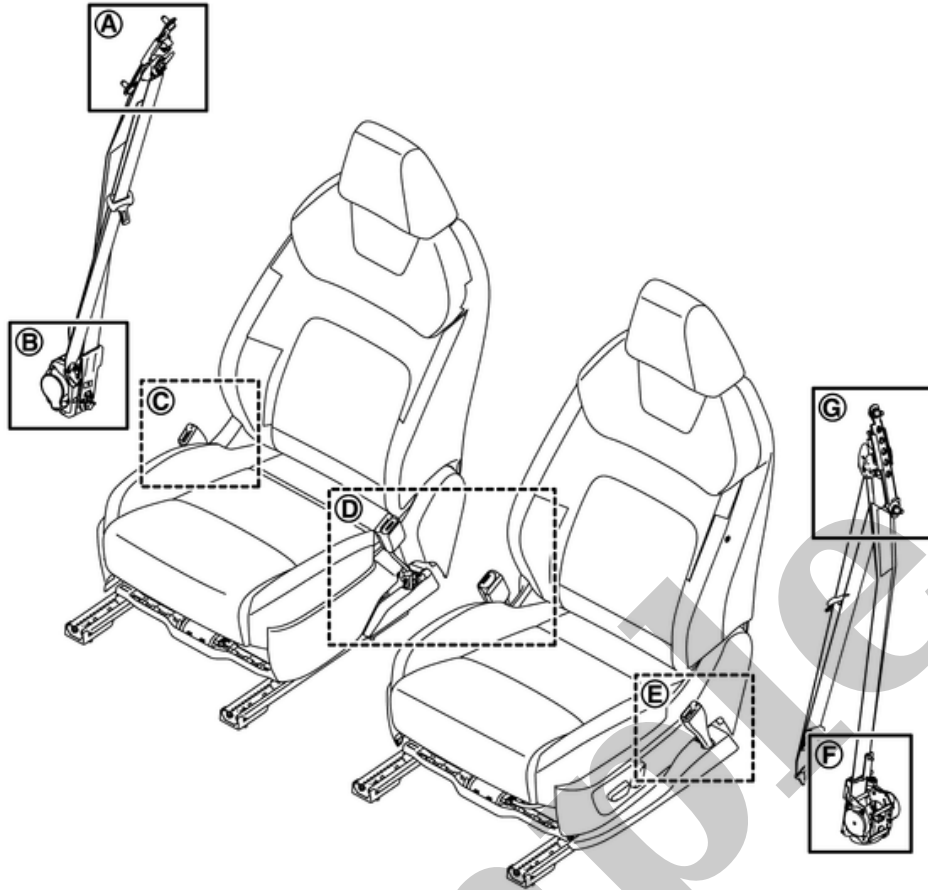
Your Ultimate Source for OEM Repair Manuals

FactoryManuals.net is a great resource for anyone who wants to save money on repairs by doing their own work. The manuals provide detailed instructions and diagrams that make it easy to understand how to fix a vehicle.

2005 NISSAN 350Z Roadster OEM Service and Repair Workshop Manual

[Go to manual page](#)

SEC. 868



RDE-001930845-01-000347794

①	Anchor bolt	②	Retaining washer	③	Seat belt adjuster RH
④	Seat belt adjuster LH	⑤	Collar	⑥	Anchor nut
⑦	Shoulder anchor RH	⑧	Shoulder anchor LH	⑨	Seat belt pre-tensioner retractor RH
⑩	Seat belt pre-tensioner retractor LH	⑪	Lap pre-tensioner RH	⑫	Lap pre-tensioner LH

⑬	Spacer	⑭	Lap pre-tensioner bracket	⑮	Seat belt buckle RH
⑯	Seat belt buckle bracket	⑰	Seat belt buckle LH		
Ⓔ	: N·m (kg-m, ft-lb)				

Sample

REMOVAL

- 1 Remove rear seat cushion. Refer to [Disassembly & Assembly](#).
- 2 Disengage rear seat belt buckle fixing harness clip, and then disconnect rear seat belt buckle harness connector.
- 3 Remove seat belt buckle mounting anchor bolt, and then remove seat belt buckle.

INSTALLATION

Install in the reverse order of removal.

Sample

AFTER A COLLISION

WARNING:

To avoid the risk of death or severe injury:

- **Inspect all seat belt system components including the seat belt webbing, retractors, pretensioners, buckles, anchors, and attaching hardware after any collision.**
- **NISSAN/INFINITI recommends that all seat belt assemblies and buckles in use during a collision be replaced unless the collision was minor and all seat belt system components including the seat belt webbing, retractors, pretensioners, buckles, anchors, and attaching hardware show no damage and continue to operate properly.**
- **Inspect all seat belt assemblies and components including webbing, retractors, buckles, anchors and attaching hardware not in use during a collision. Replace if either damage or improper operation is noted.**
- **Seat belt pretensioners activate whenever an air bag deploys and cannot be reused. If an air bag deploys, always replace the seat belt assemblies and system components including webbing, retractors, buckles, anchors and attaching hardware, even if the seat belts were not in use during a collision.**
- **Failure to follow any of the above steps could result in serious personal injury in an accident.**

Replace any seat belt assembly (including anchor bolts) if:

- The seat belt is in use at the time of a collision (except for minor collisions and the belts, retractors and buckles show no damage and continue to operate properly).
- The seat belt is damaged in an accident (i.e. torn webbing, bent retractor or guide, etc.).
- The seat belt attaching point is damaged in an accident. Inspect the seat belt attaching area for damage or distortion and repair if necessary before installing a new seat belt assembly.
- Anchor bolts are deformed or worn out.
- The seat belt assembly must be replaced even if the seat belts were not in use during the collision in which the air bags were deployed.

PRELIMINARY CHECKS

1 Check the seat belt warning lamp for proper operation as per the following:

a Turn power switch ON. The seat belt warning lamp should illuminate.

b Fasten driver seat belt. The seat belt warning lamp should turn OFF.

2 If the air bag warning lamp turns ON, perform self-diagnosis using CONSULT. Refer to [CONSULT Function](#).

3 Check that the seat belt retractor, seat belt anchor and buckle bolts are tightened firmly.

4 Repeat step above if necessary to check the other seat belts.

REMOVAL

- 1 Remove front seat. Refer to [Removal & Installation](#).
- 2 Disconnect seat belt buckle harness connector.
- 3 Remove seat belt buckle mounting anchor bolt, and then remove seat belt buckle.

INSTALLATION

Install in the reverse order of removal.

Sample

AFTER A COLLISION

WARNING:

To avoid the risk of death or severe injury:

- Inspect all seat belt system components including the seat belt webbing, retractors, pretensioners, buckles, anchors, and attaching hardware after any collision.
- NISSAN/INFINITI recommends that all seat belt assemblies and buckles in use during a collision be replaced unless the collision was minor and all seat belt system components including the seat belt webbing, retractors, pretensioners, buckles, anchors, and attaching hardware show no damage and continue to operate properly.
- Inspect all seat belt assemblies and components including webbing, retractors, buckles, anchors and attaching hardware not in use during a collision. Replace if either damage or improper operation is noted.
- Seat belt pretensioners activate whenever an air bag deploys and cannot be reused. If an air bag deploys, always replace the seat belt assemblies and system components including webbing, retractors, buckles, anchors and attaching hardware, even if the seat belts were not in use during a collision.
- Failure to follow any of the above steps could result in serious personal injury in an accident.

Replace any seat belt assembly (including anchor bolts) if:

- The seat belt is in use at the time of a collision (except for minor collisions and the belts, retractors and buckles show no damage and continue to operate properly).
- The seat belt is damaged in an accident (i.e. torn webbing, bent retractor or guide, etc.).
- The seat belt attaching point is damaged in an accident. Inspect the seat belt attaching area for damage or distortion and repair if necessary before installing a new seat belt assembly.
- Anchor bolts are deformed or worn out.
- The seat belt assembly must be replaced even if the seat belts were not in use during the collision in which the air bags were deployed.

PRELIMINARY CHECKS

1 Check the seat belt warning lamp for proper operation as per the following:

a Turn power switch ON. The seat belt warning lamp should illuminate.

b Fasten driver seat belt. The seat belt warning lamp should turn OFF.

2 If the air bag warning lamp turns ON, perform self-diagnosis using CONSULT. Refer to [CONSULT Function](#).

3 Check that the seat belt retractor, seat belt anchor and buckle bolts are tightened firmly.

4 Repeat steps above if necessary to check the other seat belts.

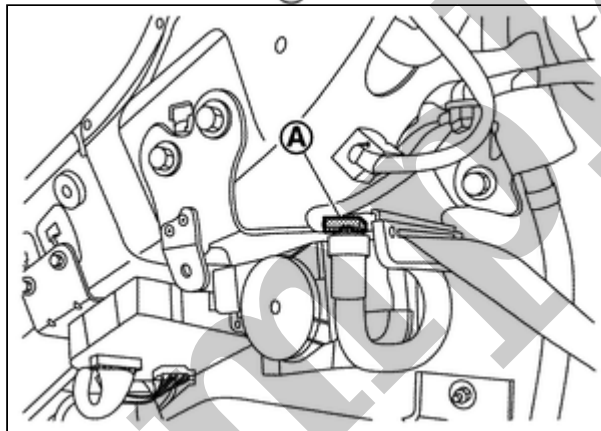
WARNING:

- Before servicing, disconnect ground line of battery. Refer to [Precautions for Removing Battery Terminal](#).
- Prevent accidental activation, Refer to [Precaution for Supplemental Restraint System \(SRS\) "AIR BAG" and "SEAT BELT PRE-TENSIONER"](#).

REMOVAL

Seat Belt Pre-tensioner Retractor (LH and RH)

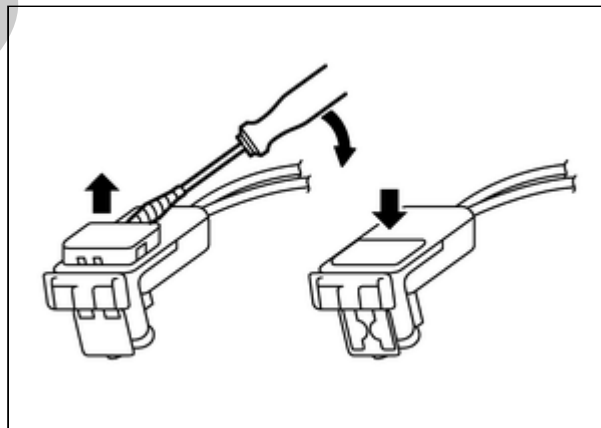
- 1 Remove luggage side upper finisher. Refer to [Removal & Installation](#).
- 2 Remove anchor plate mounting anchor bolt.
- 3 Disconnect seat belt pre-tensioner retractor harness connector **A**.



RPR-001930851-04-000378964

CAUTION:

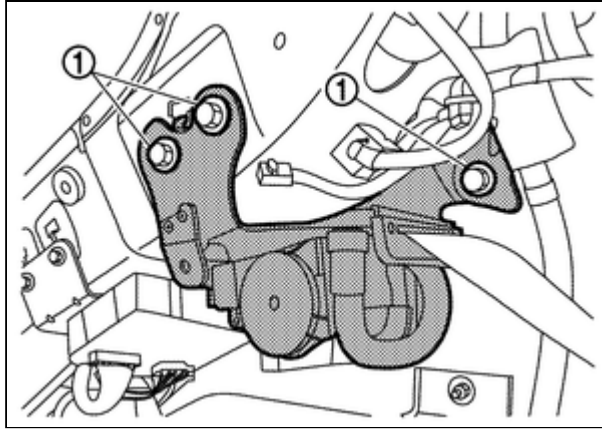
- For installing/removing seat belt pre-tensioner retractor harness connector, insert thin screwdriver wrapped in tape into notch, lift lock and remove connector.



RPR-001930851-09-HIA0953J

- Install connector with lock raised, and push lock into connector.
- After installing the connector, check that the lock is pushed securely into it.

- 4 Remove seat belt pre-tensioner retractor mounting anchor bolts **1**, and then remove seat belt pre-tensioner retractor.



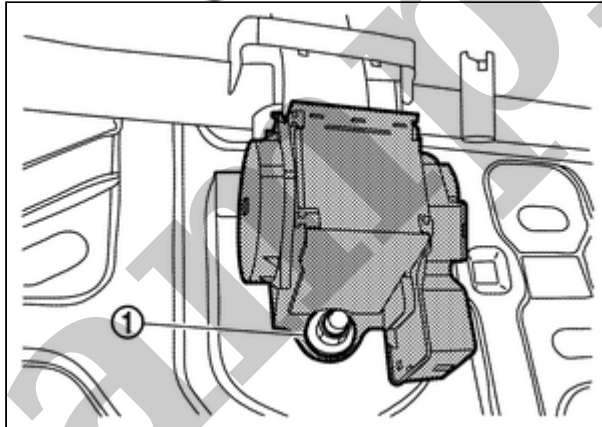
RPR-001930851-01-000378965

CAUTION:

Never place pre-tensioner retractor in an area where the temperature reaches 80°C (176°F) or more.

Center Seat Belt Retractor

- 1 Remove seatback pad. Refer to [Disassembly & Assembly](#).
- 2 Remove center seat belt retractor mounting anchor nut ①, and then remove center seat belt retractor.



RPR-001930851-02-000358895

INSTALLATION

Install in the reverse order of removal.

AFTER A COLLISION

WARNING:

To avoid the risk of death or severe injury:

- **Inspect all seat belt system components including the seat belt webbing, retractors, pretensioners, buckles, anchors, and attaching hardware after any collision.**
- **NISSAN/INFINITI recommends that all seat belt assemblies and buckles in use during a collision be replaced unless the collision was minor and all seat belt system components including the seat belt webbing, retractors, pretensioners, buckles, anchors, and attaching hardware show no damage and continue to operate properly.**
- **Inspect all seat belt assemblies and components including webbing, retractors, buckles, anchors and attaching hardware not in use during a collision. Replace if either damage or improper operation is noted.**
- **Seat belt pretensioners activate whenever an air bag deploys and cannot be reused. If an air bag deploys, always replace the seat belt assemblies and system components including webbing, retractors, buckles, anchors and attaching hardware, even if the seat belts were not in use during a collision.**
- **Failure to follow any of the above steps could result in serious personal injury in an accident.**

Replace any seat belt assembly (including anchor bolts) if:

- The seat belt is in use at the time of a collision (except for minor collisions and the belts, retractors and buckles show no damage and continue to operate properly).
- The seat belt is damaged in an accident (i.e. torn webbing, bent retractor or guide, etc.).
- The seat belt attaching point is damaged in an accident. Inspect the seat belt attaching area for damage or distortion and repair if necessary before installing a new seat belt assembly.
- Anchor bolts are deformed or worn out.
- The seat belt assembly must be replaced even if the seat belts were not in use during the collision in which the air bags were deployed.

PRELIMINARY CHECKS

1 Check the seat belt warning lamp for proper operation as per the following:

a Turn power switch ON. The seat belt warning lamp should illuminate.

b Fasten driver seat belt. The seat belt warning lamp should turn OFF.

2 If the air bag warning lamp turns ON, perform self-diagnosis using CONSULT. Refer to [CONSULT Function](#).

3 Check that the seat belt retractor, seat belt anchor and buckle bolts are tightened firmly.

4 Check the shoulder seat belt guide for rear seat. Check that guide swivels freely and that webbing lays flat and does not bind in guide.

5 Check retractor operation:

a Fully extend the seat belt webbing and check for twists, tears or other damage.

b Allow the seat belt to retract. Check that webbing returns smoothly and completely into the retractor. If the seat belt does not return smoothly, wipe the inside of the loops with a clean paper cloth. Dirt build-up in the loops of that upper anchors can cause the seat belts to retract slowly.

c Fasten the seat belt. Check that the seat belt is securely fastened.

d Release the seat belt. Check that the webbing and tongue return to their original position.

6 Repeat steps above if necessary to check the other seat belts.