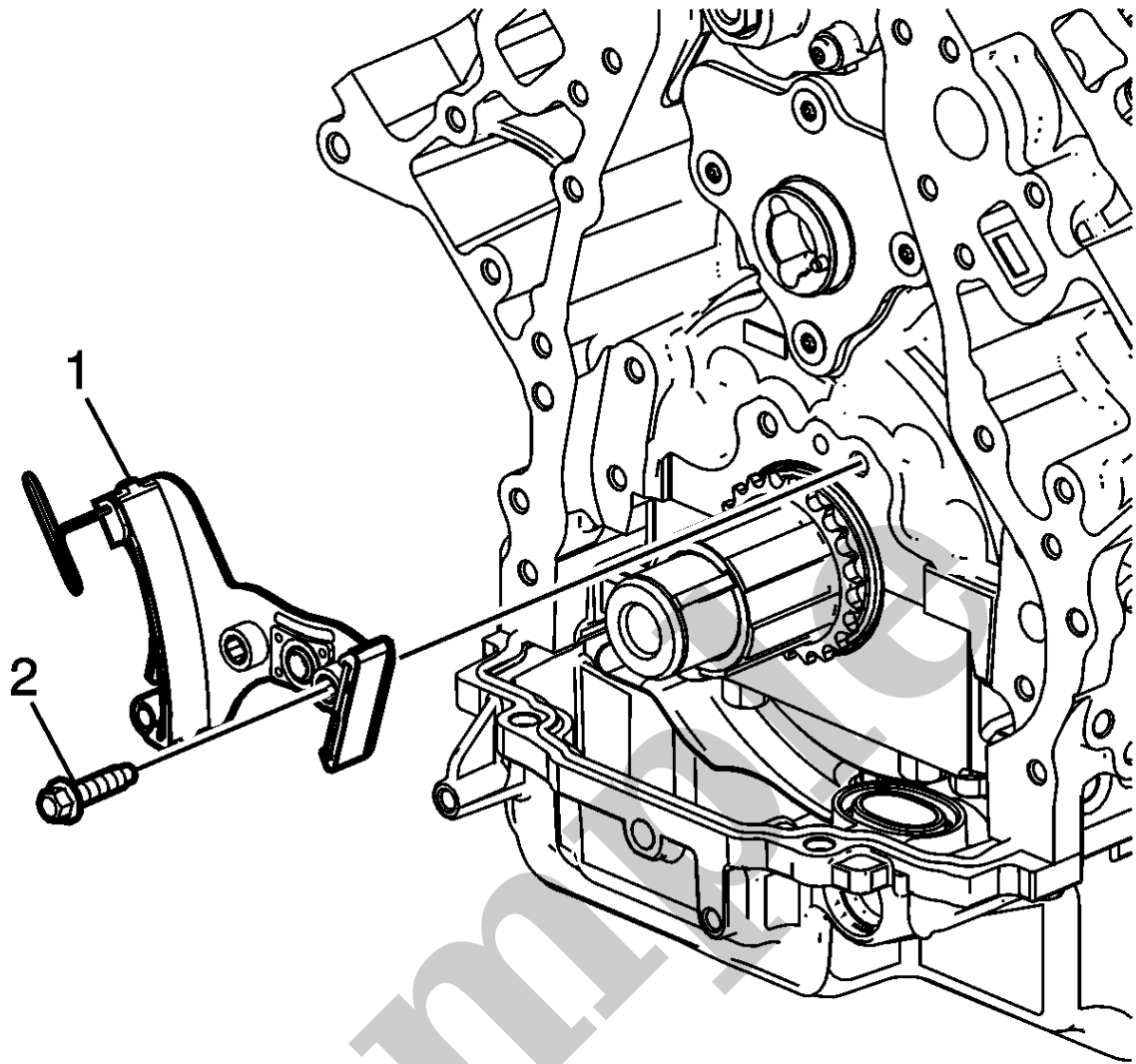


# Your Ultimate Source for OEM Repair Manuals

FactoryManuals.net is a great resource for anyone who wants to save money on repairs by doing their own work. The manuals provide detailed instructions and diagrams that make it easy to understand how to fix a vehicle.

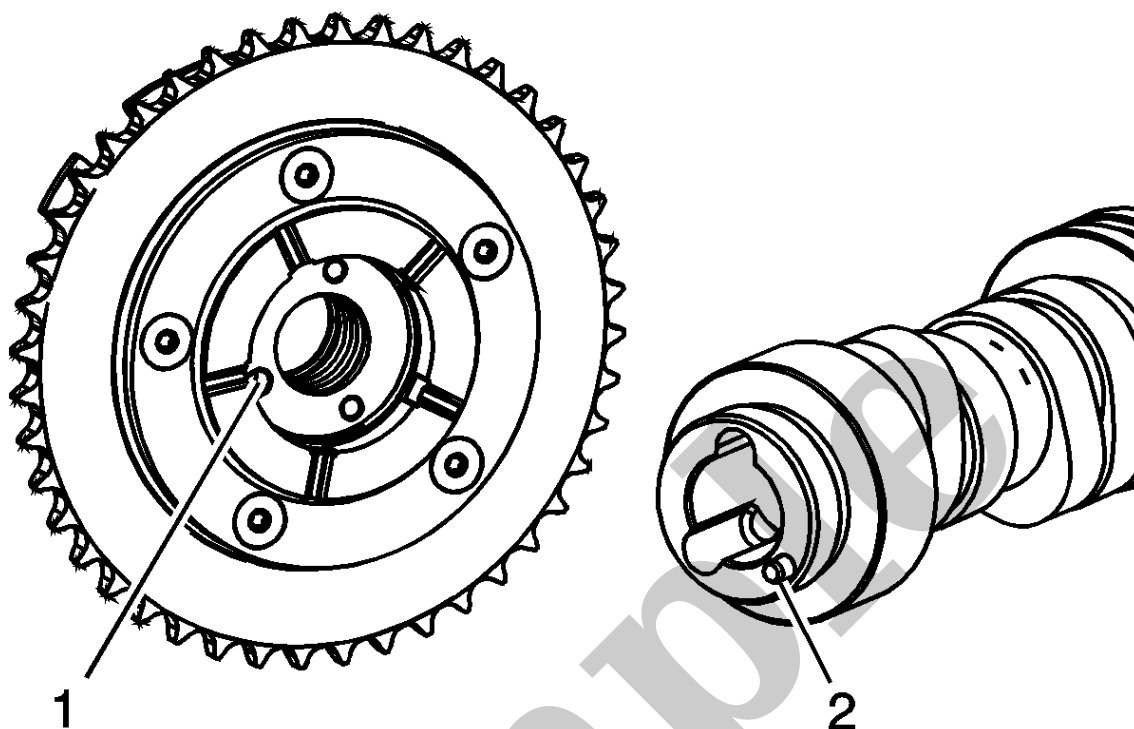
## 2005 CHEVROLET Evanda OEM Service and Repair Workshop Manual

[Go to manual page](#)



6.

Install the timing chain tensioner and left side bolt (2) hand tight. Do not install the right side bolt at this time. The right side bolt will be installed after the camshaft position (CMP) actuator and chain have been installed onto the engine.



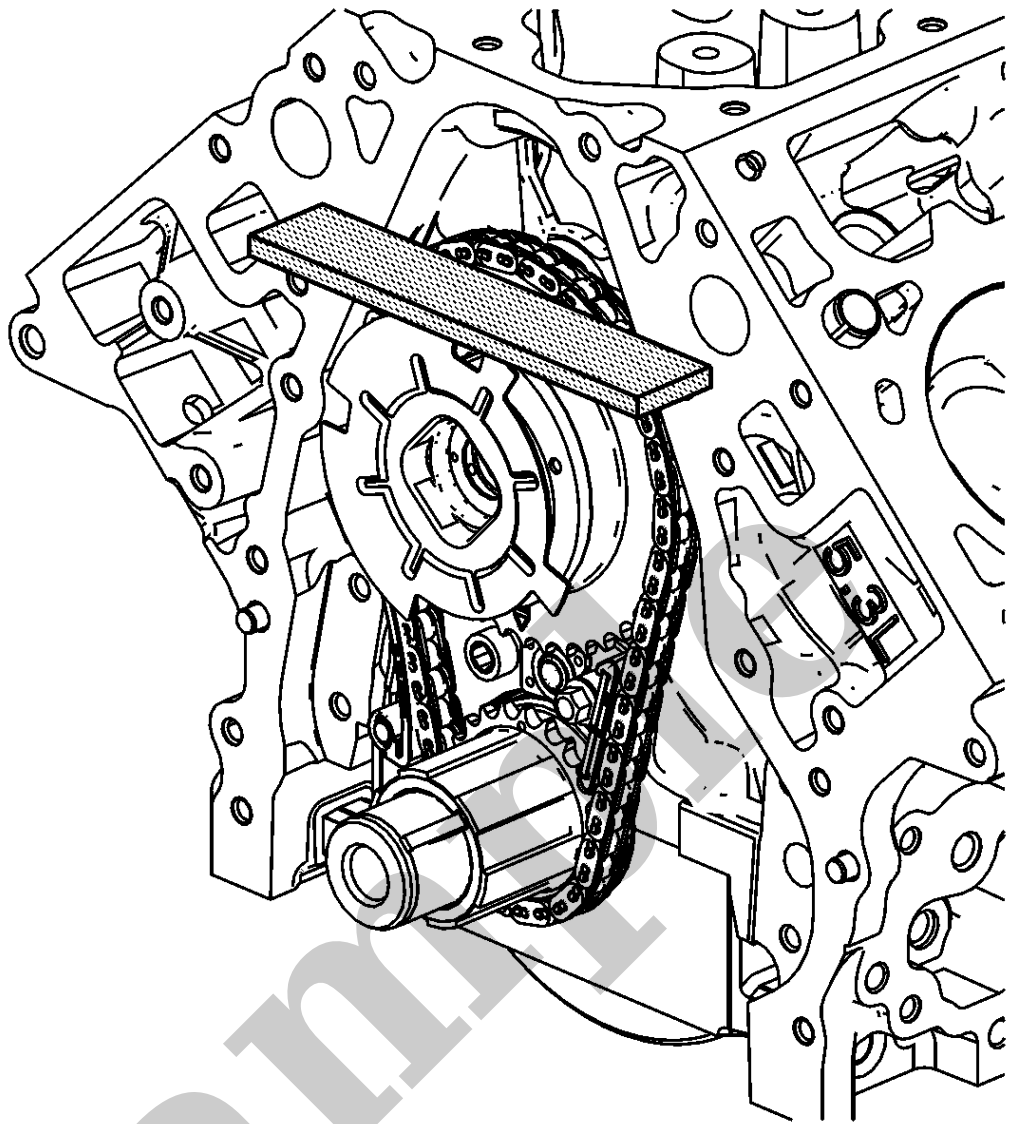
8.

#### NOTE

##### Note

- Properly locate the CMP actuator onto the locating pin of the camshaft.
- The sprocket teeth and timing chain must mesh
- The camshaft and the sprocket alignment marks MUST be aligned properly.
- Do not use the CMP solenoid valve again. Install a NEW valve during assembly.

Identify the alignment hole (1) in the rear face of the CMP actuator and the locating pin (2) on the front face of the camshaft.



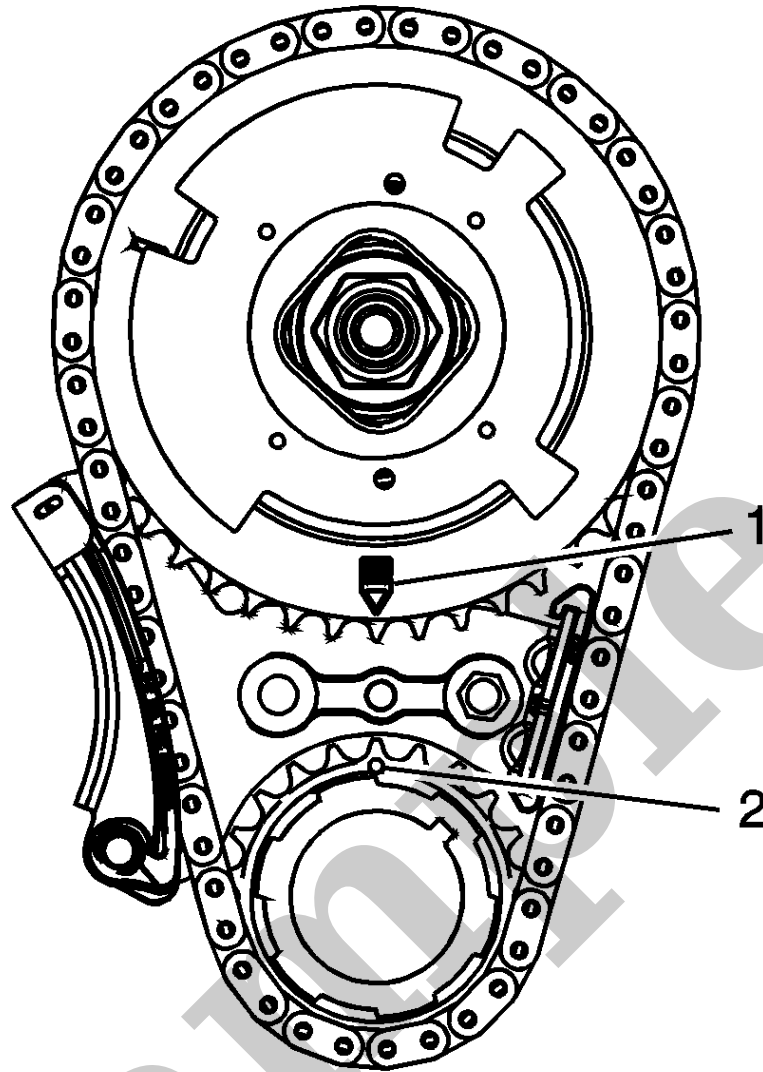
10.

#### NOTE

##### Note

It is possible to push the camshaft rearward when installing the CMP actuator. Verify that the camshaft lobes are centered in the valve lifter bores after the CMP actuator is installed.

Locate a straight edge across the front face of the engine block and inspect for proper installation of the CMP actuator and timing chain. With the CMP actuator properly and completely installed onto the front of camshaft, the timing chain will not protrude beyond the front face of engine block.



12.

Inspect the sprockets for proper alignment. The mark on the CMP actuator sprocket (1) should be located in the 6 o'clock position and the mark on the crankshaft sprocket (2) should be located in the 12 o'clock position.