

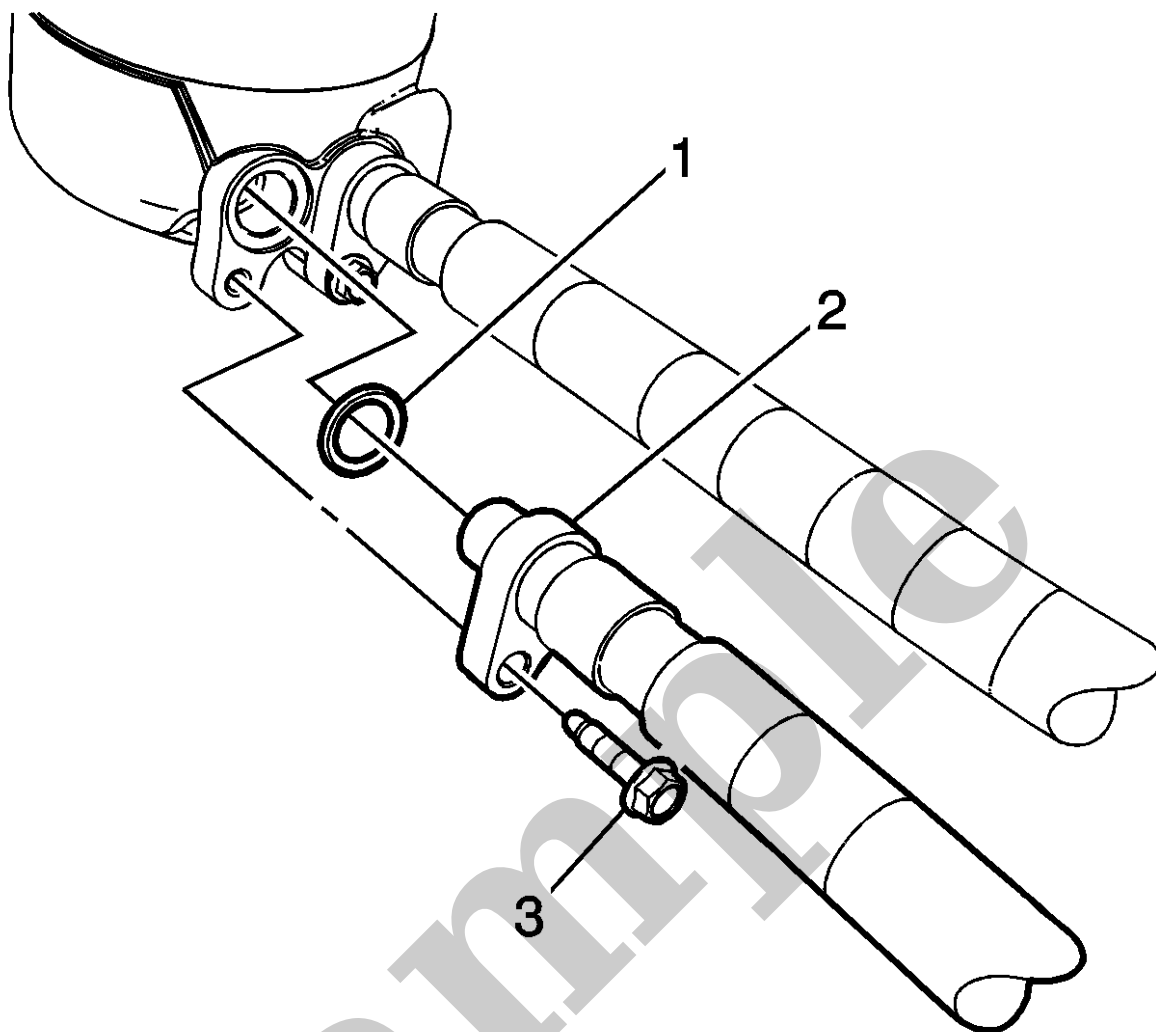
Your Ultimate Source for OEM Repair Manuals

FactoryManuals.net is a great resource for anyone who wants to save money on repairs by doing their own work. The manuals provide detailed instructions and diagrams that make it easy to understand how to fix a vehicle.

2005 CHEVROLET Colorado Regular Cab OEM Service and Repair Workshop Manual

[Go to manual page](#)

Sample



3.

NOTE

Note

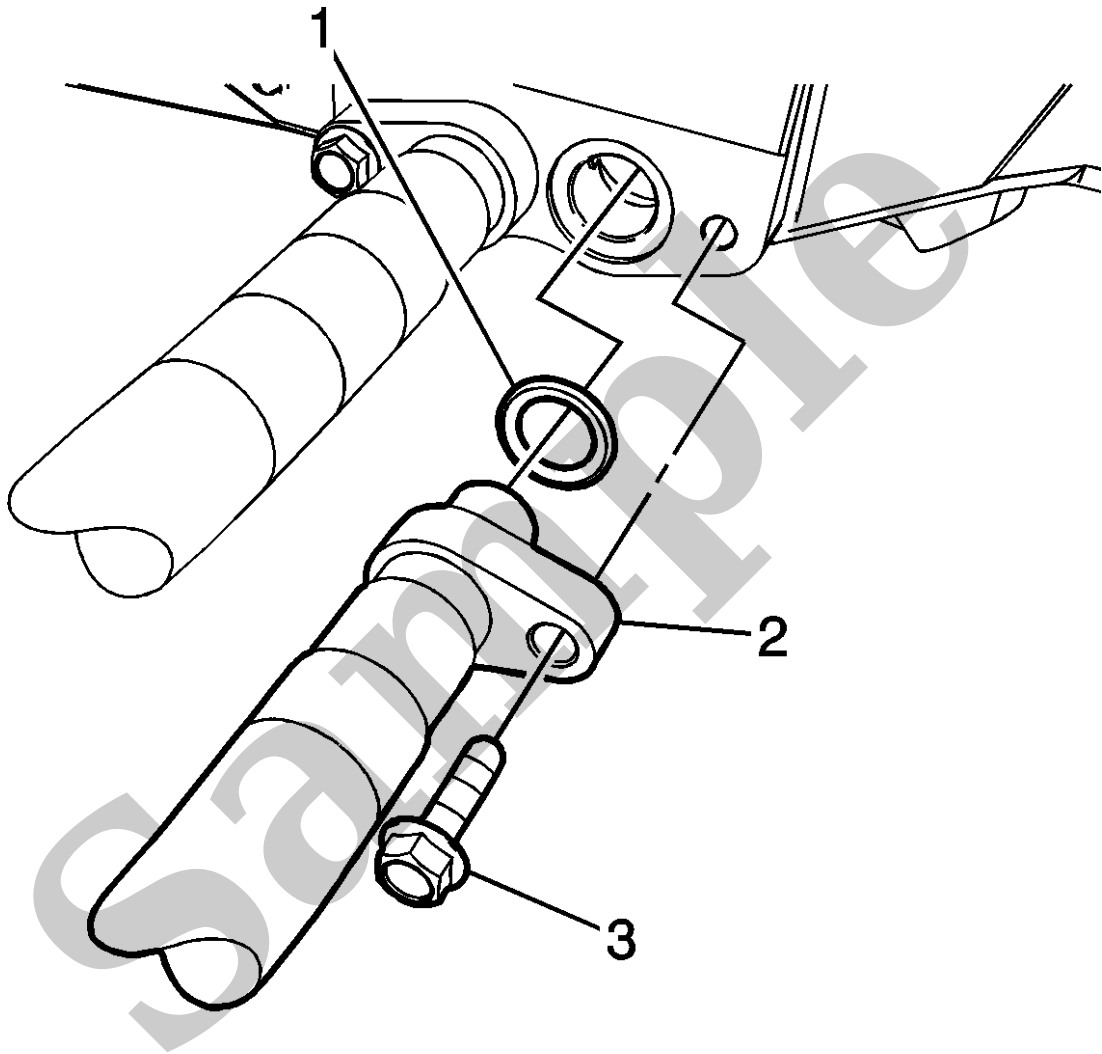
Anytime the oil tank inlet and outlet hoses are serviced, the oil seals must be replaced.

Remove the inlet hose to oil tank bolt (3) and disconnect the hose (2) from the oil tank. Discard the oil seal (1).

Note

If any malfunction is experienced that may have caused debris to enter the oil supply, NEW oil lines must be used.

Position the oil inlet hose.



2.

CAUTION

Caution

Refer to [Fastener Caution](#).

Using a new oil seal (1), install the oil inlet hose (2) and bolt (3) to the oil pan. Tighten the inlet hose to oil pan bolt to **22 N·m (16 lb ft)**.



YOUR CURRENT VEHICLE

Oil Tank Outlet Hose Replacement

Oil Tank Outlet Hose Replacement

Removal Procedure

1. Drain the engine oil. Refer to [Engine Oil and Oil Filter Replacement](#).
2. Remove the right front wheelhouse rear liner. Refer to [Front Wheelhouse Liner Replacement](#).