

Your Ultimate Source for OEM Repair Manuals

FactoryManuals.net is a great resource for anyone who wants to save money on repairs by doing their own work. The manuals provide detailed instructions and diagrams that make it easy to understand how to fix a vehicle.

2003 NISSAN Murano OEM Service and Repair Workshop Manual

[Go to manual page](#)

[GO TO 10.](#)

9. CHECK VCM

Check the VCM. Refer to [Work Flow](#).

Is the inspection result normal?

YES>>

[GO TO 11.](#)

NO>>

Repair or replace VCM. Refer to [VCM : Removal & Installation](#). [GO TO 11.](#)

10. CHECK ABS ACTUATOR AND ELECTRIC UNIT (CONTROL UNIT)

Check the ABS actuator and electric unit (control unit). Refer to [Work Flow](#).

Is the inspection result normal?

YES>>

[GO TO 11.](#)

NO>>

Repair or replace ABS actuator and electric unit (control unit). Refer to [ABS ACTUATOR AND ELECTRIC UNIT \(CONTROL UNIT\) : Removal & Installation](#). [GO TO 11.](#)

11. FINAL CHECK

Recheck the symptom and check that the symptom is not reproduced under the same conditions.

Is the inspection result normal?

YES>>

INSPECTION END

NO>>

[GO TO 1.](#)

Precaution for Supplemental Restraint System (SRS) "AIR BAG" and "SEAT BELT PRE-TENSIONER"

RDE-001897944

The Supplemental Restraint System such as "AIR BAG" and "SEAT BELT PRE-TENSIONER", used along with a front seat belt, helps to reduce the risk or severity of injury to the driver and front passenger for certain types of collisions.

Information necessary to service the system safely is included in the "SRS AIR BAG" and "SEAT BELT" sections of this Service Manual.

WARNING:

Always observe the following items for preventing accidental activation:

- To avoid rendering the SRS inoperative, which could increase the risk of personal injury or death in the event of a collision that would result in air bag inflation, it is recommended that all maintenance and repair be performed by an authorized NISSAN/INFINITI dealer.
- Improper repair, including incorrect removal and installation of the SRS, can lead to personal injury caused by unintentional activation of the system. For removal of Spiral Cable and Air Bag Module, see "SRS AIR BAG".
- Never use electrical test equipment on any circuit related to the SRS unless instructed to in this Service Manual. SRS wiring harnesses can be identified by yellow and/or orange harnesses or harness connectors.

PRECAUTIONS WHEN USING POWER TOOLS (AIR OR ELECTRIC) AND HAMMERS

WARNING:

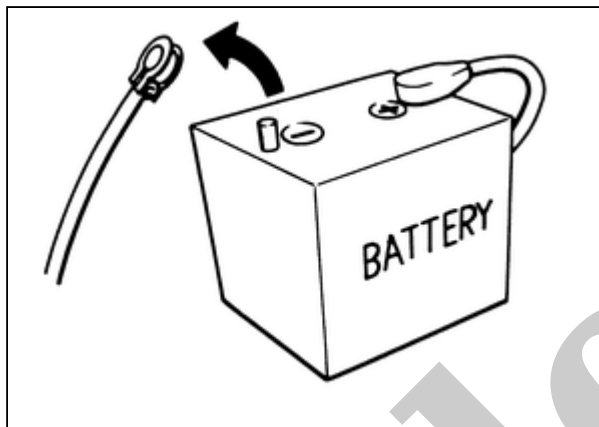
Always observe the following items for preventing accidental activation:

- When working near the Air Bag Diagnosis Sensor Unit or other Air Bag System sensors with the ignition/power switch ON or engine running, never use air or electric power tools or strike near the sensor(s) with a hammer. Heavy vibration could activate the sensor(s) and deploy the air bag(s), possibly causing serious injury.
- When using air or electric power tools or hammers, always switch the ignition/power switch OFF, disconnect the 12V battery or batteries, and wait at least 3 minutes before performing any service.

Precautions for Removing Battery Terminal

RDE-001897946

- With the adoption of Auto ACC function, ACC power is automatically supplied by operating the Intelligent Key or remote keyless entry or by opening/closing the driver side door. In addition, ACC power is supplied even after the ignition switch is in the OFF position, i.e. ACC power is supplied for a certain fixed time.
- When disconnecting the 12V battery terminal, place the ignition switch in the OFF position before disconnecting the 12V battery terminal, observing "How to disconnect 12V battery terminal" described below.



RDE-001833356-01-EF289H



NOTE:

Some ECUs operate for a certain fixed time even after ignition switch is in the OFF position and ignition power supply is stopped. If the battery terminal is disconnected before ECU stops, accidental DTC detection or ECU data damage may occur.

- For vehicles with the 2-batteries, be sure to connect the main battery and the sub battery before placing the ignition switch in the ON position.



NOTE:

If the ignition switch is in the ON position with any one of the terminals of main battery and sub battery disconnected, then DTC may be detected.

- After installing the 12V battery, always check "Self Diagnosis Result" of all ECUs and erase DTC.



NOTE:

The removal of 12V battery may cause a DTC detection error.

HOW TO DISCONNECT 12V BATTERY TERMINAL

Disconnect 12V battery terminal according to instruction described below.

1. Open the hood.
2. Place the ignition switch in the ON position.
3. Place the ignition switch in the OFF position with the driver side door opened.
4. Get out of the vehicle and close the driver side door.
5. Wait at least 3 minutes.

CAUTION:

While waiting, never operate the vehicle such as locking, opening, and closing doors. Violation of this caution results in the activation of ACC power supply according to the Auto ACC function.

6. Remove 12V battery terminal.

CAUTION:

After installing 12V battery, always check self-diagnosis results of all ECUs and erase DTC.

Sample

CAUTION:

- **Never change RAB system state ON/OFF without the consent of the customer.**
- **Turn the RAB system OFF in conditions similar to driving, such as free rollers or a chassis dynamometer.**

Sample

Wiring Diagram

Click link to [Wiring Diagram](#)

Sample

Always perform the rear automatic braking system action test to check that the system operates normally after replacing the ADAS control unit 2 or repairing any rear automatic braking system malfunction.

1. CHECK REAR AUTOMATIC BRAKING SYSTEM SETTING

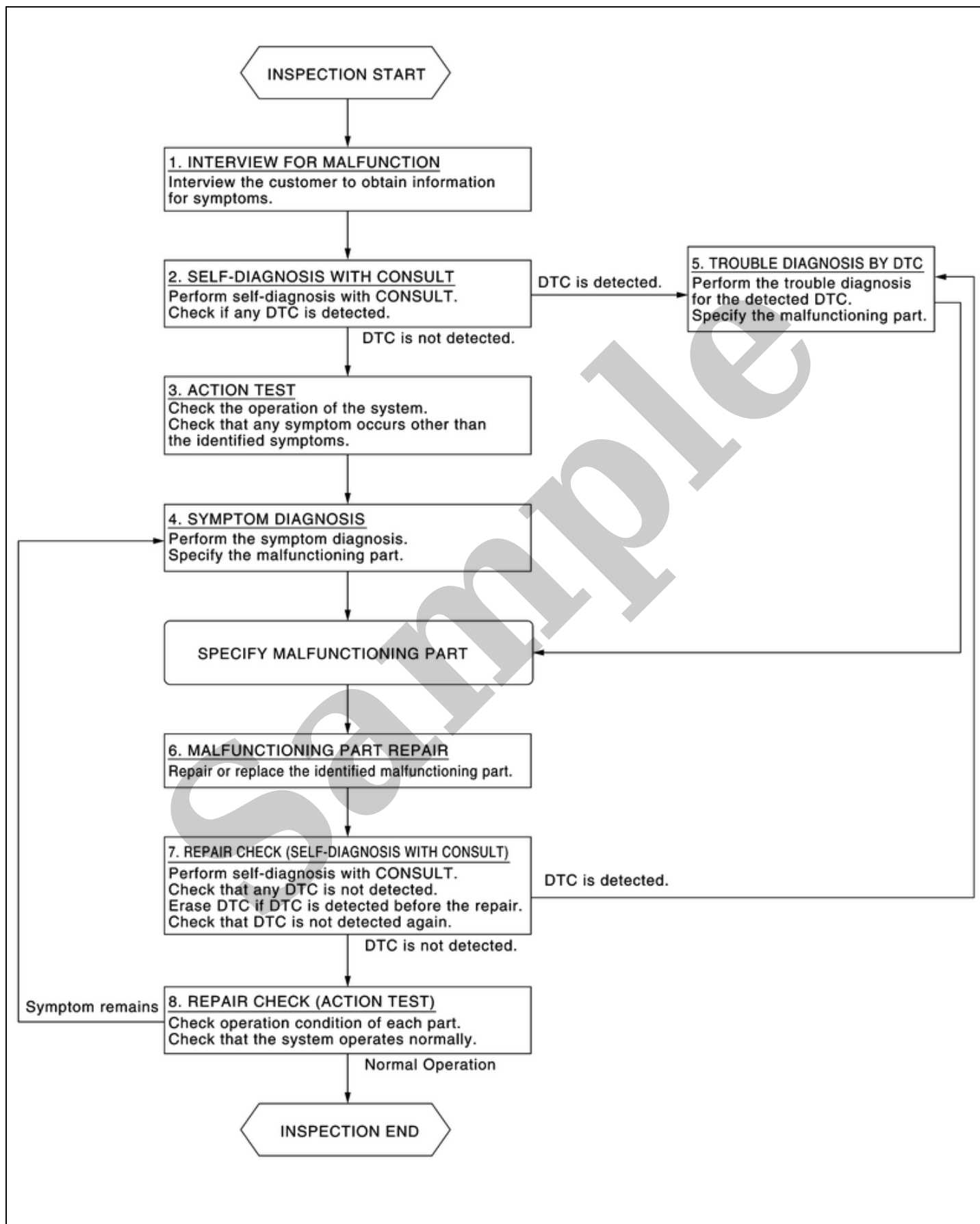
1. Set the vehicle to READY.
2. Check that the rear automatic braking system setting can be enabled/disabled on the combination meter.

>>

INSPECTION END

Sample

OVERALL SEQUENCE



SIEMD-6758759-02-SOIA0485GB

DETAILED FLOW

1. INTERVIEW FOR MALFUNCTION

It is also important to clarify the customer concerns before starting the inspection. Interview the customer about the concerns carefully and understand the symptoms fully.



NOTE:

The customers are not professionals. Never assume that “maybe the customer means…” or “maybe the customer mentioned this symptom”.

>>

[GO TO 2.](#)

2. SELF-DIAGNOSIS WITH CONSULT

1. Perform “All DTC Reading” with CONSULT.
2. Check if the DTC is detected on the self-diagnosis results of following.
 - “ICC/ADAS 2”

Is any DTC detected?

YES>>

Record or print self-diagnosis results and freeze frame data (FFD). [GO TO 5.](#)

NO>>

[GO TO 3.](#)

3. ACTION TEST

Perform RAB system action test to check the operation status. Refer to [Work Procedure](#).

Check if any other malfunctions occur.

>>

[GO TO 4.](#)

4. SYMPTOM DIAGNOSIS

Perform the applicable diagnosis according to the diagnosis chart by symptom. Refer to [Symptom Table](#).

>>

[GO TO 6.](#)

5. TROUBLE DIAGNOSIS BY DTC

1. Erase self-diagnostic results.
2. Ignition switch OFF → ON.

CAUTION:

Be sure to wait of 10 seconds after turning ignition switch OFF or ON.

3. Check the DTC in the self-diagnosis results.
4. Perform trouble diagnosis for the detected DTC following.
 - “ICC/ADAS 2”: Refer to [DTC Index](#).