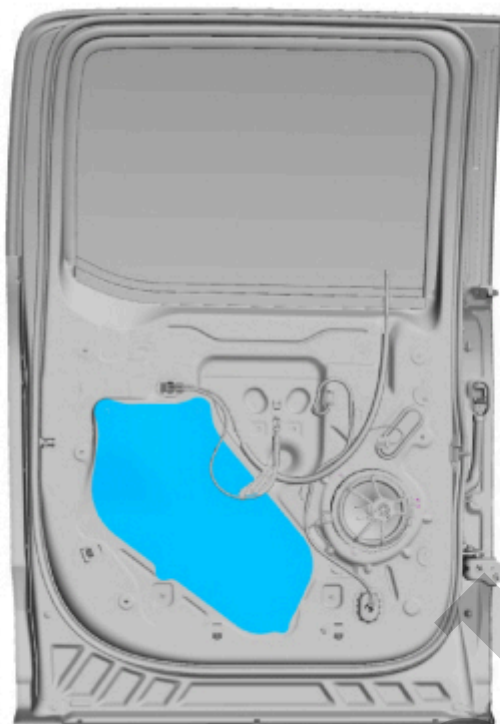


# Your Ultimate Source for OEM Repair Manuals

FactoryManuals.net is a great resource for anyone who wants to save money on repairs by doing their own work. The manuals provide detailed instructions and diagrams that make it easy to understand how to fix a vehicle.

## 2003 FORD F-150 Regular Cab OEM Service and Repair Workshop Manual

[Go to manual page](#)



E334066

[Click here to learn about symbols, color coding, and icons used in this manual.](#)

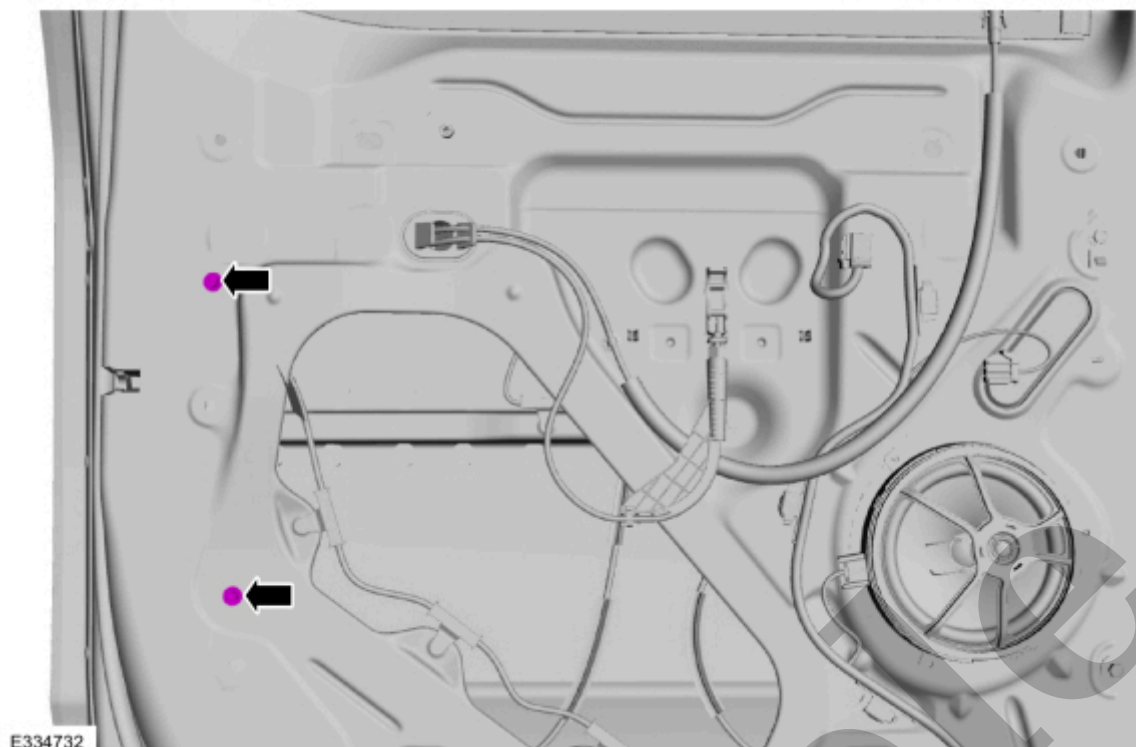
4. Remove the rear door window regulator adhesive cover.



E334945

[Click here to learn about symbols, color coding, and icons used in this manual.](#)

5. Position the rear door window regulator aside.



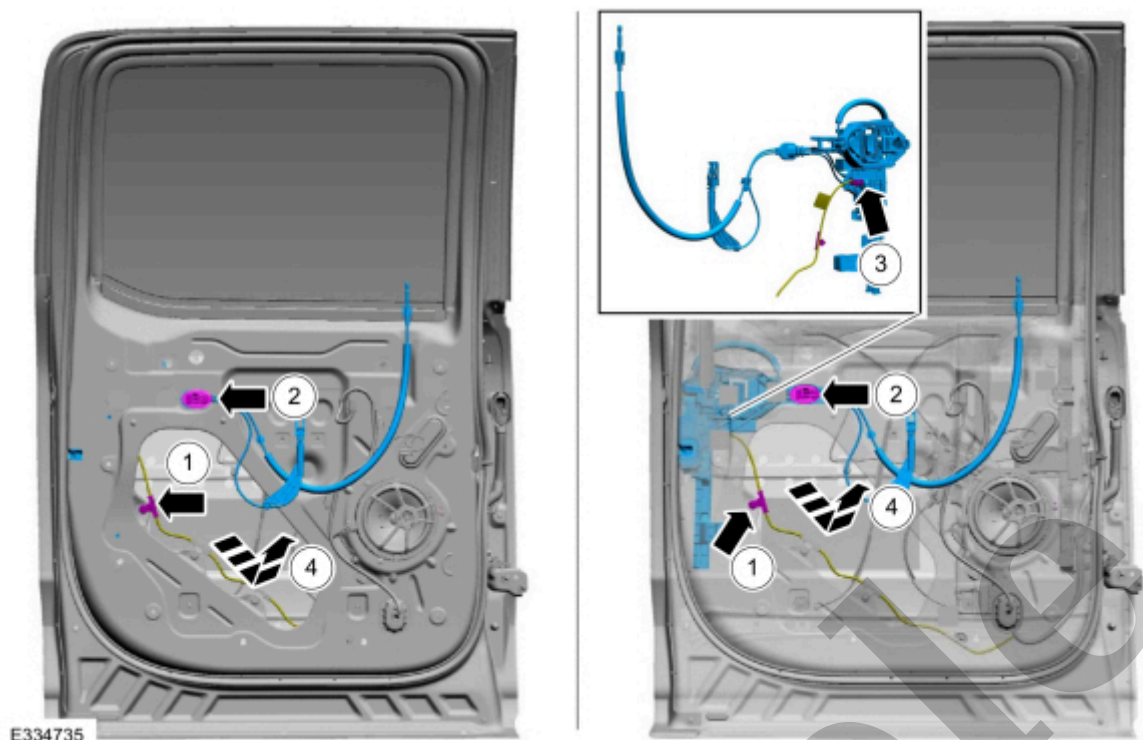
[Click here to learn about symbols, color coding, and icons used in this manual.](#)

7. Remove the screw from the exterior rear door handle reinforcement.

***Torque*** : 62 lb.in (7 Nm)



[Click here to learn about symbols, color coding, and icons used in this manual.](#)



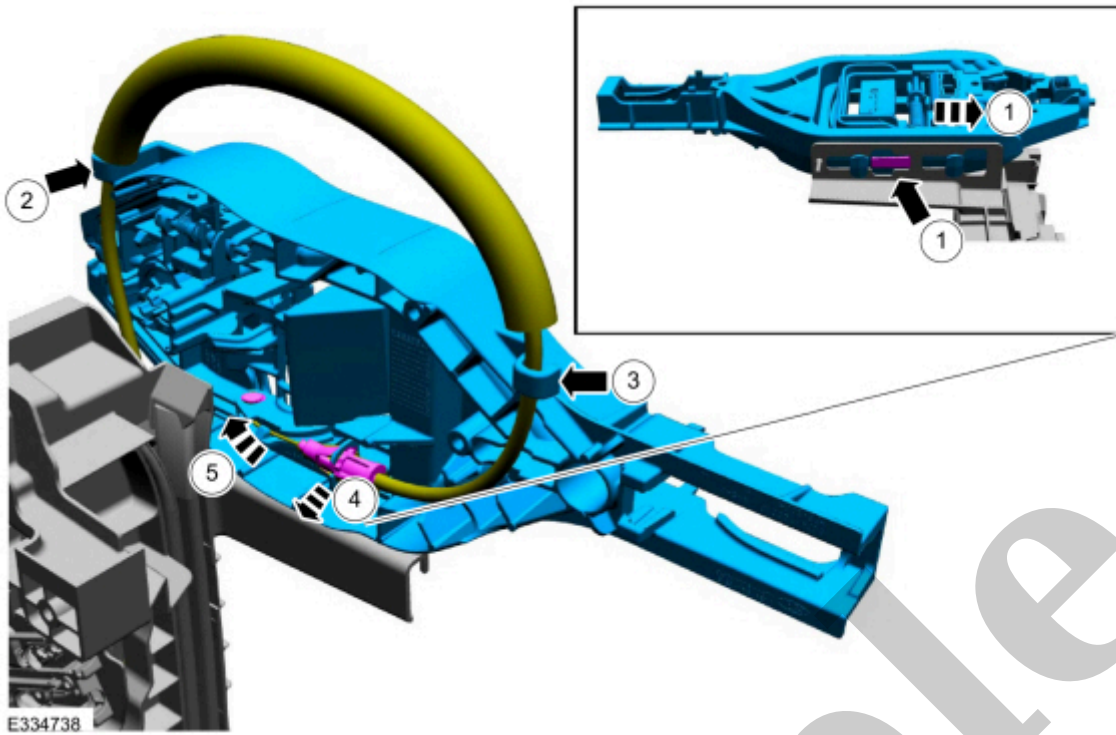
[Click here to learn about symbols, color coding, and icons used in this manual.](#)

#### 10. NOTE

This step is only necessary when installing a new component.

Release the cable tension by turning the release screw until the handle lever releases from the stop.

1. Turn the release screw until the handle lever releases from the stop.
2. Release the handle lever from the stop.



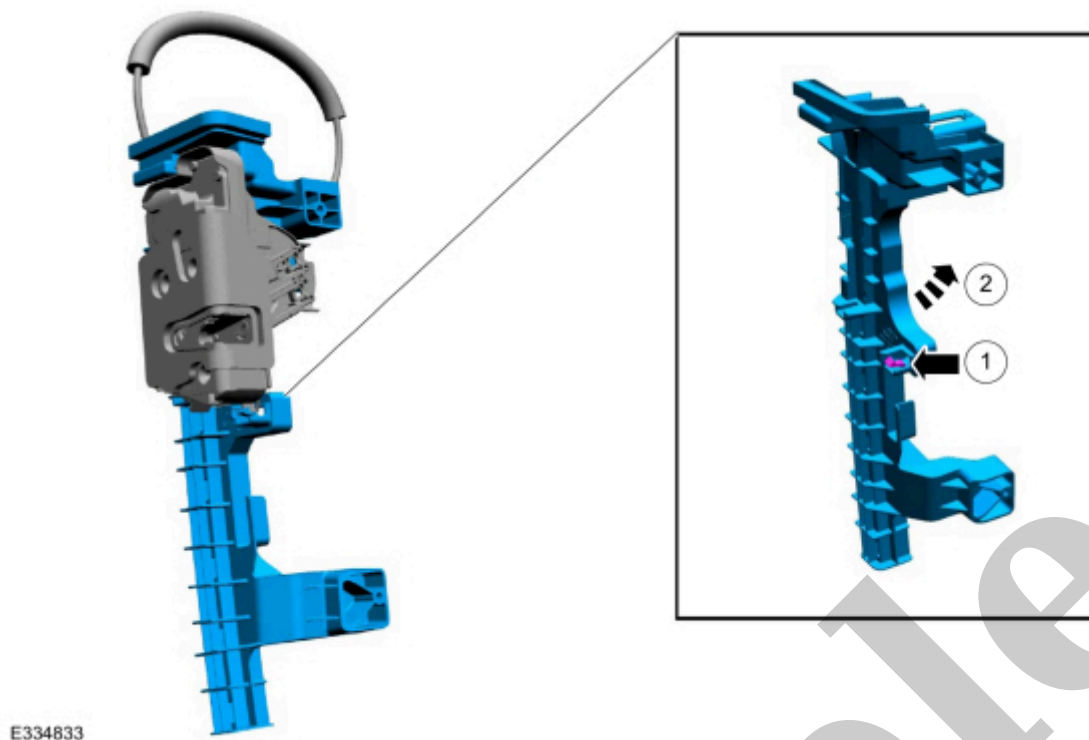
[Click here to learn about symbols, color coding, and icons used in this manual.](#)

## 12. NOTE

This step is only necessary when installing a new component.

Remove the interior rear door handle cable and rear door latch lock indicator cable.

1. Remove the screw, the rear door latch lock indicator cable and the interior rear door handle cable access cover.
2. Remove the rear door latch lock indicator cable.
3. Remove the interior rear door handle cable.



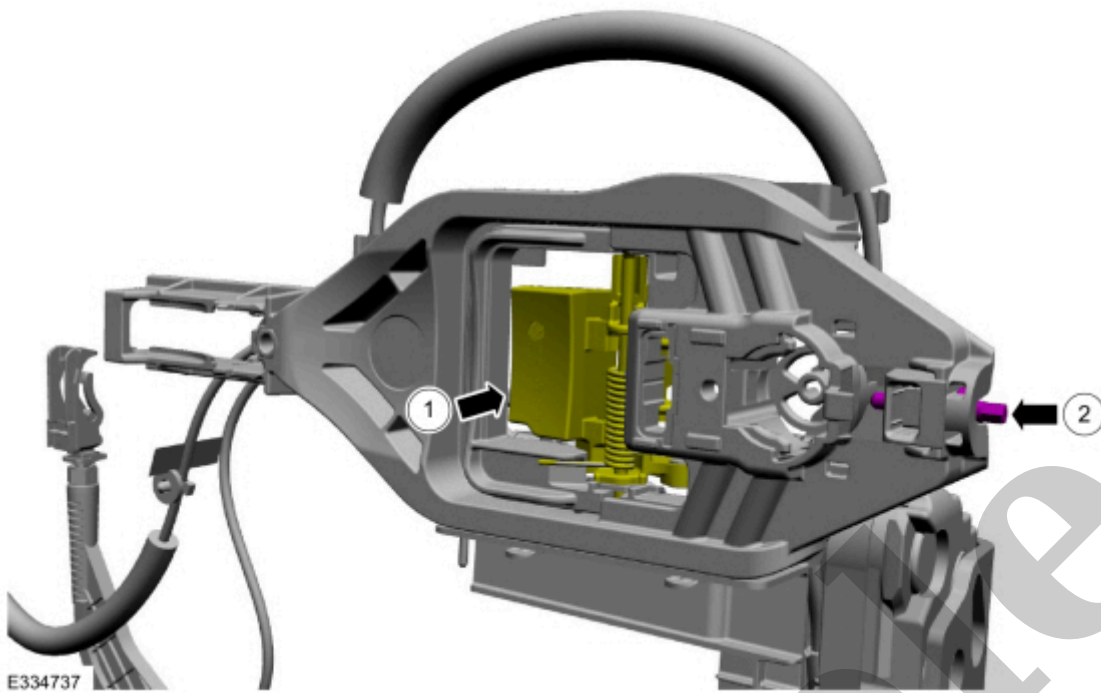
[Click here to learn about symbols, color coding, and icons used in this manual.](#)

14. **NOTE**

This step is only necessary when installing a new component.

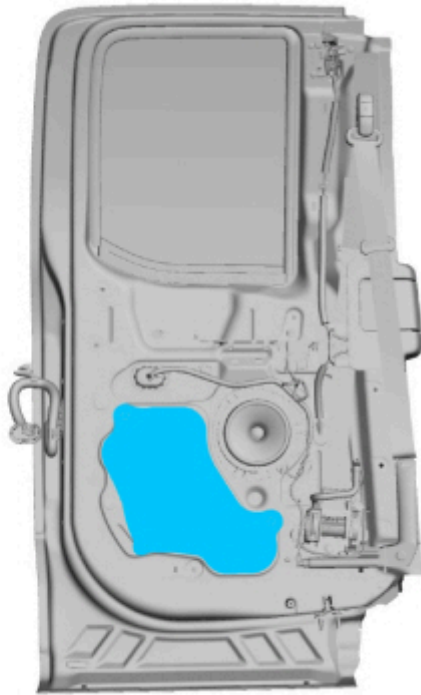
Remove the exterior rear door handle reinforcement to rear door latch cable.

1. Remove the exterior rear door handle reinforcement to rear door latch cable screw.
2. Remove the exterior rear door handle reinforcement to rear door latch cable access cover.
3. Remove the exterior rear door handle reinforcement to rear door latch cable from the mounting bracket.
4. Remove the exterior rear door handle reinforcement to rear door latch cable end.



[Click here to learn about symbols, color coding, and icons used in this manual.](#)

Copyright © Ford Motor Company

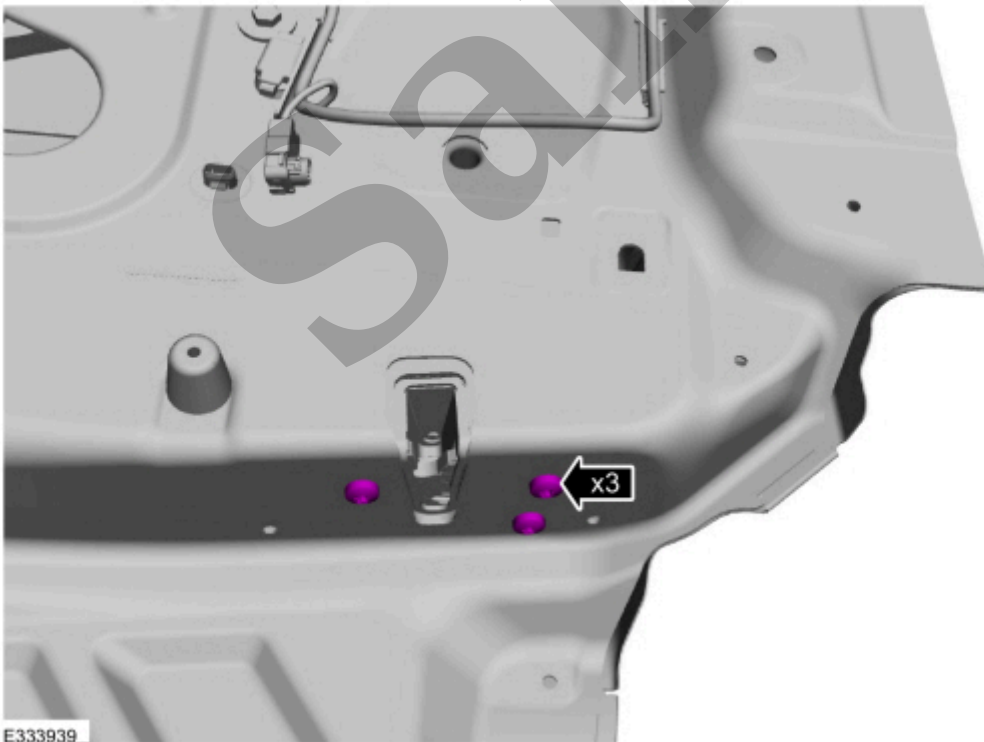


E333938

[Click here to learn about symbols, color coding, and icons used in this manual.](#)

3. Remove the rear door lower latch bolts.

**Torque** : 106 lb.in (12 Nm)



E333939

[Click here to learn about symbols, color coding, and icons used in this manual.](#)





## Rear Door Upper Latch - SuperCab

<b>501-14 Handles, Locks, Latches and Entry Systems</b>	<b>2022 F-150</b>
<b>Removal and Installation</b>	<b>Procedure revision date: 03/4/2021</b>

### Rear Door Upper Latch - SuperCab

#### Removal

##### NOTE

Left hand (LH) shown, right hand (RH) similar.

##### NOTE

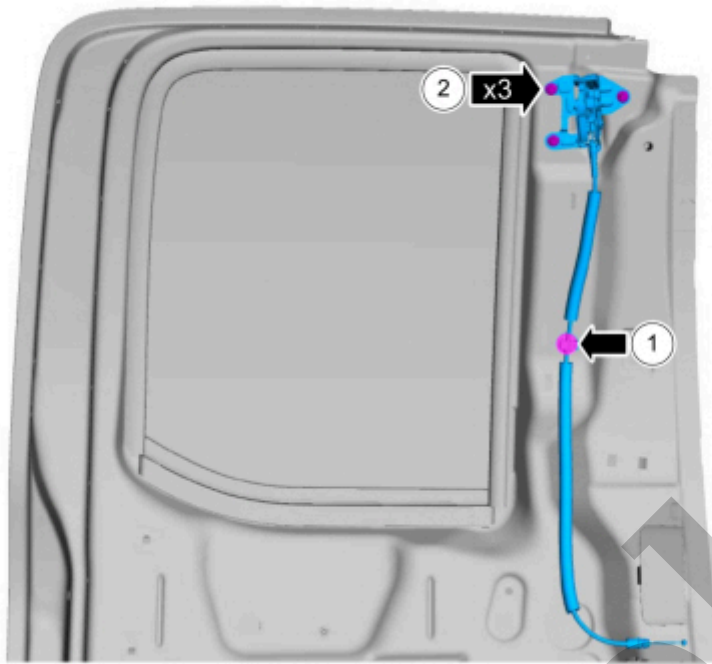
Removal steps in this procedure may contain installation details.

1. Remove the rear door trim panel.

Refer to: [Rear Door Trim Panel - SuperCab](#)(501-05 Interior Trim and Ornamentation, Removal and Installation).

2. Disconnect the rear door upper latch cable.

1. Remove the rear door upper latch cable from the cable bracket.
2. Remove the rear door upper latch cable end from the interior rear door handle.



E354831

[Click here to learn about symbols, color coding, and icons used in this manual.](#)

### Installation

1. To install, reverse the removal procedure.

Copyright © Ford Motor Company