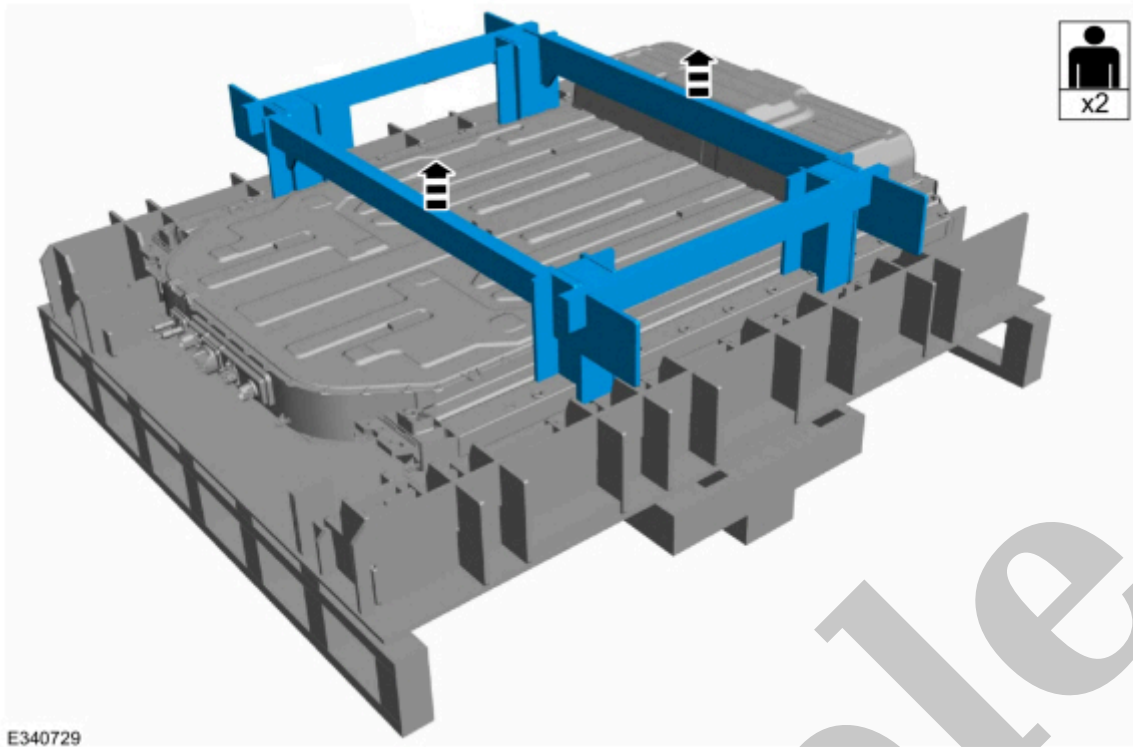


Your Ultimate Source for OEM Repair Manuals

FactoryManuals.net is a great resource for anyone who wants to save money on repairs by doing their own work. The manuals provide detailed instructions and diagrams that make it easy to understand how to fix a vehicle.

1997 FORD Maverick SWB OEM Service and Repair Workshop Manual

[Go to manual page](#)



E340729

[Click here to learn about symbols, color coding, and icons used in this manual.](#)

10. **NOTE**

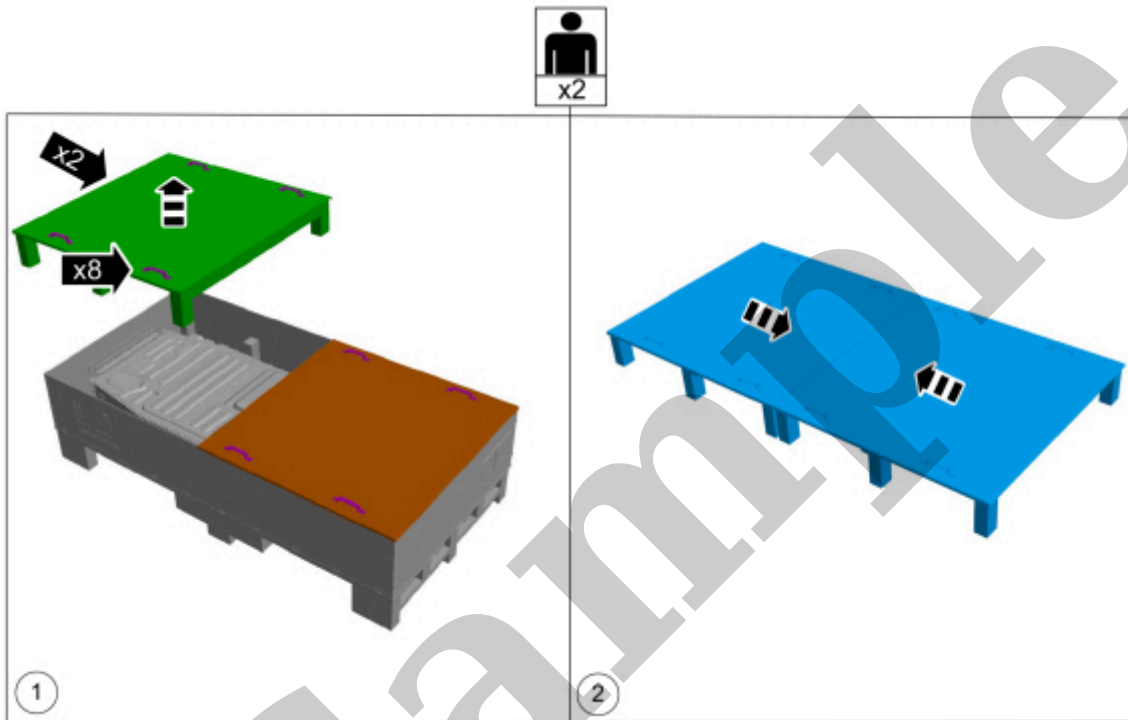
Use an upper cover from the shipping crate for the top of the support table stand.

Place an upper cover from the shipping crate on top of the HVB (High Voltage Battery) support table.

12. **NOTE**

Use the upper covers from the shipping crate to support the high voltage battery.

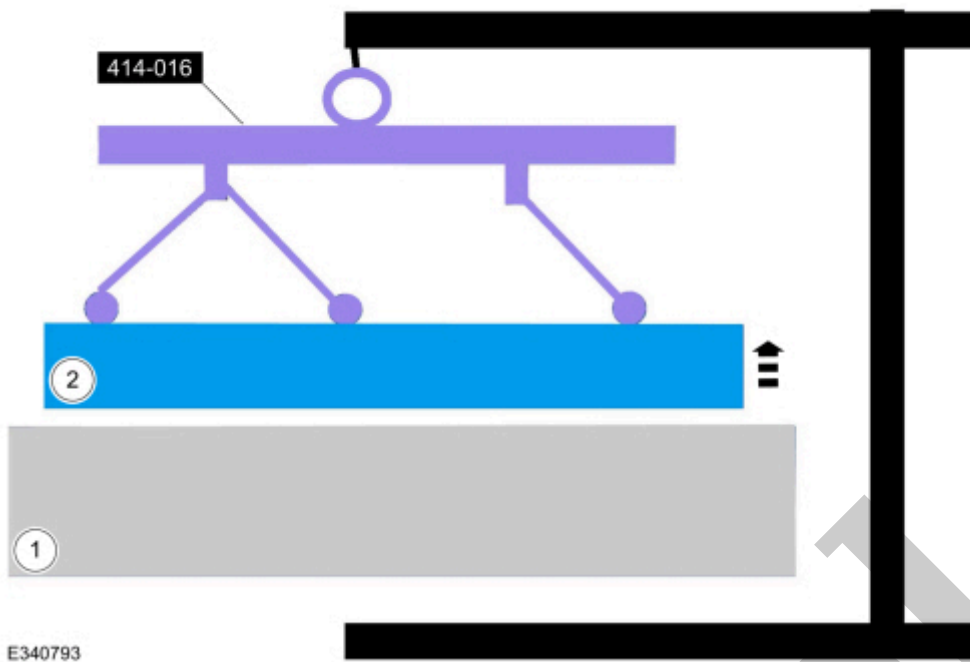
1. With the aid of an assistant, remove the upper covers of the HVB (High Voltage Battery) shipping crate and position aside.
2. Position the upper covers of the HVB (High Voltage Battery) shipping crate to create a support table for the HVB (High Voltage Battery) .



E381125

[Click here to learn about symbols, color coding, and icons used in this manual.](#)

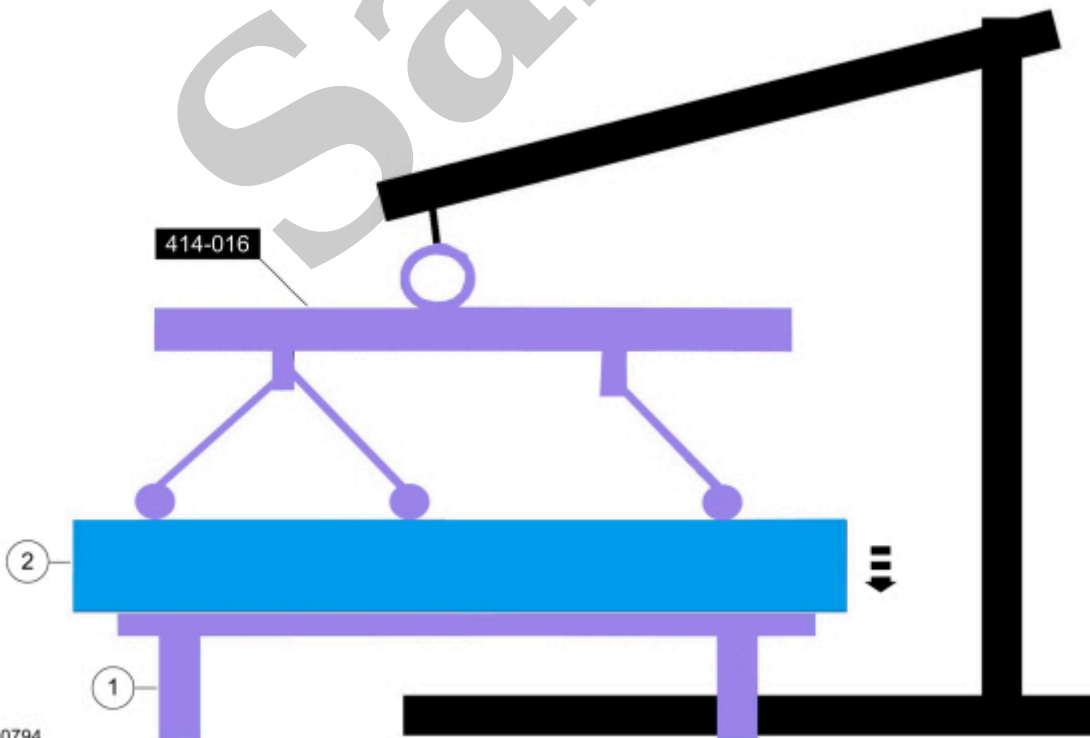
13. Remove the HVB (High Voltage Battery) bolts from the shipping crate.



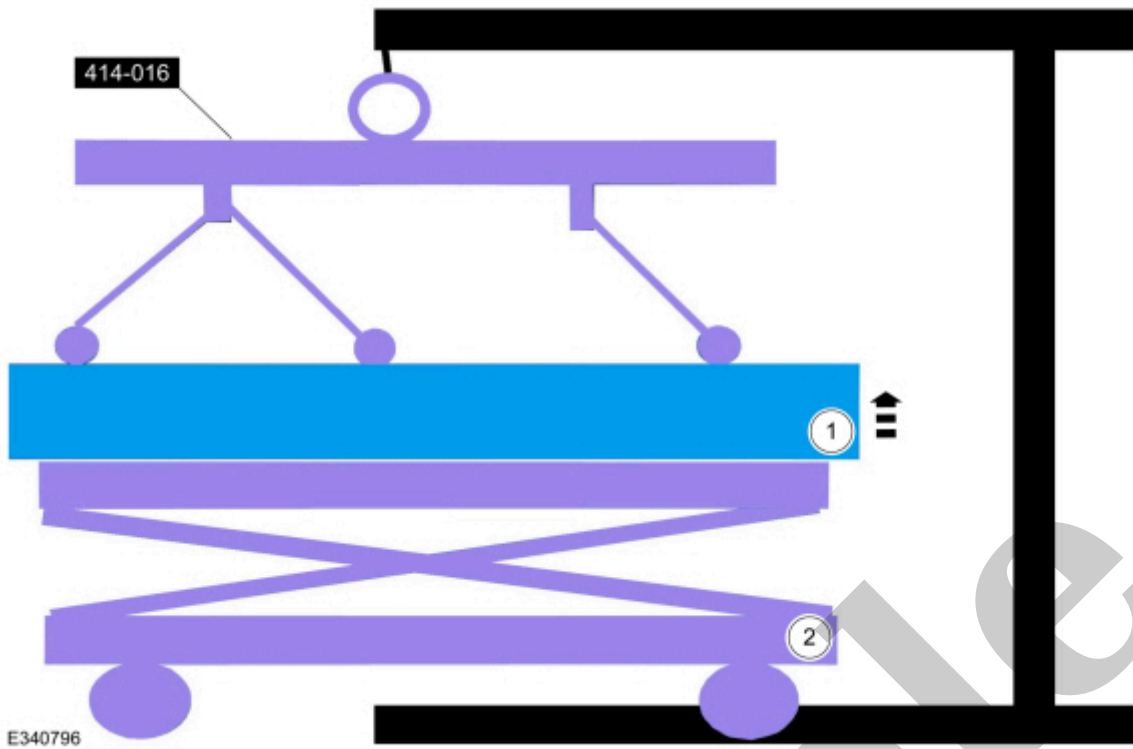
E340793

[Click here to learn about symbols, color coding, and icons used in this manual.](#)

15. 1. HVB (High Voltage Battery) support table
 2. HVB (High Voltage Battery)
- Place the new HVB (High Voltage Battery) on the HVB (High Voltage Battery) support table.

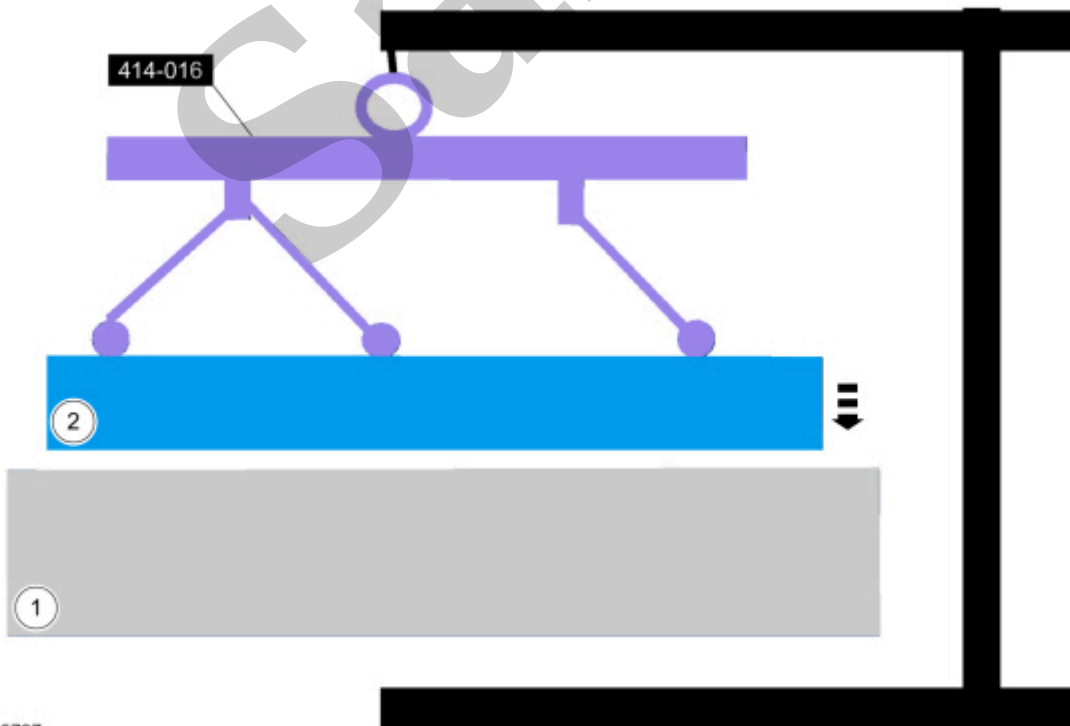


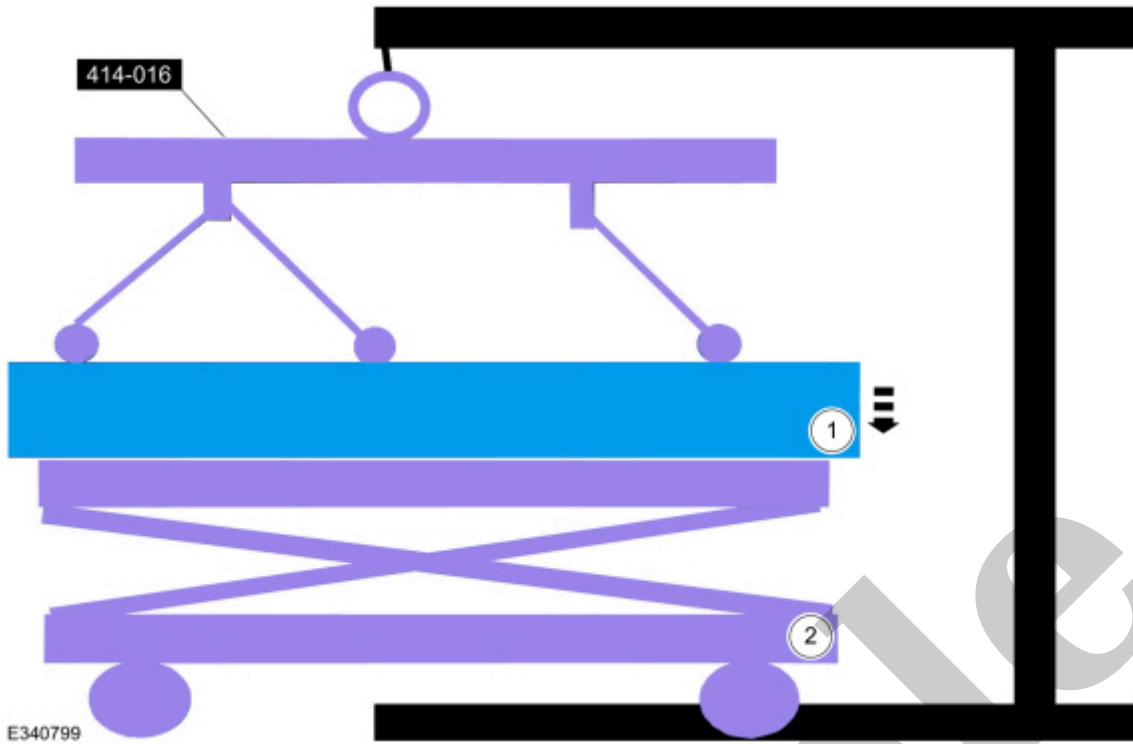
E340794



[Click here to learn about symbols, color coding, and icons used in this manual.](#)

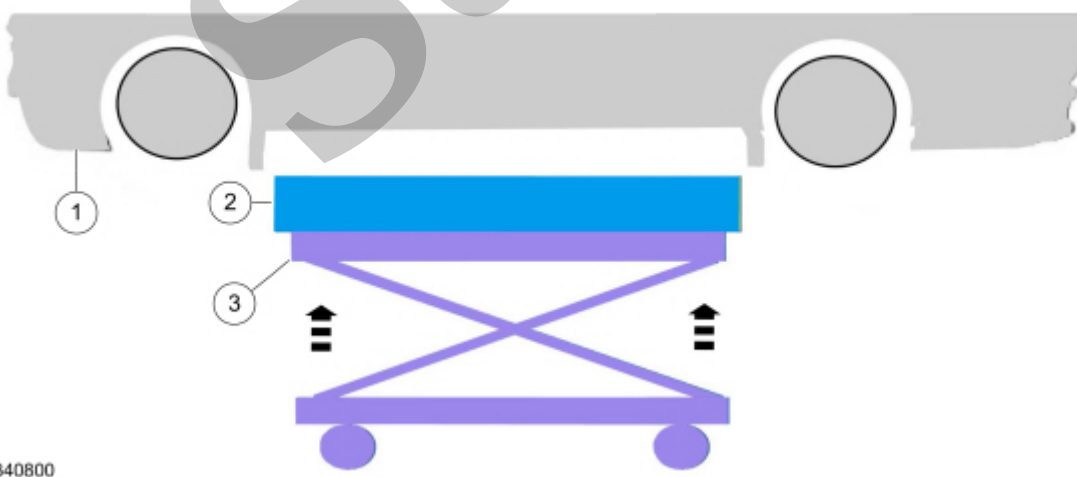
18. 1. HVB (High Voltage Battery) shipping crate
2. HVB (High Voltage Battery)
 - Place the service HVB (High Voltage Battery) inside the HVB (High Voltage Battery) shipping crate.





[Click here to learn about symbols, color coding, and icons used in this manual.](#)

21. 1. Vehicle
 2. HVB (High Voltage Battery)
 3. Powertrain lift table
- Using the powertrain lift table, raise the new HVB (High Voltage Battery) to the vehicle.



[Click here to learn about symbols, color coding, and icons used in this manual.](#)

High Voltage Battery Leak Test - Electric

414-03A High Voltage Battery, Mounting and Cables	2022 F-150
General Procedures	Procedure revision date: 10/18/2022

High Voltage Battery Leak Test - Electric

Leak detection

NOTE

This test is meant to be a secondary check after a service procedure is performed on the high voltage battery when a seal is disturbed. It is important to follow the workshop manual service procedure to verify a high voltage battery is sealed correctly.

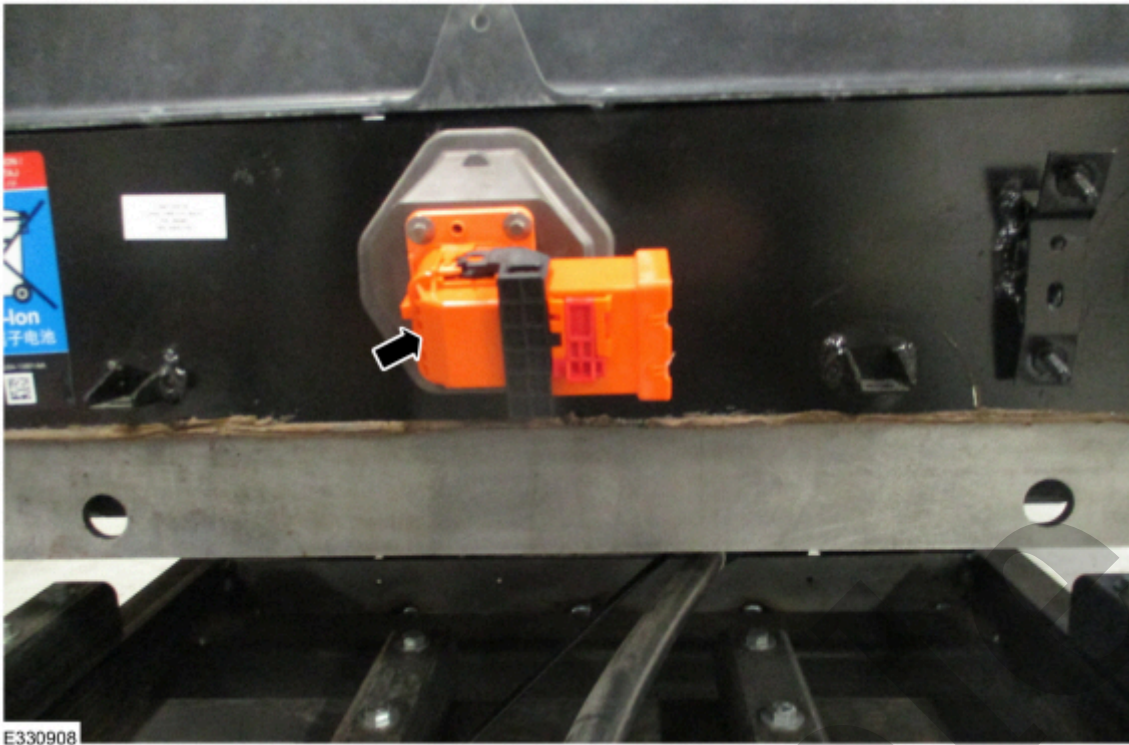
Special Tool(s) / General Equipment

- VACUTECH® Smoke Machine Fuel EVAP (evaporative emission) Emissions System Tester (or equivalent)
- SNOOP Solution
- Large Adhesive Bandage
- Tape
- Shop Air Supply

All Battery Packs

- To begin the setup, make sure the high voltage battery is removed from the vehicle and placed in an accessible area where there is room to walk around the entire pack. The high voltage battery cover should be installed and sealed according to the workshop manual procedure.

BEV-A Battery Pack



[Click here to learn about symbols, color coding, and icons used in this manual.](#)

BEV-G Battery Pack

5. NOTICE

To prevent damage to the high voltage battery sealing surface only use a non-marring tool to remove the vent patch.

Remove and discard the vent patch cover.

[Click here to learn about symbols, color coding, and icons used in this manual.](#)

PHEV-A Battery Pack

7. NOTE

If equipped.

Remove the high voltage battery rear outer shield and vent tube.



E357740

[Click here to learn about symbols, color coding, and icons used in this manual.](#)

8. Connect the pressure test connectors to the high voltage battery.

Use Special Service Tool : 414-013 Leak Test Adapter , 414-012 Leak Test Adapter , 414-011 Leak Test Adapter

[Click here to learn about symbols, color coding, and icons used in this manual.](#)

All Battery Packs

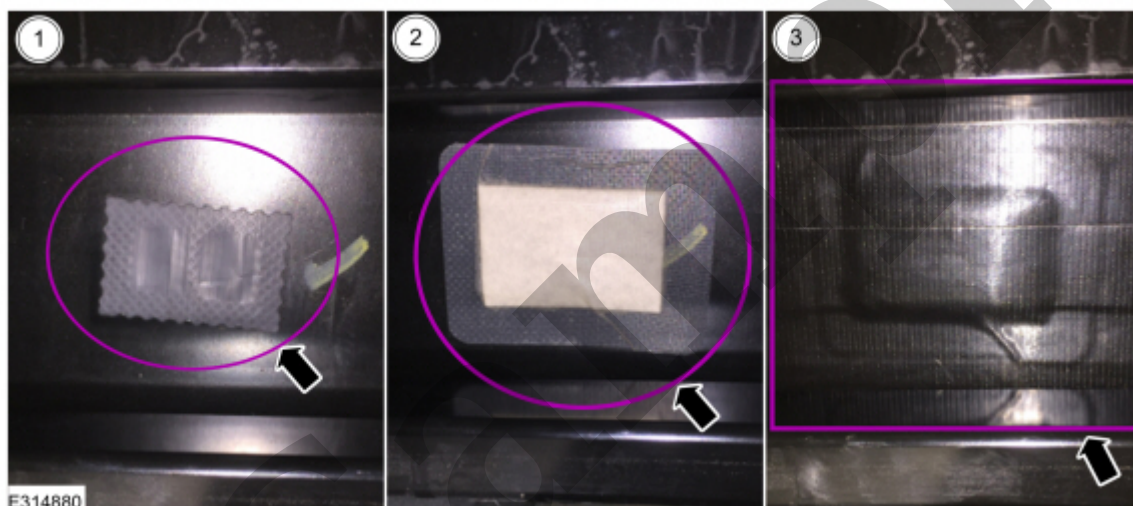
NOTE

PHEV-C battery pack shown, other battery packs similar.

10. NOTICE

To prevent damage to the vent patch It is important that the non-adhesive bandage be properly sized so that it completely covers the vent patch.

Seal the vent patch by placing a large adhesive bandage directly over the Vent Patch. The patch must be completely be covered by the bandage. Cover the bandage using duct tape or gorilla tape.



[Click here to learn about symbols, color coding, and icons used in this manual.](#)

11. NOTICE

To prevent damage to the high voltage battery pack make sure that the VACUTEC® Smoke Machine Fuel EVAP (evaporative emission) Emissions System Tester is set to Test and not Smoke. If the machine being used does not have a selection to test without smoke reference the user manual to remove the smoke container and empty the fluid into a clean container and reinstall the container into the machine. Purge all the smoke from the machine by pressing the power button and wait several minutes until no more can be seen exiting the outlet hose.