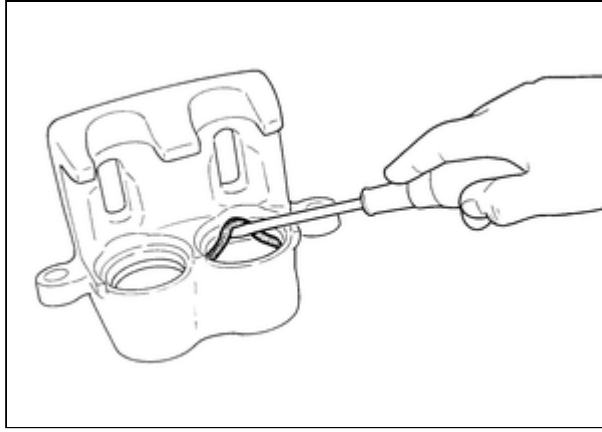


Your Ultimate Source for OEM Repair Manuals

FactoryManuals.net is a great resource for anyone who wants to save money on repairs by doing their own work. The manuals provide detailed instructions and diagrams that make it easy to understand how to fix a vehicle.

1995 NISSAN Sunny Traveller OEM Service and Repair Workshop Manual

[Go to manual page](#)



RPR-001824875-03-FIA0141E

CAUTION:

Be careful not to damage a cylinder inner wall.

6 Remove bleeder valve and cap.

7 Perform inspection after disassembly. Refer to [Inspection](#).

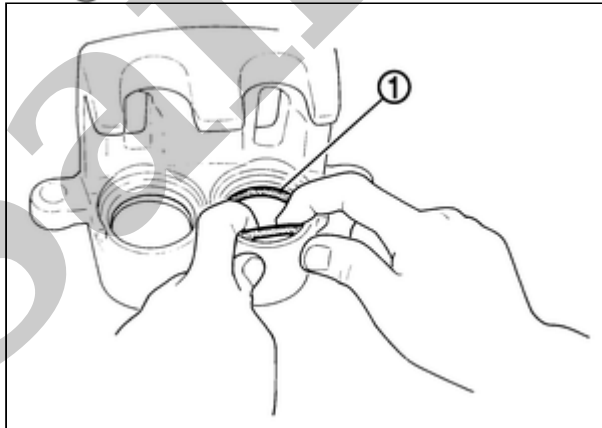
ASSEMBLY

CAUTION:

Never drop parts.

1 Install bleeder valve and cap.

2 Apply Nissan rubber grease to piston seals ①, and install them to cylinder body.

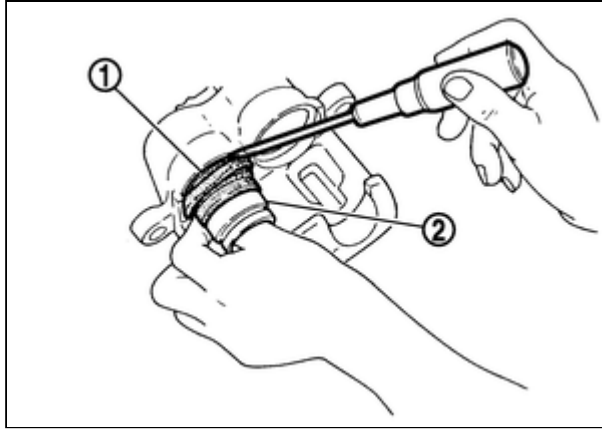


RPR-001824875-04-PFIA0032ZZ

CAUTION:

Never reuse piston seals.

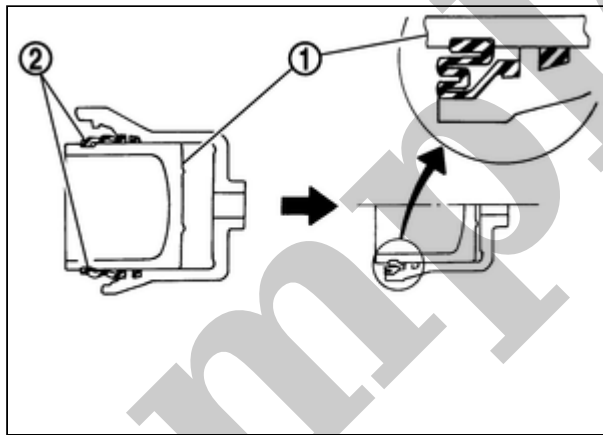
3 Apply Nissan rubber grease to piston boots ①. Cover piston end ② with piston boot, and then install cylinder side lip of piston boot securely into groove on cylinder body.



RPR-001824875-05-PFIA0033ZZ

CAUTION:
Never reuse piston boots.

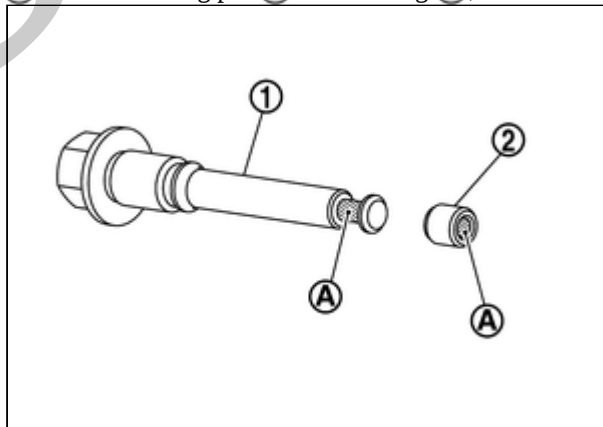
4 Apply new brake fluid to pistons (1). Push piston into cylinder body and then install piston-side lip of piston boot (2) into the piston groove.



RPR-001824875-06-PFIA0034ZZ

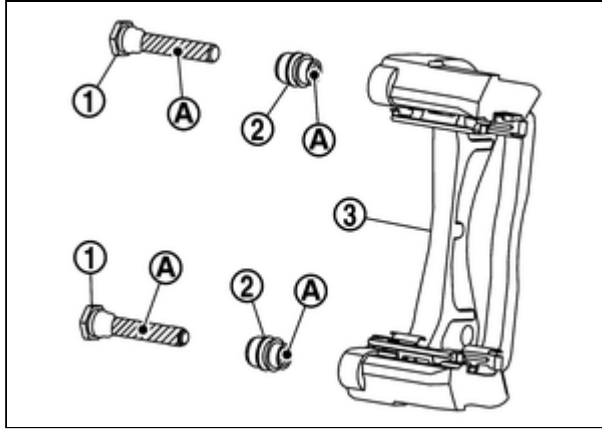
CAUTION:
Press the pistons evenly and vary the pressing point to prevent cylinder inner wall from being rubbed.

5 Apply rubber grease to mating faces (A) between sliding pin (1) and bushing (2), and install bushing to sliding pin.



RPR-001824875-07-SFIA0497ZZ

6 Apply rubber grease to mating faces (A) between sliding pins (1) and sliding pin boots (2), and install sliding pins and sliding pin boots to torque member (3).



RPR-001824875-08-000347635

7 Install cylinder body to torque member and tighten sliding pin bolts to the specified torque.

Sample

INSPECTION AFTER DISASSEMBLY

Check the following items and replace if necessary.

Cylinder Body

Check cylinder inner wall for rust, wear, cracks or damage.

CAUTION:

Always clean with new brake fluid. Never clean with mineral oil such as gasoline and diesel fuel.

Torque Member

Check the torque member for rust, wear, cracks or damage.

Pistons

Check surface of piston for rust, wear, cracks or damage.

CAUTION:

Piston sliding surface is plated. Never polish with sandpaper.

Sliding Pin, Sliding Pin Boot and Bushing

Check sliding pins, sliding pin boots and bushing for rust, wear, cracks or damage.

INSPECTION AFTER INSTALLATION

1 Check front disc brake for dragging. If any drag is found, follow the procedure described below.

2 Remove brake pads. Refer to [Removal and Installation](#).

3 Return pistons caliper. Refer to [Removal and Installation](#).

4 Install brake pad. Refer to [Removal and Installation](#).

5 Depress the brake pedal several times.

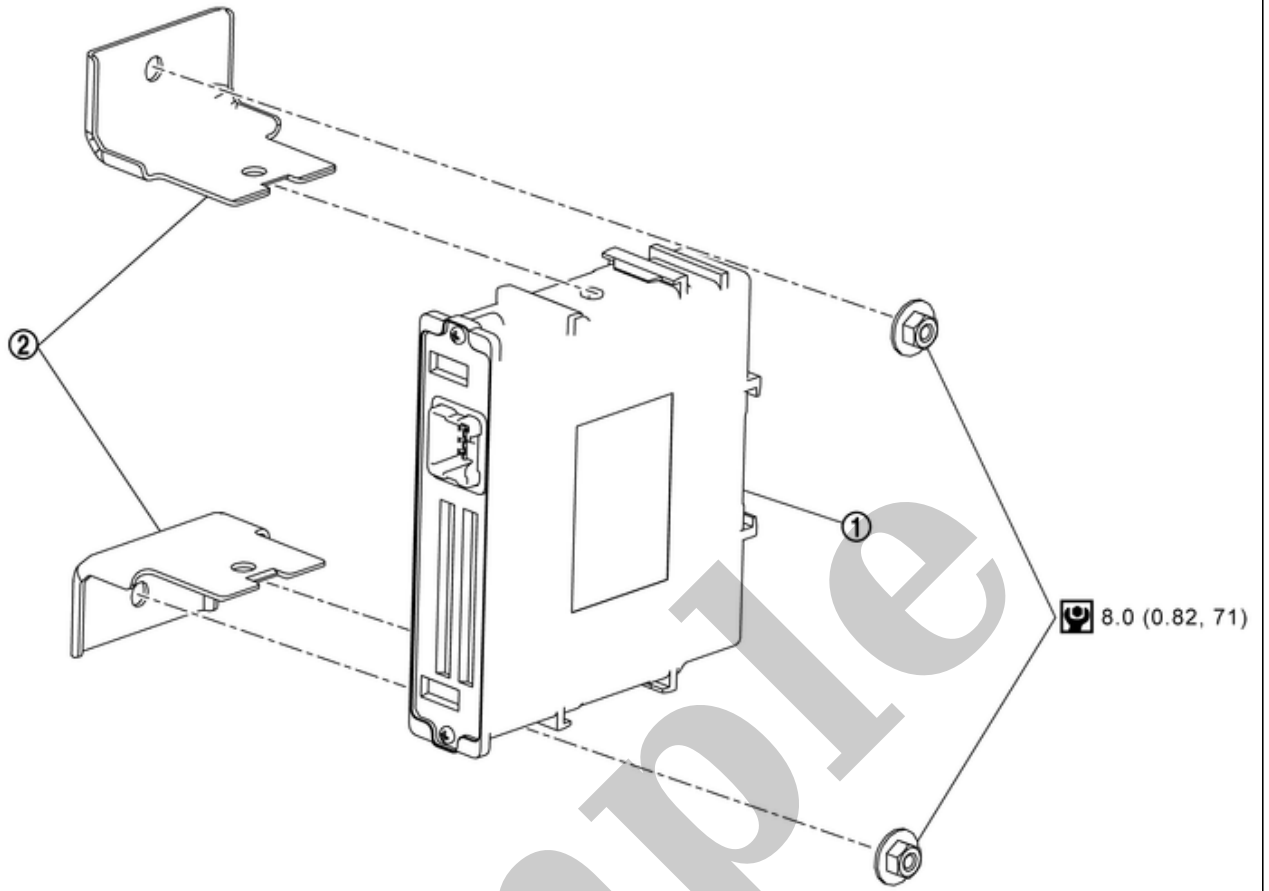
6 Check front disc brake for dragging again. When any drag is found, disassemble the cylinder body and replace if necessary. Refer to [Disassembly and Assembly](#).

7 If brake pads are replaced or ground, or if braking force is felt strange, perform break-in work. Refer to [Periodic Maintenance Operation](#).

BRAKE POWER SUPPLY BACKUP UNIT : Exploded View

RDE-001824869

SEC. 253



RDE-001824869-01-000347644

①	Brake power supply backup unit	②	Bracket		
⊙	: N·m (kg-m, in-lb)				

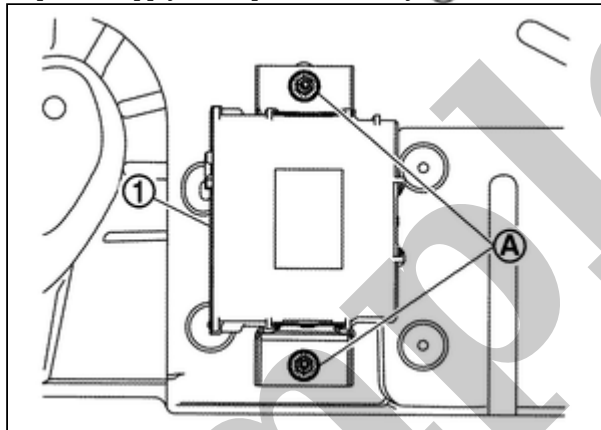
REMOVAL

- 1 Power switch OFF and disconnect CONSULT from DDL2 diagnosis connector.
- 2 Check that room lamps are turned OFF after closing all doors including back door, and then wait for 3 minutes or more at out side of vehicle.

CAUTION:

Never touch the vehicle during waiting.

- 3 Remove luggage side lower finisher (right). Refer to [Removal & Installation](#).
- 4 Disconnect brake power supply backup unit harness connector.
- 5 Remove nut (A) and then remove brake power supply backup unit assembly (1).



RPR-001824874-02-000347645

CAUTION:

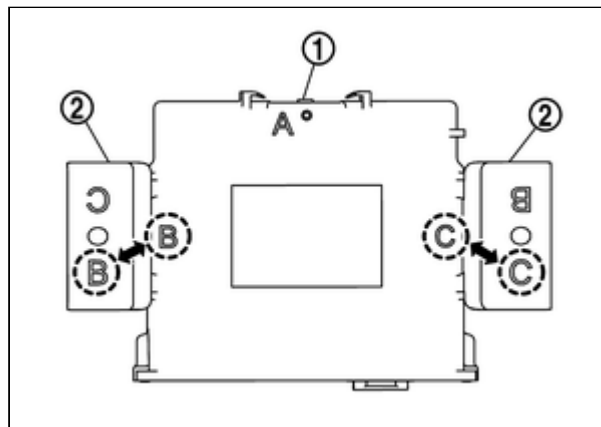
Never drop parts after removal.

- 6 Remove bracket from brake power supply backup unit.

INSTALLATION

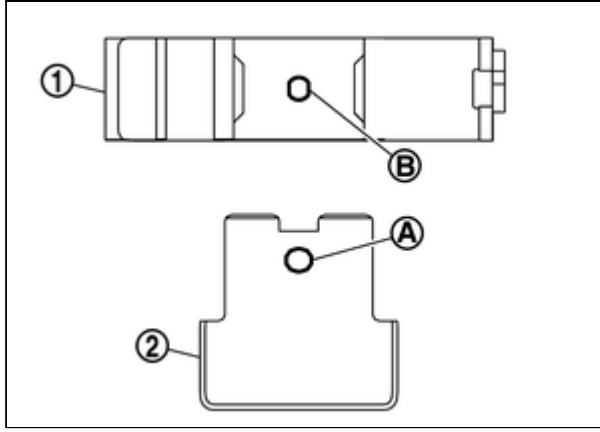
Note the following, and install in the reverse order of removal.

- Align the direction of alphabet letters on the brake power supply backup unit (1) with the direction of the same alphabet letters on the bracket (2).



RPR-001824874-03-000347646

- When installing bracket (2) to brake power supply backup unit (1), make sure to insert protrusion (B) of brake power supply backup to lock hole (A) of bracket unit protrudes from the opposite side of the lock hole.



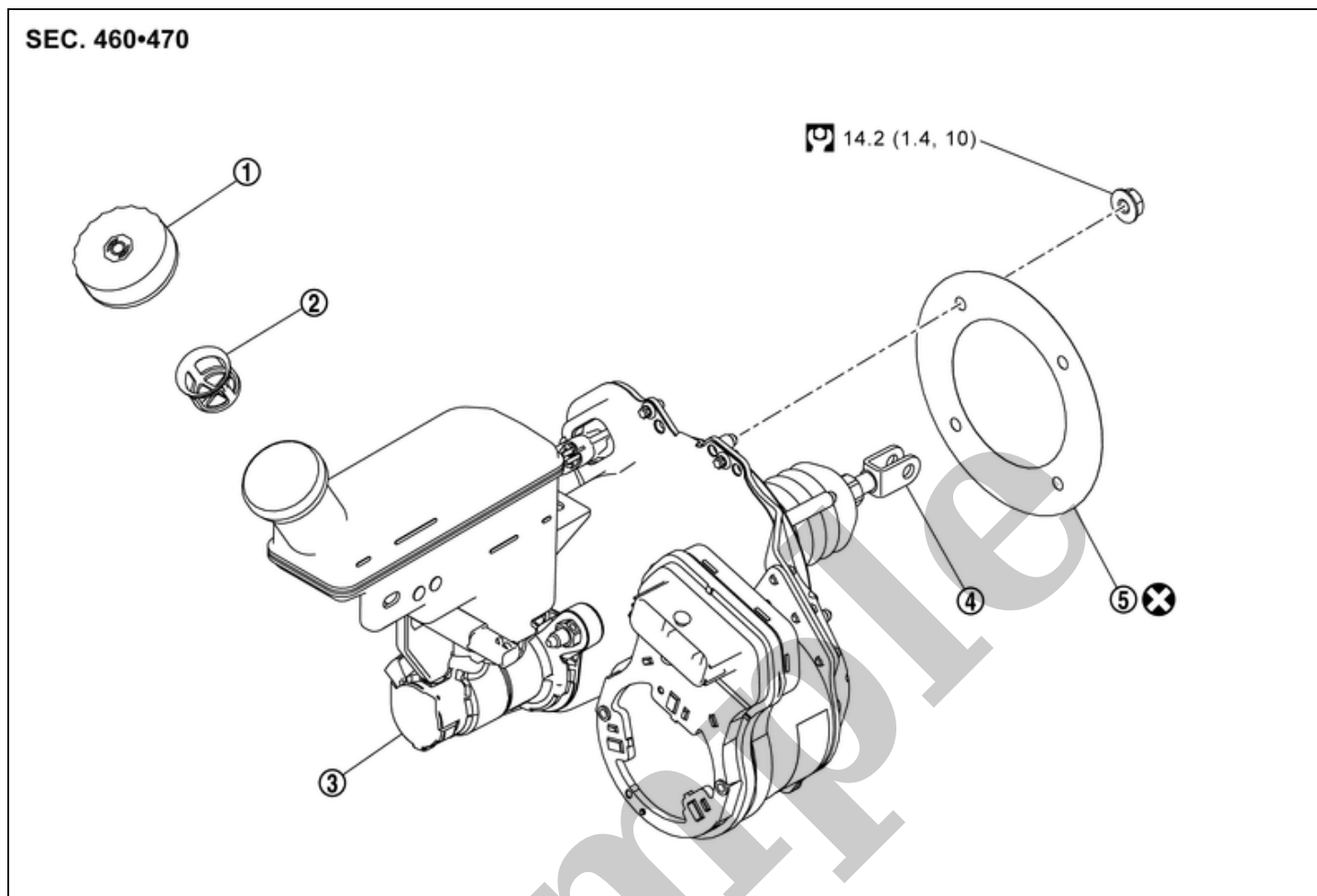
RPR-001824874-01-000347647

Sample

ELECTRICALLY-DRIVEN INTELLIGENT BRAKE UNIT : Exploded View

RDE-001824865

SEC. 460•470



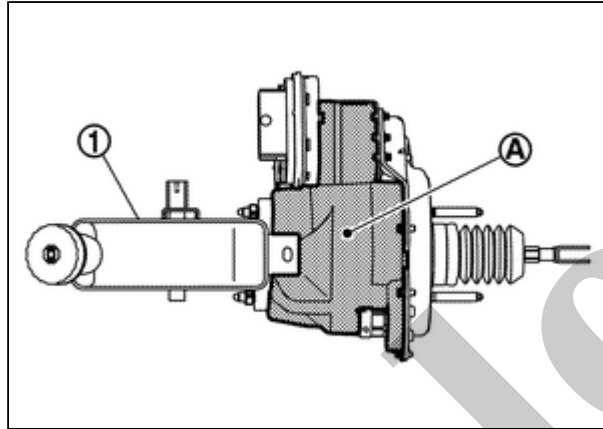
RDE-001824865-02-000373958

①	Reservoir cap	②	Oil strainer	③	Electrically-driven intelligent brake unit
④	Clevis	⑤	Gasket		
	: N·m (kg-m, ft-lb)				
	: Always replace after every disassembly.				

REMOVAL

CAUTION:

- While electrically-driven intelligent brake unit ① is removed, hold part ② with hand.



RPR-001824852-05-000354375

- Never disassemble electrically-driven intelligent brake unit.
- Never spill or splash brake fluid on painted surfaces. Brake fluid may seriously damage paint. Wipe it off immediately and wash with water if it gets on a painted surface. For brake component parts, never wash them with water.
- Never depress brake pedal during removal and installation of brake hose because brake fluid may scatter.

1 Perform inspection before removal. Refer to [Inspection and Adjustment](#).

2 Power switch OFF and disconnect CONSULT from DDL2 diagnosis connector.

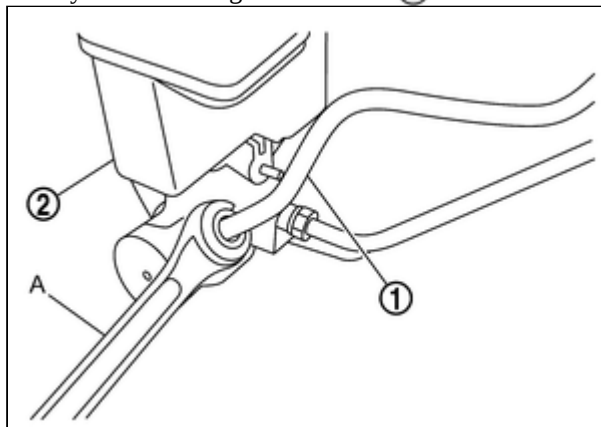
3 Check that room lamps are turned OFF after closing all doors including back door, and then wait for 3 minutes or more at out side of vehicle.

4 Disconnect negative terminal of 12 V battery. Refer to [Removal and Installation](#).

5 Drain brake fluid. Refer to [Draining](#).

6 Remove cowl top member. Refer to [Removal & Installation](#).

7 Separate the brake tube ① from electrically-driven intelligent brake unit ② with a flare nut wrench (A).



RPR-001824852-06-000279706

8 Remove brake fluid level switch as follows;
a Slide connector lock ③ to right (1) of vehicle.