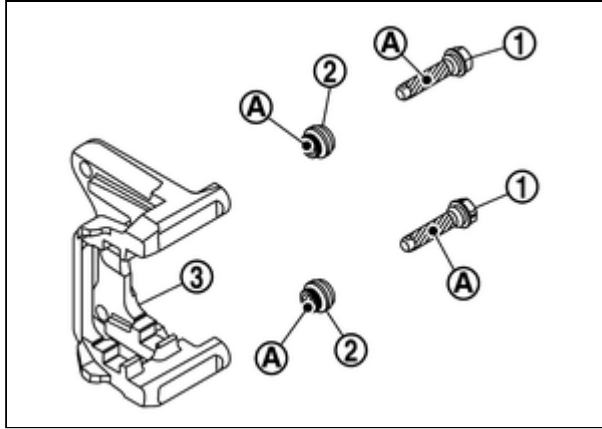


# Your Ultimate Source for OEM Repair Manuals

FactoryManuals.net is a great resource for anyone who wants to save money on repairs by doing their own work. The manuals provide detailed instructions and diagrams that make it easy to understand how to fix a vehicle.

## 1995 NISSAN Sunny Sedan OEM Service and Repair Workshop Manual

[Go to manual page](#)



RPR-001824866-03-000347641

4 Install cylinder body to torque member and tighten sliding pin bolts to the specified torque. Refer to [Exploded View](#)

5 Perform inspection after installation. Refer to [Inspection](#).

Sample

## INSPECTION AFTER DISASSEMBLY

---

Check the following items and replace if necessary.

### Cylinder Body

---

Check cylinder inner wall for rust, wear, cracks or damage.

**CAUTION:**

**Always clean with new brake fluid. Never clean with mineral oil such as gasoline and diesel fuel.**

### Torque Member

---

Check torque member for rust, wear, cracks or damage.

### Piston

---

Check piston for rust, wear, cracks or damage.

**CAUTION:**

**Piston sliding surface is plated. Never polish with sandpaper.**

### Sliding Pin, Sliding Pin Boot and Bushing

---

Check sliding pins, sliding pin boots and bushing for rust, wear, cracks or damage.

## INSPECTION AFTER INSTALLATION

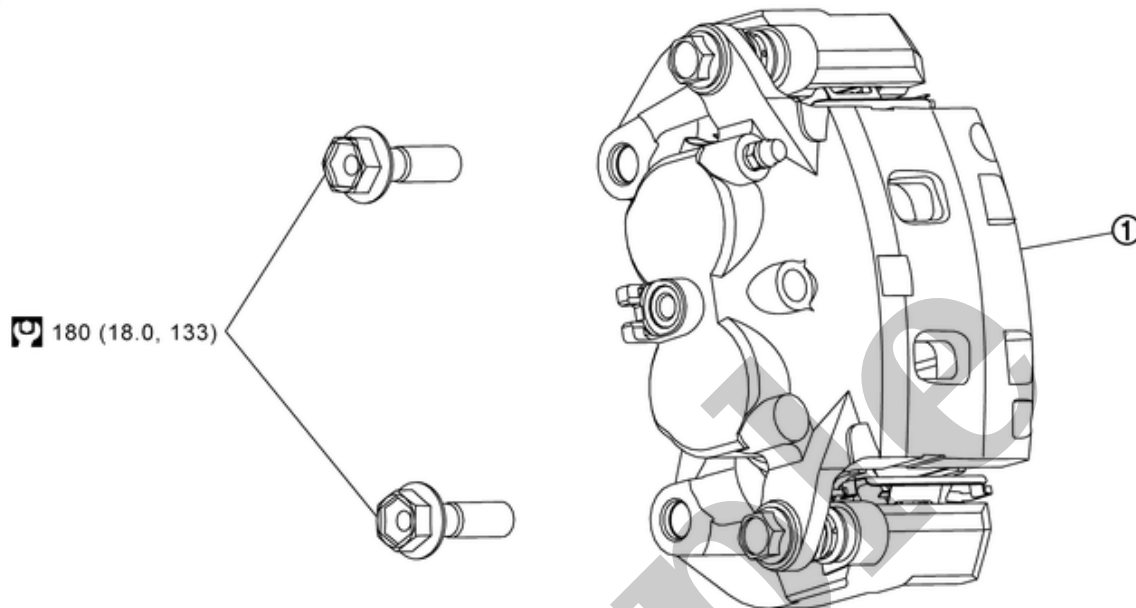
---

- When replacing rear brake caliper or when returning piston of rear brake caliper, perform the following procedure.
  - Adjust initial position. Refer to [Work Procedure](#).
  - Must be performed additional service when removing and replacing rear brake pad and rear brake caliper. Refer to [Description](#).
- Check drag of rear disc brake. If any drag is felt, follow the procedure described below.
  1. Performed additional service when removing and replacing rear brake pad and rear brake caliper. Refer to [Work Procedure](#).
  2. Depress the brake pedal several times.
  3. Check drag of rear disc brake again. When any drag is felt, replace cylinder body. Refer to [Removal and Installation](#).
- If brake pads are replaced or ground, or if braking force is felt strange, perform break-in work. Refer to [Periodic Maintenance Operation](#).

## FOR NAO 31 SIZE MODELS

### REMOVAL

SEC. 440

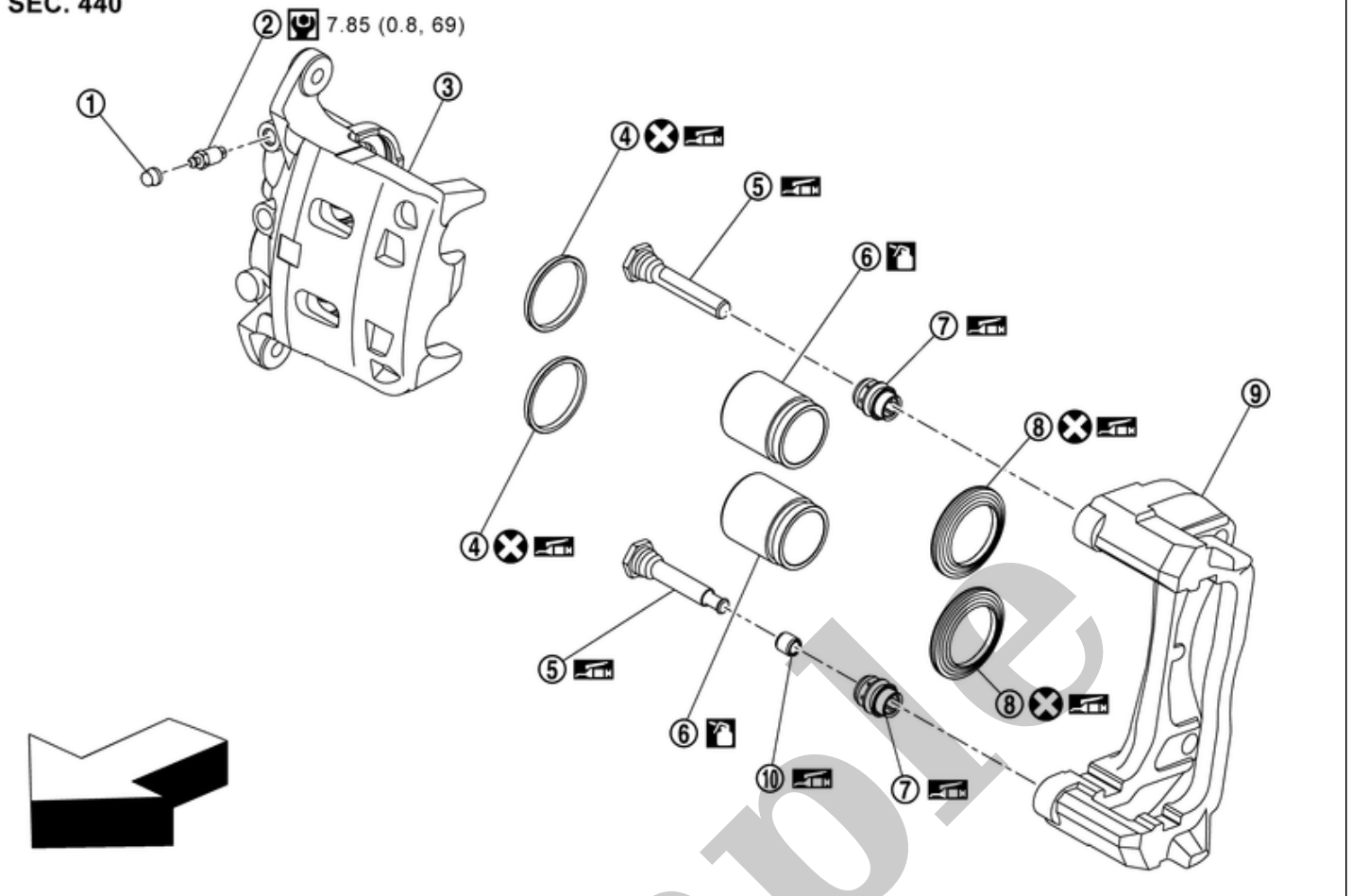


RDE-001824857-01-000347626

①	Brake caliper assembly				
	: N·m (kg-m, ft-lb)				

### DISASSEMBLY

SEC. 440



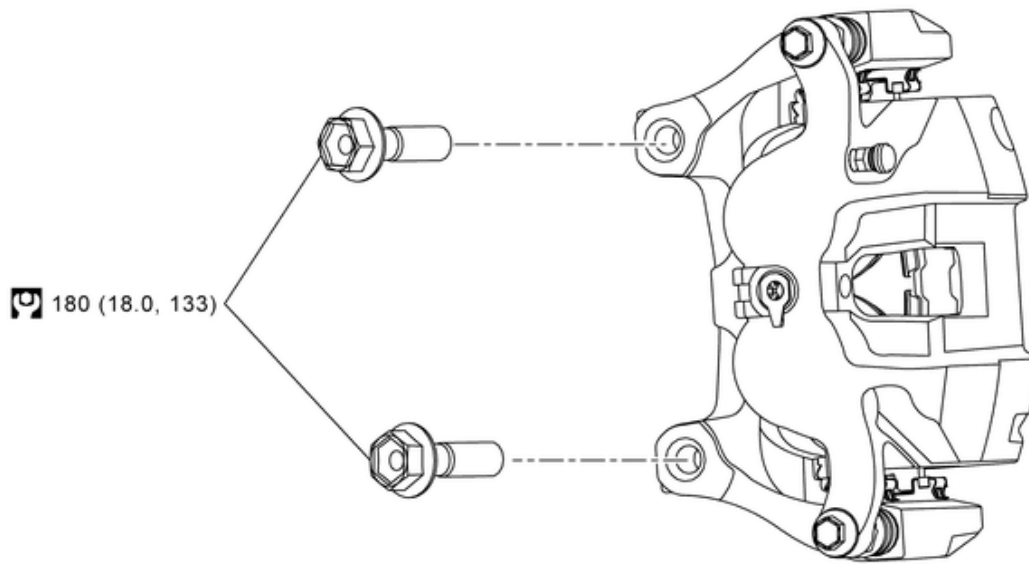
RDE-001824857-02-000347627

①	Cap	②	Bleeder valve	③	Cylinder body
④	Piston seal	⑤	Sliding pin	⑥	Piston
⑦	Sliding pin boot	⑧	Piston boot	⑨	Torque member
⑩	Bushing				
←	: Vehicle front				
⊙	: N·m (kg-m, in-lb)				
🔧	: NISSAN rubber grease.				
🚰	: NISSAN brake fluid No.2500				
⊗	: Always replace after every disassembly.				

## FOR NAO 36 SIZE MODELS

### REMOVAL

SEC. 440

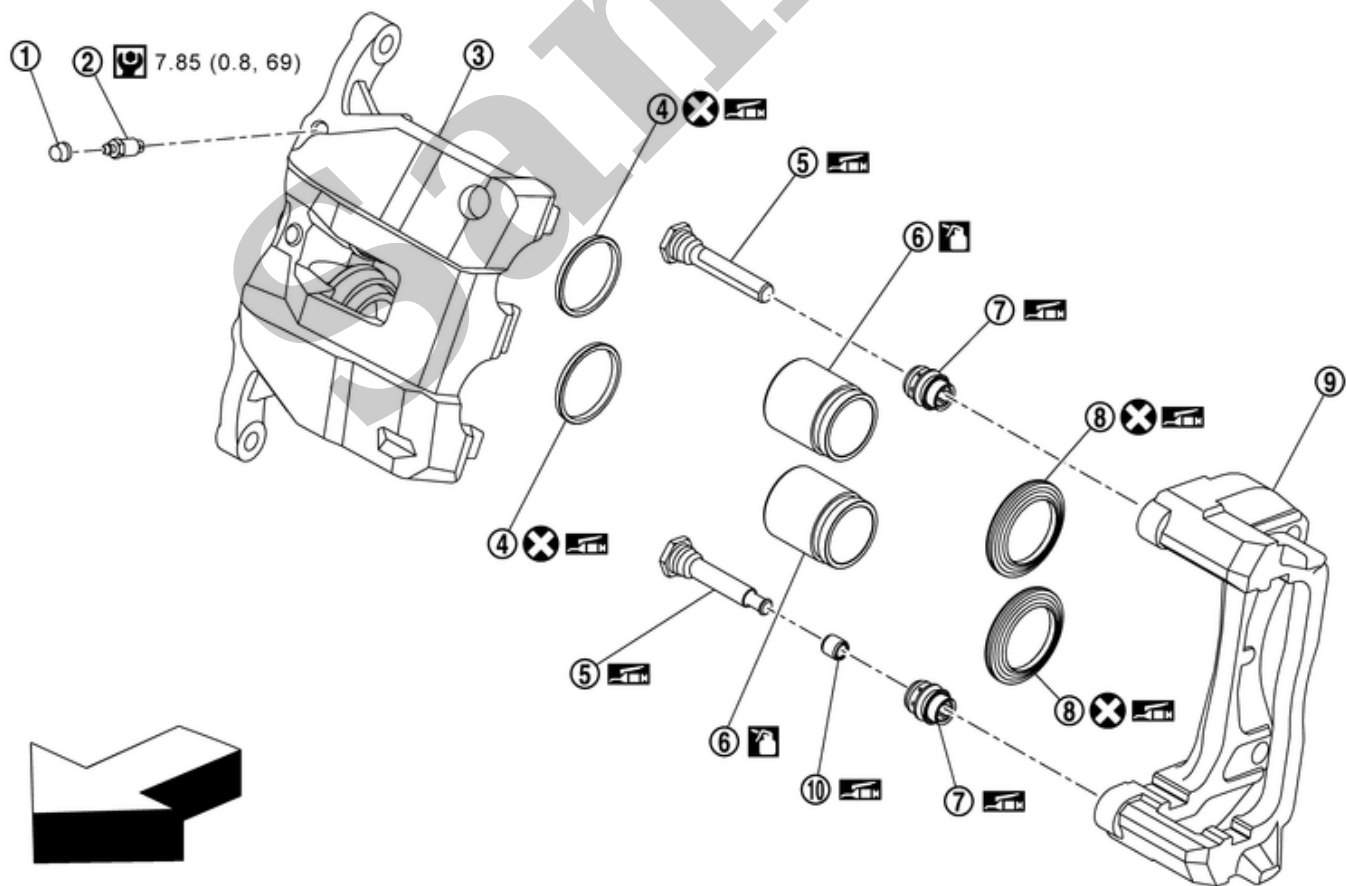


RDE-001824857-03-000420939

①	Brake caliper assembly				
	: N·m (kg-m, ft-lb)				






DISASSEMBLY

SEC. 440



RDE-001824857-04-000420940

①	Cap	②	Bleeder valve	③	Cylinder body
④	Piston seal	⑤	Sliding pin	⑥	Piston

⑦	Sliding pin boot	⑧	Piston boot	⑨	Torque member
⑩	Bushing				
	: Vehicle front				
	: N·m (kg-m, in-lb)				
	: NISSAN rubber grease.				
	: NISSAN brake fluid No.2500				
	: Always replace after every disassembly.				

Sample

## REMOVAL

### WARNING:

Remove dust covering brake caliper assembly and brake pad with a dust collector. Never splatter the dust with an air blow gun.

### CAUTION:

- Never spill or splash brake fluid on painted surfaces. Brake fluid may seriously damage paint. Wipe it off immediately and wash with water if it gets on a painted surface. For brake component parts, never wash them with water.
- Never depress brake pedal during removal and installation of brake hose because brake fluid may scatter.
- Never depress the brake pedal while removing the brake pads because the piston may pop out.
- Never drop parts after removal.
- If the brake fluid or grease adheres to cylinder body and disc rotor, quickly wipe it off.

1 Remove tires. Refer to [Removal and Installation](#).

2 Fix the disc rotor using wheel nuts.

3 Drain brake fluid. Refer to [Draining](#).

### CAUTION:

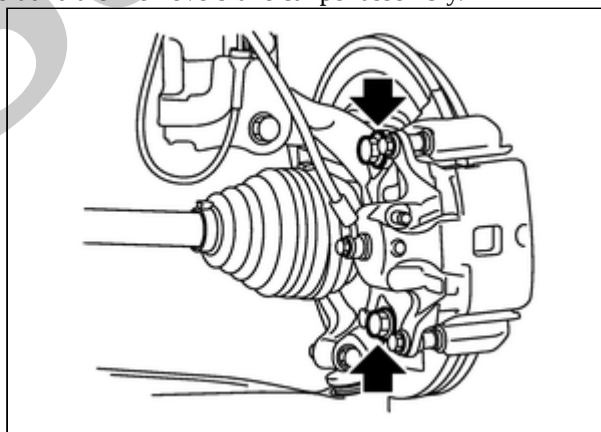
Never adhere brake fluid to disc rotor.

4 Remove union bolts and copper washer and then separate brake hose from brake caliper assembly. Refer to [Removal & Installation](#)

### CAUTION:

Never depress brake pedal during removal and installation of brake hose because brake fluid may scatter.

5 Remove torque member mounting bolt and then remove brake caliper assembly.



RPR-001824846-01-PFIA0835ZZ

### CAUTION:

Never drop brake caliper assembly and brake pad.

## INSTALLATION

### WARNING:



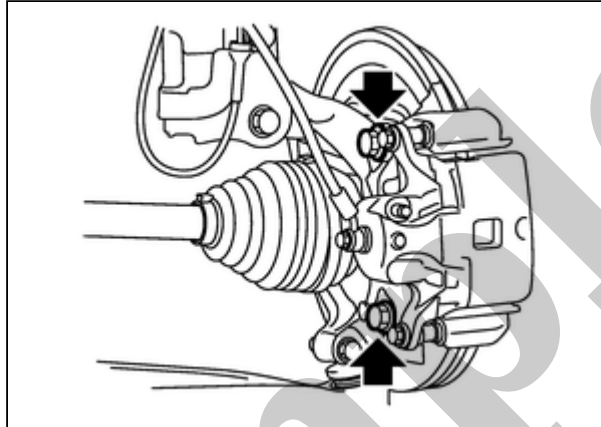
Remove dust covering brake caliper assembly and brake pad with a dust collector. Never splatter the dust with an air blow gun.

**CAUTION:**

- Never spill or splash brake fluid on painted surfaces. Brake fluid may seriously damage paint. Wipe it off immediately and wash with water if it gets on a painted surface. However avoid washing brake components with water.
- Never depress brake pedal while removing the brake pads because the piston may pop out.
- If brake fluid or grease adheres to disc rotor and cylinder body, quickly wipe it off.

1 Install disc rotor. Refer to [Removal & Installation](#).

2 Install brake caliper assembly to steering knuckle and tighten torque member mounting bolt to the specified torque.



RPR-001824846-02-PFIA0835ZZ

**CAUTION:**

Never spill or splash any grease and moisture on the brake caliper assembly mounting face, threads, mounting bolts and washers. Wipe out any grease and moisture.

3 Install copper washers and brake hose to brake caliper and tighten union bolt to the specified torque. Refer to [Removal & Installation](#).

**CAUTION:**

Never reuse copper washer.

4 Perform air bleeding. Refer to [Air Bleeding](#).

**CAUTION:**

- Never refill drained brake fluid.
- Never adhere brake fluid to disc rotor.

5 Check front disc brake for dragging. Refer to [Inspection](#).

6 Install tires. Refer to [Removal and Installation](#).

7 Perform inspection after installation. Refer to [Inspection](#).

## DISASSEMBLY

**CAUTION:**

Never drop parts.

**NOTE:**

When disassembling, torque member, brake pad, and pad retainer are not required to remove. Refer to [Removal & Installation](#).

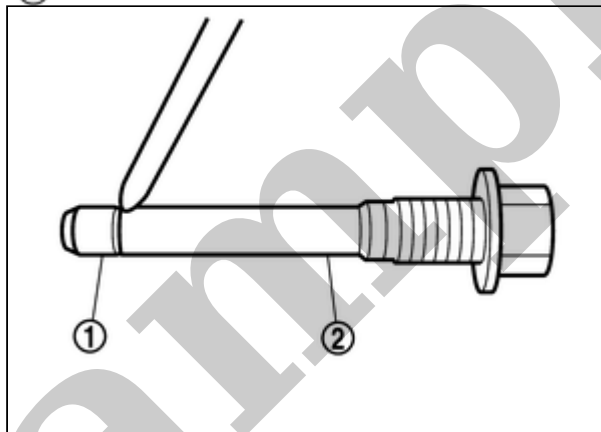
1 Remove sliding pin bolts and then remove cylinder body from torque member.

**CAUTION:**

Never drop brake pad by fixing it with suitable tape.

2 Remove sliding pin boots from torque member.

3 Remove bushing ① from sliding pin ②.



RPR-001824875-01-SFIA0496ZZ

4 Place a wooden block as shown in the figure, and blow air into union bolt mounting hole to remove pistons and piston boots.



RPR-001824875-02-RB0032D

**CAUTION:**

Never get fingers caught in the pistons.

5 Remove piston seals from cylinder body using seal pick tool.