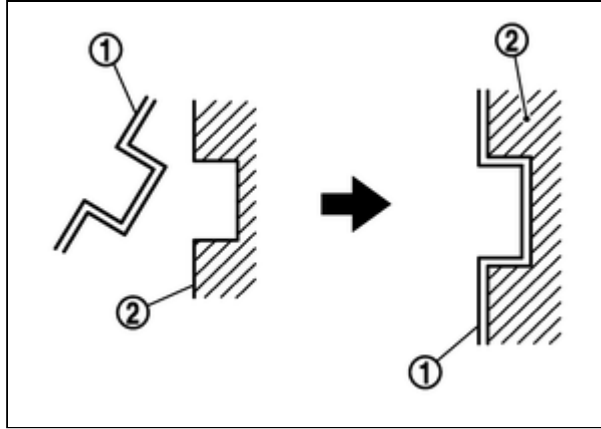


Your Ultimate Source for OEM Repair Manuals

FactoryManuals.net is a great resource for anyone who wants to save money on repairs by doing their own work. The manuals provide detailed instructions and diagrams that make it easy to understand how to fix a vehicle.

1995 NISSAN Skyline GT-R (R33) OEM Service and Repair Workshop Manual

[Go to manual page](#)



RPR-001824873-07-FIA0763J

CAUTION:

- Securely assemble pad retainers not to be lifted up from torque member.
- Never deform pad retainers.

2 Install inner shim and inner shim cover to inner pad.

CAUTION:

When replacing brake pad, must always be together with shim.

3 Install outer cover to outer pad.

CAUTION:

When replacing brake pad, must always be together with shim.

4 Install brake pad to torque member.

CAUTION:

Never deform pad retainer.

5 Install cylinder body to torque member.

CAUTION:

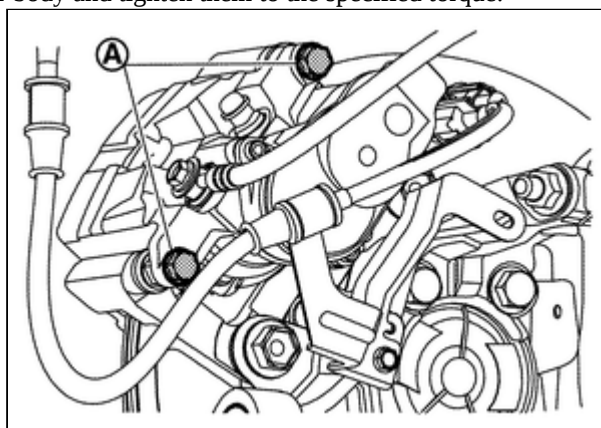
- Never damage piston boot.
- When installing cylinder body with new one, check brake fluid level in reservoir tank because brake fluid returns to reservoir tank by pressing piston in.



NOTE:

When returning piston, use disc brake piston tool (commercial tool) to press piston easily.

6 Install sliding pin bolt (A) to cylinder body and tighten them to the specified torque.



7 Must be performed additional service when removing and replacing brake pad and rear brake caliper. Refer to [Description](#).

8 Depress the brake pedal several times to check that no drag feel is present for the rear disc brake. Refer to [Inspection](#).

9 Install tires. Refer to [Removal and Installation](#).

10 Perform inspection after installation. Refer to [Inspection](#).

Sample

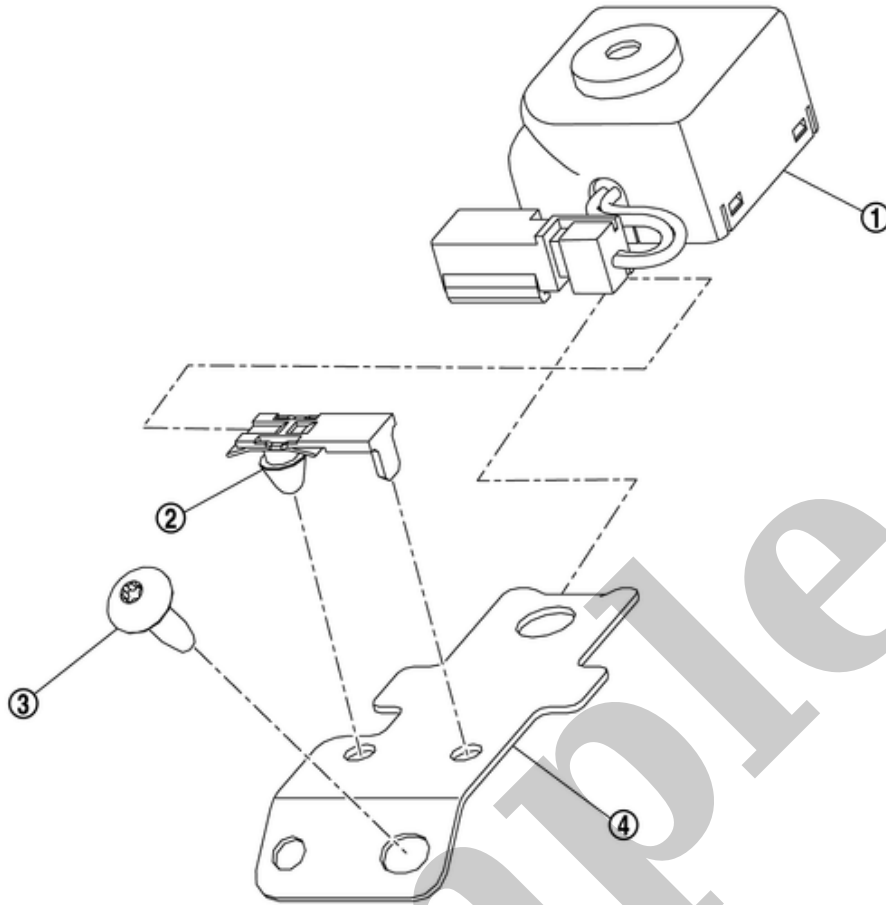
INSPECTION AFTER REMOVAL

- Replace the shims and shim covers if rust is excessively attached.
- Eliminate rust on the pad and the torque member. Replace them if rust is excessively attached.

INSPECTION AFTER INSTALLATION

- When replacing rear brake pad or when returning piston of rear brake caliper, perform the following procedure.
 - Adjust initial position. Refer to [Work Procedure](#).
 - Must be performed additional service when removing and replacing rear brake pad and rear brake caliper. Refer to [Description](#).
- Check a drag of rear disc brake, if any drag is felt, follow the procedure described below.
 1. Must be performed additional service when removing and replacing rear brake pad and rear Refer to [Description](#).
 2. Depress the brake pedal several times.
 3. Check a drag of rear disc brake again. If any drag is felt, disassemble the cylinder body and replace if necessary. Refer to [Removal and Installation](#).
- If brake pads are replaced or ground, or if braking force is felt strange, perform break-in work. Refer to [Periodic Maintenance Operation](#).

SEC. 253

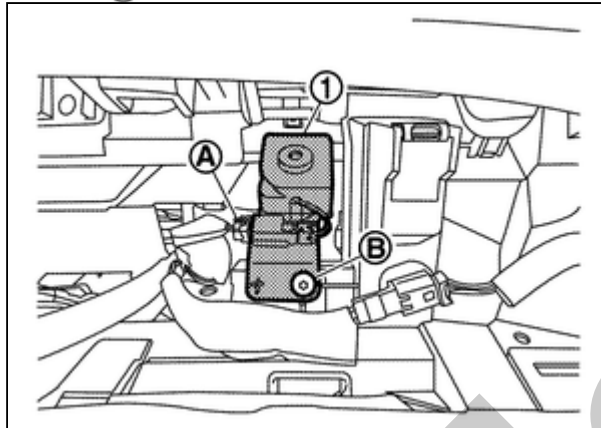


RDE-001930468-01-000347642

①	Warning buzzer	②	Clip	③	Screw
④	Bracket				

REMOVAL

- 1 Remove integrated interface display. Refer. [Removal & Installation](#).
- 2 Disconnect warning buzzer harness connector **(A)**.



RPR-001824853-02-000347643

- 3 Remove mounting screw **(B)** and the remove warning buzzer **(1)**.

INSTALLATION

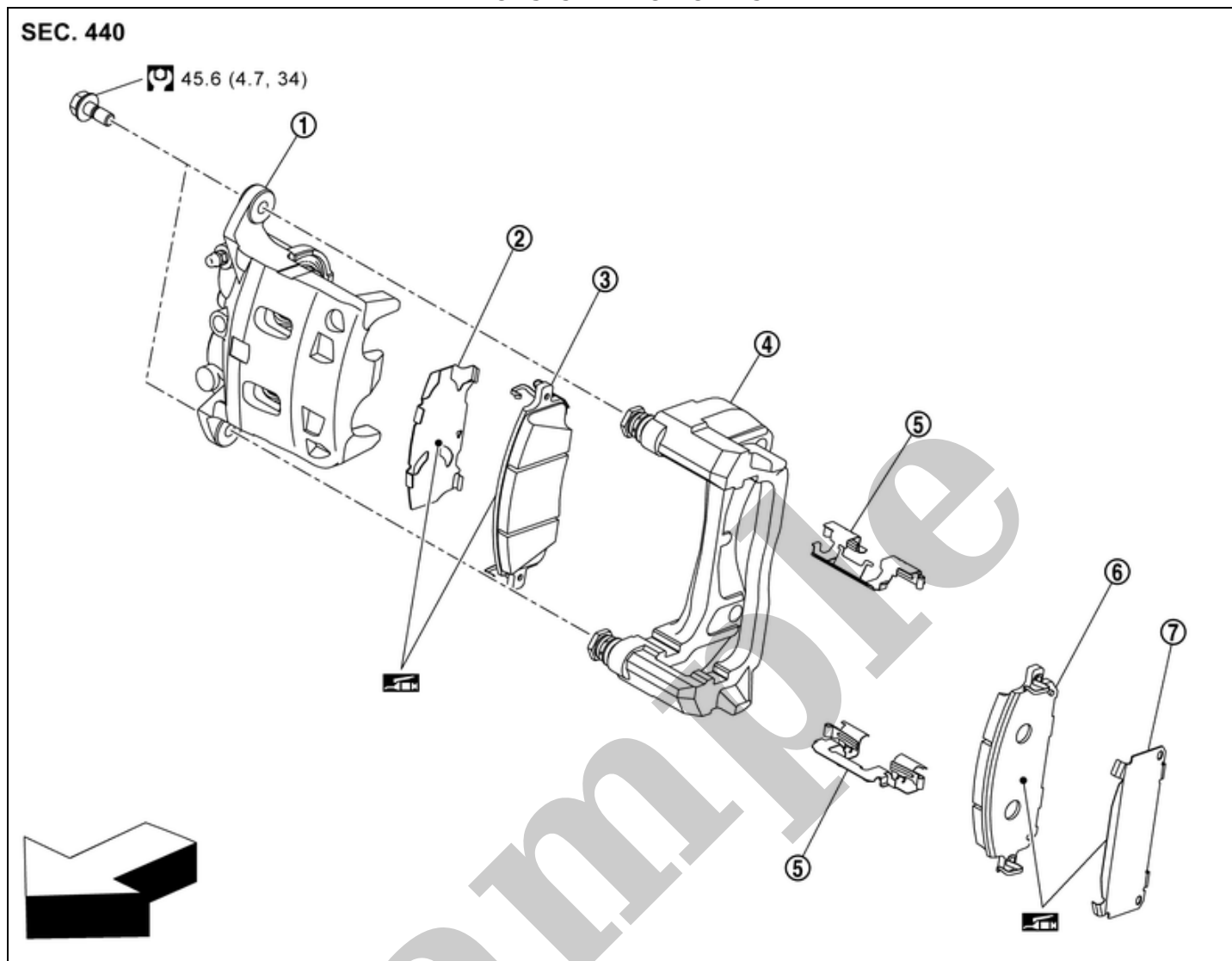
Note the following, and install in the reverse order of removal.

FRONT BRAKE PAD : Exploded View

RDE-001824861

FOR 31 SIZE NAO MODELS

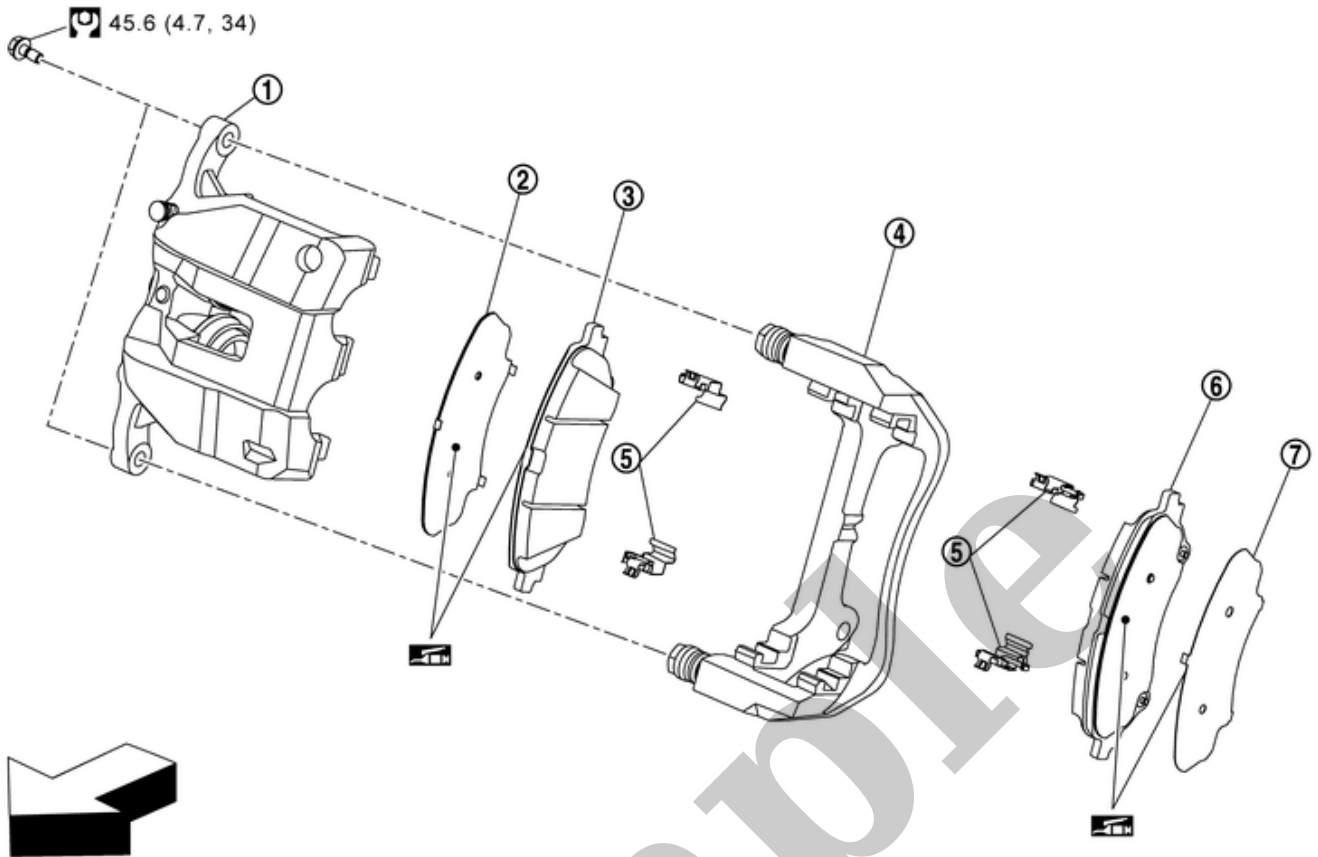
SEC. 440



RDE-001824861-01-000347625

①	Cylinder body	②	Inner shim	③	Inner pad (with pad wear sensor)
④	Torque member	⑤	Pad retainer	⑥	Outer pad (with pad wear sensor)
⑦	Outer shim				
←	: Vehicle front				
⊞	: N·m (kg-m, ft-lb)				
Ⓜ	: Nissan disc brake shim grease				

FOR 36 SIZE NAO MODELS



RDE-001824861-02-000420937

①	Cylinder body	②	Inner shim	③	Inner pad (with pad wear sensor)
④	Torque member	⑤	Pad retainer (VHB foil)	⑥	Outer pad
⑦	Outer shim				
	: Vehicle front				
	: N·m (kg-m, ft-lb)				
	: Nissan disc brake shim grease				

FOR NAO 31 SIZE MODELS

REMOVAL

WARNING:

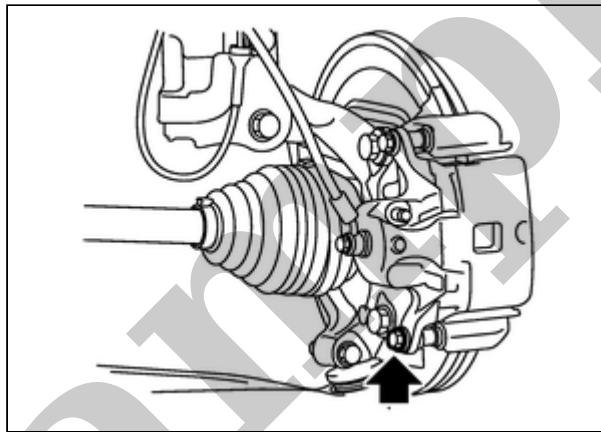
Remove dust covering brake caliper assembly and brake pad with a dust collector. Never splatter the dust with an air blow gun.

CAUTION:

- Never depress the brake pedal while removing the brake pads because the piston may pop out.
- If the brake fluid or grease adheres to the brake caliper assembly and disc rotor, quickly wipe it off.

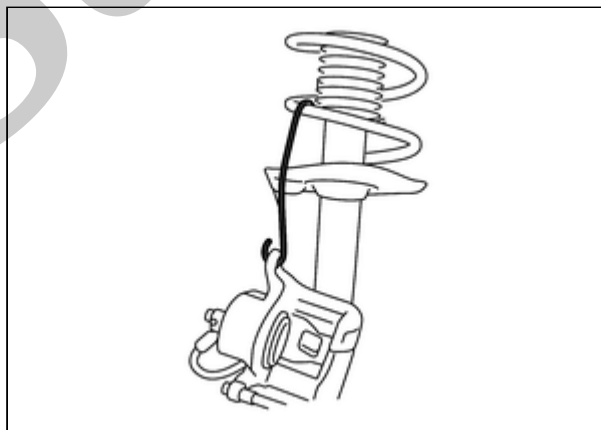
1 Remove tires. Refer to [Removal and Installation](#).

2 Remove sliding pin bolt (lower side).



RPR-001824863-01-PFIA0832ZZ

3 Hang cylinder body with suitable wire not to stretch brake hose.

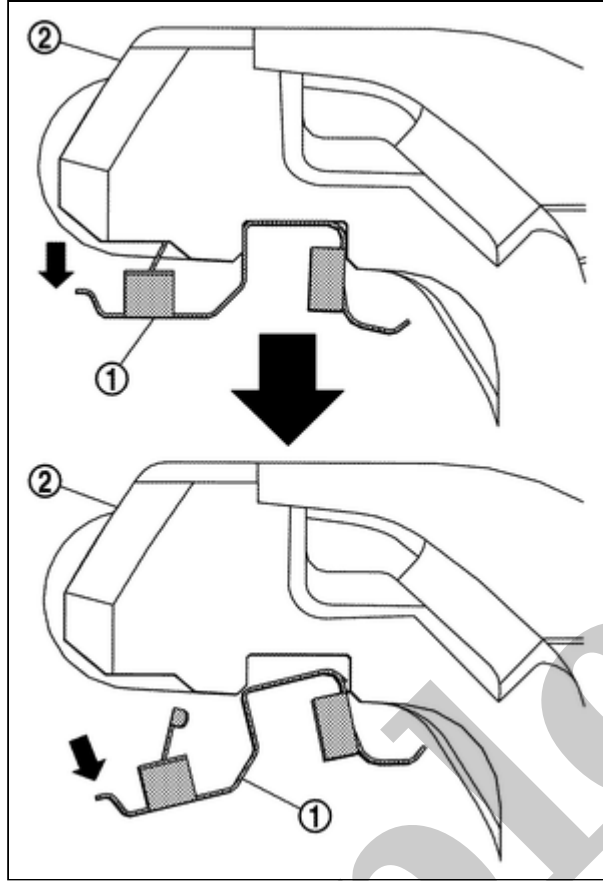


RPR-001824863-02-000354054

4 Remove brake pads, shims, and pad retainer from torque member.

CAUTION:

- When removing pad retainer ① from torque member ②, never deform pad retainer.



RPR-001824863-03-000347634

- Never damage piston boots.
- Never drop brake pads, and shims.
- Distinguish each position of removed brake pads.

5 Perform inspection after removal. Refer to [Inspection and Adjustment](#).

INSTALLATION

WARNING:

Remove dust covering brake caliper assembly and brake pad with a dust collector. Never splatter the dust with an air blow gun.

CAUTION:

- Never depress brake pedal while removing brake pads because the piston may pop out.
- If the brake fluid or grease adheres to disc rotor and cylinder body, quickly wipe it off.

1 Install pad retainers (1) to torque members (2) if pad retainers are removed before.

