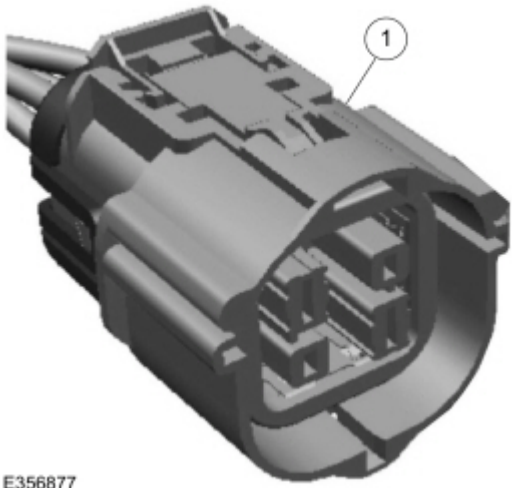


# Your Ultimate Source for OEM Repair Manuals

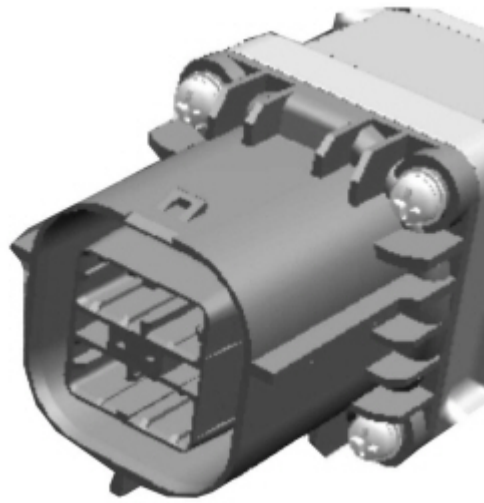
FactoryManuals.net is a great resource for anyone who wants to save money on repairs by doing their own work. The manuals provide detailed instructions and diagrams that make it easy to understand how to fix a vehicle.

## 1995 FORD Maverick LWB OEM Service and Repair Workshop Manual

[Go to manual page](#)



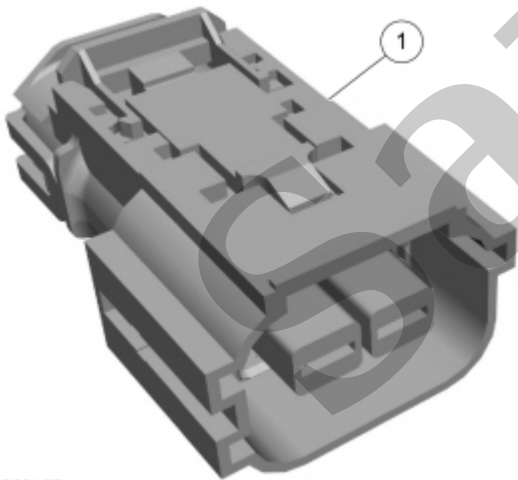
E356877



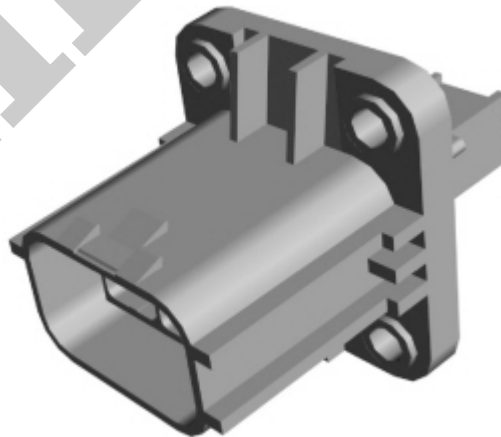
[Click here to learn about symbols, color coding, and icons used in this manual.](#)

**17. P702 - High Voltage Battery Cable to Air Conditioning (A/C) Compressor (2-way)**

| Callout | Connector                    |
|---------|------------------------------|
| 1       | Stage 1 electrical connector |



E389155

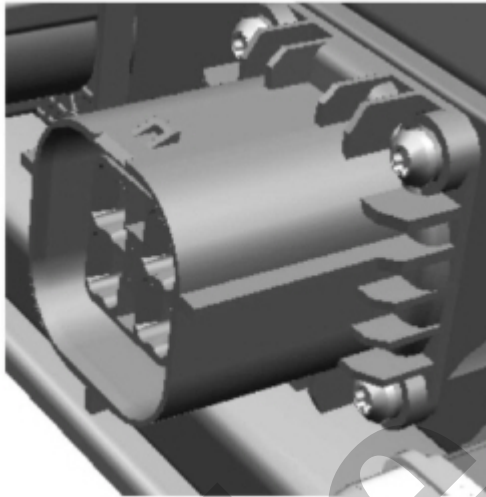
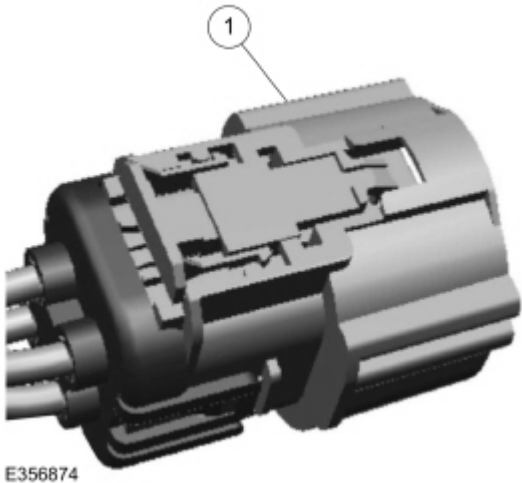


[Click here to learn about symbols, color coding, and icons used in this manual.](#)

**18. P702 - High Voltage Battery Cable to Cabin Coolant Heater (4-way)**

| Callout | Connector                    |
|---------|------------------------------|
| 1       | Stage 1 electrical connector |

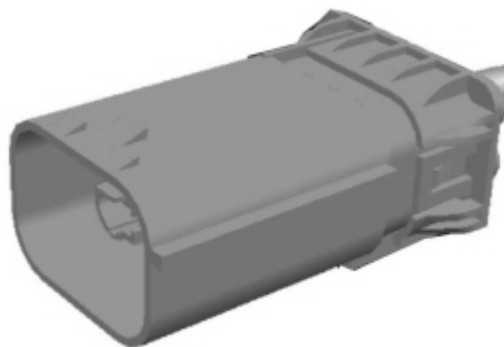
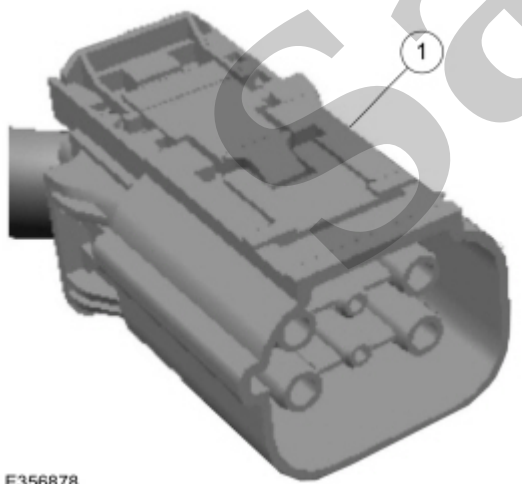
|   |                              |
|---|------------------------------|
| 1 | Stage 1 electrical connector |
|---|------------------------------|



[Click here to learn about symbols, color coding, and icons used in this manual.](#)

**21. P702 - Charge Port Wire Harness to High Voltage Battery Cable - Vehicles Equipped with Generic Function Module 2 (GFM2) (6-way)**

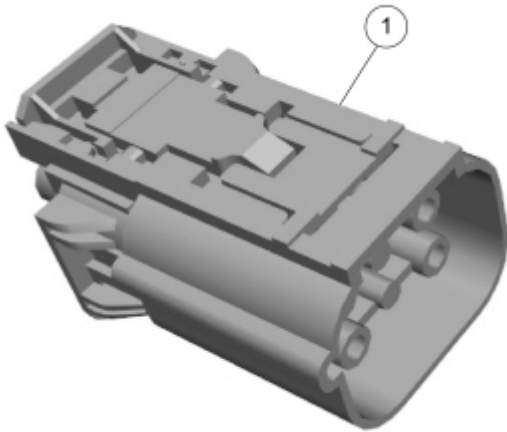
| Callout | Connector                    |
|---------|------------------------------|
| 1       | Stage 2 electrical connector |



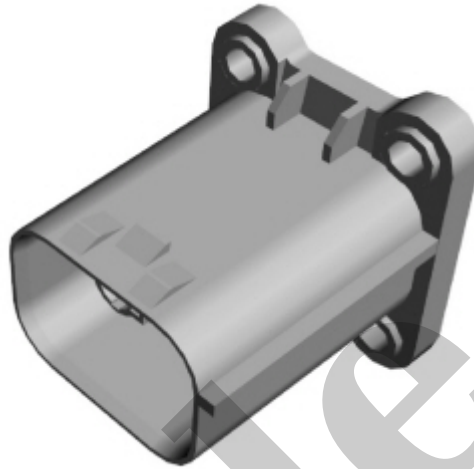
[Click here to learn about symbols, color coding, and icons used in this manual.](#)

**22. P702 - High Voltage Battery Cable to Secondary On-Board Diagnostic Control Module A (SOBDM) (2-way)**

| Callout | Connector                    |
|---------|------------------------------|
| 1       | Stage 1 electrical connector |



E389099



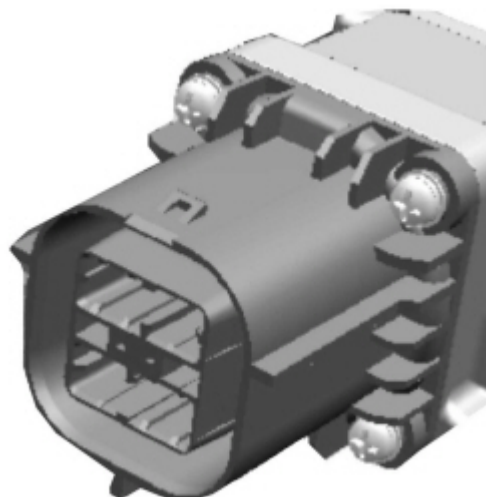
[Click here to learn about symbols, color coding, and icons used in this manual.](#)

**25. P702 - High Voltage Battery Cable to Direct Current/Direct Current (DC/DC) Converter Control Module (4-way)**

| Callout | Connector                    |
|---------|------------------------------|
| 1       | Stage 1 electrical connector |



E356877

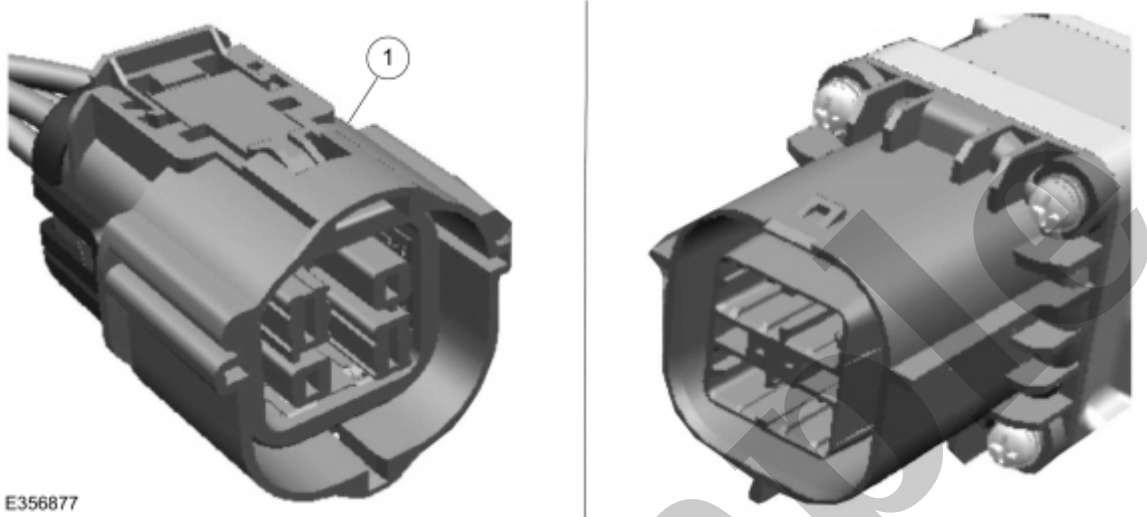


[Click here to learn about symbols, color coding, and icons used in this manual.](#)

**26. P758 - High Voltage Battery Cable to Air Conditioning (A/C) Compressor Jumper Harness (2-way)**

28. P758 - High Voltage Battery Cable to Direct Current/Direct Current (DC/DC) Converter Control Module (4-way)

| Callout | Connector                    |
|---------|------------------------------|
| 1       | Stage 1 electrical connector |



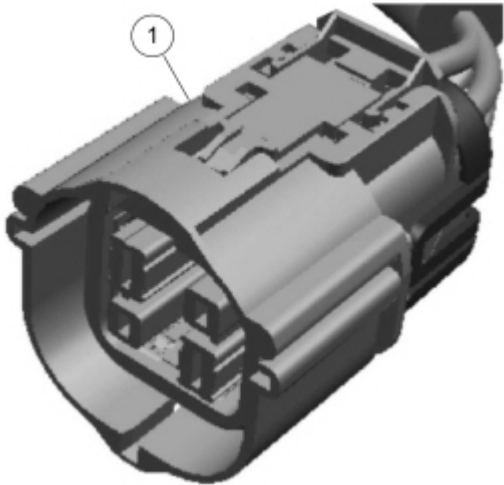
E356877

[Click here to learn about symbols, color coding, and icons used in this manual.](#)

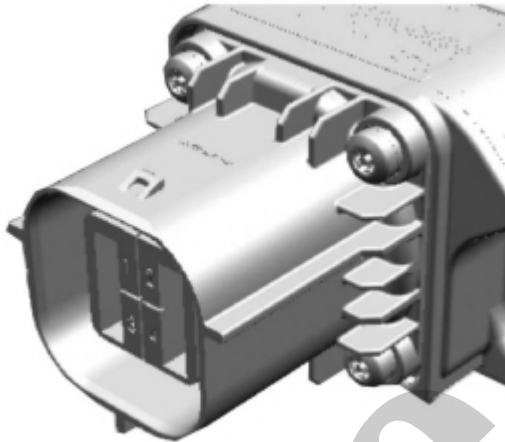
29. U611 PHEV - High Voltage Battery Cable to Air Conditioning (A/C) Compressor Jumper Harness (2-way)

| Callout | Connector                    |
|---------|------------------------------|
| 1       | Stage 1 electrical connector |

|   |                              |
|---|------------------------------|
| 1 | Stage 1 electrical connector |
|---|------------------------------|



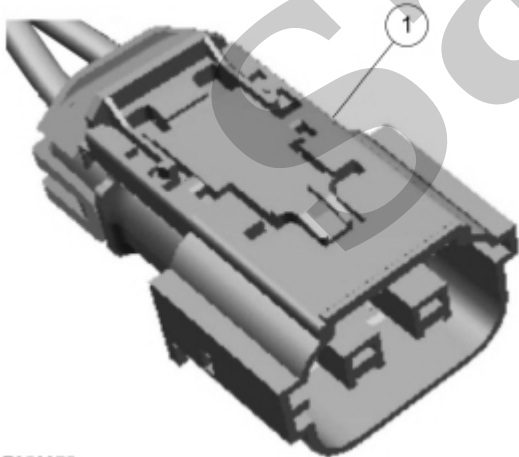
E356880



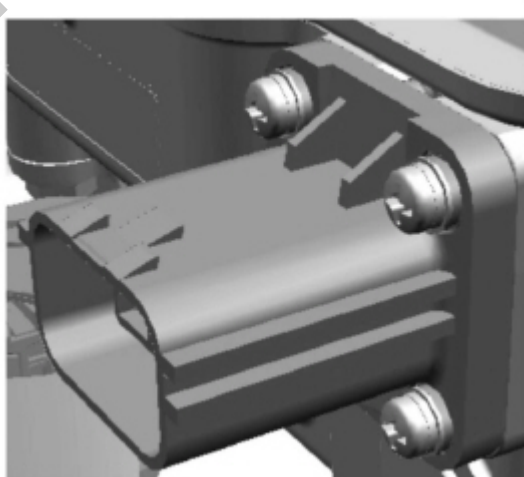
[Click here to learn about symbols, color coding, and icons used in this manual.](#)

**32. U611 PHEV - High Voltage Battery Cable to Secondary On-Board Diagnostic Control Module A (SOBDM) (2-way)**

| Callout | Connector                    |
|---------|------------------------------|
| 1       | Stage 1 electrical connector |



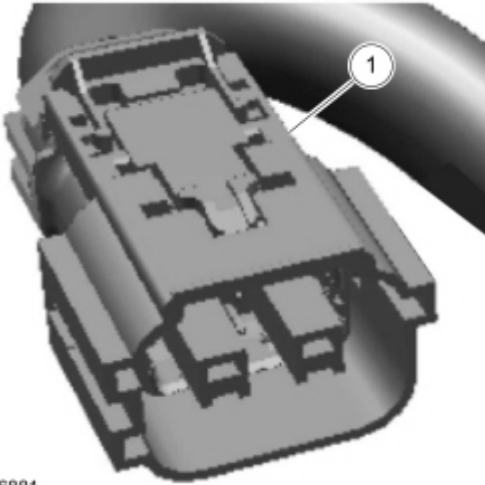
E356875



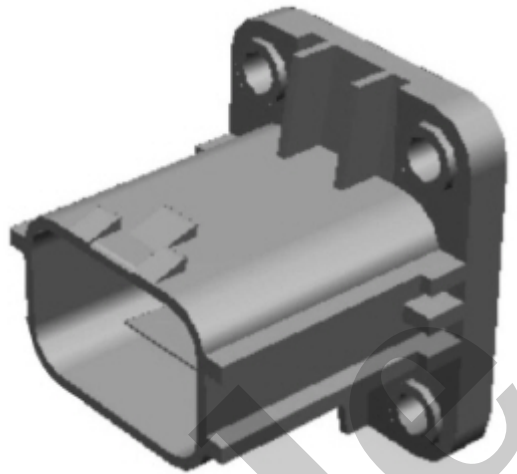
[Click here to learn about symbols, color coding, and icons used in this manual.](#)

**33. U611 PHEV - High Voltage Battery Cable to Secondary On-Board Diagnostic Control Module A (SOBDM) (6-way)**

| Callout | Connector                    |
|---------|------------------------------|
| 1       | Stage 1 electrical connector |



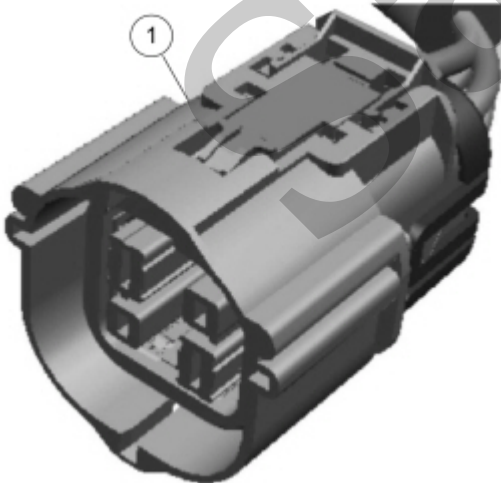
E356881



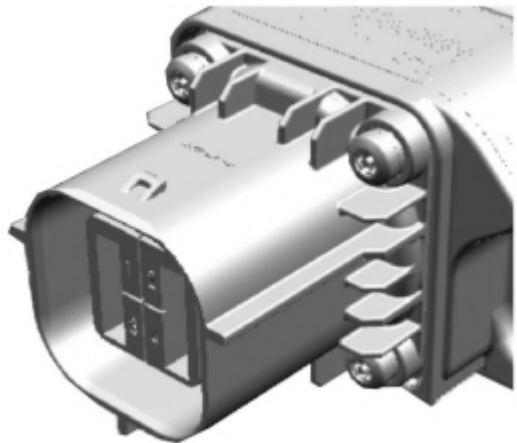
[Click here to learn about symbols, color coding, and icons used in this manual.](#)

**36. V363 - High Voltage Battery Cable to Cabin Coolant Heater (4-way)**

| Callout | Connector                    |
|---------|------------------------------|
| 1       | Stage 1 electrical connector |



E356880



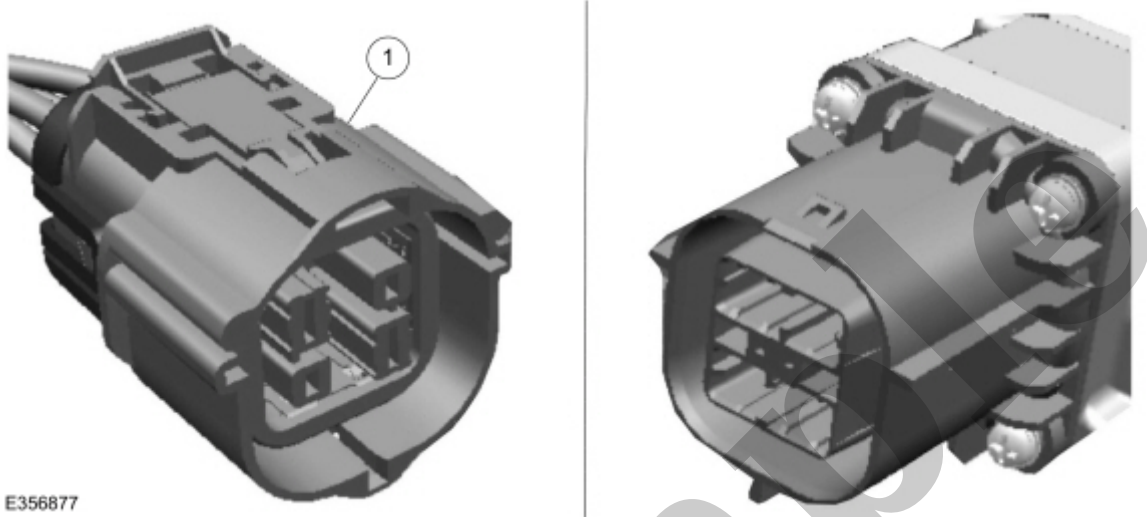
[Click here to learn about symbols, color coding, and icons used in this manual.](#)

**37. V363 - High Voltage Battery to High Voltage Battery Cable (4-way)**



39. V363 - High Voltage Battery Cable to Direct Current/Direct Current (DC/DC) Converter Control Module (4-way)

| Callout | Connector                    |
|---------|------------------------------|
| 1       | Stage 1 electrical connector |



E356877

[Click here to learn about symbols, color coding, and icons used in this manual.](#)

Copyright © Ford Motor Company

Samurai



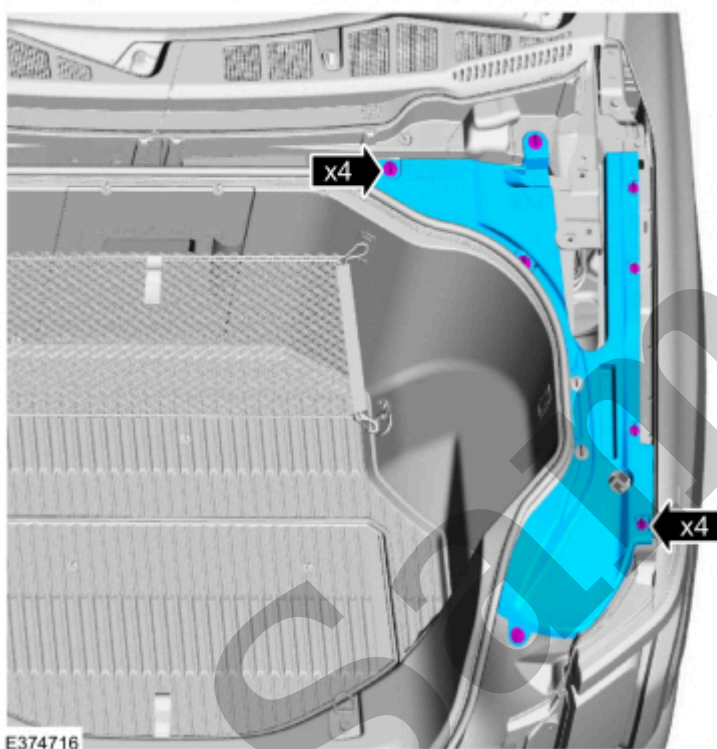
Refer to: [High Voltage System Health and Safety Precautions - Overview](#)(100-00 General Information, Description and Operation).

## 2. NOTE

The use of the "Manual Depower" procedure in this section must only be used when a Ford – specific diagnostic tool is not available or the diagnostic tool procedure fails.

Using the FDRS (Ford Diagnosis and Repair System) CARRY OUT the BECM (battery energy control module) -High Voltage System De-energizing and follow the on-screen instructions.

3. • Release the retainers and remove the LH (left-hand) underhood trim panel.



[Click here to learn about symbols, color coding, and icons used in this manual.](#)

4. • Release the Connector Position Assurance (CPA) clip.

## 6. NOTE

Make sure the electrical connector is secured with a cable tie when opened.

## NOTE

The "Do not operate" Sign can be downloaded and printed out here: Sign „Do not operate“ ([https://www.fordservicecontent.com/ford\\_content/pdf/workshop/DoNotSwitch.pdf](https://www.fordservicecontent.com/ford_content/pdf/workshop/DoNotSwitch.pdf))

Install and secure the cable tie and the sign.

Install the General Equipment: Cable Ties

Video version of this procedure:

([https://www.fordservicecontent.com/Ford\\_Content/videos/WorkShopManual/V100.mp4](https://www.fordservicecontent.com/Ford_Content/videos/WorkShopManual/V100.mp4))



[Click here to learn about symbols, color coding, and icons used in this manual.](#)

7. Using the FDRS (Ford Diagnosis and Repair System) COMPLETE the BECM (battery energy control module) -High Voltage System De-energizing and verify the High Voltage System has been de-energized.

## Manual Depower

## WARNING