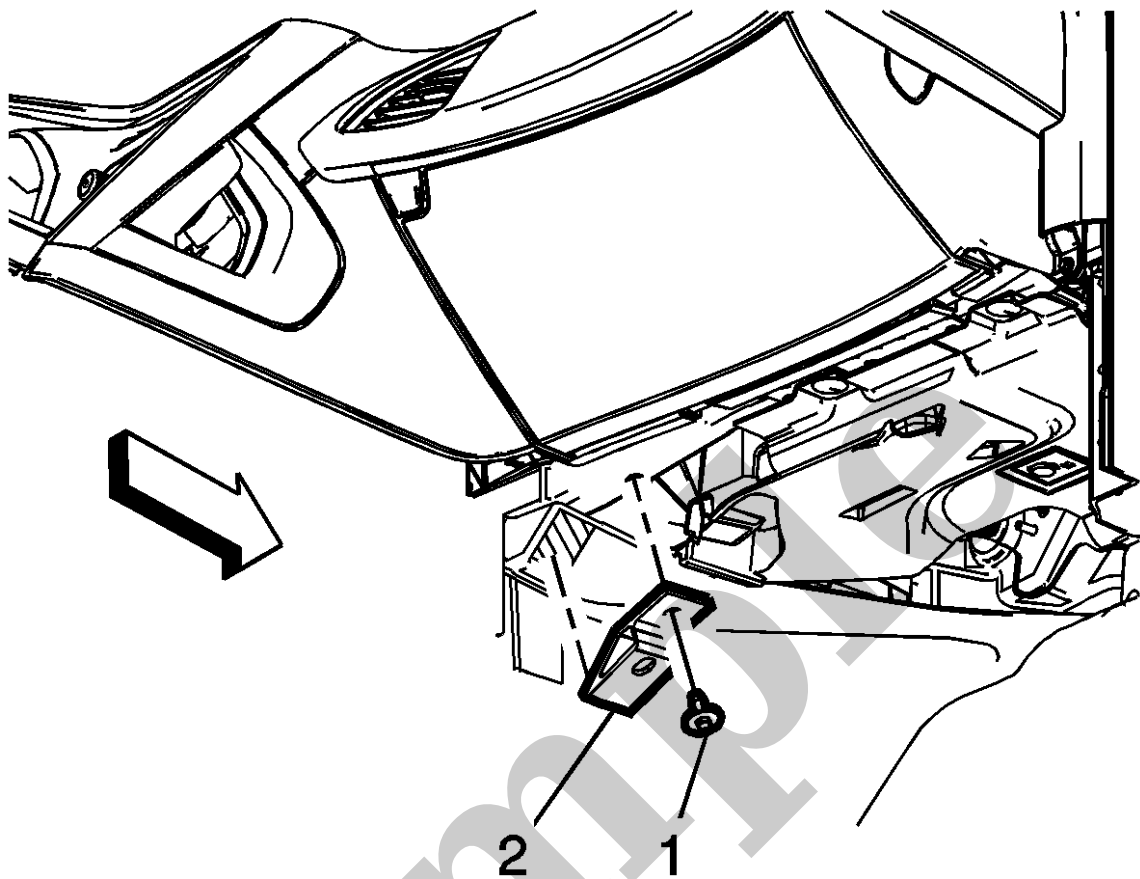


Your Ultimate Source for OEM Repair Manuals

FactoryManuals.net is a great resource for anyone who wants to save money on repairs by doing their own work. The manuals provide detailed instructions and diagrams that make it easy to understand how to fix a vehicle.

1995 CHEVROLET Corvette C4 Coupe OEM Service and Repair Workshop Manual

[Go to manual page](#)



5.

NOTE

Note

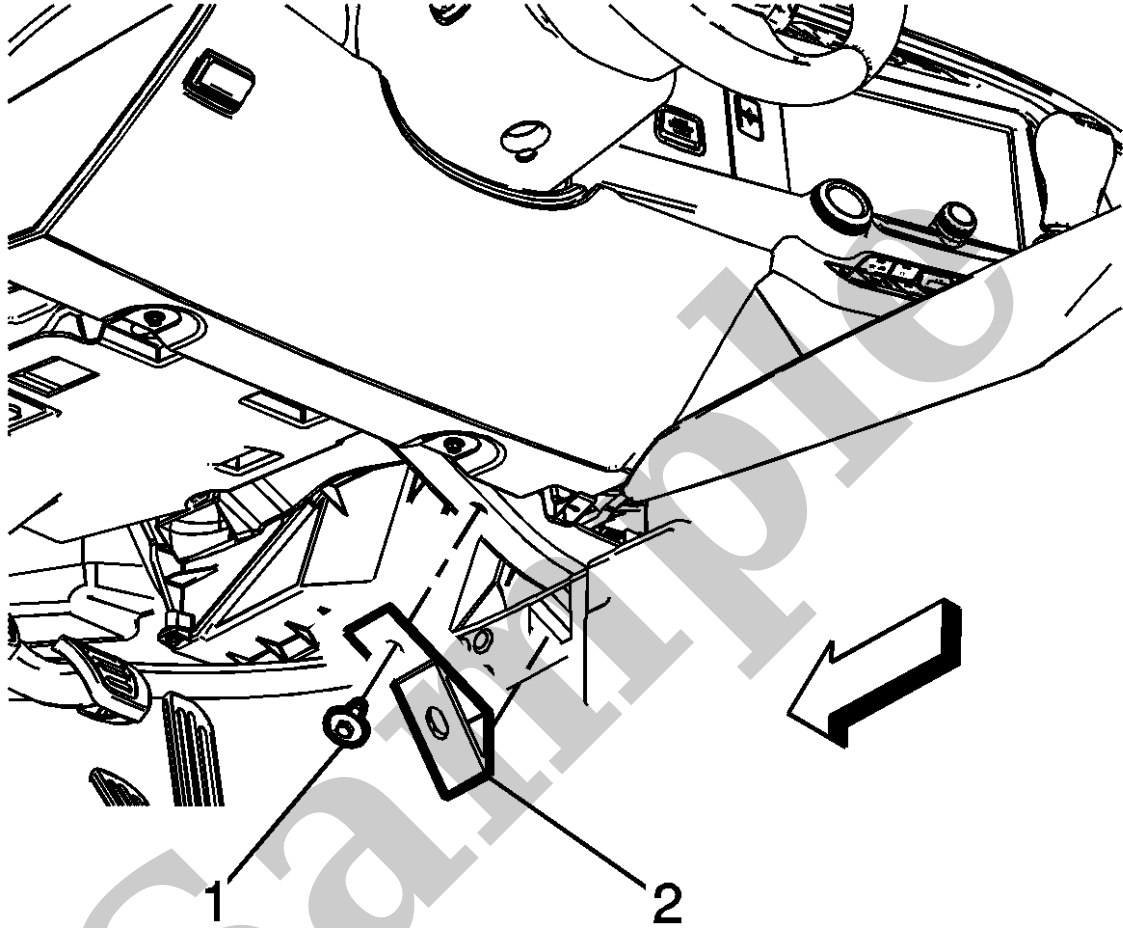
The following step ensures proper trim fit during installation.

Mark the location of the instrument panel tie bar brace.

6. Remove the instrument panel tie bar brace bolt (1) which secure the brace to the lower instrument panel tie bar.
7. Remove the right instrument panel tie bar brace (2) by applying heat and pry to detach the adhesive along the floor panel tunnel panel.
8. Remove all remaining loose adhesive.

Tighten

9 N·m (80 lb in).



4.

Apply adhesive to the left instrument panel tie bar brace (2) and tape the brace in place as necessary.

5. Install the instrument panel tie bar brace bolt (1).

Tighten

9 N·m (80 lb in).

6. Replace the carpet back under the instrument panel as needed. Refer to [Front Floor Panel Carpet Replacement - Left Side](#) and [Front Floor Panel Carpet Replacement - Right Side](#).

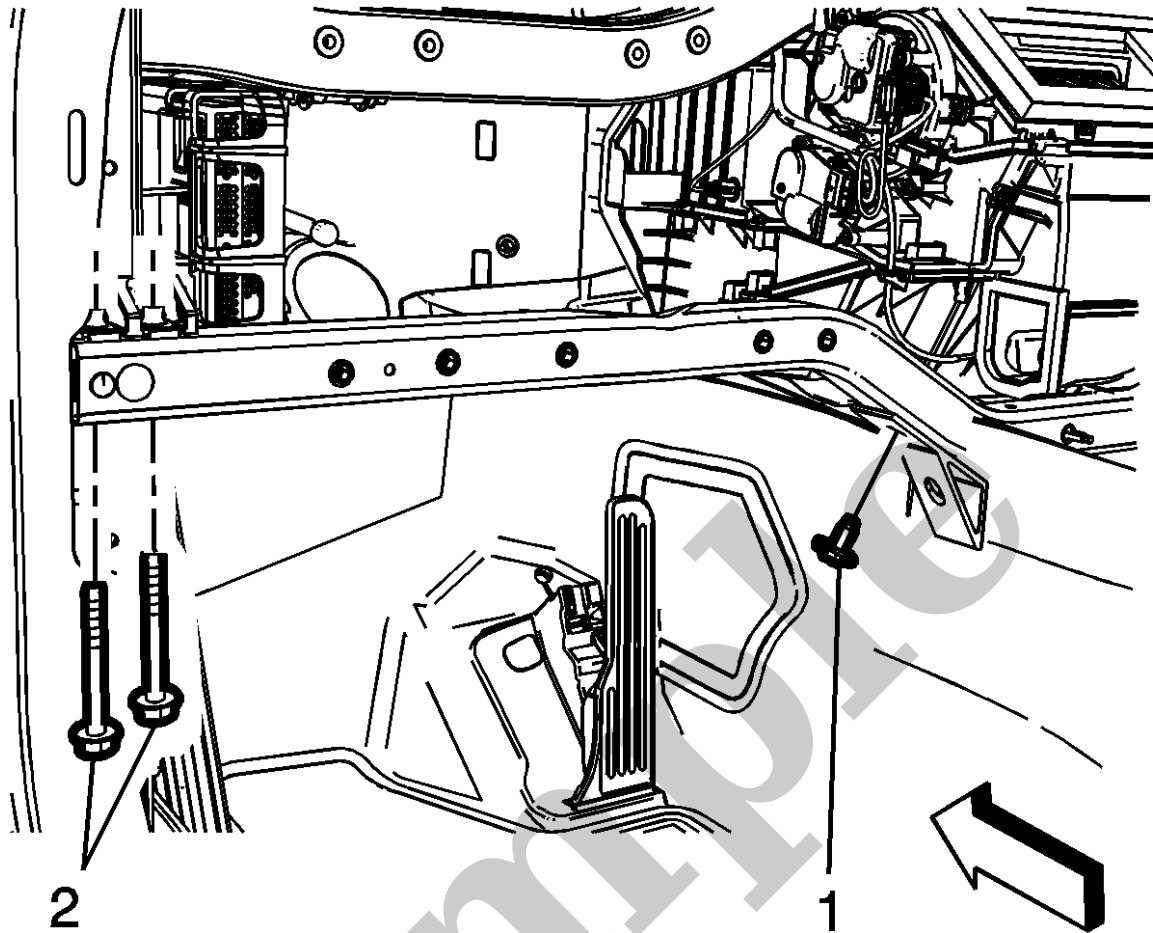
YOUR CURRENT VEHICLE

Instrument Panel Tie Bar Replacement

Instrument Panel Tie Bar Replacement

Removal Procedure

1. Remove the left front floor air outlet duct. Refer to [Floor Front Air Outlet Duct Replacement - Left Side](#).
2. Remove the instrument panel lower airbag bracket. Refer to [Instrument Panel Lower Airbag Bracket Replacement](#).



4.

Remove the instrument panel tie bar bolt (1) and instrument panel bolts (2).