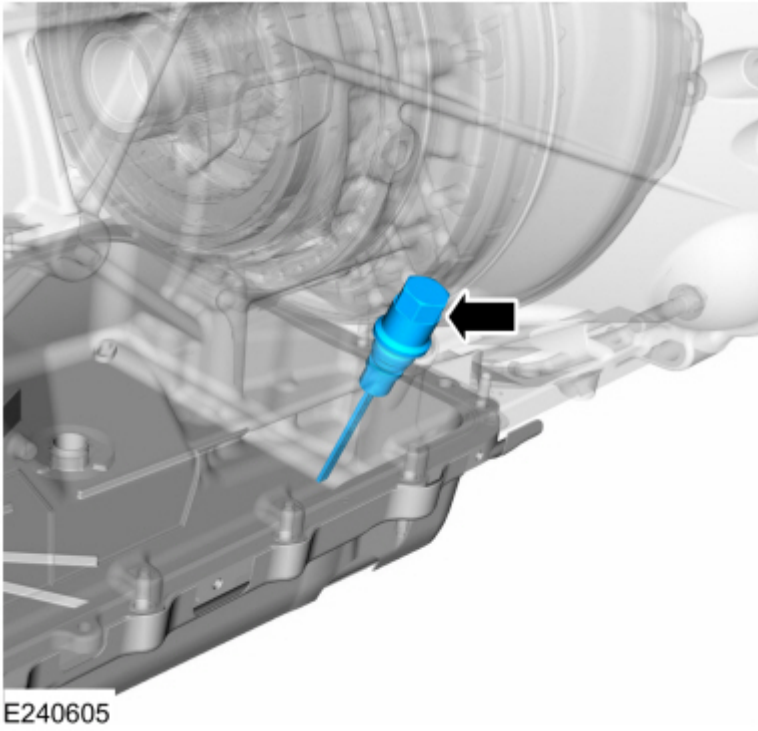


Your Ultimate Source for OEM Repair Manuals

FactoryManuals.net is a great resource for anyone who wants to save money on repairs by doing their own work. The manuals provide detailed instructions and diagrams that make it easy to understand how to fix a vehicle.

1993 FORD Escort Cabrio OEM Service and Repair Workshop Manual

[Go to manual page](#)



[Click here to learn about symbols, color coding, and icons used in this manual.](#)

9. **NOTE**

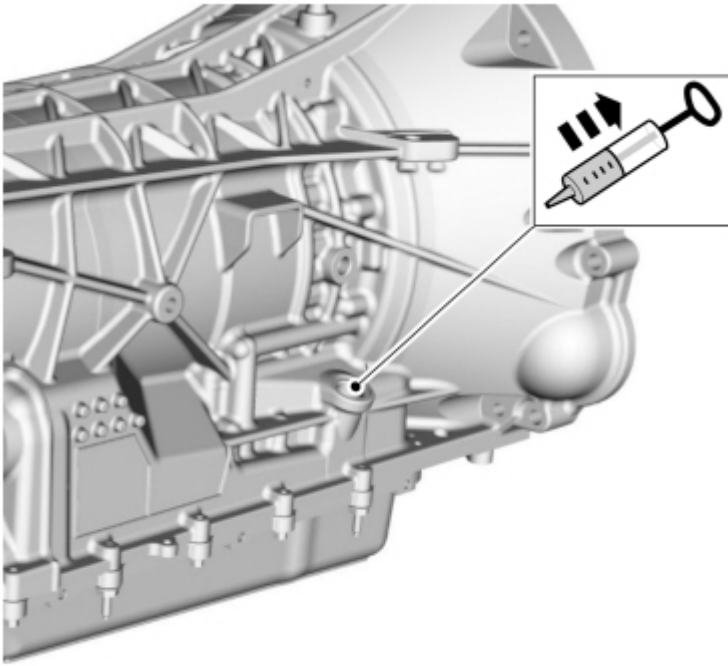
The transmission fluid level indicator uses 1 through 6 to indicate the fluid level. The different numbers are for different vehicle models. Use the area between 5 and 6 when checking the transmission fluid level. The correct transmission fluid level is between 5 and 6 on the transmission fluid level indicator.

NOTE

Do not overfill the transmission.

Using the scan tool verify the transmission fluid temperature is between 96°C - 101°C (206°F - 215°F). The transmission fluid level must be between 5 and 6 on the transmission fluid level indicator.

Use the General Equipment: Fluid Suction Gun

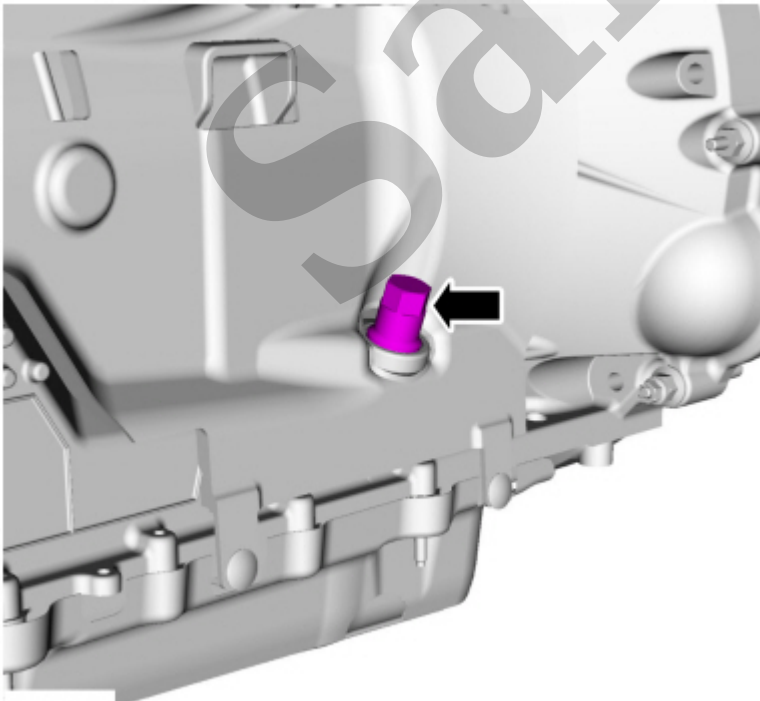


E256016

[Click here to learn about symbols, color coding, and icons used in this manual.](#)

12. Install the transmission fluid fill plug.

Torque : 35 lb.ft (47 Nm)



E240618

Transmission Fluid Level Check

307-01A Automatic Transmission - 10-Speed Automatic Transmission - 10R80	2022 F-150
General Procedures	Procedure revision date: 01/7/2021

Transmission Fluid Level Check

Inspection

NOTICE

The vehicle should not be driven if the transmission fluid level is low. Internal failure could result.

NOTE

If the vehicle has been operated for an extended period at high highway speeds, in city traffic, during hot weather or while pulling a trailer, the transmission fluid must cool down to obtain an accurate reading.

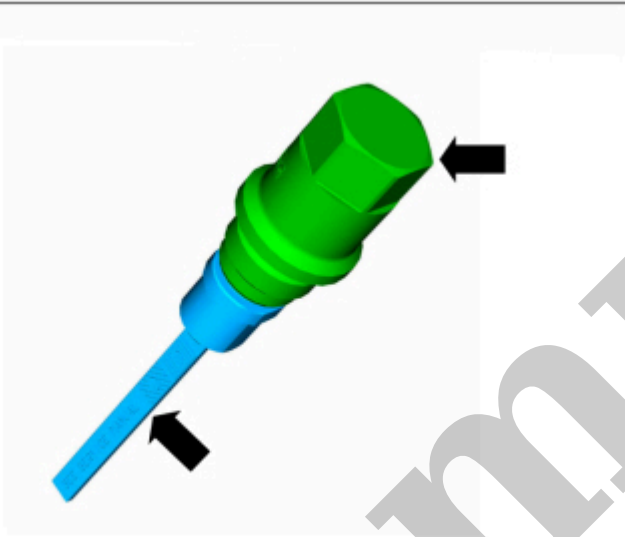
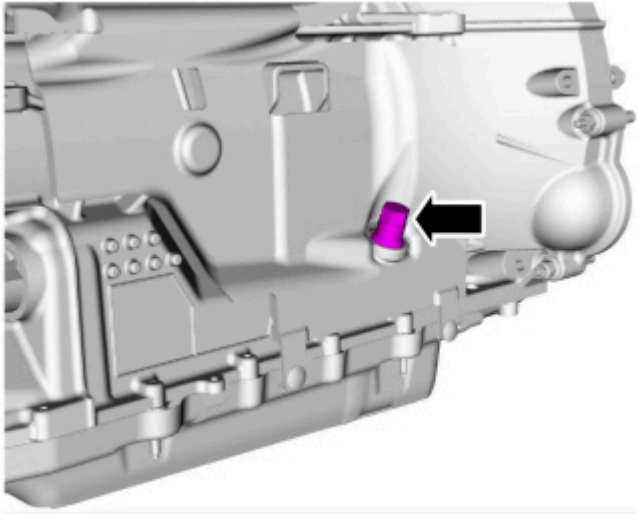
NOTE

If a new transmission fluid cooler or new fluid cooler tubes have been installed, drive the vehicle to warm the transmission fluid to 96°C-101°C (206°F-215°F) in order to purge the air from the transmission fluid cooling system.

1. Connect the diagnostic scan tool and position the vehicle on a hoist.

Refer to: [Jacking and Lifting - Overview](#)(100-02 Jacking and Lifting, Description and Operation).

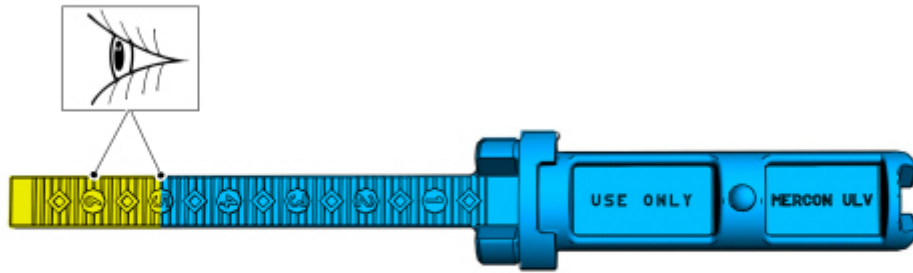
2. If equipped, remove the retainers and splash shield.



E240481

[Click here to learn about symbols, color coding, and icons used in this manual.](#)

5. Check the transmission fluid level using the transmission fluid level indicator.



E289009

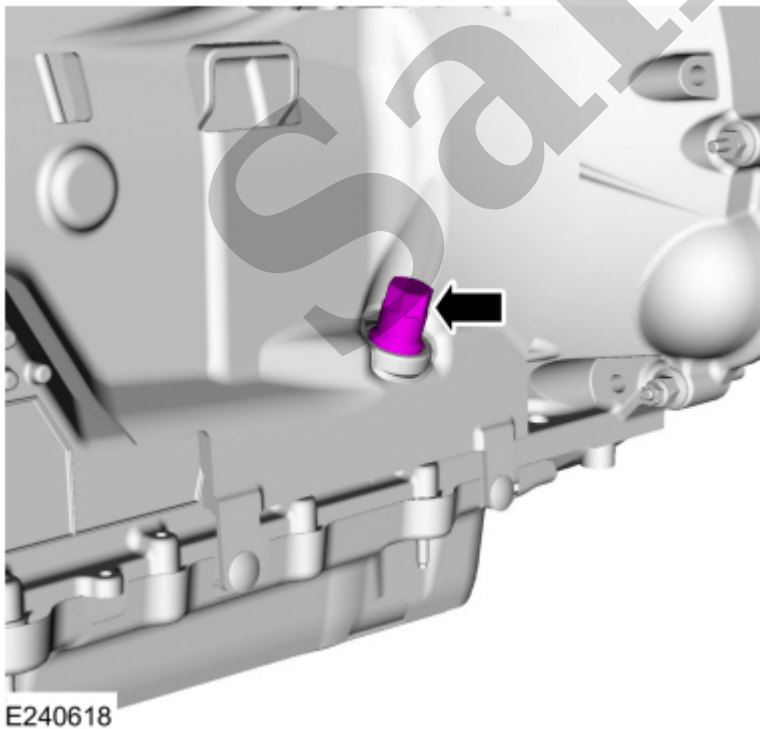
[Click here to learn about symbols, color coding, and icons used in this manual.](#)

7. If the transmission fluid is not at the correct level, follow the steps for adding or removing transmission fluid.

Refer to: [Transmission Fluid Drain and Refill](#)(307-01A Automatic Transmission - 10-Speed Automatic Transmission - 10R80, General Procedures).

8. Install the transmission fluid fill plug.

Torque : 35 lb.ft (47 Nm)



[Click here to learn about symbols, color coding, and icons used in this manual.](#)

Transmission Line Pressure Test

307-01A Automatic Transmission - 10-Speed Automatic Transmission - 10R80	2022 F-150
General Procedures	Procedure revision date: 08/5/2020

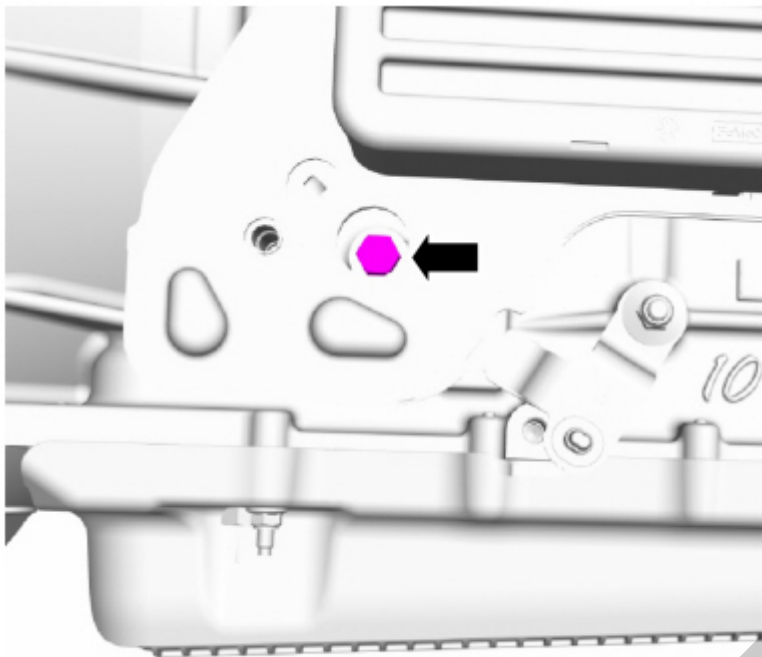
Transmission Line Pressure Test

Check

1. With the vehicle in NEUTRAL, position it on a hoist.
Refer to: [Jacking and Lifting - Overview](#)(100-02 Jacking and Lifting, Description and Operation).
2. If equipped, remove the retainers and splash shield.

[Click here to learn about symbols, color coding, and icons used in this manual.](#)

4. Remove the line pressure plug.



E336093

[Click here to learn about symbols, color coding, and icons used in this manual.](#)

5. 1. **NOTICE**

The line pressure tap is an M10 X 1.00 thread. Do not use a National Pipe Thread (NPT) fitting when installing a pressure gauge. If a NPT fitting is used, damage to the transmission case will occur.

Connect a Transmission Fluid Pressure Gauge with a M10 X 1.00 fitting.

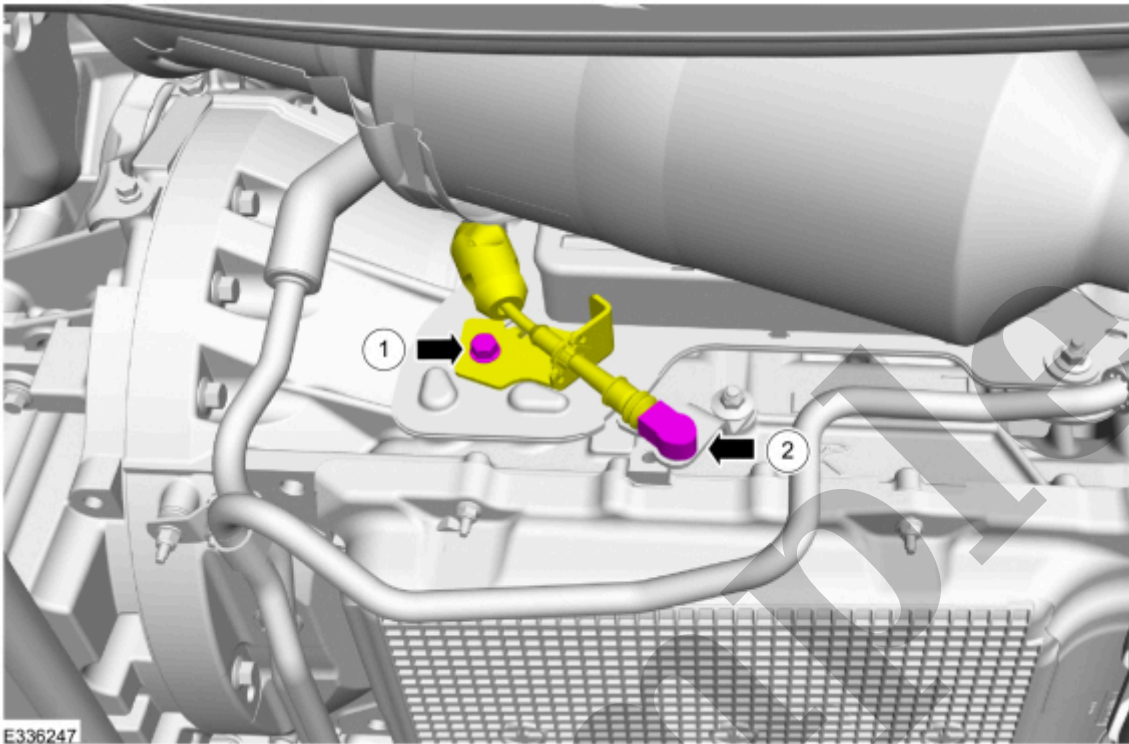
2. Start the engine and check the line pressures. Refer to the Line Pressure Chart to determine if the line pressure is within specification.

Refer to: [Special Testing Procedures](#)(307-01A Automatic Transmission - 10-Speed Automatic Transmission – 10R80, Diagnosis and Testing).

1. Install the new transmission park manual release cable bracket bolt.

Torque : 177 lb.in (20 Nm)

2. Connect the transmission park manual release cable to the transmission lever.



[Click here to learn about symbols, color coding, and icons used in this manual.](#)

8. If equipped, install the splash shield and the retainers.

Torque : 71 lb.in (8 Nm)

Transmission Strategy Download

307-01A Automatic Transmission - 10-Speed Automatic Transmission - 10R80	2022 F-150
General Procedures	Procedure revision date: 03/1/2022

Transmission Strategy Download

Programming

1. This procedure should be performed when a new transmission or main control valve body is installed in the vehicle.
 1. 13 - digit solenoid body strategy
 2. 12 - digit solenoid body identification
- If a new main control was installed, record the 13-digit solenoid body strategy from the replacement solenoid body tag provided with the main control service kit. Place the replacement tag over the existing identification tag.
- If a new transmission was installed, record the 13-digit solenoid body strategy from the solenoid body service information tag on the side of the transmission.